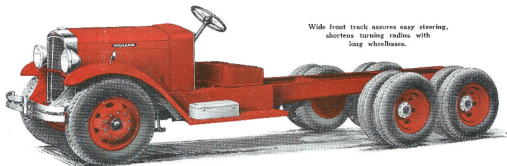


CHASSIS SPECIFICATIONS



Wide front track assures easy steering, shortens turning radius with long wheelbases.

Indiana Model 17SW-251

Maximum Gross Rating 28,000 Lbs.

ENGINE—Six cylinder, cast enbloc with removable head, L-head type. Crankshaft 3 in. diameter, mounted in seven main bearings, total projected bearing area 42 square inches. Bore $4\frac{3}{4}$ in. Stroke $4\frac{3}{4}$ in. Piston displacement 427.5 cu. in. 94 brake H. P. at 2200 R. P. M. S. A. E. Horse Power 45.94. Torque 283 ft. lbs. at 1000 R. P. M. 3 point suspension. Lubrication full force feed to main bearings, connecting rod bearings and timing gears. Splash lubrication to camshaft bearings. Oil capacity 10 quarts. Water circulation by centrifugal pump. Pistons, aluminum fitted with four rings. Helical timing gears $\frac{7}{8}$ in. face. Connecting rod bearings $2\frac{1}{2}$ in., diameter $1\frac{3}{4}$ in. length. Balanced down draft carburetion.

IGNITION—Battery with distributor and coil.

RADIATOR—Fin flat tube removable core mounted in chromium plated pressed steel shell.

CLUTCH—Heavy duty, single plate, 14 in. diameter.

TRANSMISSION—Mounted in unit with motor. Selective sliding gears, 4 speeds forward, 1 reverse. All gears heat-treated and case hardened for long wear. A five speed transmission with high speed overdrive, or an auxiliary transmission mounted amidship available at extra cost.

PROPELLER SHAFT—Tubular with 3 heavy duty oil tight dust-proof metal universal joints with self-aligning center bearings.

CONTROL—Left hand drive with gear shift and emergency brake levers in center. Spark and throttle controlled by hand levers on steering wheel. Foot accelerator.

STEERING GEAR—Heavy duty cam and lever, 20 in. hand wheel, drag link and tie rod, ball and socket self adjusting construction.

(Continued on following page)

WHEELS—Metal disc 20 in. base, ventilated type. Ten studs.

FUEL TANK—Mounted under driver's seat in special carrier. Lock seamed joints. Terne plate material, capacity 29 gallon. Additional side mounted gas tanks 35 gallon available at extra cost.

INSTRUMENT BOARD—Speedometer driven off transmission. Ammeter, heat indicator, lighting and ignition switch, oil gauge and dash light.

FRONT AXLE—Extra heavy, heat-treated steel forging I-Beam section $3\frac{3}{8} \times 2\frac{3}{8} \times 7/16$ in. Chrome nickel steel spindles. Wheel bearings taper roller. Steering thrust taken by roller bearings. A track of 68 in. or 7 in. more than ordinarily used reduces the turning radius and makes the unit especially easy to handle with balloon tires and long wheelbases.

REAR AXLE—Twin axle unit, power on both axles, heavy duty worm drive. Standard ratio 6.143—1. Weight equally divided on two rear axles.

FRAME—Heat-treated pressed steel channel $8\frac{1}{2} \times 3 \times 5/16$. Frame tapered to give maximum strength with minimum weight. Frame width 34 in. Seven cross members. Fish plates furnished at extra cost.

SPRINGS—Silico Manganese steel semi-elliptic. Front 40 in. long, $2\frac{1}{2}$ in. wide, 11 leaves. Rear 52 in. long, 4 in. wide, 11 leaves.

BRAKES—Hydraulic six wheel internal expanding with vacuum booster. Front drums gunitite $16 \times 2\frac{3}{4}$. Rear drums gunitite $17\frac{3}{4} \times 4$. Total brake lining area 625 square inches.

TIRES—Standard 34×7 single front, dual rear. Optional at extra cost 8.25-20.

WEIGHT—(Approx.) 188 in. wheelbase chassis 9,000 lbs. Cab 625 lbs. additional. Total gross allowable including weight of chassis, cab, body and load 28,000 lbs.

WHEELBASE—188 in. standard. Other wheelbases furnished at extra cost.

Wheel- bases	Back of Cab to center of Rear Axle	Distance back of seat to End of Frame	Recommended Body Length
188"	8'- 5"	14'- 0"	13'-6" to 14'-6"
200"	9'- 5"	16'- 0"	15'-0" to 16'-6"
212"	10'- 5"	17'- 6"	16'-6" to 18'-0"
224"	11'- 5"	19'- 6"	18'-0" to 20'-0"

STANDARD EQUIPMENT—Heat indicator, crown front fenders, two bar spring bumper, running boards with splash shields, jack, set of tools, electric lights and starting equipment, electric horn, oil gauge, ammeter, dash light, air cleaner, speedometer, rear vision mirror, oil filter, tire carrier and one extra wheel.

CAB—(Extra Equipment) DeLuxe Cab, equipped with sedan type doors and one-piece windshield. Automatic windshield wiper. Cushions of latest improved type, deep coil springs in back and seat cushions, nicely tailored. Three point mounting.

(Specifications subject to change without notice)

Indiana Trucks are Sold and Serviced by the
World Wide Branch and Dealer Organization of

THE WHITE COMPANY
Cleveland