



# STUDEBAKER

*Standard Series Trucks*

GROSS RATING 20,000 LBS.

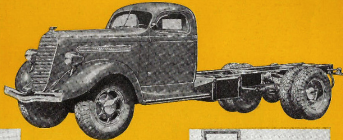
MODEL K-30

# The Heavy-Duty K-30 STUDEBAKER 20,000 lbs. Gross Rating



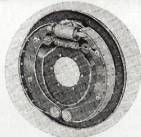
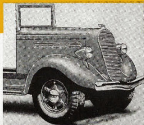
**T**HIS "flagship" of the Studebaker Standard fleet calls for but a glance at the specifications to convince any experienced truck man of its thorough-going excellence. For example: its frame side members are  $\frac{1}{4}$ " thick and  $8\frac{1}{2}$ " deep on the shortest wheelbase— $\frac{3}{16}$ " thick by  $8\frac{1}{2}$ " deep on the longer models. Thus its 20,000 pounds rating is more than adequately supported above the axles. Rear axle is oversize, full-floating, triple roller bearing, with straddle-mounted heavy pinion. And power! Its big, 383 cubic inch 7-bearing engine develops 106 horsepower at 2800 r.p.m.—268 pound-feet of torque at 900! Check it straight through, then buy it and put it up against your toughest service!

Above inside cab opposite seats about those of the finest passenger cars. The easy riding fully cushioned seat has plenty of room for those games people. Every thing extremely convenient. Solidly constructed of all steel reinforced by steel. Safety glass all around or slight extra cost.

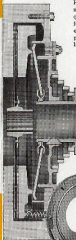


Any type of truck body you need will harmonize perfectly with this Studebaker chassis. The chassis is available with straight cowl, V-type cowl as shown or left, or with the de luxe cowl. Modern streamlined style with a distinctive cowl of dignity make this a unit of which you may well be proud.

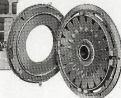
Straight cowl is standard equipment with chassis. This assembly plus windshield is shown at right. Windscreen is extra.



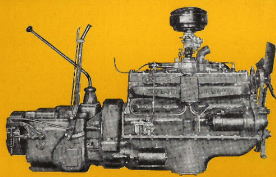
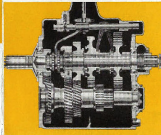
Above—Genzie Lockheed Hydraulic Brakes provide personally regulated pressure, quick and accurate take-up for heavy wear. No lubricant ever needed. Brakes operate perfectly with truck loaded or light.



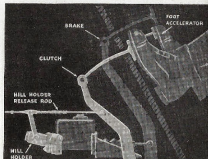
Below, simplest and sturdiest track clutch ever devised. Impossible to "jump" the clutch because of its inherent self-locking engagement characteristics. Full bearing lever action. Vibration dampening reduces gear load. Ventilation keeps temperatures safely low for long life.



Below—Constant mesh gears of quiet, long-lived helical type. Champagne gears deep cut, with wide, thick teeth. Five forward speeds.

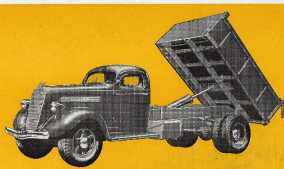


Above—Heavy-duty engine with maximum brake horsepower of 106 at 2800 r.p.m. Well known for its extra power and ability to take real punishment under full load at full throttle whenever necessary and as long as necessary.



Right—Driver's left foot on clutch pedal retains brake pressure; holds truck from rolling backward; leaves his right foot free to apply the throttle when he's ready to go. Nothing else like this Hill Holder! Saves damaging vehicles in bank. Available at extra cost. An exclusive Studebaker innovation in driving ease and safety.

Below—The ability of the Studebaker Model K-30 to obtain the punishment of the severest service makes it a favorite truck for heavy bulk material handling. Its 20,000 lbs. gross capacity provides abundant lift for full payload with heavy bodies, such as the 6-cubic yard hydraulic body illustrated.



# STUDEBAKER STANDARD SERIES MODEL K-30 CHASSIS SPECIFICATIONS

## GENERAL

Gross Rating 30,000 lbs.  
Note: Gross Rating is maximum allowable when equipped with auxiliary rear springs and adequate overvise types.

Gross train rating 32,000 lbs.  
Wheelbases 142" 186" 194"  
Recommended body lengths 9' 12' 13'  
Chassis road weight with standard equipment (lbs.) 8800 4950 6105  
Road clearance—standard tyres  
Front axle—10<sup>1</sup>/<sub>16</sub>" Rear axle—7<sup>1</sup>/<sub>16</sub>"

## ENGINE L-head design

Bore and stroke 4<sup>1</sup>/<sub>16</sub>" x 4<sup>1</sup>/<sub>16</sub>"  
No. of cylinders 6  
Piston displacement (cu. in.) 393  
Rated H.P. (A.M.A.) 43.3  
Maximum torque at r.p.m. 126 of 2300  
Minimum torque at r.p.m. (lbs. ft.) 230 at 900  
Standard compression ratio 5.5 to 1  
Crane-like of capacity 5% Imperial qts.

## PISTONS

Material Aluminum Alloy, truck type  
No. of compression rings per piston 3  
No. of oil rings per piston 1

## CRANKSHAFT

No. of bearings 7  
Bearing journal diameter 2<sup>1</sup>/<sub>16</sub>"  
Total bearing surface area (sq. in.) 103.29

## FUEL SYSTEM

Petrol tank capacity 25 Imperial gals.  
Location of petrol tank Left side of frame  
Carburettor size 1<sup>1</sup>/<sub>2</sub>"  
Air cleaner Wet type  
Governor Yes  
Governed engine speed 2400 r.p.m.

## COOLING SYSTEM

Radiator case Tabular  
Type of water pump Centrifugal  
Cooling system capacity 19 Imperial qts.

## ELECTRICAL SYSTEM

Spark control Full automatic  
Type of generator regulation Third brush  
Voltage regulator Yes  
Type of drive Bendix  
Battery 6 volts—19 plates—153 lux. cap.

## CLUTCH

Type Single plate, dry disc  
Clutch linings Woven asbestos  
Type of release bearing Bell

## GEARBOX

No. of forward speeds 5  
Gear reductions: 1st ..... 7.68 to 1  
2nd ..... 4.46 to 1  
3rd ..... 2.63 to 1  
4th ..... 1.48 to 1  
5th ..... 1 to 1  
Reverse ..... 7.68 to 1  
15 Imperial pts.  
Oil capacity 15 Imperial pts.

## OVERDRIVE GEARBOX

(of extra charge)  
No. of forward speeds 5  
Gear reductions: 1st ..... 7.68 to 1  
2nd ..... 3.97 to 1  
3rd ..... 1.93 to 1  
4th ..... 1 to 1  
5th ..... 7.68 to 1  
Reverse ..... 7.68 to 1  
15 Imperial pts.  
Oil capacity 15 Imperial pts.

## UNIVERSAL JOINT and PROPELLER SHAFT

Type of bearings Midship bearing  
Needle roller Axial—self-aligning

## REAR AXLE

Type Full floating  
Type of final drive Spiral bevel  
Standard gear ratio 6.533  
Optional gear ratio 6.142 & 7.8  
Bridle mounted piston Yes  
Ring gear back-up screw Yes  
Oil capacity 10 Imperial pts.  
Track (standard dual tyres) 79<sup>1</sup>/<sub>16</sub>"

## FRONT AXLE

Type Reverse Elliott  
Track (standard tyres) 68"

## TYRES

Standard—Front 7.00-20  
Dual rear 32" x 6"—10-ply

## WHEELS

Type Cast spoke  
Optional wheel equipment Disc wheel

## STEERING

Type Cam and lever  
Ratio 18—22 to 1  
Steering wheel diameter 20"

## FRONT SPRINGS

Type Semi-elliptic  
Material Silico manganese  
Length, width & No. leaves 39" x 2<sup>1</sup>/<sub>16</sub>"—11

## REAR SPRINGS

Type Semi-elliptic  
Material Silico manganese  
Length, width & No. leaves 54" x 2<sup>1</sup>/<sub>16</sub>"—13  
Auxiliary springs 36" x 2<sup>1</sup>/<sub>16</sub>"—3 leaves

## SERVICE BRAKES

Make Lockheed hydraulic  
Size—Front 16" x 2<sup>1</sup>/<sub>16</sub>"  
Rear 17<sup>1</sup>/<sub>16</sub>" x 4"  
Lining thickness—Front 5/16"  
Rear 7/16"  
Total effective area 431<sup>1</sup>/<sub>2</sub> sq. in.  
Brake equipment Standard

## HAND BRAKE

Location and type Gearbox, hand  
Size 8<sup>1</sup>/<sub>16</sub>" x 3"  
Total effective area 86.7 sq. in.

## FRAME

Depth of side member 142" 165" 104"  
Width of side member W.B. W.B. W.B.  
8<sup>1</sup>/<sub>16</sub>" 8<sup>1</sup>/<sub>16</sub>" 8<sup>1</sup>/<sub>16</sub>"  
Thickness of side member 3" 3" 3"  
Section modulus 1<sup>1</sup>/<sub>2</sub>" 9<sup>1</sup>/<sub>16</sub>" 7<sup>1</sup>/<sub>16</sub>"  
No. of cross members 6 5 7

## COLOURS

Cab, oval, hood, radiator shell, headlights, front mudguards, and wheels finished in Cardinal Red unless otherwise specified on order. Radiator grille in Chrome, Bonnet Grey, Chrome Yellow and Four Green, are optional on an extra charge. Chassis frame and running gear always finished in black.

## STANDARD CHASSIS EQUIPMENT

Includes straight coat, dash, hood, the hood, front mudguards, short runway boards, chrome front bumper, wet type air cleaner, oil filter, radiator grille in chrome, headlights, non-binding mop and seat lamp, tyre carrier, spare rim, spare trackless, park, back, back spare rim, shock springs, semi-controlled diameter switch and chrome-plated hub caps. Instrument board contains speedometer, odometer, carburettor strainer, oil pressure gauge, engine heat indicator, petrol gauge and hand-charge switch.

## CAB EQUIPMENT

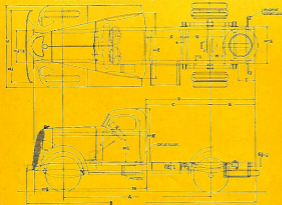
Maximum comfort, increased visibility, and streamlined appearance are features provided in the Studеbaker all steel coupe cab. Equipment includes sun visor, two windshield wipers, upholstery of doors and head lining, wire and chrome strips across the instrument board. Cab has adjustable seat back, bottle holder, air windshield defroster, rotary door locks and controlled ventilation.

The Studеbaker Export Corporation  
South Bend, Indiana, U.S.A.

## CHASSIS MAIN DIMENSIONS

Model	A	B	C	D	E	F	G	H	I	Recommended Body Length
K30-62	142"	216 <sup>1</sup> / <sub>16</sub> "	60"	102"	42"	24 <sup>1</sup> / <sub>16</sub> "	35 <sup>1</sup> / <sub>16</sub> "	13 <sup>1</sup> / <sub>16</sub> "	12"	9'
K30-66	166"	236 <sup>1</sup> / <sub>16</sub> "	84"	140"	56"	48 <sup>1</sup> / <sub>16</sub> "	51 <sup>1</sup> / <sub>16</sub> "	23 <sup>1</sup> / <sub>16</sub> "	27"	12'
K30-84	194"	274 <sup>1</sup> / <sub>16</sub> "	102"	158"	56"	48 <sup>1</sup> / <sub>16</sub> "	51 <sup>1</sup> / <sub>16</sub> "	23 <sup>1</sup> / <sub>16</sub> "	27"	15'

Detailed chassis drawings available for body building.



Studebaker reserves the right to change any of the specifications listed in this Advertiser without obligation to purchasers, users, or to call new designs or improvements without giving similar attention to their manufacturers.