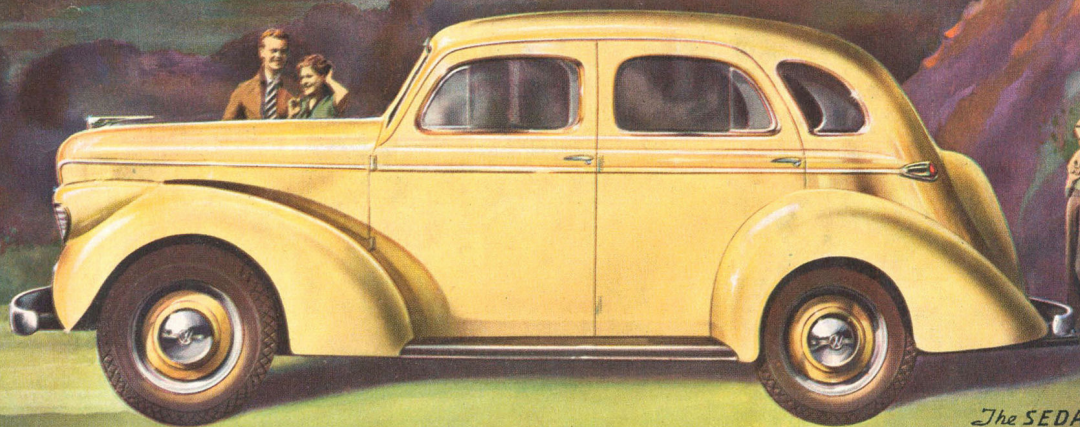
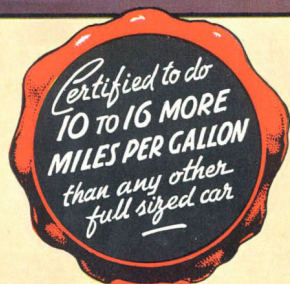


# WILLYS *Overland*



*The SEDAN*



*Super Power with  
Super Economy !*

**FOR THE FIRST TIME IN ANY CAR . . .**



**Willys OVERLAND • 15.6 h.p. developing 61 h.p. • not too big, yet comfortably seats 6 • not too small, yet does 35 m.p.g.**

## The laurels go to Willys OVERLAND

IN the Royal Automobile Club of Australia's all makes economy test, Willys OVERLAND was certified to do 10 to 16 more miles a gallon than any other full-size competitor.

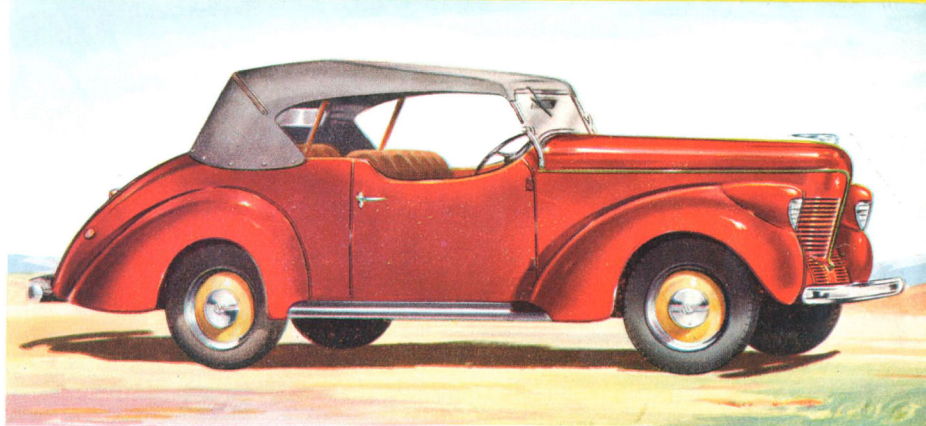
TWO years in succession Willys OVERLAND won both the actual and ton miles in the C.O.R. economy trial (all-powers class).

WILLYS OVERLAND has won the lion's share of trophies in open Australian all-powers contests covering speed, acceleration, hill-climbing, braking, reliability and economy.

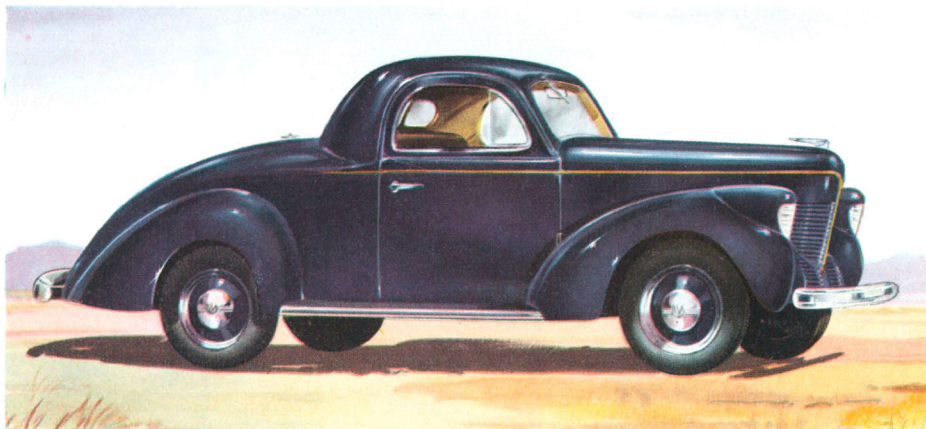
A STOCK standard Willys OVERLAND sedan under official American Automobile Association control averaged 75.07 miles an hour for 24 hours at Muroc Dry Lake, California. Immediately afterwards, an identical model ran 1080.4 miles at an average of 43.2 miles per gallon and an average speed of 45 m.p.h.

OFFICIALLY observed by the Canadian Auto Association, a stock standard Willys OVERLAND sedan averaged 46.39 miles a gallon over 597 miles of streets and roads.

THE Gilmore-Yosemite 524 miles mountain test further proved Willys OVERLAND'S amazing economy—39.8 miles a gallon with a majority of mountain upgrades in the 524 miles.



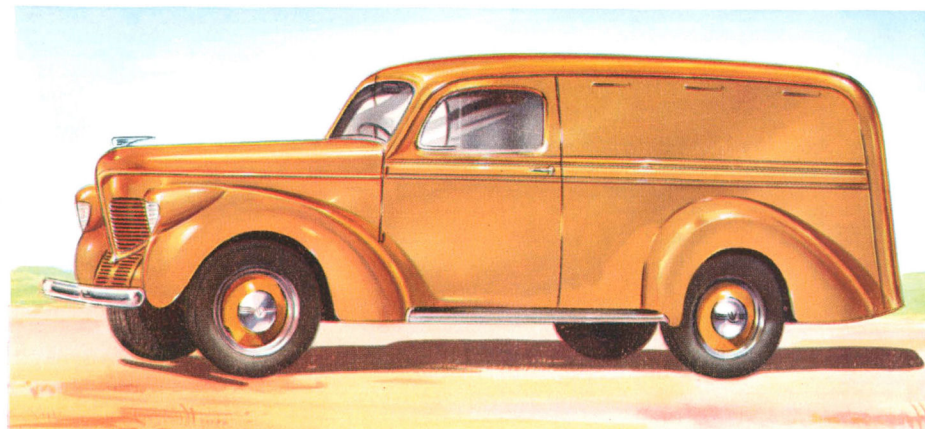
THE DUAL PURPOSE ROADSTER with removable rear seat is popular because of its generous carrying capacity and economy.



THE NEW COUPE with dickey-seat or commercial rear deck possesses smart appearance with 43 cu. ft. luggage space.



THE COUPE UTILITY has 26 sq. ft. floor space with 25-30 m.p.g. economy.



THE STEEL PANEL VAN with over 100 cu. ft. of pay load space features a de luxe sedan cabin.

## Willys OVERLAND Owners Say —

(Letters open for inspection.)

Sydney, 28/10/38.

... My previous Willys did over 66,000 miles at an average of about 28 m.p.g. and cost practically nil for other upkeep.

I thought I would try another make this time, but a review of the old Willys' service and the disappointing examination of cars in the Willys Overland field decided me to stick to Willys. My new one confirms the wisdom of my decision.

(Sgd.) A. V. Shemwell.

Cessnock, 30/9/38.

Hereunder please find a statement of actual running costs per mile of my Willys sedan.

Analysis of Running Costs for 3 years—30,000 miles.

	Cost in pence per mile.
Petrol	871
Oil and grease	100
Tyres and tubes	637
Cleaners, etc.	606
Repairs	131
Insur. and N.R.M.A.	209
Reg. and License	182
<b>TOTAL COSTS per mile</b>	<b>1,536d.</b>
	(Sgd.) E.D.—.

Sandringham, Vic.

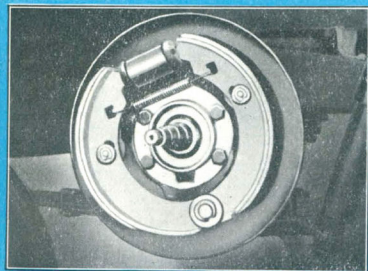
My wife, daughter and self, all sitting in the front seat, and with our necessary luggage made a trip to Woomeang, visiting the Grampians en route. With detours and side trips (often carrying five adults) we covered 758 miles on 21 gallons of petrol—an average of 36 m.p.g. over a road which is far from easy.

(Sgd.) J.C.D.—.

## Super-economy, plus super-power for the first time in any car!

NEW "slip-stream" beauty—rich luxury—new super-power—with the same gratifying long life and unmatched economy of previous Willys models. That is the new, bigger Willys OVERLAND. Just a few pence worth of petrol now carries the whole family to town, shopping or recreation in luxurious comfort.

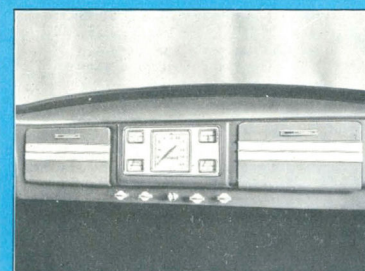
Try its road eager acceleration (10 to 50 m.p.h. in 15 seconds)—see how it zooms up steep grades in high gear—notice how, always, Willys OVERLAND is under the safe control of its new oversize hydraulic brakes. The new 4-cylinder motor has the smoothness of multi-cylinders without their complications and high upkeep, and its longer wheelbase gives you unhampered room for six grown-ups. The luxurious equipment and appointments of its "slip-stream" all-steel safety bodywork lift Willys OVERLAND, by comparison, into the £500 class—YET WILLYS OVERLAND'S PRICE REMAINS IN THE LOW PRICE FIELD.



New oversize hydraulic brakes of 124 sq. in. area feature wear-resisting moulded linings and nickel chromium alloy drums.



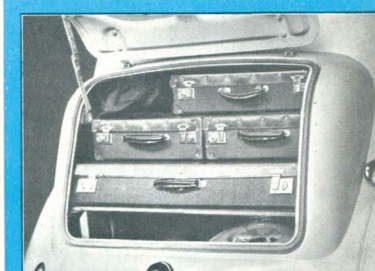
Note the leather-upholstered theatre comfort for three adults in each seat—the interior width is 51 inches.



The artistic dashboard with twin lockers groups the instruments in the most convenient manner. The improved starter button now pulls out.

## Willys OVERLAND gives you all this!

TO fully appreciate the wealth of up-to-date features outlined here, you must personally inspect the new model: 27% increase in reserve power with greater operating economy than ever; plenty of seating space for six with its 51 in. wide interior and longer wheelbase. Form fitting "Adjustoform" leather upholstered seats. Ample leg room even for 6-footers. Large and effective roof light. Spacious back seat shelf. Two large parcel lockers in the dashboard. Nearly 18 cu. ft. rear trunk. Heavy safety glass windscreen and windows. Safe wide vision with narrow posts. Low running boards. Twin glare vizors (the passenger's contains a vanity mirror). Twin electric windscreen wipers. Glare-proof rear vision mirror. Wide doors. Big diameter thin grip steering wheel. Pistol grip hand brake. Individually controlled fore and aft no-draught ventilation—and so on to give you every practical modern refinement.



Nearly 18 cu. ft. of dust and rain proof luggage space takes care of everyone's things, even on long Interstate trips.



# Willys OVERLAND Specifications

Here are the features resulting from Willys Overland's 36 years of quality manufacture.

**BODYWORK**—all steel safety bodies of the highest grade Australian craftsmanship, sound, heat and dust proofed, latest "slip-stream" contouring, safety glass windshields and windows, twin electric rain wipers, twin glare visors (the passenger's contains a vanity mirror), "Adjusto-form" seats, leather upholstered, flat floors, individually controlled fore and aft no-draught ventilation, dashboard lockers for "wanted on the voyage" articles, giant luggage trunks (nearly 18 cu. ft. in sedans, 43 cu. ft. in coupes and roadsters).

**BRAKES**—new 4-wheel Wagner-Lockheed hydraulic compensating internal expanding safety type. Features moulded and woven linings for ultra long life and silence. 9 in. drums with nickel chromium alloy surfaces provide maximum gripping power and resistance to wear. Total foot braking surface 134 sq. ins. Hand brake operates on rear wheels by pistol grip handle under the dash.

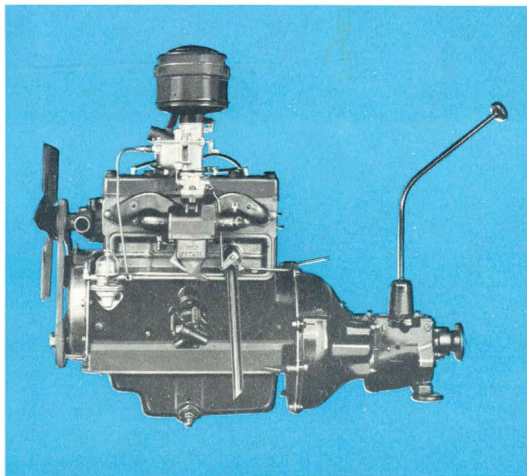
**CARBURETTOR**—new type Tillotson down-draught fed by positive action camshaft pump. Automatic variable venturi, exclusive to Willys OVERLAND. Automatic intake manifold heat control. Special A. C. oil bath air cleaner.

**CLUTCH**—8 in. diameter Borg and Beck single plate moulded lining dry disc with vibration neutralizing springs.

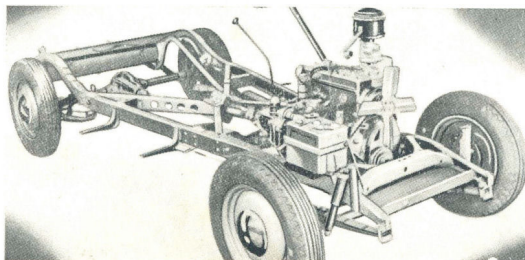
**COOLING**—by centrifugal balanced fan and water pump, v-belt drive, packless gland needs no lubrication nor attention. Automatic thermostat heat control, cellular radiator core, water capacity 9.4 quarts. Full length water jackets around cylinders.

**ENGINE MOUNTINGS**—"Anti-Vibro" live rubber and steel floats the engine at four points assuring smooth transmission of power.

**GEAR-BOX**—Warner silent non-clash synchromesh, 3 speeds forward, 1 reverse. Gears helical tooth type, molybdenum steel.



**ENGINE**—new design 4-cyl. motor of 15.6 nominal h.p. developing 61 h.p. at 3,600 r.p.m. Maximum torque (lbs. ft.) 106 at 2,200 r.p.m. Bore  $3\frac{1}{8}$  in., stroke  $4\frac{1}{8}$  in., displacement 134.2 cu. in. Compression ratio 6.35 to 1. Mounted on "Anti-Vibro" live rubber and steel insulators to eliminate last trace of vibration. Pistons new T-slot, cam ground, metal plated alloy type weigh 12 oz. Piston rings, 2 special compression and 1 latest type oil regulator. Connecting rods drop forged steel 9 and 3/16 in. long, diamond bored wrist pin bearings. Three-bearing crankshaft balanced rotating and at rest 2.3 in. dia. Nickel chromium inlet valves 1-17/32 in. dia. Silchrome exhaust valves 1-15/32 in. dia. Lubrication is force fed by double size gear driven pump to main, connecting rod and camshaft bearings with positive timing gear lubrication. Oil filtered through Float-O Unit.



**CHASSIS**—double drop duplex K and X frame  $3\frac{1}{8}$  in. deep. Wheelbase increased to 102 in. Standard 56 in. tread.

**IGNITION**—automatic vacuum and governor controlled giving perfect spark timing under all conditions.

**LAMPS**—head lights built into front mudguards for wider throw and safer night driving, foot operated dipping device. Belt line dual tail lights, spread light interior foot lamp. Indirect instrument panel illumination.

**OIL FILTER**—the permanent Float-O system which prevents sludge, water or abrasive matter from getting into the oil circulation. The intake is through a universal floater which always remains in the cleanest area no matter what angle the car assumes.

**REAR AXLE**—semi-floating with proved spiral bevel differential, 4.55 to 1, mounted in Timken taper roller bearings. Axle shafts are of molybdenum steel.

**SHOCK ABSORBERS**—heavy duty hydraulic, specially manufactured for Willys springing and road conditions.

**SPRINGS**—time-proven semi-elliptics, long and flexible, needing a minimum of service or attention. Rubber bushed shackles need no lubrication and are permanently silent.

**STEERING**—world renowned Gemmer worm and sector shockless and finger light. Turning radius only 17 ft.

**TRANSMISSION**—tubular propeller shaft with steel roller bearing universal joints.

**TYRES**—16 x 5.50 oversize balloons—choice of first-grade makes.

**WHEELS**—16 in. slotted discs with large chrome plated hubs.

**DUST SHIELD**—Full length of power plant effectively prevents road matter from collecting around the motor.

**ELECTRICAL**—Auto-Lite heavy-duty extra-load ventilated generator and latest high power Auto-Lite starter motor. Distributor is advanced and retarded by centrifugal governors at high speeds and vacuum diaphragm at low speeds.

NOTE.—We reserve the right to change prices, colours and other specifications at any time without notice.

## OVERLAND SYDNEY LIMITED

252-256 Castlereagh Street, SYDNEY.

Phone: MA 6955 (6 lines)