

WILLYS

The Seven Essentials

Willys has them all.

Economy

Dependability

Safety

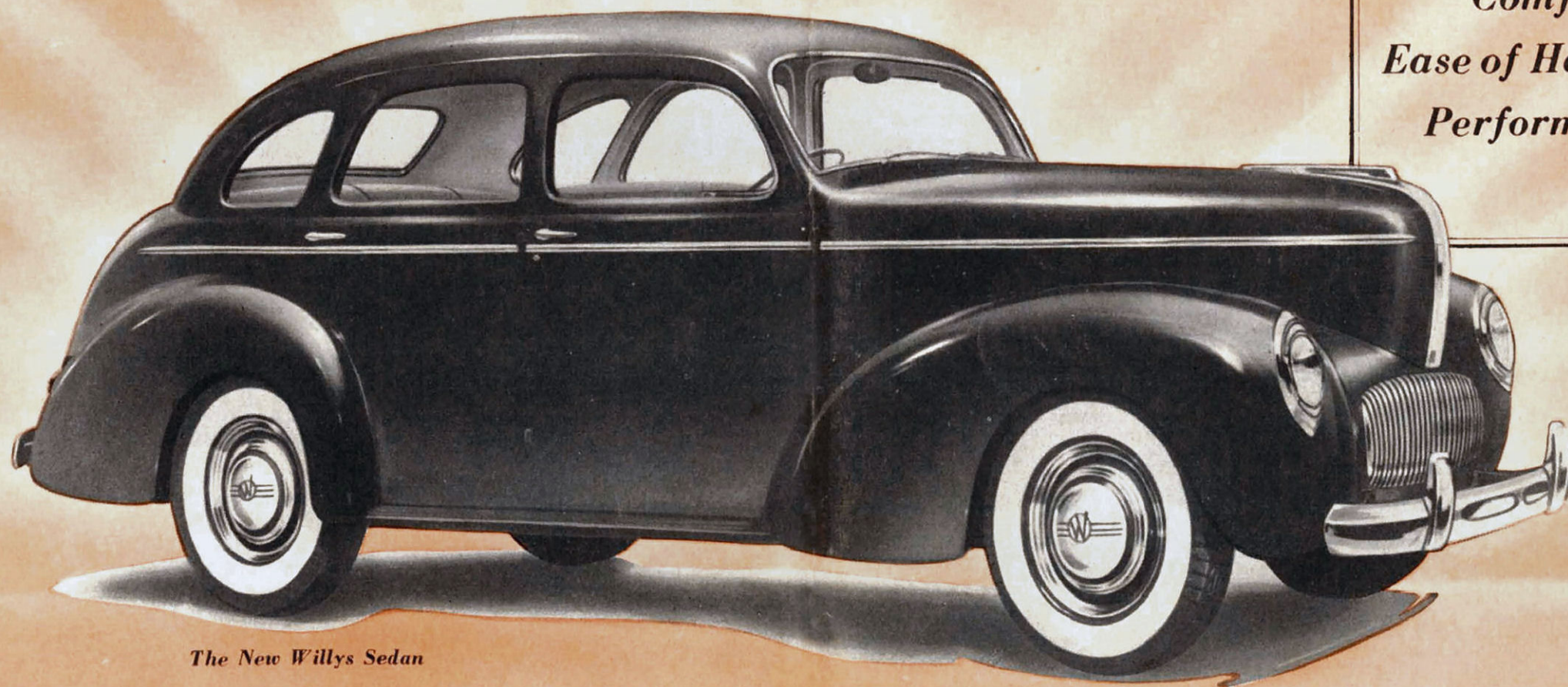
Beauty

Comfort

Ease of Handling

Performance

has a most acceptable message for all who realize that Thrift is a new and vital National Necessity.



The New Willys Sedan

More economical motoring, lower cost-per-mile, than any other full-size car! That sums up in a single sentence what Willys offers the motorist who to-day is forced to consider economy as well as power, performance and

the prestige of fine appearance. Willys is as good as it is good-looking. 15.6 Horse power. Full size. Standard Track. Over 30 m.p.g. "THE IDEAL CAR FOR THE TIMES".

Faithful construction—sterling quality

SPECIFICATIONS

AXLES—Rear: semi-floating. Six adjustable roller bearings. Hypoid type drive gears of nickel molybdenum steel. Chrome molybdenum axle shafts. Gear ratio: 4.44. Lubricant 1.666 Imperial pints. Front axle I-beam Reserve Elliott type, ball thrust bearings.

BODIES—All steel, welded into one piece. Rear quarter windows. Window ventilating wings with cam type lock. Cowl ventilator. Adjustable front seat. Exclusive Safety glass throughout.

BRAKES — (Service) Hydraulic, internal expanding, 9" nickel chromium alloy drums. Braking area 130 sq. in.

BRAKES—(Hand) Located on left, operated direct to rear wheel brakes.

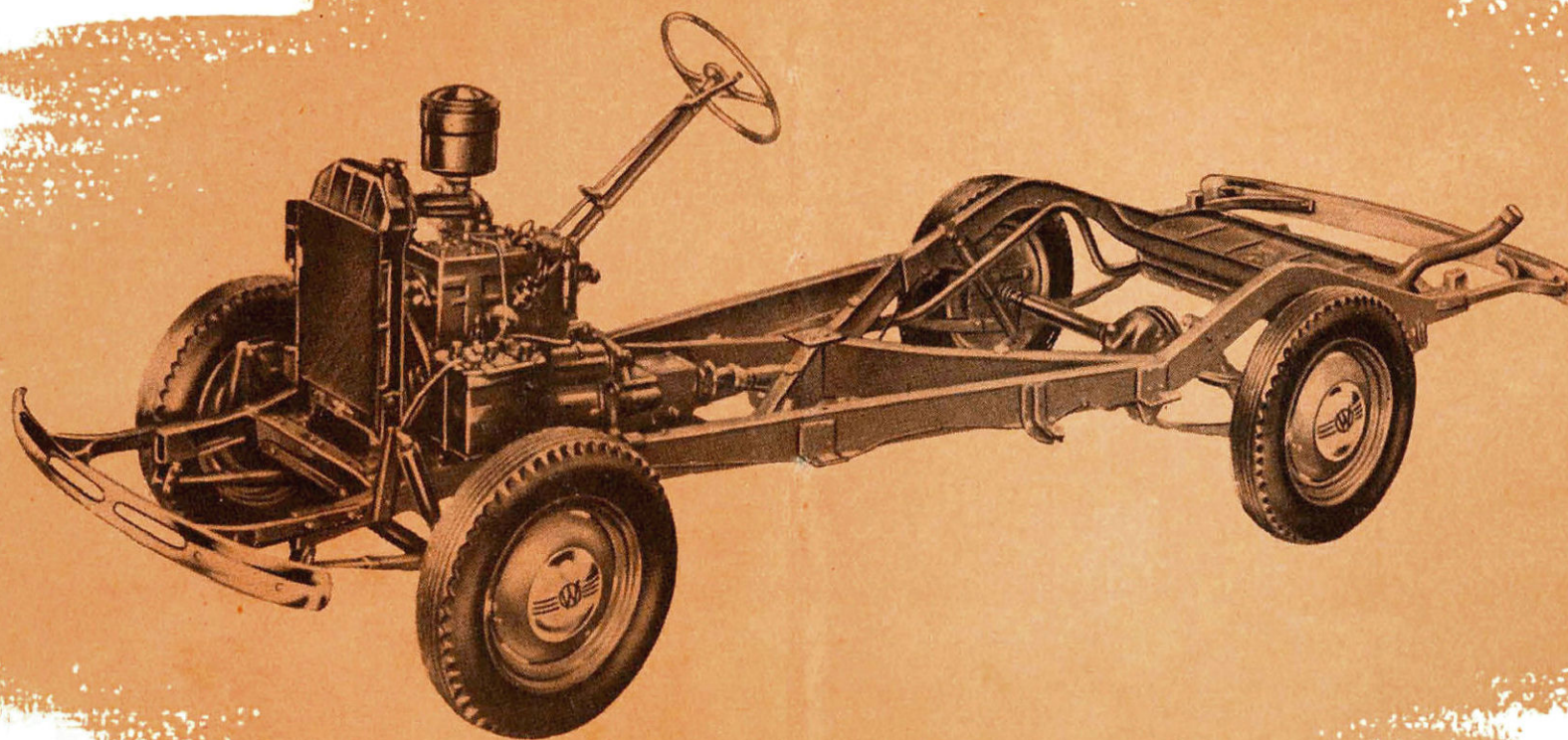
CLUTCH—Single plate, dry type, 8" diameter. Torque dampener in clutch disc. Pre-lubricated clutch release bearing.

COOLING SYSTEM—Positive circulating water type. Efficient radiator. Directional cooling — full length water jacket. Double row ball bearing packless centrifugal water pump. Adjustable V-type fan belt. Thermostatic water control. Capacity 9.79 Imperial quarts.

CRANKSHAFT — Drop forged, counter-weighted, balanced statically and dynamically. Three replaceable, steel-backed babbitt lined main bearings. Total bearing area 40 sq. in.

ENGINE—Mounted on four rubber supports. Four cylinders. "L" head type. Bore $3\frac{1}{8}$ ". Stroke $4\frac{3}{8}$ ". Horsepower 63 at 3800 R.P.M. Rated horsepower 15.63. Piston displacement 134.2 cu. in. Compression ratio 6.48. Cylinder block hard grey iron, mirror finished cylinder

FOR LOW-COST UPKEEP



walls; four bearing camshaft driven by silent timing chain. Aluminium alloy pistons with long connecting rods. Valve tappets equipped with clearance springs. Lubrication system full pressure type—direct oil pressure to main and connecting rod bearings, camshaft and timing chain. All other parts positively lubricated from oil spray holes in connecting rods. Floating type oil intake uses

only clean oil. Planetary gear type oil pump externally mounted on left side and driven from spiral gear on camshaft. Oil capacity—3.33 Imperial quarts.

ELECTRICAL SYSTEM — High output, radio type generator, air cooled. Voltage regulator type cut-out. Starter, 3 bearing type, Bendix Drive. Battery 13 plate, 6 volt 80 ampere hour capacity. Automatic (vacuum and

mechanical) ignition controlled spark advance. Firing order 1-3-4-2.

FRAME—Strong and rigid, double drop "KX" type.

FUEL SYSTEM—Petrol tank 9.79 Imperial gallons capacity. Air cleaner, (oil bath type available); automatic manifold heat control. Fuel pump with screen and sediment trap, operated from camshaft.

PISTONS—Aluminium alloy, T-slot, cam ground, tin plated. Graded for weight and size, selectively fitted in cylinders. Two taper-faced compression rings, one oil control ring. Piston pins $\frac{1}{8}$ " diameter. Connecting rods I-beam type, spun bab-bitt bearing.

SHOCK ABSORBERS — Adjustable, hydraulic, two-way type, rubber mounted.

SPRINGS — Semi-elliptic, parabolic leaf type, metal covers. Length: front 36 $\frac{1}{2}$ "; rear 46". Spring bolts and shackles mounted on rubber.

STEERING GEAR—Cam and lever type, 14 ratio; 17" steering wheel, two spoke. Turning radius 18 feet.

TYRES—5.50x16 black 4 ply non-skid type. Disc type 5 stud wheels.

TRANSMISSION — Synchromesh, 3 speed type, silent helical gears. Gearshift remote control mounted on steering column. Two ball and trunnion type universal joints with needle roller bearings.

WHEELBASE—104 inches; standard tread (56" front; 58" rear); overall length with bumpers 181".

STANDARD EQUIPMENT—Variety of colors and upholstery available. Bumpers front and rear; bumper guards; high frequency horn; dual windshield wipers; rear view mirror; two adjustable sun visors; dome light; ash receiver in instrument panel; cigar lighter; two combination stop and tail lights; license light; heavy duty generator; beam control headlamps; parking lights in headlamps; tools and jack; spare wheel, tyre and tube; safety glass throughout; ventilating wings.

Specifications and Prices subject to change without notice.

DOMINION MOTORS
258 Castlereagh Street, SYDNEY.

Telephone: MA 9351

Spare Parts and Service: 137 PALMER STREET, SYDNEY.

Telephone: FA 2111



Large, Roomy Interior!



Generous Rear Package Shelf!



Easy to handle . . . Thrilling to drive!



Feather Touch Parking Brake!



Wide Clear-Vision Safety Windshield!



Immense Storage Capacity!



Wide Rear Doors!



Beautiful Rear Quarter Window!



Luxurious Wide Rear Seat!



Willys HAS ALL THE *Style and Beauty* THAT YOU DEMAND . . . ALL THE *Economy* CONDITIONS DEMAND . . .

WILLYS has a straight-from-the-shoulder message to everyone who weighs the worth of a shilling.

It has been widely said that nearly all motor cars are good cars; that if they could all be shuffled together they would average about the same value. This is no longer so, however, with the advent of the new Willys.

Willys steps out ahead challenging all cars in intrinsic value . . . value that is not only seen by looking, but that which reveals itself continuously from sources of hidden quality through long dependable service.

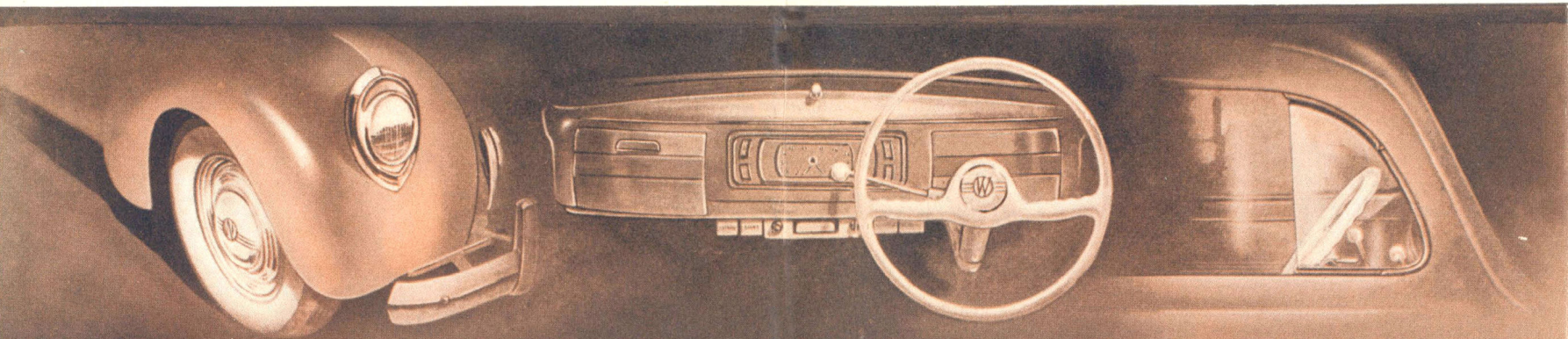
If you are looking for ultra-smart appearance, space and comfort, speed beyond normal usage, and dependable reliability, the new Willys has them all.

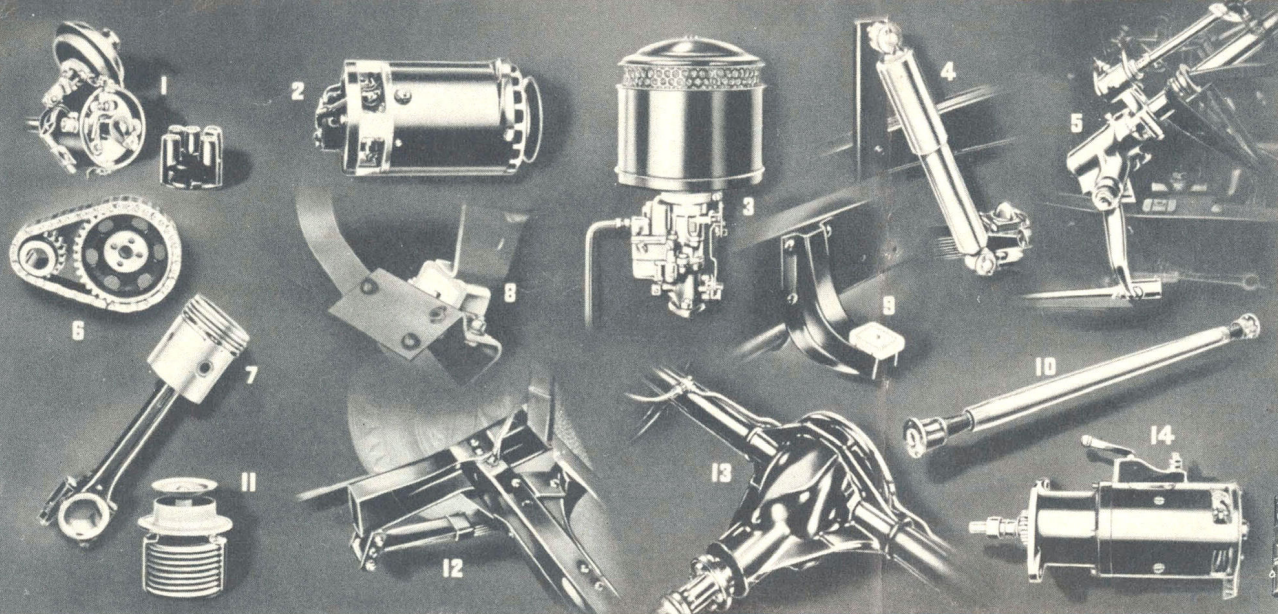
If you want, with all these desirable things, economical miles as well — and this is everyone's object these days — you won't find another petrol, oil, and tyre record to match that of the Willys.

These are *value facts* which will stand the closest and most critical study . . . which prove that Willys is the answer to the universal demand for pride of appearance, pride of performance, and pocket-book satisfaction.

Willys comes First again in 1941 Gilmore Trophy.

For six consecutive years 1936 to 1941 inclusive, the Willys has won against all comers in ton miles per gallon. Willys proves in these annual trophy events, that it will carry the same weight of passengers and average the same rate of speed as all more expensive cars, on far less petrol.





Here are the features that make Willys

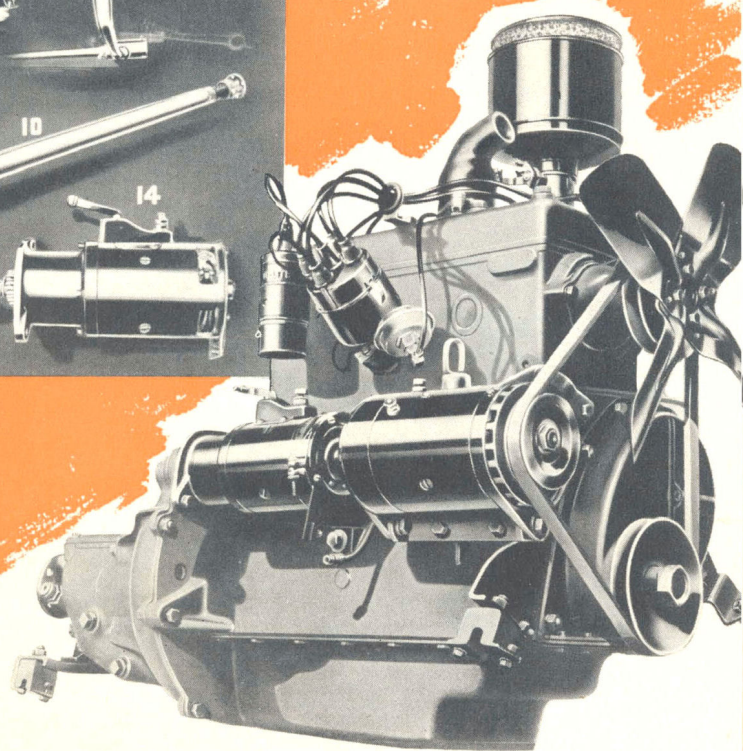
SO MUCH BETTER . . .

1. Dependable, quality built distributor.
2. Large high-output generator.
3. Air cleaner and large quiet carburettor.
4. Adjustable hydraulic shock-absorbers.
5. Latest steering mechanism, no road shock.
6. Quiet slap-proof timing chain.
7. Aluminium T-slot piston.
8. New type rubber engine mounting.
9. Complete rubber mounting on body.
10. Strong, rugged drive shaft.
11. Thermostat control of engine temperature.
12. Parabolic leaf springs with *metal covers*.
13. Rugged rear axle housing, Hypoid gears.
14. Powerful starting motor.

*. . . and the world-famous Willys Engine
for power, efficiency, and economy.*

**Willys runs 30,000 miles in 30 Days.
New World's Record for Stock Car.**

Officially checked and tested, the Willys Sedan completed 30,000 miles in 29 days 12 hours 24 minutes and finished in perfect condition. Even the tyres were still good for thousands of miles.



Sturdy, Rugged Strength

Willys UTILITY KEEPS

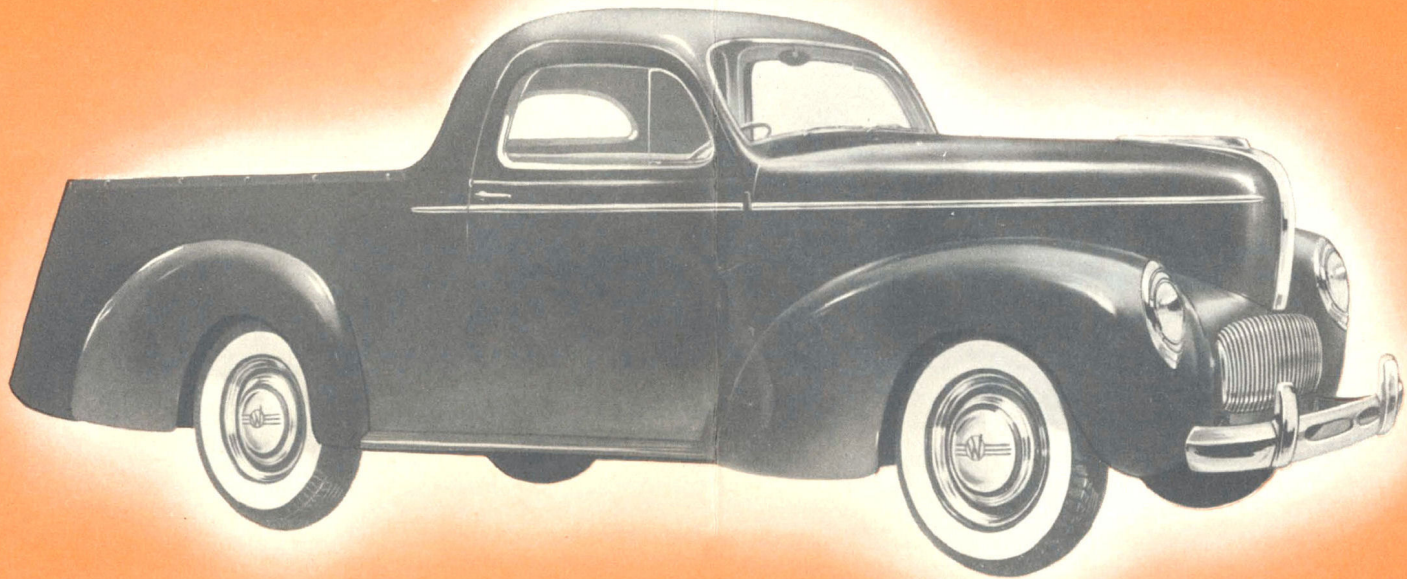
Willys Factory in High Gear on War Work.

The great Willys Factory is working full speed ahead on munitions and war orders for Britain, yet is able to continue producing for Australia, the fine new Willys Cars and Trucks herein illustrated. The Willys Factory is building thousands of four wheel drive, four-wheel steering, fast light-weight reconnaissance cars for the U.S. Army and abroad. The engine and general engineering of these new Army vehicles is the same as found in your own new Willys. Carrying the driver and two machine-gunners, the new Willys have exceptional speed, climb and manoeuvrability, backward or forward. The fact that these vehicles carry the standard Willys engine means much to every intending purchaser.

RUNNING COSTS AT A MINIMUM

The new Willys Coupe Utility offers strength and space to carry the same speedy, reliable transport at remarkably low cost per ton mile. It has a smart all-steel panelled body and leather upholstered coupe compartment. With

payload as any 6 or 8 cylinder utility, the Willys runs 10 to 16 more miles to the gallon, with other running costs proportionately low.





Large, Roomy Interior!



Generous Rear Package Shelf!



Feather Touch Parking Brake!



Wide Clear-Vision Safety Windshield!



Wide Rear Doors!



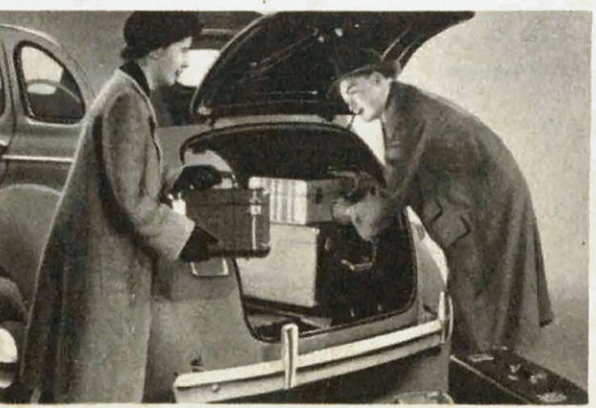
Beautiful Rear Quarter Window!



Luxurious Wide Rear Seat!



Easy to handle . . . Thrilling to drive!



Immense Storage Capacity!

Faithful construction—sterling quality

FOR LOW-COST UPKEEP

SPECIFICATIONS

AXLES—Rear: semi-floating. Six adjustable roller bearings. Hypoid type drive gears of nickel molybdenum steel. Chrome molybdenum axle shafts. Gear ratio: 4.44. Lubricant 1.666 Imperial pints. Front axle I-beam Reserve Elliott type, ball thrust bearings.

BODIES—All steel, welded into one piece. Rear quarter windows. Window ventilating wings with cam type lock. Cowl ventilator. Adjustable front seat. Exclusive Safety glass throughout.

BRAKES—(Service) Hydraulic, internal expanding, 9" nickel chromium alloy drums. Braking area 130 sq. in.

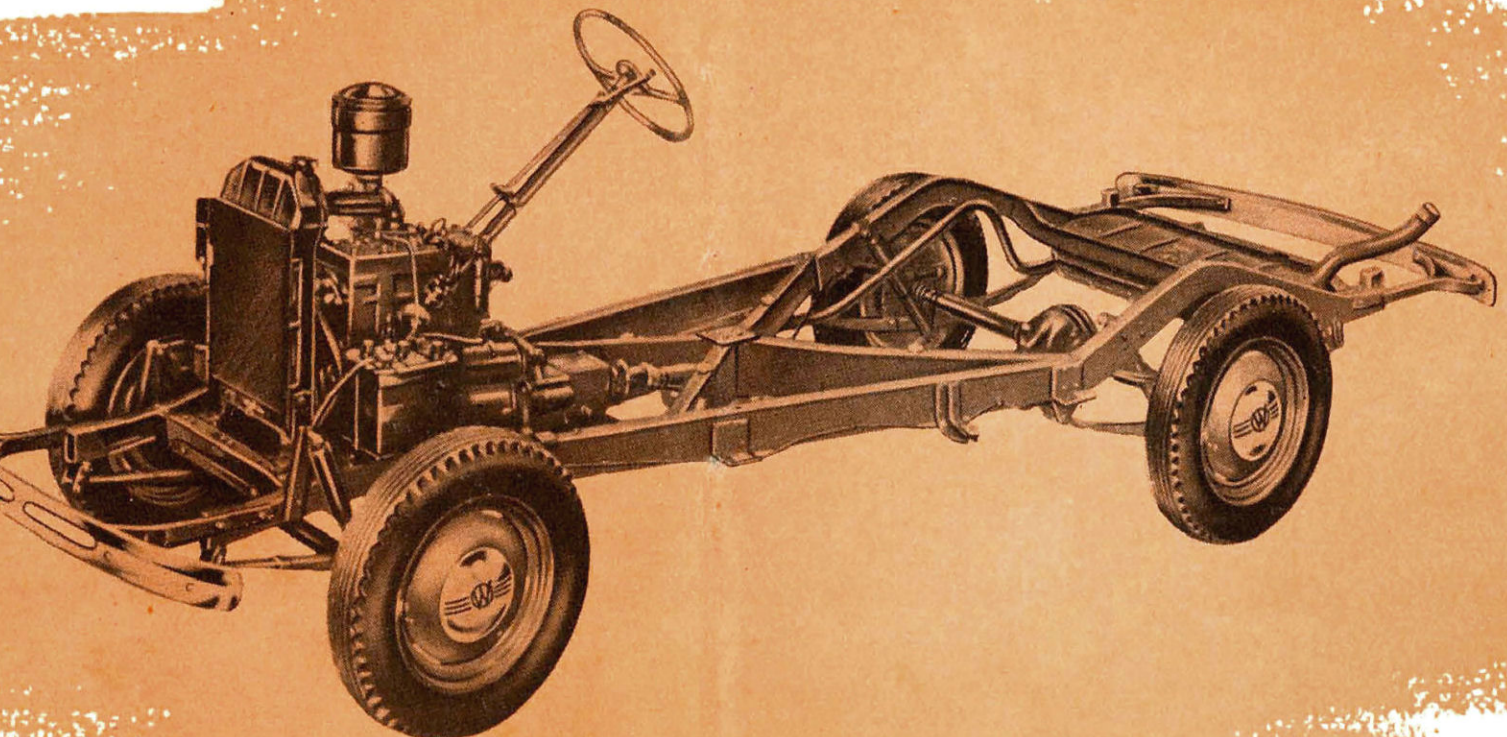
BRAKES—(Hand) Located on left, operated direct to rear wheel brakes.

CLUTCH—Single plate, dry type, 8" diameter. Torque dampener in clutch disc. Pre-lubricated clutch release bearing.

COOLING SYSTEM—Positive circulating water type. Efficient radiator. Directional cooling — full length water jacket. Double row ball bearing packless centrifugal water pump. Adjustable V-type fan belt. Thermostatic water control. Capacity 9.79 Imperial quarts.

CRANKSHAFT — Drop forged, counter-weighted, balanced statically and dynamically. Three replaceable, steel-backed babbit lined main bearings. Total bearing area 40 sq. in.

ENGINE—Mounted on four rubber supports. Four cylinders. "L" head type. Bore 3½". Stroke 4½". Horsepower 63 at 3800 R.P.M. Rated horsepower 15.63. Piston displacement 134.2 cu. in. Compression ratio 6.48. Cylinder block hard grey iron, mirror finished cylinder



walls; four bearing camshaft driven by silent timing chain. Aluminium alloy pistons with long connecting rods. Valve tappets equipped with clear-ance springs. Lubrication system full pressure type—direct oil pressure to main and connecting rod bearings, camshaft and timing chain. All other parts positively lubricated from oil spray holes in connecting rods. Floating type oil intake uses

only clean oil. Planetary gear type oil pump externally mounted on left side and driven from spiral gear on camshaft. Oil capacity—3.33 Imperial quarts.

ELECTRICAL SYSTEM — High output, radio type generator, air cooled. Voltage regulator type cut-out. Starter, 3 bearing type, Bendix Drive. Battery 13 plate, 6 volt 80 ampere hour capacity. Automatic (vacuum and

mechanical) ignition controlled spark advance. Firing order 1-3-4-2.

FRAME—Strong and rigid, double drop "KX" type.

FUEL SYSTEM—Petrol tank 9.79 Imperial gallons capacity. Air cleaner, (oil bath type available); automatic manifold heat control. Fuel pump with screen and sediment trap, operated from camshaft.

PISTONS—Aluminium alloy, T-slot, cam ground, tin plated. Graded for weight and size, selectively fitted in cylinders. Two taper-faced compression rings, one oil control ring. Piston pins 13" diameter. Connecting rods I-beam type, spun babbit bearing.

SHOCK ABSORBERS—Adjustable, hydraulic, two-way type, rubber mounted.

SPRINGS — Semi-elliptic, parabolic leaf type, metal covers. Length: front 36½", rear 46". Spring bolts and shackles mounted on rubber.

STEERING GEAR—Cam and lever type, 14 ratio; 17" steering wheel, two spoke. Turning radius 18 feet.

TYRES—5.50x16 black 4 ply non-skid type. Disc type 5 stud wheels.

TRANSMISSION — Synchromesh, 3 speed type, silent helical gears. Gearshift remote control mounted on steering column. Two ball and trunnion type universal joints with needle roller bearings.

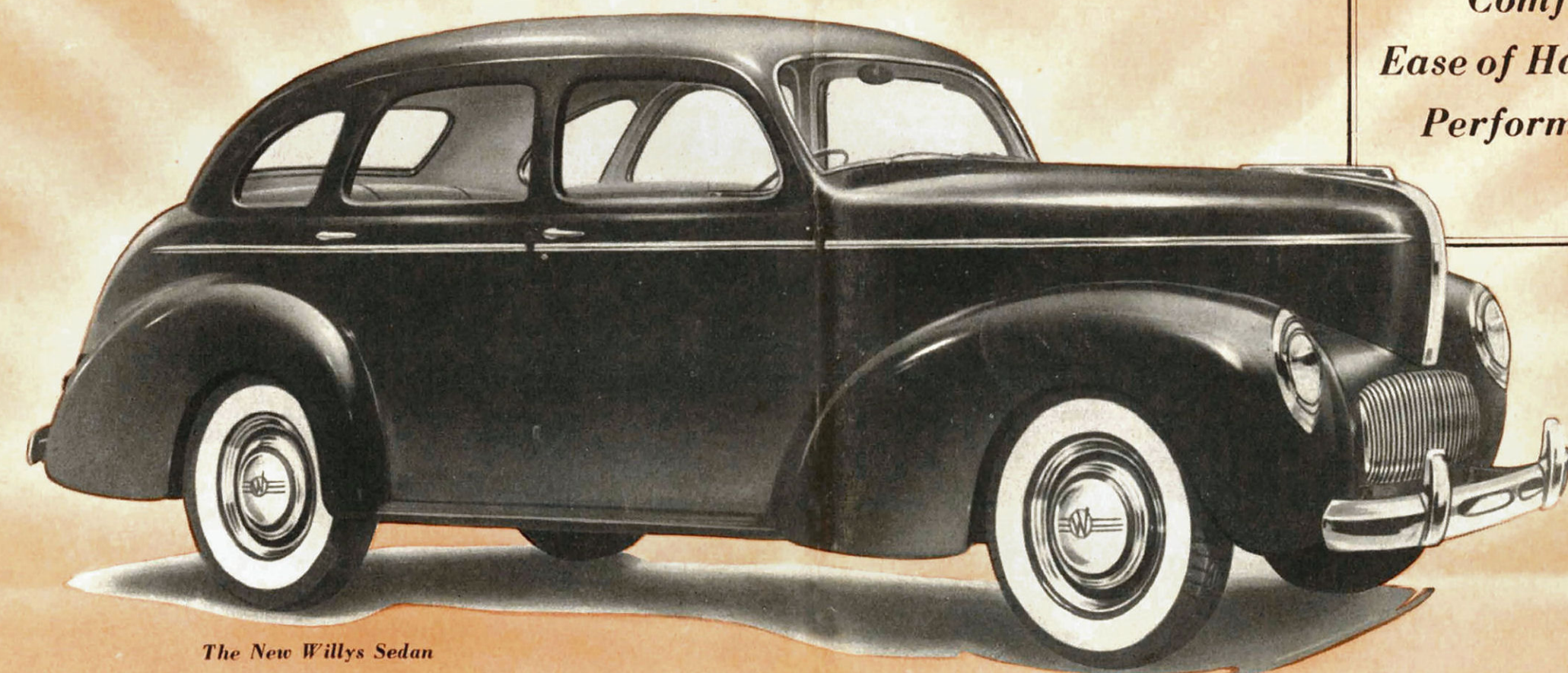
WHEELBASE—104 inches; standard tread (56" front; 58" rear); overall length with bumpers 181".

STANDARD EQUIPMENT—Variety of colors and upholstery available. Bumpers front and rear; bumper guards; high frequency horn; dual windshield wipers; rear view mirror; two adjustable sun visors; dome light; ash receiver in instrument panel; cigar lighter; two combination stop and tail lights; license light; heavy duty generator; beam control headlamps; parking lights in headlamps; tools and jack; spare wheel, tyre and tube; safety glass throughout; ventilating wings.

Specifications and Prices subject to change without notice.

WILLYS

has a most acceptable message for all who realize that Thrift is a new and vital National Necessity.



The New Willys Sedan

The Seven Essentials

Willys has them all.

Economy
Dependability

Safety

Beauty

Comfort

Ease of Handling

Performance

More economical motoring, lower cost-per-mile, than any other full-size car! That sums up in a single sentence what Willys offers the motorist who to-day is forced to consider economy as well as power, performance and

the prestige of fine appearance. Willys is as good as it is good-looking. 15.6 Horse power. Full size. Standard Track. Over 30 m.p.g. "THE IDEAL CAR FOR THE TIMES".

DOMINION MOTORS
258 Castlereagh Street, SYDNEY.

Telephone: MA 9351

Spare Parts and Service: 137 PALMER STREET, SYDNEY.

Telephone: FA 2111



Willys HAS ALL THE *Style and Beauty* THAT YOU DEMAND . . . ALL THE *Economy* CONDITIONS DEMAND . . .

WILLYS has a straight-from-the-shoulder message to everyone who weighs the worth of a shilling.

It has been widely said that nearly all motor cars are good cars; that if they could all be shuffled together they would average about the same value. This is no longer so, however, with the advent of the new Willys.

Willys steps out ahead challenging all cars in intrinsic value . . . value that is not only seen by looking, but that which reveals itself continuously from sources of hidden quality through long dependable service.

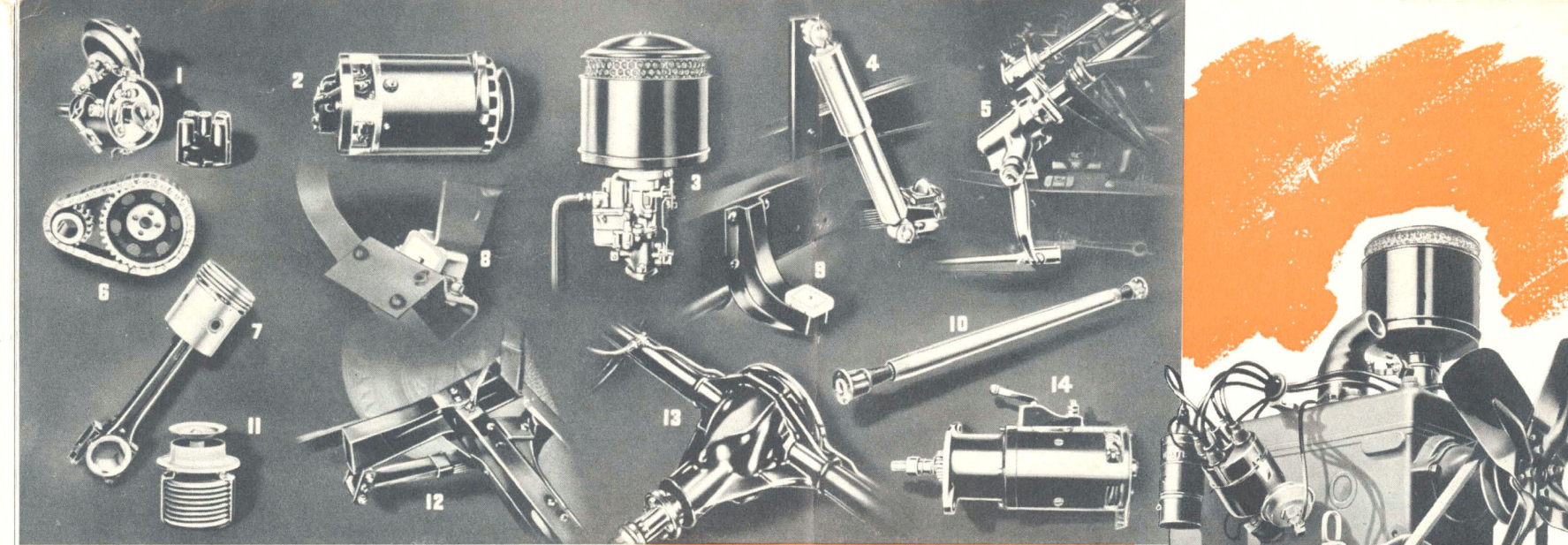
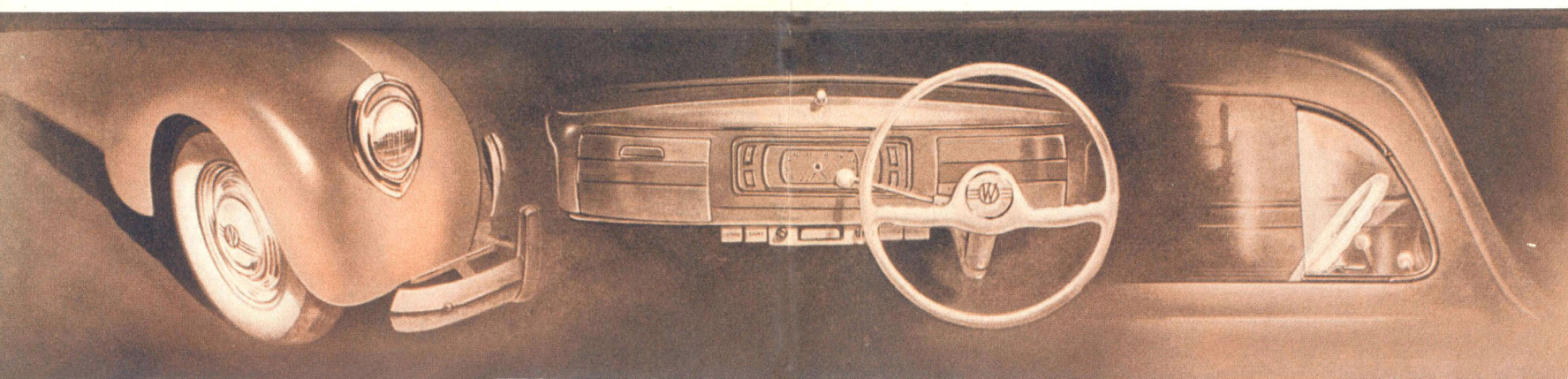
If you are looking for ultra-smart appearance, space and comfort, speed beyond normal usage, and dependable reliability, the new Willys has them all.

If you want, with all these desirable things, economical miles as well — and this is everyone's object these days — you won't find another petrol, oil, and tyre record to match that of the Willys.

These are *value facts* which will stand the closest and most critical study . . . which prove that Willys is the answer to the universal demand for pride of appearance, pride of performance, and pocket-book satisfaction.

*Willys comes First again in
1941 Gilmore Trophy.*

For six consecutive years 1936 to 1941 inclusive, the Willys has won against all comers in ton miles per gallon. Willys proves in these annual trophy events, that it will carry the same weight of passengers and average the same rate of speed as all more expensive cars, on far less petrol.



*Here are the features
that make Willys*

SO MUCH BETTER . . .

1. Dependable, quality built distributor.
2. Large high-output generator.
3. Air cleaner and large quiet carburettor.
4. Adjustable hydraulic shock-absorbers.
5. Latest steering mechanism, no road shock.
6. Quiet slap-proof timing chain.
7. Aluminium T-slot piston.
8. New type rubber engine mounting.
9. Complete rubber mounting on body.
10. Strong, rugged drive shaft.
11. Thermostat control of engine temperature.
12. Parabolic leaf springs with *metal covers*.
13. Rugged rear axle housing, Hypoid gears.
14. Powerful starting motor.

*. . . and the world-famous Willys Engine
for power, efficiency, and economy.*

**Willys runs 30,000 miles in 30 Days.
New World's Record for Stock Car.**

Officially checked and tested, the Willys Sedan completed 30,000 miles in 29 days 12 hours 24 minutes and finished in perfect condition. Even the tyres were still good for thousands of miles.

Sturdy, Rugged Strength IN THE NEW *Willys* UTILITY KEEPS

RUNNING COSTS AT A MINIMUM

The new Willys Coupe Utility offers strength and space to carry the same speedy, reliable transport at remarkably payload as any 6 or 8 cylinder utility, low cost per ton mile. It has a smart the Willys runs 10 to 16 more miles to the gallon, with other running costs all-steel panelled body and leather up- proportionately low. holstered coupe compartment. With

