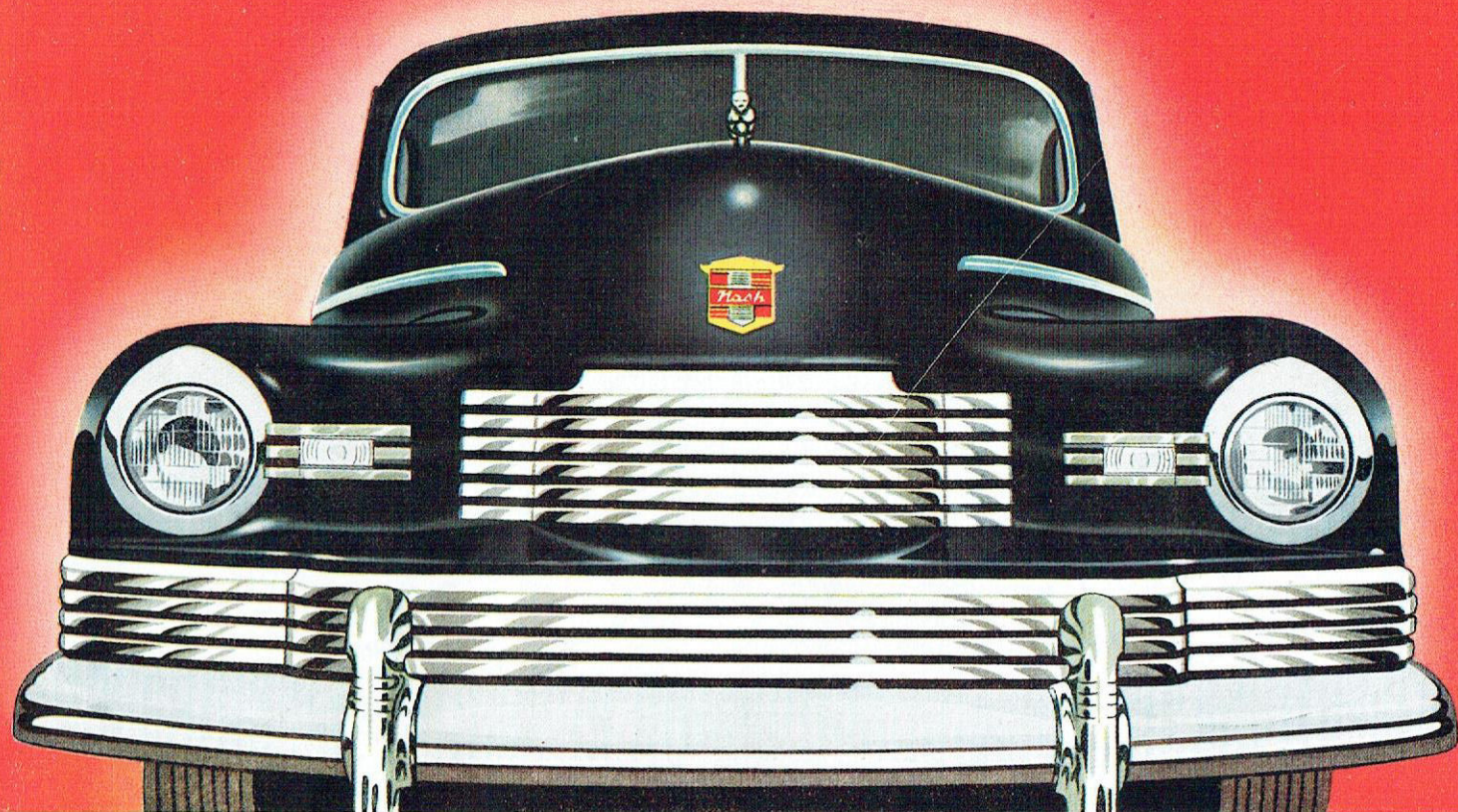


*Nash* THE SUPERLINER OF THE HIGHWAYS





# Nash "600" THE CAR OF TO-MORROW HERE TO-DAY

This Nash "600" is years ahead of the times — big, smart and full of "go"—yet gives you 25 to 30 miles a gallon at moderate highway speed !

**ENGINE FEATURES:** Sealed-in Manifold . . . Automatic Choke . . . Oil Bath Air Cleaner . . . Rifle-drilled Connecting Rods . . . 100% full pressure lubrication . . . Full Floating Piston Pin . . . Cylinders completely surrounded by water . . . minimizes wear . . . pressure cooling . . . provides better distribution of coolant, maintaining efficient temperatures for all working parts.

**CHASSIS FEATURES:** Individual front wheel suspension, coil springs on all four wheels, direct-acting hydraulic shock

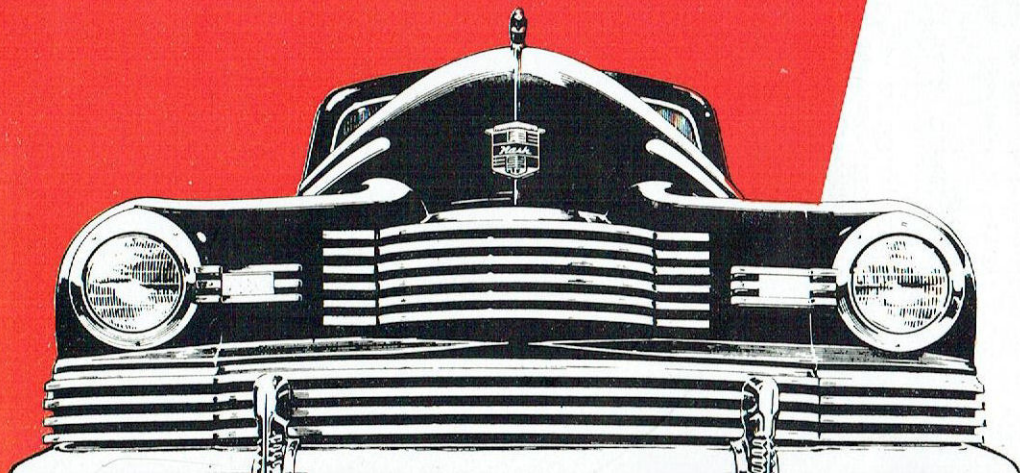
absorbers, torque tube drive, and stabilizer bar at rear, change bumpy riding into smooth comfort . . . 16 gallon fuel tank . . . 600-16 tires . . . Clutch pedal starter . . . an added Nash safety feature.

**BODY FEATURES:** All-steel unitized body and frame . . . greater rigidity, safety, roominess, quietness and economy . . . Sand-Mortex insulation . . . Rotary non-slam door locks.

**EXTRAS:** Optional equipment installed in your new Nash "600" at small extra charges . . . Weather eye conditioned air system . . . Nash Engineered Long Distance Radio . . . Seat Covers.



**You'll be ahead with**  
***Nash***



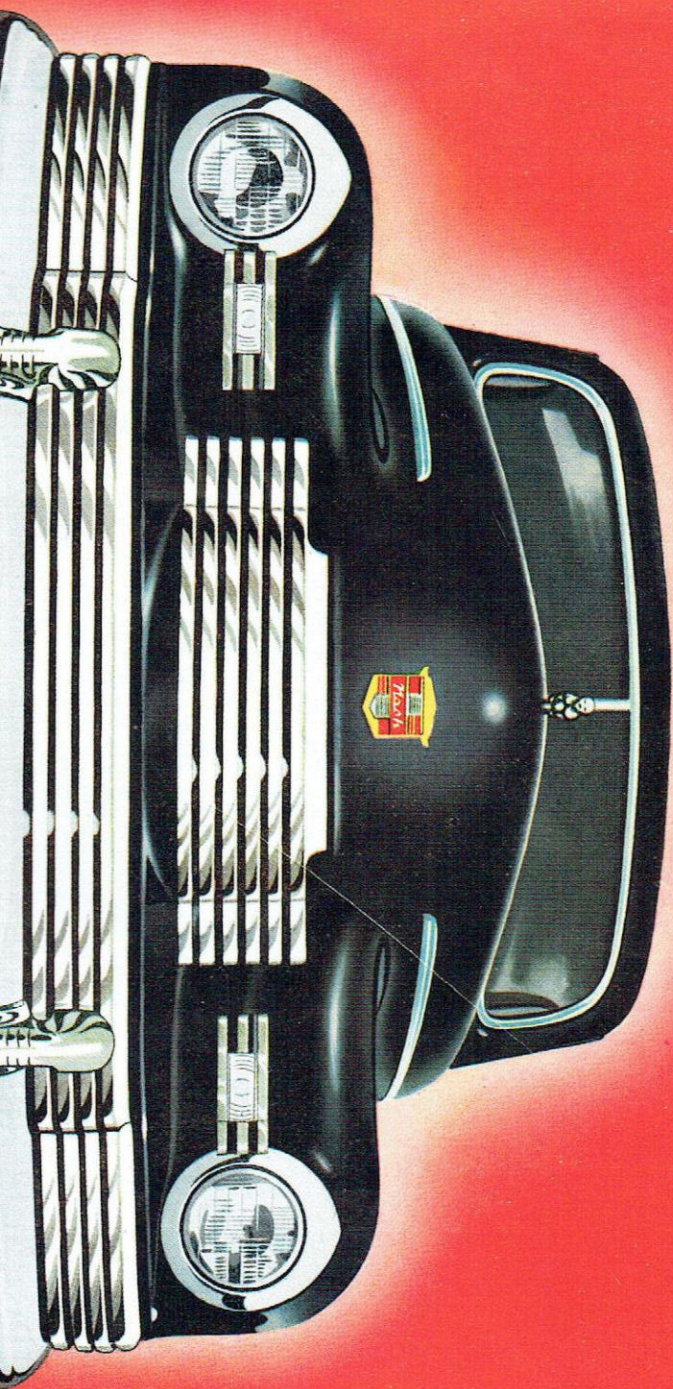
*Distributors for  
Victoria, Riverina and  
Tasmania:*

**RICKARDS BROS. PTY. LTD.**

**567-573 ELIZABETH STREET  
MELBOURNE**

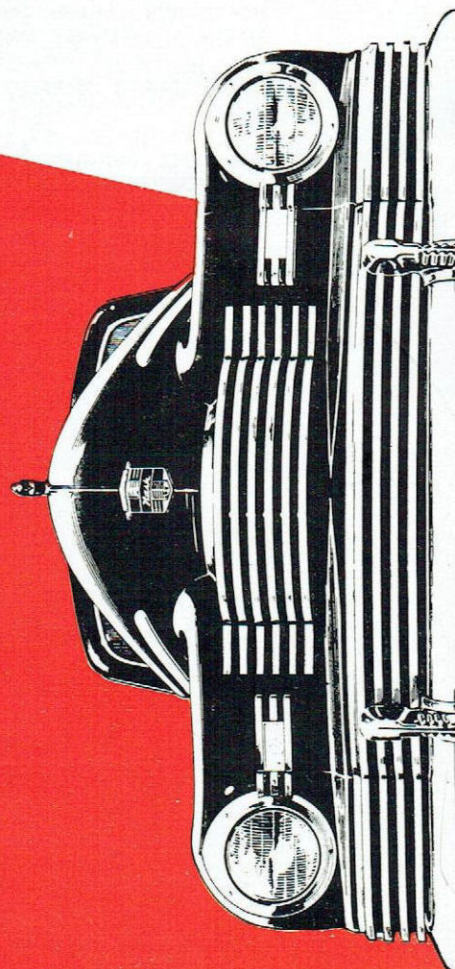
**PHONE: FJ 1181 (4 LINES)**





*Nash* THE SUPERLINER OF THE HIGHWAYS

You'll be ahead with  
*Nash*



Distributors for  
Victoria, Riverina and  
Tasmania:

**RICKARDS BROS. PTY. LTD.**

567-573 ELIZABETH STREET  
MELBOURNE

PHONE: FJ 1181 (4 LINES)

# *Nash* "600" THE CAR OF TO-MORROW HERE TO-DAY

This Nash "600" is years ahead of the times — big, smart and full of "go"—yet gives you 25 to 30 miles a gallon at moderate highway speed !

**ENGINE FEATURES:** Sealed-in Manifold . . . Automatic Choke . . . Oil Bath Air Cleaner . . . Rifle-drilled Connecting Rods . . . 100% full pressure lubrication . . . Full Floating Piston Pin . . . Cylinders completely surrounded by water . . . minimizes wear . . . pressure cooling . . . provides better distribution of coolant, maintaining efficient temperatures for all working parts.

**CHASSIS FEATURES:** Individual front wheel suspension, coil springs on all four wheels, direct-acting hydraulic shock

absorbers, torque tube drive, and stabilizer bar at rear, change bumpy riding into smooth comfort . . . 16 gallon fuel tank . . . 600-16 tires . . . Clutch pedal starter . . . an added Nash safety feature.

**BODY FEATURES:** All-steel unitized body and frame . . . greater rigidity, safety, roominess, quietness and economy . . . Sand-Mortex insulation . . . Rotary non-slam door locks.

**EXTRAS:** Optional equipment installed in your new Nash "600" at small extra charges . . . Weather eye conditioned air system . . . Nash Engineered Long Distance Radio . . . Seat Covers.



# The Nash Ambassador



## MASTER OF THE MEDIUM-PRICED FIELD

Year after year, for 30 years, the Nash Ambassador has ranked as one of America's finest automobiles. Now for 1947, the Ambassador has even more compelling beauty and a greater standard of performance. Nash engineers and designers did not overlook a single feature to make this new Ambassador the master of the medium-priced field.

### A CAR YOU'LL BE PROUD TO OWN AND DRIVE

Admired wherever it goes! Overall length from bumper to bumper is 208-9/16 inches, with a wheelbase of 121 inches. Time-proven 112 horsepower, valve-in-head engine. All of which contribute to the remarkable roadability of the 1947 Nash Ambassador.

## YOU'LL BE AHEAD WITH A 1947 NASH AMBASSADOR

### FEATURES

**ENGINE:** Sealed-in manifold, automatic choke, rifle-drilled connecting rods, 100% full pressure lubrication, full floating piston pin, oil filter, oil bath air cleaner, cylinders completely surrounded by water, and cross-flow radiator core with pressure cooling.

**BODY:** Unitized steel body with sub-frame, Sand-Mortex sound proofing rotary non-slam door locks, chrome side window reveals.

**CHASSIS:** Individual front wheel suspension, rubber-cushioned springs, direct-acting hydraulic shock absorbers, front ride stabilizer, 16-gallon fuel tank, 650-15 tires, and clutch pedal starter.

**EXTRAS:** Optional equipment installed in your new Nash Ambassador at small extra charges... Nash Weather Eye Conditioned Air System, Nash engineered long distance radio, overdrive with automatic overtake... seat covers.

### SPECIFICATIONS

**ENGINE:** 6 cylinders... L-Head, 82 Horsepower... Taxable H. P. 23.4... Bore  $3\frac{1}{2}$  inches... Stroke  $3\frac{3}{8}$  inches... Piston displacement 172.6 cubic inches... Steel Camshaft... Compression ratio 7.0 to 1... Oil capacity 5 quarts... Cooling system capacity 14 quarts.

**CHASSIS:** 112 inch wheelbase... gear ratio 4.1 to 1... overall length 199-9/16 inches... overall width  $75\frac{1}{4}$  inches.

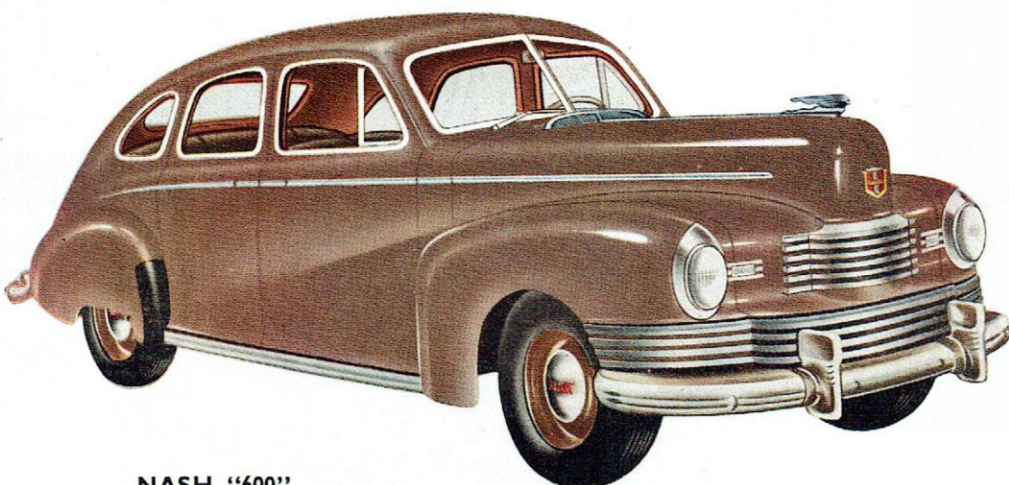
**BODY:** Width of front seat cushion  $57\frac{3}{8}$  inches... rear seat 50 inches... head room in front 38 inches... in rear  $36\frac{1}{2}$  inches... leg room in front and rear 42 inches each.

### SPECIFICATIONS

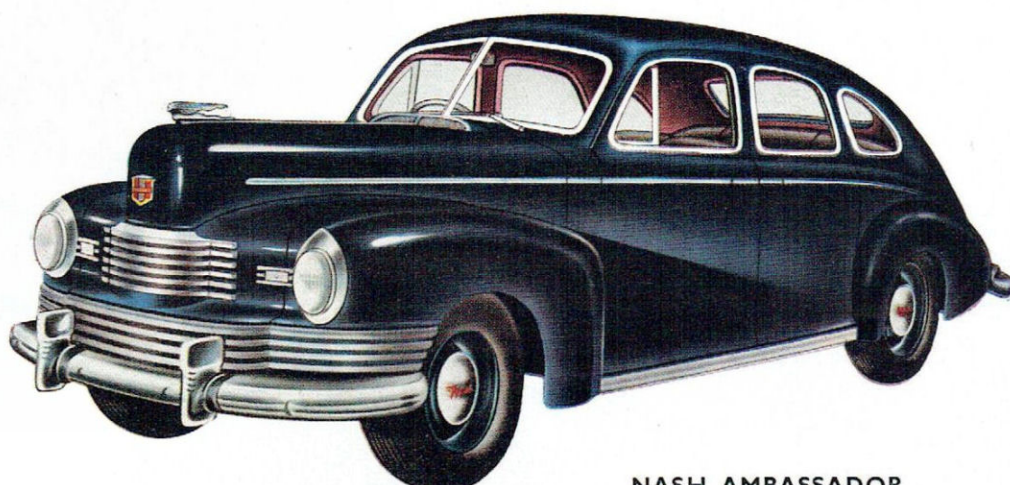
**ENGINE:** 6 cylinders. Valve-in-head. 112 horsepower. Taxable H. P. 27.3. Bore  $3\frac{3}{8}$  inches. Stroke  $4\frac{3}{8}$  inches. Piston displacement 234.8 cubic inches. Steel camshaft. Compression ratio 7.0 to 1. Oil capacity 6 quarts. Cooling system capacity 17 quarts.

**CHASSIS:** 121 inch wheelbase. Gear ratio 4.1 to 1. Overall length 208-9/16 inches. Overall width  $75\frac{1}{4}$  inches.

**BODY:** Width of front seat cushion  $57\frac{3}{8}$  inches, rear seat 50 inches; head room in front 38 inches, in rear  $36\frac{1}{2}$  inches; leg room in front and rear 42 inches each.



NASH "600"



NASH AMBASSADOR