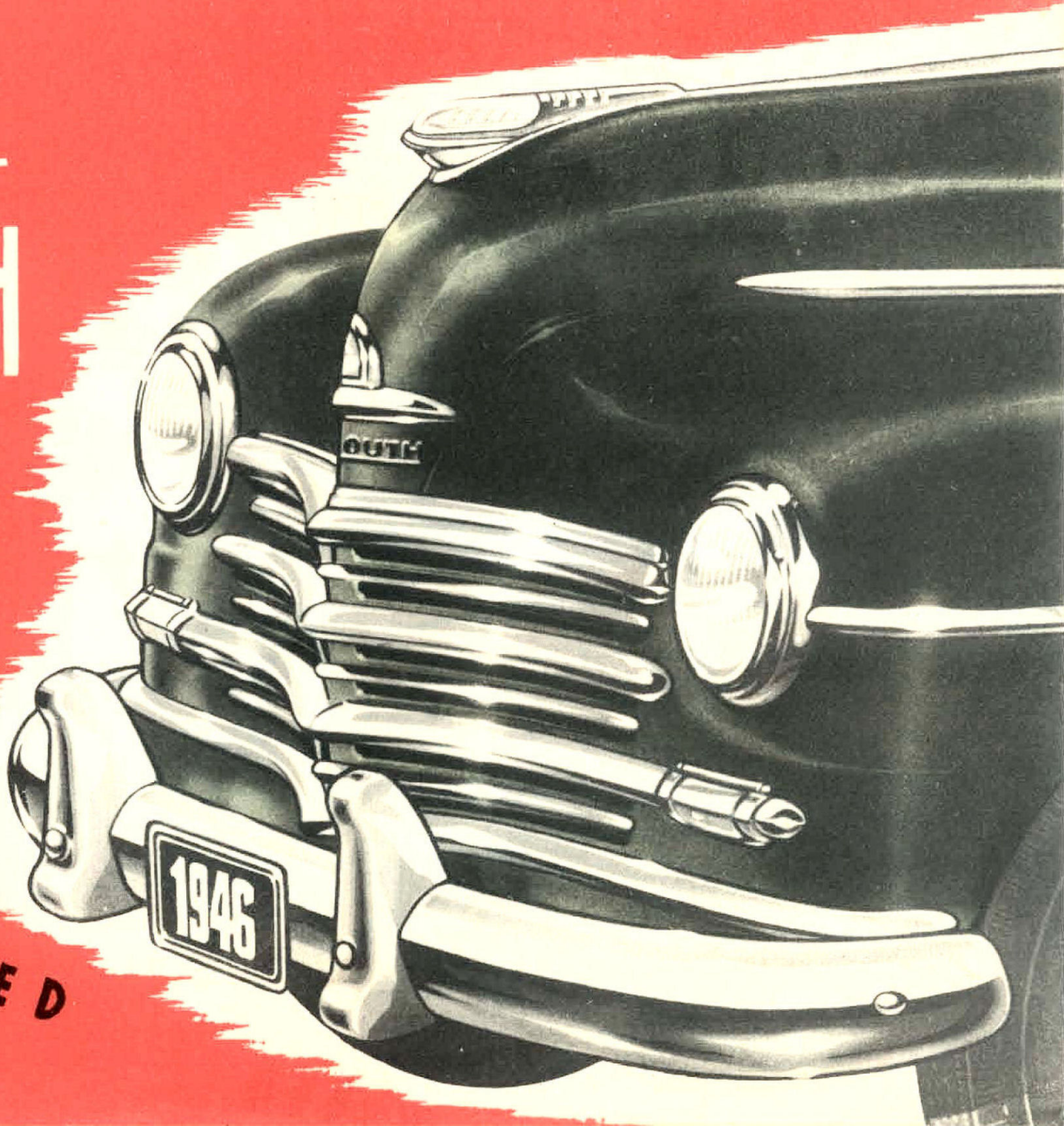


Chrysler
PLYMOUTH

- ITS SUPERFINISHED



Specifications

CHRYSLER-PLYMOUTH SPECIAL DE-LUXE SIX CYLINDER

AXLE, FRONT—Pantograph type, independently sprung front wheels.

AXLE, REAR—Silent hypoid type, semi-floating, with drive gears of "Amola" and nickle molybdenum steel. Roller bearings. Standard gear ratio, 4.1. Lubricant capacity, 2 $\frac{3}{4}$ pints.

BODIES—Richards' Safe-T-Steel, with seamless steel top. Body reinforced and braced with steel. Armourplate Safety Glass fitted to windshield and all side windows.

BRAKES—Four wheel Chrysler-Plymouth hydraulic type, internal expanding; 10 in. drums, brake lining contact area 158 sq. in. Trigger release hand-brake of external contracting type, operates independently of service brake.

CLUTCH—Single plate, dry, fully ventilated; 9 $\frac{1}{2}$ in. diameter. Ball thrust release bearing, lubricant sealed in.

COOLING SYSTEM—Centrifugal water pump. By-pass thermostat. Full-length water jackets. Four-blade 17-in. fan.

CRANKSHAFT—Four removable precision type main bearings.

CAMSHAFT—Silent chain-driven.

DRIVE—Hotchkiss, driving torque and thrust taken through rear springs. Tubular propeller shaft, 2 $\frac{3}{4}$ in. diameter. Cross type universal joints front and rear, with self-aligning roller bearings.

ELECTRICAL SYSTEM—Shunt type generator, with full voltage and current regulation, 35 ampere capacity. Positive shift starter. Vacuum controlled distributor. Safety signal speed indicator and instruments. Sealed beam type headlamps. Dual tail lamps. Front parking lights. Signal and licence lamps. Fifteen-plate battery, capacity 95 ampere hours. Aertone horn.

ENGINE—High torque, six-cylinder "L" head type. Floating power mountings. Bore, 3 $\frac{3}{8}$ in. Stroke, 4.1-16 in. Piston displacement, 218.06 cu. ins. S.A.E. horsepower, 27.34. Developed brake horsepower, 95 @ 3,600 r.p.m. Compression ratio, 6.5:1. Full pressure lubrication to all crankshaft, camshaft and connecting rod bearings. Crank-

case oil capacity, four quarts. Filtered crankcase ventilation. Oil filter.

FRAME—Rugged double-channel box section type frame. Side member depth, 6 in. Drop-centre type side members rigidly braced with four cross members.

FUEL SYSTEM—Plain tube down-draft carburettor, with idle control and adjustable accelerating pump. Automatic manifold heat control. Heavy duty oil bath air cleaner with intake silencer. Fuel filter. Fourteen-gallon supply tank. Electrical fuel gauge on instrument panel. Manual choke control.

SPRINGS—Independent front wheel springing, with coil springs of silico manganese steel. Semi-elliptic rear springs; length, 53 $\frac{3}{8}$ in.; width, 1 $\frac{3}{4}$ in.; 10 silico manganese steel leaves. Front sway eliminator.

SHOCK ABSORBERS—Direct double-acting Aero-hydraulic type front and rear.

STEERING—Rubber-cushioned shockless worm and roller type. Adjustable tapered roller worm thrust bearings. Steering gear ratio 18.2:1. Wheel diameter, 17 in. Remote control gearshift lever on steering column.

TRANSMISSION—Synchro-silent transmission, with helical gears throughout. Three speeds forward and reverse. Lubricant capacity, 2 1-3 pts.

WHEELBASE—117 $\frac{1}{2}$ in. Car overall length, 198 $\frac{1}{2}$ in. Overall width, 73 5-16 in.

WHEELS AND TYRES—Five demountable steel disc wheels with safety rims; 16 x 6.00 four-ply low pressure tyres. Spare wheel and tyre mounted in luggage compartment.

SUPERFINISH—Finishing to closer tolerances, and immeasurably lengthening the life of parts is made possible by the Chrysler-Plymouth development of Superfinishing. When reading these specifications, it is important to remember that vital moving parts are "Superfinished". "Superfinish" is literally the greatest protection that can be given your motor car investment.

ALL SPECIFICATIONS AND ACCEPTANCE OF ORDERS SUBJECT TO CHANGE WITHOUT NOTICE AND WITHOUT RESPONSIBILITY TO DISTRIBUTOR

LANES MOTORS PTY. LIMITED

89-109 EXHIBITION STREET, MELBOURNE

Distributor for Victoria

[A Member Company of C.D.D. (Aust.) Pty. Ltd. . . . A Company wholly owned and controlled in Australia]

Specifications

CHRYSLER-PLYMOUTH SPECIAL DE-LUXE SIX CYLINDER

AXLE, FRONT—Pantograph type, independently sprung front wheels.

AXLE, REAR—Silent hypoid type, semi-floating, with drive gears of "Amola" and nickle molybdenum steel. Roller bearings. Standard gear ratio, 4.1. Lubricant capacity, 2 $\frac{3}{4}$ pints.

BODIES—Richards' Safe-T-Steel, with seamless steel top. Body reinforced and braced with steel. Armourplate Safety Glass fitted to windshield and all side windows.

BRAKES—Four wheel Chrysler-Plymouth hydraulic type, internal expanding; 10 in. drums, brake lining contact area 158 sq. in. Trigger release hand-brake of external contracting type, operates independently of service brake.

CLUTCH—Single plate, dry, fully ventilated; 9 $\frac{1}{4}$ in. diameter. Ball thrust release bearing, lubricant sealed in.

COOLING SYSTEM—Centrifugal water pump. By-pass thermostat. Full-length water jackets. Four-blade 17-in. fan.

CRANKSHAFT—Four removable precision type main bearings.

CAMSHAFT—Silent chain-driven.

DRIVE—Hotchkiss, driving torque and thrust taken through rear springs. Tubular propeller shaft, 2 $\frac{3}{4}$ in. diameter. Cross type universal joints front and rear, with self-aligning roller bearings.

ELECTRICAL SYSTEM—Shunt type generator, with full voltage and current regulation, 35 ampere capacity. Positive shift starter. Vacuum controlled distributor. Safety signal speed indicator and instruments. Sealed beam type headlamps. Dual tail lamps. Front parking lights. Signal and licence lamps. Fifteen-plate battery, capacity 95 ampere hours. Aertone horn.

ENGINE—High torque, six-cylinder "L" head type. Floating power mountings. Bore, 3 $\frac{3}{8}$ in. Stroke, 4 1-16 in. Piston displacement, 218.06 cu. ins. S.A.E. horsepower, 27.34. Developed brake horsepower, 95 @ 3,600 r.p.m. Compression ratio, 6.5:1. Full pressure lubrication to all crankshaft, camshaft and connecting rod bearings. Crank-

case oil capacity, four quarts. Filtered crankcase ventilation. Oil filter.

FRAME—Rugged double-channel box section type frame. Side member depth, 6 in. Drop-centre type side members rigidly braced with four cross members.

FUEL SYSTEM—Plain tube down-draft carburettor, with idle control and adjustable accelerating pump. Automatic manifold heat control. Heavy duty oil bath air cleaner with intake silencer. Fuel filter. Fourteen-gallon supply tank. Electrical fuel gauge on instrument panel. Manual choke control.

SPRINGS—Independent front wheel springing, with coil springs of silico manganese steel. Semi-elliptic rear springs; length, 53 $\frac{3}{8}$ in.; width, 1 $\frac{3}{4}$ in.; 10 silico manganese steel leaves. Front sway eliminator.

SHOCK ABSORBERS—Direct double-acting Aero-hydraulic type front and rear.

STEERING—Rubber-cushioned shockless worm and roller type. Adjustable tapered roller worm thrust bearings. Steering gear ratio 18.2:1. Wheel diameter, 17 in. Remote control gearshift lever on steering column.

TRANSMISSION—Synchro-silent transmission, with helical gears throughout. Three speeds forward and reverse. Lubricant capacity, 2 1-3 pts.

WHEELBASE—117 $\frac{1}{2}$ in. Car overall length, 198 $\frac{1}{4}$ in. Overall width, 73 5-16 in.

WHEELS AND TYRES—Five demountable steel disc wheels with safety rims; 16 x 6.00 four-ply low pressure tyres. Spare wheel and tyre mounted in luggage compartment.

SUPERFINISH—Finishing to closer tolerances, and immeasurably lengthening the life of parts is made possible by the Chrysler-Plymouth development of Superfinishing. When reading these specifications, it is important to remember that vital moving parts are "Superfinished". "Superfinish" is literally the greatest protection that can be given your motor car investment.

ALL SPECIFICATIONS AND ACCEPTANCE OF ORDERS SUBJECT TO CHANGE WITHOUT NOTICE AND WITHOUT RESPONSIBILITY TO DISTRIBUTOR

LANES MOTORS PTY. LIMITED

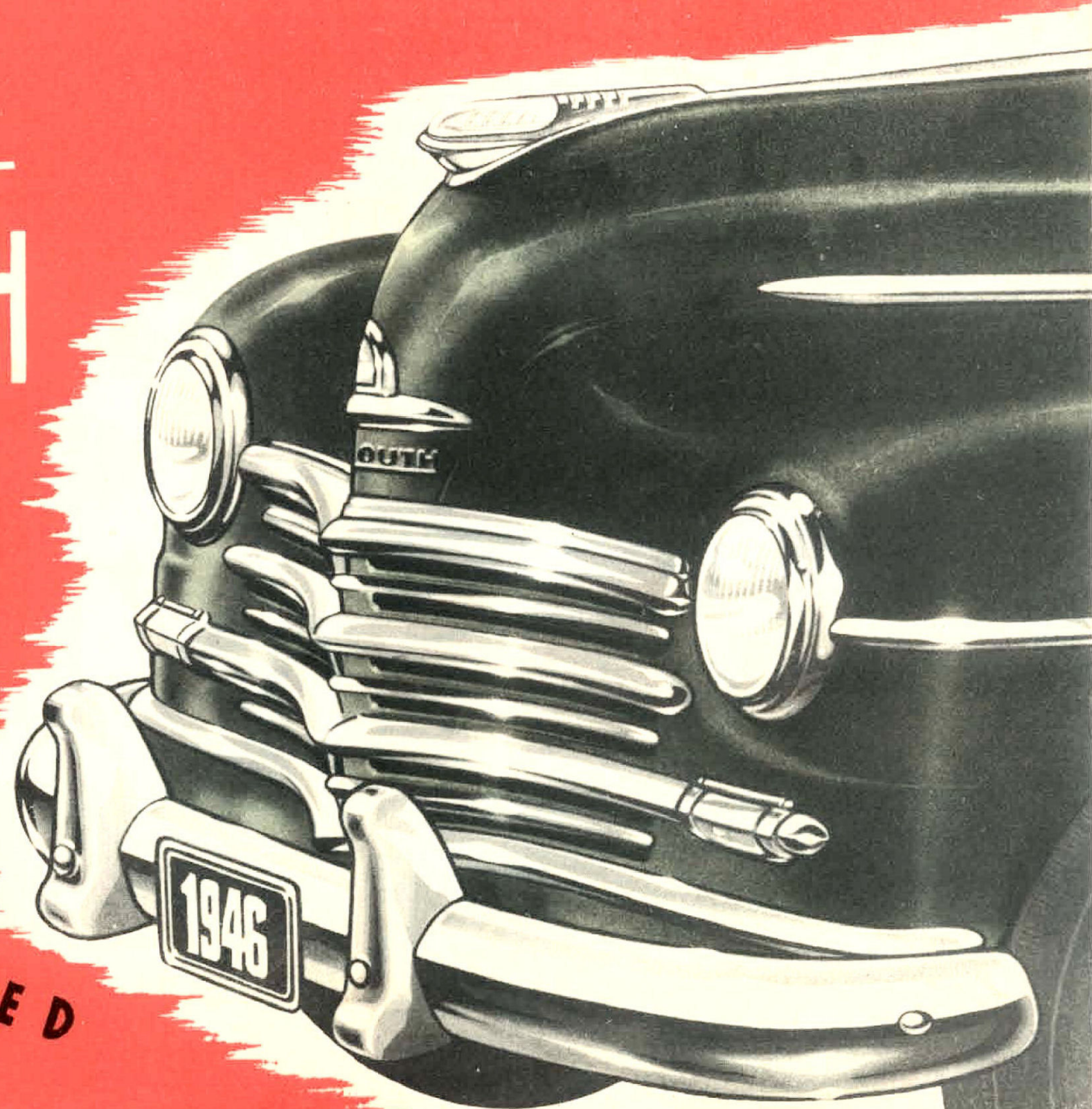
89-109 EXHIBITION STREET, MELBOURNE

Distributor for Victoria

[A Member Company of C.D.D. (Aust.) Pty. Ltd. . . . A Company wholly owned and controlled in Australia]

Chrysler
PLYMOUTH

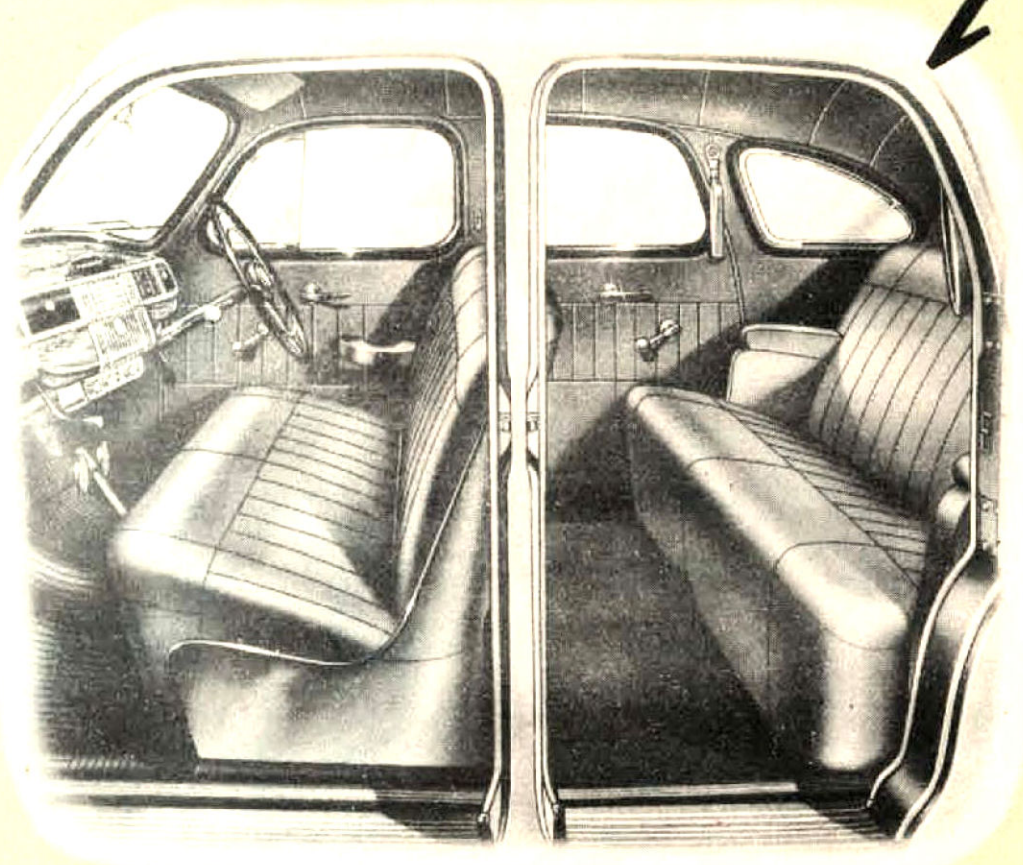
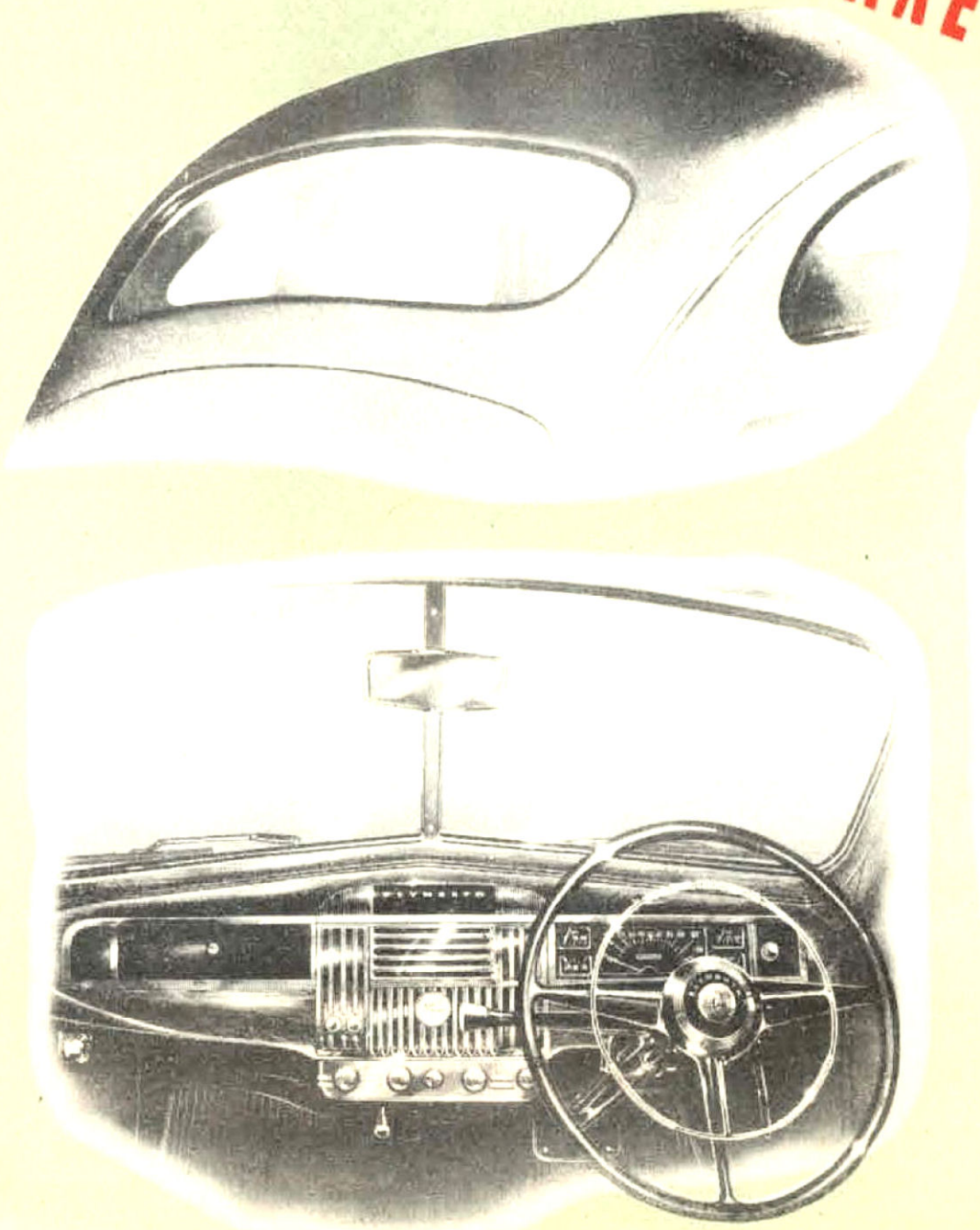
—ITS SUPERFINISHED



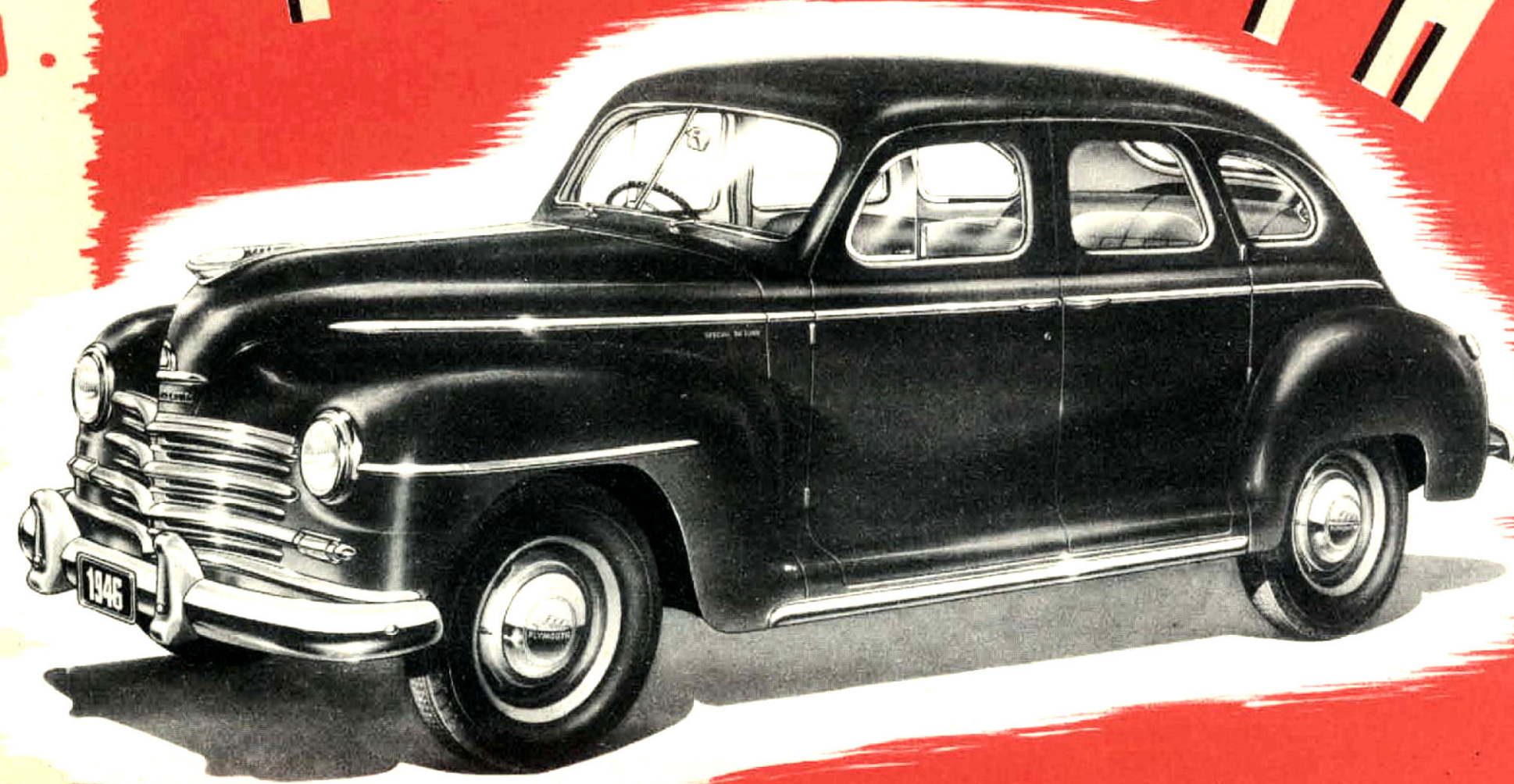
AGAIN... THE PACE MAKER IN THE MEDIUM PRICE FIELD.



Chrysler PLYMOUTH



Plymouth rear styling features the full-view curved glass window. Dashboard of lustrous plastic, has instruments grouped directly in front of driver. Dials have aircraft-type numerals for easy reading. Chrysler-Plymouth interior expertly combines smart, modern styling with roomy comfort, maximum safety, and practical serviceability.



It's Superfinished... important Plymouth parts are levelled off to a microscopically perfect surface that gives smooth, friction-free running, greatly lengthening the life of these parts, and making them virtually immune to normal wear. This great step forward in car engineering comes with new beautiful styling in

modern massiveness—impressive length and sleek, road-hugging lowness. Features include deep, wrap-around bumper bars, sealed-beam headlamps, self-locking bonnet, sway eliminator, floating power engine mounts, hypoid drive, and a host of other contributions to safety, comfort and trouble-free motoring.