

TWO SUPERB CARS
of outstanding beauty and performance



CHRYSLER
Plymouth

DeSoto



PRODUCTS OF CHRYSLER CORPORATION

Value Highlights!

CHRYSLER
Plymouth

95 H.P. ENGINE. with full pressure lubrication, floating power mountings, filtered crankcase ventilation, etc.

SUPERFINISH. Important Plymouth parts are finished with a microscopically perfect surface that gives smooth, friction-free running, greatly increased resistance to wear and longer life.

HYDRAULIC BRAKES. Special Chrysler-Plymouth type, with 10" brake drums and total lining area of 158 sq. ins. Trigger release handbrake.

INDEPENDENT FRONT SUSPENSION. Special pantograph type, with coil springs of silico manganese steel.

SILENT HYPOID REAR AXLE. Semi-floating, with drive gears of "Amola" and nickel molybdenum steel. Roller bearings.

RUGGED FRAME. Double channel box section type. Side members, 6" deep; 4 rugged cross members.

SYNCHRO - SILENT TRANSMISSION. with helical gears throughout.

SHOCKLESS STEERING. rubber cushioned, worm and roller type, with adjustable tapered roller worm thrust bearings.

DeSoto

HIGH-TORQUE 6-CYLINDER ENGINE. "L" head type. Floating power mountings, 95 b.h.p. U-slot, cam-ground plated aluminium pistons with 4 coated piston rings each.

RUGGED, DOUBLE CHANNEL BOX SECTION FRAME, with drop centre side members, 6" deep, rigidly braced with 4 cross members.

INDEPENDENT FRONT WHEEL SPRINGING, with coil springs of silico manganese steel. Semi-elliptic rear springs; length, 53½ in.; width, 1¼ in. 10 leaves. Front sway eliminator.

NEW IMPROVED BRAKES, hydraulic type, four-wheel internal expanding; 10 in. drums. Self-equalized and weatherproofed.

SYNCHRO - SILENT TRANSMISSION, with helical gears throughout. Semi-floating rear axle, silent hypoid type, with drive gears of "Amola" and nickel molybdenum steel.

RUBBER - CUSHIONED STEERING. Shockless, worm and roller type, with adjustable tapered roller bearings.

SUPERFINISH of important parts provides smooth friction-free running, greatly increased resistance to wear, and maximum life.

Distributors for Victoria and Southern Riverina

Lane's Motors Pty. Ltd.

89 Exhibition Street, Melbourne. Phone: Cent. 10490

in association with

AUTOMOBILES PTY. LTD.

Value Highlights!

CHRYSLER
Plymouth

95 H.P. ENGINE. with full pressure lubrication, floating power mountings, filtered crankcase ventilation, etc.

SUPERFINISH. Important Plymouth parts are finished with a microscopically perfect surface that gives smooth, friction-free running, greatly increased resistance to wear and longer life.

HYDRAULIC BRAKES. Special Chrysler-Plymouth type, with 10" brake drums and total lining area of 158 sq. ins. Trigger release handbrake.

INDEPENDENT FRONT SUSPENSION. Special pantograph type, with coil springs of silico manganese steel.

SILENT HYPOID REAR AXLE. Semi-floating, with drive gears of "Amola" and nickel molybdenum steel. Roller bearings.

RUGGED FRAME. Double channel box section type. Side members, 6" deep; 4 rugged cross members.

SYNCHRO-SILENT TRANSMISSION. with helical gears throughout.

SHOCKLESS STEERING. rubber cushioned, worm and roller type, with adjustable tapered roller worm thrust bearings.

DeSoto

HIGH-TORQUE 6-CYLINDER ENGINE. "L" head type. Floating power mountings, 95 b.h.p. U-slot, cam-ground plated aluminium pistons with 4 coated piston rings each.

RUGGED, DOUBLE CHANNEL BOX SECTION FRAME, with drop centre side members, 6" deep, rigidly braced with 4 cross members.

INDEPENDENT FRONT WHEEL SPRINGING, with coil springs of silico manganese steel. Semi-elliptic rear springs; length, 53½ in.; width, 1¼ in. 10 leaves. Front sway eliminator.

NEW IMPROVED BRAKES, hydraulic type, four-wheel internal expanding; 10 in. drums. Self-equalized and weatherproofed.

SYNCHRO-SILENT TRANSMISSION, with helical gears throughout. Semi-floating rear axle, silent hypoid type, with drive gears of "Amola" and nickel molybdenum steel.

RUBBER-CUSHIONED STEERING. Shockless, worm and roller type, with adjustable tapered roller bearings.

SUPERFINISH of important parts provides smooth friction-free running, greatly increased resistance to wear, and maximum life.

TWO SUPERB CARS
of outstanding beauty and performance



CHRYSLER
Plymouth

DeSoto



Distributors for Victoria and Southern Riverina
Lane's Motors Pty. Ltd.

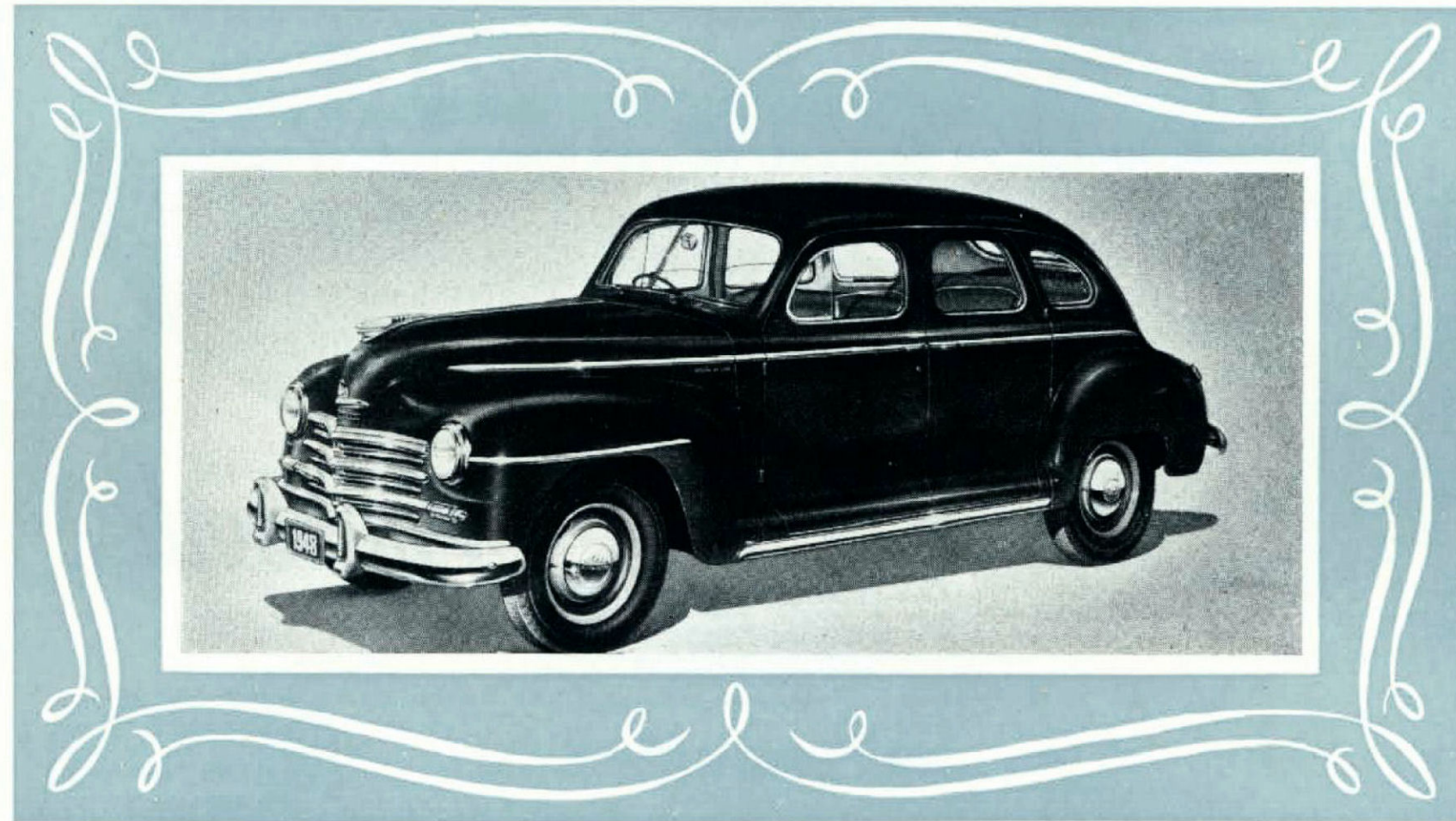
89 Exhibition Street, Melbourne. Phone: Cent. 10490

in association with

AUTOMOBILES PTY. LTD.

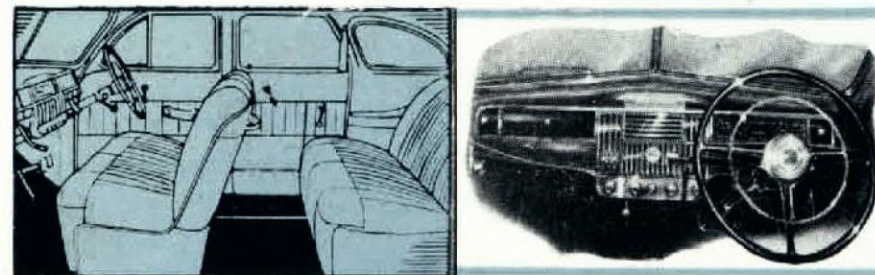
PRODUCTS OF CHRYSLER CORPORATION

Picture yourself behind the wheel of one of these world leaders in style and performance



The Chrysler Plymouth

Sit behind the wheel, and the smooth performance of Plymouth's big, 95-horsepower engine will amaze you . . . the roominess and comfort of its wide front and rear seats will impress you . . . and the modern convenience of automatic interior lighting, Safety-Signal Speedometer, and easy-to-reach push-button starter imparts new luxury to the beautiful new Plymouth — the leader in its field.



The De Soto

Relax behind the wheel of this beautiful new De Soto . . . drive it and you will marvel at its smooth, effortless operation, the superb comfort of its soft-cushioned ride. There's flashing power in the big silk-smooth engine, and surprising economy, too. Here is a car styled for moderns — a car that offers **everything** you have always wanted . . . that's why De Soto is the choice of people who are accustomed to the finer things of life.