

FROM A BRAND OLD NAME COMES AN ALL NEW CONCEPT OF DUAL PURPOSE VEHICLES



Dodge presents

the new Passenger

Coupe Utility. . .



DODGE Coupe Utility Specifications

DIMENSIONS.—Wheelbase 114," overall length 200," height 57" (outside), width 54". Truck front 56-5/16," rear 54-15/16." This coupe utility is engineered with correct load-distribution, so important for stability, ease of handling, tire life and long, trouble-free service. Load space dimensions are outstanding—45½" between wheel arches, 57" side-to-side. Floor length 80½" right hand side, 74½" left hand side where space is enclosed behind front seat back. Tailgate is 40" wide.

OUTSTANDING LOAD CAPACITY.—Gross vehicle weight 4,500 lbs., tare weight (3,410) 10 cwt. load capacity.

BIG TYRES, SAFETY-RIM WHEELS.—Wheels 16x4½ heavy duty (like great road clearance), and have exclusive Chrysler Safety-Rims. Tyres 6.00x16 (ply standard), 6.50x16 (ply optional extra).

SMOOTH RIDING.—Front end springs are heavy duty with extreme duty as an optional extra, rear end springs are mounted with fronts closer together than rear for added stability on turns. Spring action is synchronized, the front springs react to more first but rear springs react faster. Telescopic shock absorbers are fitted as standard equipment front and rear. These Shock Absorbers greatly cushion small bumps and offer correspondingly greater resistance to heavier jobs. A front sway eliminater bar removes any tendency to warp front end roll.

EXTRA STRENGTH IN CHASSIS FRAME.—Side rails are two massive channel members overlapped to form a boxlike construction. In addition, the coupe utility has a rugged 4 beam X member.

FREIGHT COMPARTMENT.—Is of sturdy double-level panel removable for repair. Hardwood floor with steel skid strips. Wide, strong bulk tailgate with heavy duty hinges have a secure loading platform for the freight compartment.

SAFEST UTILITY ON THE ROAD.—Subsidiary hydraulic brakes have dual hydraulic cylinders at the front wheels to balance the steering effort. Mounted brake hinges are bonded to them. Brake Drum Diameter is 7" Lining Area 2" x 23" (front), 2" x 20" (rear).

FRONT AND REAR AXLES.—Independently sprung front wheels "warp" over bumps. Rear axle is semi-floating with one-shock, spur hypoid drive gears. Rear axle ratio: 3.5 to 1 on Dodge Kingsway Custom, 4.1 to 1 on Overdrive, 3.54 to 1 with PowerFlite.

ELECTRICAL SYSTEM.—12 volt, 6 plate McPar battery with 80 amp. beam capacity. A governor control and vacuum spark advance to the distributor match timing to engine speed and load.

TRANSMISSION.—Three speed all helical gear arrangement second and third. Reverse control gear shift.

THE ENGINES

Dodge Kingsway Custom.—High torque, side valve 4 cylinder, overhead "L" head type. Bore 4½," stroke 4½," piston displacement 230.2 cub. in. Available horsepower 21.4, max. B.H.P. 114 @ 1,600 r.p.m. Maximum torque of 294 lbs. ft. at the very low engine revs. of 1,000. Compression ratio 7.59 to 1.

Dodge Kingsway Crusader and Custom.—6 cyl., bore 5-7/16," stroke 4½," displacement 250.6 cub. in., available horsepower 26.3, max. B.H.P. 147 @ 1,600 r.p.m. Maximum torque 305 lbs. ft. at the low engine revs. of 1,400, with Compression ratio 7.25 to 1.

FINISHION BUILT ENGINE.—Aluminium alloy pistons of light weight to lighten load on main and connecting rod bearings — all plated to prevent scuffing cylinder walls. Two oil, two compression rings, top ring chrome plated to add to cylinder life, lower ring the plated for perfect compression seal.

Reburn valve seats even tough to withstand heat and corrosion. Ball and Ball (Carrier) rollerbearers has 4 oiling systems for even driving need—Automatic checks, manifold low control, oil clearing, slotted bronze filter at 1½ imp. gallon fuel tank. Flooding oil intake with filtering screen, sealed type oil filter gives double protection against grit and dirt. Main bearings, lower connecting rod bearings, camshaft bearings all pressure lubricated. Efficient cooling system, cylinder walls cooled for full length, distributing tube circulates water on underside of exhaust valve ports.

OVERDRIVE.—Kingsway Crusader Automatic over-drive unit works in conjunction with the standard transmission, with electrical operation—manual lockout. Up and down shift controlled by accelerator. Maximum cut-in speed 25 mph. Gear ratio overdrive, 0.7 to 1. Final drive ratios without overdrive, Std. 4.11; 2nd, 2.54; 1st, 1.84; 1, reverse, 14.51:1. With overdrive, Std. 2.87:1; 2nd, 3.21:1; 1st, 2.30:1.

POWERFLITE AUTOMATIC TRANSMISSION.—Kingsway Custom.—Consists of torque converter and one planetary gear set operated by a hydraulic control system. Torque is supplied from the engine to the torque converter and is automatically increased within the transmission to meet driving conditions. A torque converter is similar to a fluid coupling, but has the distinct advantage of being able to multiply the torque, giving highest multiplication when the car is moving off and diminishing as it picks up speed. Powerflite control is by a lever on the steering column to select reverse, low, neutral or drive. Shift between low and high is automatic. Up and down shift in "Drive" position depends on throttle setting. Gear ratio: Reverse 3.59 to 1. Drive Range, Low 1.52 to 1. Drive 1.0 to 1. Final drive ratios—Reverse 14.5, Drive Range—Low 0.89, Direct 3.14.

WELL EQUIPPED.—Full width front and rear bumper bars. Smart, snug fitting tonneau cover. Fuel filler in left hand rear side panel. External rear view mirror. Rubber floor mat and sill pads. Spare wheel carried vertically behind seat and easily accessible. Well sprung, sedan type seat with tubular frame. Porch shelf behind seat. Backup light incorporated in tail and stop light end. Full kit of tools, tire pump and jack. Controlled ventilating windows, dual van visors, cigar lighter.

PARTS AND SERVICE.—Nationwide availability of McPar genuine Chrysler parts and skilled service facilities through authorized Distributors and Dealers.



The policy of Chrysler Australia Limited is one of continual improvement in design and manufacture wherever possible to meet a still new vehicle. Hence, specifications, equipment and prices (if subject to change without notice).



CHRYSLER AUSTRALIA LIMITED
Adelaide, South Australia

DODGE Coupe Utility Specifications

FROM A GRAND OLD NAME COMES A NEW NEW CONCEPT OF QUALITY PASSENGER



Dodge presents

the new Passenger

Coupe Utility... .



DIMENSIONS—Wheelbase 114, overall length 190, height 65 (including), width 74. Tuck floor 34-37/16. This coupe utility is engineered with correct load-distribution, an important factor in making, ease of handling, tire life and long, trouble-free service. Load space dimensions are outstanding—54" between wheel centers, 57" side to side, 41" floor capacity, 51 1/2" right hand side, 74" left hand side where spare is located behind front seat back. Tailgate is 46" wide.

OUTSTANDING LOAD CAPACITY—Gross vehicle weight 4,500 lbs. max weight (3,410) 10 cwt. load capacity.

BIG TYRES, SAFETY-RIM WHEELS—Wheels 16x4.50 heavy duty (40s gives good road clearance), and have exclusive Chrysler Safety-Rims. Tyres General Motors, Goodyear, Firestone, or optional Dunlop.

SMOOTH RIDING—front coil springs are heavy duty with current duty as an optional extra, rear leaf springs are mounted on frame, closer together than rear for added stability on turns. Spring action is synchronized, the front springs start to move first and rear springs react later. Telescopic shock absorbers are fitted as standard equipment front and rear. These Shock Absorbers greatly cushion small bumps and offer maximum resistance to heavy bumps only. A front over-ride bar restricts any tendency to react towards front end.

EXTRA STRENGTH IN CHASSIS FRAME—Side rails are two massive channel members overlapped to form a box-like construction. In addition, the coupe utility has a rugged I-beam X member.

BRIGHT COMPARTMENT is of sturdy double steel panels removable for repair. Hardwood floor with steel skid strips. Wide, strongly built tailgate with heavy-duty hinges and a reverse loading platform for the freight compartment.

SUREST UTILITY ON THE ROAD—Self-governed hydraulic brakes have dual hydraulic cylinders at the front which to balance the overall braking effort. Shocked braked drums are mounted to shoes. Brake Drum Diameter 10 1/2. Lining Area 2' x 21" (front), 2' x 14" (rear).

FRONT AND REAR AXLES—Independently sprung front wheels, step axle design. Rear axle is semi-trailing with steering, quiet spiral drive gears. Rear axle ratios: 3.9 to 1 on Dodge Kingway Custom, 4.1 to 1 on Overdrive, 3.54 to 1 with PowerFlite.

ELECTRICAL SYSTEM—12 volt, 4 plate MoPar battery with 60 amp. hours capacity. A generator, control and warning spark advance in the distributor match timing to engine speed and load.

TRANSMISSION—Three speed all helical gear synchromesh second and third. Remote control gear-kill.

THE ENGINES

Dodge Kingway Custom—High torque, side valve 6 cylinder, accessible 'L' head type. Bore 3 1/2" stroke 4 1/2" piston displacement 216.2 ccb. (cc). Torque horsepower 25.4 max. B.H.P. 114 @ 3,600 r.p.m. Maximum torque 188 lb. ft. @ 1,800 r.p.m. Max. engine rev. of 3,600. Compression ratio 7.58 to 1.

Dodge Kingway Crusader and Custom—6 cyl. bore 3-7/16" stroke 4 1/2" displacement 230.6 ccb. (cc). Torque horsepower 24.5 max. B.H.P. 117 @ 3,600 r.p.m. Maximum torque 185 lb. ft. @ 1,800 r.p.m. Max. engine rev. of 3,600. Compression ratio 7.25 to 1.

PRECISION BUILT ENGINE—Aluminium alloy plating of light weight to lighten load on main and connecting rod bearings—its fitted to piston cooling cylinder walls. Two oil ring compressors rings, top ring chrome plated to aid cylinder life, lower ring tin plated for perfect compression seal.

Exhaust valve seats extra tough to withstand heat and corrosion. Ball and Ball (Carter) carburettor has 4 warming system for every driving need—Automatic choke, manifold heat control, self cleaning, automatic bronze filter in 100 lbm. gallon fuel tank. Blasting oil intake with slaving screen, sealed type oil filter gives double protection against dirt and dust. Main bearings, lower connecting rod bearings, crankshaft bearing all pressure lubricated. Efficient cooling system, cylinder walls cooled by full length distributing tube circulates water on underside of exhaust valve ports.

OVERDRIVE—Kingway Crusader Automatic overdrive can work in conjunction with the standard transmission, with electrical operation—manual lock-out. Up and down shift controlled by accelerator. Maximum cut in speed 25 m.p.h. Gear ratio overdrive, 0.7 to 1. Final drive ratios without overdrive, 3rd, 4.1; 2nd, 7.5; 1st, 10.54; reverse, 10.3:1. With overdrive, 3rd, 2.87; 1st, 2nd, 5.2; 1st, 7.5:1.

POWERFLITE AUTOMATIC TRANSMISSION—Kingway Custom—Consists of torque converter and two planetary gear sets operated by a hydraulic control system. Torque is supplied from the engine to the torque converter and is automatically increased within the transmission to meet driving conditions. A torque converter is similar to a fluid coupling, but has the distinct advantage of being able to multiply the torque, giving highest multiplication when the car is moving off and diminishing as it picks up speed. Powerflite control is by a lever on the steering column to select reverse, low neutral or drive, shift between low and high is automatic. Up and down shift or "Drive" position depends on throttle setting. Gear ratio Reverse 3.99 to 1. Drive Range, Low 1.72 to 1. Direct 1.0 to 1. Final drive ratios—Reverse 3.6, Drive Range—Low 4.06, Direct 1.56.

WELL EQUIPPED—Full width front and rear bumper bars, bumper, shock absorber, torsion cross. Fuel filler in left hand rear side panel. External rear view mirror. Rubber floor mats and sill pads. Spare wheel carried vertically behind seat and easily accessible. Well sprung, sedan type seat with reclining frame. Parcel shelf behind seat. Backup light incorporated in tail and stop light unit. Full set of tools, tire pump and jack. Controlled venting windows, dual sun visors, cigar lighter.

PARTS AND SERVICE—Nationwide availability of MoPar genuine Chrysler parts and skilled service facilities through authorized Distributors and Dealers.

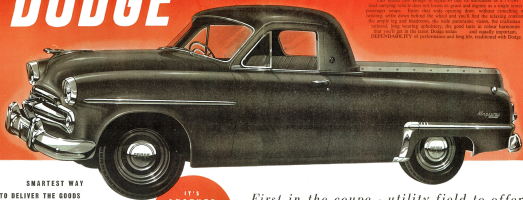
The policy of Chrysler Australia Limited is one of continual improvement in design and manufacture wherever possible to ensure it will have vehicles, heavy, semi-trailers, equipment and trucks (in subject) to change without notice.

CHRYSLER AUSTRALIA LIMITED
Adelaide, South Australia



DODGE

passenger - coupe utility



The brand new Dodge is rated as the most valuable as a 1957 load carrying vehicle class and better in price and dignity as a single seat passenger coupe. Even that wide opening door, without crumpling or twisting, sets down behind the wheel and you'll find the relaxing comfort, the ample leg and headroom, the wide panoramic vision, the cushions without long wearing upholstery, the good taste in colour harmonies. But you'll get it in the latest Dodge sedan and equally important, **DEPENDABILITY** of performance and long life, traditional with Dodge.

**SMARTEST WAY
TO DELIVER THE GOODS**
... and full 10 cent. capacity!

Gross Vehicle Weight 4,380 lbs. — grossing 10 cent. load capacity. Freight area measures 57" width overall, 45" between wheelchairs. Loading length maximum 81", maximum 74". Tailgate opening width 46". Body of double steel paneling, wood floor with steel skid strips. Extra strength in chassis frame, box section side rails 32" x 41" plus rugged X member

IT'S
ANOTHER
CHRYSLER
"FIRST"!

*First in the coupe - utility field to offer
the choice of these automatic features:-*



AUTOMATIC OVERDRIVE

A great asset if you drive long distances. Amazing flexibility with 2 additional forward gears — and this is the most automatic of all Overdrive controls. Overdrive reduces engine speeds 35% km, while road speeds remain unchanged ... gives as much in extra economy.



FULL-TIME POWER STEERING

What a difference this makes whether you're driving on business or pleasure, on narrow tracks or city streets. Hydraulic power steers over 80% of the steering effort for you — take and park with lightning touch — no wheeling against cross winds or gusts — no vehicle jerk can't be jerked off its course. Perfect, instant command at all times, perfect road "feel".

FULLY AUTOMATIC TRANSMISSION



Greatest feature ever offered for dual purpose, work and pleasure vehicles. "PowerDrive" is "no clutch" driving at its best. Seasonal take off — magnificent, effortless cranking, terrific climbing, easy parking ... auto. spark starting ... better engine braking on down grades ... "PowerDrive" puts Dodge Coupe Utility ahead — AUTOMATICALLY.

3 Models — **Kingway Custom**, 114 h.p. engine and conventional transmission. **Kingway Custom**, 117 h.p. engine and Automatic Overdrive. **Kingway Custom**, with 117 h.p. engine, "PowerDrive" fully automatic transmission, Full time Power Steering optional safety or moisture caps on all models.