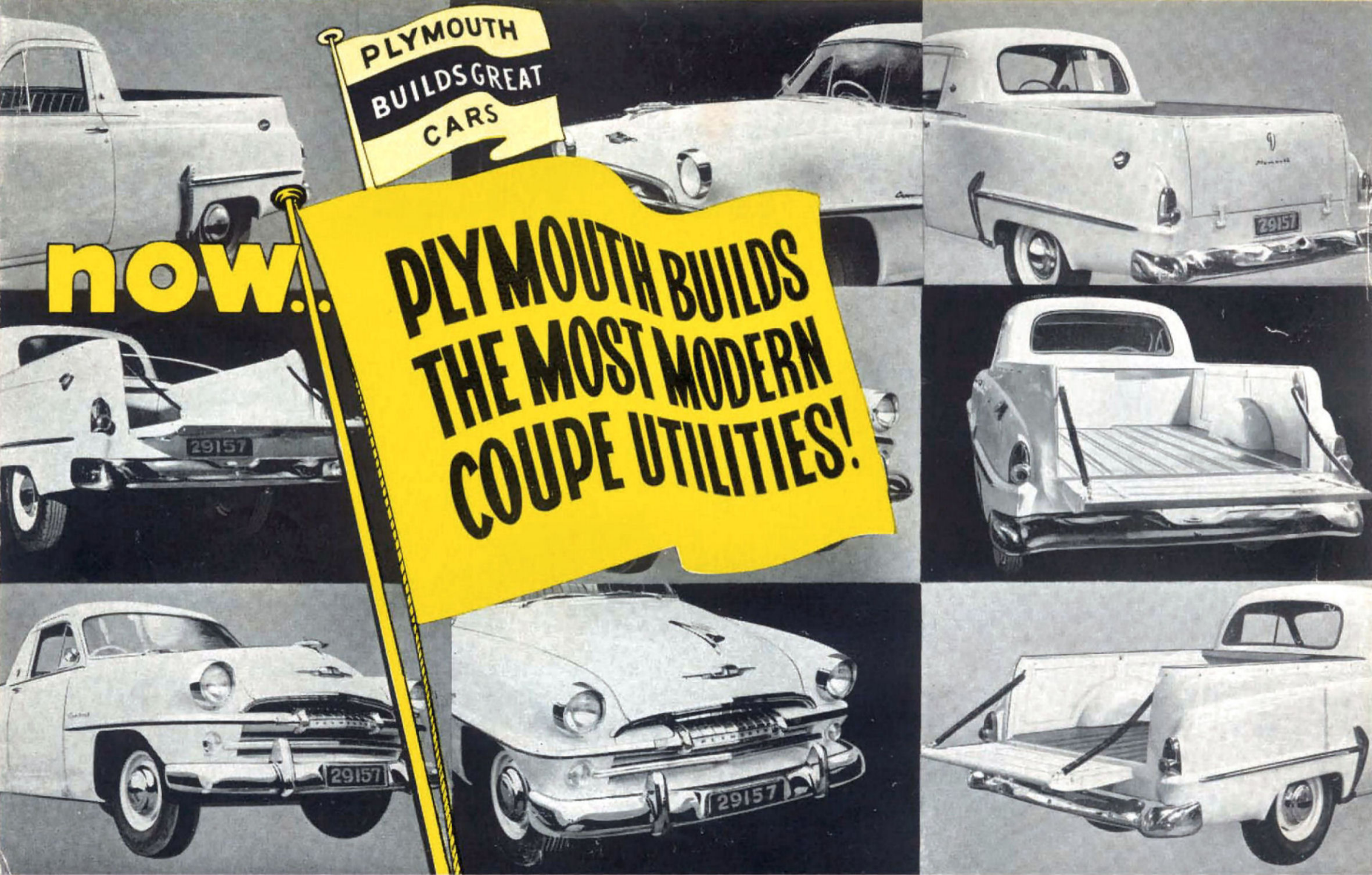


**PLYMOUTH
BUILDS GREAT
CARS**

now..

**PLYMOUTH BUILDS
THE MOST MODERN
COUPE UTILITIES!**



Feature Digest of the new PLYMOUTH Coupe Utilities

DIMENSIONS.—Wheelbase 114," overall length 190 $\frac{3}{4}$," height 63" (unladen), width 74." Track front 56-5/16," rear 58-15/16." This coupe utility is engineered with correct load-distribution, so important for stability, ease of handling, tyre life and long, trouble free service. Load space dimensions are outstanding—45 $\frac{1}{2}$ " between wheel arches, 57" side to side. Floor length 81 $\frac{3}{4}$ " R.H.S., 74 $\frac{1}{4}$ " L.H.S. where spare is enclosed behind front seat back. Tailgate is 46" wide.

OUTSTANDING LOAD CAPACITY.—Gross vehicle weight 4,500 lbs., tare weight (3416) 10 cwt. load capacity.

BIG TYRES, SAFETY-RIM WHEELS.—Wheels 16x4.50 heavy duty (good road clearance), and have exclusive Chrysler Safety-Rims. Tyres 6.00x16 6-ply std., 6.50x16 6-ply optional extra.

SMOOTH RIDING.—Front coil springs are heavy duty with extreme duty as an optional extra, rear leaf springs are mounted with fronts closer together than rear for added stability on turns. Spring action is synchronised, the front springs start to move first but rear springs react faster. Telescopic shock absorbers front and rear. A front sway eliminator bar restrains any tendency towards front end roll.

EXTRA STRENGTH IN CHASSIS FRAME.—Side rails are two massive channel members overlapped to form a boxlike construction. In addition, the coupe utility has a rugged I beam X member.

FREIGHT COMPARTMENT is of sturdy double steel panels removeable for repair. Hardwood floor with steel skid strips. Wide, strongly built tailgate with heavy duty hinges form a secure loading platform for the freight compartment.

SAFEST UTILITY ON THE ROAD.—"Safe-guard" hydraulic brakes have dual hydraulic cylinders at the front wheels to balance the overall braking effort. Moulded brake linings are bonded to shoes. Brake Drum Diameter 10." Lining Area 2"x21" (front), 2" x 18 $\frac{1}{2}$ " (rear).

FRONT AND REAR AXLES.—Independently sprung front wheels "step" over bumps. Rear axle is semi-floating with smooth, quiet hypoid drive gears. Rear axle ratios: 3.9 to 1 on Plymouth Cranbrook, 4.1 to 1 on Overdrive, 3.54 to 1 with PowerFlite Transmission.

THE ENGINES

Plymouth Cranbrook.—High torque side valve 6 cylinder, accessible "L" head type. Bore 3 $\frac{1}{4}$," stroke 4 $\frac{1}{2}$," piston displacement 230.2 cub. ins. Taxable horsepower 25.4, max. B.H.P. 114 @ 3,600 r.p.m. Maximum torque of 194 lbs. ft. at 1,600 r.p.m. Compression ratio 7.59 to 1.

Plymouth Savoy and Belvedere.—6 cyl., bore 3-7/16," Stroke 4 $\frac{1}{2}$," displacement 250.6 cub. ins., taxable horsepower 28.3, max. B.H.P. 117 @ 3,600 r.p.m. Maximum torque 205 lbs. ft. at 1,400 r.p.m. Compression ratio 7.25 to 1.

PRECISION BUILT ENGINE.—Aluminium alloy pistons of light weight — tin plated to prevent scuffing cylinder walls. Two oil, two compression rings, top ring chrome plated to add to cylinder life, lower ring tin plated for perfect compression seal. Exhaust valve seats extra tough to withstand heat and corrosion. Ball and Ball (Carter) carburettor has 4 metering systems for every driving need—Automatic choke, manifold heat control, self cleaning, sintered bronze filter in 1 $\frac{1}{2}$ Imp. gallon fuel tank. Floating oil intake with filtering screen, sealed type oil filter gives double protection against grit and dust. Main bearings, lower connecting rod bearings, camshaft bearings, all pressure lubricated. Cylinder walls cooled for full length, distributing tube circulates water on underside of exhaust valve ports.

ELECTRICAL SYSTEM.—12 volt 9 plate MoPar battery with 60 amp. hours capacity. A governor control and vacuum spark advance in the distributor match timing to engine speed and load.

TRANSMISSION.—3 speed all helical gears synchromesh 2nd and 3rd. Remote control gearshift.

OVERDRIVE.—Savoy Automatic overdrive unit works in conjunction with the standard transmission, with electrical operation—manual lock-out. Up and down shift controlled by accelerator. Minimum cut-in speed 25 m.p.h. Gear ratio overdrive, 0.7 to 1. Final drive ratios without overdrive. 3rd, 4.1:1; 2nd, 7.5:1; 1st, 10.54:1; reverse 14.31:1. With overdrive, 3rd, 2.87:1; 2nd, 5.25:1; 1st 7.38:1.

POWERFLITE AUTOMATIC TRANSMISSION :

PowerFlite control (Belvedere) is by a lever on the steering column to select reverse, low neutral or drive. Shift between low and high is automatic. Up and down shift in "Drive" position depends on throttle setting. Gear ratio: reverse 2.39 to 1. Drive Range: Low 1.72 to 1. Direct: 1.0 to 1. Final drive ratios—Reverse 8.46, Drive Range—Low 6.09, Direct 3.54.

WELL EQUIPPED.—Full width front and rear bumper bars. Smart snug fitting, tonneau cover. Fuel filler in left hand rear side panel. External rear view mirror. Rubber floor mat and sill pads. Spare wheel carried vertically behind seat and easily accessible. Well sprung, sedan type seat with tubular frame. Parcel shelf behind seat. Back-up light incorporated in tail and stop light unit. Full kit of tools, tyre pump and jack. Controlled ventilating windows, dual sun visors.



PARTS & SERVICE.—Nationwide availability of Mopar genuine Chrysler parts and skilled service facilities through authorised Distributors and Dealers.

The policy of Chrysler Australia Limited is one of continual improvement in design and manufacture wherever possible to assure a still finer vehicle. Hence, specifications, equipment and prices are subject to change without notice.



CHRYSLER AUSTRALIA LIMITED

Adelaide, South Australia



Feature Digest of the new PLYMOUTH Coupe Utilities

DIMENSIONS.—Wheelbase 114," overall length 190 $\frac{1}{2}$," height 63" (unladen), width 74." Track front 56-5/16," rear 58-15/16." This coupe utility is engineered with correct load-distribution, so important for stability, ease of handling, tyre life and long, trouble free service. Load space dimensions are outstanding—45 $\frac{1}{2}$ " between wheel arches, 57" side to side. Floor length 81 $\frac{1}{2}$ " R.H.S., 74 $\frac{1}{2}$ " L.H.S. where spare is enclosed behind front seat back. Tailgate is 46" wide.

OUTSTANDING LOAD CAPACITY.—Gross vehicle weight 4,500 lbs., tare weight (3416) 10 cwt. load capacity.

BIG TYRES, SAFETY-RIM WHEELS.—Wheels 16x4.50 heavy duty (good road clearance), and have exclusive Chrysler Safety-Rims. Tyres 6.00x16 6-ply std., 6.50x16 6-ply optional extra.

SMOOTH RIDING.—Front coil springs are heavy duty with extreme duty as an optional extra, rear leaf springs are mounted with fronts closer together than rear for added stability on turns. Spring action is synchronised, the front springs start to move first but rear springs react faster. Telescopic shock absorbers front and rear. A front sway eliminator bar restrains any tendency towards front end roll.

EXTRA STRENGTH IN CHASSIS FRAME.—Side rails are two massive channel members overlapped to form a boxlike construction. In addition, the coupe utility has a rugged I beam X member.

FREIGHT COMPARTMENT is of sturdy double steel panels removeable for repair. Hardwood floor with steel skid strips. Wide, strongly built tailgate with heavy duty hinges form a secure loading platform for the freight compartment.

SAFEST UTILITY ON THE ROAD.—"Safeguard" hydraulic brakes have dual hydraulic cylinders at the front wheels to balance the overall braking effort. Moulded brake linings are bonded to shoes. Brake Drum Diameter 10." Lining Area 2"x21" (front), 2" x 18 $\frac{1}{2}$ " (rear).

FRONT AND REAR AXLES.—Independently sprung front wheels "step" over bumps. Rear axle is semi-floating with smooth, quiet hypoid drive gears. Rear axle ratios: 3.9 to 1 on Plymouth Cranbrook, 4.1 to 1 on Overdrive, 3.54 to 1 with PowerFlite Transmission.

THE ENGINES

Plymouth Cranbrook.—High torque side valve 6 cylinder, accessible "L" head type. Bore 3 $\frac{1}{4}$," stroke 4 $\frac{1}{2}$," piston displacement 230.2 cub. ins. Taxable horsepower 25.4, max. B.H.P. 114 @ 3,600 r.p.m. Maximum torque of 194 lbs. ft. at 1,600 r.p.m. Compression ratio 7.59 to 1.

Plymouth Savoy and Belvedere.—6 cyl., bore 3-7/16," Stroke 4 $\frac{1}{2}$," displacement 250.6 cub. ins., taxable horsepower 28.3, max. B.H.P. 117 @ 3,600 r.p.m. Maximum torque 205 lbs. ft. at 1,400 r.p.m. Compression ratio 7.25 to 1.

PRECISION BUILT ENGINE.—Aluminium alloy pistons of light weight — tin plated to prevent scuffing cylinder walls. Two oil, two compression rings, top ring chrome plated to add to cylinder life, lower ring tin plated for perfect compression seal. Exhaust valve seats extra tough to withstand heat and corrosion. Ball and Ball (Carter) carburettor has 4 metering systems for every driving need—Automatic choke, manifold heat control, self cleaning, sintered bronze filter in 12 $\frac{1}{2}$ Imp. gallon fuel tank. Floating oil intake with filtering screen, sealed type oil filter gives double protection against grit and dust. Main bearings, lower connecting rod bearings, camshaft bearings, all pressure lubricated. Cylinder walls cooled for full length, distributing tube circulates water on underside of exhaust valve ports.

ELECTRICAL SYSTEM.—12 volt 9 plate MoPar battery with 60 amp. hours capacity. A governor control and vacuum spark advance in the distributor match timing to engine speed and load.

TRANSMISSION.—3 speed all helical gears synchromesh 2nd and 3rd. Remote control gearshift.

OVERDRIVE.—Savoy Automatic overdrive unit works in conjunction with the standard transmission, with electrical operation—manual lock-out. Up and down shift controlled by accelerator. Minimum cut-in speed 25 m.p.h. Gear ratio overdrive, 0.7 to 1. Final drive ratios without overdrive. 3rd, 4.1:1; 2nd, 7.5:1; 1st, 10.54:1; reverse 14.31:1. With overdrive, 3rd, 2.87:1; 2nd, 5.25:1; 1st 7.38:1.

POWERFLITE AUTOMATIC TRANSMISSION: PowerFlite control (Belvedere) is by a lever on the steering column to select reverse, low neutral or drive. Shift between low and high is automatic. Up and down shift in "Drive" position depends on throttle setting. Gear ratio: reverse 2.39 to 1. Drive Range: Low 1.72 to 1. Direct: 1.0 to 1. Final drive ratios—Reverse 8.46, Drive Range—Low 6.09, Direct 3.54.

WELL EQUIPPED.—Full width front and rear bumper bars. Smart snug fitting, tonneau cover. Fuel filler in left hand rear side panel. External rear view mirror. Rubber floor mat and sill pads. Spare wheel carried vertically behind seat and easily accessible. Well sprung, sedan type seat with tubular frame. Parcel shelf behind seat. Back-up light incorporated in tail and stop light unit. Full kit of tools, tyre pump and jack. Controlled ventilating windows, dual sun visors.



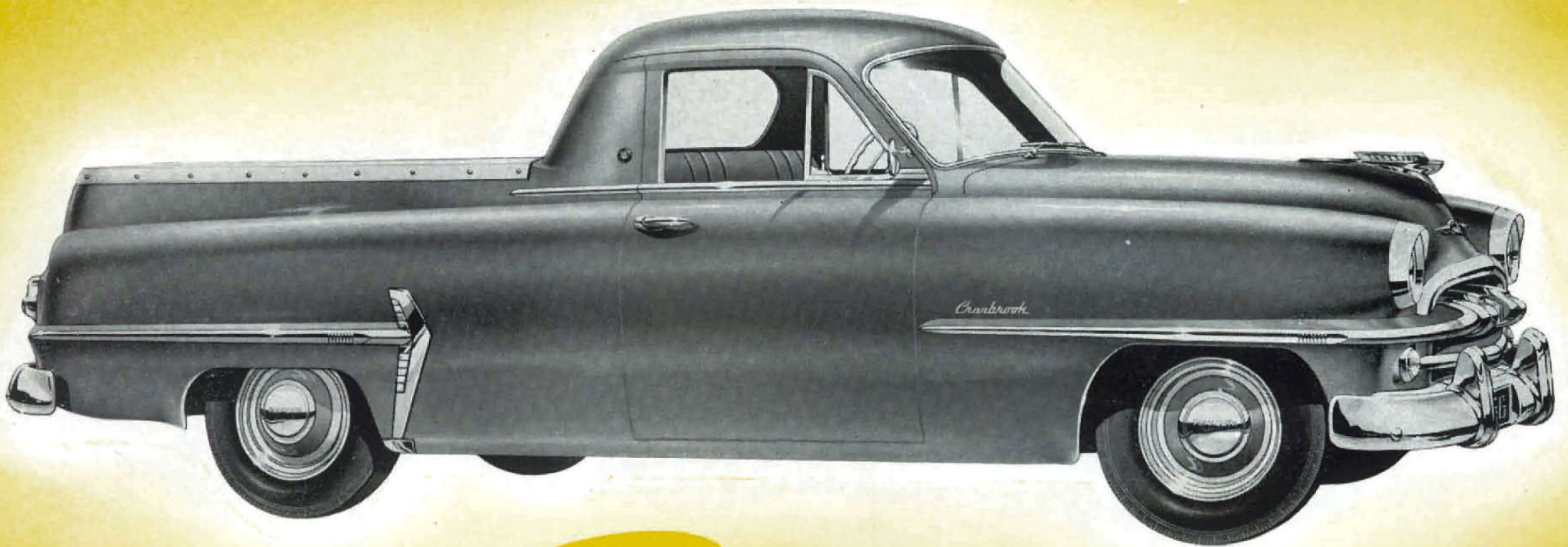
PARTS & SERVICE.—Nationwide availability of MoPar genuine Chrysler parts and skilled service facilities through authorised Distributors and Dealers.

The policy of Chrysler Australia Limited is one of continual improvement in design and manufacture wherever possible to assure a still finer vehicle. Hence, specifications, equipment and prices are subject to change without notice.



CHRYSLER AUSTRALIA LIMITED
Adelaide, South Australia

Finest Workmate—Smartest Playmate **THAT EVER HEADED DOWN A ROAD**



PLYMOUTH

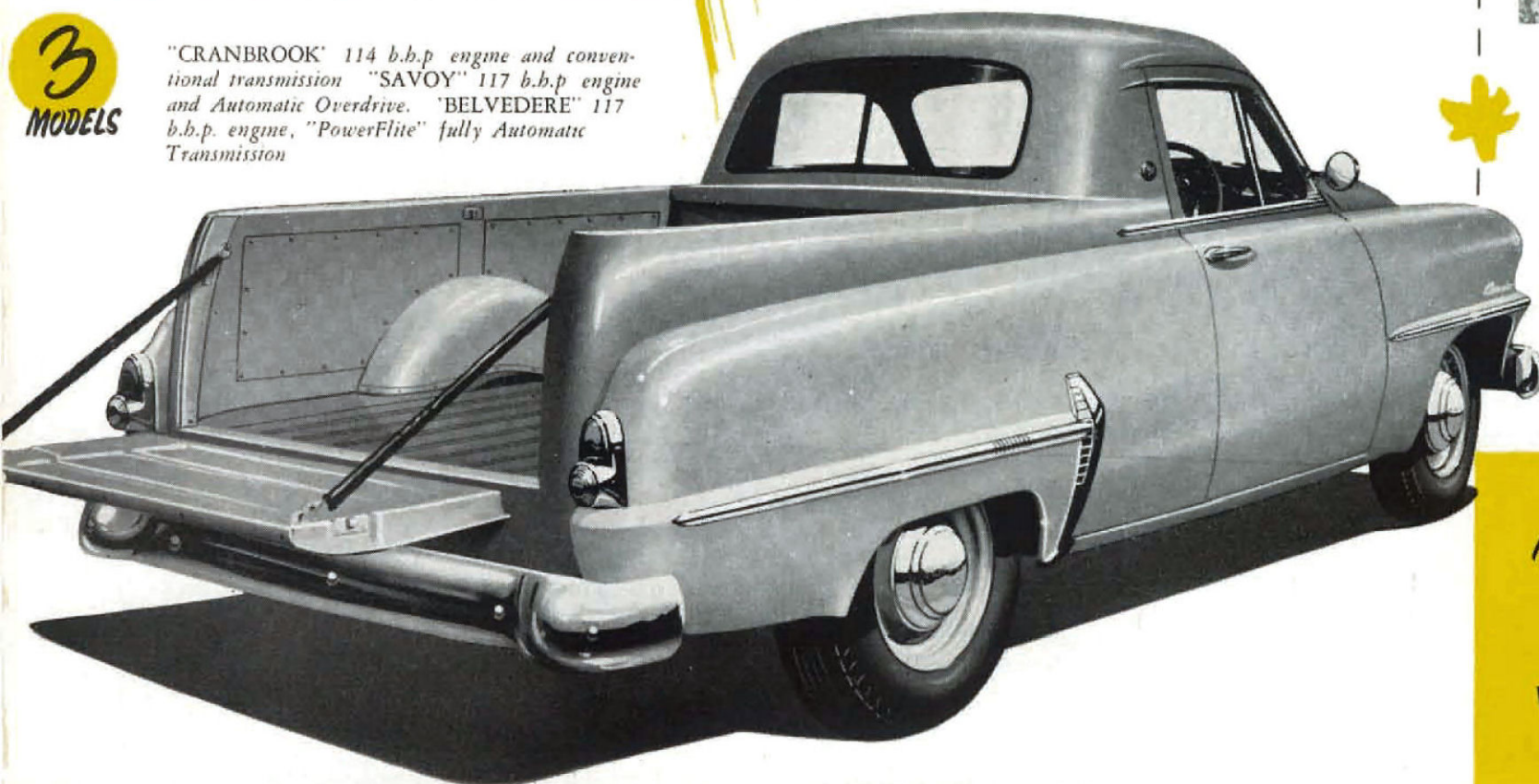
PASSENGER-COUPÉ UTILITY

Here is the smartest of passenger coupes, plus the strength, payload area and capacity you need for real work — combined with

Plymouth's flair for step-ahead styling! Full, sedan front seat comfort and room for three people—smartest colour harmonies—wide panoramic vision—wide opening doors—finest quality upholstery. A step ahead, too, in features that give versatility in load-carrying for city or country work. G.V.W. 4,500 lbs. (10 cwt. capacity) — loading area 57" width (max.) 45½" between wheelarches—loading length 81¾" (max.), 74¼" (min.) — tailgate opening 46". Extra strength chassis frame, rugged X member added to the big, box section side rails. Big tyres 16 x 6.00 x 6 ply—heavy duty wheels with Chrysler exclusive Safety Rims. Heavy duty telescopic shock absorbers—progressive ride rear springs—pendant clutch and brake pedals—38 ft. turning circle—full width, heavy duty rear bumper—utility body of double steel construction—12 volt electrical system.

3
MODELS

"CRANBROOK" 114 b.h.p. engine and conventional transmission "SAVOY" 117 b.h.p. engine and Automatic Overdrive. "BELVEDERE" 117 b.h.p. engine, "PowerFlite" fully Automatic Transmission



FIRST IN THE COUPE UTILITY FIELD TO OFFER THE CHOICE OF . . .

FULL TIME POWER STEERING! Full Time Power Steering does 80 per cent. of the work. Steer with fingertip touch, park with a twist of the wrist. No more fighting the wheel in crosswinds or on rough roads. Perfect command of the road, without effort. Extra safety too!



AUTOMATIC OVER-DRIVE! 6 forward speeds available to meet any driving condition. Saves 30 per cent. in engine speeds for equivalent road speeds. From 10-20 m.p.h. down-shift or upshift without using the clutch and use "second" almost exclusively for get-away.

FULLY AUTOMATIC TRANSMISSION! "POWERFLITE" A velvet flow of uninterrupted power, no jerk, no lag — gears change automatically, silently. Terrific acceleration, smooth, effortless, cruising, better engine braking on down grades, safe uphill starting



Most Versatile
**WORK AND PLEASURE
VEHICLE IN AUSTRALIA**

AHEAD automatically WITH CHRYSLER ENGINEERING "FIRSTS"!