

SERIES

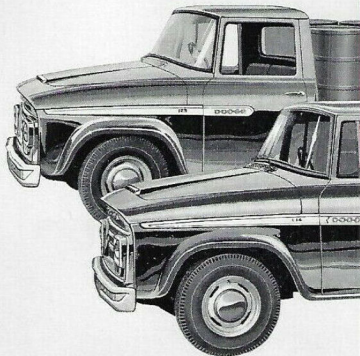
I

MODELS

114
129

NOMINAL PAYLOAD

1 TON



Dependable
Dodge



**Rugged 114" w.b. unit plus
for the light but bulky load**

Three quality-engineered models designed for full, one-ton payloads.

- 114" w.b. with smart rugged, steel Express body.
- 114" w.b. chassis/cab for regular 7'3" bodies.
- 129" w.b. chassis/cab for larger bodies up to 9'.
- Truck engineered in the Dodge tradition.
- High performance—Slant Six engine.
- Smart, functional cab provides driver every energy and time saving feature.
- Latest suspension using long, wide springs with direct, double acting shock absorbers front and rear.

Now! **FINEST EVER**
IN A LONG LINE OF

Dodge
"Job-Rated"
Trucks

TO COMPARE IS TO BUY DEPE



CHRYSLER
AUSTRALIA LTD.

SERIES

I

MODELS
114
129

G.V.W.'s

6,000 lbs



Rugged 114" w.b. unit plus longer 129" w.b. chassis for the light but bulky loads a "ute" won't carry!

Three quality-engineered models designed for full, one-ton payloads.

- 114" w.b. with smart rugged, steel Express body.
- 114" w.b. chassis/cab for regular 7'3" bodies.
- 129" w.b. chassis/cab for larger bodies up to 9'.
- Truck engineered in the Dodge tradition.
- High performance—Slant Six engine.
- Smart, functional cab provides driver every energy and time saving feature.
- Latest suspension using long, wide springs with direct, double acting shock absorbers front and rear.

• Big 200 sq. ins. self energising brakes giving high retardation with low pedal-effort.

• Choice of two synchromesh gearboxes, 3-speed standard, 4-speed optional.

• Heavy duty, 3,800 lbs. capacity rear axle of the "Full-floating" type.

• Extra rugged chassis frame.

114" w.b. STEEL EXPRESS BODY

Has sockets for stakes or canopy. Max. overall floor length 87.5". Max. floor length with tailgate open 108.8". Max. width across floor 64". Max. width between wheel arches 51.7". Inside body height 19.75". Body is built with extra strength for the roughest, toughest use.

30° SLANT "6" ENGINE
"Express" performance with amazing economy



MODERN ALTERNATOR — Exclusive to Dodge—Keeps charging even when engine is idling—Easier cold weather starts. Longer battery life.

Incorporating many exclusive advance design features, the famous Chrysler "Slant 6" engine produces a massive 133 B.H.P. and 204 lbs. ft. torque performance.

Amazing economy and power is achieved by special manifold. Inclining the engine permits long, individual inlet branches giving unrestricted even fuel distribution and produces a "ram-impaction" effect considerably increasing intake efficiency.

Other premium features include latest wedge type cylinder head design—tuned for standard fuel; Large valve areas and exhaust valve rotators. Closed crankcase ventilation system. Cartridge-type full-flow air filter. Crankshaft vibration damper.



COMFORT CAB • Full, bench-type, 3-man seat, adjustable fore and aft, up and down, giving any number of seat positions. • Squab lay-back angle also adjustable. • Long-wearing "breachable" seat trim. • Attractive, serviceable two-tone door trim. • Comfortable, nonsag seating, thick foam over springs. • Instruments can be checked with a flick-of-the-eye. • Instruments include fuel gauge, speedometer, ammeter, temperature gauge, oil pressure gauge. • Turn signal indicators, interior light. • Safety dished steering wheel. • Doors completely weather sealed. • Quick release "Crasheln" hand brake lever. • New, controlled cab ventilation. • Air intake screened and baffled and channelled into cab through two independently controlled ducts. • Pendant clutch and brake pedals. • Turn key starter. • Roomy glove box. • Safety door locks. • Press button door handles. • Dual sun visors. • Large rear view mirror. • Safety glass all round. • 2 speed wipers.

TO COMPARE IS TO BUY DEPENDABLE DODGE SERIES "I"

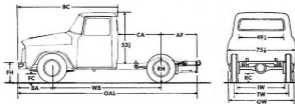
weight ratings

	WITH 3 SPEED TRANSMISSION			WITH 4 SPEED TRANSMISSION		
	114" w.b. Cab & Chassis	114" w.b. Express body	129" w.b.	114" w.b. Cab & Chassis	114" w.b. Express body	129" w.b.
Wheelbases	114"	114"	129"	114"	114"	129"
Gross vehicle weights	6,800 lbs.	6,800 lbs.	6,800 lbs.	6,800 lbs.	6,800 lbs.	6,800 lbs.
Front axle axleload weights	3,175 lbs.	3,233 lbs.	3,233 lbs.	3,175 lbs.	3,240 lbs.	3,270 lbs.
Rear axle axleload weights	3,625 lbs.	3,567 lbs.	3,567 lbs.	3,625 lbs.	3,560 lbs.	3,530 lbs.
Total curb weights	3,200 lbs.	3,280 lbs.	3,253 lbs.	3,248 lbs.	3,268 lbs.	3,440 lbs.
Available for body & payload	3,600 lbs.	3,520 lbs.	3,547 lbs.	3,552 lbs.	3,532 lbs.	3,360 lbs.

chassis dimensions

	MODEL 114	MODEL 129
Wheelbases	114"	129"
Overall length inc. bumpers	307.3"	306.3"
Rack of cab to rear axle	41"	49"
Rear axle to end of frame	38"	44"
Bumper to front axle	35.3"	35.3"
Bumper to back of cab	104.5"	104.3"
Height to top of chassis frame (rear loaded)	34.8"	34.8"
Min. road clearance	8.4"	8.4"
Ground track wheels	63.8"	62.8"
Overall width rear axle	72.2"	72.2"

MODEL 114 Cab and Chassis 7 ft. 3 in. BODY RECOMMENDED. MODEL 129 — 9 ft. BODY RECOMMENDED



standard specifications

FRAME—Pressed steel channel. Model 114, 6.09" x 2.35" x .112". Frame width 34". Model 129, 7" x 3" x .107".

ENGINE—4 cyl. in line O.H.V. inclined 39°. Bore 3.40"; Stroke 4.125"; Displacement 234.3 Cu. In.; Compression ratio 7.1:1; S.A.C. Horsepower 27.7; 3,110 P.M. @ 1,900 r.p.m.; Torque 35.8 lbs. ft. @ 1,200 r.p.m. Low friction lube exhaust valve rotators.

LUBRICATION—Pressure feed to all bearings. Turbo-type oil pump. Full flow replaceable element type oil filter with integral relief valve. Oil filter air cleaner. Spined cast-iron rotating system. Engine oil pan capacity (inc. including filter) 8.3 pints.

COOLING SYSTEM—Fan and tube radiator core. Frontal area 340 sq. in. 7 lb pressure cap. Circulation by water pump with thermostat control. Permanently lubricated water pump bearings. Capacity (inc. reserve) 15 pints.

ELECTRICAL SYSTEM—Electrical supply by 35 amp. alternator, 12 volt, 60 amp. hr. battery. Turn signal lamps front and rear. Four sealed-beam headlights. Frontal parking lights. Dual rear lights.

FUEL SYSTEM—Single stream downward carburetor. Manually operated choke. Oil bath air cleaner. Ceramic type fuel filter in glass bowl. Fuel tank capacity 14 1/2 imp. gals.

CLUTCH—Single plate, dry-type, interlocking spring-centre hub vibration damper. Clutch diameter 10", area 180.5 sq. in.

TRANSMISSION—Sageen. Ratios 1st, 3.01; 2nd 1.76; 3rd, 1; Reverse 2.95. Saged (optional) Ratios 1st, 4.48; 2nd, 2.1; 3rd, 1.48; 4th, 1; Reverse, 9.25.

PROPELLER SHAFT—114—Single shaft with 2 universal joints. 129—2 piece shaft with centre bearing.

AXLE FRONT—Capacity 2,700 lbs.

AXLE REAR—Capacity 3,800 lbs. Full floating type with hypoid drive gear and pin on. Ratio 4.1.

BRAKES, HAND—External master on transmission. Easy release "Orscheln" handbrake lever at right under instrument panel. Handbrake lining area 43.5 sq. in.

BRAKES, SERVICE—Lincobaria 12.12" diam. front wheel brakes; Duo-Tone 12 1/2" diam. rear brakes. Hydraulic assistance. Total lining area 300 sq. in.

SPRINGING—Semi-elliptic front and rear. Double acting shock absorbers front and rear. Spring capacity: Front L.H. 900 lbs.; R.H. 1,200 lbs., to allow for driver and fuel tank. Rear, each 1,600 lbs.

STEERING—Corn and lever. Ratio in gear 10 : 1. Steering wheel 18" safety dished type.

WHEELS—16" x 6.00L—8 stud, with hub caps.

TYRES—7.00 x 16 x 6.

STANDARD EQUIPMENT—Cab and chassis. Front bumper. Spare wheel and tyre. Tool kit and jacks.

OPTIONAL EQUIPMENT—4 speed transmission.

FINISH—Frame, black; Wheel, body colour; Bumper grille and headlamp bezels white.

INSTRUMENTS—Speedometer, oil, temperature and fuel gauges, ammeter.

12 MONTHS OR 100,000 MILES WARRANTY
Genuine Chrysler Parts and Accessories available nationwide.

The policy of Chrysler Australia Limited is one of continual improvement in design and manufacture wherever possible to assure our fleet cars and commercial vehicles. Hence, specifications, equipment and prices are subject to change without notice.



CHRYSLER
AUSTRALIA LTD.