

SERIES
5

MODELS
560-6, 560-8
575-6, 575-8

NOMINAL PAYLOADS
3½, 4, 4½ TONS

DODGE Series 5—Two models, 160" and 175" wheelbases and three an excellent selection for all ¾ to 4½ ton operations—platform, tipper, purpose use. Body lengths to 15 ft. 6 ins. Chassis and cowl models a special bodywork.



JOB-RATED POWER! C

313 CU. IN.

V8



"HIGH TORQUE" V.8 ENGINE

This big 313 cu. in., well proven V-8 develops 182 B.H.P. at 4,400 r.p.m. or can be governed to 178. b.h.p. at 3,900 r.p.m. if required. A high 270 lbs. ft. torque occurs at 2,400 r.p.m. Economy with power is achieved through special attention in design to manifolding, head form, 180° opposing valving and carburetion. Other features are hydraulic tappets, exhaust valve rotators, sealed crankcase ventilation, crankshaft dynamic balancer, tri-metal con-rod bearings. Compression designed for use of standard fuels.

**TO COMPARE IS TO BUY
DEPENDABLE DODGE**

**Dependable
Dodge**



Now! **FINEST EVER
IN A LONG LINE OF**

Dodge
"Job-Rated"
Trucks



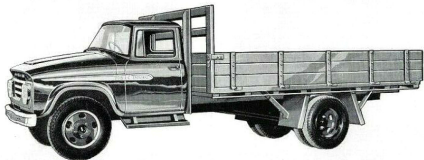
**CHRYSLER
AUSTRALIA LTD.**

SERIES
5

MODELS
560-6, 560-8
575-6, 575-8

G.V.Ws.
14,500 lbs. 15,500 lbs. 16,500 lbs.

DODGE Series 5—Two models, 160" and 175" wheelbases and three G.V.W. ratings provide an excellent selection for all 3½ to 4½ ton operations—platform, tipper, van, farm and general purpose use. Body lengths to 15 ft. 4 ins. Chassis and cowl models available for fitment of special bodywork.



JOB-RATED POWER! Choice of 2 Power Plants

313 CU. IN.
V8



225 CU. IN.
**'HEAVY DUTY'
SLANT "6"**



"HIGH TORQUE" V-8 ENGINE

This big 313 cu. in., well proven V-8 develops 182 B.H.P. at 4,400 r.p.m. or can be governed to 178 b.h.p. at 3,900 r.p.m. if required. A high 270 lbs. ft. torque occurs at 2,400 r.p.m. Economy with power is achieved through special attention in design to manifolding, head form, 180° opposing valving and carburetion. Other features are hydraulic tappets, exhaust valve rotators, sealed crankcase ventilation, crankshaft dynamic balancer, tri-metal con-rod bearings. Compression designed for use of standard fuels.

HEAVY DUTY "SLANT SIX" ENGINE

Has "stelted" exhaust valves and a auto-rotators, heavy-duty roller type timing chain, polyacrylic valve seals, crankshaft dynamic balancer. Engineered to operate on standard fuels, this "Big Slant Six" provides amazing economy while producing 133 B.H.P., 204 lb. ft. torque performance. Slanting the engine has made possible the use of a fuel-saving intake manifold with 6 individual branches and exhaust manifolds with long radius curves. Each cylinder thus gets the same fuel-air mixture and expulsion of burnt gases is fast and complete.



EXCLUSIVE CHRYSLER ALTERNATOR FOR BOTH ENGINES

Provides full charge, even at low engine speeds—Longer battery life. Easier cold weather starting. Particularly desirable for high electric loads such as auxiliary lights, 2-way radios, etc.

**TO COMPARE IS TO BUY
DEPENDABLE DODGE**



TOP STANDARDS IN DRIVER COMFORT AND EFFICIENCY

- Full bench-type, 3-man seat, adjustable fore and aft, up and down
- Squab lay-back angle also adjustable making available any number of seat positions
- Long-wearing "breathable" seat trim
- Attractive, serviceable two-tone door trim
- Comfortable, non-sag seating, thick foam over springs
- Instruments can be checked with a flick-of-the-eye
- Instruments include fuel gauge, ammeter, temperature gauge, oil pressure gauge, speedometer
- Turn signal indicators, interior light
- Safety dish-d steering wheel
- Doors completely weather sealed
- Quick release "Orscheln" hand brake lever
- New, controlled cab ventilation. Air intake screened and baffled and channelled into cab through two independently controlled ducts
- Pendant clutch and brake pedals
- Turn-key starter
- Roomy glove-box
- Safety door locks
- Press button door handles
- Dual sun visors
- Large rear view mirror
- Safety glass all round
- 2 speed windshield wipers.

RUGGED STYLING WITH A PRACTICAL PURPOSE

- Sloping bonnet for steep-angle forward vision
- Wide one-piece engine hood for maximum engine accessibility
- Dual headlights
- Flashing turning lights front and rear
- Panoramic windscreen with narrow corner pillars for maximum visibility
- White grill-bars, bumper and headlamp bezels for night safety.

SMOOTH RIDING ALL WAYS

Springing is long, soft, yet with ample load carrying capacity. Direct, double acting shock absorbers are fitted at front.

ALL AUSTRALIAN SHEET METAL

Chrysler is the only truck manufacturer producing all its sheet metal parts in Australia. Advantages in case of replacement are obvious.

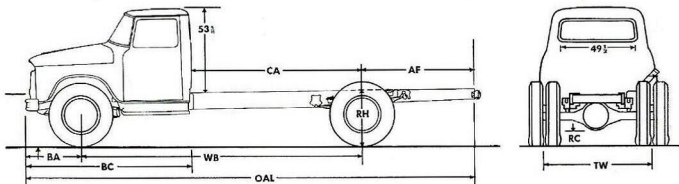
weight ratings

Wheelbases	160"	160"	160"	175"	175"	175"
Gross vehicle weights	14,500 lbs.	15,500 lbs.	16,500 lbs.	14,500 lbs.	15,500 lbs.	16,500 lbs.
Front axle unladen weights (V8)	3,090 lbs.	3,115 lbs.	3,140 lbs.	3,105 lbs.	3,130 lbs.	3,155 lbs.
Rear axle unladen weights (V8)	2,305 lbs.	2,350 lbs.	2,460 lbs.	2,320 lbs.	2,365 lbs.	2,415 lbs.
Total tare weight (V8)	5,395 lbs.	5,465 lbs.	5,640 lbs.	5,425 lbs.	5,495 lbs.	5,570 lbs.
Available for body and payload (V8)	9,105 lbs.	10,035 lbs.	10,960 lbs.	9,075 lbs.	10,005 lbs.	10,930 lbs.
Front axle unladen weights (6)	2,945 lbs.	2,965 lbs.	2,990 lbs.	2,960 lbs.	2,980 lbs.	3,005 lbs.
Rear axle unladen weights (6)	2,285 lbs.	2,330 lbs.	2,380 lbs.	2,300 lbs.	2,345 lbs.	2,395 lbs.
Total tare weight (6)	5,230 lbs.	5,295 lbs.	5,370 lbs.	5,260 lbs.	5,325 lbs.	5,400 lbs.
Available for body and payload (6)	9,270 lbs.	10,205 lbs.	11,130 lbs.	9,240 lbs.	10,175 lbs.	11,100 lbs.

chassis dimensions

	14,500 lbs. G.V.W.		15,500 lbs. G.V.W.		16,500 lbs. G.V.W.	
Wheelbases	(W.B.)	160"	175"	160"	175"	160"
Back of cab to rear axle	(O.A.L.)	265"	280"	265"	280"	265"
Rear axle to end of frame	(C.A.)	91"	106"	91"	106"	91"
Bumper to front axle	(A.F.)	70"	70"	70"	70"	70"
Bumper to back of cab	(B.A.)	34.8"	34.8"	34.8"	34.8"	34.8"
Height to top of chassis—Rear loaded	(B.C.)	103.8"	103.8"	103.8"	103.8"	103.6"
Road clearance (min.)	(R.H.)	31.9"	31.9"	31.9"	31.9"	32.6"
Track—Front wheels	(R.C.)	9.4"	9.4"	9.4"	9.4"	10.1"
Track—Rear wheels	(T.W.)	65"	65"	65"	65"	65"

MAXIMUM BODY LENGTHS:—160" w.b. 14', 175" w.b. 15'6"



standard specifications

ENGINE GENERAL—V-8 O.H.V. Bore 3.875", stroke 3.312". Displacement 313 cu. ins. Compression ratio 7.25:1. R.A.C. horsepower 48.0. B.H.P. 182/4,400 r.p.m. Torque 270 lbs. ft. @ 2,400 r.p.m.

ENGINE GENERAL—"SLANT SIX"—O.H.V. Bore 3.40". Stroke 4.125". Displacement 224.7 cu. ins. Compression ratio 7.2:1. R.A.C. horsepower 27.7. B.H.P. 133 @ 3,900 r.p.m. Torque 204 lbs. ft. @ 1,600 r.p.m.

LUBRICATION, V-8 & "SLANT SIX"—Pressure feed to all bearings by rotary-type pump. Sealed crankcase ventilating system and oil filler air cleaner. Full flow replaceable element type oil filter. Crankcase capacity (less filter) 8.3 pints (V-8 and 6).

COOLING SYSTEMS, V-8 & "SLANT SIX"—Fin and tube type radiator, frontal area 384.5 sq. ins. Circulation by water pump with thermostat control. Total cooling system capacity—"Slant Six" 25 pints, V-8 33 pints.

ELECTRICAL SYSTEMS—V-8 & "SLANT SIX"—Electrical supply by 35 amp Alternator, 12 volts, 60 amp battery. Turn signal lamps front and rear. Four sealed beam headlamps. Front parking lights.

FUEL SYSTEMS—"SLANT SIX"—Single throat downdraft carburetor with hand throttle and choke controls. Pumper element fuel line filter. Oil bath air cleaner. O.H.V. V-8 Dual downdraft carburetor with hand throttle and choke controls. Pumper element fuel line filter. Oil bath air cleaner. Fuel tank capacity 18 gallons.

CLUTCH—Single plate, dry disc incorporating spring-centre hub vibration damper. Clutch diameter 11", area 124 sq. ins.

TRANSMISSION—4 speed synchromesh. Ratios: 1st 6.68; 2nd 3.10; 3rd 1.69; 4th 1.00; Reverse 8.25. P.T.O. on right hand side.

FRAME—Pressed steel channel. Dimensions 8.56" x 3.02" x .250". Frame width S.A.E. standard.

PROPELLER SHAFT—Two piece shaft with centre bearing.

AXLE FRONT—Capacity 5,500 lbs.

AXLE REAR—Ratio 6.2:1. Capacity 13,000 lbs. Full floating type, hypoid drive gear and pinion. Four pinion differential. Straddle mounted pinion

BRAKES, HAND—External contracting on transmission. Quick release "Orschell" handbrake lever under R.H. side instrument panel. Handbrake lining area 67.5 sq. ins.

BRAKES, SERVICE—Type-hydraulic. Front brakes, 14.12" dia., two piston single cylinder. Rear 15" dia. two cylinder floating shoe. Vacuum booster. Total lining area 368.3 sq. ins.

SPRINGING—Semi-elliptic. Spring capacities: Front each 1,750 lbs. Rear, each 5,700 lbs. (inc. auxiliary). Wrapped fixed eye front springs. Double acting shock absorbers at front.

STEERING—Worm and 3 tooth roller. Ratio of gear 22.4:1. 18" safety dished steering wheel. Turning circle 160" w.b., 59", 175" w.b., 63".

WHEELS—20 x 6.00—5 stud.

TYRES—7.50 x 20 x 8 for 14,500 lbs. G.V.W. units; 7.50 x 20 x 10 for 15,500 lbs. G.V.W. units; 8.25 x 20 x 10 for 16,500 lbs. G.V.W. units.

STANDARD EQUIPMENT—Cab and chassis. Front bumper. Spare wheel, Tool Kit and Jack. External steps.

OPTIONAL EQUIPMENT—Spare tyre and tube. For 16,500 lbs. G.V.W. model—8.25 x 20 x 10 Road lug tyre. Engine governor.

FINISH—Frams, external steps and wheels black. Bumper, grille and headlamp bezels, white.

INSTRUMENTS—Speedometer, oil, temperature and fuel gauges, ammeter.

12 MONTHS OR
10,000 MILES WARRANTY
Genuine Chrysler Major
Parts and Accessories
available nationwide

The policy of Chrysler Australia Limited is one of continuous improvement in design and manufacture wherever possible to assure still finer cars and commercial vehicles. Hence, specifications, equipment and prices are subject to change without notice.



CHRYSLER
AUSTRALIA LTD.