

V8 PERFORMANCE AND VALUE THAT PUT YOU AHEAD

-HANDSOMELY!

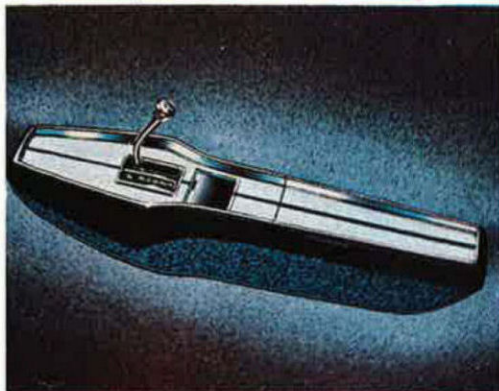


Valiant 273 V8

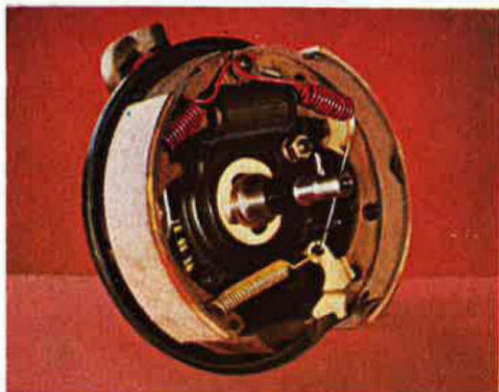
SPECTACULAR BLEND OF OUTSTANDING PERFORMANCE WITH LIMOUSINE LUXURY



ROOM FOR LOTS OF LUGGAGE Luggage boot is fully lined, carpeted has a courtesy light. Boot is high, wide and deep with the outstanding capacity of 26½ cu. ft. In Safari V8, the maximum loadspace is obtained by the easy, one-step fold-down of the rear seat. Result—over 8 ft. 9 in. of length from front seat back to tailgate lowered, maximum 4 ft. 4½ in. floor width.



OUTSTANDING AUTOMATIC TRANSMISSION The 3-speed Torque-Flite is specially engineered for the V8 power. A new sliding spline at the transmission output shaft adds further to vibrationless operation. Gear selection is made with a short, sports-type lever on a floor console. New console has a push-button on the selector knob which is pressed when moving the lever and gives easier, more positive operation. Console includes an ash receiver and has a compartment in which you can store small articles.

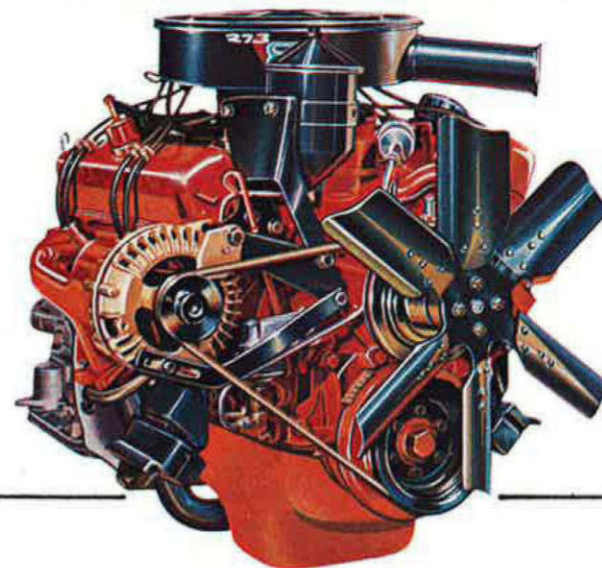


BIG MARGIN IN SAFETY Valiant V8 has big brakes which are power assisted. In addition, there are other envied Valiant safety features; Torsion-bar front suspension for smoothness and stability, double-sided Safety-Rim wheels, wide front and rear tracks. The V8 reserve power is also a safety feature in itself.



LIMOUSINE STYLED ROOF The vinyl covering the steel roof of Valiant V8 is of special exterior quality. It is amazingly durable even under the most adverse conditions and has been thoroughly tested and proven. The Valiant V8 body finish is the most advanced in automotive paint technology—acrylic enamel that has remarkable depth of color and lasting qualities.

MOST ADVANCED V8 POWER UNIT The Valiant V8 is of a specially developed design that is compact, has a low profile and carries no unnecessary weight. To achieve the latter, revolutionary new foundry and core-making techniques were evolved. As a result, the distinctive Valiant "balance", ride and handling ease are retained. Engine has a capacity of 273 cu. ins., compression ratio of 8.8:1, develops 180 B.H.P. at the relatively low engine speed of 4,200 r.p.m. High torque development, 260 lb. ft. is obtained at only 1,600 r.p.m.



SPEAKING TECHNICALLY

DIMENSIONS. Wheelbase 106"; Max. overall length—Sedan 188.25", Safari 188.98"; Track—front 55.9", rear 55.6".

ENGINE. 90° V8; Bore 3.63"; Stroke 3.31"; Displacement 273 cu. in.; Comp. ratio 8.8:1; Max. B.H.P. at r.p.m. 180 4,200; Max. torque at r.p.m., 260 lb. ft. at 1,600.

ENGINE (General). Cylinder heads have wedge-shaped combustion chambers with spark plugs placed at highest point within domes. Valves arranged in-line, actuated by rocker arms, mounted on single rocker arm shafts. Rocker arms interchangeable for either intake or exhaust valves. Pistons of cam-ground aluminium alloy have flat heads, two steel inserts cast into each piston skirt; expansion is at the same rate as cylinder bore. Pistons have 2 compression rings plus a three-piece oil ring with 2 chrome plated steel rails separated by an expanding spacer. This gives excellent oil control. Two-barrel carburettor. Crankshaft has 5 bearings. Cooling system cap. 28 pints. Fan 6-blade, 18 in. dia. Alternator 35 amp.

BRAKES. Duo-servo, self-adjusting, hydraulic. Power brakes standard.

SUSPENSION. Front—Independent, lateral—non-parallel control arms with torsion bars. Rear—Longitudinal leaf springs of increased capacity.

TORQUEFLITE "8" AUTOMATIC TRANSMISSION. Specially engineered for V8 performance while retaining the

inherent characteristics of smoothness, silence and fast change. Transmission oil water-cooled with own oil filter. Gear selector lever, floor console mounted. (Sedan only). Gear ratios are—

"R" Reverse gear—2.2 to 1 ratio.

"N" Neutral.

"D" 1st and 2nd and Drive—2.45, 1.45, 1.00 to 1.

"2" 1st and 2nd—2.45, 1.45 to 1.

"1" 1st—2.45 to 1.

WHEELS AND TYRES. Wheels—steel disc, double-sided Safety Rims. Tyres (both sedan and Safari)—6.95 x 14 x 4 extra low profile, white wall. Wheel trim rings standard.

CAPACITIES. Cooling system 28 pt.; Fuel tank 14.3 gall. Crankcase capacity with oil filter, 8.3 pt. Transmission 13.3 pt. Rear axle 2.2 pt.

WARRANTY.—12 months or 12,000 miles.

EQUIPMENT. Heater/demister; Windscreen washers; Prismatic interior rear-view mirror; Carpeted kick pads; Arm rests all doors; Courtesy switches all doors; Luggage compartment light (sedan only); Roof rack (Safari V8 only); 2-speed windscreen wipers; Cigar lighter; 2 Sun visors (passenger visor with vanity mirror); Coat hooks; Seat belt anchorage points; Rear Seat centre arm rest (sedan); Front seat centre arm rest (Safari); Wheel trim rings; Dual horns; Carpeted luggage boot (sedan); Power Brakes; Reversing lights; Air deflectors (Safari); White wall tyres; Vinyl-covered roof (Sedan).



CHRYSLER
AUSTRALIA LTD.

V8 PERFORMANCE AND VALUE THAT PUT YOU AHEAD

-HANDSOMELY!

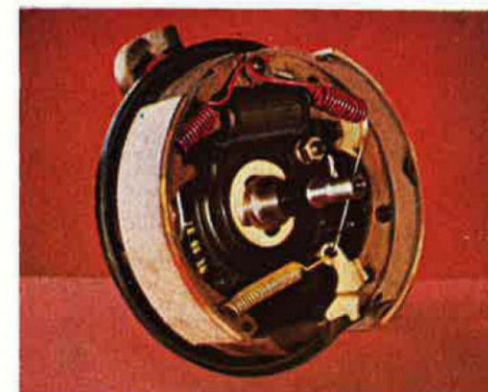
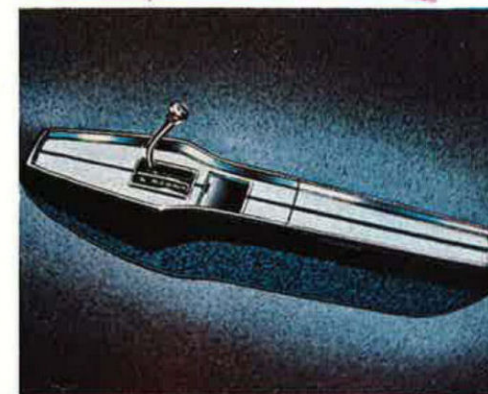


ROOM FOR LOTS OF LUGGAGE Luggage boot is fully lined, carpeted has a courtesy light. Boot is high, wide and deep with the outstanding capacity of 26½ cu. ft. In Safari V8, the maximum loadspace is obtained by the easy, one-step fold-down of the rear seat. Result—over 8 ft. 9 in. of length from front seat back to tailgate lowered, maximum 4 ft. 4½ in. floor width.

OUTSTANDING AUTOMATIC TRANSMISSION The 3-speed Torque-Flite is specially engineered for the V8 power. A new sliding spline at the transmission output shaft adds further to vibrationless operation. Gear selection is made with a short, sports-type lever on a floor console. New console has a push-button on the selector knob which is pressed when moving the lever and gives easier, more positive operation. Console includes an ash receiver and has a compartment in which you can store small articles.

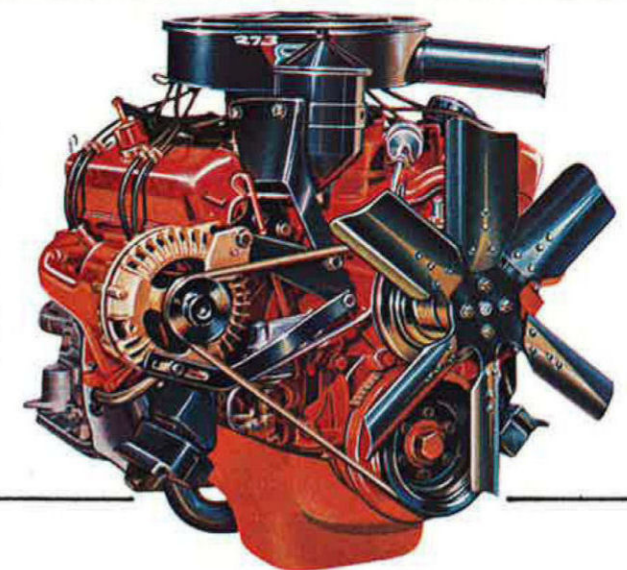
BIG MARGIN IN SAFETY Valiant V8 has big brakes which are power assisted. In addition, there are other envied Valiant safety features: Torsion-bar front suspension for smoothness and stability, double-sided Safety-Rim wheels, wide front and rear tracks. The V8 reserve power is also a safety feature in itself.

LIMOUSINE STYLED ROOF The vinyl covering the steel roof of Valiant V8 is of special exterior quality. It is amazingly durable even under the most adverse conditions and has been thoroughly tested and proven. The Valiant V8 body finish is the most advanced in automotive paint technology—acrylic enamel that has remarkable depth of color and lasting qualities.



AP7-V8-25

MOST ADVANCED V8 POWER UNIT The Valiant V8 is of a specially developed design that is compact, has a low profile and carries no unnecessary weight. To achieve the latter, revolutionary new foundry and core-making techniques were evolved. As a result, the distinctive Valiant "balance", ride and handling ease are retained. Engine has a capacity of 273 cu. ins., compression ratio of 8.8:1, develops 180 B.H.P. at the relatively low engine speed of 4,200 r.p.m. High torque development, 260 lb. ft. is obtained at only 1,600 r.p.m.



SPEAKING TECHNICALLY

DIMENSIONS. Wheelbase 106"; Max. overall length—Sedan 188.25", Safari 188.98"; Track—front 55.9", rear 55.6".

ENGINE. 90° V8; Bore 3.63"; Stroke 3.31"; Displacement 273 cu. in.; Comp. ratio 8.8:1; Max. B.H.P. at r.p.m. 180 4,200; Max. torque at r.p.m., 260 lb. ft. at 1,600.

ENGINE (General). Cylinder heads have wedge-shaped combustion chambers with spark plugs placed at highest point within domes. Valves arranged in-line, actuated by rocker arms, mounted on single rocker arm shafts. Rocker arms interchangeable for either intake or exhaust valves. Pistons of cam-ground aluminium alloy have flat heads, two steel inserts cast into each piston skirt; expansion is at the same rate as cylinder bore. Pistons have 2 compression rings plus a three-piece oil ring with 2 chrome plated steel rails separated by an expanding spacer. This gives excellent oil control. Two-barrel carburettor. Crankshaft has 5 bearings. Cooling system cap. 28 pints. Fan 6-blade, 18 in. dia. Alternator 35 amp.

BRAKES. Duo-servo, self-adjusting, hydraulic. Power brakes standard.

SUSPENSION. Front—Independent, lateral—non-parallel control arms with torsion bars. Rear—Longitudinal leaf springs of increased capacity.

TORQUEFLITE "8" AUTOMATIC TRANSMISSION. Specially engineered for V8 performance while retaining the

inherent characteristics of smoothness, silence and fast change. Transmission oil water-cooled with own oil filter. Gear selector lever, floor console mounted. (Sedan only). Gear ratios are—
"R" Reverse gear—2.2 to 1 ratio.
"N" Neutral.
"D" 1st and 2nd and Drive—2.45, 1.45, 1.00 to 1.
"2" 1st and 2nd—2.45, 1.45 to 1.
"1" 1st—2.45 to 1.

WHEELS AND TYRES. Wheels—steel disc, double-sided Safety Rims. Tyres (both sedan and Safari)—6.95 x 14 x 4 extra low profile, white wall. Wheel trim rings standard.

CAPACITIES. Cooling system 28 pt.; Fuel tank 14.3 gal. Crankcase capacity with oil filter, 8.3 pt. Transmission 13.3 pt. Rear axle 2.2 pt.

WARRANTY.—12 months or 12,000 miles.

EQUIPMENT. Heater/demister; Windscreen washers; Prismatic interior rear-view mirror; Carpeted kick pads; Arm rests all doors; Courtesy switches all doors; Luggage compartment light (sedan only); Roof rack (Safari V8 only); 2-speed windscreen wipers; Cigar lighter; 2 Sun visors (passenger visor with vanity mirror); Coat hooks; Seat belt anchorage points; Rear Seat centre arm rest (sedan); Front seat centre arm rest (Safari); Wheel trim rings; Dual horns; Carpeted luggage boot (sedan); Power Brakes; Reversing lights; Air deflectors (Safari); White wall tyres; Vinyl-covered roof (Sedan).



**CHRYSLER
AUSTRALIA LTD.**

Valiant 273 V8

SPECTACULAR BLEND OF OUTSTANDING PERFORMANCE WITH LIMOUSINE LUXURY

★★★★ Valiant 273 v8

As the top performing Valiant, and the most luxurious, the 273 V8 has much to offer those who like their motoring action-packed. More conservative drivers get equal enjoyment from owning this fine car. Even in sedate suburban driving, there is still the supreme satisfaction of complete command of a spirited, and superb machine. If you are a good horseman and have mastered a thoroughbred you'll know exactly what Valiant V8 does for motoring.

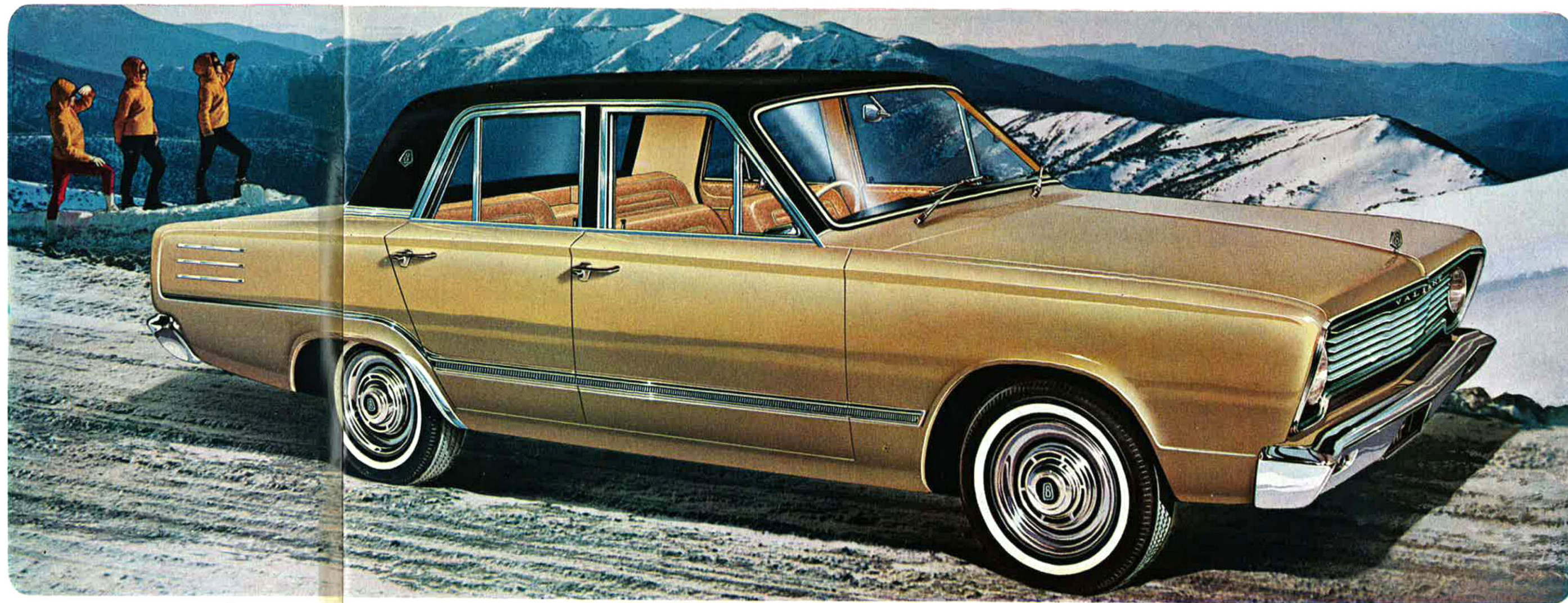
The floor console gearshift selector also adds a zest to driving. Firstly, it is a "set-it-and-forget-it" 3-speed automatic. Alternatively, you can take over manual control for changes from 1st and 2nd to Drive (D). Brilliant performance is matched by outstanding safety. Big, power-assisted brakes, plus torsion bar front suspension.

The 273 V8 has the clean-cut symmetrical Valiant lines with subtle marking to denote the V8 model. In addition, the vinyl covered roof creates an individual styling note. White wall tyres are fitted, plus de luxe wheeltrim rings.

Inside is the look and feel of luxury. Individual front seats, contoured, bolstered, thickly foam-padded. Front seats are separately adjustable. Rear seat has folding centre arm rest (2 or 3 passengers). Upholstery is luxurious sponge vinyl. Doors and centre pillars fully trimmed. Carpets are lush, even the bottoms of the doors and luggage boot floor are carpeted.

Equipment includes heater with push-pull controls for temperature and air flow, demister, windscreen washers, Prismatic interior rear-view mirror, courtesy lights all doors, cigar lighter, vanity mirror, arm rest all doors, coat hooks, ashtrays on instrument panel, in the floor console and on each front seat back.

Overall, the Valiant 273 is more than added luxury and a V8 engine. In every detail, transmission, springing, heavy-duty rear axle, cooling and exhaust systems, it has been engineered completely to meet the higher levels of performance and provide added safety.



V8 performance -WITH SAFETY THAT LETS YOU ENJOY IT



SAFARI V8 STATION WAGON. Safari V8 has all the mechanical features of the V8 sedan. However, as most station wagon owners need maximum passenger-carrying capacity, the automatic gearshift selector is by quadrant and lever on the steering column, which allows the use of a full width front seat, with folding centre arm rest. Safari V8 has, as standard equipment, a very handsome and practical roof rack. The roominess of the Safari V8 (two big adults can sleep in it comfortably), the combination of its V8 power and TorqueFlite 3-speed automatic transmission which provides the ultimate for trailing a boat or a caravan make this the ideal vehicle for fun-loving, outdoor people.

