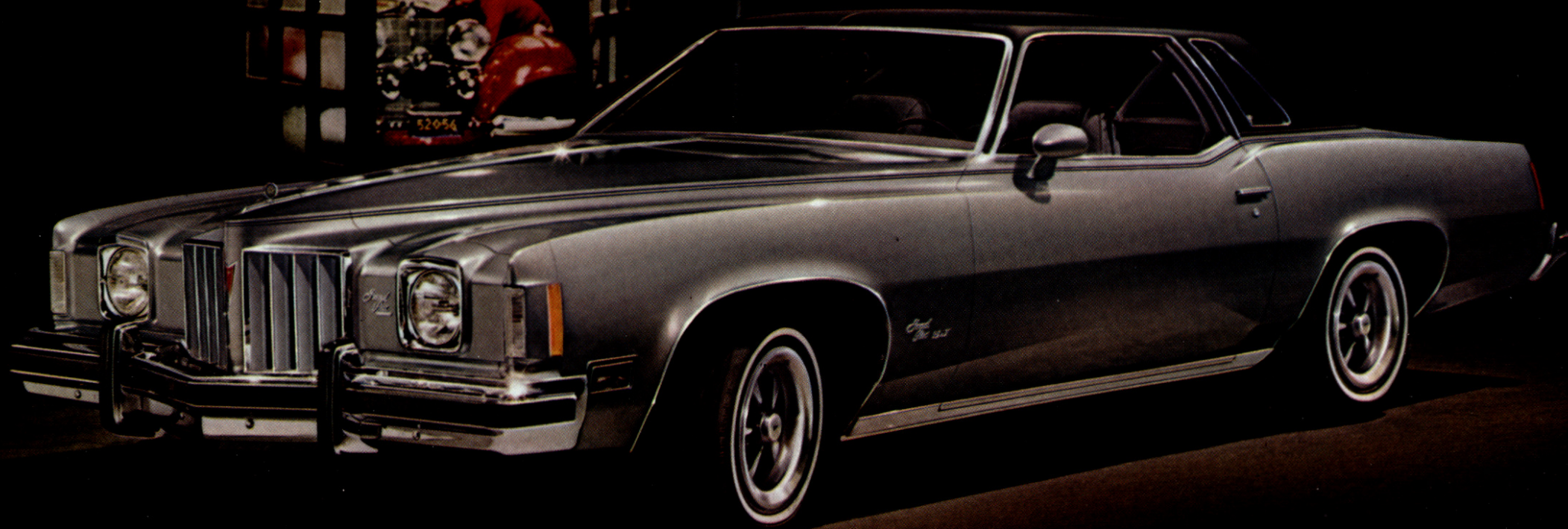


**1975 Grand Prix**  
Pontiac's classic personal car.





Grand Prix Hardtop Coupe.



As if Grand Prix weren't luxurious enough, this is Grand Prix LJ. The velour upholstery is available in black or burgundy.



We hesitate to call this handsome interior standard. But it is. All-Morrokide upholstery available in black, white, burgundy, saddle, blue or green.

If Pontiac built only one car in 1975, it would be a Grand Prix. Because G.P. combines what we know about styling, ride, performance and comfort in one classic road car.

In a world of galloping similarity, Grand Prix has a look all its own. Not because of the new grille. Or the new hood ornament. Or even the two-tone paint on our super luxurious new LJ version.

It's the totality that makes Grand Prix styling unique.

And it's a totality that gives the '75 Grand Prix its own kind of moves. Variable-ratio power steering. Power front disc brakes. Turbo Hydra-matic. A 400-cu.-in. V-8.

Plus a brand-new Maximum Mileage System to improve mileage, lower operating costs. It includes steel-belted radial tires,

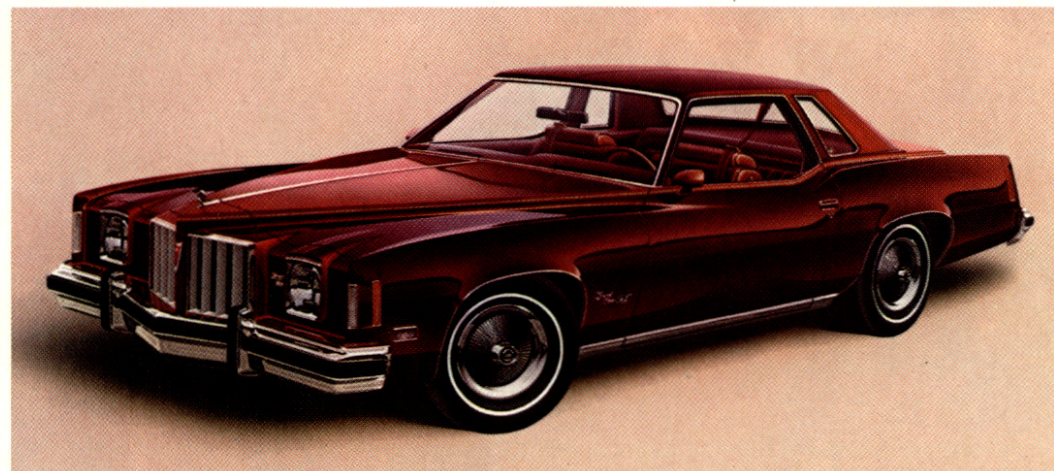
improved torque converter, High Energy Electronic Ignition and a catalytic converter.

Our Grand Prix SJ has a few moves of its own. Among other things, a 455 V-8, stripes, Rally II wheels, wider GR70-15 radials and a rally gauge cluster are standard.

If trifles were ever tremendous, the '75 Grand Prix's are. Items like a new speedometer that reads kilometres per hour, as well as miles per hour. A headlamp dimmer switch in the turn signal lever. And a new reclining passenger bucket seat you can order.

Perhaps insignificant individually. But together they make up a cockpit that's personal and driver oriented.

That's why Grand Prix's the most distinctive car we build... certainly one of the most distinctive you can buy.



Introducing Grand Prix LJ. With special two-tone paint, body colored remote-controlled mirrors (r.h. mirror with bucket seats only), Cordova top, stripes, custom finned wheel covers, cornering lamps, front and rear bumper guards, velour seat trim, deluxe carpeting, power door locks, power windows, door courtesy lamps, door pull straps, dome reading lamp, visor vanity mirrors, spare tire cover, velour trunk trim, added acoustical insulation, litter container and plenty of I.D.

## GRAND PRIX FACTS AND FIGURES

### MODEL

2-Door Hardtop Coupe

### POWER TRAINS

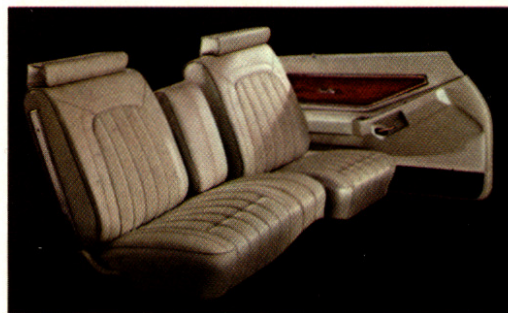
Standard engine: 400-cu.-in. 4-bbl. V-8.  
Available engines: 400-cu.-in. 2-bbl. V-8,\*  
455-cu.-in. 4-bbl. V-8.  
Standard transmission: Turbo Hydra-matic.  
\*Not available in California

### STANDARD INTERIOR FEATURES

Deep-contour front bucket seats or notch-back seat with cloth and vinyl or all-vinyl trim. All-foam construction front and rear seats. Nylon-blend, cut-pile carpeting with carpeted lower door panels. Console with floor shift (bucket seats only). Custom cushion steering wheel. High-low ventilation. Electric clock. Instrument panel, console and door appliques with the look of crossfire mahogany. Acoustical insulation. Easy-to-service instrument panel with plug-in components. Ash tray, glove box and instrument panel courtesy lamps. Custom pedal trim plates. Trunk compartment lamp and side panels. Instrument panel, console, steering wheel and column all color-coordinated to interior.

### STANDARD EXTERIOR FEATURES

Restyled deluxe wheel covers. Stand-up hood ornament. Wide rocker panel moldings. Formal roof line with monogrammed rear quarter windows. Long doors for easy rear seat entry. Windshield radio antenna. Concealed wipers. Body colored door handle inserts. Bright moldings on windshield, quarter window, rear window, windowsill, hood and wheel openings. Bright drip moldings on roof. Rear bumper guards. Protective rubber strips on bumpers. Front and rear bumper systems using energy absorbers.



Either a sofa or two armchairs. It's the 60/40 seat you can order in your Grand Prix.

## STANDARD CHASSIS FEATURES

Variable-ratio power steering. Power brakes (front discs, rear drums). Radial Tuned Suspension including: GR78-15 GM specification steel-belted radial tires, front and rear stabilizer bars, firm shocks, 4-wheel computer-selected coil springs and more. Perimeter frame. Power-Flex fan. Pontiac's Maximum Mileage System requires unleaded fuel and includes: High Energy Electronic Ignition, catalytic converter, improved torque converter and GR78-15 GM specification steel-belted radial tires. (We call it our Maximum Mileage System because it represents the most advanced engineering and technology Pontiac can offer on 1975 model cars.)

### DIMENSIONS (inches)

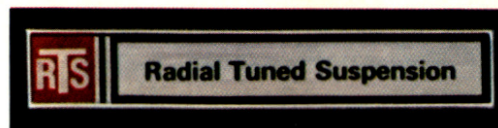
Overall length	212.7
Overall width	77.8
Wheelbase	116.0
Track, front/rear	61.6/61.1
Head room, front/rear	37.5/37.4
Leg room, front/rear	42.5/33.5
Shoulder room, front/rear	58.8/58.1
Hip room, front/rear	54.9/52.7

### CAPACITIES

Fuel tank—25 gals.  
Cooling system—21.6 qts.  
Oil, less filter refill—5.0 qts.

### POPULAR EQUIPMENT AVAILABLE

Full or Landau-style Cordova top. Sunroof. Rally gauge instrument cluster with tachometer. Reclining passenger bucket seat AM/FM stereo radio. Automatic temperature control air conditioning. Honeycomb or Rally II wheels. SJ Option, which includes: 455 V-8, GR70-15 steel-belted radial tires, Rally II wheels, body colored outside mirrors, pinstriping and a rally gauge instrument cluster. LJ Option, which includes: special two-tone paint, Cordova vinyl top, pinstriping, custom finned wheel covers, cornering lamps, front bumper guards, velour seat trim, deluxe carpeting, power door locks, power windows, door courtesy lamps, door pull straps, dome reading lamp, visor vanity mirrors, spare tire cover, black velour trunk trim, added acoustical insulation, body colored, remote-controlled mirrors and shroud side litter container.



Radial Tuned Suspension with steel-belted radial tires. The heart of Grand Prix's way with the road.



You find that handsome mahogany woodgrain vinyl trim on the doors and center console, too.



The new hood ornament isn't very big. Just big enough to let people know you're no ordinary driver.

## GRAND PRIX SAFETY FEATURES

### Occupant Protection

Seat belts with pushbutton buckles for all passenger positions. Two front combination seat and shoulder belts for driver and right front passenger (with reminder light and buzzer, inertia reel and starter interlock). Two front-seat head restraints. Energy-absorbing steering column. Passenger-guard door locks. Safety door latches and hinges. Folding seat-back latches. Energy-absorbing padded instrument panel and front seat-back tops. Contoured windshield header. Thick laminate windshield. Padded sun visors. Safety armrests. Safety steering wheel. Cargo-Guard. Side-Guard beams. Contoured roof inner panel.

### Accident Prevention

Side marker lights and reflectors (front side marker lights flash with directional signal). Parking lamps that illuminate with headlamps. Four-way hazard warning flasher. Backup lights. Lane-change feature in direction signal control. Windshield defrosters, washers and dual-speed wipers. Wide-view inside day/night mirror (vinyl edged, shatter-resistant glass and deflecting support). Outside rearview mirror. Dual master cylinder brake system with warning light. Starter Safety Switch. Dual-action safety hood latches.

### Anti-Theft

Anti-theft ignition key reminder buzzer. Anti-theft steering column lock. Inside hood latch release.

Shown on the cars and described in this catalog are some of the many options and accessories offered by Pontiac. They're available at extra cost, and well worth it in driving comfort and convenience. Pontiac Motor Division of General Motors Corporation reserves the right to make changes at any time, without notice, in colors, equipment, specifications, prices and models—and also to discontinue models. The right is also reserved to change any specifications, parts or equipment at any time without incurring any obligation to equip same on cars built prior to date of such change.

Pontiac Motor Division, General Motors Corporation, One Pontiac Plaza, Pontiac, Michigan 48053.

Litho in U.S.A.

