

GMC



TRUCKS FOR '81



WIDESIDE, SIERRA CLASSIC Handsome, strong 2-WD or 4-WD Pickups available in 1500-3500 series with an 8' box; and in C/K-1500 with a 6½' box. GVWRs range from 4,900 to 10,000 lbs. A C-1500 Diesel Wideside model features a V8 diesel. Ask for a Pickup catalog for details.

GMC QUALITY TRUCKS

PICKUP, JIMMY AND SUBURBAN . . . NEW LOOK FOR '81! Looks new . . . feels new . . . weighs less . . . looks great . . . offers impressive performance with the optional new 5.0 Liter V8 gasoline engine because of its high 9.2 to 1 compression ratio and new Electronic Spark Control (ESC) to help control engine knock (not available in California) . . . and a new 4-WD system on K-1500 and K-2500 models. . . that's GMC for '81! It's value.

Here's what was done. The front-end sheet metal was redesigned for reduced weight and new appearance with aerodynamic styling. New-style front end includes single rectangular lamps for standard, dual rectangular lamps for available Deluxe Front Appearance Package. Parking lamps are newly located in the front bumper and an air dam is attached to the front bumper. And there is more. Ask your GMC dealer for a catalog.

A WORD ABOUT THIS CATALOG

We have tried to make this catalog as comprehensive and factual as possible and we hope you find it helpful. However, since the time of printing, some of the information you will find here may have been updated. Also, some of the equipment shown or described throughout this catalog is available at extra cost. Your dealer has details and, before ordering, you should ask him to bring you up to date.

Information regarding available options and components is available from your GMC dealer.

The right is reserved to make changes at any time, without notice, in prices, colors, materials, equipment, specifications and models. Check with your GMC dealer for complete information.



WIDESIDE, HIGH SIERRA High style High Sierra Wideside Pickup is available in all series with an 8' box; and in 2-WD and 4-WD 1500 series with a 6½' box. A C-1500 Diesel powered model features a V8 Diesel. See your GMC dealer for a catalog.

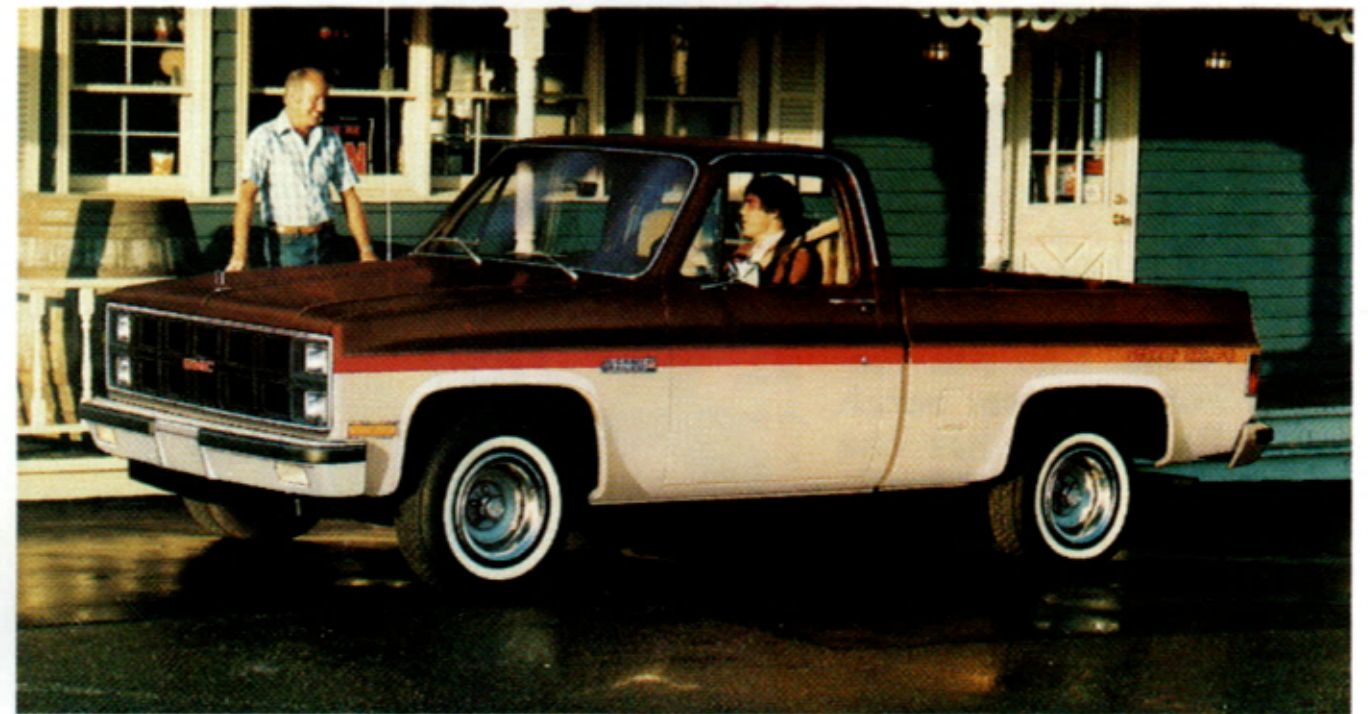


FENDERSIDE, HIGH SIERRA

Sporty and practical! Fenderside is available in all trim levels. It is easily loaded from tailgate or handy step behind the cab. 4-WD is available for K-1500/2500 models. There is a Fenderside 5.7 Liter V8 Diesel model. Ask for a Pickup catalog.

WIDESIDE, SIERRA

Sierra is GMC's value Pickup featuring the 4.1 Liter (250) in-line six engine as standard in C-1500 and some C-2500 models. Ask your GMC dealer for more details and get a Pickup catalog.



STREET COUPE

Street Coupe is an available trim package for Sierra Grande Wideside and Fenderside Pickups with a 6½' box. The package includes a special paint scheme and many accessories. Ask your GMC dealer for details and a Pickup catalog.



4-WD PICKUP

When your job or sport takes you off the beaten path, get there and back in a track-making GMC 4-WD. One-half- and 3/4-ton Wideside and Fenderside and 1-ton Wideside are offered. 4-WD is also available in Cab & Chassis models. Ask for a Pickup catalog.

BONUS AND CREW CAB WIDESIDE PICKUPS

Four-door Wideside Pickups for carrying extra people or cargo. Crew Cab has full-width front and rear bench seats. Bonus Cab has one bench seat plus 56 cu. ft. of lockable stowage area. 4-WD and/or dual rear wheels are available on 1-ton models. Ask for a Pickup catalog.



SUBURBAN

The do-it-all wagon—available seating for up to 9 passengers—up to 144 cu. ft. of cargo space with seats removed—9,000-lb.* trailer-towing muscle with available equipment. Ask your GMC dealer for a Suburban catalog.

*Higher capacity hitches are available from outside sources.



RALLY STX

The people-lovin'/movin' vans from GMC! The G-3500 long wheelbase model carries up to 12 adults comfortably with available seating. There's a new available rear bench seat that unfolds into a bed. Rally STX is great for trailering, too. See your GMC dealer. Ask for a Rally catalog.



JIMMY

Widen your horizons with 4-WD or 2-WD GMC Jimmy. In '81 automatic locking front hubs are standard on 4-WD models, and to aid off-road handling there's a new available Front Quad Shock Package. Ask for a Jimmy catalog.



CABALLERO

Caballero, Amarillo, or Diablo—three Pickups that look like a sporty car. '81 Caballero engines are equipped with a new Computer Command Control system that helps reduce emissions to a low level. Ask your GMC dealer for a Caballero catalog. Caballero Diablo is shown.



VANDURA

Versatile, strong and job-proven commercial van, family van or RV—a great value in the standard version or cab can be personalized to suit your needs. Trailering Special equipment is available. Ask for a Vandura catalog.

CAB & CHASSIS MODELS (C & K 2500/3500)

Your choice of body equips GMC Cab & Chassis models for wrecker, delivery, construction, or other application. Factory-installed 9'-long stake and platform body is available on 135.5"-wheelbase C-3500 model. GVW ranges from 8,600 to 10,500 lbs. 4-WD models are available. Ask for a Pickup catalog.



VALUE VAN

This forward-control Value Van offers bigger cubic load capacity for city delivery or specialized utility trades in '81! Three steel bodies and three aluminum bodies are available on 125", 133" and 157" wheelbases. Ask for a Value Van catalog.

A WORD ABOUT ENGINES

Light duty GMC Trucks are equipped with GM-built engines produced by various divisions. See your GMC Truck dealer for details.



MAGNAVAN

Offers bigger cubic load capacity in '81! Standard 76" inside height creates up to 570 cu. ft. of load space. Available with 10' or 12' steel or aluminum bodies on 125" single or dual-rear-wheel chassis or 146" dual-rear-wheel chassis. Ask for the Vandura catalog.



5000-6000-7000 SERIES SINGLE AXLE

A single-axle short conventional with a 96.75" BBC. GVWRs to 35,000 lbs. and GCWRs to 60,000 lbs. Available power includes an in-line six (not available in California) and V8 gasoline engines, and the 8.2 Liter Detroit Diesel Fuel Pincher Diesel. Ask for a 96.75" Short Conventional catalog.



7000 SERIES TANDEM AXLE

Truck and tractor models with GVWRs to 50,000 lbs. and GCWRs to 60,000 lbs. Operators can select the available Allison automatic transmission combined with the 8.2 Liter Fuel Pincher Detroit Diesel engine. 6.0 Liter gasoline engine is standard. Larger engines are available. Ask for the 96.75" Short Conventional catalog.



SCHOOL BUS CHASSIS

GMC cowl model B6PO42 School Bus Chassis, available on 149½" to 274" wheelbases, meet NEA standards for school bus operation. A 5.7 Liter V8 gasoline engine is standard. 8.2 Liter Fuel Pincher Diesel is available. Automatic transmission is available. Ask for a catalog.



Trucks are what we're all about.
GMC TRUCK & COACH DIVISION

GENERAL MOTORS CORPORATION
 PONTIAC, MICHIGAN 48053

ADV-81-13



TOP KICK

A 92.3" BBC Short Conventional with a fiberglass tilt hood. The hood configuration accommodates the available CAT 3208 diesel to provide full diesel operating advantages. Short 92.3" BBC permits operators to haul 45' trailers in states with a 55' overall length limit. GVWRs to 50,000 lbs. Ask for a Top Kick catalog.

LITHO IN USA