

# LEXUS LX

---

2022





# WELCOME TO LEXUS

---

Thank you for your interest in Lexus. You've taken the first step into a world of thoughtfully engineered products, precision craftsmanship and unrivalled Guest care. Welcome to a luxury experience where we strive to treat you like a "Guest in our home."

Life can be full of pressures, yet also full of moments to capture and enjoy. At Lexus, we want to give you the freedom to chase and experience those moments. That's why we dedicate the time toward every vehicle and every service – so you can make the most of yours.

We know time is the ultimate luxury and our brand promise is to focus our efforts on delivering vehicles, technologies and guest services that allow you to enjoy those special moments in life.

I invite you to explore our 2022 model selection. Whether it's one of our luxury SUVs, a breathtaking coupe or a nimble performance sedan, I know there is a Lexus waiting to help you enjoy the drive and make time for amazing.

A handwritten signature in black ink, reading "M. Gilbert". The signature is fluid and stylized, with a prominent initial "M" and a long, sweeping underline.

**Martin Gilbert**  
Director of Lexus Canada

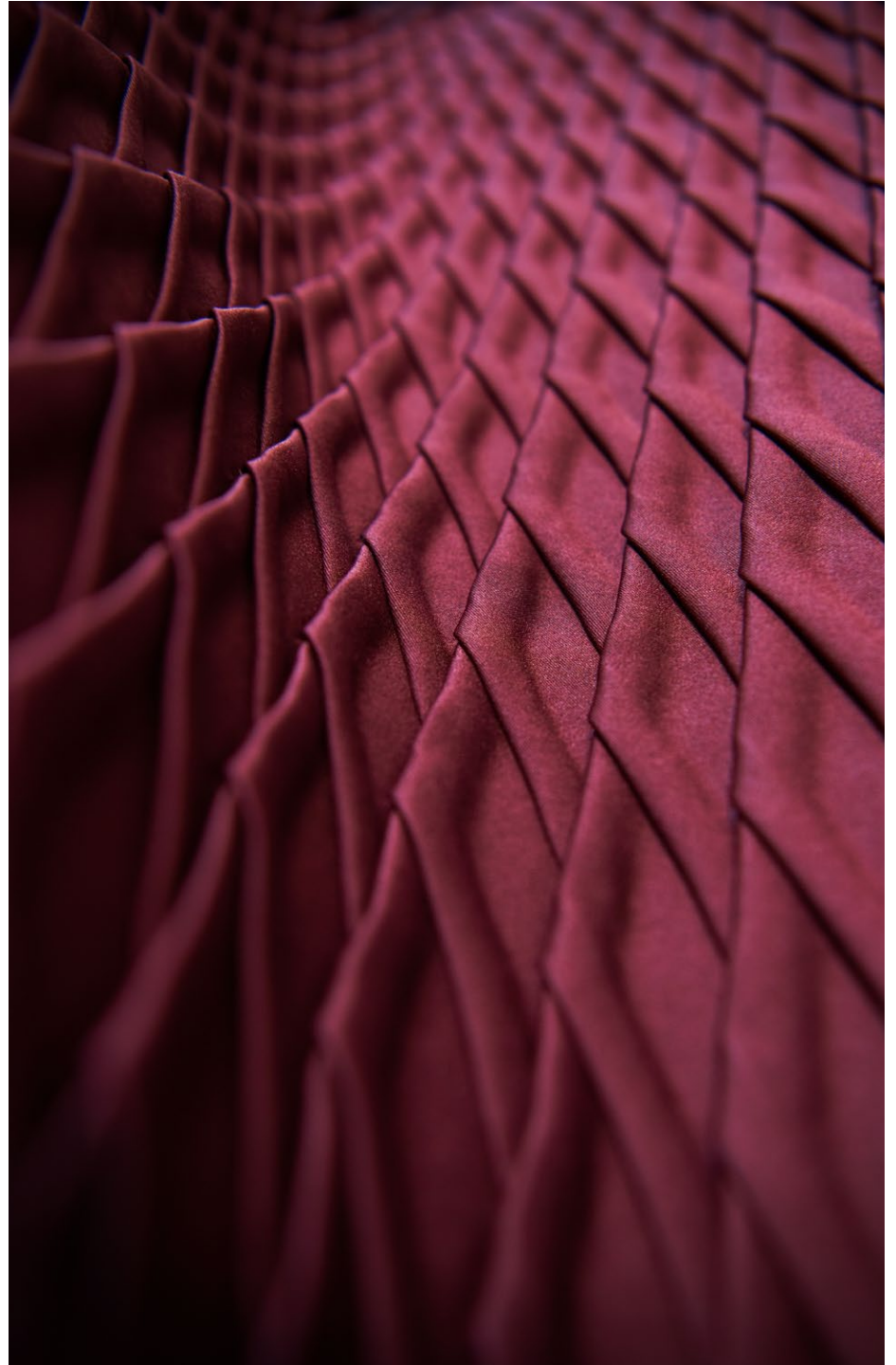
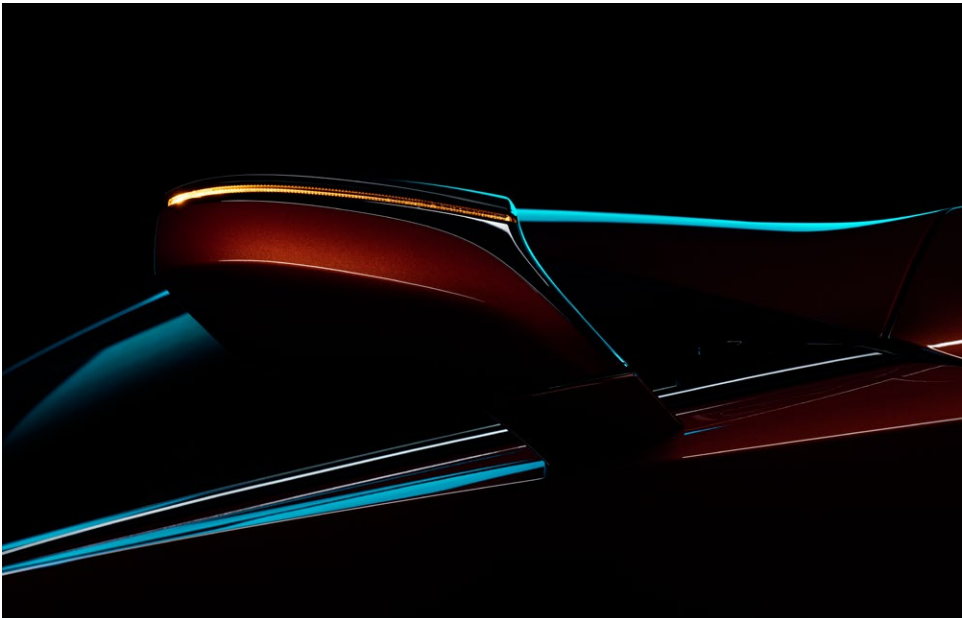


# EXPERIENCE SOMETHING GREATER

---

From the start, Lexus has redefined luxury. The Japanese principle of Omotenashi brings unrivalled Guest hospitality, with a dedication to treating everyone with warmth, care and respect as if they were a Guest in our home. Its cutting-edge design and exceptional attention to detail shows the meticulous craftsmanship of legendary Lexus Takumi Masters. Lexus looks forward to realizing a brighter, cleaner future thanks to its innovative electrified vehicle offerings, which encapsulate the “Lexus Electrified” vision. Along with pioneering innovations, impassioned styling and a thirst for enhancing every drive, it’s a luxury experience unlike any other.









## THE EDGE OF INNOVATION

---

Go further than you ever thought possible, with the all-new Lexus LX 600. Redesigned from the ground up, the LX delivers superior prowess off-road and on, and is equipped with an interior that offers unmatched levels of luxury and intuitive technology. Crafted with attention to every detail, the reconceived LX 600 sets and exceeds the bar for versatility and confidence, inviting you to behold beyond on every drive.





## SOPHISTICATED. STRIKING. SUPERIOR.

---

Designed to be as innovative as it is striking, the interior of the LX 600 is the ideal blend of aesthetic and luxury. Equipped with an executive VIP package that pampers passengers with features such as exclusive curved headrests and seats, an all-new rear seat entertainment system, and ultra-luxury climate control system, the LX makes every journey as enjoyable as its destination.





# UNPARALLELED REFINEMENT. UNPARALLELED POWER.

No matter where your journey may take you, the LX 600 provides the performance you need to conquer, and the superior design to do it style. Powered by a 3.5 L V6 twin-turbo gasoline engine, with an output of 409 HP and maximum 479 lb-ft of torque, the redesigned LX is

perfect for commanding any road or condition. Not only can you drive in confidence, you can also arrive in elegance, with the choice of four sleek trim options. Enjoy versatile opulence in the all-new VIP Executive grade, or a powerful look and feel in the *F SPORT* grade.

	POWER <sup>1</sup>	ENGINE	FUEL RATING <sup>1</sup> (L/100 km) (City/Hwy)	SEATS	AIRBAG <sup>2</sup>
LX 600	409 HP	3.5 L, V6	14.2/10.8	7	10



## ***F SPORT***

---

Experience the exhilaration of style and performance with *F SPORT* packages for your everyday driving enjoyment. *F SPORT* features interior enhancements such as paddle shifters, an LFA-inspired digital dashboard, and enhanced steering wheel, shift knob and seating. The exterior features an attention-grabbing mesh grille and exclusive *F SPORT* alloy wheels. Select *F SPORT* packages also feature Adaptive Variable Suspension for even greater control of the road.







# TECHNOLOGY

## LEXUS INTERFACE

Stay connected and in control with the latest evolution of Lexus Interface. Enjoy added confidence with the Drive Connect Package, complete with Cloud Navigation, which supports Google star ratings and real-time updates, and Intelligent Assistant, the voice-activated system ready to answer your every question. In addition to staying confident, the all-new Lexus Interface allows you to stay safe, with Safety Connect. Whether you experience something as simple as a flat tire or as urgent as a collision, you have access to emergency SOS and enhanced roadside assistance at the push of a button. Finally, experience true connectivity and convenience on every drive, with Wireless Apple CarPlay™ and Android Auto.™

Visit [Lexus.ca/Interface](https://Lexus.ca/Interface) to view vehicle compatibility and more information regarding complimentary trial terms.



RX 350 Shown for Demonstrative Purposes.

## LEXUS APP

With the Lexus App, the opportunities to stay connected to your vehicle are more plentiful than ever. On 2022 Lexus models, use Remote Connect to monitor your vehicle's status, even when it's out of sight. Conveniently start or unlock your vehicle from your smartphone, Amazon Alexa,<sup>TM</sup> Google Assistant devices and/or select smartwatches. Set guest parameters for occasional drivers, such as valets or family members, and receive a notification if a boundary is crossed. Plus, with Service Connect, convenient vehicle health reports with information about your Lexus' maintenance needs are sent right to your Lexus App, so you can always stay informed.<sup>3</sup>

Visit [Lexus.ca/Enform](https://Lexus.ca/Enform) to view vehicle compatibility and more information around complimentary trial terms.



# LEXUS SAFETY SYSTEM+

---

Lexus Safety System+ 2.5 (LSS+ 2.5) is a comprehensive suite of advanced technologies and intelligent sensors that help keep you protected and create a more confident driving experience to focus on the road ahead.<sup>2</sup>

## LSS+ 2.5:

- Pre-Collision System
- Lane Tracing Assist
- Automatic High Beam
- All-Speed Dynamic Radar Cruise Control with Curve Speed Management

Visit [Lexus.ca/Safety](https://Lexus.ca/Safety) to learn more about LSS+ 2.5.

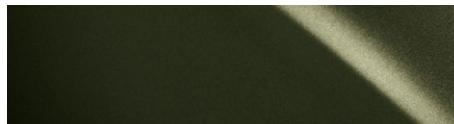


# EXTERIOR COLOURS

---



EMINENT WHITE PEARL



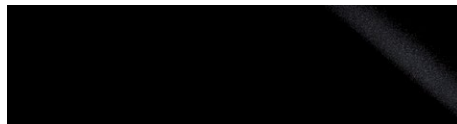
NORI GREEN PEARL



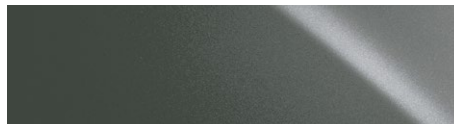
ATOMIC SILVER



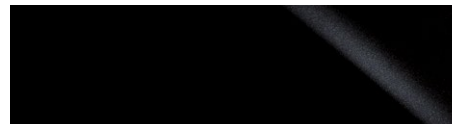
ULTRA WHITE (*F SPORT*)



BLACK (*F SPORT*)



MANGANESE LUSTRE



CAVIAR

# INTERIOR COLOURS

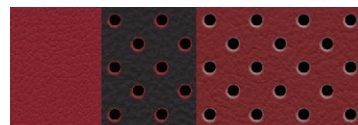
---



BLACK



BLACK (*F SPORT*)



CIRCUIT RED



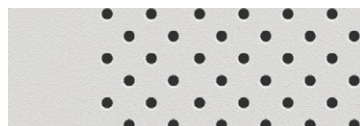
CRIMSON RED



PALOMINO



CARAMEL SUNSET



WHITE WITH PEPPERCORN  
ACCENTS



# WARRANTY INFORMATION

## SERVICE COMMITMENT

On top of enjoying the highest quality product, Lexus also delivers through a professional Dealer network, a unique and uncompromising level of after-sales service. First Class Service Concept. The highest level of professionalism and vehicle support ensure that Lexus ownership experience is as luxurious as the vehicles.

## WARRANTY

Our Lexus Warranty Comprehensive Coverage includes:  
48 months/80,000 km.

## SERVICE REPLACEMENT PARTS WARRANTY

24 months/40,000 km

Applicable to Lexus Genuine Parts installed by a Lexus Dealer on a Lexus vehicle or purchased over the counter.

## HYBRID-RELATED COMPONENTS

96 months/160,000 km (Applies to battery control module, hybrid vehicle control module, hybrid battery and the inverter/converter.)

2022 Model Year HV Battery coverage has been extended to 10 years or 240,000 km.

## POWERTRAIN

72 months/110,000 km.

## CORROSION PERFORATION

72 months/unlimited kilometres.

## MAJOR EMISSION CONTROL COMPONENTS

96 months/130,000 km

Please see your Lexus Dealer for details. Lexus will even provide five days of alternate transportation if your vehicle is required to stay at the dealership for an extended period of time due to a warrantable condition.

## EXTRA CARE PROTECTION

Extend beyond the new vehicle warranty and enhance your peace of mind with Lexus Extra Care Protection.

## ROADSIDE ASSISTANCE

As a proud owner of a Lexus vehicle, you won't have to worry about obtaining assistance when mishaps requiring Emergency Roadside Service or Mechanical Breakdown Towing are needed. Throughout Canada and the continental U.S., our Central Emergency Roadside Services Operator will always be there to ensure you receive prompt, efficient services from one of the many facilities qualified under our approved Roadside Assistance Program. Twenty-four hours a day, 365 days a year, we will be there to help.

## LEXUS FINANCIAL SERVICES

Come talk to the experts whose exclusive business is financing and leasing Lexus vehicles. You'll find our interest rates fully competitive and our terms flexible – up to 72 months. Our online services conveniently allow you to confirm current rates and receive your credit approval in advance of selecting the Lexus that's right for you. For help, visit your Lexus Dealer or [lexus.ca](https://lexus.ca), or call 1-800-26-LEXUS.

## LEXUS CANADA

Every effort has been made to ensure the specifications and equipment shown are accurate based on information available at time of printing. In some cases, certain changes in standard equipment, options or product delays may occur, which are not reflected in this brochure. Lexus Canada reserves the right to make these changes without notice or obligation. Some of the photography in this brochure features U.S. or overseas models, shown with optional equipment that may not be available in Canada. Your Lexus Dealer is the best source for up-to-date information.

**Lexus.ca**  
**1-800-26-LEXUS**

To sign up for information on Lexus, go to **[experience.lexus.ca](https://experience.lexus.ca)**  
Lexus Canada  
One Toyota Place,  
Toronto, Ontario  
M1H 1H9

\*Vehicles in this brochure shown with optional equipment. Some features mentioned and/or shown in this brochure may only be available as part of an optional package. Under very cold conditions, the operation of some vehicle electronic systems using liquid crystal technology (such as CD, DVD, NAV and Audio displays) may be adversely affected until a warmer interior vehicle temperature is reached. Lexus reminds you to place small children in CSA-approved car seats - in the rear seats, to always wear your seatbelts, and to drive safely. **1. Horsepower/Performance:** Ratings achieved using the required premium unleaded gasoline with an octane rating of 91 or higher. The Lexus Hybrids have nearly 70% fewer smog-forming emissions compared against similarly equipped conventional gasoline power vehicles. Based on North American sales data and Federal Tier 2 engine emission requirements. **Fuel Rating:** Estimates determined using approved Government of Canada Test Methods. Actual fuel consumption will vary based on driving habits and other factors. Refer to the Government of Canada Fuel Consumption Guide for further information. **2. For all safety features,** System effectiveness depends on many factors. Please see your Owner's Manual for further information and a complete list of limitations and directions. **Lane Departure Alert** is designed to read the lane markers of certain roads. If the vehicle approaches the outer limits of its lane, the system warns the driver that corrective action may be required. It is not a collision-avoidance system and is not a substitute for safe and attentive driving. **Lane Trace Assist** is designed to read the lane markers of certain roads. If the vehicle approaches the outer limits of its lane, the system warns the driver that corrective action may be required. It is not a collision-avoidance system and is not a substitute for safe and attentive driving. Do not rely exclusively on the **Rear Cross-Traffic Alert System**. There are limitations to the function, detection and range of the system. You should also look around outside your vehicle, over your shoulder and use your mirrors to confirm rearward clearance. Do not rely exclusively on the **Blind Spot Monitor System** to determine if a lane change is safe. Always look over your shoulder and use your turn signal before changing lanes. There are severe limits to the function, detection range and clarity of the monitor system. **Dynamic/Radar Cruise Control** was designed to assist the driver and is not a substitute for safe and attentive driving. **The Pre-collision System** is designed to help reduce the crash speed and damage in certain frontal collisions only. It is not a collision avoidance system and is not a substitute for safe and attentive driving. System effectiveness depends on many factors, such as speed, driver input and road conditions. **Automatic High Beam** feature can help improve vision at night. However, conditions such as a dirty windshield, rapidly changing light conditions or hilly terrain will limit effectiveness so the driver may need to manually adjust the high beams from on to off. **Brake Assist** is designed to help the driver take full advantage of the benefits of ABS. It is not a substitute for safe and attentive driving. Braking effectiveness also depends on proper brake-system maintenance and tire and road conditions. All the **airbag ("AB") systems are Supplemental Restraint Systems**. All ABs (if installed) are designed to inflate only under certain conditions and in certain types of severe collisions: frontal and knee ABs typically inflate in frontal collisions; side and side curtain ABs in side collisions; Roll-Sensing Curtain ABs at a severe tilt degree, roll or lateral G-force.[CN1] **3. The Navigation System** is designed to assist in locating an address or point of interest. Discrepancies may be encountered between the system and your actual location. Road system changes may affect the accuracy of the information provided. Rely on your common sense to decide whether to follow a specified route. Detailed coverage not available for every city or roadway. Periodic updates available at an additional cost. See your Navigation System Owner's Manual for further details. Navigational systems in some vehicles are available with bilingual capability. **Mark Levinson®** is a registered trademark of Harman International Industries Incorporated. Be sure to obey traffic regulations and always maintain awareness of road and traffic regulations. Apps/Services vary by phone/carrier; functionality depends on many factors. Select Apps use large amounts of data; you are responsible for these charges. Contact with the response centre may not be available in all areas. Service agreement required. A variety of subscription terms available. Charges will vary. [CN2] **Lexus App:** Driving while distracted can result in loss of vehicle control. Obey all local laws concerning the use of the systems while driving as some laws prohibit the use of electronic devices while operating a vehicle. Enform Services are dependent upon connection to a 3rd party compatible wireless cellular network, either 3G GSM/GPRS or LTE. Lexus is not responsible for cellular network discontinuance. Select Enform apps and services use significant amounts of data and customers are responsible for all data charges. Apps and services vary by phone/carrier and not all services are available all the time and in all locations. Smartphone operating system updates may affect connectivity between your phone and vehicle; Lexus is not responsible for connectivity issues. **Enform Remote and Service Connect:** Do not remotely start engine if vehicle is in an enclosed space or vehicle is occupied by a child. Enform Remote and Service Connect are dependent upon an operative telematics device, a cellular connection, navigation map data and GPS satellite signal reception, and other factors outside of Lexus' control. Registration and app download are required. Select Apps use large amounts of data; you are responsible for charges. To learn about Enform data collection, use, sharing and retention, please visit [www.Lexus.ca/Enform-privacy](http://www.Lexus.ca/Enform-privacy). The Enform Remote and Service Connect trial period is at no extra cost, after which enrollment in a paid subscription is required. Terms and conditions apply. See [Lexus.ca/Enform](http://Lexus.ca/Enform) for full details. **Amazon Alexa:** Amazon, Alexa and all related logos are trademarks of Amazon.com, Inc. or its affiliates. Skills and services subject to change at any time without notice. Three-year complimentary trial; app downloads required. **Enform Destination Assist:** Be sure to obey traffic regulations and maintain awareness of road and traffic conditions at all times. The Destination Assist trial period is at no extra cost after which enrollment in a paid subscription is required. Terms and conditions apply. **Enform Safety Connect:** Contact with Safety Connect™ response centre is dependent upon the telematics device being in operative condition, cellular connectivity availability, and GPS satellite signal reception, which can limit the ability to reach the response centre or receive emergency support. The Enform Safety Connect trial period is at no extra cost after which enrollment in a paid subscription is required. Terms and conditions apply. **Android Auto:** Android Auto™, Google Assistant™, Google Maps™ and Google Play™ are trademarks of Google Inc. All rights reserved. **Apple CarPlay:** Apple CarPlay™, Siri®, iPhone® and App Store® are registered trademarks of Apple Inc. All rights reserved.



Lexus.ca

1-800-26-LEXUS

To sign up for information on Lexus, go to [Experience.Lexus.ca](https://Experience.Lexus.ca)

Lexus Canada, One Toyota Place, Toronto, Ontario, M1H 1H9



All information is accurate at the time of publication.

March 17, 2022

Version 1.0

