

GMC **PICKUPS**



RUGGED QUALITY TRUCKS

GMC PICKUPS UP FRONT FOR '81

Looks new . . . feels new . . . weighs less . . . looks great . . . offers the optional 5.0 Liter V8 with the new ESC (Electronic Spark Control) . . . and a new system on 4-WD models . . . that's GMC for '81! It's value. Here's what was done . . .

The front-end sheet metal was redesigned for reduced weight and improved aerodynamic appearance. New-style front end includes single rectangular lamps for standard, dual rectangular lamps for available Deluxe Front Appearance Package. Bumpers are restyled (front and rear for Wideside, front only for Fenderside). Parking lamps are newly located in the front bumper, and an air dam is attached to the front bumper. There's more . . . drive on.

NEW EXTERIOR APPEARANCE! New-style available moldings placed low on the body result in an impressive appearance for available special two-tone schemes. There are four new colors: Slate, Dark Slate, Dark Chestnut, and Yellow—and 11 carryover colors. There are newly styled model designation plates and available bright wheelwell trim on Widesides.

INTERIORS ARE HANDSOME! There are new colors, new trims, new fabrics and new features designed to make your road time more pleasurable. Now, available bucket seats can be ordered with custom cloth upholstery. See Page 6.

ADDITIONAL LOAD-CARRYING MUSCLE! See Page 12 for three Cab & Chassis models with 10,500-lb. GVW.

Sierra Classic is GMC's top Pickup with a new look for '81. It looks great . . . great to drive and offers impressive value.

Sierra Classic Wideside exterior features new bright wheel opening moldings and new bright side and rear moldings with Black paint accent trim (except dual-rear-wheel models). Wideside models also include a brush-finished bright tailgate applique with GMC nameplate and bright trim for tail lamps.

Both Wideside and Fenderside models include bright Sierra Classic nameplates on front fenders, bright windshield and rear window moldings, bright trim for front side marker lamps, dual horns, chromed front bumper, body-to-fender insulation, deluxe grille (grille has Argent and chromed finish and brushed chrome center bar with GMC lettering), dual rectangular headlamps set in bezels which match the grille finish, bright cab back panel moldings, cowl and hood sound-deadening insulation, and secondary door weather stripping.

A WORD ABOUT THIS CATALOG

We have tried to make this catalog as comprehensive and factual as possible and we hope you find it helpful. However, since the time of printing, some of the information you'll find here may have been updated. Also, some of the equipment shown or described throughout this catalog is available as factory-installed options, as dealer accessories, and as specialized equipment from various independent suppliers at extra cost. Your dealer has details and, before ordering, you should ask him to bring you up to date.

The right is reserved to make changes at any time, without notice, in prices, colors, materials, equipment, specifications and models. Check with your GMC dealer for complete information.



High Sierra Wideside.



Sierra Grande Wideside.



High Sierra Fenderside.



Sierra Wideside.



MORE IMPROVEMENTS FOR '81! High-strength, low-alloy steel (HSLA) bumpers on Wideside models mean reduced weight. The use of other strong, lightweight materials and redesign results in an overall weight reduction of 308 lbs. depending upon model. Corrosion-resistant steels are widely used in addition to stone shields.

SIERRA CLASSIC IS TOPS IN GMC INTERIORS

Luxurious comfort in a full-foam, full-width bench seat and Crew Cab rear bench seat in choice of new custom cut-pile velour cloth or new leather-grain vinyl upholstery. Colors for '81 are: new Black or Green for 2-door cabs only; new Doeskin, Blue, and Carmine for 2-door cabs and Bonus and Crew Cabs. Available high-back bucket seats for 2-door cabs can be ordered in Black or Doeskin color custom vinyl or Doeskin color custom cloth.

The padded instrument panel includes brushed-Silver instrument cluster bezels, brushed-Silver pad applique, and bright Sierra Classic nameplate, plus gage-type instrument cluster.

Sierra Classic interior also features • Color-keyed headliner and trim moldings for 2-door-cab models • Color-keyed carpeting on floor (except Bonus Cab rear floor) and lower door panels • Dome lamp with door-operated switches, visor mirror, cigarette lighter, and ashtray light • Custom steering wheel with bright, brush-finished horn button • Door trim panels with bright, brushed-finished trim in upper depression; color-keyed soft vinyl insert in armrest depression, stowage pockets and closing-assist straps for front doors • Insulation on floor (extra thick), headliner, cab back panel and at cowl • Cowl side trim panels • Bright control lever for available 4-speed manual transmission or 4-WD model transfer case • Folding backrest for 2-door-cab seat and Crew Cab rear seat.

Sierra Classic interiors are available for any GMC Pickup. See Page 9 for standard GMC Pickup interior equipment.



Available Sierra Classic leather-grain vinyl seat.

Available Sierra Classic cut pile velour cloth seat.



Folding backrest is standard.

HIGH STYLE . . . RUGGED QUALITY

High Sierra Wideside exterior features bright wheel opening moldings with Black paint accent trim (except dual-rear-wheel models). Wideside models also feature a brush-finished bright tailgate applique with GMC nameplate and bright trim for tail lamp.

Both Wideside and Fenderside High Sierra include • Bright High Sierra nameplates on front fenders • Body sound insulation • Cowl and hood sound-deadening insulation • Secondary door weather stripping • New cab back panel moldings • Bright windshield and rear window moldings • Dual electric horns • Chromed front bumper • Bright trim for front side marker lights.

High Sierra trim is available for all GMC Pickups except Bonus Cab and Crew Cab. See Page 13 for quality construction features, available two-tone paint combinations on Back Cover, engines Page 14, and available accessories and equipment Page 15.



High Sierra Wideside Diesel Pickup model.

ROOMY, ELEGANT INTERIOR

High Sierra's new-style instrument panel includes matching crackle-finish Silver colored instrument cluster faceplate and panel pad applique, cigarette lighter and ashtray, and bright High Sierra nameplate.

A full-foam, 3-passenger bench seat with folding backrest is upholstered in a choice of custom velour cloth or custom leather-grained vinyl in Black, Blue, Carmine, Doeskin or Green color. High-back bucket seats are available in Black or Doeskin color custom vinyl or Doeskin color custom cloth.

High Sierra interiors also include • Bright shift lever for available 4-speed transmission or 4-WD model transfer case • Custom steering wheel with bright, brushed-finish horn button • Door trim panels with Silver-colored crackle-finish applique for upper decorative depression and vinyl stowage pockets • Color-keyed headliner with fiberglass insulation backing and trim moldings • Matching trim moldings for windshield pillar and upper rear quarter panel • Cab back panel insulation • Sound insulation on cowl underside • Color-keyed carpeting over extra-thick floor insulation.

High Sierra interiors are available for all 2-door-cab GMC Pickups. See Page 9 for a list of the standard equipment that is also included in all High Sierra Pickups.



Available High Sierra leather-grain vinyl seat.

GMC SIERRA GRANDE

GMC Sierra Grande offers GMC's standard truck value and ruggedness plus these dress-up exterior trim and interior comfort and appearance items.

Sierra Grande Exterior Features for Wideside Pickups include new Black plastic body side and trim moldings with bright trim (except dual-rear-wheel models) and bright trim for tail lamps. There is bright trim for clearance lamps on Wideside dual-rear-wheel models.

Both Wideside and Fenderside Sierra Grande models include bright windshield and rear window moldings, dual horns, chromed front bumper, bright trim for front side marker lights, and new bright Sierra Grande nameplates on the front fenders.



Sierra Grande with custom leather-grain vinyl seat.



HIGH-BACK BUCKET SEATS are available in all trim levels for 2-door-cab models. The driver's seat is adjustable. The option includes a new-style, color-keyed, lockable center console; carpeting on the floor and lower cab back panel and extra-thick insulation.

Step Inside . . . Sierra Grande features a new-style instrument panel pad, Black crackle-finish instrument cluster faceplate with bright trim, matching pad applique and bright Sierra Grande nameplate; also included are cigarette lighter and ashtray light.

Two-door-cab models feature door trim panels with a bright-bordered Black crackle-finish insert. A standard full-foam, 3-passenger bench seat is upholstered in your choice of custom cut-pile velour cloth or custom leather-grain vinyl in new Black, new Doeskin color, Blue, Green, or Carmine color. Available high-back bucket seats can be specified in Black or Doeskin color custom vinyl or Doeskin color custom cloth. Upholstery for Sierra Grande Crew Cab or Bonus Cab is standard striped vinyl or available custom cloth or custom vinyl in Doeskin, Blue, or Carmine color.

Sierra Grande Pickups also include cab back panel insulation, sound-deadening insulation on cowl underside, Mystic-colored headliner and related moldings for Bonus/Crew Cab models, color-keyed rubber floor mats (except Bonus Cab rear door dome lamp with door-activated switches). Of course, all of the standard GMC Pickup features listed on Page 9 are also included in Sierra Grande.

For more information about Sierra Grande, see: available two-tone paint combinations on the Back Cover, construction features Page 13, engines Page 14, optional equipment Page 15.

GMC

Sierra Grande Wideside.



Sierra Classic Wideside with Exterior Decor Package.

EXTERIOR DECOR PACKAGE is available for all Wideside single-rear-wheel Pickup models. The package includes a new stand-up hood ornament and the molding package with bright-trimmed Black body side and rear moldings; bright wheel-opening and bright trim for side marker and tail lamps. (The new available molding package, standard on Sierra Classic models, may be specified instead.) Package includes striking color-coordinated upper body side and rear decal striping. Special two-tone paint treatment applies the accent paint color between the striping and the moldings. Available in eight two-tone paint and striping combinations.



High Sierra Fenderside model with 6½' box. Fenderside is available in all trim levels.

GMC SIERRA

GMC Sierra Pickups, available in sleek Wideside or Classic Fenderside 2- or 4-door-cab styles, are the handsome, value-packed standard models.

Exterior Sierra Features include: an Argent and Black painted standard grille and headlamp bezels with single rectangular headlamps, new-style Wideside tailgate with embossed White-painted GMC lettering (Black lettering for White trucks), single-note electric horn, and bright Sierra nameplates with series designation on front fender. There are 3+3 nameplates on Crew Cab and "Bonus Cab" nameplate on Bonus Cab.

Spacious, Styled Interior includes new-style instrument panel pad; bright-trimmed, Black crackle-finish instrument cluster faceplate; Black crackle-finish pad applique; and bright Sierra nameplate.

In 2-door-cab Sierra Pickups the seat upholstery is standard striped vinyl in a choice of new Black, new Doeskin, Blue, Green, or Carmine. Custom vinyl may be ordered at extra cost. Available high-back bucket seats (Page 6) can be ordered in Black or Doeskin custom vinyl. Sierra Bonus and Crew Cabs come only with bench seats in a choice of Blue, Doeskin, or Carmine standard striped vinyl. Sierra floor covering is embossed Black rubber mats.

For more about Sierra Pickups, see Page 9 for a list of the standard equipment that is included in Sierra, Page 13 for quality construction features, two-tone paint options on Back Cover, engines Page 14, and optional equipment Page 15.



Standard Sierra interior with striped vinyl seat.

GMC PICKUPS . . . GREAT VALUE FOR YOUR MONEY

These Standard Features are Included in Every GMC Pickup

Outside:

- Restyled front bumper, includes openings for parking lamps plus bumper-mounted air dam on models below 8,500 lbs. GVWR.
- 6½' or 8' cargo box available. Steel floor on Wideside; wood floor with steel skid strips on Fenderside.
- Choice of 15 colors including four new: Slate Metallic, Dark Slate Metallic, Dark Chestnut Metallic, and Yellow.
- Bright drip molding over side doors.
- Dual fixed-arm mirrors with adjustable 5⅞" x 4" chrome-finished heads.
- Two-speed electric windshield wipers/washers with new international graphics for interior switch.
- Lights: 2 backup, 2 rear side marker lamps with reflectors integral with tail lamps, 2 front combination parking/direction/hazard, 2 rear combination tail/stop/direction/hazard, 2 power headlamps, 1 rear license plate lamp, 2 front side marker lamps with reflectors.
- Bright hubcaps (except dual-rear-wheel models).
- Underframe spare tire carrier for C/K-1500 only.
- Mechanical jack and wheel wrench.

Inside:

- Instrument panel with newly styled instrument cluster and color-keyed pad. Includes accommodations for optional stereo radio front speakers, new 17-character vehicle identification plate, soft Black plastic control knobs with White graphics, and glove box.
- Instruments include: Gages: speedometer, odometer, fuel. Switches: lights, wiper/washer, headlight beam (foot), ignition, direction signal with lane-change position, hazard warning. Warning Lights: generator, oil pressure, engine temperature, seat belt, brake, direction/hazard signal, high beam.
- New full-width, full-foam, 3-passenger front bench seat; includes folding back with inertia-type latches on 2-door-cab models and color-keyed belts with push-button-type buckles (outboard lap/shoulder belts, center lap belt).
- Full-width, full-foam, 3-passenger rear bench seat on Crew Cab models with folding back and inertia-type latches; includes color-

- keyed outboard and center lap belts with push-button-type buckles.
- Door trim panels of color-keyed, embossed molded plastic with integral armrests and upper decorative depression.
- New chromed die-cast hardware for door and window handles.
- Painted areas match exterior primary color; interior trim coordinated with seat trim color.
- Ashtray located in instrument panel and in Crew/Bonus Cab rear door trim panels.
- 16" Black plastic steering wheel.
- Energy-absorbing Black steering column with anti-theft lock.
- Deluxe-air heater/defroster with new 4-position control switch that includes "OFF" mode for flow-through power ventilation and international graphics for heater blower and defroster.
- Instrument cluster light and courtesy/map light.
- Color-keyed right and left sun visors.
- Prismatic 10" rearview mirror with soft vinyl trim.
- Coat hook (RH all models; over rear doors in Bonus/Crew Cab).
- Full-length Black plastic scuff plates in 2-door cabs.
- Insulation on fire wall, under the front seat, floor, roof. Extra-thick insulation in front portion of Bonus/Crew Cab rear compartment.
- Hood-lock release.

GMC PICKUP MODEL AVAILABILITY

SERIES	WIDESIDE			FENDERSIDE			WIDESIDE			CAB & CHASSIS			
	2-Door Cab	2-Door Cab	Dual Rear Wheels	2-Door Cab	2-Door Cab	Bonus/Crew Cab	2-Door Cab	2-Door Cab	Bonus/Crew Cab	2-Door Cab	2-Door Cab	Bonus/Crew Cab	Bonus/Crew Cab
C-1500 (2-WD)	✓	✓	✓	✓	✓	✓	✓	✓	✓	✓	✓	✓	✓
C-1500 Diesel (2-WD)	✓	✓	✓	✓	✓	✓	✓	✓	✓	✓	✓	✓	✓
C-2500 (2-WD)	✓	✓	✓	✓	✓	✓	✓	✓	✓	✓	✓	✓	✓
C-2500/CBP (2-WD)	✓	✓	✓	✓	✓	✓	✓	✓	✓	✓	✓	✓	✓
C-3500 (2-WD)	✓	✓	✓	✓	✓	✓	✓	✓	✓	✓	✓	✓	✓
C-3500/C7C (2-WD)	✓	✓	✓	✓	✓	✓	✓	✓	✓	✓	✓	✓	✓
K-1500 (4-WD)	✓	✓	✓	✓	✓	✓	✓	✓	✓	✓	✓	✓	✓
K-2500 (4-WD)	✓	✓	✓	✓	✓	✓	✓	✓	✓	✓	✓	✓	✓
K-2500/CBP (4-WD)	✓	✓	✓	✓	✓	✓	✓	✓	✓	✓	✓	✓	✓
K-3500 (4-WD)	✓	✓	✓	✓	✓	✓	✓	✓	✓	✓	✓	✓	✓

STREET COUPE DECOR PACKAGES



Sierra Grande Fenderside

STREET COUPE is an exciting factory-installed trim package available for Sierra Grande Wideside or Fenderside Pickups with a 6½' box. The '81 package offers special sport two-tone exterior paint in a choice of five color combinations with coordinated interiors. New multicolored decal striping is added to the body sides and Fenderside tailgate. Interior includes color-keyed carpeting.

Sierra Grande Wideside.



Street Coupe also includes a new stand-up hood ornament, new-style deluxe grille and headlamp bezels with Black paint treatment. Dual rectangular headlamps, front and rear bumpers painted secondary body color. Wideside bumpers have resilient Black impact strips. Fenderside has impact strips only on the front bumper.

GMC 4X4 MODELS

Get added traction when you need it with a GMC 4x4. Available in Wideside and Fenderside one-half-, three-quarter-, and one-ton models with a 6½' or 8' box. Dual rear wheels and 10,000-lb. GVWR are available for K-3500 models.

New Automatic Locking Front Hubs are standard on K-1500 and K-2500 '81 GMC 4x4s. Shift into 4-WD or return to freewheeling without leaving the cab. The new aluminum transfer case has a floor-mounted shift range indicator console.

New Front Quad Shock Package. Available for K-1500/2500 models, consists of **quad** 25-mm front shock absorbers (two right- and two left-hand), 32-mm-diameter rear shocks, and a front axle pinion nose bumper mounted on the right-hand frame side to limit front axle windup.

Standard Features on 4-WD models include power steering, front stabilizer bar, power brakes, leaf-spring suspension, and drop-center frame design for low cab floor height. Three- or Four-speed manual transmission is standard depending on model. Automatic transmission is available. All trim options are available for 4x4 except that High Sierra is not available for Bonus/Crew Cab.



Above, Fenderside 4-WD High Sierra.



Below, Wideside 4-WD Sierra model.

GMC BONUS AND CREW CABS

Big Trucks For Big Jobs! Four-door Wideside Pickups with 74.3 cu. ft. of load space in the 8' box. GVWRs range from 8,600 lbs. for three-quarter-ton, single-rear-wheel models up to 10,000 lbs. for one-ton, dual-rear-wheel models with estimated payload capacity of 4,860 lbs. 4-WD K-3500 is available. Add another dimension to Bonus/Crew Cab with optional Trailering Special equipment that permits equipping trucks with hitches for towing of conventional or fifth wheel trailers weighing up to 12,500 lbs. Standard 4.8 Liter, 1-bbl., in-line six gasoline engine is coupled with a 4-speed manual transmis-

sion. Automatic transmission and larger gasoline engines are available. Ask your GMC dealer for details.

INTERIORS Three trim levels are offered: standard Sierra or available Sierra Grande and Sierra Classic. A front bench seat in Blue, Carmine, or new Doeskin-color striped vinyl is standard. Custom velour cloth, or custom leather grain vinyl, front and/or rear seat is available depending on model. Crew Cab rear bench seat has a standard folding back with new easy-operating, inertia-type latch.



Rear seat folding back.



Bonus Cab has 66 cu. ft. of lockable cargo space.



Sierra Crew Cab shown with available dual rear wheels.

MODEL	NOMINAL RATING AND TYPE	WHEELBASE (IN.)	OVERALL LENGTH (IN.)	PAYLOAD RANGE
CONVENTIONAL CAB: TC/TK-20903 TC/TK-30903	¾-Ton, 2- and 4-Wheel 1-Ton, 2- and 4-Wheel	131.5	206	2,832-4,675 4,850-5,160
TC/TK-31003	1-Ton, 2- and 4-Wheel	135.5	215.5	4,620-5,980
TC/TK-31403	1-Ton, 2- and 4-Wheel	159.5	239.5	4,950-6,340
CREW CAB/BONUS CAB: TC-20943 + AS3/YG4 TC/TK-30943 + AS3/YG4	¾-Ton, 2-Wheel 1-Ton, 2- and 4-Wheel	164.5	238.9	Up to 3,975 4,085-5,435

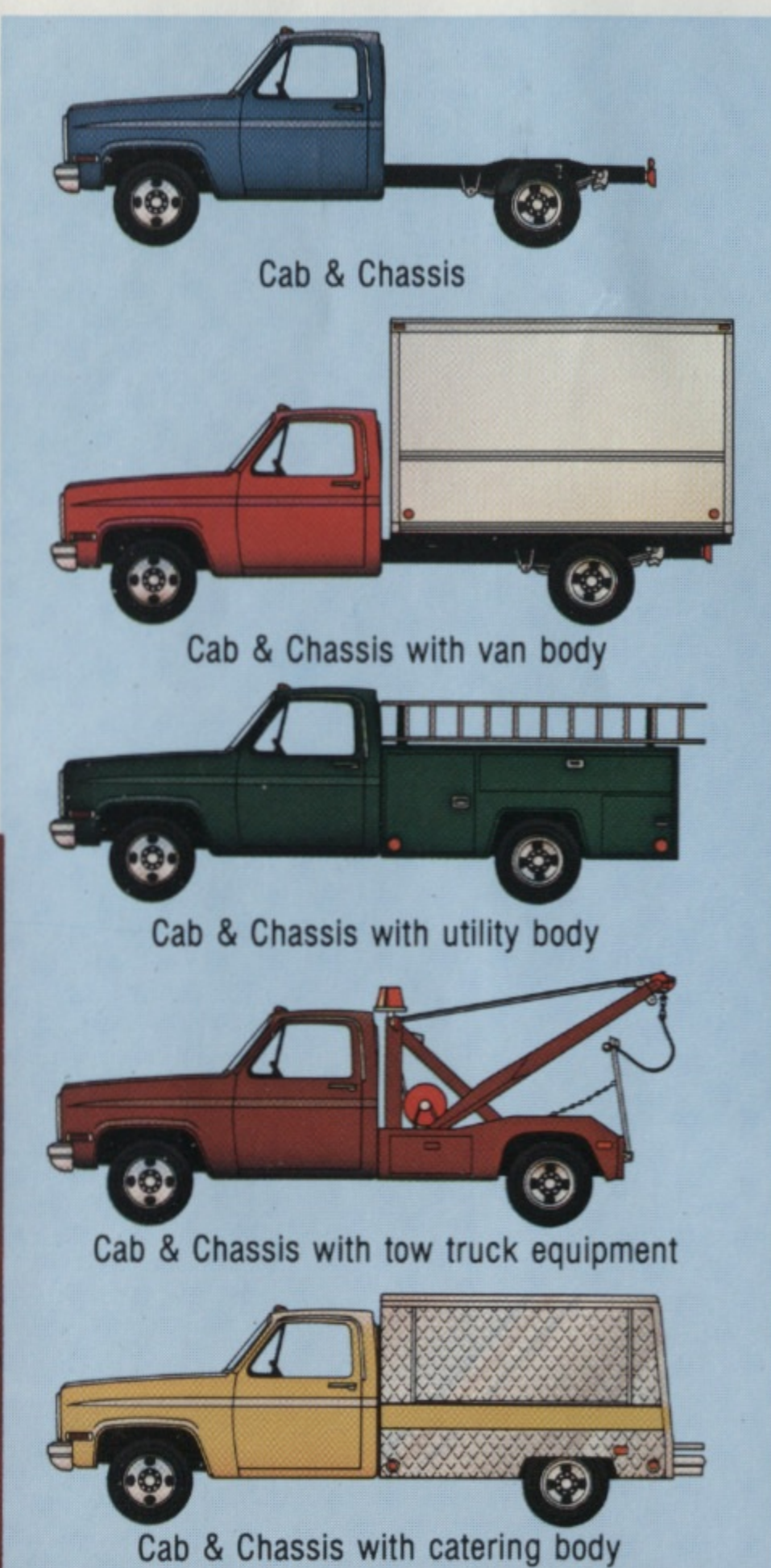
GMC Cab & Chassis models provide strong, job-proven chassis for mounting stake, van, or specialized vocational bodies. See your GMC dealer for more information.

Standard Cab & Chassis is a three-quarter-ton, 2-door, 2-WD. It features a 4.8 Liter in-line six engine, 3,800-lb. front suspension, 6,000-lb. rear suspension, front stabilizer bar, heavy-duty front and rear shock absorbers and power brakes. In '81, all C/K-2500 Cab & Chassis models have a single 8,600-lb. GVWR. C/K-3500 (except three new models) have GVWRs of 9,000, 9,200, or 10,000 lbs. Series K-2500 4-WD Cab & Chassis models are equipped with new automatic locking front hubs.

GMC CAB & CHASSIS

Three New Models For '81. Big news for '81 is the introduction of three new available C-3500 one-ton, 2-WD, dual-rear-wheel Cab & Chassis with GVWR of 10,500 lbs. and a payload of 5,895 lbs.: (1) 135.5"-wheelbase and (2) 159.5"-wheelbase 2-door cabs, and (3) 164.5"-wheelbase Bonus or Crew Cab. Standard equipment for the new models includes a 5.7 Liter V8 engine, new heavy-duty front suspension with auxiliary air springs, 7,500-lb.-capacity rear axle and rear springs, and front stabilizer bar.

Available Equipment For Cab & Chassis. A factory-installed 9' stake and platform body is available for C-3500, 135.5"-wheelbase, 2-door-cab model. Ask your GMC Truck dealer about sources for special vocational bodies. You may order available automatic instead of standard 4-speed manual transmission. Most of the available appearance, comfort, and convenience items and radio equipment available for GMC Pickups are also available for Cab & Chassis models.



Cab & Chassis

Cab & Chassis with van body

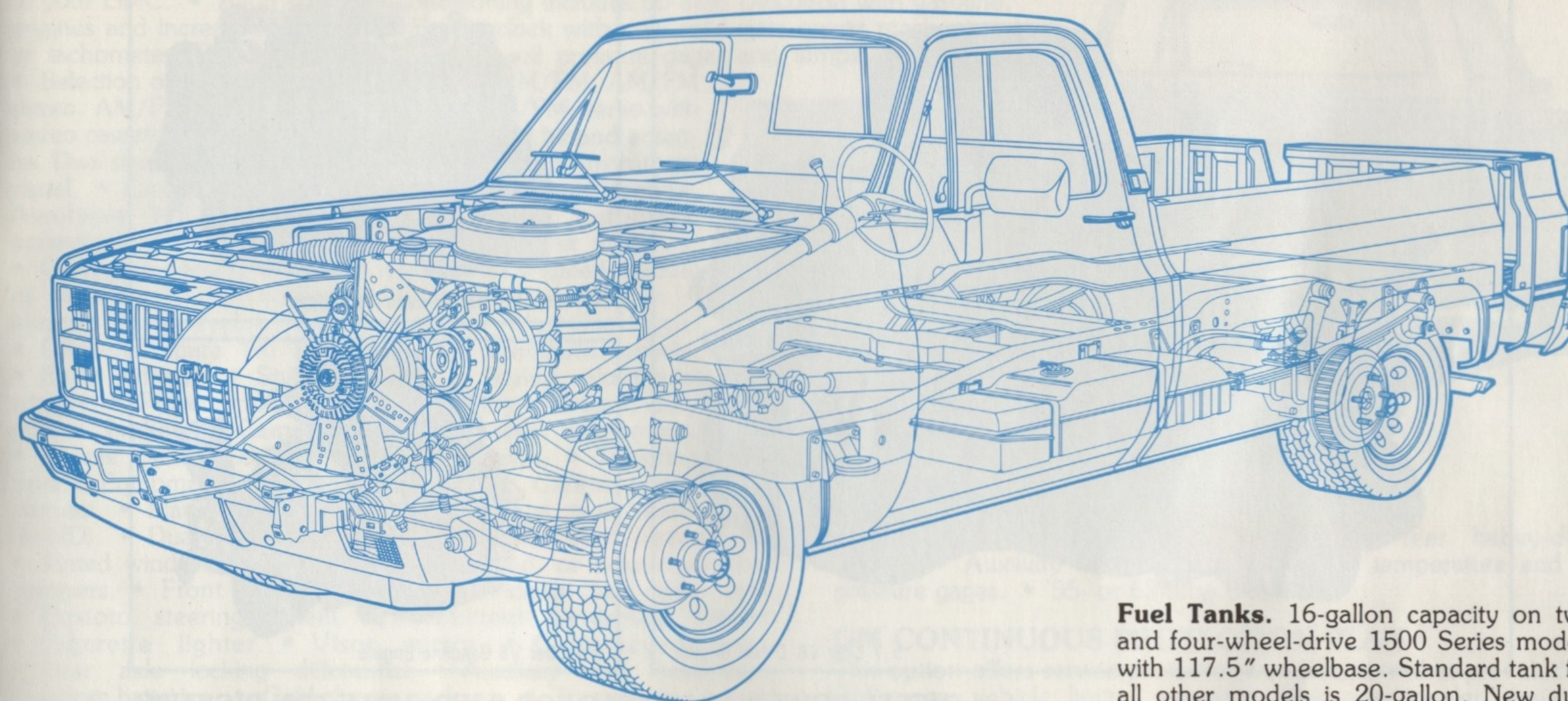
Cab & Chassis with utility body

Cab & Chassis with tow truck equipment

Cab & Chassis with catering body



GMC PICKUPS . . . RUGGED QUALITY TRUCKS



For 1981, Pickups have lost up to 308 lbs. of weight depending upon model and offer improvements in design and components to meet today's demands. Check out these impressive features.

Overall Structural Rigidity is sought through double-walled construction of hood, front fenders, doors, Wideside cargo box sidewalls and tailgate, and portions of the cab. For '81, new front door hinge reinforcements and new compression-rebound-type cab body mounts have been added.

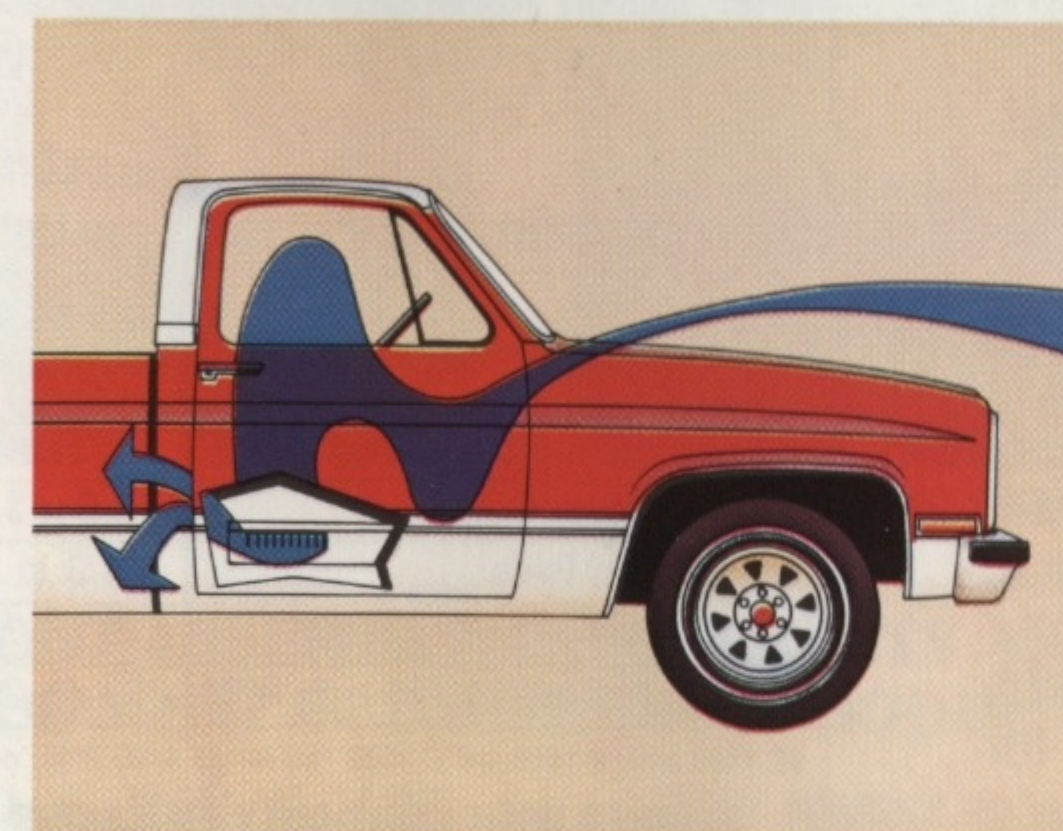
Girder Beam Front Suspension on 2-WD models permits front wheels to take bumps and ruts independently to help smooth the ride.

Transmissions—A 3-speed, fully synchronized manual transmission with column-mounted controls is standard on models below 8,600-lb. GVW. A 4-speed manual with floor-mounted controls is standard on models with 8,600-lb. and above GVW. Automatic transmission is standard on Diesel Pickups and available for other models.

Salisbury-Type Rear Axle—is standard. Features large ring gear, roller bearings, wide range of ratios. Locking differential is available with some models.

Two-Stage Multileaf Rear Springs—provide a soft ride with a light load and firm support when loaded to capacity.

Shock Absorbers—Staggered rear shocks help control power hop. Heavy-duty shock absorbers are available on most models, standard on one-ton models. There's a new available Quad Shock Package for 4-WD, see Page 10.



Standard Power Ventilation routes outside air into cab through cowl-integrated plenum chamber, exiting through door valves. New "OFF" mode on heater fan permits ventilation to operate only when operator desires.

Brakes. Standard hydraulic brake system, self-adjusting and computer-matched to GVWR, includes front disc brakes with audible wear-warning signal; rear drum brakes. '81 models below 8,600-lb. GVW feature new low drag front disc brake calipers with quick-take-up master cylinder. '81 brake lines aft of the dash panel have an additional anti-corrosion treatment of zinc-rich paint over the existing anti-corrosion terne coating.

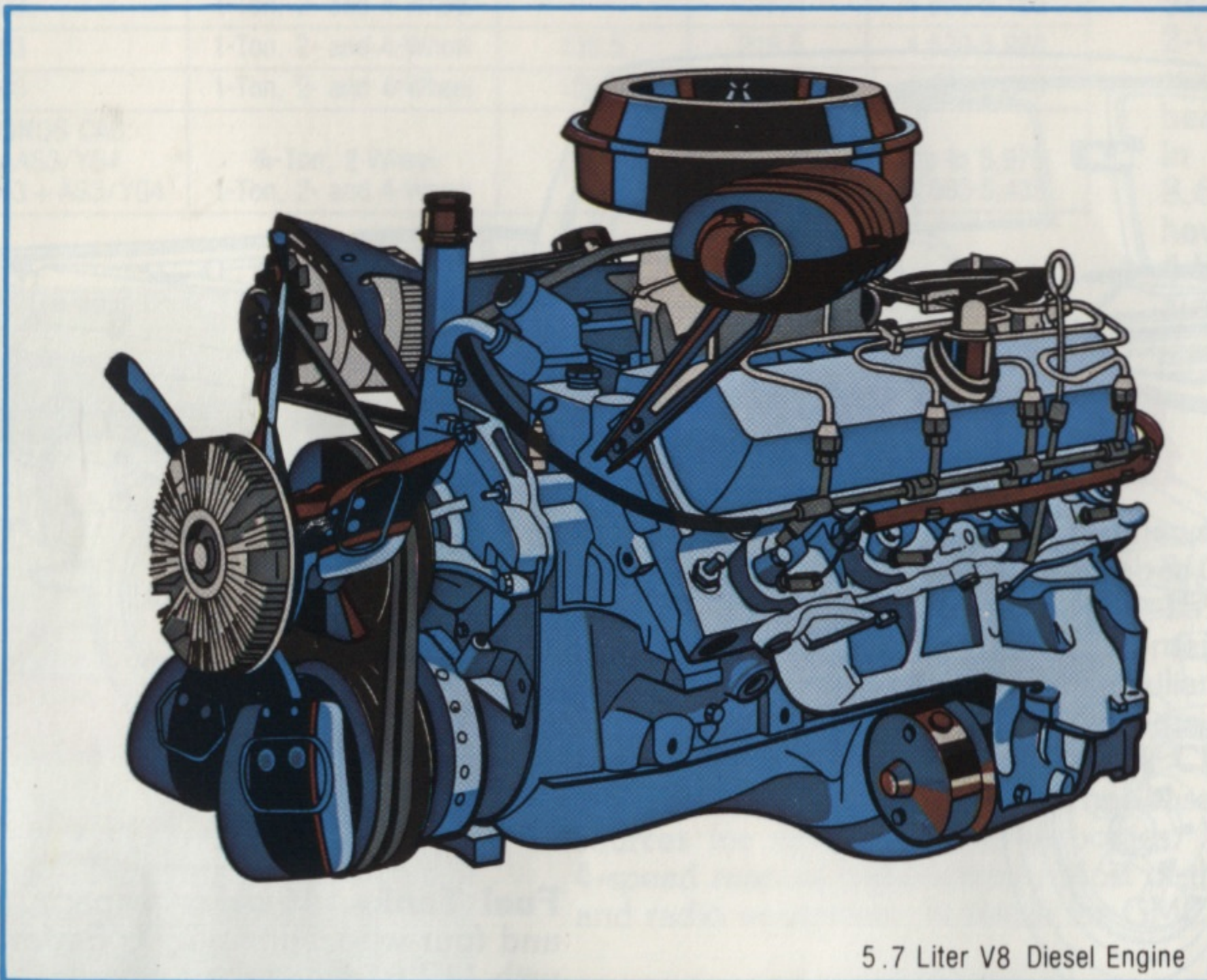
Fuel Tanks. 16-gallon capacity on two and four-wheel-drive 1500 Series models with 117.5" wheelbase. Standard tank for all other models is 20-gallon. New dual 16-gallon tanks are available on models under 8,600-lb. GVW. A 20-gallon auxiliary tank is available for models 8,600-lb. GVWR and over.

Mufflers feature double-wrapped shell and interior baffles of aluminized metal. With available 5.0 Liter V8 engine with Electronic Spark Control and 5.7 Liter engine in 4-WD models, single-inlet, dual-outlet mufflers (single-outlet in California), help reduce exhaust back pressure.

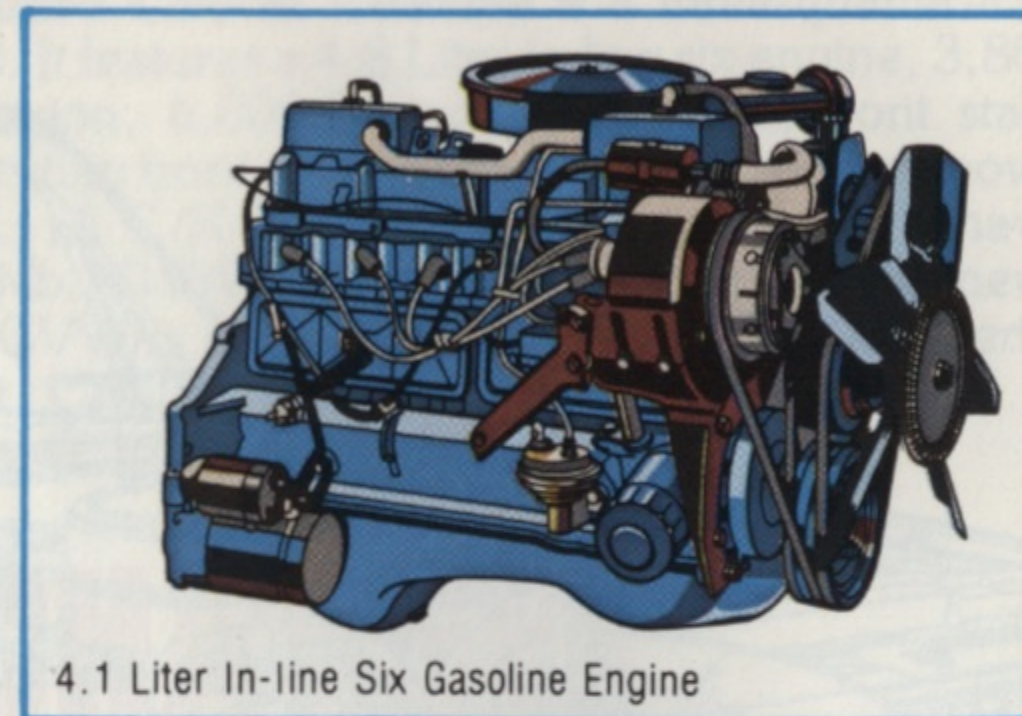
ANTI-CORROSION MEASURES

GMC Pickups receive extensive treatment to help maintain their good appearance, such as: **Special Metals.** Corrosion-resistant Zincrometal; zinc-plated steel; one-side- or two-side-galvanized steel; and zinc-iron alloy used for various parts of the front-end sheet metal, cab, doors, and cargo box. **Zinc-Rich Primer** is applied to some vulnerable areas. **Final Primer** is applied including doors and cargo box steel parts. **Acrylic Enamel** finish paint is baked on to help resist chipping. **An Aluminum Wax Preservative** is applied to certain lower areas of the cab assembly, such as inner and outer surfaces of the cowl and plenum panels, and door rocker panels. **Other Weatherproofing Procedures** include the use of special metal and coating for many nuts, bolts, and assemblies; rubber weather stripping around doors and windows; and a drainage system for the quick removal of water from some double-walled areas. There are also new front wheelhousing-to-frame seals for '81. Urethane stone shields forward of Wideside rear wheels help protect against minor stone chips.

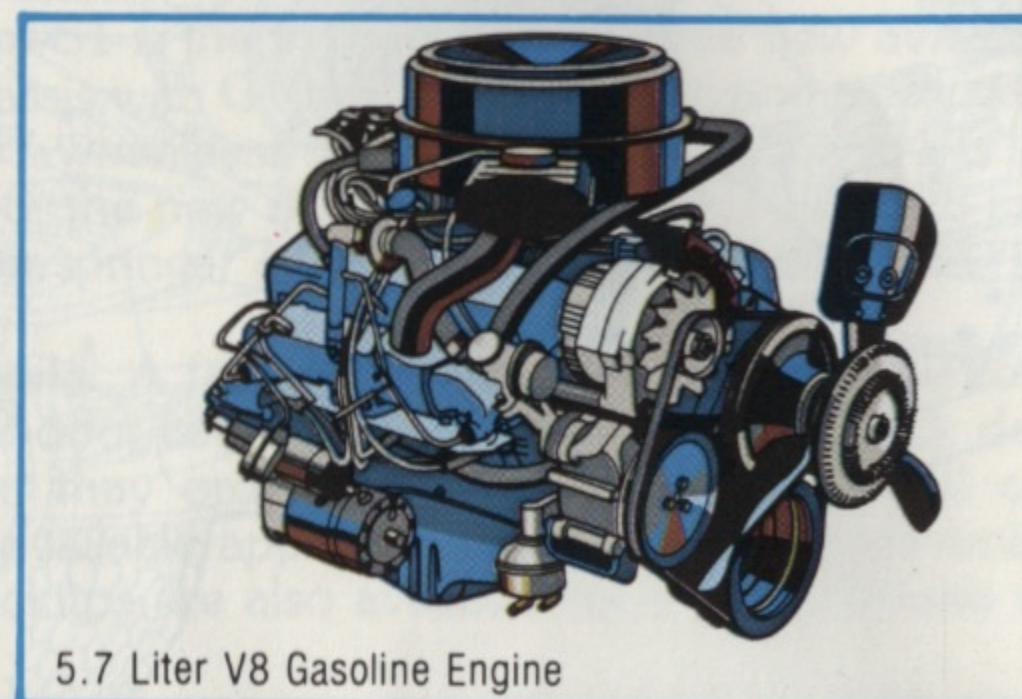
GASOLINE AND DIESEL ENGINES



5.7 Liter V8 Diesel Engine



4.1 Liter In-line Six Gasoline Engine



5.7 Liter V8 Gasoline Engine

GASOLINE ENGINES

4.1 LITER, 2-BBL., IN-LINE SIX—Standard engine for C/K-1500 and C-2500 Pickups under 8,600-lb. GVWR (not available in California for K-1500 or C-2500).

4.8 LITER, 1-BBL., IN-LINE SIX—Standard engine in 50 states for most models of 8,600-lb. and up GVWR.

NEW 5.0 LITER, 4-BBL., V8 WITH HIGH-COMPRESSION RATIO AND ELECTRONIC SPARK CONTROL—Develops 165 net horsepower @ 4400 RPM and 240 lb./ft. torque at 2000 RPM. Offers impressive performance because of its high, 9.2 to 1 compression ratio and new Electronic Spark Control to help control engine knock. Available for C/K-1500 and C-2500 under 8,600-lb. GVWR (not available in California).

5.0 LITER, 4-BBL., V8, CALIFORNIA ONLY—An available 305-cu.-in. engine for C-1500 Pickups in California only.

5.0 LITER, 2-BBL., V8—Short-stroke, valve-in-head design with Dualjet carburetor. Dependable V8 power available for C-1500 (not available in California).

7.4 LITER, 4-BBL., V8—A high-liter, high-horsepower and torque engine for big jobs and trailering. Available in C-2500 and C/K-3500 models with GVWR of 8,600 lbs. or more.

A WORD ABOUT ENGINES GMC Pickup trucks and GMC Cab & Chassis models are equipped with GM-built engines produced by various divisions. See your dealer for details. Please refer to charts at right.

DIESEL POWER AVAILABLE FOR 2-WD, HALF-TON PICKUPS

You may order half-ton, 2-WD Wideside or Fenderside Pickups with a 5.7 Liter V8 diesel engine. The diesel engine has no points, spark plugs, coil, condenser or carburetor.

Diesel models include: power brakes; automatic transmission; engine oil cooler; air cleaner; dual exhaust system (not available in California); two heavy-duty Delco Freedom batteries; 63-amp Delcotron generator; instrument cluster with heavy-duty lights; diesel identification plates on hood side and Wideside tailgate; engine block heater; heavy-duty front springs; hydraulic power steering; and 5,200-, 5,600-, or 6,100-lb. GVWR.

ENGINE TECHNICAL DATA

ENGINE WITH LIGHT-DUTY EMISSIONS FOR MODELS UNDER 8,600-LB. GVWR, ALL STATES EXCEPT CALIFORNIA

DISPLACEMENT	4.1 LITER, 2-BBL., L6*	5.0 LITER, 2-BBL., V8*	5.0 LITER, 4-BBL., V8 WITH ESC**	5.7 LITER, 4-BBL., V8*	5.7 LITER V8 DIESEL†
Engine Ordering Code	LE3	LG9	LE9	LS9	LF9
Bore & Stroke (In.)	3.9×3.5	3.74×3.48	3.74×3.48	4.0×3.5	4.06×3.38
Compression Ratio	8.3 to 1	8.5 to 1	9.2 to 1	8.2 to 1	22.5 to 1
SAE Net Horsepower @ RPM	115 @ 3600	130 @ 4000	165 @ 4400#	165 @ 3800	125 @ 3600
SAE Net Torque (Lb./Ft.) @ RPM	200 @ 2000	240 @ 2000	240 @ 2000#	275 @ 1600	225 @ 1600

*C-1500 only. K-1500 and C-2500 160 HP @ 4400 RPM, net torque 235 @ 2000

ENGINES WITH LIGHT-DUTY EMISSIONS FOR MODELS UNDER 8,600-LB. GVWR, FOR CALIFORNIA

DISPLACEMENT	4.1 LITER, 2-BBL., L6*	5.0 LITER, 4-BBL., V8*	5.7 LITER, 4-BBL., V8*	5.7 LITER V8 DIESEL†
Engine Ordering Code	LE3	LF3	LS9	LF9
Bore & Stroke (In.)	3.9×3.5	3.74×3.48	4.0×3.5	4.06×3.38
Compression Ratio	8.3 to 1	8.5 to 1	8.2 to 1	22.5 to 1
SAE Net Horsepower @ RPM	105 @ 3600	150 @ 4200	150 @ 3600	105 @ 3200
SAE Net Torque (Lb./Ft.) @ RPM	195 @ 1600	240 @ 2000	255 @ 1600	200 @ 1600

ENGINES WITH HEAVY-DUTY EMISSIONS FOR MODELS OF 8,600-LB. AND ABOVE, 50 STATES

DISPLACEMENT	4.8 LITER, 1-BBL., L6**	5.7 LITER, 4-BBL., V8*	7.4 LITER, 4-BBL., V8*
Engine Ordering Code	L25	LT9	LE8
Bore & Stroke (In.)	3.9×4.1	4.0×3.5	4.3×4.0
Compression Ratio	7.8 to 1	8.3 to 1	7.9 to 1
SAE Net Horsepower @ RPM	115 @ 3400	160 @ 3800‡	210 @ 3800
SAE Net Torque (Lb./Ft.) @ RPM	215 @ 1600	250 @ 2800‡	340 @ 2800

*Produced by GM, Chevrolet Motor Division
†Produced by GM, Oldsmobile Motor Division

**Produced by GM, GM de Mexico
‡California 155 @ 4000 RPM, torque 240 @ 2800 RPM

GMC PICKUPS AVAILABLE EQUIPMENT

Described here is some of the available comfort and convenience equipment you can add to your GMC. • All-Weather air conditioning includes 55-amp Delcotron with gasoline engines and increased cooling. • Electric clock with new solid-state quartz mechanism or tachometer. Option includes voltmeter, oil pressure gage, and temperature gage.

• Selection of available Delco radios: AM, AM/FM, AM/FM stereo, AM/FM stereo with 8-track tape, AM/FM stereo with stereo cassette tape, AM/FM/CB with manual tri-band antenna. Dual stereo front speakers are located under the instrument panel. • Cruise control includes new "resume speed" feature. Available for L6 or V8 engine with automatic transmission. • Power door locks and/or power windows. • Comfortilt steering wheel is available with 4-speed manual or automatic transmission. • Sliding rear window. • Mirrors: Below-eyeline, Camper, Senior West-Coast-type. • Glide-out spare tire carrier. • Cast aluminum wheels. • Rally wheels. • Styled wheels. • Styled aluminum wheels. • Power brakes. • Power steering. • Heavy-duty power brakes. • Camper Special chassis equipment. • Deluxe Camper Special chassis equipment. • Trailering Special Equipment. • Front stabilizer bar. • Camper wiring harness. • Platform-type trailer hitch. • Fuel tank shield (4-WD). • Dual exhaust system. • Deluxe front appearance. • Tinted window glass. • Painted, chromed, or deluxe chromed bumpers. • Front bumper guards. • Pickup box side rails. • Custom steering wheel. • Intermittent windshield wipers. • Cigarette lighter. • Visor mirror. • Color-keyed mats. • Rear axle locking differential. • Auxiliary and heavy-duty Freedom batteries. • Cold climate package. • Transmission oil and engine oil coolers. • Heavy-duty radiator cooling. • Front and rear



heavy-duty shock absorbers. • Front and rear heavy-duty springs. • Auxiliary fuel tanks. • Voltmeter, temperature and oil pressure gages. • 55- or 63-amp Delcotron.

GM CONTINUOUS PROTECTION PLAN

This option offers service protection in addition to that provided by GM's new vehicle limited warranty. Ask your dealer about it. (Available only in U.S.A. and Canada during the 1981 model year.)



Sierra Classic instrument panel.



Available tilt steering wheel.



Available aluminum wheel.

A WORD ABOUT ASSEMBLY, COMPONENTS AND OPTIONAL EQUIPMENT IN THESE GMC PRODUCTS

The GMC Pickups (Series C-1500, C-2500, C-3500, K-1500, K-2500, and K-3500) described in this brochure are assembled at facilities of General Motors Corporation operated by Chevrolet Motor Division, GM Assembly Division and GM of Canada. These vehicles incorporate thousands of different components produced by various divisions of General Motors and by various suppliers of General Motors. From time to time during the manufacturing process, it may be necessary, in order to meet public demand for particular vehicles or equipment, or to meet federally mandated emissions, safety and fuel economy requirements, or for other reasons, to produce GMC products with different components or differently sourced components than initially scheduled. All such components have been approved for use in GMC products and will provide the quality performance associated with the GMC name.

With respect to extra-cost optional equipment, make certain you specify the type of equipment you desire on your vehicle when ordering it from your dealer. Some options may be unavailable when your truck is built. Your dealer receives advice regarding current availability of options. You may ask the dealer for this information. GM also requests the dealer to advise you if an option you ordered is unavailable. We suggest you verify that your vehicle includes the optional equipment you ordered, or if there are changes that they are acceptable to you.

These vehicles are also available from Chevrolet dealers under the Chevrolet nameplate (Chevrolet Pickups and Chassis Cab Series C10, C20 and C30, K10, K20 and K30).

GMC PICKUP TECHNICAL INFORMATION

		2-WD								4-WD			
SERIES		C-1500 PICKUP	C-1500 DIESEL PICKUP	C-2500 PICKUP	C-2500/C6P PICKUP C-2500 CAB & CHASSIS		C-3500 PICKUP C-3500 CAB & CHASSIS		C-3500/C7C+ CAB & CHASSIS	K-1500 PICKUP	K-2500 PICKUP	K-2500/C6P PICKUP K-2500 CAB & CHASSIS	K-3500 PICKUP K-3500 CAB & CHASSIS
CAB TYPE		2-Door	2-Door	2-Door	2-Door	Bonus/Crew	2-Door	Bonus/Crew	2-Door and Bonus/Crew	2-Door	2-Door	2-Door	2-Door and Bonus/Crew
GVW RANGE, LBS.		4,900-6,100	5,200, 5,600, 6,100	6,400, 7,200	8,600		9,000-10,000 + @		10,500	6,100	6,600	8,600	9,200†, 10,000 + @
ENGINE, LITER	Std.	4.1 L6	5.7 V8	4.1 L6*	4.8 L6		4.8 L6		5.7 V8	4.1 L6*	5.7 V8	4.8 L6	4.8 L6
	Avail.	5.0 V8, 2-Bbl.* 5.0, 4-Bbl. W/ESC* 5.0, 4-Bbl.**	— —	5.0 V8* 4-Bbl.* W/ESC 5.7 V8**	5.7 V8 7.4 V8		5.7 V8 7.4 V8		7.4 V8	5.0 V8, 4-Bbl.* W/ESC 5.7 V8**	—	5.7 V8	5.7 V8 7.4 V8
CLUTCH, DIA., IN.	Std.	11	—	11	11		11		12	11	12	11	11
FRONT SUSPENSION	Type	Independent Coil Springs		Independent Coil Springs		Independent Coil Springs			Salisbury, Hypoid-Drive, 1-Stage Multileaf Springs				
SPRINGS, FRONT	Cap., Lbs.	2,950	3,400	3,800	3,800		3,800	4,000	4,000	3,600	3,800	3,800	4,500
	Std.	1,475	1,700	1,750	1,900		1,900	2,000	2,000	1,850	1,850	1,850	2,250
	Avail.	1,625	—	1,900	—		—		—	2,250	2,250	2,250	—
SHOCK ABSORBERS, FRONT/REAR	Std.	25-mm	25-mm	25-mm	32-mm		25-/32-mm (1) 32-/32-mm (2)		32-mm	25-mm	25-mm	32-mm	25-mm
	Avail.	32-mm	32-mm	32-mm	—		32-mm Fr. (1)		—	—	—	—	32-mm
FRONT STABILIZER BAR		Available	Available	Available	Standard		Available		Available	Standard	Standard	Standard	Standard
REAR SUSPENSION	Axle Type	Semifloating	Full-Floating	Semifloating	Semifloating		Full-Floating		Full-Floating	Semifloating	Semifloating	Semifloating	Full-Floating
SPRINGS, REAR	Cap., Lbs.	3,750	3,750	6,000	6,000		7,500		7,500	3,750	6,000	6,000	7,500
	Std.	1,550	1,550	2,000	3,000		3,500		3,750	1,850	2,000	3,000	3,500
	Avail.	1,750 2,000	1,750 2,000	2,550 3,000	—		3,750		—	—	—	—	3,750#
BRAKES, DISC/DRUM	Std.	Man. Hydraulic	Hyd. Power	Hyd. Power	H.D. Vac. Power (1) Hydraulic Power (2)	Hyd. Power	H.D. Hydraulic Power (1) Hydraulic Power (2)		Hyd. Power	Hyd. Power	Hyd. Power	Hyd. Power	Hyd. Power
	Avail.	Vac. Power H.D. Vac. Pwr.	H.D. Hyd. Power	H.D. Vac. Pwr.	—		—		—	—	H.D. Vac. Power	H.D. Vac. Power (1)	—
STEERING	Std.	Manual	Power	Manual	Manual		Manual		Manual	Power	Power	Power	Power
	Avail.	Power	—	Power	Power		Power		Power	—	—	—	—
TRANSMISSION	Std.	3-Spd. Man.	Automatic	3-Spd. Man.*	4-Spd. Man.		4-Spd. Man.		4-Spd. Man.	3-Spd. Man.*	3-Spd. Man.*	4-Spd. Man.	4-Spd. Man.
	Avail.	4-Spd. Man.* Automatic	—	4-Spd. Man.* Automatic	Automatic		Automatic		Automatic	4-Spd. Man.* Automatic	4-Spd. Man.* Automatic	Automatic	Automatic
TIRES, RADIAL	Std.	FR78-15B	P205/75R15	8.75R-16.5C	9.50-16.5D (F) 9.50-16.5E (R) 8.75R-16.5C		9.50-16.5D (F) 9.50-16.5E (R)	9.50-16.5E (E)	7.50-16C 7.50-16C (F)(3) 7.50-16D (R)(3)	P235/75R15	8.75R-16.5C	9.50-16.5D (F) 9.50-16.5E (R)	9.50-16.5D (F) 9.50-16.5E (R) 8.75-16.5D#
	Avail.	Larger Size Tube and Tubeless Tires			Larger Size Tube and Tubeless Tires		Larger Size Tube and Tubeless Tires			Large Size Tube and Tubeless Tires			

(1) Pickup
(2) Cab & Chassis
(3) Standard on Dual-Rear-Wheel 164.5" WB Bonus/Crew

*Not available in California
**California only
Standard on dual-rear-wheel 159.5" WB Cab & Chassis

+ Dual rear wheels
@ Not available on 131.5" WB Cab & Chassis
† Not available on 159.5" WB Cab & Chassis

PAINT OPTIONS (WIDESIDE MODELS)

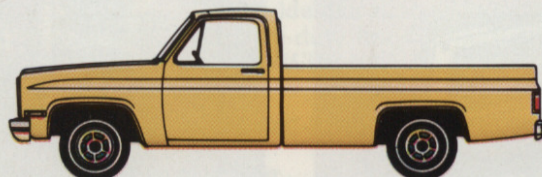
Standard solid-color scheme offers a choice of 11 carryover and four new colors: Slate Metallic, Dark Slate Metallic, Dark Chestnut Metallic, and Yellow.

Conventional two-tone scheme with secondary color applied on roof and cab back panel; includes cab back panel belt line moldings.

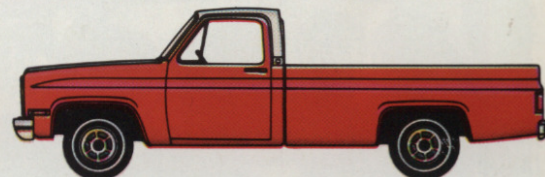
Special two-tone scheme; secondary color is applied below moldings. Includes new body molding (molding included with Sierra Classic trim).

Deluxe two-tone scheme applies secondary color to roof, cab back panel to belt line and below moldings (molding included with Sierra Classic trim).

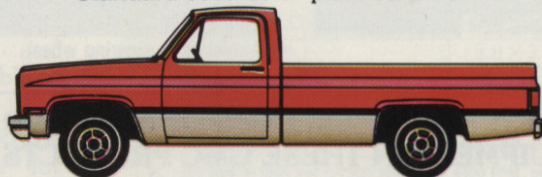
Exterior Decor Package includes the new body moldings (moldings included with Sierra Classic trim) and dual-tone body side and rear tape decal striping keyed to body color. Two-tone paint and standard hood ornament are also included.



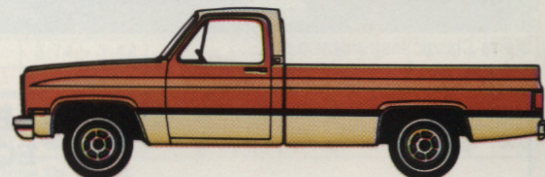
Standard solid-color paint scheme



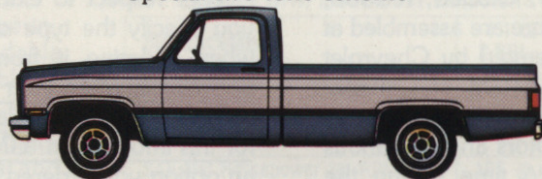
Conventional two-tone scheme



Special two-tone scheme



Deluxe two-tone paint scheme



Exterior Decor Package



Trucks are what we're all about.

GMC TRUCK & COACH DIVISION
GENERAL MOTORS CORPORATION
PONTIAC, MICHIGAN 48053