

2008 MUSTANG





Mustang V6 Coupe

Shelby GT500

Mustang GT Convertible



“Highest Ranked Midsize Sporty Car in Initial Quality by J.D. Power and Associates.”

“When it first debuted in 1964, the Mustang spawned a new class of cars called pony cars – a segment Mustang has led ever since...”

— jdpower.com

*Ford Mustang received the lowest number of problems per 100 vehicles among midsize sporty cars in the proprietary J.D. Power and Associates 2007 Initial Quality Study™ (IQS). Study based on responses from 37,390 new-vehicle owners, measuring 250 models and measures opinions after 90 days of ownership. Proprietary study results are based on experiences and perceptions of owners surveyed in February-May 2007. Your experiences may vary. Visit jdpower.com.



“The Mustang turns crisply and eagerly into corners with a flat, composed attitude.”

— Edmunds.com

◀ Aluminum pedal covers, optional
Z-rated performance tires on GT ▶

start salivating

bites when cornered

A Steed For Every Need

- ▶ 210-hp Mustang V6
- ▶ 300-hp Mustang GT
- ▶ 500-hp Shelby GT500

Legendary performance matches legendary looks. Making Mustang the best-selling sports car in America. Tons of personalization options fuel that passion. Meaning Mustang enthusiasts can customize their trusty steed – be it a coupe or convertible – to their every desire. Flex your muscle in Mustang: America's pony car.



Mustang Handling

Mustang touts a finely honed, race-inspired unitized architecture to match its aggressive rake. While output is taken to the extreme on the Shelby GT500 from SVT¹, it shares underpinning fundamentals with its stablemates. On Mustang GT and V6:

- ▶ MacPherson coil-over-strut front suspension
 - ▶ Custom shock valving
 - ▶ Extra-strong reverse “L” lower control arms
- ▶ 3-link, solid-axle rear suspension
 - ▶ Outboard-mounted shocks
 - ▶ Panhard rod

¹Ford Special Vehicle Team (SVT).



Mustang V6 Coupe

No matter the style of 'Stang, you'll never miss a performance beat. The 4.0L V6 cranks out a rousing 210 hp and 240 lb.-ft. of low-end torque. Bonus: Every coupe earned the government's highest frontal crash test and rollover resistance ratings – 5 Stars from NHTSA! You also get this on Mustang V6 Deluxe:

- ▶ 16" bright machined-aluminum wheels
- ▶ Power windows, locks, brakes and steering
- ▶ 2 power points and 50/50 split-folding rear seat*
- ▶ 4-speaker, 160-watt audio system and CD player
- ▶ Front-seat side airbags and dual-stage front airbags



Since you can't get enough of "Mustang," it's repeated again and again on the 2+2 seating decked out in Light Graphite cloth, the inside's also enhanced with the optional Interior Upgrade Package and its many satin-aluminum touches.

*National Highway Traffic Safety Administration, 2007 model year rating. *Coupe only.

get in and gun it



“First Place: The Quickest Cars of 2007: Less Than \$20,000: Mustang V6. Fitted with the five-speed manual, this Mustang posts an astounding 6.5-second dash to 60 mph, and even the automatic is only four 10ths behind.”
— CARandDRIVER.com April 2007

- ◀ 18" premium polished forged-aluminum wheels, optional Stainless steel exhaust and 4-wheel disc brakes ▶



Mustang V6 Convertible

Mustang was designed to convey true solidity with its top down. Joints and rocker panels are as firm as those on the coupe. The Z-fold ragtop boasts a 3-layer build – waterproofed outside, eye-pleasing inside and sound-deadened in between. You also get this on Mustang V6 Premium:

- ▶ 16" bright machined-aluminum wheels with chrome spinners
- ▶ 6-way power driver seat with power lumbar
- ▶ 8-speaker, 500-watt Shaker 500 Audio System
- ▶ 6-disc in-dash CD changer and MP3 audio input jack
- ▶ Tire Pressure Monitoring System



sizzlin' suncatcher

“It's as genuine as the '64½ original. And with its throwback charm and modern mechanics, we doubt anyone can resist this American-metal meets the sky icon, and we're not gonna try!”
— MotorWeek

- ◀ Automatic transmission, optional
Top powers down in 13 seconds ▶



fordvehicles.com



fordvehicles.com

Mustang GT Convertible

Mustang GT takes to the sky as eagerly as the heroic WWII P-51 Mustang fighter plane. In a GT convertible, you're bound to run a little faster for a little longer, soaking up extra sunshine and envious stares. All the more reason why so much time was spent perfecting the whole mean machine. You get this on Mustang GT Premium:

- ▶ Power top with glass rear window and defroster
- ▶ Leather-trimmed sport buckets (available heated¹)
- ▶ 8-speaker, 500-watt Shaker 500 Audio System
- ▶ 6-disc in-dash CD changer and MP3 audio input jack
- ▶ Front-seat side airbags and dual-stage front airbags

¹Heated driver and front-passenger seats optional.



The vibrant Chamois leather seating is part of the optional Premier Trim With Color Accent Package, which includes stitched, soft-touch detailing. Woven Charcoal aluminum IP accents are available on the Interior Upgrade Package.

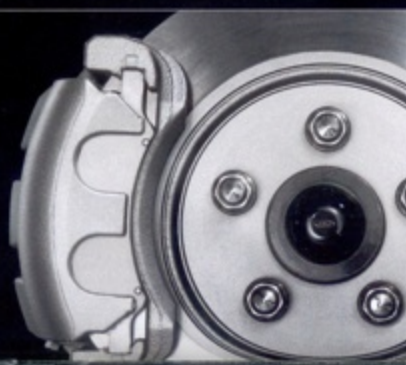
how to top a GT coupe



“Stoplight to stoplight, the GT convertible has got game — runs with some cars costing twice as much.”

— MotorTrend.com

- ◀ 18" polished wheels, optional
- 4-wheel disc ABS ▶



Mustang GT Packages

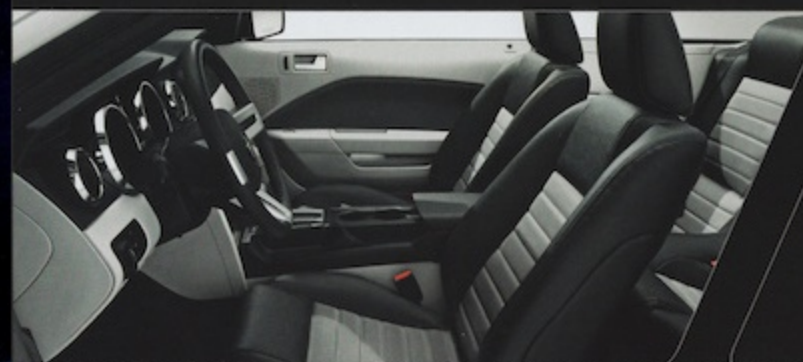
Paying tribute to the highly prized '68 GT California Special (GT/CS), today's mod GT/CS option flaunts a front fascia with a prominent air intake and low chin spoiler. The rear fascia integrates a race-worthy diffuser. You also get this with the California Special Package:

- ▶ Side scoops and mid-body GT/CS stripes
- ▶ 18" polished-aluminum wheels
- ▶ Bright rolled exhaust tips

The GT/CS poised here wields the optional GT Appearance Package's awesome hood scoop.



california dreamin'



“If bona fide American grunt in relative comfort is your thing, you'd be hard pressed to find a better mistress than this latest Mustang derivative.”

— Jalopnik.com

- ◀ California Special two-tone seating
- California Special rear badging ▶



fordvehicles.com



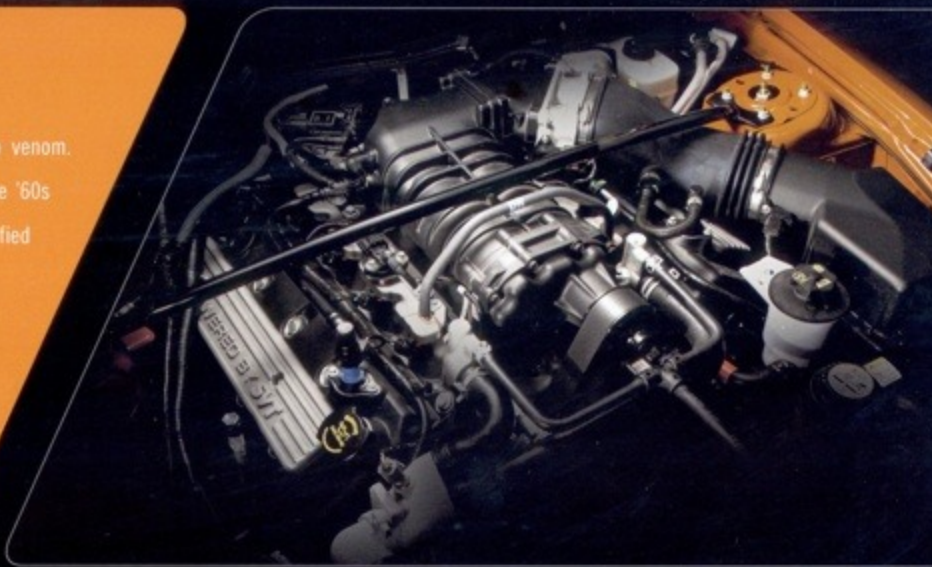
fordvehicles.com



Shelby GT500

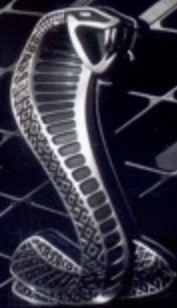
The hypnotizing Shelby GT500 injects 480 lb.-ft. of torque to its lethal 500-hp venom. Performance guru Carroll Shelby and Ford SVT conjured this spellbinding take on the '60s original. The mind-blowing V8 is supercharged, water-to-air intercooled, and fortified with 4-valve aluminum heads and a steel crankshaft. More modifications include:

- ▶ Heritage-cued fascias, spoiler and Le Mans racing stripes
- ▶ Power dome hood with twin heat extractors
- ▶ 6-speed manual and tuck-and-roll leather seat inserts
- ▶ X-pipe pressure-wave exhaust tuning
- ▶ Goodyear® F1 Supercar tires on 9.5"-wide wheels
- ▶ Brembo® 14" front rotors and 4-piston calipers



AUTOMOBILE Magazine gazed at the engine bay and gushed: "... one howling supercharger, four whirring camshafts, thirty-two valves, and 5.4 liters of ripping V8 are jammed beneath the Shelby's humped-up aluminum hood."

spits a mean 500 horses



"One fundamental muscle car requirement is looking hot with the hood open or closed. Here, the Shelby GT500 sets new standards."
— AUTOMOBILE Magazine (automobilemag.com)

◀ "... makes Chevy and Dodge fans purple with envy."
Premium Interior Trim Package, optional ▶



fordvehicles.com



fordvehicles.com



"... it's easy to use, and it can brighten your day, and especially your night, as you drive. We're all for that."
— NewCarTestDrive.com

◀ MyColor™ lighting, optional
Ambient lighting, optional ▶



light 'em up

Mustang Flash

Everything inside exudes a powerful allure, from the chrome-ringed, double-barrel performance gauges to the available T-handled automatic shifter or beefy manual knob. Even the flush-mounted audio and climate controls have strong character. Add optional lighting special effects — that you can change on the fly — and you're in for a real treat:

- ▶ Ambient lighting is variable in 7 different hues
 - ▶ Illuminate all 4 footwells
 - ▶ Illuminate the front cupholders
- ▶ MyColor™ lighting¹ is variable in 125 different hues
 - ▶ Set instrument illumination as you like

¹Part of the optional Interior Upgrade Package.





ALL-WEATHER VINYL FLOOR MATS



METALLIC FUEL FILLER DOOR



REMOTE START



CAR COVER



Genuine Ford Accessories

Engineered by Ford for excellent fit and long-wearing durability, Genuine Ford Accessories offer you serious style and quality. When installed by your Ford Dealer at the time of purchase or lease, they're backed by a 3-year/36,000-mile limited warranty.* And now, Ford's vehicle Accessorizer puts personalization in the fast lane. This exciting new online tool lets you see how Genuine Ford Accessories will look on your Mustang. Take it for a test drive at fordaccessoriesstore.com.

12-month/12,000-mile limited warranty if Genuine Ford Accessories are not installed by a Ford Dealer or are purchased after initial vehicle sale or lease. See your dealer for details.



fordaccessoriesstore.com

Ford Racing High Performance Driving School at Miller Motorsports Park ▶
Mustang FR500C – 2007 Daytona Grand-Am winner (far right) ▶



Ken Gushi's 700-hp Mustang GT

fordracingparts.com

SIRIUS

SATELLITE RADIO
THE BEST RADIO ON RADIO™

“The thundering in-dash, 6-CD Shaker 500 audio is powerfully balanced and can hammer out the hardest rock.”
—*Road & Track* (roadandtrack.com) May 2007

▶ Over 130 digital-quality channels, optional MP3 input jack links to killer audio unit ▶



get pumped

Mustang Noise (& Nav)

The boomin' club scene – deep bass, crisp highs and full, balanced mid-range – captured in a car. Every sound blarin' out of Mustang takes on a whole new dimension. Available audio:

- ▶ **Mustang-exclusive Shaker 500 with 8 speakers**
 - ▶ 2 door-mounted subwoofers
 - ▶ 6-disc in-dash CD changer
- ▶ **Mustang-exclusive Shaker 1000 with 10 Audiophile® speakers**
 - ▶ 4 subwoofers (dual 500-watt thumpers in trunk)
 - ▶ 6-disc in-dash CD changer
- ▶ **SIRIUS Satellite Radio²** (complete details at sirius.com)
 - ▶ Sports, news, talk and 100% commercial-free music
 - ▶ Complimentary online access when you subscribe

*Service not available in Alaska or Hawaii. See your Ford Dealer or contact SIRIUS at 1-888-535-7474 for more information.

Mustang has been a major player in the performance world straight out of the gate: A month after its April '64 debut, it served as the Official Pace Car of the Indy 500. Now, Mustang competes in Formula Drift®, Grand-Am Koni Challenge and Rolex GT Series, National Hot Rod Association (NHRA) Funny Car, and the Sports Car Club of America (SCCA) circuit. Pit it at fordracing.com for latest race results.

▶ Ashley Force and John Force
Team Force 8000-hp Mustang Funny Car ▶



smoke all comers

Ford Racing Parts

Surgeon General's warning be damned. Ford Racing offers street-legal performance packs for your Mustang V6, Mustang GT and Shelby GT500 that can be installed by your Ford Dealer. When dealer-installed, these packs and parts are now backed by a Ford Racing Limited Warranty! All parts are designed by Ford Racing engineers to work together as turnkey performance-enhancing packages.

*Limited Warranty available when Ford Dealer installed only. Phone 1-800-FORD-788 and go to fordracingparts.com for complete details.



Performance Packs & Parts Now With Limited Warranty

HANDLING PACKS FOR V6, GT & GT500 (3-year/36,000-mile Limited Warranty!)

- ▶ Uniquely tuned dampers, lower/stiffer springs, anti-roll bars and urethane bushings
- ▶ Ford Racing strut-tower brace

POWER UPGRADE PACKAGES FOR V6, GT & GT500 (3-year/36,000-mile Limited Warranty!)

- ▶ Cold Air Kit with larger mass airflow sensor housing
- ▶ Ford Racing performance calibration
- ▶ Tuned mufflers

SUPER PACKS FOR GT & GT500 (12-month/12,000-mile Limited Warranty!)

- ▶ GT – 400 HP Supercharger Kit
- ▶ GT – 500 HP Supercharger Kit (not available with Limited Warranty)
- ▶ GT500 – 600 HP Supercharger Kit

MORE PERFORMANCE ENHANCEMENTS (3-year/36,000-mile Limited Warranty!)

- ▶ Stainless steel exhaust X-pipe
- ▶ Short-throw shifter

DVD-based Navigation System: This option arms you with a 6.5" LCD screen that displays sharp color graphics, plus step-by-step touch-screen prompts and a turn-by-turn Route Guidance voice.

Shelby GT500 specs

MECHANICAL
5.4L supercharged, intercooled DOHC V8 engine • 500 hp @ 6000 rpm and 480 lb.-ft. of torque @ 4500 rpm • 9.0 psi boost • Forged-steel crankshaft • Forged-steel I-Beam connecting rods • 6-speed manual transmission • Dual 60-mm electronic throttle body • 4-channel ABS brakes with traction control system • Modified 8.8" live axle with 3.31:1 gear ratio • Brembo® 14" vented front rotors and 4-piston calipers • 11.8" vented rear rotors with 2-piston calipers • SVT-tuned suspension with unique shocks and springs • Tuned stainless steel X-pipe exhaust • P255/45ZR18 front F1 Supercar tires • P285/40ZR18 rear F1 Supercar tires • 18" x 9.5" bright machined-aluminum wheels with SVT center caps

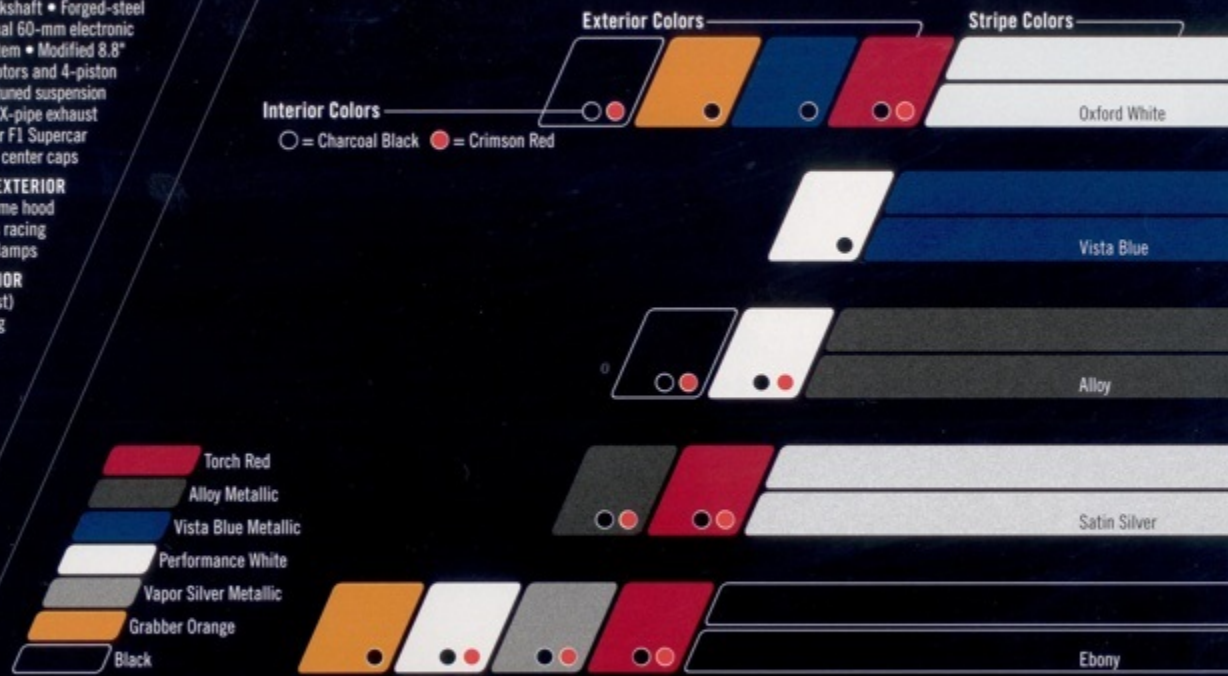
EXTERIOR
Premium cloth convertible top (convertible only) • Power dome hood with twin heat extractors • Unique rear spoiler • Le Mans racing stripes (coupe only) • GT500 side rocker stripes • Front fog lamps

INTERIOR
Shaker 500 Audio System • 6-gauge cluster (including boost) with MyColor™ and unique red, white & blue illumination setting • Charcoal Black leather-trimmed front bucket seats with Cobra logo (Charcoal Black or Crimson Red inserts) • Unique leather-trimmed steering wheel with Red stitching

SAFETY/SECURITY
Front airbags and front-seat side airbags • Active Anti-Theft System

OPTIONS
Shaker 1000 Audio System • SIRIUS Satellite Radio • GT500 Premium Interior Trim Package – Includes wrapped and stitched instrument panel brow and center console, upgraded door armrests, auto-dimming rearview mirror with compass, and aluminum pedal covers • Stripe delete preferences • Ambient lighting • DVD-based Navigation System (not available with Shaker 1000) • HID headlamps

PAINT/TRIM/STRIPE COMBOS



V6/GT specs



Mustang V6

DELUXE

select standard content:

4.0L SOHC V6 engine • 5-speed manual transmission (3.31 axle ratio) • Compact spare tire • Front stabilizer bar • Stainless steel single exhaust • Power 4-wheel disc brakes • Power rack-and-pinion steering • Coil-over-strut front suspension • Coil spring 3-link, solid-axle rear suspension • Personal Safety System® • Front-seat side airbags • 4-way manual height-adjustable driver seat • 50/50 split-folding rear seat (coupe only) • Carpeted front floor mats • Tilt steering wheel • Cruise control • Full center console with armrest and storage • Power door locks and windows with one-touch-up/down feature • Remote keyless illuminated entry • Air conditioning • AM/FM single-CD audio system • Vinyl top (convertible only) • 16" bright machined-aluminum wheels • P215/65R16 all-season tires • Tire Pressure Monitoring System

PREMIUM

includes V6 Deluxe content, plus:

Shaker 500 Audio System with 6-disc in-dash CD changer, 8 speakers and MP3 capability • 6-way power driver seat with power lumbar • 16" bright machined-aluminum wheels with chrome spinners



Mustang GT

DELUXE

includes V6 Deluxe content, plus:

4.6L SOHC 3-valve V8 engine • 5-speed manual GT transmission (3.31 axle ratio) • Stainless steel dual exhaust with bright tips • Power 4-wheel disc Anti-lock Brake System (ABS) • Front and rear stabilizer bars • Traction Control • Fog lamps • Rear spoiler • 6-way power driver seat with power lumbar • 17" painted-aluminum wheels • P235/55ZR17 all-season performance tires

PREMIUM

includes GT Deluxe content, plus:

Shaker 500 Audio System with 6-disc in-dash CD changer, 8 speakers and MP3 capability • Leather-trimmed sport bucket seats

STANDARD INTERIOR¹



V6 CLOTH
MUSTANG Pattern

V6 LEATHER TRIM

OPTIONAL INTERIOR UPGRADE PACKAGE¹



GT CLOTH
Stampeding Horse Pattern

GT LEATHER TRIM



FEATURES & OPTIONS

	V6 DELUXE	V6 PREMIUM	GT DELUXE	GT PREMIUM
MECHANICAL				
4.0L SOHC V6 engine	●	●	○	○
4.6L SOHC 3-valve V8 engine	○	○	●	●
5-speed manual GT transmission	○	○	●	●
5-speed automatic transmission	○	○	○	○
Limited-slip differential	○	○	○	○
3.55 axle ratio (manual transmission only)	○	○	○	○
16" bright machined-aluminum wheels	○	○	○	○
16" bright machined-aluminum wheels with chrome spinners	○	○	○	○
17" painted-aluminum wheels	○	○	○	○
17" bright machined-aluminum wheels (split-spoke)	○	○	○	○
18" premium aluminum wheels	○	○	○	○
18" polished-aluminum wheels	○	○	○	○
18" premium polished forged-aluminum wheels (coupe only)	○	○	○	○
P215/65R16 all-season tires	○	○	○	○
P235/55ZR17 all-season performance tires	○	○	○	○
P235/50ZR18 performance tires	○	○	○	○
Stainless steel single exhaust	○	○	○	○
Stainless steel dual exhaust with bright tips	○	○	○	○
SAFETY/SECURITY				
Active Anti-Theft System	○	○	○	○
Anti-lock Brake System (ABS) and Traction Control	○	○	○	○
HID headlamps (requires V6 Safety and Security Package on V6; requires Active Anti-Theft System on GT)	○	○	○	○
Wheel-lock kit	○	○	○	○
SEATING				
6-way power driver seat with power lumbar	○	○	○	○
Heated driver and front-passenger seats (requires leather trim)	○	○	○	○
Leather-trimmed bucket seats	○	○	○	○
Leather-trimmed sport bucket seats (V6 requires Interior Upgrade Package and Premier Trim With Color Accent Package)	○	○	○	○
Ambient lighting	○	○	○	○
AUDIO				
AM/FM audio system with single-CD player and 4 speakers (160-watt)	○	○	○	○
Shaker 500 Audio System with AM/FM stereo, 6-disc in-dash CD changer, 8 speakers and MP3 capability (500-watt)	○	○	○	○
Shaker 1000 Audio System with AM/FM stereo, 6-disc in-dash CD changer, 10 Audiophile® speakers and MP3 capability (1000-watt) (requires V6 Safety and Security Package)	○	○	○	○
SIRIUS Satellite Radio (requires Shaker 500 or Shaker 1000 Audio System)	○	○	○	○
Touch-screen DVD-based Navigation System (requires V6 Safety and Security Package and Shaker 500 Audio System)	○	○	○	○
EXTERIOR				
Cloth convertible top (convertible only)	○	○	○	○
Convertible top soft boot (convertible only)	○	○	○	○
Fog lamps	○	○	○	○
Rear spoiler	○	○	○	○
Spoiler delete option	○	○	○	○

	V6 DELUXE	V6 PREMIUM	GT DELUXE	GT PREMIUM
PACKAGES				
Exterior Sport Appearance Package – Includes rear spoiler and lower bodyside sport tape stripe in White, Black or Pearl Gold	○	○	○	○
Sport Interior Appearance Package – Includes leather-wrapped steering wheel with satin-aluminum spokes, aluminum pedal covers, unique shifter, Graphite & Parchment interior with Dark Charcoal seats and interior trim	○	○	○	○
Interior Upgrade Package – Includes leather-wrapped steering wheel with satin-aluminum spokes, satin-aluminum-plated shift lever (automatic) or bright polished shift knob (manual), bright polished register rings, satin-aluminum-plated door handles, bright polished 6-gauge cluster with MyColor™ message center, satin-aluminum door sill scuff plates with bright MUSTANG lettering (requires either satin-aluminum or woven Charcoal aluminum instrument panel appliques)	○	○	○	○
Premier Trim With Color Accent Package – Includes wrapped and stitched instrument panel brow, console lid and upgraded door armrests, satin-aluminum-plated shift lever (automatic) or bright polished shift knob (manual), aluminum pedal covers, leather-trimmed sport bucket front and rear seats, matching door-trim inserts and floor mats, and your choice of 5 interior color combinations (requires Interior Upgrade Package)	○	○	○	○
Comfort Package – Includes heated driver and front-passenger seats, 6-way power front-passenger seat and auto-dimming rearview mirror with compass (requires leather-trimmed seats and power driver seat)	○	○	○	○
V6 Warriors In Pink – Includes pink ribbon and Pony fender badge, pink MUSTANG rocker tape stripe, Charcoal leather-trimmed seats with pink contrast stitching, Charcoal floor mats with pink ribbon and pink contrast stitching, aluminum spoke steering wheel with pink contrast stitching, 17" painted cast-aluminum wheels, rear spoiler, unique Pony grille with chrome bezel and fog lamps, and lower door stripe available in pink, and available only in Performance White, Black or Silver Metallic exterior colors (requires automatic transmission; sales from this package help raise funds for Susan G. Komen for the Cure)	○	○	○	○
V6 Pony Package – Includes Pony grille with integrated fog lamps, Pony fender badges, lower bodyside MUSTANG stripe, rear spoiler, floor mats with chrome badging and 17" painted-aluminum wheels with tri-bar Pony center caps	○	○	○	○
V6 Safety and Security Package – Includes Anti-lock Brake System with Traction Control, Active Anti-Theft System and wheel-lock kit	○	○	○	○
GT Appearance Package – Includes hood scoop, Pony emblem engine cover and bright rolled exhaust tips	○	○	○	○
GT California Special Package – Includes Dark Charcoal leather-trimmed seats with Dove or Parchment inserts, unique front and rear fascias, side scoops, bright rolled exhaust tips, floor mats with bright badging, mid-body GT/CS stripes and 18" polished-aluminum wheels	○	○	○	○
Tape stripe delete option (Exterior Sport and Pony packages)	○	○	○	○

● Standard ○ Optional — Not Available

ENGINES

	4.0L SOHC V6	4.6L 3-VALVE V8
Horsepower (hp @ rpm)	210 @ 5300	300 @ 5750
Torque (lb.-ft. @ rpm)	240 @ 3500	320 @ 4500

2008 EPA-ESTIMATED FUEL ECONOMY

	4.0L SOHC V6	4.6L 3-VALVE V8
Manual transmission	17 mpg city/26 hwy.	15 mpg city/23 hwy.
Automatic transmission	16 mpg city/24 hwy.	15 mpg city/22 hwy.

¹Shown with optional automatic transmission. ©2007 SIRIUS Satellite Radio Inc. "SIRIUS," the SIRIUS dog logo and "The Best Radio on Radio" are registered trademarks of SIRIUS Satellite Radio Inc. Audiophile is a registered trademark of Audiophile, Inc.

V6/GT tops & stripes

CONVERTIBLE TOP COLORS

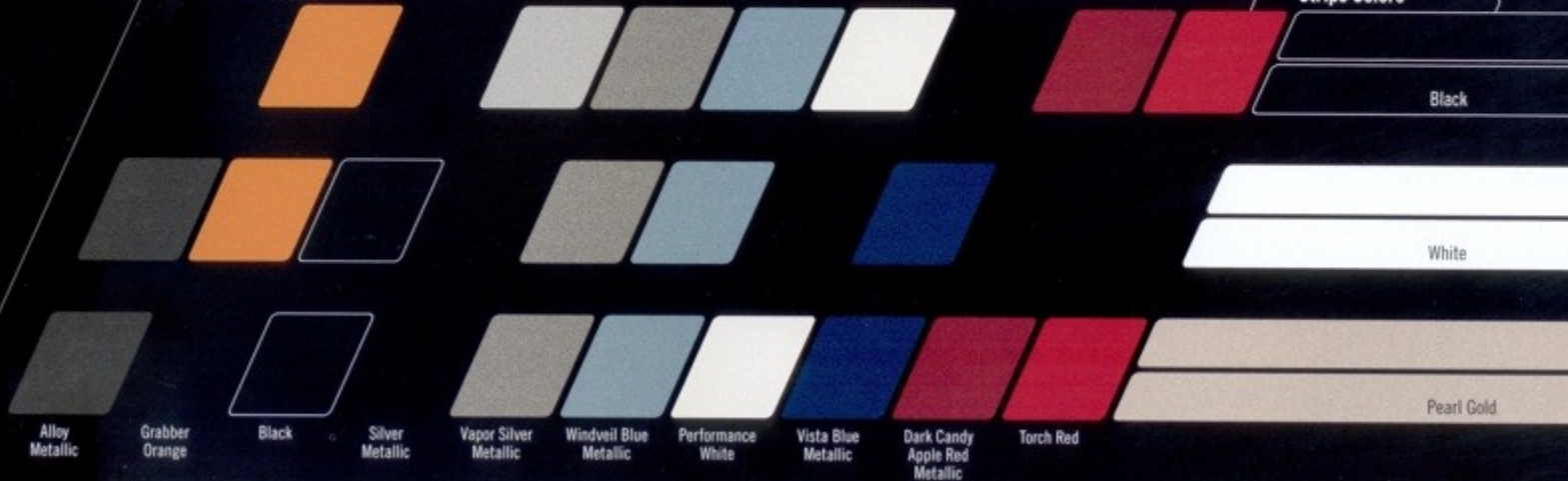


Black (vinyl or optional cloth)

Parchment (vinyl)

PAINT/STRIPE COMBOS

Exterior Colors



Stripe Colors

Black

White

Pearl Gold



Windveil Blue Metallic

Performance White

Silver Metallic

Dark Candy Apple Red Metallic

Alloy Metallic

V6/GT colors

PAINT/TRIM/TOP COMBOS

MEDIUM PARCHMENT	
•	LIGHT GRAPHITE
•	DARK CHARCOAL
•	PARCHMENT INTERIOR WITH DARK CHARCOAL SEATS
•	DOVE INTERIOR WITH DARK CHARCOAL SEATS
•	DARK CHARCOAL INTERIOR WITH RED SEATS
•	DARK CHARCOAL INTERIOR WITH CHAMOIS SEATS
•	DARK CHARCOAL INTERIOR WITH DARK CHARCOAL SEATS
EXTERIOR COLORS	
•	Performance White
•	Grabber Orange
•	Torch Red
•	Dark Candy Apple Red Metallic
•	Alloy Metallic
•	Windveil Blue Metallic
•	Vista Blue Metallic
•	Silver Metallic
•	Vapor Silver Metallic
•	Black
CONVERTIBLE TOP COLORS	
•	Parchment
•	Black ¹

¹Black top not available when Medium Parchment interior is combined with Vista Blue Metallic exterior. Ford uses clearcoat paint for beauty and protection. Colors shown are representative only. Not all colors are available on all models. See your dealer for actual paint/trim options. Vehicles shown may contain optional equipment.



Grabber Orange

Vapor Silver Metallic

Vista Blue Metallic

Torch Red

V6/GT wheels

17" Painted-Aluminum with Tri-Bar Pony Center Cap Standard with V6 Pony Package

16" Bright Machined-Aluminum Standard on V6 Deluxe

16" Bright Machined-Aluminum with Chrome Spinner Standard on V6 Premium

17" Painted-Aluminum Standard on GT



18" Polished-Aluminum with Tri-Bar Pony Center Cap Available on GT, Standard with GT California Special Package

18" Premium Polished Forged-Aluminum Available on V6 Premium (coupe only)

18" Premium Aluminum with Tri-Bar Pony Center Cap Available on GT

17" Bright Machined-Aluminum with Tri-Bar Pony Center Cap Available on GT and V6 Premium

fordvehicles.com

5 YEAR/60,000 MILE WARRANTY
 We want your Ford Mustang ownership experience to be the best it can be. So under this warranty, your new vehicle comes with 3-year/36,000-mile Bumper-to-Bumper Coverage, 5-year/60,000-mile Powertrain Warranty Coverage and Roadside Assistance, 5-year/50,000-mile Safety Restraint Coverage, and 5-year/unlimited-mile Corrosion (Perforation) Coverage—all with no deductible. Please ask your Ford Dealer for a copy of this limited warranty.

For more assurance, the 5-year/60,000-mile powertrain limited warranty is fully transferable, has no deductible and provides you with an additional 2 years or 24,000 miles of coverage—on select components, including the engine and transmission—beyond the standard 3-year/36,000-mile Bumper-to-Bumper Coverage. Roadside Assistance is extended to 5 years or 60,000 miles, so you have the security of knowing that help may be only a phone call away should you run out of fuel, lock yourself out of the vehicle or need towing. Your Ford Dealer can provide complete details on all of these advantages.

NEW FORD ACCESSORIES
 Genuine Ford Accessories are designed and engineered specifically for Ford vehicles. Visit our website at fordaccessoriesstore.com to use the Accessorizer, and to learn about complete accessory details and purchase instructions.

SAVE THE MUSTANGS
 Along with Ford Motor Company, you can help ensure the future of this proud symbol of American freedom. savethemustangs.org

Ford Credit
 Get the ride you want. Whether you plan to lease or finance, you'll find the choices that are right for you at Ford Credit. Ask your Ford Dealer for details or check us out at fordcredit.com.

Ford Motor Company Insurance Services
 Get Ford Motor Company quality in your auto insurance. Our program offers industry-leading benefits and competitive rates. Call 1-877-352-3847, or visit us at fordip.com for a no-obligation quote. Insurance offered by American Road Services Company (in CA, American Road Insurance Agency), a licensed agency and subsidiary of Ford Motor Company.

EXTENDED SERVICE PLAN
 For a purchase or lease, the Ford Extended Service Plan (ESP) gives you "Peace-of-Mind" protection designed to cover any vehicle components and protect you from the cost of unexpected repairs. Ask your dealer for an ESP, the only service contract backed exclusively by Ford and honored at all Ford Lincoln Mercury dealerships.

fordvehicles.com



MUSTANG

America's Pony Car

fordvehicles.com



Litro in USA on recycled paper (20% post consumer)
© 2007 Ford Motor Company

08MSTCAT