



2 0 2 2 B U I C K

ENVISION

DESKTOP NAVIGATION TIPS



Click the Contents button to return to the Table of Contents.

- [Buick Connected Services⁴](#)

Click on underlined text to reveal important legal information.



⁴Connected services vary by vehicle model and require active service plan, working electrical system, cell reception and GPS signal. Does not include emergency or security services. See onstar.com for details and limitations.

Click the X to close disclaimers.





CONTENTS

TAP ANY TITLE TO EXPLORE A SPECIFIC CHAPTER



S(YOU)V

4

DESIGN

5

INTERIOR

7

SPORT TOURING

10

AVENIR

12

VERSATILITY

15

TECHNOLOGY

16

CONNECTIVITY

17

SAFETY

19

PALETTE

22

BUICK FAMILY

24

BUILD YOUR BUICK

25

Due to current supply-chain shortages, certain features shown throughout this catalog have limited or late availability, or are no longer available. See the window label or a dealer regarding the features on an individual vehicle.

S(YOU)V

Having a vehicle that truly fits your life can make all the difference. That's why, at the heart of every Buick sport utility vehicle isn't just utility. What's at the heart of a Buick SUV is actually you.

ENCORE



ENCORE GX



ENVISION



NEW ENCLAVE



Due to current supply-chain shortages, certain features shown on this page have limited or late availability, or are no longer available. See the window label or a dealer regarding the features on an individual vehicle.

DESIGNED TO MAKE EVERY DRIVE PURPOSEFUL AND PERSONAL

Thoughtfully crafted around you, Envision boasts a sleek exterior, efficient powertrain technology¹ and available features for up-to-the-minute connectivity. Wing-shaped lighting and welcome lights that animate on demand add brilliance in every possible way.

HIGHLIGHTS

- Advanced 2.0L Turbo ECOTEC engine
- Electronic Precision Shift
- Drive Mode Selector
- Buick Driver Confidence² comes standard
- Available Head-Up Display
- Available intelligent All-Wheel Drive with active twin clutch
- Available Adaptive Cruise Control³



Envision Avenir shown in Satin Steel Metallic with available features. Due to current supply-chain shortages, certain features shown have limited or late availability, or are no longer available. See the window label or a dealer regarding the features on an individual vehicle.

Envision Essence shown in Cinnabar Metallic with available features. Due to current supply-chain shortages, certain features shown have limited or late availability, or are no longer available. See the window label or a dealer regarding the features on an individual vehicle.



Envision Avenir shown in Whisper Beige with available features. Due to current supply-chain shortages, certain features shown have limited or late availability, or are no longer available. See the window label or a dealer regarding the features on an individual vehicle.



Due to current supply-chain shortages, certain features shown on this page have limited or late availability, or are no longer available. See the window label or a dealer regarding the features on an individual vehicle.

DESIGNED AND REFINED JUST FOR YOU

Inside, you'll appreciate how profoundly Envision is designed around you. Premium soft-touch materials, QuietTuning™ technology and a driver-focused cockpit prove this cabin is your way, in every way.



- QuietTuning technology
- Dual-winged center console
- Air Quality Indicator and Air Filter with Microfilter Technology
- Available massaging driver seat
- Available heated leather-wrapped steering wheel¹
- Available 10.2" diagonal touch-screen infotainment system²



Click on the arrows below to view the interior on the right in that color.

 SPORT TOURING



CONTENTS
≡

Envision Essence with Sport Touring Package shown in Cinnabar Metallic with available features.

 **SPORT TOURING**

Envision Essence with Sport Touring Package
shown in Cinnabar Metallic with available features.



TAKE ENVISION IN A BOLD DIRECTION WITH SPORT TOURING

With its blacked-out theme, the available Sport Touring (ST) Package features an aggressive, sport-inspired look. Dial up the attitude with distinctive accents and exclusive ST touches.

EXCLUSIVE ST FEATURES

- Distinctive dark-finish accents including the grille, window trim and roof rails
- 20" aluminum wheels with dark finish
- Unique alloy sport pedals
- Red accent stitching on the available leather-appointed seats
- Embroidered ST logo on the front head restraints and floor mats

Envision Avenir shown in Satin Steel Metallic with available features. Due to current supply-chain shortages, certain features shown have limited or late availability, or are no longer available. See the window label or a dealer regarding the features on an individual vehicle.



ENVISION AVENIR DELIVERS DETAILS ON A GRAND SCALE

Envision Avenir rewards not only with its list of luxuries, but with its attention to detail. Exclusive highlights include a Black Ice chrome finish on the signature Avenir grille. Inside, the leather-appointed front seating features diamond-perforated quilting.



Envision Avenir shown in Satin Steel Metallic with available features. Due to current supply-chain shortages, certain features shown have limited or late availability, or are no longer available. See the window label or a dealer regarding the features on an individual vehicle.

EXCLUSIVE FEATURES

- 20" aluminum wheels with Pearl Nickel finish
- Signature Avenir grille with Black Ice chrome finish
- Premium LED taillamps with unique clear lenses
- Diamond-perforated quilting on the leather-appointed front seats
- Textured wood-tone accents on the door panels
- Available massaging driver seat



Envision Avenir shown in Satin Steel Metallic with available features. Due to current supply-chain shortages, certain features shown have limited or late availability, or are no longer available. See the window label or a dealer regarding the features on an individual vehicle.



Due to current supply-chain shortages, certain features shown on this page have limited or late availability, or are no longer available. See the window label or a dealer regarding the features on an individual vehicle.



DESIGNED TO ACCOMMODATE POSSIBILITIES

Envision is crafted to be truly premium. It is also crafted to be truly capable. With the ideal balance of flexibility and refinement, this is space that you can make your own.

HIGHLIGHTS

- 40/60 split rear seats
- Fold-flat rear seats
- 52.7 cu. ft. of max cargo space¹
- Integrated aluminum roof rails
- Available hands-free programmable power liftgate with LED logo projection



Due to current supply-chain shortages, certain features shown on this page have limited or late availability, or are no longer available. See the window label or a dealer regarding the features on an individual vehicle.



YOUR WISH IS LITERALLY ITS COMMAND

Take the wheel of Envision and you can take Alexa along for the ride. The voice-activated convenience of Amazon Alexa Built-In¹ is just one of the experience-enhancing technologies available to help you stay focused and in control.

HIGHLIGHTS

- Wireless Apple CarPlay[®] compatibility²
- Wireless Android Auto[™] compatibility³
- Available wireless smartphone charging⁴
- Available Amazon Alexa Built-In¹



CONNECTIVITY

GIVING CONNECTIVITY A STARRING ROLE

Envision helps you move effortlessly and make smart connections. Get more out of your drive and seamlessly link your digital life to your Envision with available [Buick Connected Services](#).¹

AVAILABLE FEATURES

- Real-time traffic via [Connected Navigation](#)²
- [Wi-Fi® Hotspot](#)³
- [Reese's Book Club In-Vehicle App](#)⁴
- [In-Vehicle Apps](#)⁵ including [Spotify](#)^{®6}
- [SiriusXM](#)^{®7}

Due to current supply-chain shortages, certain features shown have limited or late availability, or are no longer available. See the window label or a dealer regarding the features on an individual vehicle.



INTELLIGENTLY CONNECTED

When you download the available [myBuick mobile app](#)¹ and upgrade to the [Remote Access Plan](#),² you can [remotely start](#)³ and stop your vehicle (if equipped), check fuel levels and enjoy many more modern perks via available [Buick Connected Services](#).⁴



YOUR PEACE OF MIND IS TOP OF MIND

Since smart technologies can help you enjoy safe travels, Envision comes standard with Buick Driver Confidence—a modern suite of advanced safety and driver-assistance features.

STANDARD BUICK DRIVER CONFIDENCE

- Automatic Emergency Braking
- Forward Collision Alert
- Following Distance Indicator
- Front Pedestrian Braking
- IntelliBeam auto high beams
- Lane Keep Assist with Lane Departure Warning



Safety or driver-assistance features are no substitute for the driver's responsibility to operate the vehicle in a safe manner. The driver should remain attentive to traffic, surroundings and road conditions at all times. Visibility, weather and road conditions may affect feature performance. Read the vehicle Owner's Manual for more important feature limitations and information.



INNOVATIONS FOR YOUR SAFETY

Envision offers additional technologies that can help you drive with confidence, be more aware of your surroundings and stay safe on the road.

AVAILABLE SAFETY AND DRIVER-ASSISTANCE FEATURES

- HD Surround Vision
- Head-Up Display
- Rear Camera Mirror
- Adaptive Cruise Control
- Enhanced Automatic Emergency Braking
- Lane Change Alert with Side Blind Zone Alert
See dealer for availability.
- Rear Cross Traffic Alert
See dealer for availability.
- Enhanced Automatic Parking Assist
- Front and Rear Park Assist
Features will not function on certain models without dealer retrofit.
See dealer for details.

Safety or driver-assistance features are no substitute for the driver's responsibility to operate the vehicle in a safe manner. The driver should remain attentive to traffic, surroundings and road conditions at all times. Visibility, weather and road conditions may affect feature performance. Read the vehicle Owner's Manual for more important feature limitations and information.



Due to current supply-chain shortages, certain features shown have limited or late availability, or are no longer available. See the window label or a dealer regarding the features on an individual vehicle.

SAFETY AND SECURITY

Envision Essence shown in Cinnabar Metallic with available features. Due to current supply-chain shortages, certain features shown have limited or late availability, or are no longer available. See the window label or a dealer regarding the features on an individual vehicle.



ONSTAR FOR ADDED CONFIDENCE

With the available OnStar® Safety & Security Plan,¹ you can have the confidence of knowing specially trained Advisors are ready to help 24/7. Plus, the available OnStar Guardian™ App² allows you to share key benefits with up to seven loved ones—in any vehicle.

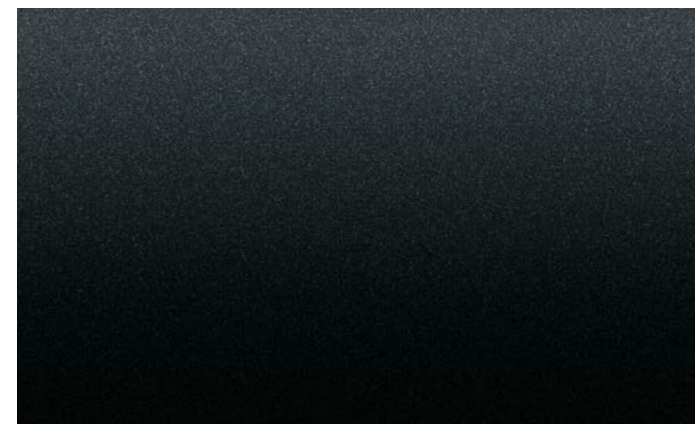
AVAILABLE FEATURES

- OnStar Guardian App²
- Emergency-Certified Advisors³
- Automatic Crash Response⁴
- Roadside Assistance⁵
- Theft Alarm Notification⁶
- Stolen Vehicle Assistance⁶

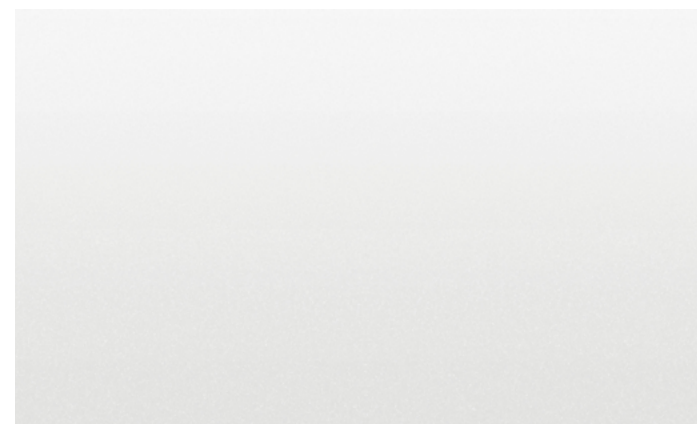
 **COLOR PALETTE**

Tap the swatches to explore the colors available for your Envision.

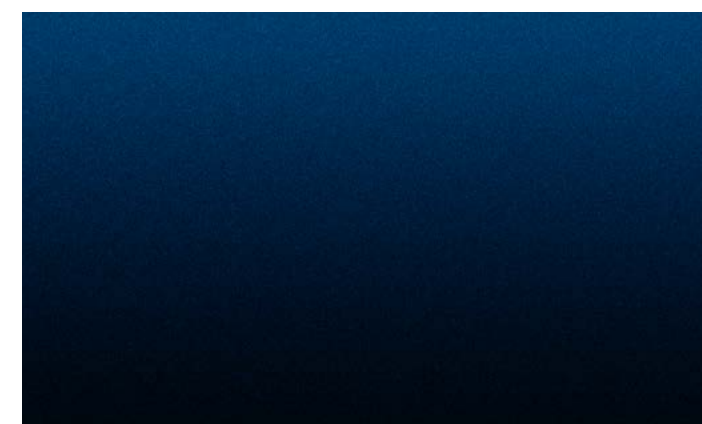
Due to current supply-chain shortages, certain features shown have limited or late availability, or are no longer available. See the window label or a dealer regarding the features on an individual vehicle. Exterior colors are subject to change. Visit buick.com for current availability.



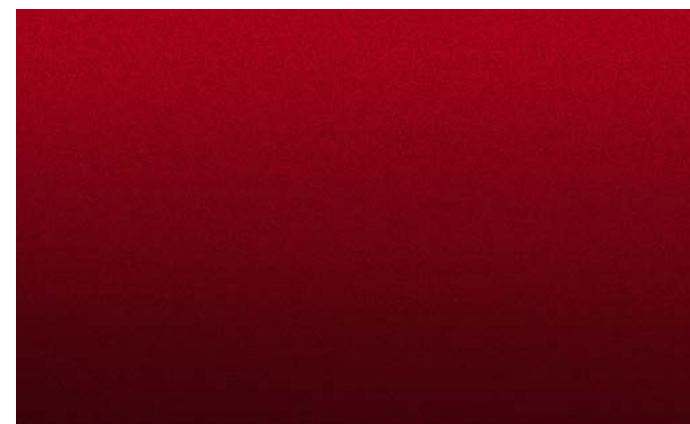
Ebony Twilight Metallic
Additional charge; premium paint.



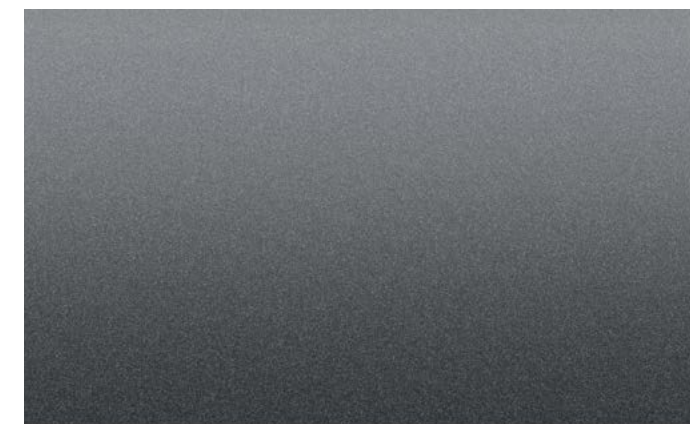
Summit White



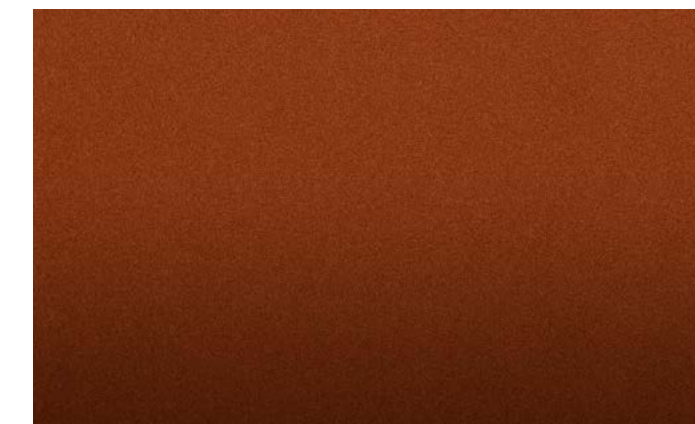
Sapphire Metallic
Additional charge; premium paint.
Not available with Sport Touring Package.



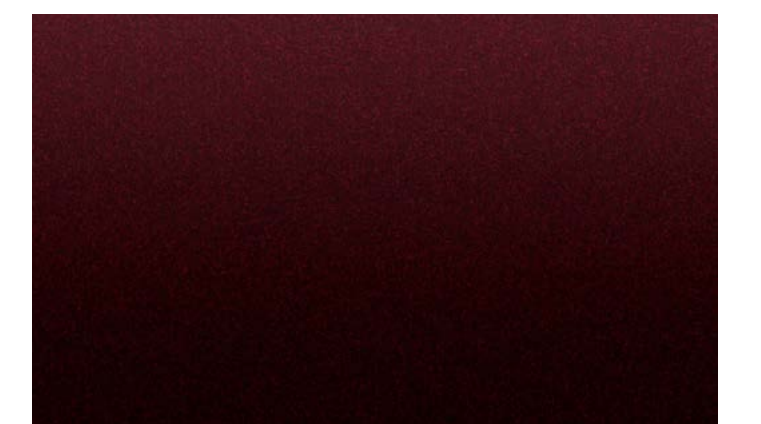
Cinnabar Metallic
Additional charge; premium paint.



Satin Steel Metallic
Additional charge; premium paint.



Burnished Bronze Metallic
Additional charge; premium paint.
Not available with Sport Touring Package.
Not available on Avenir.



Rich Garnet Metallic
Additional charge; premium paint.
Only available on Avenir.

SET A BOLD STATEMENT IN MOTION

18" Aluminum With Light
Charcoal Metallic Finish
Standard on Preferred.



18" Machined Aluminum With
Light Silver Metallic Finish
Standard on Essence.



20" Diamond-Cut Aluminum With
Carbon Flash Metallic Finish
Limited availability on Essence. See dealer for details.



20" Aluminum With Dark Finish
Standard with Sport Touring Package.



20" Aluminum With Pearl Nickel Finish
Standard on Avenir.



 **HIGHLIGHTS**

WHICH S-U-V IS FOR Y-O-U?

Choose the Buick S(YOU)V that best suits your lifestyle and you'll be rewarded with premium amenities, style and innovation designed around you and the way you live.

Due to current supply-chain shortages, certain features shown on this page have limited or late availability, or are no longer available. See the window label or a dealer regarding the features on an individual vehicle.



ENCORE

			
SEATS	ENGINE	EPA-ESTIMATED MPG—CITY/HWY (FWD)	MAX CARGO CU. FT.
5	1.4L	24/32	48.4¹

A smart value no matter how you measure it, Encore is ready to exceed your expectations. This versatile compact SUV not only helps you navigate everyday life, it helps you thrive along the way.



ENCORE GX

			
SEATS	AVAILABLE ENGINE	AVAILABLE EPA-ESTIMATED MPG—CITY/HWY (FWD)	MAX CARGO CU. FT.
5	1.3L	29/32	50.2²

Smart, versatile and ridiculously stylish, Encore GX is always a step ahead. This tech-savvy SUV has the do-it-all flexibility to fit your friends, your gear and your appetite for adventure.



NEW ENCLAVE

			
SEATS	ENGINE	EPA-ESTIMATED MPG—CITY/HWY (FWD)	MAX CARGO CU. FT.
7	3.6L	18/26	97.4¹

Inside its newly sculpted exterior is a cabin filled with equally attractive features. In other words, the real beauty is not in how great Enclave looks, but how great it is at looking after you.



ENVISION

			
SEATS	ENGINE	EPA-ESTIMATED MPG—CITY/HWY (FWD)	MAX CARGO CU. FT.
5	2.0L	24/31	52.7¹

The you-focused Envision has more than enough experience-enhancing features to make every drive more enjoyable. We invite you to schedule a test-drive and experience Buick Envision firsthand.



Due to current supply-chain shortages, certain features shown on this page have limited or late availability, or are no longer available. See the window label or a dealer regarding the features on an individual vehicle.



Build your Envision now at
BUICK.COM



We also invite you to explore "Shop. Click. Drive." for a way to shop even if you're unable to visit a dealer. [Shop online now.](#)



 **IMPORTANT WORDS**

Envision Avenir shown in Satin Steel Metallic with available features. Due to current supply-chain shortages, certain features shown have limited or late availability, or are no longer available. See the window label or a dealer regarding the features on an individual vehicle.





IMPORTANT WORDS

We have tried to make this catalog comprehensive and factual. We reserve the right, however, to make changes at any time, without notice, in prices, colors, materials, equipment, specifications, models and availability. Specifications, dimensions, measurements, ratings and other numbers in this catalog and other published materials provided at the dealership or affixed to vehicles are approximations based on design and engineering drawings, prototypes and laboratory tests. Your vehicle may differ due to variations in manufacture and equipment. Since some information may have been updated since the time of publication, please check with your Buick dealer for complete details. Buick reserves the right to lengthen or shorten the model year for any product for any reason, or to start and end model years at different times. Certain vehicle features may lose their usefulness over time due to obsolescence from technological changes. Unless otherwise noted, all claims based on GM Compact SUV segment and latest available competitive information. Excludes other GM vehicles.

3-YEAR/36,000-MILE BUMPER-TO-BUMPER LIMITED WARRANTY Buick will warrant each 2022 Envision from bumper to bumper for 3 years/36,000 miles (whichever comes first; see dealer for details), with no deductible, from the original in-service date of the vehicle, for warrantable repairs that are required as a result of defects due to materials and/or workmanship. Cosmetic corrosion resulting from defects is also covered under the Bumper-to-Bumper Limited Warranty. In addition, rust-through corrosion will be covered for 6 years/100,000 miles (whichever comes first; see dealer for details).

POWERTRAIN LIMITED WARRANTY Every 2022 Buick Envision comes with a 5-year/60,000-mile (whichever comes first) transferable Powertrain Limited Warranty. 24/7 Roadside Assistance and Courtesy Transportation are also offered for the duration of the Powertrain Limited Warranty. Please see your Buick dealer for details.

AN IMPORTANT NOTE ABOUT ALTERATIONS AND WARRANTIES Installations or alterations to the original equipment vehicle (or chassis) as distributed by General Motors are not covered by the General Motors New Vehicle Limited Warranty. The special body company, assembler, equipment installer or upfitter is solely responsible for warranties on the body or equipment and any alterations (or any effect of the alterations) to any of the parts, components, systems or assemblies installed by GM. General Motors is not responsible for the safety or quality of design features, materials or workmanship of any alterations by such suppliers.

ASSEMBLY Buick vehicles and their components are assembled or produced by different operating units of General Motors, its subsidiaries or suppliers to GM worldwide. We sometimes find it necessary to produce Buick vehicles with different or differently sourced components than originally scheduled. Since some options may be unavailable when your vehicle is assembled, we suggest that you verify that your vehicle includes the equipment you ordered or, if there are changes, that they are acceptable to you.

ENGINES Buick products are equipped with engines produced by GM Powertrain or other suppliers to GM worldwide. The engines in Buick products may also be used in other GM makes and models.

TRAILERING AND OFF-ROAD DRIVING INFORMATION Please go to buick.com and carefully review the vehicle Owner's Manual for important safety information about trailering or off-road driving in your vehicle.

ONSTAR AND BUICK CONNECTED SERVICES Connected vehicle services vary by vehicle model and require working electrical system, cell reception and GPS signal. Requires active service plan. OnStar links to emergency services. See onstar.com for details and limitations.

A NOTE ON CHILD SAFETY Always use seat belts and the correct child restraint for your child's age and size, even with airbags. Even in vehicles equipped with the Passenger Sensing System, children are safer when properly secured in a rear seat in the appropriate infant, child or booster seat. Never place a rear-facing infant restraint in the front seat of any vehicle equipped with an active frontal airbag. See your vehicle Owner's Manual and child safety seat instructions for more safety information.

FLEET ORDERS Some standard content may be deleted with fleet orders. See dealer for details.

GMMOBILITY.COM (1-800-323-9935) GM Mobility offers financial assistance for eligible adaptive equipment to make automotive travel easier for persons with disabilities or special transportation needs. To learn more about special GM Mobility offers, visit gmmobility.com.

GM, the GM logo, Buick, the Buick emblem, OnStar, the OnStar emblem and the slogans, emblems, vehicle model names, vehicle body designs and other marks appearing in this catalog are the trademarks and/or service marks of General Motors, its subsidiaries, affiliates or licensors. Sirius, XM and all related marks and logos are trademarks of SiriusXM Radio, Inc. The Facebook logo is a trademark of Facebook, Inc. The Twitter logo is a trademark of Twitter, Inc. Google, Android, Google Play, Android Auto and other marks are trademarks of Google LLC. Apple CarPlay, Siri, iPhone and Apple Music are trademarks of Apple, Inc. The Instagram logo is a trademark of Instagram, Inc. ©2022 General Motors. All rights reserved.

To learn more about why Certified Service is the perfect companion for your Envision, visit mycertifiedservice.com.

CONTENTS

