



2022
SILVERADO 4500 HD |
5500 HD | 6500 HD

BIG JOBS DONE RIGHT.

The most demanding jobs require strength and flexibility. Silverado 4500 HD, 5500 HD and 6500 HD Chassis Cabs provide both, with the proven power of a Duramax® 6.6L Turbo-Diesel V8 engine along with a wide variety of chassis upfit¹ options that cater to your heavy-duty needs. Excellent maneuverability and forward visibility are features you'll appreciate every day, and multiple cab-to-axle options and Gross Vehicle Weight Ratings (GVWR) help make light work of tough tasks. You'll quickly see these trucks help make sure every job is a job well done.



Silverado 6500 HD Regular Cab with a dump truck upfit from an independent supplier.¹

¹ Shown with upfit from an independent supplier. Equipment from independent suppliers is not covered by the GM New Vehicle Limited Warranty. GM is not responsible for the safety or quality of independent supplier alterations.

SILVERADO MEDIUM DUTY CHASSIS CABS AT A GLANCE.

- Duramax 6.6L Turbo-Diesel V8 engine optimized for medium-duty applications with 350 horsepower and 700 lb.-ft. of torque
- Allison® 6-speed close-ratio transmission with double overdrive designed for medium-duty applications
- Standard exhaust brake
- GVWRs up to 23,500 lbs¹
- Single-piece straight frame rails with no welds or brackets and a clean top-of-rail design to make upfitting simple and efficient
- Eight cab-to-axle options, 10 wheelbase options and five axle-to-end-of-frame options
- Three levels of available fuel capacity – a standard 40-gallon² rear tank, an available 25-gallon² front tank or both – provide a combined total capacity of 65 gallons²
- Up to 50-degree wheel cut for a tight turning radius, which aids in maneuverability
- Clamshell engine cover provides walk-up engine access
- Battery box conveniently located underneath the driver door
- Available heavy-duty locking rear differential
- Available rear air suspension offering a better ride and easier loading/unloading



Silverado 5500 HD Crew Cab with a service body and bucket lift upfit from an independent supplier³



Silverado 5500 HD Regular Cab with snow plow and salt spreader upfits from an independent supplier³

¹ Requires Silverado 6500 HD. Maximum Gross Vehicle Weight Rating (GVWR). When properly equipped; includes weight of vehicle, passengers, cargo and equipment. ² Capacities are approximate. ³ Shown with upfit from an independent supplier. Equipment from independent suppliers is not covered by the GM New Vehicle Limited Warranty. GM is not responsible for the safety or quality of independent supplier alterations.

MODEL AVAILABILITY

● AVAILABLE – NOT AVAILABLE

REGULAR CAB



| WHEELBASE (IN.) | 2WD | 4x4 | CAB-TO-AXLE LENGTH (IN.) | AVAILABLE AXLE-TO-END-OF-FRAME LENGTH (IN.) |
|-----------------|-----|-----|-----------------------------|--|
| 141 | ● | – | 60 | 49, 63, 91 |
| 165 | ● | ● | 84 | 49, 63, 91 |
| 189 | ● | ● | 108 | 49, 63, 75 |
| 201 | ● | ● | 120 | 49, 63, 75 |
| 219 | ● | ● | 138 | 75 |
| 231 | ● | ● | 150 | 91 |
| 243 | ● | ● | 162 | 83 |

CREW CAB



| WHEELBASE (IN.) | 2WD | 4x4 | CAB-TO-AXLE LENGTH (IN.) | AVAILABLE AXLE-TO-END-OF-FRAME LENGTH (IN.) |
|-----------------|-----|-----|-----------------------------|--|
| 175 | ● | ● | 60 | 49 |
| 199 | ● | ● | 84 | 49, 63 |
| 219 | ● | ● | 104 | 75 |
| 235 | ● | ● | 120 | 75 |

PAYLOAD AND VEHICLE WEIGHT RATINGS

| MODEL | SERIES | AXLE RATIO | MAX GCWR (LBS.) ¹ | MAX PAYLOAD (LBS.) ² (REGULAR CAB/CREW CAB) | GVWR (LBS.) ³ |
|---------------------------|---------|------------|------------------------------|---|--------------------------|
| Silverado Chassis Cab 2WD | 4500 HD | 4.10 | 30,000 | 6,494/5,750 | 14,001 |
| | 4500 HD | 4.10 | 30,000 | 7,493/6,749 | 15,000 |
| | 4500 HD | 4.10 | 30,000 | 8,493/7,749 | 16,000 |
| | 4500 HD | 4.10 | 30,000 | 8,993/8,249 | 16,500 |
| | 5500 HD | 4.10 | 30,000 | 9,993/9,249 | 17,500 |
| | 5500 HD | 4.10 | 30,000 | 10,493/9,749 | 18,000 |
| | 5500 HD | 4.10 | 30,000 | 11,933/11,196 | 19,500 |
| | 6500 HD | 4.10 | 30,000 | 13,940/13,196 | 21,500 |
| | 6500 HD | 4.10 | 30,000 | 15,380/14,636 | 22,940 |
| | 6500 HD | 4.10 | 30,000 | 15,940/15,196 | 23,500 |
| Silverado Chassis Cab 4x4 | 4500 HD | 4.30 | 34,000 | 5,830/5,186 | 14,001 |
| | 4500 HD | 4.30 | 34,000 | 6,829/6,186 | 15,000 |
| | 4500 HD | 4.30 | 34,000 | 7,829/7,186 | 16,000 |
| | 4500 HD | 4.30 | 34,000 | 8,329/7,686 | 16,500 |
| | 5500 HD | 4.30 | 34,000 | 9,329/8,686 | 17,500 |
| | 5500 HD | 4.30 | 34,000 | 9,829/9,186 | 18,000 |
| | 5500 HD | 4.30 | 34,000 | 11,269/10,693 | 19,500 |
| | 6500 HD | 4.30 | 34,000 | 12,686/12,193 | 21,000 |
| | 6500 HD | 4.30 | 34,000 | 14,276/13,693 | 22,500 |
| | 6500 HD | 4.30 | 34,000 | 14,776/14,193 | 23,000 |

¹ Gross Combination Weight Rating. ² These maximum payload ratings are intended for comparison purposes only. Before you buy a vehicle or use it to haul people or cargo, carefully review the Vehicle Loading section of the Owner's Manual and check the carrying capacity of your specific vehicle on the label on the inside of the driver door jamb. ³ Maximum Gross Vehicle Weight Rating (GVWR). When properly equipped; includes weight of vehicle, passengers, cargo and equipment.

PAYLOAD AND VEHICLE WEIGHT RATINGS (CONTINUED)

| MODEL | SERIES | AXLE RATIO | MAX GCWR (LBS.) ¹ | MAX PAYLOAD (LBS.) ² (REGULAR CAB/CREW CAB) | GVWR (LBS.) ³ |
|---------------------------|---------|------------|------------------------------|---|--------------------------|
| Silverado Chassis Cab 2WD | 4500 HD | 4.56 | 35,000 | 6,494/5,750 | 14,001 |
| | 4500 HD | 4.56 | 35,000 | 7,493/6,749 | 15,000 |
| | 4500 HD | 4.56 | 35,000 | 8,493/7,749 | 16,000 |
| | 4500 HD | 4.56 | 35,000 | 8,993/8,249 | 16,500 |
| | 5500 HD | 4.56 | 35,000 | 9,993/9,249 | 17,500 |
| | 5500 HD | 4.56 | 35,000 | 10,493/9,749 | 18,000 |
| | 5500 HD | 4.56 | 35,000 | 11,933/11,196 | 19,500 |
| | 6500 HD | 4.56 | 35,000 | 13,940/13,196 | 21,500 |
| | 6500 HD | 4.56 | 35,000 | 15,380/14,636 | 22,940 |
| | 6500 HD | 4.56 | 35,000 | 15,940/15,196 | 23,500 |
| Silverado Chassis Cab 2WD | 4500 HD | 4.88 | 37,000 | 6,494/5,750 | 14,001 |
| | 4500 HD | 4.88 | 37,000 | 7,493/6,749 | 15,000 |
| | 4500 HD | 4.88 | 37,000 | 8,493/7,749 | 16,000 |
| | 4500 HD | 4.88 | 37,000 | 8,993/8,249 | 16,500 |
| | 5500 HD | 4.88 | 37,000 | 9,993/9,249 | 17,500 |
| | 5500 HD | 4.88 | 37,000 | 10,493/9,749 | 18,000 |
| | 5500 HD | 4.88 | 37,000 | 11,933/11,196 | 19,500 |
| | 6500 HD | 4.88 | 37,000 | 13,940/13,196 | 21,500 |
| | 6500 HD | 4.88 | 37,000 | 15,380/14,636 | 22,940 |
| | 6500 HD | 4.88 | 37,000 | 15,940/15,196 | 23,500 |

¹ Gross Combination Weight Rating. ² These maximum payload ratings are intended for comparison purposes only. Before you buy a vehicle or use it to haul people or cargo, carefully review the Vehicle Loading section of the Owner's Manual and check the carrying capacity of your specific vehicle on the label on the inside of the driver door jamb. ³ Maximum Gross Vehicle Weight Rating (GVWR). When properly equipped; includes weight of vehicle, passengers, cargo and equipment.

EXTERIOR COLORS



Summit White



Silver Ice Metallic



Shadow Gray Metallic



Oxford Brown Metallic



Red Hot



Greenstone Metallic



Northsky Blue Metallic



Deep Ocean Blue Metallic¹



Black

¹Extra-cost color.

INTERIOR COLORS

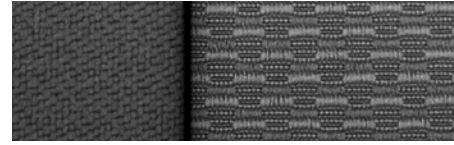
INTERIOR COLORS



Dark Ash Vinyl Standard on WT



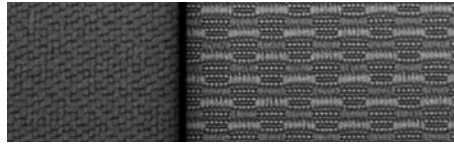
Jet Black Cloth Available on WT



Dark Ash Cloth Available on WT



Jet Black Cloth Standard on LT



Dark Ash Cloth Standard on LT

STANDARD EQUIPMENT

Standard on every Silverado 4500 HD, 5500 HD and 6500 HD

| MECHANICAL |
|---|
| Alternator – 105 amps |
| Axle – open rear, non-locking |
| Batteries – dual, heavy-duty, 1100 cold-cranking amps (CCA), includes battery box mounted to left side under cab |
| Brakes – hydraulic, heavy-duty Bosch/Meritor/WABCO system with 4-channel ABS – driveline parking brake system |
| Engine – Duramax 6.6L Turbo-Diesel V8 |
| Exhaust brake |
| Fuel tank – rear, 40 gallons, mounted between frame side rails and behind rear axle |
| StabiliTrak® – Electronic Stability Control System and Traction Control; includes Electronic Trailer Sway Control and Hill Start Assist |
| Steering – power |
| Trailer brake controller – integrated |
| Trailering provisions – trailering wire harness only, trailer combined (stop lamp/taillamps/turn signals) connection socket and harness mounted at rear of frame |
| Transmission – Allison® automatic close-ratio 6-speed with double overdrive – Neutral-at-Stop; automatic transmission shifts to Neutral when the service brake is depressed while the vehicle is at a complete stop, and remains in Neutral until the service brake is released – transmission shift control calibration, FuelSense Performance |
| EXTERIOR |
| Assist steps |
| Bumper – front, Black |
| Daytime running lamps – with automatic exterior lamp control |
| Door handles – Black |
| Front fender extension – body-color |
| Fuel filler – capped |
| Glass – solar-absorbing, tinted |
| Grille – Black |
| Grille guard screen – insect protection |
| Headlamps – halogen projector-beam |
| Horn – single-note |
| Lamps – cargo area, cab-mounted with switch on center switch bank, and Smoked Amber roof marker |
| Tires – 225/70R19.5G highway Goodyear® |
| Wheels – 19.5" Black-painted steel |

| INTERIOR |
|--|
| Airbags¹ – single-stage frontal airbags for driver and front outboard passenger; seat-mounted side-impact airbags for driver and front outboard passenger; head-curtain airbags for front and rear outboard seating positions (Crew Cab); single-stage frontal airbags for driver and front outboard passenger; seat-mounted side-impact airbags for driver and front outboard passenger; head-curtain airbags for front outboard seating positions; includes airbag deactivation switch for front outboard passenger airbag (Regular Cab) |
| Air conditioning – single-zone |
| Assist handles – driver and front passenger, A-pillar |
| Cruise control – steering wheel-mounted |
| Door locks – power |
| Floor covering – Graphite-color rubberized-vinyl |
| Instrumentation – 6-gauge cluster featuring speedometer, fuel level, engine temperature, tachometer, voltage and oil pressure |
| Seats – front 40/20/40 split-bench, 3-passenger, driver and front passenger recline with outboard head restraints and center fold-down armrest with storage |
| Steering column – manual tilt-wheel |
| Upfitter switch kit – provides up to four 30-amp circuits to facilitate installation of aftermarket electrical accessories² located on the instrument panel |

¹ A NOTE ON CHILD SAFETY: Always use seat belts and the correct child restraint for your child's age and size, even with airbags. Even in vehicles equipped with the Passenger Sensing System, children are safer when properly secured in a rear seat in the appropriate infant, child or booster seat. Never place a rear-facing infant restraint in the front seat of any vehicle equipped with an active frontal airbag. See your vehicle Owner's Manual and the child safety seat instructions for more safety information.

² Equipment from independent suppliers is not covered by the GM New Vehicle Limited Warranty. GM is not responsible for the safety or quality of independent supplier alterations.

SPECIFICATIONS

● STANDARD ○ AVAILABLE – NOT AVAILABLE

| | REG CAB 1WT 2WD | CREW CAB 1WT 2WD | REG CAB 1WT 4x4 | CREW CAB 1WT 4x4 | REG CAB 1LT 2WD | CREW CAB 1LT 2WD | REG CAB 1LT 4x4 | CREW CAB 1LT 4x4 |
|--|-----------------|------------------|-----------------|------------------|-----------------|------------------|-----------------|------------------|
| SAFETY AND DRIVER ASSISTANCE | | | | | | | | |
| Airbags ¹ – single-stage frontal airbags for driver and front outboard passenger; seat-mounted side-impact airbags for driver and front outboard passenger; head-curtain airbags for front and rear outboard seating positions (Crew Cab); single-stage frontal airbags for driver and front outboard passenger; seat-mounted side-impact airbags for driver and front outboard passenger; head-curtain airbags for front outboard seating positions; includes airbag deactivation switch for front outboard passenger airbag (Regular Cab) | ● | ● | ● | ● | ● | ● | ● | ● |
| – frontal and seat-mounted side-impact airbags for driver only; head-curtain airbags on both sides with rollover protection (requires available passenger seat delete) | ○ | – | ○ | – | ○ | – | ○ | – |
| – single-stage frontal airbags for driver and front outboard passenger; seat-mounted side-impact airbags for driver and front outboard passenger; includes airbag deactivation switch for front outboard passenger airbag (does not include head-curtain airbags for front outboard seating positions; requires available Shuttle Bus Package, Motorhome Package or Emergency Service Package) | ○ | – | ○ | – | ○ | – | ○ | – |
| – frontal and seat-mounted side-impact airbags for driver only (does not include head-curtain airbags for front outboard seating positions; requires available passenger seat delete and Shuttle Bus Package, Motorhome Package or Emergency Service Package) | ○ | – | ○ | – | ○ | – | ○ | – |
| Rear Vision Camera ² – display integrated into radio (shipped loose in cab for upfitter installation) | ● | ● | ● | ● | ● | ● | ● | ● |
| Theft-deterrent system (requires available remote vehicle starter system) | – | – | – | – | ○ | ○ | ○ | ○ |
| OnStar [®] – up to 3 months of OnStar Safety & Security coverage ³ (requires available Chevrolet Infotainment System ⁴ with 7-inch diagonal color touch-screen on 1WT) | ○ | ○ | ○ | ○ | ● | ● | ● | ● |
| – OnStar delete (requires Fleet or Government order on 1LT) | ● | ● | ● | ● | ○ | ○ | ○ | ○ |

| | REG CAB 1WT 2WD | CREW CAB 1WT 2WD | REG CAB 1WT 4x4 | CREW CAB 1WT 4x4 | REG CAB 1LT 2WD | CREW CAB 1LT 2WD | REG CAB 1LT 4x4 | CREW CAB 1LT 4x4 |
|---|-----------------|------------------|-----------------|------------------|-----------------|------------------|-----------------|------------------|
| MECHANICAL | | | | | | | | |
| Air compressor accessory drive (restrictions apply; see your dealer or Fleet representative for details) | ○ | ○ | ○ | ○ | ○ | ○ | ○ | ○ |
| Air dryer – heated (requires available air compressor accessory drive) | ○ | ○ | ○ | ○ | ○ | ○ | ○ | ○ |
| Alternator – 150 amps | ● | ● | ● | ● | ● | ● | ● | ● |
| – 220 amps | ○ | ○ | ○ | ○ | ○ | ○ | ○ | ○ |
| – dual, 150 amps and 220 amps | ○ | ○ | ○ | ○ | ○ | ○ | ○ | ○ |
| Axle – open rear, non-locking | ● | ● | ● | ● | ● | ● | ● | ● |
| – limited-slip, Dana Spicer Truetrac, torque proportioning limited-slip | ○ | ○ | ○ | ○ | ○ | ○ | ○ | ○ |
| – differential, heavy-duty locking rear (requires 15,500-lb. rear axle capacity) (restrictions apply; see your dealer or Fleet representative for details) | ○ | ○ | ○ | ○ | ○ | ○ | ○ | ○ |
| Axle, front – 6,250-lb. capacity Dana Spicer D800-N, I-beam, non-driving; includes rear shock absorbers (G68) (requires 6,250-lb. front suspension [FTW]; not available with rear air suspension) | ● | – | – | – | ● | – | – | – |
| – 7,000-lb. capacity Dana Spicer D800-N, I-beam, non-driving (requires 7,000-lb. front suspension [FK6]; Regular Cab requires available Vocational Specific Heavy Suspension Package with 141" or 165" Wheelbase) | ○ | ● | – | – | ○ | ● | – | – |
| – 7,500-lb. capacity Dana Spicer 60-256, single-reduction, front-driving | – | – | ● | ● | – | – | ● | ● |
| – 8,000-lb. capacity Dana Spicer D800-N, I-beam, non-driving (requires 8,000-lb. front suspension [FSN]; Regular Cab requires available Vocational Specific Heavy Suspension Package with 141" or 165" Wheelbase) | ○ | ○ | – | – | ○ | ○ | – | – |
| – lubricant, synthetic oil EMGARD [®] FE 75W-90 | – | – | ● | ● | – | – | ● | ● |
| – oil seal for hub, Chicago Rawhide Nitrile for oil-lubricated wheel bearings | ○ | ○ | ○ | ○ | ○ | ○ | ○ | ○ |
| – oil-filled hubs, synthetic oil EMGARD FE 75W-90 (requires available oil seal for front hub) | ○ | ○ | – | – | ○ | ○ | – | – |
| Axle ratio, rear – 4.10 (066); maximum road speed 79 mph | ● | ● | – | – | ● | ● | – | – |
| – 4.30 (092); maximum road speed 75 mph | ○ | ○ | ● | ● | ○ | ○ | ● | ● |
| – 4.56 (005); maximum road speed 70 mph | ○ | ○ | – | – | ○ | ○ | – | – |
| – 4.88 (008); maximum road speed 65 mph | ○ | ○ | – | – | ○ | ○ | – | – |

¹ **A NOTE ON CHILD SAFETY:** Always use seat belts and the correct child restraint for your child's age and size, even with airbags. Even in vehicles equipped with the Passenger Sensing System, children are safer when properly secured in a rear seat in the appropriate infant, child or booster seat. Never place a rear-facing infant restraint in the front seat of any vehicle equipped with an active frontal airbag. See your vehicle Owner's Manual and the child safety seat instructions for more safety information.

² Safety or driver assistance features are no substitute for the driver's responsibility to operate the vehicle in a safe manner. Read the vehicle Owner's Manual for important feature limitations and information. ³ When you select a monthly plan within 30 days of activating your 1-month trial, you'll receive the next 2 months of the plan you select at no additional charge when you associate an approved payment method on file to your account and authorize recurring payments for your service plan. The amount and frequency of each recurring payment is based upon the service(s) and payment interval(s) you select from the options provided. After the trial expires, OnStar will automatically bill your payment method monthly at then-current standard monthly rates. Plans containing 4G LTE data will be billed every 30 days by AT&T. You may cancel at any time by pushing your blue OnStar button or calling 1-888-466-7827. May not be combined with other offers or retroactively applied. Offer subject to change.

⁴ Chevrolet Infotainment System functionality varies by model. Full functionality requires compatible Bluetooth and smartphone, and USB connectivity for some devices.

SPECIFICATIONS (CONTINUED)

● STANDARD ○ AVAILABLE – NOT AVAILABLE

| | REG CAB 1WT 2WD | CREW CAB 1WT 2WD | REG CAB 1WT 4x4 | CREW CAB 1WT 4x4 | REG CAB 1LT 2WD | CREW CAB 1LT 2WD | REG CAB 1LT 4x4 | CREW CAB 1LT 4x4 |
|---|-----------------|------------------|-----------------|------------------|-----------------|------------------|-----------------|------------------|
| MECHANICAL (CONTINUED) | | | | | | | | |
| Axle, rear – 10,000-lb. capacity (FN1) Dana Spicer S14-110, single reduction | ○ | ● | ○ | ○ | ○ | ● | ○ | ○ |
| – 11,000-lb. capacity (GL4) Dana Spicer S14-110, single reduction | ● | ○ | ● | ● | ● | ○ | ● | ○ |
| – 13,500-lb. capacity (HD2) Dana Spicer S14-110, single reduction | ○ | ○ | ○ | ○ | ○ | ○ | ○ | ○ |
| – 15,000-lb. capacity (HD1) Dana Spicer S16-130, single reduction | ○ | ○ | ○ | ○ | ○ | ○ | ○ | ○ |
| – 15,500-lb. capacity (J27) Dana Spicer S16-130, single reduction | | | | | | | | |
| (Note: 15,500-lb. rear axle capacity can be reduced by rear tire capacity or rear suspension; maximum axle capacity will not be higher than the rear tire or rear suspension capacity selected for vehicle) | ○ | ○ | ○ | ○ | ○ | ○ | ○ | ○ |
| Axle-to-end-of-frame length – 49" (Regular Cab 2WD requires 141", 165", 189" or 201" Wheelbase; Regular Cab 4x4 requires 165", 189" or 201" Wheelbase; Crew Cab requires 175" or 199" Wheelbase) | ● | ● | ● | ● | ● | ● | ● | ● |
| – 63" (Regular Cab 2WD requires 141", 165", 189" or 201" Wheelbase; Regular Cab 4x4 requires 165", 189" or 201" Wheelbase; Crew Cab requires 199" Wheelbase) | ○ | ○ | ○ | ○ | ○ | ○ | ○ | ○ |
| – 75" (Regular Cab requires 189", 201" or 219" Wheelbase; Crew Cab requires 219" or 235" Wheelbase) | ○ | ○ | ○ | ○ | ○ | ○ | ○ | ○ |
| – 83" (requires 243" Wheelbase) | ○ | – | ○ | – | ○ | – | ○ | – |
| – 91" (Regular Cab 2WD requires 141", 165" or 231" Wheelbase; Regular Cab 4x4 requires 165" or 231" Wheelbase) | ○ | – | ○ | – | ○ | – | ○ | – |
| Battery – dual, heavy-duty, 1100 cold-cranking amps (CCA), includes battery box mounted to left side under cab | ● | ● | ● | ● | ● | ● | ● | ● |
| – dual, heavy-duty, 1300 cold-cranking amps (CCA), includes battery box mounted to left side under cab | ○ | ○ | ○ | ○ | ○ | ○ | ○ | ○ |
| – triple, heavy-duty, 2250 cold-cranking amps (CCA), temporarily mounted behind cab with no battery box included (restrictions apply; see your dealer or Fleet representative for details) | ○ | ○ | ○ | ○ | ○ | ○ | ○ | ○ |
| – top post threaded, battery jump start stud, located on battery box (requires available 1100 cold-cranking amps [CCA] or 1300 cold-cranking amps [CCA] dual batteries) | ○ | ○ | ○ | ○ | ○ | ○ | ○ | ○ |
| Brakes – hydraulic, heavy-duty Bosch/Meritor/WABCO system with 4-channel ABS | ● | ● | ● | ● | ● | ● | ● | ● |
| – driveline parking brake system | ● | ● | ● | ● | ● | ● | ● | ● |

| | REG CAB 1WT 2WD | CREW CAB 1WT 2WD | REG CAB 1WT 4x4 | CREW CAB 1WT 4x4 | REG CAB 1LT 2WD | CREW CAB 1LT 2WD | REG CAB 1LT 4x4 | CREW CAB 1LT 4x4 |
|--|-----------------|------------------|-----------------|------------------|-----------------|------------------|-----------------|------------------|
| MECHANICAL (CONTINUED) | | | | | | | | |
| Engine – Duramax 6.6L Turbo-Diesel V8 with common rail Direct Injection; 350 hp @ 2700 rpm, 700 lb.-ft. torque @ 1600 rpm; includes Diesel Exhaust Brake | ● | ● | ● | ● | ● | ● | ● | ● |
| – DPF diesel particulate filter, manual regeneration – customer regeneration will not be allowed until the DPF load percentage has reached 100% and a Driver Information Center (DIC) message has been shown | ○ | ○ | ○ | ○ | ○ | ○ | ○ | ○ |
| – engine block heater | ○ | ○ | ○ | ○ | ○ | ○ | ○ | ○ |
| Exhaust system – right-side exit, behind rear wheels (requires 141" Wheelbase) | ● | – | – | – | ● | – | – | – |
| – rear exit (not available with 141" Wheelbase) | ○ | ● | ● | ● | ○ | ● | ● | ● |
| – left-side exit, ahead of rear wheels (restrictions apply; see your dealer or Fleet representative for details) | ○ | ○ | ○ | ○ | ○ | ○ | ○ | ○ |
| – right-side exit, ahead of rear wheels (restrictions apply; see your dealer or Fleet representative for details) | ○ | ○ | ○ | ○ | ○ | ○ | ○ | ○ |
| Fuel tank – rear only, 40 gallons, mounted between frame side rails and behind rear axle | ● | ● | ● | ● | ● | ● | ● | ● |
| – front, 25 gallons | ○ | ○ | ○ | ○ | ○ | ○ | ○ | ○ |
| – front and rear, 65 gallons total | ○ | ○ | ○ | ○ | ○ | ○ | ○ | ○ |
| Gross Combination Weight Rating (GCWR) – 26,000 lbs. (requires 26,000-lb. GCWR transmission MWA, MWB, MIU, MIA, MH1, MG0, MIX, MFO, MA6 or MB6) | ○ | ○ | ○ | ○ | ○ | ○ | ○ | ○ |
| – 30,000 lbs. (requires 30,000-lb. GCWR transmission MBV, MBW, MBX, MBY, MEO, MHV, MIO or MJO) | ○ | ○ | ○ | ○ | ○ | ○ | ○ | ○ |
| – 34,000 lbs. (requires 34,000-lb. GCWR transmission MBV, MBW, MBX, MBY, MEO, MHV, MIO or MJO; requires 4.30 rear axle ratio [092], and 15,000-lb. rear axle [HD1] or 15,500-lb. rear axle [J27]) | ○ | ○ | ○ | ○ | ○ | ○ | ○ | ○ |
| – 35,000 lbs. (requires 35,000-lb. GCWR transmission MBV, MBW, MBX, MBY, MEO, MHV, MIO or MJO; requires 4.56 rear axle ratio [005], and 15,000-lb. rear axle [HD1] or 15,500-lb. rear axle [J27]) | ○ | ○ | – | – | ○ | ○ | – | – |
| – 37,000 lbs. (requires 37,000-lb. GCWR transmission MBV, MBW, MBX, MBY, MEO, MHV, MIO or MJO; requires 4.88 rear axle ratio [008], and 15,000-lb. rear axle [HD1] or 15,500-lb. rear axle [J27]) | ○ | ○ | – | – | ○ | ○ | – | – |

SPECIFICATIONS (CONTINUED)

● STANDARD ○ AVAILABLE – NOT AVAILABLE

| | REG CAB 1WT 2WD | CREW CAB 1WT 2WD | REG CAB 1WT 4x4 | CREW CAB 1WT 4x4 | REG CAB 1LT 2WD | CREW CAB 1LT 2WD | REG CAB 1LT 4x4 | CREW CAB 1LT 4x4 |
|--|-----------------|------------------|-----------------|------------------|-----------------|------------------|-----------------|------------------|
| MECHANICAL (CONTINUED) | | | | | | | | |
| Gross Vehicle Weight Rating (GVWR) – 16,500 lbs. (requires Silverado 4500 HD) (restrictions apply; see your dealer or Fleet representative for details) | ● | ● | ● | ● | ● | ● | ● | ● |
| – 14,001 lbs. (requires Silverado 4500 HD) (restrictions apply; see your dealer or Fleet representative for details) | ○ | ○ | ○ | ○ | ○ | ○ | ○ | ○ |
| – 15,000 lbs. (requires Silverado 4500 HD) (restrictions apply; see your dealer or Fleet representative for details) | ○ | ○ | ○ | ○ | ○ | ○ | ○ | ○ |
| – 16,000 lbs. (requires Silverado 4500 HD) (restrictions apply; see your dealer or Fleet representative for details) | ○ | ○ | ○ | ○ | ○ | ○ | ○ | ○ |
| – 17,500 lbs. (requires Silverado 5500 HD) (restrictions apply; see your dealer or Fleet representative for details) | ○ | ○ | ○ | ○ | ○ | ○ | ○ | ○ |
| – 18,000 lbs. (requires Silverado 5500 HD) (restrictions apply; see your dealer or Fleet representative for details) | ○ | ○ | ○ | ○ | ○ | ○ | ○ | ○ |
| – 19,500 lbs. (requires Silverado 5500 HD) (restrictions apply; see your dealer or Fleet representative for details) | ○ | ○ | ○ | ○ | ○ | ○ | ○ | ○ |
| – 21,000 lbs. (requires Silverado 6500 HD) (restrictions apply; see your dealer or Fleet representative for details) | – | – | ○ | ○ | – | – | ○ | ○ |
| – 21,500 lbs. (requires Silverado 6500 HD) (restrictions apply; see your dealer or Fleet representative for details) | ○ | ○ | – | – | ○ | ○ | – | – |
| – 22,500 lbs. (requires Silverado 6500 HD) (restrictions apply; see your dealer or Fleet representative for details) | – | – | ○ | ○ | – | – | ○ | ○ |
| – 22,940 lbs. (requires Silverado 6500 HD) (restrictions apply; see your dealer or Fleet representative for details) | ○ | ○ | – | – | ○ | ○ | – | – |
| – 23,000 lbs. (requires Silverado 6500 HD) (restrictions apply; see your dealer or Fleet representative for details) | – | – | ○ | ○ | – | – | ○ | ○ |
| – 23,500 lbs. (requires Silverado 6500 HD) (restrictions apply; see your dealer or Fleet representative for details) | ○ | ○ | – | – | ○ | ○ | – | – |
| Heater hose – silicone (requires available heater hose clamps, [Breeze] Belleville washer type) | ○ | ○ | ○ | ○ | ○ | ○ | ○ | ○ |
| Heater hose clamps – (Breeze) Belleville washer type | ○ | ○ | ○ | ○ | ○ | ○ | ○ | ○ |
| High idle switch (not available with Power Take-Off engine control provisions; requires available Power Take-Off not installed) | ○ | ○ | ○ | ○ | ○ | ○ | ○ | ○ |
| Label information – clean idle, optional door location | ○ | ○ | ○ | ○ | ○ | ○ | ○ | ○ |
| Power Take-Off – not installed | ○ | ○ | ○ | ○ | ○ | ○ | ○ | ○ |
| – engine control provisions, access available on left and right side | ○ | ○ | ○ | ○ | ○ | ○ | ○ | ○ |
| Prop shaft guard – steel (not available with front fuel tank [25 gallons] or front and rear fuel tanks [65 gallons total]) | – | – | ○ | ○ | – | – | ○ | ○ |
| Shock absorbers – rear; included with 6,250-lb. front axle capacity on Regular Cab 2WD (not available with rear air suspension or LiquidSpring rear suspension prep [incomplete] on Regular Cab 2WD or Crew Cab 2WD) | ○ | ○ | ○ | ○ | ○ | ○ | ○ | ○ |

| | REG CAB 1WT 2WD | CREW CAB 1WT 2WD | REG CAB 1WT 4x4 | CREW CAB 1WT 4x4 | REG CAB 1LT 2WD | CREW CAB 1LT 2WD | REG CAB 1LT 4x4 | CREW CAB 1LT 4x4 |
|---|-----------------|------------------|-----------------|------------------|-----------------|------------------|-----------------|------------------|
| MECHANICAL (CONTINUED) | | | | | | | | |
| Skid plate – steel, frame-mounted (not available with heavy-duty 2250 cold-cranking amp [CCA] triple batteries) | – | – | ○ | ○ | – | – | ○ | ○ |
| StabiliTrak – Electronic Stability Control System with Traction Control; includes Electronic Trailer Sway Control and Hill Start Assist | ● | ● | ● | ● | ● | ● | ● | ● |
| Stabilizer bar – front | ○ | ○ | ○ | ○ | ○ | ○ | ○ | ○ |
| Steering – power (Bosch S2 8014 Plus) | ● | ● | ● | ● | ● | ● | ● | ● |
| Suspension – air control valve, air release valve with switch in cab (requires available rear air suspension; not available with Wrecker/Rollback Vocational Package) | ○ | ○ | – | – | ○ | ○ | – | – |
| Suspension, front – 6,250 lbs. multi-leaf, includes shock absorbers (not available with rear air suspension) | ● | – | – | – | ● | – | – | – |
| – 7,000 lbs. multi-leaf, includes shock absorbers | ○ | ● | – | – | ○ | ● | – | – |
| – 7,500 lbs. multi-leaf, includes shock absorbers | – | – | ● | ● | – | – | ● | ● |
| – 8,000 lbs. multi-leaf, includes shock absorbers | ○ | ○ | – | – | ○ | ○ | – | – |
| Suspension, rear – 11,000 lbs. multi-leaf, vari-rate (not available with rear air suspension) | ● | ● | ● | ● | ● | ● | ● | ● |
| – 13,500 lbs. multi-leaf, vari-rate (not available with rear air suspension on 2WD) | ○ | ○ | ○ | ○ | ○ | ○ | ○ | ○ |
| – 15,500 lbs. multi-leaf, vari-rate (Regular Cab 2WD requires available Vocational Specific Heavy Suspension Package with 141" Wheelbase or 165" Wheelbase; not available with rear air suspension; Regular Cab 4x4 requires available Vocational Specific Heavy Suspension Package with 165" Wheelbase; Crew Cab 2WD not available with rear air suspension) | ○ | ○ | ○ | ○ | ○ | ○ | ○ | ○ |
| – prep (incomplete), 13,500 lbs. (restrictions apply; see your dealer or Fleet representative for details) | ○ | ○ | ○ | ○ | ○ | ○ | ○ | ○ |
| – prep (incomplete), 13,500 lbs. LiquidSpring prep, stacked volume (restrictions apply; see your dealer or Fleet representative for details) | ○ | ○ | ○ | ○ | ○ | ○ | ○ | ○ |
| – prep (incomplete), 15,500 lbs. LiquidSpring prep, single volume (restrictions apply; see your dealer or Fleet representative for details) | ○ | ○ | ○ | ○ | ○ | ○ | ○ | ○ |
| – prep (incomplete), 15,500 lbs. LiquidSpring prep, stacked volume (restrictions apply; see your dealer or Fleet representative for details) | ○ | ○ | ○ | ○ | ○ | ○ | ○ | ○ |
| Suspension, rear air – 12,000 lbs.; includes 5.3" ride height with shock absorbers (requires available air compressor accessory drive and suspension air control valve or Wrecker/Rollback Vocational Package) | ○ | ○ | – | – | ○ | ○ | – | – |
| – 13,500 lbs.; includes 5.3" ride height with shock absorbers (requires available air compressor accessory drive and suspension air control valve or Wrecker/Rollback Vocational Package) | ○ | ○ | – | – | ○ | ○ | – | – |
| – 15,500 lbs.; includes 5.3" ride height with shock absorbers (requires available air compressor accessory drive and suspension air control valve or Wrecker/Rollback Vocational Package) | ○ | ○ | – | – | ○ | ○ | – | – |

SPECIFICATIONS (CONTINUED)

● STANDARD ○ AVAILABLE – NOT AVAILABLE

| | REG CAB 1WT 2WD | CREW CAB 1WT 2WD | REG CAB 1WT 4x4 | CREW CAB 1WT 4x4 | REG CAB 1LT 2WD | CREW CAB 1LT 2WD | REG CAB 1LT 4x4 | CREW CAB 1LT 4x4 |
|---|-----------------|------------------|-----------------|------------------|-----------------|------------------|-----------------|------------------|
| MECHANICAL (CONTINUED) | | | | | | | | |
| Trailer brake controller – integrated | ● | ● | ● | ● | ● | ● | ● | ● |
| Trailing provisions – trailering wire harness only, trailer combined (stop lamp/taillamps/turn signals) connection socket and harness mounted at rear of frame | ● | ● | ● | ● | ● | ● | ● | ● |
| Transmission – Neutral-at-Stop, automatic transmission shifts to Neutral when the service brake is depressed while the vehicle is at a complete stop, and remains in Neutral until the service brake is released | ● | ● | ● | ● | ● | ● | ● | ● |
| Transmission – Highway Service Transmission (MWA), automatic close-ratio 6-speed with double overdrive, Allison® A1700HS (requires available Power Take-Off not installed; requires 14,001-lb., 15,000-lb., 16,000-lb., 16,500-lb., 17,500-lb., 18,000-lb. or 19,500-lb. GVWR and 26,000-lb. GCWR) | ● | ● | ● | ● | ● | ● | ● | ● |
| – Highway Service Transmission (MJ0), automatic close-ratio 6-speed with double overdrive, Allison A1750HS (requires available Power Take-Off not installed; requires 14,001-lb., 15,000-lb., 16,000-lb., 16,500-lb., 17,500-lb., 18,000-lb. or 19,500-lb. GVWR; requires 30,000-lb., 34,000-lb., 35,000-lb. or 37,000-lb. GCWR on 2WD models; requires 30,000-lb. GCWR when ordered with 4.10 rear axle ratio [066] on 2WD models; requires 30,000-lb. or 34,000-lb. GCWR on 4x4 models) | ○ | ○ | ○ | ○ | ○ | ○ | ○ | ○ |
| – Highway Service Transmission (MWB), automatic close-ratio 6-speed with double overdrive, Allison A2700HS (requires available Power Take-Off not installed; requires 21,500-lb., 22,940-lb. or 23,500-lb. GVWR; requires 26,000-lb. GCWR on 2WD models; requires 21,000-lb., 22,500-lb. or 23,000-lb. GVWR and 26,000-lb. GCWR on 4x4 models) | ○ | ○ | ○ | ○ | ○ | ○ | ○ | ○ |
| – Highway Service Transmission (MBX), automatic close-ratio 6-speed with double overdrive, Allison A2750HS (requires available Power Take-Off not installed; requires 21,500-lb., 22,940-lb. or 23,500-lb. GVWR and 30,000-lb. GCWR on 2WD models; requires 21,000-lb., 22,500-lb. or 23,000-lb. GVWR and 30,000-lb. or 34,000-lb. GCWR on 4x4 models) | ○ | ○ | ○ | ○ | ○ | ○ | ○ | ○ |

| | REG CAB 1WT 2WD | CREW CAB 1WT 2WD | REG CAB 1WT 4x4 | CREW CAB 1WT 4x4 | REG CAB 1LT 2WD | CREW CAB 1LT 2WD | REG CAB 1LT 4x4 | CREW CAB 1LT 4x4 |
|--|-----------------|------------------|-----------------|------------------|-----------------|------------------|-----------------|------------------|
| MECHANICAL (CONTINUED) | | | | | | | | |
| Transmission – Rugged Duty Service Transmission (MIU), automatic close-ratio 6-speed with double overdrive, Allison A1700RDS (requires available Power Take-Off engine control provisions; requires 14,001-lb., 15,000-lb., 16,000-lb., 16,500-lb., 17,500-lb., 18,000-lb. or 19,500-lb. GVWR and 26,000-lb. GCWR) | ○ | ○ | ○ | ○ | ○ | ○ | ○ | ○ |
| – Rugged Duty Service Transmission (MI0), automatic close-ratio 6-speed with double overdrive, Allison A1750RDS (requires available Power Take-Off engine control provisions; requires 14,001-lb., 15,000-lb., 16,000-lb., 16,500-lb., 17,500-lb., 18,000-lb. or 19,500-lb. GVWR; requires 30,000-lb., 34,000-lb., 35,000-lb. or 37,000-lb. GCWR on 2WD models; requires 30,000-lb. GCWR when ordered with 4.10 rear axle ratio [066] on 2WD models; requires 30,000-lb. or 34,000-lb. GCWR on 4x4 models) | ○ | ○ | ○ | ○ | ○ | ○ | ○ | ○ |
| – Rugged Duty Service Transmission (MIA), automatic close-ratio 6-speed with double overdrive, Allison A2700RDS (requires available Power Take-Off engine control provisions; requires 21,500-lb., 22,940-lb. or 23,500-lb. GVWR and 26,000-lb. GCWR on 2WD models; requires 21,000-lb., 22,500-lb. or 23,000-lb. GVWR and 26,000-lb. GCWR on 4x4 models) | ○ | ○ | ○ | ○ | ○ | ○ | ○ | ○ |
| – Rugged Duty Service Transmission (MBV), automatic close-ratio 6-speed with double overdrive, Allison A2750RDS (requires available Power Take-Off engine control provisions; requires 21,500-lb., 22,940-lb. or 23,500-lb. GVWR and 30,000-lb., 34,000-lb., 35,000-lb. or 37,000-lb. GCWR on 2WD models; requires 21,000-lb., 22,500-lb. or 23,000-lb. GVWR and 30,000-lb. or 34,000-lb. GCWR on 4x4 models) | ○ | ○ | ○ | ○ | ○ | ○ | ○ | ○ |

SPECIFICATIONS (CONTINUED)

● STANDARD ○ AVAILABLE – NOT AVAILABLE

| | REG CAB 1WT 2WD | CREW CAB 1WT 2WD | REG CAB 1WT 4x4 | CREW CAB 1WT 4x4 | REG CAB 1LT 2WD | CREW CAB 1LT 2WD | REG CAB 1LT 4x4 | CREW CAB 1LT 4x4 |
|--|-----------------|------------------|-----------------|------------------|-----------------|------------------|-----------------|------------------|
| MECHANICAL (CONTINUED) | | | | | | | | |
| Transmission – Emergency Service Transmission (MH1), automatic close-ratio 6-speed with double overdrive, Allison® A1700EVS (requires available Power Take-Off engine control provisions and Emergency Service Package; requires 14,001-lb., 15,000-lb., 16,000-lb., 16,500-lb., 17,500-lb., 18,000-lb. or 19,500-lb. GVWR and 26,000-lb. GCWR) | ○ | ○ | ○ | ○ | ○ | ○ | ○ | ○ |
| – Emergency Service Transmission (MHV), automatic close-ratio 6-speed with double overdrive, Allison A1750EVS (requires available Power Take-Off engine control provisions and Emergency Service Package; requires 14,001-lb., 15,000-lb., 16,000-lb., 16,500-lb., 17,500-lb., 18,000-lb. or 19,500-lb. GVWR; requires 30,000-lb., 34,000-lb., 35,000-lb. or 37,000-lb. GCWR on 2WD models; requires 30,000-lb. GCWR when ordered with 4.10 rear axle ratio [066] on 2WD models; requires 30,000-lb. or 34,000-lb. GCWR on 4x4 models) | ○ | ○ | ○ | ○ | ○ | ○ | ○ | ○ |
| – Emergency Service Transmission (MGO), automatic close-ratio 6-speed with double overdrive, Allison A2700EVS (requires available Power Take-Off engine control provisions and Emergency Service Package; requires 21,500-lb., 22,940-lb. or 23,500-lb. GVWR and 26,000-lb. GCWR on 2WD models; requires 21,000-lb., 22,500-lb. or 23,000-lb. GVWR and 26,000-lb. GCWR on 4x4 models) | ○ | ○ | ○ | ○ | ○ | ○ | ○ | ○ |
| – Emergency Service Transmission (MBY), automatic close-ratio 6-speed with double overdrive, Allison A2750EVS (requires available Power Take-Off engine control provisions and Emergency Service Package; requires 21,500-lb., 22,940-lb. or 23,500-lb. GVWR and 30,000-lb., 34,000-lb., 35,000-lb. or 37,000-lb. GCWR on 2WD models; requires 21,000-lb., 22,500-lb. or 23,000-lb. GVWR and 30,000-lb. or 34,000-lb. GCWR on 4x4 models) | ○ | ○ | ○ | ○ | ○ | ○ | ○ | ○ |

| | REG CAB 1WT 2WD | CREW CAB 1WT 2WD | REG CAB 1WT 4x4 | CREW CAB 1WT 4x4 | REG CAB 1LT 2WD | CREW CAB 1LT 2WD | REG CAB 1LT 4x4 | CREW CAB 1LT 4x4 |
|---|-----------------|------------------|-----------------|------------------|-----------------|------------------|-----------------|------------------|
| MECHANICAL (CONTINUED) | | | | | | | | |
| Transmission – Motorhome Transmission (MIX), automatic close-ratio 6-speed with double overdrive, Allison A1750MH (requires available Power Take-Off engine control provisions and Motorhome Package; requires 14,001-lb., 15,000-lb., 16,000-lb., 16,500-lb., 17,500-lb., 18,000-lb., 19,500-lb. or 21,500-lb. GVWR and 26,000-lb. GCWR) | ○ | ○ | ○ | ○ | ○ | ○ | ○ | ○ |
| – Motorhome Transmission (ME0), automatic close-ratio 6-speed with double overdrive, Allison A1750MH (requires available Power Take-Off engine control provisions and Motorhome Package; requires 14,001-lb., 15,000-lb., 16,000-lb., 16,500-lb., 17,500-lb., 18,000-lb., 19,500-lb. or 21,500-lb. GVWR; requires 30,000-lb., 34,000-lb., 35,000-lb. or 37,000-lb. GCWR on 2WD models; requires 30,000-lb. GCWR when ordered with 4.10 rear axle ratio [066] on 2WD models; requires 30,000-lb. or 34,000-lb. GCWR on 4x4 models) | ○ | ○ | ○ | ○ | ○ | ○ | ○ | ○ |
| – Motorhome Transmission (MF0), automatic close-ratio 6-speed with double overdrive, Allison A2700MH (requires available Power Take-Off engine control provisions and Motorhome Package; requires 22,940-lb. or 23,500-lb. GVWR and 26,000-lb. GCWR on 2WD models; requires 22,500-lb. or 23,000-lb. GVWR and 26,000-lb. GCWR on 4x4 models) | ○ | ○ | ○ | ○ | ○ | ○ | ○ | ○ |
| – Motorhome Transmission (MBW), automatic close-ratio 6-speed with double overdrive, Allison A2750MH (requires available Power Take-Off engine control provisions and Motorhome Package; requires 22,940-lb. or 23,500-lb. GVWR and 30,000-lb., 34,000-lb., 35,000-lb. or 37,000-lb. GCWR on 2WD models; requires 22,500-lb. or 23,000-lb. GVWR and 30,000-lb. or 34,000-lb. GCWR on 4x4 models) | ○ | ○ | ○ | ○ | ○ | ○ | ○ | ○ |
| Transmission – Non-Conforming School Bus/Shuttle Bus Transmission (MA6), automatic close-ratio 6-speed with double overdrive, Allison A1700PTS (requires available Power Take-Off not installed and School Bus [Non-Conforming] Package or Shuttle Bus Package; requires 14,001-lb., 15,000-lb., 16,000-lb., 16,500-lb., 17,500-lb., 18,000-lb. or 19,500-lb. GVWR and 26,000-lb. GCWR) | ○ | ○ | ○ | ○ | ○ | ○ | ○ | ○ |
| – Non-Conforming School Bus/Shuttle Bus Transmission (MB6), automatic close-ratio 6-speed with double overdrive, Allison A2700PTS (requires available Power Take-Off not installed and School Bus [Non-Conforming] Package or Shuttle Bus Package; requires 21,500-lb., 22,940-lb. or 23,500-lb. GVWR; requires 26,000-lb. GCWR on 2WD models; requires 22,500-lb. or 23,000-lb. GVWR and 26,000-lb. GCWR on 4x4 models) | ○ | ○ | ○ | ○ | ○ | ○ | ○ | ○ |

SPECIFICATIONS (CONTINUED)

● STANDARD ○ AVAILABLE – NOT AVAILABLE

| | REG CAB 1WT 2WD | CREW CAB 1WT 2WD | REG CAB 1WT 4x4 | CREW CAB 1WT 4x4 | REG CAB 1LT 2WD | CREW CAB 1LT 2WD | REG CAB 1LT 4x4 | CREW CAB 1LT 4x4 |
|---|-----------------|------------------|-----------------|------------------|-----------------|------------------|-----------------|------------------|
| MECHANICAL (CONTINUED) | | | | | | | | |
| Transmission shift control calibration – FuelSense Performance | ● | ● | ● | ● | ● | ● | ● | ● |
| – FuelSense 2.0 | ○ | ○ | ○ | ○ | ○ | ○ | ○ | ○ |
| Wheelbase – 141" with 60" cab-to-axle (restrictions apply; see your dealer or Fleet representative for details) | ● | – | – | – | ● | – | – | – |
| – 165" with 84" cab-to-axle (restrictions apply; see your dealer or Fleet representative for details) | ○ | – | ● | – | ○ | – | ● | – |
| – 189" with 108" cab-to-axle (restrictions apply; see your dealer or Fleet representative for details) | ○ | – | ○ | – | ○ | – | ○ | – |
| – 201" with 120" cab-to-axle (restrictions apply; see your dealer or Fleet representative for details) | ○ | – | ○ | – | ○ | – | ○ | – |
| – 219" with 138" cab-to-axle (restrictions apply; see your dealer or Fleet representative for details) | ○ | – | ○ | – | ○ | – | ○ | – |
| – 231" with 150" cab-to-axle (restrictions apply; see your dealer or Fleet representative for details) | ○ | – | ○ | – | ○ | – | ○ | – |
| – 243" with 162" cab-to-axle (restrictions apply; see your dealer or Fleet representative for details) | ○ | – | ○ | – | ○ | – | ○ | – |
| Wheelbase – 175" with 60" cab-to-axle (restrictions apply; see your dealer or Fleet representative for details) | – | ● | – | ● | – | ● | – | ● |
| – 199" with 84" cab-to-axle (restrictions apply; see your dealer or Fleet representative for details) | – | ○ | – | ○ | – | ○ | – | ○ |
| – 219" with 104" cab-to-axle (restrictions apply; see your dealer or Fleet representative for details) | – | ○ | – | ○ | – | ○ | – | ○ |
| – 235" with 120" cab-to-axle (restrictions apply; see your dealer or Fleet representative for details) | – | ○ | – | ○ | – | ○ | – | ○ |

| | REG CAB 1WT 2WD | CREW CAB 1WT 2WD | REG CAB 1WT 4x4 | CREW CAB 1WT 4x4 | REG CAB 1LT 2WD | CREW CAB 1LT 2WD | REG CAB 1LT 4x4 | CREW CAB 1LT 4x4 |
|--|-----------------|------------------|-----------------|------------------|-----------------|------------------|-----------------|------------------|
| EXTERIOR | | | | | | | | |
| Antenna – fixed mast | ● | ● | ● | ● | ● | ● | ● | ● |
| – antenna equipment including additional antenna, cable and ground plate (requires available OnStar ^{®1} and Chevrolet Infotainment System ² with 7-inch diagonal color touch-screen on 1WT) | ○ | ○ | ○ | ○ | ○ | ○ | ○ | ○ |
| Assist steps | ● | ● | ● | ● | ● | ● | ● | ● |
| – aluminum | ○ | ○ | ○ | ○ | ○ | ○ | ○ | ○ |
| Backup alarm | ○ | ○ | ○ | ○ | ○ | ○ | ○ | ○ |
| Bumper – front, Black | ● | ● | ● | ● | ● | ● | ● | ● |
| – front, chrome | ○ | ○ | ○ | ○ | ○ | ○ | ○ | ○ |
| – front, Gray | ○ | ○ | ○ | ○ | ○ | ○ | ○ | ○ |
| – front with 4" extension | ○ | ○ | ○ | ○ | ○ | ○ | ○ | ○ |
| – front bumper delete | ○ | ○ | ○ | ○ | ○ | ○ | ○ | ○ |
| Daytime running lamps – automatic on/off with automatic delay | ● | ● | ● | ● | ● | ● | ● | ● |
| Door handles – Black | ● | ● | ● | ● | ● | ● | ● | ● |
| – chrome | ○ | ○ | ○ | ○ | ○ | ○ | ○ | ○ |
| Electrical provisions – rear of frame, upfitter, body builder wiring; includes sealed connectors for taillamp/turn signal/marker/backup/accessory power/ground and sealed connector for stop lamp/turn signal | ○ | ○ | ○ | ○ | ○ | ○ | ○ | ○ |
| – rear of frame, upfitter, body builder wiring; includes sealed connectors for taillamp/turn signal/marker/backup/accessory power/ground and sealed connector for stop lamp/turn signal | ○ | ○ | ○ | ○ | ○ | ○ | ○ | ○ |
| Fog lamps – halogen | ○ | ○ | ○ | ○ | ○ | ○ | ○ | ○ |
| Glass – solar-absorbing tinted | ● | ● | ● | ● | ● | ● | ● | ● |
| – deep-tinted behind front doors | ○ | ○ | ○ | ○ | ○ | ○ | ○ | ○ |
| Grille – Black | ● | ● | ● | ● | ● | ● | ● | ● |
| – chrome | ○ | ○ | ○ | ○ | ○ | ○ | ○ | ○ |

¹ When you select a monthly plan within 30 days of activating your 1-month trial, you'll receive the next 2 months of the plan you select at no additional charge when you associate an approved payment method on file to your account and authorize recurring payments for your service plan. The amount and frequency of each recurring payment is based upon the service(s) and payment interval(s) you select from the options provided. After the trial expires, OnStar will automatically bill your payment method monthly at then-current standard monthly rates. Plans containing 4G LTE data will be billed every 30 days by AT&T. You may cancel at any time by pushing your blue OnStar button or calling 1-888-466-7827. May not be combined with other offers or retroactively applied. Offer subject to change. ² Chevrolet Infotainment System functionality varies by model. Full functionality requires compatible Bluetooth and smartphone, and USB connectivity for some devices.

SPECIFICATIONS (CONTINUED)

● STANDARD ○ AVAILABLE – NOT AVAILABLE

| | REG CAB 1WT 2WD | CREW CAB 1WT 2WD | REG CAB 1WT 4x4 | CREW CAB 1WT 4x4 | REG CAB 1LT 2WD | CREW CAB 1LT 2WD | REG CAB 1LT 4x4 | CREW CAB 1LT 4x4 |
|--|-----------------|------------------|-----------------|------------------|-----------------|------------------|-----------------|------------------|
| EXTERIOR (CONTINUED) | | | | | | | | |
| Grille guard screen – insect protection; mounted behind grille | ● | ● | ● | ● | ● | ● | ● | ● |
| – stone protection; mounted to bumper | ○ | ○ | ○ | ○ | ○ | ○ | ○ | ○ |
| Headlamps – halogen projector-beam | ● | ● | ● | ● | ● | ● | ● | ● |
| – auxiliary harness, 3 feet for headlamps and turn signals | ○ | ○ | ○ | ○ | ○ | ○ | ○ | ○ |
| Horn – single-note | ● | ● | ● | ● | ● | ● | ● | ● |
| – dual-note | ○ | ○ | ○ | ○ | ○ | ○ | ○ | ○ |
| Lamps – cargo area, cab-mounted with switch on center switch bank | ● | ● | ● | ● | ● | ● | ● | ● |
| – rear, stop lamp/turn signal/backup (1-piece assembly) with license plate light | ● | ● | ● | ● | ● | ● | ● | ● |
| – rear, LED stop lamp/turn signal and license plate, with incandescent backup lamps | ○ | ○ | ○ | ○ | ○ | ○ | ○ | ○ |
| – taillamp wiring harness provisions; includes wiring for standard left and right taillamps, separate 8 feet of extra cable wiring for left and right body-mounted taillamps | ○ | ○ | ○ | ○ | ○ | ○ | ○ | ○ |
| Mirrors – vertical camper-style, Black caps, manual-folding and manual-extending with lower convex spotter glass | ● | ● | ● | ● | – | – | – | – |
| – vertical trailing, Black caps, heated upper glass, power-adjustable, manual-folding and manual-extending with lower convex mirrors and integrated turn signal indicators (requires available power windows on Regular Cab 1WT) | ○ | ○ | ○ | ○ | ● | ● | ● | ● |
| – chrome caps (requires available heated vertical trailing mirrors on 1WT) | ○ | ○ | ○ | ○ | ○ | ○ | ○ | ○ |
| Mud flaps – front | ○ | ○ | ○ | ○ | ○ | ○ | ○ | ○ |
| Recovery hooks ¹ – front, frame-mounted, Black | ○ | ○ | ○ | ○ | ○ | ○ | ○ | ○ |
| Roof marker lamps – Smoked Amber | ● | ● | ● | ● | ● | ● | ● | ● |
| – provision for cab roof-mounted lamp/beacon, provides an overhead console-mounted switch and electrical wiring tucked beneath the headliner for a body upfitter to connect a body-mounted warning or emergency lamp | ○ | ○ | ○ | ○ | ○ | ○ | ○ | ○ |

| | REG CAB 1WT 2WD | CREW CAB 1WT 2WD | REG CAB 1WT 4x4 | CREW CAB 1WT 4x4 | REG CAB 1LT 2WD | CREW CAB 1LT 2WD | REG CAB 1LT 4x4 | CREW CAB 1LT 4x4 |
|--|-----------------|------------------|-----------------|------------------|-----------------|------------------|-----------------|------------------|
| EXTERIOR (CONTINUED) | | | | | | | | |
| Tires – front 225/70R19.5G highway Goodyear® (XDK) with maximum axle load of 7,940 lbs. (requires 225/70R19.5G highway Goodyear rear tires [YAL] with maximum axle load of 15,000 lbs. or 225/70R19.5G traction Goodyear rear tires [YMF] with maximum axle load of 15,000 lbs.) | ● | ● | ● | ● | ● | ● | ● | ● |
| – front 225/70R19.5G highway Continental® (XDL) with maximum axle load of 7,940 lbs. (requires available 225/70R19.5G highway Continental rear tires [YAM] with maximum axle load of 15,000 lbs. or 225/70R19.5G traction Goodyear rear tires [YHD] with maximum axle load of 15,000 lbs.) | ○ | ○ | ○ | ○ | ○ | ○ | ○ | ○ |
| – front 225/70R19.5G traction Continental (XHD) with maximum axle load of 7,940 lbs. (requires available 225/70R19.5G traction Continental rear tires [YHD]) | ○ | ○ | ○ | ○ | ○ | ○ | ○ | ○ |
| – front 225/70R19.5G traction Goodyear (XMF) with maximum axle load of 7,940 lbs. (requires available 225/70R19.5G traction Goodyear rear tires [YMF]) | ○ | ○ | ○ | ○ | ○ | ○ | ○ | ○ |
| – front 225/70R19.5H highway Continental (XDV) with maximum axle load of 8,000 lbs. (requires available 225/70R19.5H highway Continental rear tires [YAP]) | ○ | ○ | ○ | ○ | ○ | ○ | ○ | ○ |
| Tires – rear 225/70R19.5G highway Goodyear (YAL) with maximum axle load of 15,000 lbs. | ● | ● | ● | ● | ● | ● | ● | ● |
| – rear 225/70R19.5G highway Continental (YAM) with maximum axle load of 15,000 lbs. | ○ | ○ | ○ | ○ | ○ | ○ | ○ | ○ |
| – rear 225/70R19.5G traction Continental (YHD) with maximum axle load of 15,000 lbs. | ○ | ○ | ○ | ○ | ○ | ○ | ○ | ○ |
| – rear 225/70R19.5G traction Goodyear (YMF) with maximum axle load of 15,000 lbs. | ○ | ○ | ○ | ○ | ○ | ○ | ○ | ○ |
| – rear 225/70R19.5H highway Continental (YAP) with maximum axle load of 15,500 lbs. (requires available 225/70R19.5H highway Continental front tires [XDV]) | ○ | ○ | ○ | ○ | ○ | ○ | ○ | ○ |
| Tire – spare 225/70R19.5G highway Goodyear (ZBK); includes rim wrench and handle tool kit (requires 225/70R19.5G highway Goodyear front tires [XDK] or 225/70R19.5G highway Goodyear rear tires [YAL]) | ○ | ○ | ○ | ○ | ○ | ○ | ○ | ○ |
| – spare 225/70R19.5G highway Continental (ZBR); includes rim wrench and handle tool kit (requires available 225/70R19.5G highway Continental front tires [XDL] or 225/70R19.5G highway Continental rear tires [YAM]) | ○ | ○ | ○ | ○ | ○ | ○ | ○ | ○ |
| – spare 225/70R19.5G traction Continental (ZHD); includes rim wrench and handle tool kit (requires available 225/70R19.5G traction Continental front tires [XHD] or 225/70R19.5G traction Continental rear tires [YHD]) | ○ | ○ | ○ | ○ | ○ | ○ | ○ | ○ |
| – spare 225/70R19.5G traction Goodyear (ZMF); includes rim wrench and handle tool kit (requires available 225/70R19.5G traction Goodyear rear tires [YMF]) | ○ | ○ | ○ | ○ | ○ | ○ | ○ | ○ |
| – spare 225/70R19.5H highway Continental (ZBC); includes rim wrench and handle tool kit (requires available 225/70R19.5H highway Continental front tires [XDV] or 225/70R19.5G highway Continental rear tires [YAP]) | ○ | ○ | ○ | ○ | ○ | ○ | ○ | ○ |

¹ To avoid the risk of injury, never use recovery hooks to tow a vehicle. For more information, see the Recovery Hooks section of your Owner's Manual.

SPECIFICATIONS (CONTINUED)

● STANDARD ○ AVAILABLE – NOT AVAILABLE

| | REG CAB 1WT 2WD | CREW CAB 1WT 2WD | REG CAB 1WT 4x4 | CREW CAB 1WT 4x4 | REG CAB 1LT 2WD | CREW CAB 1LT 2WD | REG CAB 1LT 4x4 | CREW CAB 1LT 4x4 |
|---|-----------------|------------------|-----------------|------------------|-----------------|------------------|-----------------|------------------|
| EXTERIOR (CONTINUED) | | | | | | | | |
| Tire valve cap – Haltec flo-thru | ○ | ○ | ○ | ○ | ○ | ○ | ○ | ○ |
| – Alligaro V2B flo-thru | ○ | ○ | ○ | ○ | ○ | ○ | ○ | ○ |
| Tool kit – rim wrench and handle | ○ | ○ | ○ | ○ | ○ | ○ | ○ | ○ |
| Wheels – 19.5" x 6.75" steel, Black-painted (PWQ) | ● | ● | ● | ● | ● | ● | ● | ● |
| – 19.5" x 6.75" steel, Grey-painted (PWR) | ○ | ○ | ○ | ○ | ○ | ○ | ○ | ○ |
| – 19.5" x 6.75" steel, White-painted (PWS) | ○ | ○ | ○ | ○ | ○ | ○ | ○ | ○ |
| – 19.5" x 6.75" aluminum with dura-bright finish (PMW) | ○ | ○ | ○ | ○ | ○ | ○ | ○ | ○ |
| Wheel – spare, 19.5" x 6.75" steel, Black-painted (requires available spare tire and painted-steel wheels [PWQ, PWR or PWS]) | ○ | ○ | ○ | ○ | ○ | ○ | ○ | ○ |
| – spare, aluminum with dura-bright finish (requires available spare tire and aluminum wheels [PMW]) | ○ | ○ | ○ | ○ | ○ | ○ | ○ | ○ |
| Window – rear window delete (requires available Shuttle Bus Package, School Bus [Non-Conforming] Package or Emergency Service Package) | ○ | ○ | ○ | ○ | ○ | ○ | ○ | ○ |
| Work light circuit – additional wire for utility light at rear of frame | ○ | ○ | ○ | ○ | ○ | ○ | ○ | ○ |
| INTERIOR | | | | | | | | |
| Air conditioning – single-zone | ● | ● | ● | ● | ● | ● | ● | ● |
| – provisions for auxiliary air conditioning compressor; includes additional bare air conditioning compressor mounted to the engine accessory drive; upfitter responsible for air conditioning hose connections, plumbing and control circuit (not included) | ○ | ○ | ○ | ○ | ○ | ○ | ○ | ○ |
| Assist handles – driver and front passenger, A-pillar | ● | ● | ● | ● | ● | ● | ● | ● |
| Center console – floor-mounted, with cup holders, cell phone storage, power cord management and hanging file holder capability (requires available front bucket seats) | – | – | – | – | – | ○ | – | ○ |
| Cruise control – electronic with Set and Resume Speed, steering wheel-mounted | ● | ● | ● | ● | ● | ● | ● | ● |
| Defogger – rear-window | ○ | ○ | ○ | ○ | ○ | ○ | ○ | ○ |
| Door locks – power programmable with lockout protection | ● | ● | ● | ● | ● | ● | ● | ● |

| | REG CAB 1WT 2WD | CREW CAB 1WT 2WD | REG CAB 1WT 4x4 | CREW CAB 1WT 4x4 | REG CAB 1LT 2WD | CREW CAB 1LT 2WD | REG CAB 1LT 4x4 | CREW CAB 1LT 4x4 |
|---|-----------------|------------------|-----------------|------------------|-----------------|------------------|-----------------|------------------|
| INTERIOR (CONTINUED) | | | | | | | | |
| Driver Information Center – 3.5-inch diagonal monochromatic display | ● | ● | ● | ● | – | – | – | – |
| – 4.2-inch diagonal color display and driver personalization | – | – | – | – | ● | ● | ● | ● |
| Floor covering – rubberized-vinyl, Graphite-color | ● | ● | ● | ● | ● | ● | ● | ● |
| Instrument cluster – 6-gauge with speedometer, fuel level, engine temperature, tachometer, voltage and oil pressure | ● | ● | ● | ● | ● | ● | ● | ● |
| Key system – two spare keys | ○ | ○ | ○ | ○ | ○ | ○ | ○ | ○ |
| Mirror – rearview, manual day/night | ● | ● | ● | ● | – | – | – | – |
| – rearview, auto-dimming | – | – | – | – | ● | ● | ● | ● |
| – rearview mirror delete (requires available OnStar delete on 1WT; requires available OnStar delete and Fleet or Government order on 1LT) | ○ | ○ | ○ | ○ | ○ | ○ | ○ | ○ |
| Power outlet – 110-volt | ○ | ○ | ○ | ○ | ○ | ○ | ○ | ○ |
| Remote Keyless Entry | ○ | ○ | ○ | ○ | ● | ● | ● | ● |
| Remote vehicle starter system – includes theft-deterrent system | – | – | – | – | ○ | ○ | ○ | ○ |
| Seat belts – Black | ● | ● | ● | ● | ● | ● | ● | ● |
| – Orange (center seat belt ships loose) | ○ | ○ | ○ | ○ | ○ | ○ | ○ | ○ |
| – Red (center seat belt ships loose) | ○ | ○ | ○ | ○ | ○ | ○ | ○ | ○ |
| Steering column – manual tilt-wheel | ● | ● | ● | ● | ● | ● | ● | ● |
| Steering wheel – urethane | ● | ● | ● | ● | – | – | – | – |
| – leather-wrapped with cruise and audio controls | – | – | – | – | ● | ● | ● | ● |
| Upfitter switches – four 30-amp circuits for installation of aftermarket accessories ¹ | ● | ● | ● | ● | ● | ● | ● | ● |
| Visors – driver and front passenger, vinyl | ● | ● | ● | ● | – | – | – | – |
| – driver and front passenger illuminated vanity mirrors | – | – | – | – | ● | ● | ● | ● |
| Windows – manual driver and front passenger | ● | – | ● | – | – | – | – | – |
| – power with driver express-up/-down, all others express-down (requires available heated power-adjustable vertical trailing mirrors on Regular Cab 1WT) | ○ | ● | ○ | ● | ● | ● | ● | ● |

¹ Equipment from independent suppliers is not covered by the GM New Vehicle Limited Warranty. GM is not responsible for the safety or quality of independent supplier alterations.

SPECIFICATIONS (CONTINUED)

● STANDARD ○ AVAILABLE – NOT AVAILABLE

| | REG CAB 1WT 2WD | CREW CAB 1WT 2WD | REG CAB 1WT 4x4 | CREW CAB 1WT 4x4 | REG CAB 1LT 2WD | CREW CAB 1LT 2WD | REG CAB 1LT 4x4 | CREW CAB 1LT 4x4 |
|--|-----------------|------------------|-----------------|------------------|-----------------|------------------|-----------------|------------------|
| SEATING | | | | | | | | |
| Seats – front 40/20/40 split-bench with covered storage armrest; fixed lumbar (vinyl) or manual driver lumbar adjuster (cloth) | ● | ● | ● | ● | – | – | – | – |
| – front 40/20/40 split-bench with covered storage armrest, storage pockets and driver lumbar adjuster; includes driver 10-way power seat adjuster (requires available Chevrolet Infotainment System ¹ with 7-inch diagonal color touch-screen on 1WT) | ○ | ○ | ○ | ○ | ● | ● | ● | ● |
| – front bucket seats with center floor console; driver 10-way power seat adjuster and front passenger 6-way power seat adjuster | – | – | – | – | – | ○ | – | ○ |
| Seat – passenger seat delete, removes 20/40 section of front passenger and center seat section; all exposed floor area will remain untrimmed; not available with Jet Black cloth trim (requires available driver-only airbags ² on 1WT; requires available driver-only airbags ² and front 40/20/40 split-bench seat on 1LT) | ○ | – | ○ | – | ○ | – | ○ | – |
| – rear 60/40 folding bench (includes child seat top tether anchor) | – | ● | – | ● | – | ● | – | ● |
| – rear seat delete | – | ○ | – | ○ | – | ○ | – | ○ |

| | REG CAB 1WT 2WD | CREW CAB 1WT 2WD | REG CAB 1WT 4x4 | CREW CAB 1WT 4x4 | REG CAB 1LT 2WD | CREW CAB 1LT 2WD | REG CAB 1LT 4x4 | CREW CAB 1LT 4x4 |
|---|-----------------|------------------|-----------------|------------------|-----------------|------------------|-----------------|------------------|
| ENTERTAINMENT | | | | | | | | |
| Audio – AM/FM stereo with 4.2-inch diagonal color display, USB port ³ and auxiliary input jack (requires front 40/20/40 split-bench seat) | ● | ● | ● | ● | – | – | – | – |
| – Chevrolet Infotainment System ¹ with 7-inch diagonal color touch-screen, AM/FM stereo and Bluetooth ⁴ audio streaming ⁴ | ○ | ○ | ○ | ○ | – | – | – | – |
| – Chevrolet Infotainment System ¹ with 8-inch diagonal color touch-screen, AM/FM stereo, Bluetooth audio streaming ⁴ and voice-activated technology for radio and phone; shop with the ability to browse, select and install apps to your vehicle, including Pandora, iHeartRadio, The Weather Channel and more | – | – | – | – | ● | ● | ● | ● |
| – single-slot CD/MP3 player (requires AM/FM stereo with 4.2-inch diagonal color display on 1WT) | ○ | ○ | ○ | ○ | ● | ● | ● | ● |
| – 4-speaker system | ● | – | ● | – | – | – | – | – |
| – 6-speaker system (requires available Chevrolet Infotainment System ¹ with 7-inch diagonal color touch-screen on Regular Cab 1WT) | ○ | ● | ○ | ● | ● | ● | ● | ● |
| SiriusXM ⁵ – Platinum Plan trial subscription (requires available OnStar ⁶ and Chevrolet Infotainment System ¹ with 7-inch diagonal color touch-screen on 1WT) | ○ | ○ | ○ | ○ | ● | ● | ● | ● |
| – SiriusXM delete (requires Fleet or Government order type and OnStar delete) | ● | ● | ● | ● | ○ | ○ | ○ | ○ |
| Available Wi-Fi [®] Hotspot ⁷ for up to seven devices, includes 1 month of unlimited data (requires available OnStar ⁶ and Chevrolet Infotainment System ¹ with 7-inch diagonal color touch-screen on 1WT) | ○ | ○ | ○ | ○ | ● | ● | ● | ● |
| Chevrolet Connected Access ⁸ with up to 10 years of standard connectivity, which currently enables features such as Vehicle Diagnostics and Dealer Maintenance Notification (requires available OnStar ⁶ and Chevrolet Infotainment System ¹ with 7-inch diagonal color touch-screen on 1WT) | ○ | ○ | ○ | ○ | ● | ● | ● | ● |
| Wireless charging ⁹ (requires available front bucket seats) | – | – | – | – | – | ○ | – | ○ |

¹ Chevrolet Infotainment System functionality varies by model. Full functionality requires compatible Bluetooth and smartphone, and USB connectivity for some devices. ² A NOTE ON CHILD SAFETY: Always use seat belts and the correct child restraint for your child's age and size, even with airbags. Even in vehicles equipped with the Passenger Sensing System, children are safer when properly secured in a rear seat in the appropriate infant, child or booster seat. Never place a rear-facing infant restraint in the front seat of any vehicle equipped with an active frontal airbag. See your vehicle Owner's Manual and the child safety seat instructions for more safety information. ³ Not compatible with all devices. ⁴ Go to my.chevrolet.com/learnAbout/bluetooth to find out which phones are compatible with the vehicle. Full Bluetooth feature functionality varies by device, model and software version. ⁵ If you decide to continue service after your trial, your selected subscription plan will automatically renew thereafter. You will be charged at then-current rates. Fees and taxes apply. To cancel you must call SiriusXM at 1-866-635-2349. See SiriusXM Customer Agreement for complete terms at siriusxm.com. All fees and programming subject to change. ⁶ When you select a monthly plan within 30 days of activating your 1-month trial, you'll receive the next 2 months of the plan you select at no additional charge when you associate an approved payment method on file to your account and authorize recurring payments for your service plan. The amount and frequency of each recurring payment is based upon the service(s) and payment interval(s) you select from the options provided. After the trial expires, OnStar will automatically bill your payment method monthly at then-current standard monthly rates. Plans containing 4G LTE data will be billed every 30 days by AT&T. You may cancel at any time by pushing your blue OnStar button or calling 1-888-466-7827. May not be combined with other offers or retroactively applied. Offer subject to change. ⁷ Service varies with conditions and location. Requires active service and paid AT&T data plan. Visit onstar.com for details and limitations. Availability subject to change. ⁸ Standard connectivity available only to original purchaser for up to 10 years. Connected Access services are subject to change. Does not include emergency or security services. Diagnostic capabilities vary by model and service plan. Message and data rates may apply. Requires contact method on file and enrollment to receive alerts. Not all issues will deliver alerts. Visit onstar.com for details and limitations. ⁹ The system wirelessly charges one compatible mobile device. Some phones have built-in wireless charging technology and others require a special adaptor/back cover. To check for phone or other device compatibility, see my.chevrolet.com/learn or consult your carrier.

PACKAGES

● STANDARD ○ AVAILABLE – NOT AVAILABLE

| | REG CAB 1WT 2WD | CREW CAB 1WT 2WD | REG CAB 1WT 4x4 | CREW CAB 1WT 4x4 | REG CAB 1LT 2WD | CREW CAB 1LT 2WD | REG CAB 1LT 4x4 | CREW CAB 1LT 4x4 |
|---|-----------------|------------------|-----------------|------------------|-----------------|------------------|-----------------|------------------|
| MECHANICAL | | | | | | | | |
| Aerial Work Platform Vocational Package | ○ | ○ | ○ | ○ | ○ | ○ | ○ | ○ |
| Provides calibrations specific to chassis with an upfit consisting of an aerial lift, bucket or boom lift (requires available Power Take-Off engine control provisions) (not available with Shuttle Bus Package, School Bus [Non-Conforming] Package, Motorhome Package or Emergency Service Package) | | | | | | | | |
| Emergency Service Package | ○ | ○ | ○ | ○ | ○ | ○ | ○ | ○ |
| Dual alternators, backup alarm and wiring provisions mounted at rear of frame (requires available limited-slip axle [G86], manual regeneration DPF diesel particulate filter and Emergency Service Transmission [MBY, MH1, MHV or MG0]) | | | | | | | | |
| Motorhome Package | ○ | ○ | ○ | ○ | ○ | ○ | ○ | ○ |
| Requires available Motorhome Transmission (MBW, ME0, MIX or MF0) | | | | | | | | |
| School Bus (Non-Conforming) Package | ○ | ○ | ○ | ○ | ○ | ○ | ○ | ○ |
| Requires available Power Take-Off not installed and Non-Conforming School Bus/ Shuttle Bus Transmission (MA6 or MB6) | | | | | | | | |
| Shuttle Bus Package | ○ | ○ | ○ | ○ | ○ | ○ | ○ | ○ |
| Requires available Power Take-Off not installed and Non-Conforming School Bus/ Shuttle Bus Transmission (MA6 or MB6) | | | | | | | | |
| Snow Plow Prep Package | ○ | ○ | ○ | ○ | ○ | ○ | ○ | ○ |
| Auxiliary harness for headlamps and turn signals, 220-amp alternator, forward lamp wiring harness and provision for cab roof-mounted lamp/beacon | | | | | | | | |
| Vocational Specific Heavy Suspension Package | ○ | – | ○ | – | ○ | – | ○ | – |
| For 141" or 165" Wheelbase trucks only; allows the selection of 7,000-lb. or 8,000-lb. front axles and/or 15,500-lb. rear spring suspension on trucks that will be upfitted with the following vocational bodies: utility/service bodies, aerial lift/ bucket bodies, front plow/rear spreader applications or landscape dump bodies (Regular Cab 2WD requires 141" Wheelbase or 165" Wheelbase and 7,000-lb. front axle/7,000-lb. front suspension or 8,000-lb. front axle/8,000-lb. front suspension and/or 15,500-lb. rear suspension; Regular Cab 4x4 requires 165" Wheelbase and 15,500-lb. rear suspension) | | | | | | | | |
| Wrecker/Rollback Vocational Package | ○ | ○ | – | – | ○ | ○ | – | – |
| Requires available 12,000-lb., 13,500-lb. or 15,500-lb. rear air suspension; not available with suspension air control valve | | | | | | | | |

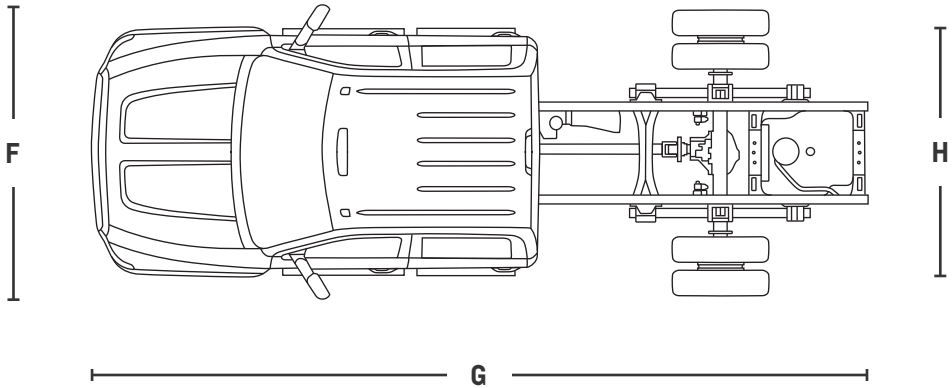
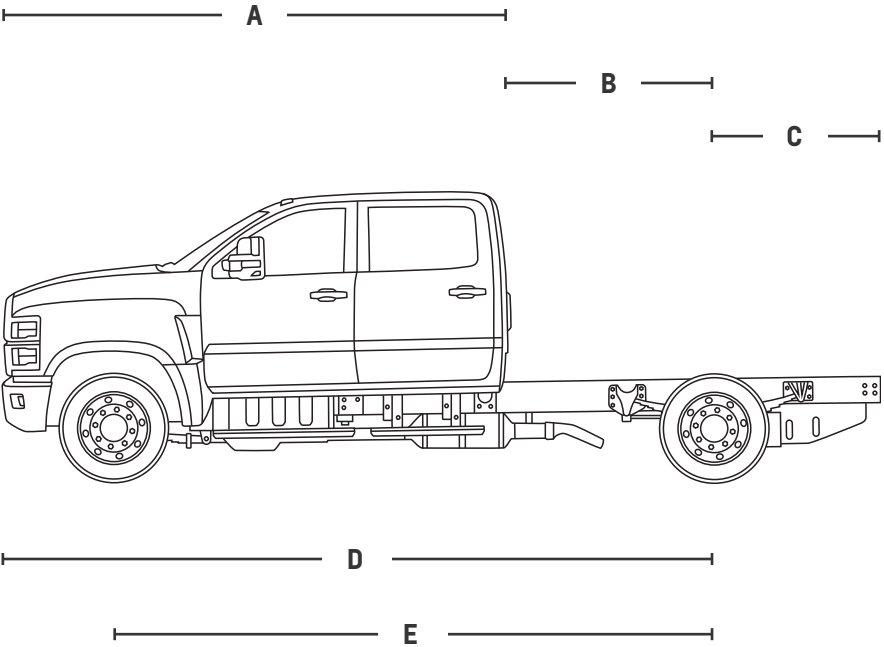
SPECIFICATIONS (CONTINUED)

MAXIMUM CAPACITIES

| FUEL TANK (approximate) | REGULAR CAB | CREW CAB |
|----------------------------|-------------|------------|
| Standard | 40 gallons | 40 gallons |
| Available - front | 25 gallons | 25 gallons |
| Available - front and rear | 65 gallons | 65 gallons |

DIMENSIONS

| | REGULAR CAB | CREW CAB |
|--|----------------|----------------|
| A - Front bumper to back of cab | 115.5" | 149.5" |
| B - Cab to axle | 60.0" - 162.0" | 60.0" - 120.0" |
| C - Axle to end of frame | 49.0" - 91.0" | 49.0" - 75.0" |
| D - Front bumper to axle | 34.3" | 34.3" |
| E - Wheelbase | 141.0"-243.0" | 175.0"-235.0" |
| F - Overall cab height | 82.5"-86.4" | 82.7"-86.2" |
| G - Overall vehicle length | 224.5"-360.0" | 258.7"-344.2" |
| H - Overall vehicle width | 84.0" | 84.0" |
| Head room (front/rear) | 42.8"/- | 42.8"/40.5" |
| Leg room (front/rear) | 45.3"/- | 45.3"/40.9" |
| Shoulder room (front/rear) | 66.0"/- | 64.8"/64.3" |
| Hip room (front/rear) | 60.7"/- | 60.7"/60.2" |



ALWAYS READY FOR OVERTIME.

You know what Chevrolet Commercial Vehicles call 9 to 5? A decent start. Our lineup is ready to make light work of a long week, led by the powerful and dependable Silverado 1500 and Silverado HD, plus Silverado 3500 HD Chassis Cab. And let's not forget the strength of medium-duty Silverado 4500 HD/5500 HD/6500 HD Chassis Cabs, the maneuverability of the Low Cab Forward series and the utility of Express Vans. It all adds up to an unbeatable crew that never stops working.



**COMMERCIAL
VEHICLES**



COMMERCIAL PROGRAMS

ONSTAR BUSINESS SOLUTIONS

OnStar Business Solutions is a family of products that offers insight to find efficiencies, foresight to make better decisions, and confidence in knowing your people and your assets are protected and connected. Learn more at onstar.com/BusinessSolutions.

Manage the way your business moves with OnStar Vehicle Insights™¹ by OnStar Business Solutions. You can see your fleet in real time and receive actionable information to make more informed decisions. Learn more at onstarvehicleinsights.com.

BUSINESS CHOICE

This program² can give you the best value on the vehicles you count on. Business Choice includes a cash allowance on either GM Accessories or Upfits³, and you can even add the most current retail offers to your deal. Learn more at chevrolet.com/business-choice-offers.

BUSINESS ELITE DEALERS

These specialized dealers provide the know-how to help you select the right vehicles for the job. Plus, every Business Elite service department has the facilities, tools and technicians for your needs. Learn more at chevrolet.com/commercial/business-elite.



¹ Terms apply. Available on select properly equipped 2015 model year and newer GM vehicles (excludes Volt, Low Cab Forward Trucks and GM vehicles built without OnStar Hardware, which includes but is not limited to select base Chevrolet and GMC trucks). Requires an active connected vehicle services plan. Fees, services, and availability subject to change without notice. Applicable taxes not included. Does not include emergency or security services. Diagnostics capabilities vary by vehicle model. Not all issues will deliver alerts. See onstarvehicleinsights.com for details and limitations. ² The 2022 Business Choice Program is valid from September 10, 2021, to January 2, 2023. Customer must purchase or lease their vehicle during the program period and be prepared to provide proof of business ownership. Vehicle must be used in the day-to-day operations of the business and not solely for transportation purposes. This program may not be compatible with other offers or incentive programs. Consult with your GM dealer for program compatibility and other restrictions. For complete program requirements, including information regarding offers, vehicles, equipment, options, warranties, and ordering, consult your GM dealer. To qualify, vehicle must be used in the day-to-day operations of your business and not solely for personal/non-business-related transportation purposes. Proof of business ownership may be required. Not available with some other offers. For complete program requirements, including information regarding offers, vehicles, equipment, options, warranties, and ordering, consult your GM dealer. Take delivery by January 2, 2023. See dealer for details. ³ Equipment from independent suppliers is not covered by the GM New Vehicle Limited Warranty. GM is not responsible for the safety or quality of independent supplier alterations.

IMPORTANT INFORMATION



EVERY STEP OF THE WAY.

You may be discovering Chevrolet through a personalized online shopping experience or enjoying every year of vehicle ownership. Either way, we're committed to providing the tools and programs you need to help you get the most out of your journey.

Chevy MyWay¹ >

Engage in a real-time virtual video experience with a Chevy product specialist.

Chevrolet Complete Care >

Enjoy an owner benefit program that provides excellent service and support from day one.

Limited Warranty Coverage >

Discover all the ways Chevrolet is committed to providing an excellent ownership experience.



GM, the GM logo, Chevrolet, the Chevrolet logo, and the slogans, emblems, vehicle model names, vehicle body designs and other marks appearing in this brochure are the trademarks and/or service marks of General Motors, its subsidiaries, affiliates or licensors. ©2022 OnStar LLC. All rights reserved. Sirius, XM, SiriusXM and all related marks and logos are trademarks of Sirius XM Radio Inc. The Bluetooth word mark is a registered trademark owned by Bluetooth SIG, Inc., and any use of such mark by Chevrolet is under license. Continental is a registered trademark of Continental Tire the Americas, LLC. Goodyear is a registered trademark of The Goodyear Tire & Rubber Company.

©2022 General Motors. All rights reserved. April 2022

FIND NEW ROADS™

CHEVROLET.COM

¹ Chevy MyWay is available to anyone over 18 in the United States to access and experience via chevrolet.com/myway.