

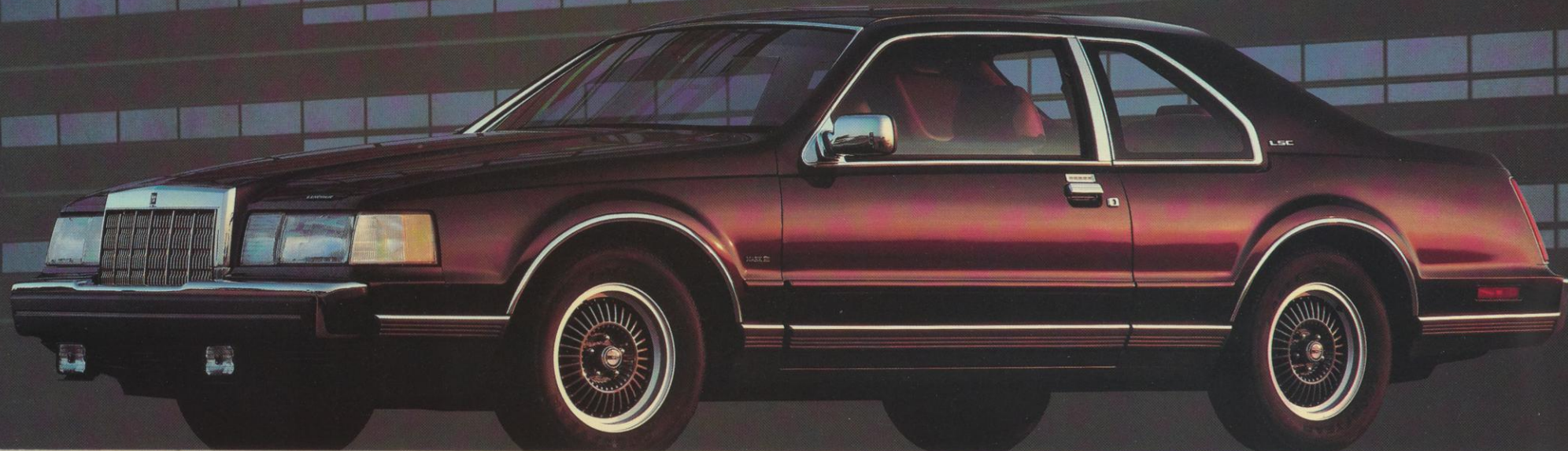
1988
LINCOLN MARK VII
LINCOLN TOWN CAR



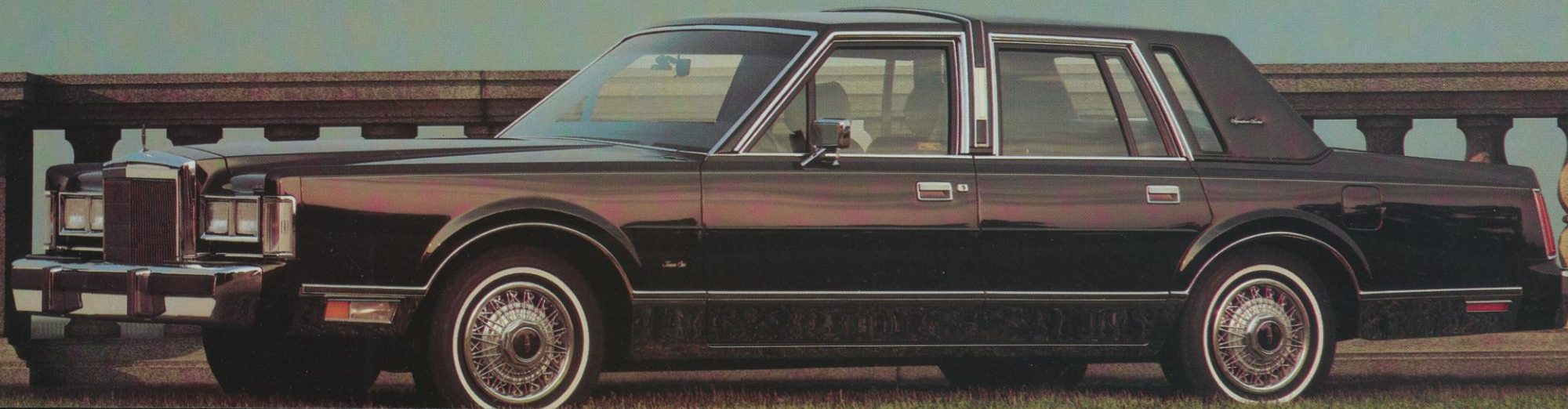
EXCEPTIONAL ELEGANCE – ENGINEERED TO EXCITE

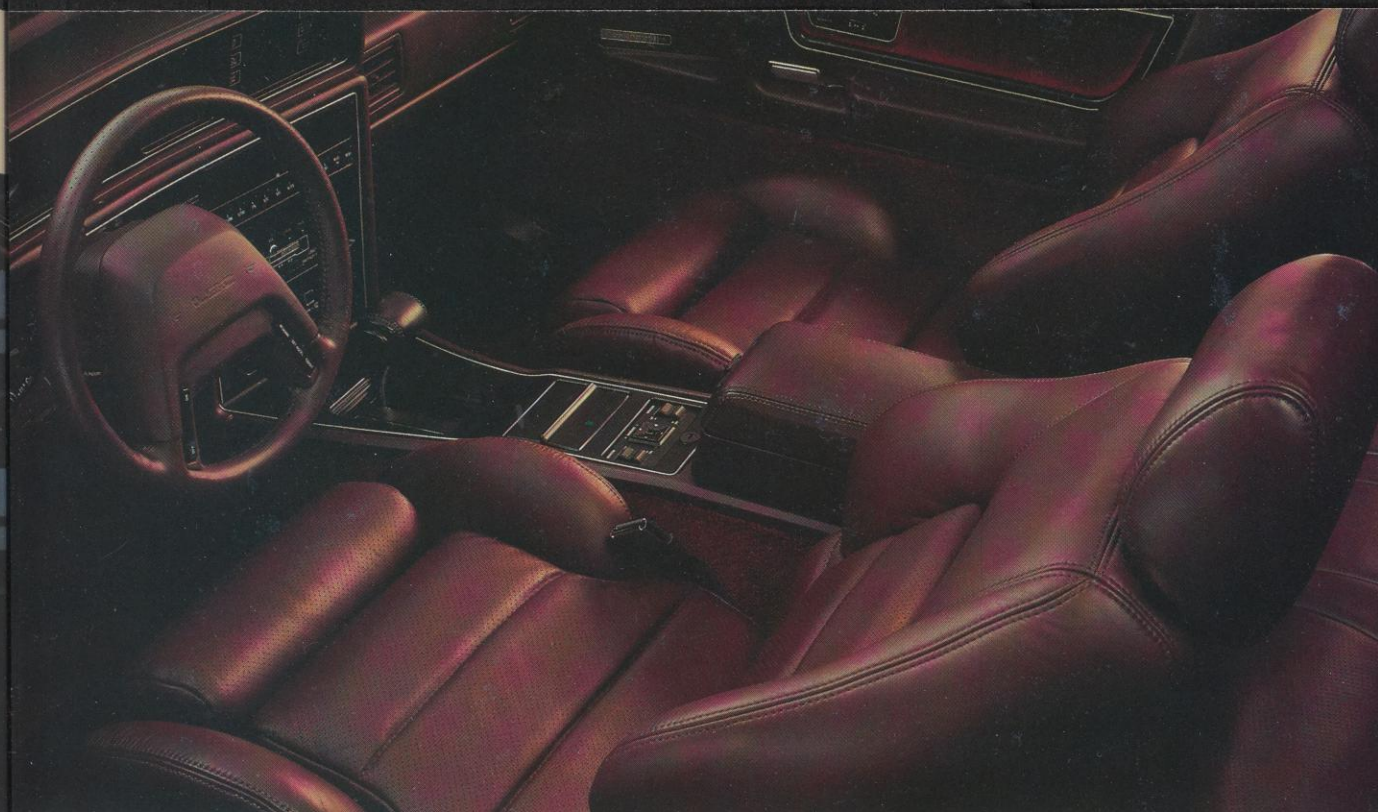


LINCOLN MARK VII FOR 1988.
CONTINUING THE TRADITION OF BREAKING WITH TRADITION.



LINCOLN TOWN CAR FOR 1988.
SHAPED WITH ONE OVERRIDING GOAL. YOUR COMFORT.





For those who believe spirited performance and exceptional elegance are the ultimate luxuries.

1988 heralds another year of outstanding levels of luxury and performance for the Lincoln Mark VII line. After one test drive in the Lincoln Mark VII LSC you'll understand firsthand why it behaves like no other luxury car. It goes quickly. Very quickly. In fact, its zero to one hundred km/ph acceleration will make the most serious driver smile.

Mark VII also stops very quickly. Its Anti-Lock Brake System stops you up to 40% faster on slick or icy surfaces than conventional systems.

Yet, while Mark VII LSC exhibits such sharp responsiveness, it isn't at the expense of comfort. Its appointments, its personal touches and enormous number of standard features more than live up to the legendary name, Lincoln.

And what designer better understands the disciplines of subtlety and understatement than Bill Blass? Bill Blass gives Mark VII a feel for fashion that also acknowledges a definite feel for the road.

The 1988 Lincoln Mark VII LSC and Bill Blass Designer Series — continuing the Mark VII tradition of breaking with tradition.

Lincoln Mark VII LSC in Cabernet Clearcoat Metallic and Cabernet Leather Interior



**Undiminished size.
Uncompromised luxury.
Distinctively Town Car.**

In a world where the difference between promise and product is often considerable, Lincoln Town Car for 1988 delivers exactly what you expect. Exceptional quiet. A smooth substantial ride. Plus a look and presence on the road that is becoming increasingly distinctive. And for 1988 that distinction is even more evident with its new subtle design treatments.

Town Car remains one of the few traditional six passenger luxury sedans with more room inside than any other North American car, excluding station wagons and vans.

Only a genuine commitment to product integrity could yield such an automobile. Lincoln Town Car for 1988. A space shaped with one overriding goal. Your comfort.

Lincoln Town Car
Signature Series
Cartier Designer Series

Lincoln Town Car Signature Series in Dark Shadow Blue Clearcoat Metallic and Shadow Blue Interior

LINCOLN MARK VII • LINCOLN TOWN CAR

WHAT LUXURY CARS SHOULD BE.

The following are only partial listings of the enormous number of features offered:

LINCOLN MARK VII

Functional Features	Bill Blass Mark VII	Mark VII LSC
5.0 Litre High-Output V8 Engine (225 hp@4000 rpm)	S	S
Sequential Multi-Port Electronic Fuel Injection	S	S
Electronic Engine Controls (EEC-IV)	S	S
Tubular Exhaust Headers	S	S
Performance Camshaft	S	S
Dual Exhaust	S	S
Four-Speed Automatic Overdrive Transmission	S	S
Power Rack-and-Pinion Steering	S	S
Four-Wheel Disc Anti-Lock Brake System	S	S
Electronic Air Suspension and Level Control	S	S
Handling Suspension		S
Nitrogen Gas-Pressurized Shocks and Struts	S	S
Front and Rear Stabilizer Bars	S	S
P225/60R16 BSW Performance Steel- Belted Radial Tires with Cast Aluminum Wheels		S
Exterior Features		
Aerodynamic Halogen Headlamps	S	S
Fog Lamps		S
Illuminated/Keyless Entry System	S	S
Interior/Convenience Features		
Analog Instrumentation with Tachometer		S
Six-Way Power Driver and Passenger Seats	S	S
Unique Articulated Sport Seats with Manual Thigh and Power Bolster/ Lumbar Supports		S
Electronic Automatic Climate Control	S	S
Tinted Glass	S	S
Electronic AM/FM Stereo Search Radio with Cassette	S	S
12-Speaker High Fidelity Ford JBL Audio System	O	O
Power Moonroof	O	O
Anti-Theft Alarm System	O	O
Leather Seat Trim	S	S

LINCOLN TOWN CAR

Functional Features	Town Car	Signature	Cartier
5.0 Litre V8 Engine	S	S	S
Sequential Multi-Port Electronic Fuel Injection	S	S	S
Electronic Engine Controls (EEC-IV)	S	S	S
Four-Speed Automatic Overdrive Transmission	S	S	S
Power Steering	S	S	S
Power Front Disc/Rear Drum Brakes	S	S	S
Nitrogen Gas-Pressurized Shock Absorbers	S	S	S
Automatic Load-Leveling Suspension	S	S	S
Interior/Convenience Features			
50/50 Twin Comfort Lounge Seats	S	S	S
Six-Way Power Driver's Seat	S	S	S
Six-Way Power Passenger Seat	O	S	S
Leather Seat Trim	O	O	O
Electronic AM/FM Stereo Search Radio with Cassette and Premium Sound Six-Speaker System	S	S	S
Ford JBL High Fidelity 12-Speaker Audio System	O	O	O
Compact Disc Player (Requires Ford JBL Audio System)	O	O	O
Power Glass Moonroof	O	O	O
Anti-Theft Alarm System (Requires Keyless Entry System)	O	O	O
Automatic Climate Control	S	S	S
Tinted Glass	S	S	S
30-Ounce Floor Carpeting	S	S	S
Exterior Features			
Illuminated Keyless Entry System	O	S	S
Tires/Wheels			
P215/70 × R15 WSW Steel-Belted Radial Tires	S	S	S
Puncture-Sealant Tires	O	O	O

S - Standard Feature

O - Optional Feature

This brochure has been prepared only as a general guide to the customer and every effort has been made to ensure that all information is correct at the time of printing. However, some errors may have been included and some of the information or specifications may have been changed since the time of printing. Your dealer will have full details on any changes and/or corrections and you should ask him to bring you up to date at the time of your purchase. Ford Motor Company of Canada, Limited reserves the right to change prices, colours, materials, specifications and models and to discontinue models without notice and without incurring obligations of any kind. Some features described or shown may be optional at extra cost. Some options are required in combination with other options.

