

1 9 8 9 F O R D

***LIGHT TRUCK
EXTERIOR COLORS***



1989 FORD LIGHT TRUCK EXTERIOR COLOR SELECTIONS



Raven Black 1C
R, F, B-II, B, A



Dark Grey Metallic 1D
F, B, E/CW



Medium Silver Metallic 1G
F, B, E/CW



Scarlet Red 2D
R, F, B-II, B



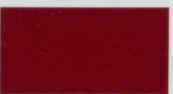
Cabernet Red 2H
R, F, B-II, B



Medium Red 27
A, E/CW



Medium Shadow Blue Metallic 3R
E/CW



Wild Strawberry Clearcoat Metallic 4N
A



Alpine Green Metallic 42
F, B



Hunter Green Clearcoat Metallic 43
R, B-II*



Shadow Grey Clearcoat Metallic 49
R, B-II, A



Light Sandalwood Clearcoat Metallic 63
R, B-II, A



Light Sandalwood 64
R, B-II, A



Spinnaker Blue 7A
A



Crystal Blue Clearcoat Metallic 7E
R, B-II, A



Twilight Blue Clearcoat Metallic 7F
R, B-II, A



Bright Regatta Blue Metallic 7H
F, B



Deep Shadow Blue Metallic 7N
F, B, E/CW



Sandalwood Clearcoat Metallic 8Z
R, B-II, A



Bright White 9J
E/CW



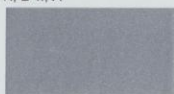
Colonial White 9M
R, F, B-II, B, A, E/CW



Desert Tan Metallic 9N
F, B, E/CW



Light Chestnut 9T
F, B, E/CW



Silver Clearcoat Metallic 9Z
R, B-II, A



Dark Chestnut Metallic 95
F, B, E/CW

Availability Legend: R—Ranger, F—F-Series, B-II—Bronco II, B—Bronco, A—Aerostar, E/CW—Econoline/Club Wagon

*Available Only on Bronco II Eddie Bauer.



The description and specifications contained in this folder were in effect at the time the publication was approved for printing. Ford Motor Company, whose policy is one of continuous improvement, reserves the right to discontinue models, at any time, or to change specifications or design without notice and without incurring obligation.

Litho in U.S.A.