

1989 FORD TAURUS



FORD TAURUS FOR 1989

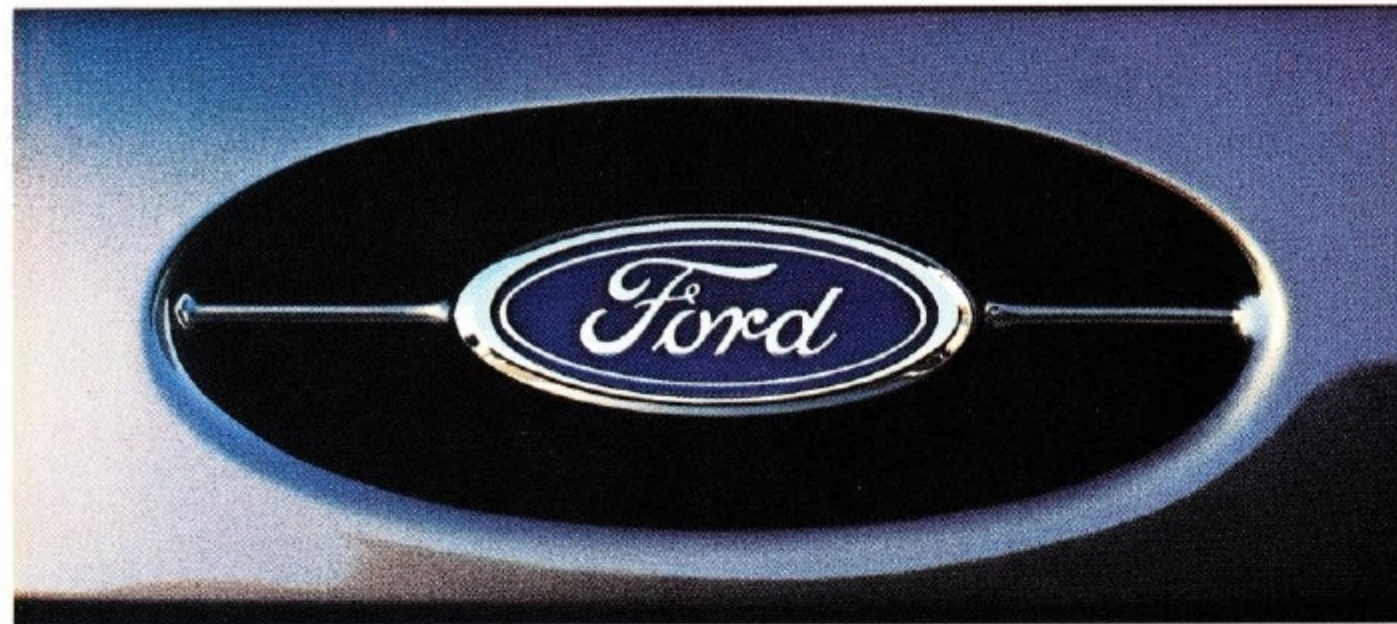
World-class quality is at the core of the philosophy that has made Taurus America's leader in automotive design.

In theory and in practice, world-class quality goes well beyond traditional measures such as fit and finish to encompass nearly every aspect of design and engineering.

Outstanding aerodynamic efficiency. Exceptional driver-oriented convenience and

And they've responded by making the mid-size Taurus an unqualified success. In fact, Taurus has ranked near the top of the list of best-selling cars of all sizes and types, domestic and import, in America.*

Taurus comes in L, GL and LX sedan and wagon models. And now, with the introduction of the Super High Output SHO sedan model, a fuel-injected 3.0L DOHC 24-valve V-6 powers Ford Taurus into the world of high-performance sport sedans.



6-passenger comfort. Sophisticated fuel-injected and computer-controlled performance. A 4-wheel independent suspension for balanced ride smoothness and handling capability.

Since its introduction, Ford Taurus has brought these world-class design and engineering features to sedan and wagon drivers across America.

BEST-BUILT AMERICAN CARS EIGHT YEARS RUNNING

For the past eight consecutive years, Ford quality has led all other American car companies. This is based on an average of owner-reported problems in a series of surveys of '81-'88 models designed and built in North America.

*Based on manufacturers' reported retail deliveries for calendar year 1987.

*Taurus LX Sedan in
Light Titanium Clearcoat
Metallic with optional
Preferred Equipment Pack-
age 208A. Some equip-
ment shown is optional.*





Taurus LX interior in Titanium with optional Preferred Equipment Package 208A.

A WORLD-CLASS SIX-PASSENGER DRIVER'S CAR

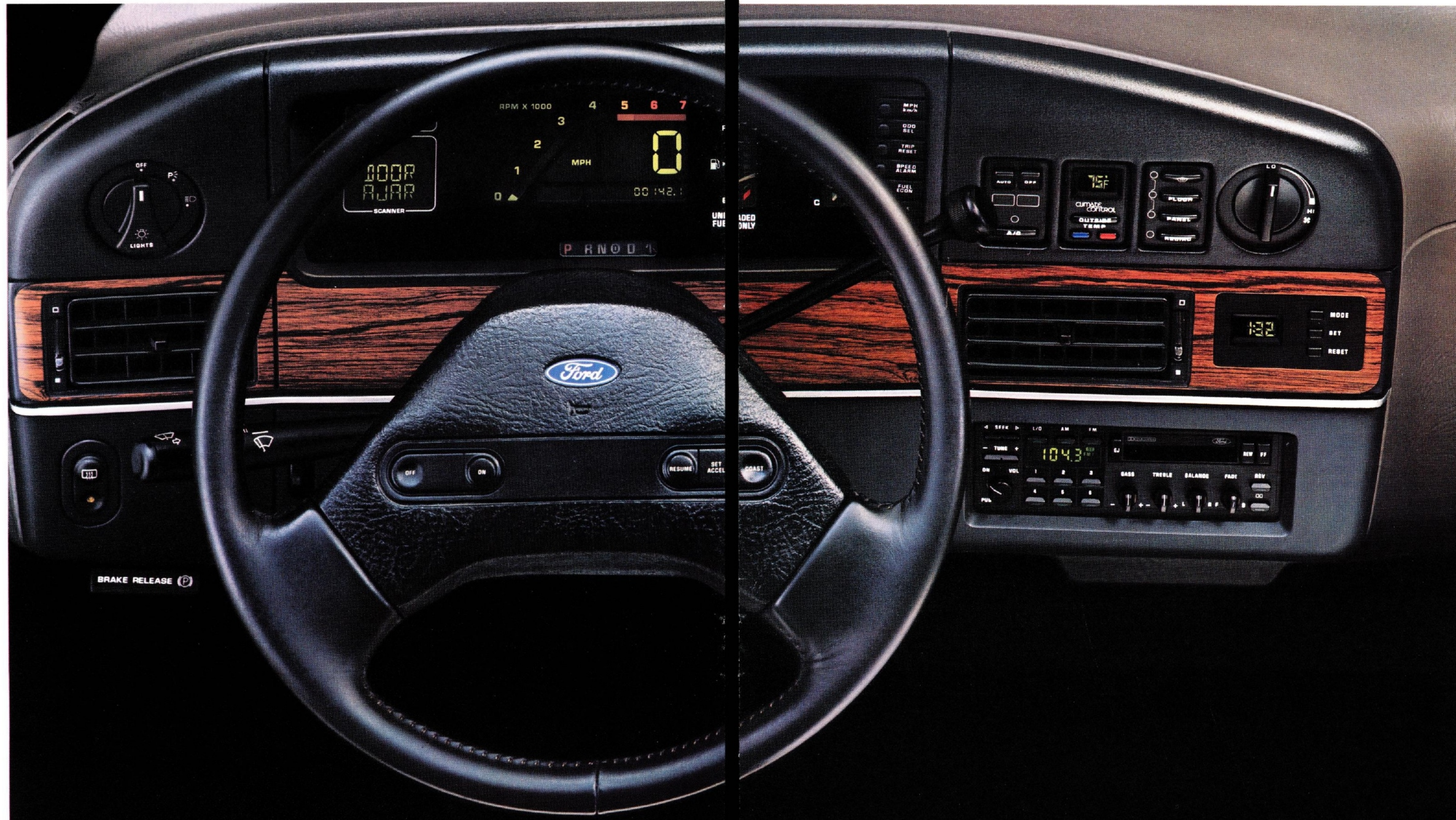
With the aid of advanced computer graphics, Ford designers have created for Taurus a living environment that is a model of space-efficiency and human engineering.

With a passenger volume index of nearly 100 cu. ft., the mid-size Taurus provides plenty of head, shoulder, hip and leg room for six adults. The seats are designed for firm and supportive comfort.

For all its spacious comfort for six, Taurus is an ergonomically designed driver's car. Important driving controls, positioned according to frequency of use and immediacy of need, are close at hand and require minimal effort to operate.

Controls are also designed for ease of use regardless of the size of your hands, and are designed for easy identification by touch. Instruments are located and colored to make them easy to read at a glance.

Ergonomics, however, is not the only science at work for your driving comfort. Taurus' aerodynamic shape contributes as well by minimizing wind noise and improving the car's handling.



Switches for climate controls and headlamps have a rotary-type design that is sized and shaped for easy identification and operation.



Power seat controls have a joy stick/rocker switch combination. Fuel door and decklid/liftgate releases are lockable.



At your fingertips are controls for turn signals, wipers/washer, high beams, and flash-to-pass feature.

Left: Taurus LX instrument panel in Titanium with optional Preferred Equipment Package 208A.

Some equipment shown above is optional.

FORD TAURUS LX



Ford Taurus stands apart from the majority of sedans and wagons in its class on the merits of its world-class design. With its uniquely Ford aerodynamic

shape and its space-efficient and ergonomic interior, Ford Taurus is America's trend-setting design leader.

Taurus is the product of an approach to design called "best in class." Four hundred

of the best features of many of the world's finest cars were evaluated with the intent of equalling or surpassing as many as possible.

Add the features of the LX model to Taurus' award-

winning design. What you have is a world-class sedan or wagon offering luxurious comfort and smooth performance.

Responsive multi-port fuel-

controlled V-6 power is just one of the superb engineering features you'll experience in Taurus LX.

LX is also equipped with lower bodyside cladding. It's designed to help protect

against stone pecking, and is flared at the bottom to reduce wind turbulence, enhancing the air-flow efficiency of one of the most aerodynamic mid-size sedans or wagons built in America.

Taurus LX Sedan in Currant Red Clearcoat Metallic with optional Preferred Equipment Package 208A. Some equipment shown is optional.



Taurus LX with Preferred Equipment Package 207A offers a host of luxury car features, beginning with air conditioning and an electronic AM/FM stereo

radio/cassette player with premium sound system.

Set the autolamp system to turn the headlamps on and shut them off automatically. Lift a front door handle and the illuminated entry system

lights the key bezel and turns on the interior lights.

Taurus LX includes a leather-wrapped tilting steering wheel with speed control. The driver's seat is equipped with 6-way power adjust-

ment. The instrument cluster provides a tachometer plus alert lights for door ajar, low washer fluid, low oil level, low fuel, and headlamp out.

Also in LX's list of features: Front cornering lamps. P205

all-season radials on 15-in. cast aluminum wheels. Rear window defroster. Power side windows and door locks. Remote-control fuel door and decklid (sedan) or liftgate (wagon) releases. Secondary

sun visors that provide added protection from bright sunshine. Courtesy light package with headlamps-on reminder. And luxury-level insulation for an added measure of quiet comfort.

Taurus LX Wagon in Crystal Blue Clearcoat Metallic with optional Preferred Equipment Package 208A. Some equipment shown is optional.



FORD TAURUS L AND GL

Taurus L and GL are affordable mid-size sedans and wagons of outstanding value. Underlying their great value are all the individual features that create their world-class design.

The polycarbonate bumper system, for example, is designed for 5-mph impact resistance (twice the 2½-mph Federal standard) as well as for aerodynamic efficiency. The electric remote-control outside mirrors are also among the many features designed to help reduce drag.

Seat construction is another example. High-density foam pads, used in areas requiring extra support, distribute contact pressure evenly with no hard or soft spots which can cause discomfort. Strong flex-o-lator springs help provide lower back support. Tri-laminated upholstery is bonded to a layer of foam backed by a third layer of lining to help prevent wrinkling.

Along with their numerous design features, Taurus L and GL are equipped with standard power-assisted steering and brakes, front seat back recliners, AM/FM stereo

sound system, trip odometer, electronic digital clock, interval windshield wipers, tinted glass and much more.

Taurus GL adds to this list: 4-way adjustable front headrests and seat back map pockets, dual visor mirrors with driver-side secondary visor, and elasticized cargo tie-down net. And in the rear seating compartment of the sedan model: a fold-down

center armrest, integral headrests, and a rear window ledge storage bin.

Taurus L and GL sedans are powered by the fuel-injected 2.5L I-4 engine. The multi-port fuel-injected 3.0L V-6 is optional in the sedans and standard in the wagons. Choose the GL model and you can select the optional 3.8L EFI V-6 with its higher low-end torque.

Right: Taurus sedan's deep-well trunk has 17 cu. ft. of space, the result in part of a rear suspension design that positions the MacPherson strut towers as far outboard and as low as possible.

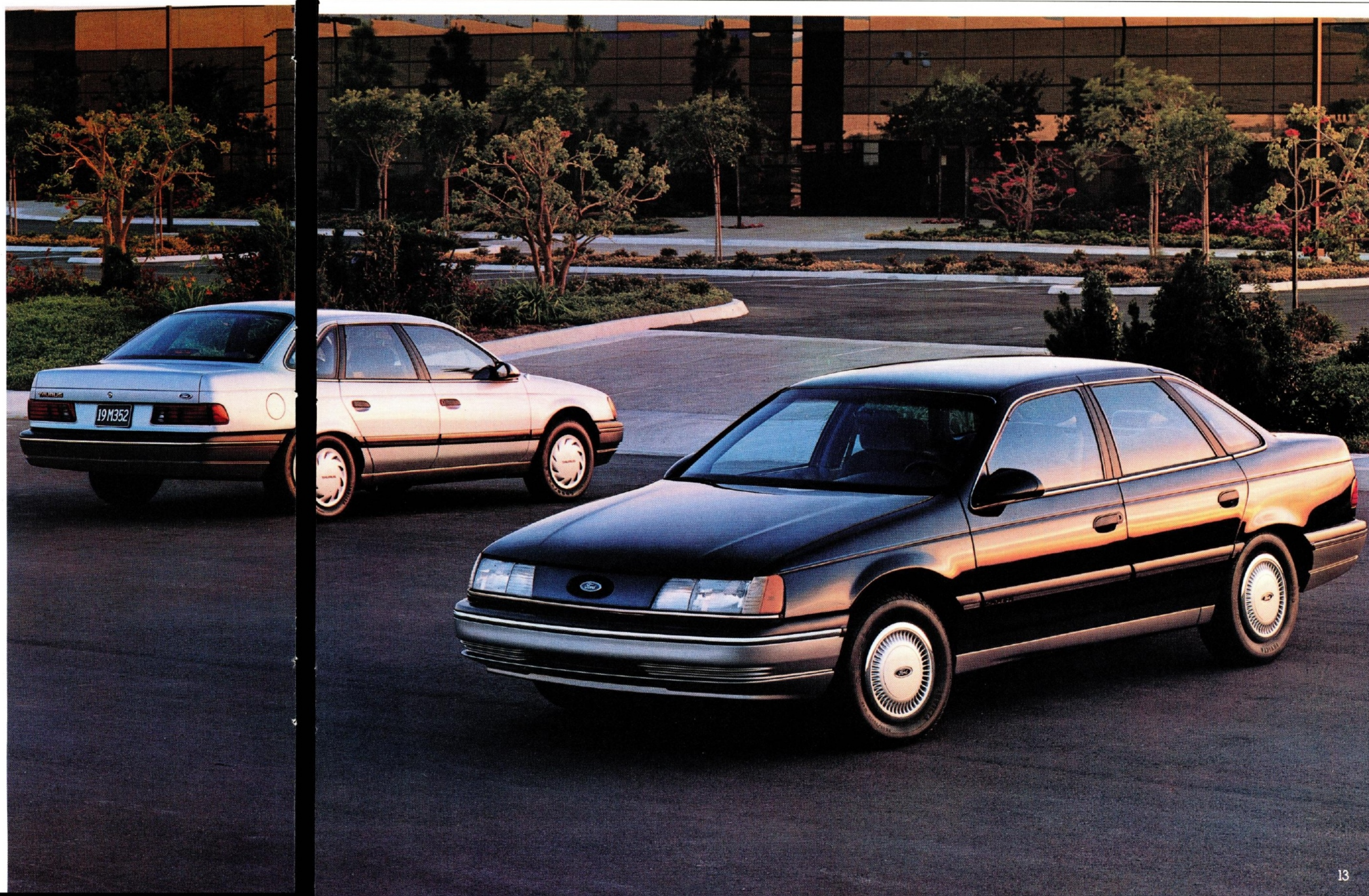


Below: Taurus GL interior in Shadow Blue with optional Preferred Equipment Package 204A.

Some equipment shown on these pages is optional.



Far right: Taurus GL Sedan in Twilight Blue Clearcoat Metallic (foreground) with optional Preferred Equipment Package 204A. Taurus L Sedan in Light Crystal Blue Clearcoat Metallic with optional Preferred Equipment Package 201A.



A design leader in its own right, the Taurus wagon has a uniquely contemporary aero shape that rivals the most stylish of 4-door sedans.

What is particularly remarkable is that Taurus wagon's aerodynamic efficiency was achieved without sacrificing spaciousness.

Taurus' maximum 80.7 cu. ft. of cargo volume is the result of interior design space-efficiency coupled with suspension design ingenuity. The rear suspension of the Taurus wagon is a unique system (illustrated on page 17) designed for a lower and wider load floor to maximize usable space.

Taurus is equally outstanding in convenience and versatility. The 3-passenger 60/40 split second seat folds down flat for maximum cargo-carrying utility. Depending on which seat back is lowered, you still have room for one or two passengers.

The two-way liftgate provides access for loading cargo with either the rear window raised or the entire liftgate. The aero-designed roof luggage rack includes an adjustable rear crossbar and six tie-downs.

The carpeted load floor includes built-in cargo tie-downs, plus an elasticized cargo net in the GL and LX models. There's also a lockable under-floor storage compartment (except with optional conventional spare tire).

The 60/40 split-folding second seat is not only comfortable, but highly versatile as well.



Taurus wagon provides additional cargo space in a convenient lockable under-floor storage compartment.



For families, there's the optional rear facing third seat — just right for two children.



The standard two-way liftgate lets you load cargo with the window raised or the entire liftgate.



Far right: Taurus GL Wagon in Oxford White with optional Preferred Equipment Package 204A.

Some equipment shown on these pages is optional.



TAURUS L, GL, LX ENGINEERING

A 2.5L I-4 engine powers Taurus L and GL sedan models. This fuel-injected I-4 has overhead valves (OHV) and high-swirl combustion (HSC) design. And it's engineered for responsive low-end acceleration, putting out 130 lbs.-ft./torque at 2,600 rpm.

The 3.0L V-6 is also engineered to produce the powerful low-end torque preferred by many drivers. With features such as pushrod-activated overhead valves and 12-in. tuned air intake runners, the 3.0L generates 80 percent of its 160 lbs.-ft./torque at 1000 rpm.

For even higher performance, there's the 3.8L V-6 that reaches its peak 215 lbs.-ft./torque at just 2200 rpm. Like the 3.0L V-6, the high-compression 3.8L features a tuned intake manifold and multi-port electronic fuel injection with the injector nozzles mounted directly in the cylinder heads. The 3.8L also has a special counter-rotating balance shaft which helps control engine vibration.

Every Taurus powerplant is equipped with Ford's electronic engine control system called EEC-IV. This sophisticated computer processes thousands of sensor-fed bits of information related to engine functions, then instantaneously controls the fuel-air mixture and adjusts the ignition timing to optimize all-around performance.

Taurus engines are equipped with electronic fuel injection (multi-port type with V-6 engines) and EEC-IV computer.

Front-wheel drive places the weight of the engine and transaxle over the driving wheels for excellent traction.

The front suspension system in sedan and wagon models is the MacPherson strut design with gas-pressurized struts and stabilizer bar. Front end alignment needs no periodic adjustment.

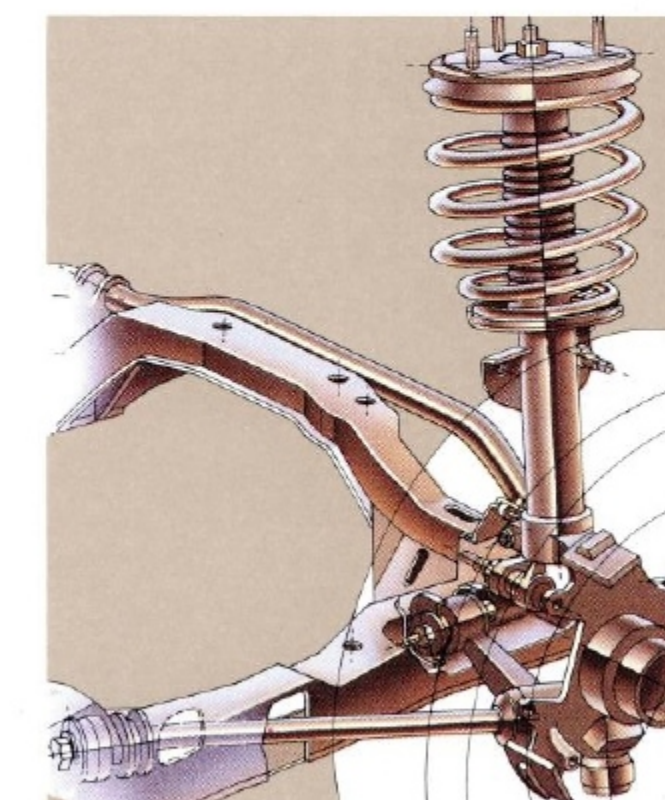
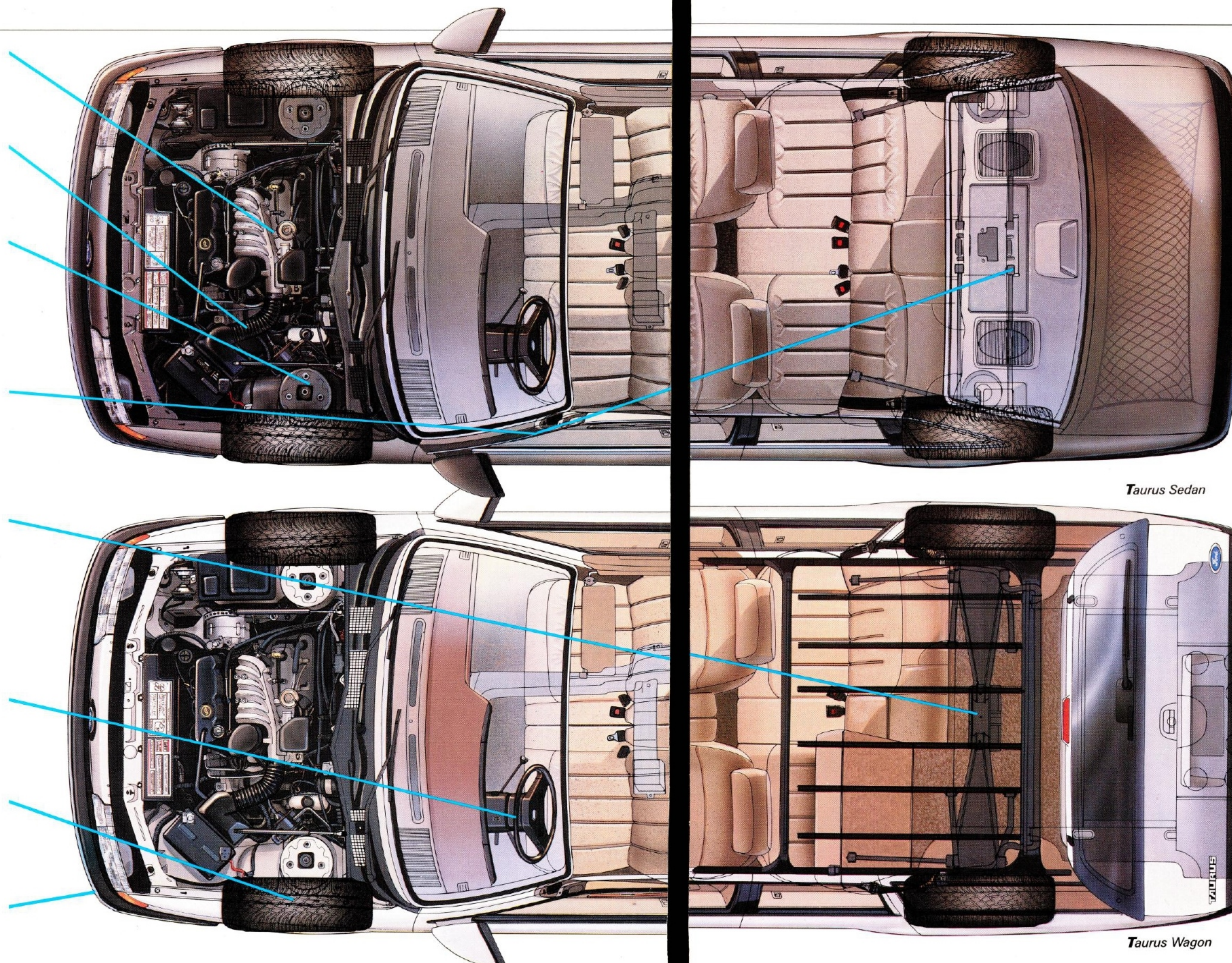
The independent rear suspension in the Taurus sedan is the MacPherson strut design with gas-pressurized struts. V-6-powered models have a stabilizer bar.

The independent rear suspension with gas-pressurized shocks and stabilizer bar in Taurus wagon incorporates a "short/long arm" (SLA) setup designed to provide sedan-like ride quality and handling and also maximize usable cargo space.

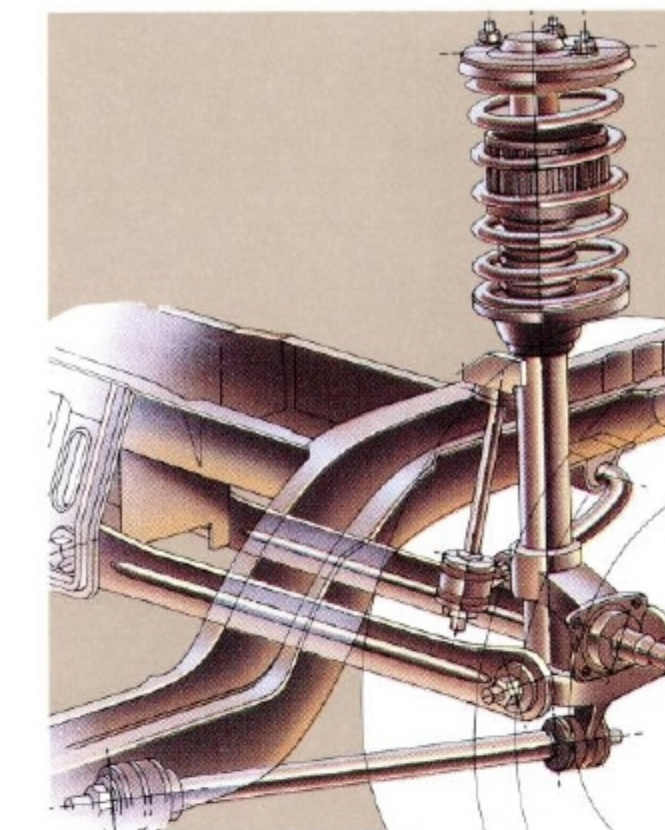
The power rack-and-pinion steering system features a 15.25:1 steering gear ratio for quick responsiveness.

The P-metric steel-belted radial tires feature all-season tread for added traction in all weather conditions.

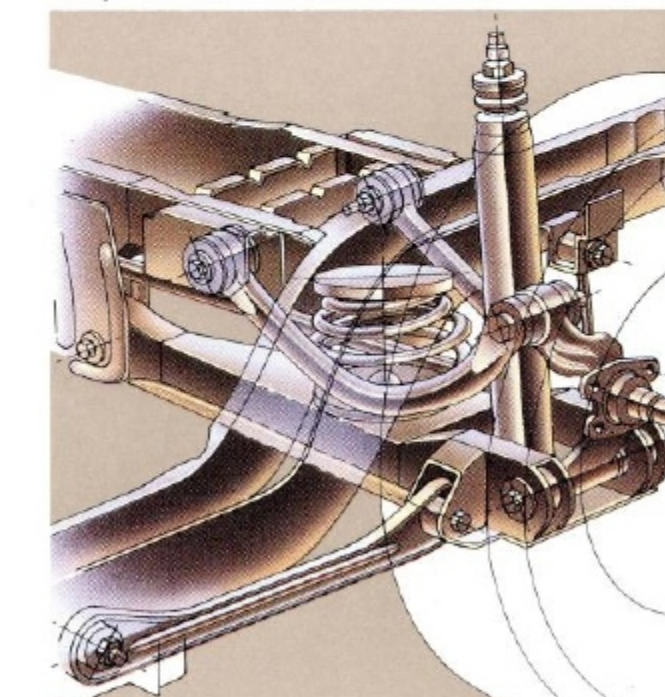
The 5-mph front and rear polycarbonate bumpers exceed the 2 1/2-mph Federal standard.



MacPherson strut front suspension



MacPherson strut independent rear suspension—Taurus Sedan



SLA independent rear suspension—Taurus Wagon

A 4-wheel independent suspension system that can deliver smooth ride quality as well as handling precision is an important mark of a world-class performer like the Ford Taurus.

The Taurus sedan features the MacPherson spring-over-strut design, tuned for optimized ride and handling balance. The struts are nitrogen gas-pressurized to maintain consistent hydraulic fluid pressure. The result is a smooth and controlled ride, especially over rough road conditions.

For precise control of independent rear suspension geometry, the sedan's 4-bar parallel arms connect the wheel spindles firmly to the chassis platform to keep the wheels in alignment. This minimizes unpredictable "bump steer" when one or both tires strike a bump or pothole.

While sharing the sedan's MacPherson strut front suspension, the Taurus wagon has a unique "short/long arm" (SLA) independent rear suspension system.

The SLA setup uses separate springs and gas-pressurized shock absorbers mounted on lower control arms to allow for a lower load floor and more cargo space.

Equipped with components such as variable-rate conical coil springs and stabilizer bar, Taurus wagon's independent rear suspension delivers sedan-like ride smoothness and handling.

INTRODUCING THE TAURUS SHO HIGH-PERFORMANCE SPORT SEDAN

SHO

America's design leader now has under its aero-shaped hood a sophisticated engine of high-performance caliber: an advanced multi-valve 3.0L "Super High Output" V-6 from which the new Taurus SHO sedan derives its name.

The fuel-injected 3.0L SHO 24-valve V-6 has four valves per cylinder — two for intake, two for exhaust — that significantly increase the engine's air intake for high power output. Dual high-lift overhead camshafts actuating the valves in each cylinder contribute as well to the engine's super high output performance.

Compared with the conventional 2-valve arrange-

ment, each of the four valves is smaller and lighter, allowing for faster reaction to the camshafts. The lighter valves with lower-tension springs reduce stress on the valvetrain, enabling the 3.0L SHO V-6 to run effortlessly at high rpm.

Multi-valving also allows for an optimized spark plug location in the cylinders to burn the fuel-air mixture rapidly and evenly.

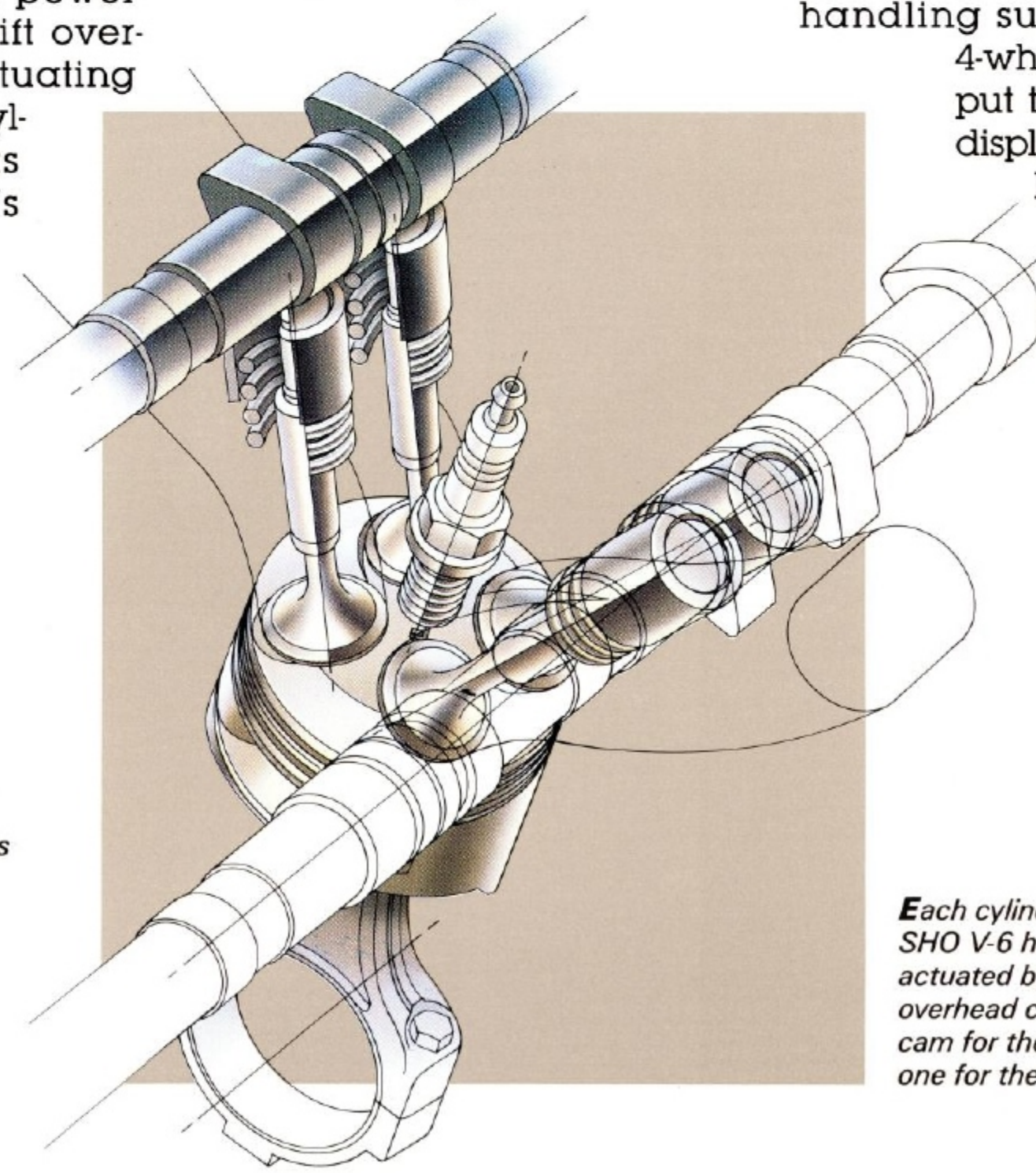
Engine breathing and combustion are further improved by components such as a dual runner tuned intake manifold and a tuned dual exhaust system.

A sequential multi-port electronic fuel-injection system, controlled by Ford's advanced EEC-IV computer, provides precise fuel metering to each cylinder and improves performance under all operating conditions.

With an SAE net rating of 220 horsepower at 6200 rpm, the 3.0L SHO V-6 has one of the highest ratios of power to displacement (73.6 hp per liter) among normally aspirated engines. And it generates 200 lbs.-ft./torque at 4800 rpm for responsive acceleration.

The power and torque of its engine, coupled with its handling suspension and

4-wheel disc brakes, put the Taurus SHO displayed on the following pages in the league of Europe's high-performance sport sedans.



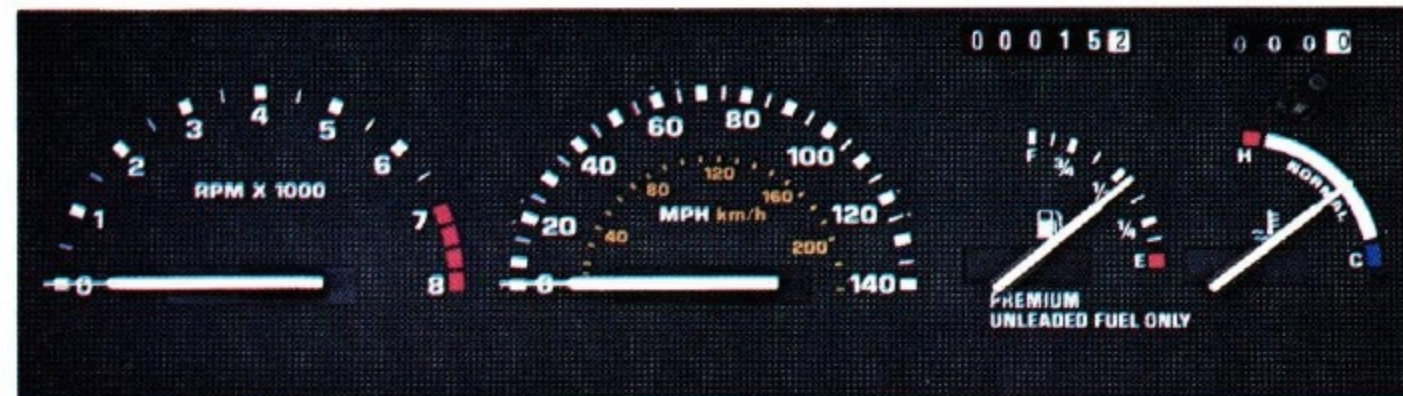
The 3.0L SHO (super high output) 24-valve V-6 features dual runner tuned intake manifolds, a tuned dual exhaust system, and a sequential multi-port electronic fuel-injection system governed by Ford's EEC-IV engine control computer.

Each cylinder of the 3.0L SHO V-6 has four valves actuated by dual high-lift overhead camshafts—one cam for the intake valves and one for the exhaust valves.



*Taurus SHO sedan in Light Titanium
Clearcoat Metallic with optional
Preferred Equipment Package 211A.
Some equipment shown is optional.*

FORD TAURUS SHO



An 8000-rpm tachometer and 140-mph speedometer signal that Taurus SHO is in a higher class of 4-door sedans.

The Taurus SHO model has the combination of sport features and luxury appointments that distinguish world-class performance sedans.

Low-profile, speed-rated P215/65VR15" BSW tires on cast aluminum wheels give Taurus SHO the tread to match its front-wheel-drive traction and 4-wheel independent handling suspension system. Taurus SHO also features front fog lamps and lower protective bodyside aero cladding with wheel spats.

The SHO interior is special, too. The reclining cloth front bucket seats have 4-way adjustable headrests, adjust-

able lumbar and side bolster supports, and seat back map pockets. The driver's seat is also equipped with 6-way power adjustment. Between the seats is a console with flip-up padded armrest, storage bin and rear footwell courtesy lamp.

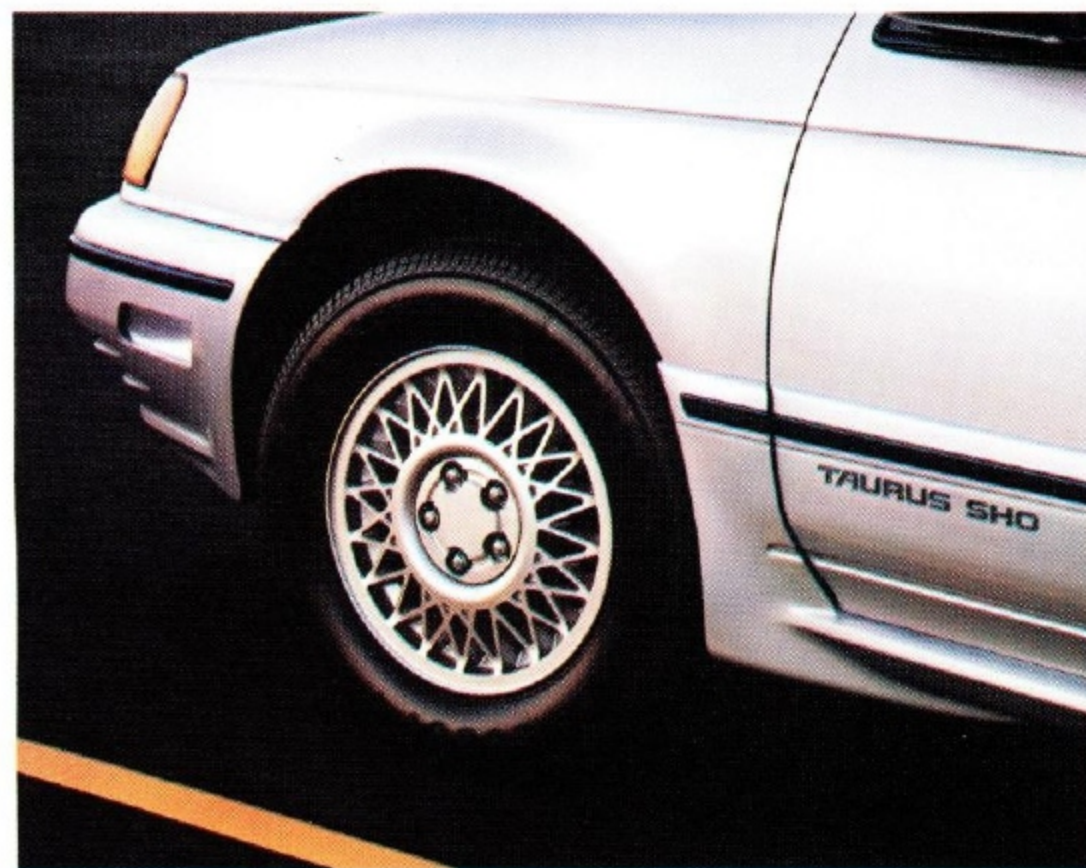
The power of the 3.0L DOHC 24-valve V-6 is transmitted through a 5-speed manual transaxle with close-ratio gearing and specially designed 9.25" clutch.

The SHO instrument cluster has a 140-mph speedometer and 8000-rpm tach. Plus diagnostic alert lights signaling door ajar, low washer fluid, low oil level, low engine coolant, low fuel, and headlamp out.

Taurus SHO's extensive list of features in Preferred Equipment Package 211A also includes Ford's High-Level Audio System, to which you can add the optional Ford JBL Audio System for outstanding stereo quality and performance.

Manual-control air conditioning. Leather-wrapped steering wheel. Tilting steering column. Speed control. Courtesy light group. The autolamp and illuminated entry systems. Remote fuel door and decklid releases. Power side windows and door locks. You'll find these features, too, and many more for your driving enjoyment in the superbly equipped Taurus SHO sedan from Ford.

Taurus SHO sports VR-rated tires on cast aluminum wheels plus lower bodyside cladding with wheel spats. Fog lamps, too, shown on page 21.



Taurus SHO interior in Titanium with optional Preferred Equipment Package 211A. Some equipment shown, such as leather seating surfaces, is optional.



PREFERRED EQUIPMENT PACKAGES AND OPTIONS

Preferred Equipment Packages make it easy to order a well-equipped Ford Taurus. Simply select the package with the features you want from the chart on page 25. Listed also are options available separately.

Most of the packages offer a price discount on selected features. Their combined price is less than the total price if they were purchased as separate options.

Contents of Preferred Equipment Packages are subject to change. For the latest information, as well as details on package discounts, consult your Ford Dealer.

Following are descriptions of features which may be of particular interest to you.

High-Level Audio System

features electronic volume control; separate power control; pop-out controls for bass, treble, balance and fade (flush when not in use); motorized cassette tape eject; memory for six AM and 12 FM stations; FM muting; seek tuning for radio (up and down the scale) and cassette tape (forward/reverse); scan tuning for radio and cassette tape; auto-reverse cassette player; AM stereo reception — C-Quam® encoded; Dolby® B noise reduction for tape and DNR™ for radio; automatic metal/CrO₂ tape equalization; 80 watts RMS continuous power; six premium speakers and power amplifier/booster.

Ford JBL Audio System,* new for Taurus 1989, is available with the High-Level Audio System in sedan models to create a complete

sound package of ultra high performance. Utilizing a 3-way speaker approach with crossover network, the system includes ten JBL drivers in four locations (front doors and rear window ledge). The 4-channel amplifier has 120 watts of total power and a low 0.07% Total Harmonic Distortion (THD).

Electronic Instrument Cluster, a comprehensive driver information center, features electronic digital speedometer/odometer; electronic tachometer; mechanical fuel and temperature gauges; English/metric conversion functions; Tripminder® computer that calculates trip average fuel economy, instantaneous fuel economy, distance to empty and cumulative trip distance; low fuel alert; low oil alert; speed alarm and service interval

reminder. Also, the Diagnostic System Scanner alerts you to any of the following conditions: door ajar, liftgate ajar (wagon models), headlamp out, taillamp out, and low washer fluid.

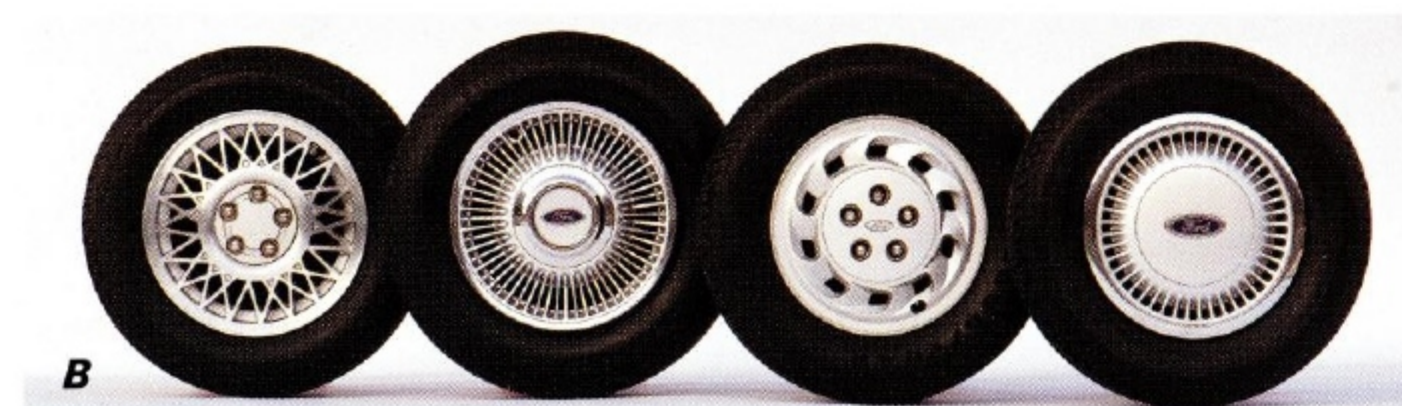
Electronic Climate Control Air Conditioning provides automatic temperature control, digital display of both inside and outside temperatures, sunload compensation sensor, electronic push-button controls for desired temperature and mode selection, full manual override capability for blower speed and mode selection, and infinitely variable rotary blower speed control.

*See your dealer for availability.

C-Quam® is a registered trademark of Motorola, Inc.

Dolby® is a registered trademark of Dolby Laboratories Licensing Corp.

DNR™ is a trademark of National Semiconductor Corp.



Illustrated features: (A) Fold-out picnic table (wagon). (B) Left to right: Cast aluminum wheel; Custom (locking) wheel cover; Styled road wheel; Finned wheel cover. (C) Power moonroof.

NOTABLE STANDARD EQUIPMENT

- 2.5L I-4/3-speed automatic (sedan)
- 3.0L V-6/4-speed automatic (wagon)
- Single aero-design halogen headlamps
- 5-mph polycarbonate bumpers
- P205/70R14 BSW all-season radials
- Deluxe wheel covers

- Dual electric remote-control mirrors
- Shingled one-piece doors with concealed drip moldings
- Tinted glass — complete
- Bodyside protection moldings
- Reclining cloth split bench seats (4-way adjustable headrests in GL and LX)

- Electronic AM/FM stereo search radio (may be deleted for credit)
- 16-ounce floor carpeting
- Carpeted and lighted luggage/cargo compartment
- Interval windshield wipers
- Trip odometer
- Electronic digital clock

- Side window demisters
- Two-way liftgate (wagon)
- Aero-designed roof luggage rack (wagon)
- Built-in cargo tie-downs (wagon)
- Lockable under-floor storage, except with optional full-size spare tire (wagon)

OPTIONS AND PREFERRED EQUIPMENT PACKAGES

X=Included in Package O=Separate Option
X*=Included but may be deleted as part of Package Delete Option
O**=Not available when Package Delete Option is ordered

	L 201A	GL 202A	204A	LX 207A	208A	SHO 211A
Reclining cloth bucket seats with 4-way adjustable headrests and center console		0	0	0	0	X
Vinyl split bench seats	0	0	0			
Bucket seats with leather seating surfaces		0	0	0	0	0
Split bench seats with leather seating surfaces				0	0	
Electronic AM/FM stereo search radio/cassette tape player (1)	0	0	X	X*		
High-Level Audio System (see page 24) (1)		0	0	0	X	X*
Premium Sound System (2)		0	0	X*		
Ford JBL Audio System (see page 24)		0	0	0	0	0
Power radio antenna		0	0	0**	X	0**
Air conditioning (manual control)	0	0	X	X		X
Electronic climate control air conditioning (see page 24)		0	0	0**	X	0**
Diagnostic instrument cluster (3)		0	0	X		X
Electronic instrument cluster (see page 24)		0	0	0	X	
Leather-wrapped steering wheel	0	0	0	X*	X	X
Speed control	0	0	X	X*	X	X
Tilting steering column	0	0	X	X	X	X
6-way power driver seat adjustment	0	0	X	X	X	X
6-way power passenger seat adjustment		0	0	0	X	0
Power side windows	0	0	X	X	X	X
Power door locks	0	0	X	X	X	X
Power moonroof		0	0	0	0	0
Insta-Clear® heated windshield		0	0	0**	0	
Rear window defroster	0	0	X	X*	X	X
Rear window wiper/washer (wagon)	0	0	0	0**	0	
Autolamp system		0	0	X*	X	X*
Illuminated entry system		0	0	X*	X	X*
Keyless entry system		0	0	0**	X	0
Light group (4)	0	0	X	X	X	X
Dual visor mirrors and driver-side secondary visor		X	X			
Dual illuminated visor mirrors and secondary visor for driver and passenger		0	0	X	X	X
Remote fuel door and decklid/liftgate releases	0	0	X	X	X	X
Floor mats, front and rear	0	0	0	X*	X	X*
Automatic parking brake release	0	0	0	X	X	
Rear facing third seat (wagon)	0	0	0	0	0	
Fold-out picnic table (wagon)	0	0	0	0	0	
Cargo area cover, window shade-type (wagon)	0	0	0	0	0	
Rocker panel moldings (color-keyed to bumpers)		0	X	X	X	
Cornering lamps		0	0	X	X	X
Fog lamps						X
Clearcoat metallic paint	0	0	0	0	0	0
Paint stripe		0	X	X*	X	
Finned wheel covers (on 14" tires)	0	0	X			
Cast aluminum wheels (with 15" tires)		0	0	X*	X	X
Custom (locking) wheel covers (on 15" tires)		0	0			
Styled road wheels (on 14" tires)		0	0	0	0	
P205/70R 14" WSW all-season	0	0	0			
P205/65R 15" BSW all-season	0	0	0	X*	X	
P205/65R 15" WSW all-season	0	0	0	0	0	
P215/65VR 15" BSW						X
Conventional full-size spare tire	0	0	0	0	0	0
3.0L V-6/4-speed automatic (sedan)	0	0	0	X		
3.8L V-6/4-speed automatic (sedan)		0	0	0	X	
3.8L V-6/4-speed automatic (wagon)		0	0	X	X	
3.0L DOHC 24-valve V-6/5-speed manual						X
18.6-gal. extended-range fuel tank	0	0	0	0	X	X
Engine block immersion heater	0	0	0	0	0	0
Heavy-duty load-carrying suspension (with V-6 engine)	0	0	0	0	0	

(1) Stereo system included in package may be deleted for credit. (2) Six premium speakers plus power amplifier. (3) Tachometer plus alert lights for door ajar, low washer fluid, low oil level, low fuel, headlamp out. Included in optional Electronic Instrument Cluster. Unique system in Taurus SHO (see page 22). (4) Dual beam map light, engine compartment light, dual courtesy light under instrument panel, plus headlamps on reminder chime.

SPECIFICATIONS AND MEASUREMENTS

TAURUS L, GL, LX SPECIFICATIONS

Drivetrain	Front-wheel drive
Engine type (See page 25 for availability by model)	2.5L I-4; 3.0L V-6; 3.8L V-6
Fuel induction system	Electronic central fuel injection (I-4 engine) Electronic multi-port fuel injection (V-6 engines)
Engine controls	Electronic Engine Control (EEC-IV) computer
Horsepower, SAE net	2.5L I-4: 90 @ 4400 rpm 3.0L V-6: 140 @ 4800 rpm 3.8L V-6: 140 @ 3800 rpm
Torque, SAE net	2.5L I-4: 130 lb.-ft. @ 2600 rpm 3.0L V-6: 160 lb.-ft. @ 3000 rpm 3.8L V-6: 215 lb.-ft. @ 2200 rpm
Transaxles	3-speed fluid linked overdrive (I-4 engine) 4-speed automatic overdrive (V-6 engines)
Front suspension (sedan/wagon)	Independent MacPherson type, gas-pressurized struts with coil springs; stabilizer bar (.81" — sedan; .87" — wagon)
Rear suspension (sedan)	Independent MacPherson type, gas-pressurized struts with coil springs; .79" stabilizer bar (with V-6 engines)
Rear suspension (wagon)	Independent short/long arm (SLA) type, gas-pressurized shock absorbers; variable rate conical coil springs; .59" stabilizer bar
Steering	Power rack-and-pinion, 15.25:1 ratio
Turning diameter (curb-to-curb)	38.1 ft.
Brakes	Power-assisted front discs/rear drums

Based on 1989 MVMA Passenger Car Specifications.

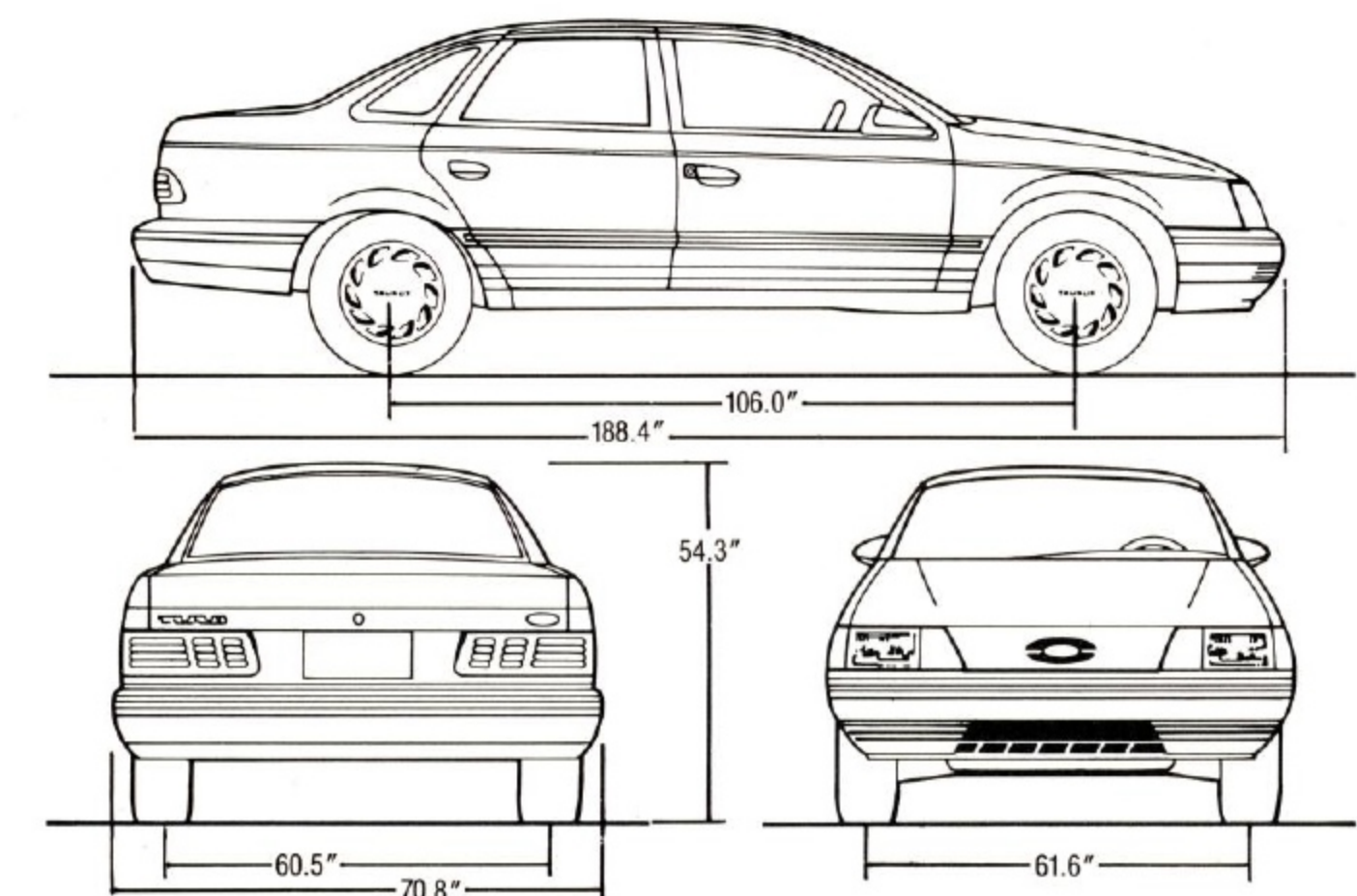
TAURUS L, GL, LX MEASUREMENTS

	Sedan	Wagon
Wheelbase	106.0"	106.0"
Length	188.4"	191.9"
Height	54.3"	55.1"
Width	70.8"	70.8"
Tread: front	61.6"	61.6"
Tread: rear	60.5"	59.9"
Passenger volume index (cu. ft.)	99.5	99.8
Luggage/cargo volume index (cu. ft.)	17	—
Second seat up	—	45.4
Second seat down	—	80.7
Fuel capacity (gal.)*	16.0	16.0
Passengers**	6	6

Based on 1989 MVMA Passenger Car Specifications.

*16.6 with optional extended-range fuel tank. Included in LX Preferred Equipment Package 208A.

**5 with bucket seats. 8 in wagons with optional rear facing third seat. 7 in wagons with front buckets and optional rear facing third seat.



COLORS AND TRIMS

TAURUS SHO SPECIFICATIONS

Drivetrain	Front-wheel drive
Engine type	3.0L DOHC 24-valve V-6
Fuel Induction system	Sequential electronic multi-port fuel injection
Engine controls	Electronic Engine Control (EEC-IV) computer
Exhaust system	Dual
Horsepower, SAE net	220 @ 6200 rpm
Torque, SAE net	200 lb.-ft. @ 4800 rpm
Transaxle	5-speed manual overdrive Gear ratios: 3.21:1 (1st), 2.09:1 (2nd), 1.38:1 (3rd), 1.02:1 (4th), 1.02:1 (5th), 3.14:1 (reverse) Transfer ratios: 3.74:1 (1st thru 4th gears and reverse), 2.73:1 (5th gear)
Clutch	9.25" diameter
Front suspension	Independent MacPherson type with performance handling components including higher rate strut valving, stiffer suspension bushings, and larger .94" stabilizer bar
Rear suspension	Independent MacPherson type with performance handling components including higher rate strut valving, stiffer suspension bushings; larger 1.05" stabilizer bar
Steering	Power rack-and-pinion, 15.25:1 ratio
Turning diameter (curb-to-curb)	38.1 ft.
Brakes	Power-assisted 4-wheel discs

Based on 1989 MVMA Passenger Car Specifications.

TAURUS SHO MEASUREMENTS

	Sedan
Wheelbase	106.0"
Length	188.4"
Height	54.3"
Width	70.8"
Tread: front	61.6"
Tread: rear	60.5"
Passenger volume index (cu. ft.)	99.5
Luggage volume index (cu. ft.)	17
Fuel capacity (gal.)	18.6
Passengers	5

Based on 1989 MVMA Passenger Car Specifications.

COLORS AND TRIMS

Interior Trim Colors

	Titanium (1)	Shadow Blue	Currant Red	Light Sandalwood	Cinnabar (2)
X			X	X	X
X	X		X	X	X
X			X		
X			X		
				X	
				X	
X			X		
X			X		
		X			
		X			
				X	
				X	

(1) Only interior color available for Taurus SHO. (2) Not available on Taurus L and wagon models. (3) One of three exterior colors available for Taurus SHO.

SAFETY AND OWNER BENEFITS

Ford Motor Company strongly encourages all passengers to use their safety belts. Ford urges the use of child and infant restraints. Ford's easy-to-install Tot-Guard (for children 20 to 50 pounds) is available at all Ford Dealers. If a child restraint requires a top-tether, Taurus provides for attachment of an anchor at each rear seating position.



FORD LIFEGUARD DESIGN SAFETY FEATURES

Vehicle operation

☐ Split diagonal hydraulic brake system with warning light ☐ Corrosion-resistant brake lines ☐ Flash-to-pass headlamps ☐ Turn indicator with lane-changing signal feature ☐ Hazard warning flasher ☐ Backup lamps ☐ Parking lamps coupled with headlamps ☐ High-mount stop lamp ☐ Two-speed and variable speed windshield wipers ☐ Windshield washers ☐ Dual outside electric remote-control rearview mirrors ☐ Glare-reduced instrument panel, windshield wiper arms and windshield pillars ☐ Uniform transaxle shift quadrant with safety starting switch (on cars equipped with automatic transaxle) ☐ Clutch or neutral interlock for starter motor (on cars equipped with manual transaxle) ☐ Continuously variable control illumination intensity (instrument cluster lighting) ☐ Safety hood latch system ☐ Responsive windshield defroster system ☐ Tamper-resistant (non-reversing) odometer ☐ Speedometer with highlighted 55-mph (on cars with analog speedometer) ☐ Inertia shut-off switch for electric fuel pumps

Occupant protection

☐ Safety-designed front end structure ☐ Safety-designed roof structure ☐ Steel guard rails in side doors ☐ Safety-designed door hinges and double yoke safety door latches ☐ Integral lap and shoulder belts with automatic retractors for outboard occupants of front and rear seats ☐ Visual and audible safety belt fastening

reminders for the driver's seat ☐ Lap belts with retractors for center front and rear occupants (and optional rear facing third seat in wagons) ☐ Energy-absorbing steering column and steering wheel ☐ Energy-absorbing armrests and safety-designed door handles ☐ Energy-absorbing instrument panel with padding ☐ Energy-absorbing sun visors ☐ Energy-absorbing front seat back tops ☐ Head restraints for front outboard occupants ☐ Safety glove box latch ☐ Inside yieldaway rearview mirror ☐ Impact-absorbing laminated safety glass windshield ☐ Flame-resistant interior materials ☐ Safety-designed coat hooks ☐ Safety-designed radio control knobs and push buttons

5 MILE-PER-HOUR BUMPERS

Ford Taurus has impact-resistant front and rear bumpers that meet the damageability requirements of the Federal Bumper Standard at 5-mph (exceeding the Standard's 2 1/2-mph requirement).

6-YEAR/60,000-MILE POWERTRAIN WARRANTY

Ford's powertrain warranty covers all 1989 cars for 6 years or 60,000 miles, whichever comes first. This limited warranty covers major powertrain components. Certain restrictions and deductible apply. Ask your dealer for a copy.

6-YEAR/100,000-MILE CORROSION WARRANTY

Taurus' corrosion warranty coverage for outer body panel rust-through is 6 years or 100,000 miles, whichever comes first. See your Ford Dealer for details and a copy of this limited warranty.

SCHEDULED MAINTENANCE

Here are some examples of scheduled maintenance intervals for the 1989

Taurus. For complete maintenance recommendations, refer to the Maintenance Schedule and Record Log.

Engine oil change	each 7,500 miles or 6 months
Spark plug change	each 30,000 miles*
Air filter replacement	each 30,000 miles
Engine coolant replacement	each 30,000 miles or 3 years

*60,000 miles for 3.0L SHO V-6.



Participating Ford Dealers offer the Lifetime Service Guarantee, which guarantees their customer-paid work on your new or used Ford vehicle for as long as you own it. A covered repair is paid for once. If it ever has to be fixed again, the repairing dealer will fix it free. Ask to see this limited warranty when you visit your participating Ford Dealer.



Optional Ford Extended Service Plans cover major components on new Ford cars and light trucks for longer than the vehicle's basic warranty. Your Ford Dealer has full details.



Genuine Ford and Motorcraft original equipment replacement parts meet the same high standards as those installed in production.



The leasing alternative is available through your Ford Dealer. A participating dealer can arrange financing terms or a Red Carpet Lease® tailored to your circumstances through Ford Credit.

Ford-paid repair programs after the warranty period

Sometimes Ford offers adjustment programs to pay all or part of the cost

of certain repairs. These programs are intended to assist owners and are in addition to the warranty or to required recalls.

Technical service bulletins

All vehicles need repairs during their lifetime. Sometimes Ford issues technical service bulletins (TSBs) and easy-to-read explanations describing unusual engine or transmission conditions which may lead to costly repairs, the recommended repairs, and new repair procedures. Often a repair now can prevent a more serious repair later.

For more information...

Ask Ford Motor Company or your Ford or Lincoln Mercury, Scorpio, XR4Ti Dealer about Ford-paid repair programs and/or TSBs relating to your vehicle.

To get copies of these materials for your vehicle or the vehicle of interest to you: Call Ford toll-free at 1-800-241-3673. Alaska/Hawaii call 1-800-241-3711 and in Georgia call 1-800-282-0959.

Or write Ford at:

Ford Customer
Information System
Post Office Box 95427
Atlanta, Georgia 30347

We'll need your name and address, year, make, model and vehicle identification number, as well as engine size.

Options availability

Options shown or described in this catalog are available at extra cost and may be offered only in combination with other options or subject to additional ordering requirements or limitations.

Product changes

Ford Division reserves the right to change product specifications at any time without incurring obligations.

"Ask your Ford Dealer"

Following publication of this catalog, certain changes in standard equipment, options, prices and the like, or product delays, may have occurred which would not be included in these pages. Your Ford Dealer is your best source for up-to-date information.

