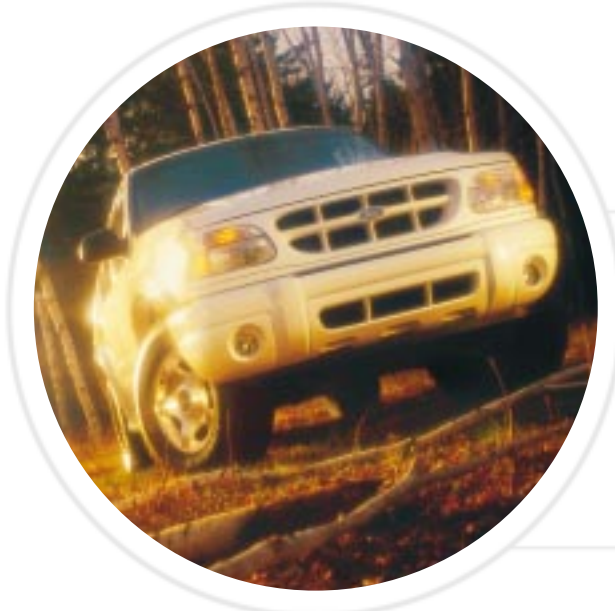


2000

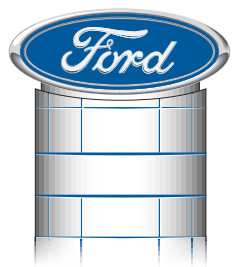
T W O T H O U S A N D

EXPLORER

00000



THE CHANGES BEHIND THE FORD OVAL



The face of Ford of Canada is changing. With the introduction of our year 2000 models all Ford and Mercury cars and Ford trucks, are available under the familiar blue Ford oval.

As our valued customer, owning or leasing a **Ford of Canada** vehicle is simpler and more convenient than ever before. You will continue to have a selection of premium cars, trucks and sport utility vehicles, with the added support of enhanced sales and service experiences.



Visit your local **Ford of Canada** dealership to drive any one of our fine year 2000 vehicles.

2000 Explorer. Performance Limited Only By Your Imagination.

It wasn't named Explorer on a whim. It was built for those who don't cancel dates due to rain. It was built to be the first to carve two channels in the freshly downed snow on whatever it's called avenue. Explorer offers the ideal vantage point from which to look down on excuses. Enjoy the crystal-clear view.

It's never been easier to get into something that can get you out of just about anything. Outfit yourself for all-around accessibility in either the 2-door Explorer Sport, or the 4-door Explorer - both with 4x4 power and performance.

It's amazing what kind of world an Explorer can find.



The 2000 4-door Explorer is available in XLS, XLT, Eddie Bauer and Limited models making it easy to choose an Explorer that meets your needs.



When you equip your 2-door Explorer Sport with the optional Premium Sport Group (as seen here) you'll enjoy such features as fog lamps, OWL all-terrain tires and a side step bar - just to name a few.

Explorer 4-Door Embodies The Spirit Of Off-Road Adventure.

No matter what the conditions are on the outside, Explorer 4-door provides a very civilized sanctuary for five on the inside. Convenience items range from the traditional to the sophisticated. Some of the standard features you'll enjoy include power windows, door locks and mirrors and AM/FM stereo with cassette (a CD player is included on the XLT, Eddie Bauer and Limited).

We know you also like to take plenty of stuff with you when you go out in your Explorer. Inside Explorer 4-door you'll find plenty of room for both your cargo and your friends. In the front, bucket seats are in order for the driver and passenger, while the rear bench seat includes a handy split/fold feature so you can easily accommodate extra long cargo. It's carpeted throughout and even includes front and rear floor mats and a reversible cargo mat (not available on XLS) to protect your Explorer from dirt that may get tracked in from your day on the hiking trails

Enjoy the outside inside with the optional moonroof (available on XLT, Eddie Bauer, Limited and Sport only). Open it completely with the touch of a button or just tilt it up.



Explorer's handy split/fold rear seat gives you extra cargo space for longer items.



Leather seating surfaces and a leather-wrapped steering wheel (seen here) are luxurious standard features on the Explorer 4-door Eddie Bauer and Limited.

No Matter What Roads You Travel, Explorer 2-Door Sport Makes Sure You're Comfortable



Explorer Sport's comfortable interior is equipped with such standard features as air conditioning, AM/FM stereo with cassette and a handy floor console. Or, to make your Explorer Sport even more luxurious, add the optional leather seats (seen here).



The Explorer Sport's interior features dual front cloth captain's chairs with a rear split-fold seat that can easily accommodate longer pieces of cargo.

Whether you're cruising the boulevard or hitting the back roads, you don't want to leave your comfort back home.

Explorer Sport's seating, in cloth or available leather trim, is crafted from materials of exceptional quality and designed to help insulate you from rough road treatment.

In the Explorer Sport your belongings never take a back seat, figuratively speaking. The large cargo area is versatile and decidedly indiscriminate, transporting skiing gear or sizable table lamps with equal enthusiasm. It's all about making life a little easier.

Explorer 4-Door Delivers Outstanding Performance Regardless Of The Road Surface.

The performance capability of the Explorer 4-door isn't just impressive on the back roads, but it also shines through during those everyday trips like running to the video store, or commuting downtown to work. Whenever you need that power to pass, or the ability to come to a quick and safe stop, Explorer is there for you.

Explorer 4-door XLS and XLT feature a powerful 4.0L OHV V6 engine,

while the Eddie Bauer and

Limited models are

equipped with a

4.0L SOHC

version of the V6

(4.0L SOHC V6

engine optional on

XLS and XLT). If you

choose the All-Wheel

Drive model, then a hefty

5.0L engine is what you'll enjoy.

Front and rear stabilizer bars along

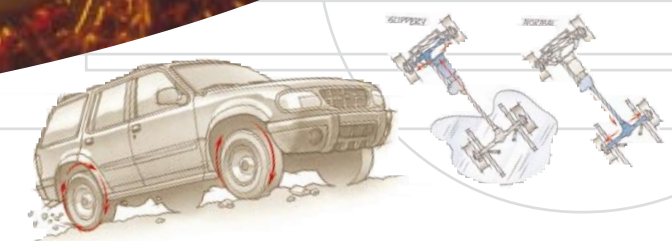
with precise rack-and-pinion steering handle

the handling, while 4-wheel anti-lock brakes (ABS) help

you come to a safe stop.

So yes, you can deal with the wild conditions of the back roads, but you can also deal with the not-so-tame city street situations too.

Explorer 4-door is equipped with a powerful, responsive 4.0L engine that is teamed with 5-speed automatic transmission with overdrive (5-speed manual transmission on XLS).

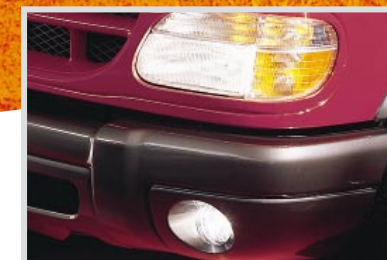
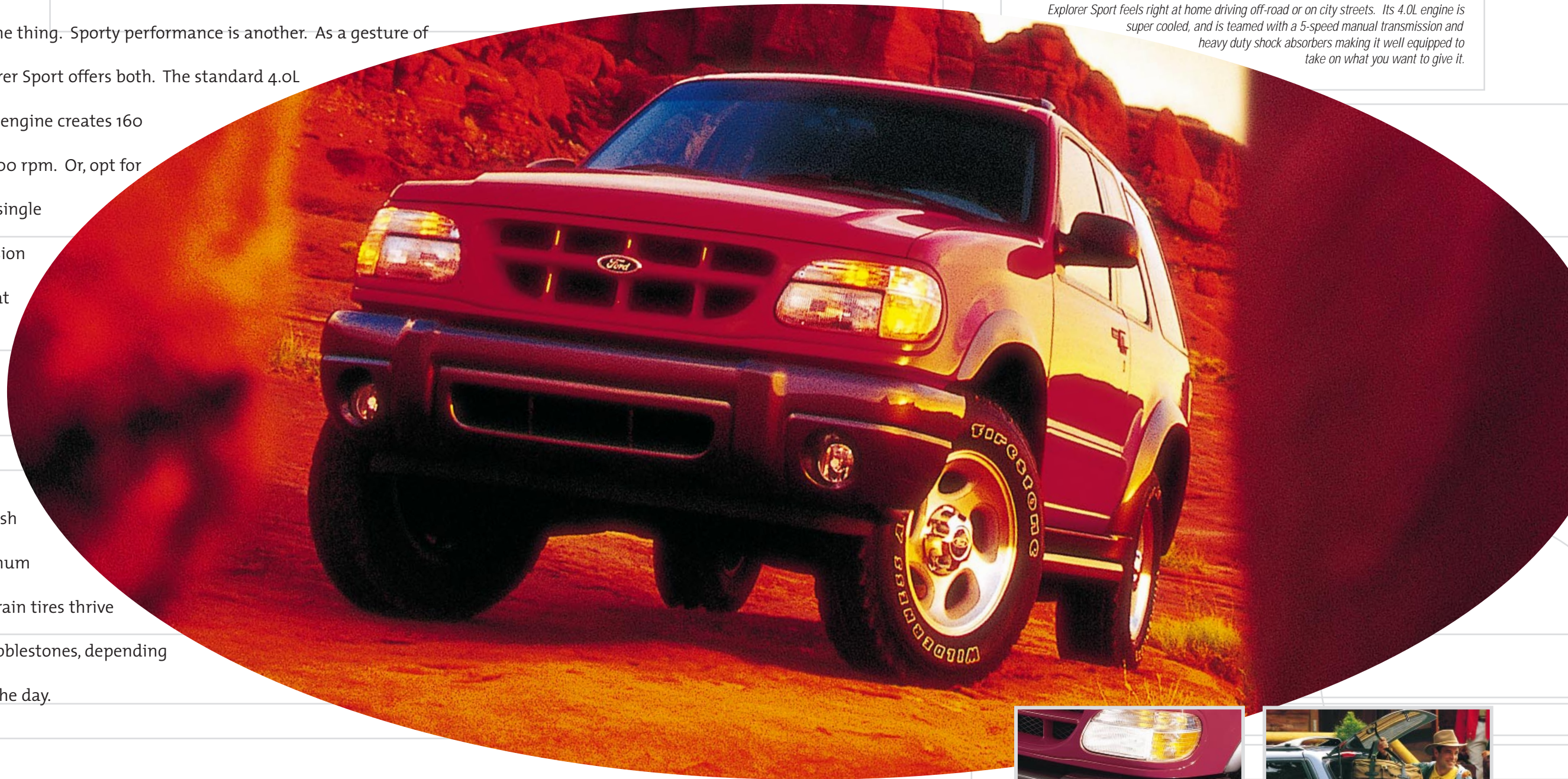


All Explorer models with V6 engine feature Control-Trac. V8 engines feature All-Wheel Drive. Both systems can automatically vary the wheel torque depending on driving conditions. Both can sense wheel slippage and send the majority of the torque to the set of wheels with better traction, either front or rear, when necessary. Control-Trac settings are controlled by the driver. All-Wheel Drive has no driver settings. It's always operating. For details, consult your Owner Guide.

City Streets Or Cottage Roads, Explorer 2-Door Sport Delivers Performance.

Sporty looks are one thing. Sporty performance is another. As a gesture of conciliation, Explorer Sport offers both. The standard 4.0L overhead valve V6 engine creates 160 horsepower at 4,200 rpm. Or, opt for the available 4.0L single overhead cam version and get a full 210 at 5,250 rpm. Either way, the idea of heading for hills gets a lot less daunting. Deep dish design cast aluminum wheels and all-terrain tires thrive on dirt trails or cobblestones, depending on the activity of the day.

Explorer Sport feels right at home driving off-road or on city streets. Its 4.0L engine is super cooled, and is teamed with a 5-speed manual transmission and heavy duty shock absorbers making it well equipped to take on what you want to give it.

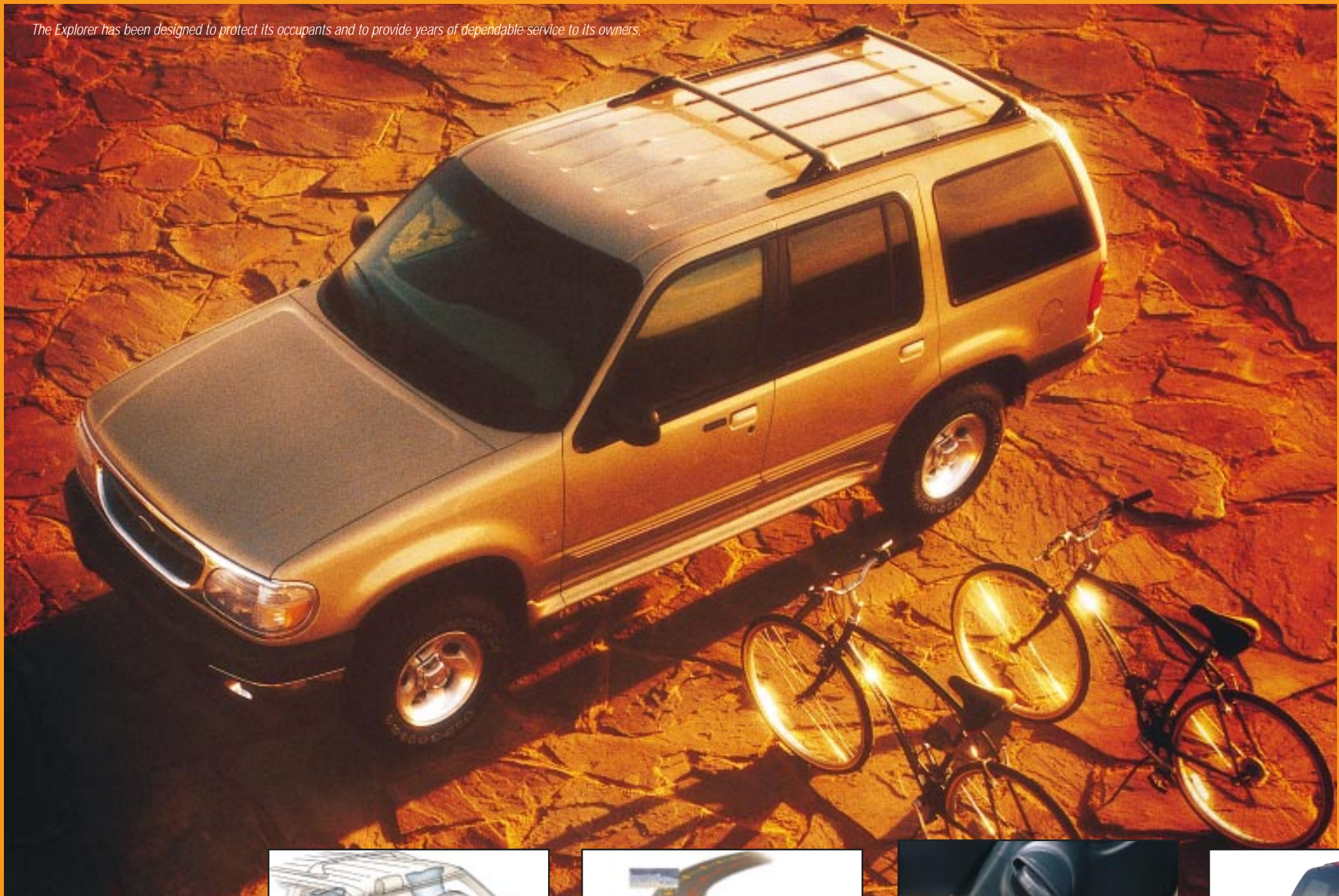


Fog lamps (a feature in the optional Explorer Sport Premium Sport Group and standard on Explorer 4-door XLT, Eddie Bauer and Limited) help improve visibility when driving in bad weather conditions.



All Explorer models include this "flip glass" feature that lets you open the entire liftgate, or just the upper portion for easy loading and unloading.

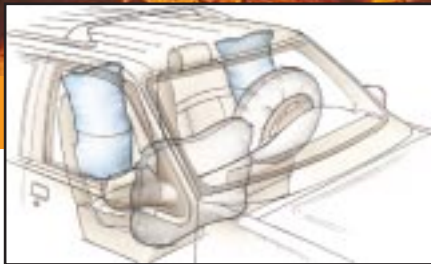
Designed To Protect You Wherever You Go.



No matter what road you decide to take, Explorer is equipped with the safety features to help make sure your drive is a safe one.

The standard 4-wheel anti-lock braking system (ABS) gives you better steering control when stopping on slippery or wet roads. Side door intrusion beams help protect the occupants in the event of a side collision, while the dual Second Generation air bags deliver additional protection to the driver and front passenger. The standard SecuriLock™ anti-theft system reads your encoded key before it starts the engine, to help stop would-be thieves, while the illuminated entry system lights up the interior before you open the door.

With all these standard safety features, Explorer's outstanding performance is taken to a new level.



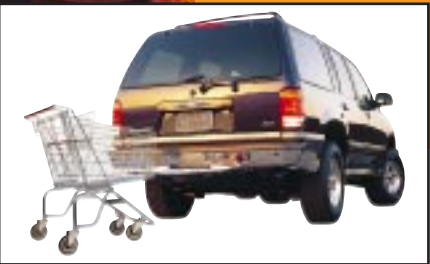
The available front seat side-impact air bags help increase your perimeter of protection and enhances your feeling of security on the road.



The standard 4-wheel anti-lock braking system (ABS) helps you with steering control while braking under most conditions, even on wet or slippery surfaces.



The SecuriLock™ anti-theft system cleverly "interrogates" the ignition key, preventing the engine from being started by potential thieves.



The optional Reverse Sensing System alerts the driver to the presence of certain objects near the rear of the vehicle when backing up during parking maneuvers. Ultrasonic sensors in the bumper detect obstacles up to 1.8 meters (six feet) to the rear. Beeping with increasing frequency, indicates that Explorer is closing in on the object. Perfect for parallel parking. (Not available on Explorer XLS).

Explorer 4-Door Standard and Optional Features

FUNCTIONAL FEATURES	XLS	XLT	EDDIE BAUER	LIMITED
4.0L OHV V6 engine with 5-speed manual transmission	STD	–	–	–
4.0L OHV V6 engine with 5-speed automatic transmission	OPT	STD	–	–
4.0L SOHC V6 engine with 5-speed automatic transmission	OPT	OPT	STD	STD
5.0L engine with 4-speed automatic transmission (with All-wheel-Drive only)	–	OPT	OPT	OPT
4-wheel anti-lock braking system (ABS)	STD	STD	STD	STD
Side door intrusion beams	STD	STD	STD	STD
Second Generation dual front air bags	STD	STD	STD	STD
Front side air bags	OPT	OPT	OPT	OPT
SecuriLock™ anti-theft system	STD	STD	STD	STD
Reverse Sensing System	–	OPT	OPT	OPT
Rear load leveling	–	OPT	OPT	OPT
Trailer towing prep package	OPT	OPT	OPT	OPT
Engine block heater	STD	STD	STD	STD
Rocker two-tone paint	–	OPT	–	–
Side step bars	PKG	PKG	–	–
Skid plates	OPT	OPT	OPT	OPT
EXTERIOR FEATURES				
Grille, (bright with painted insert and diamond mesh)	STD	STD	STD	–
Grill, (body-colour with diamond mesh)	–	–	–	STD
Fog lamps	–	STD	STD	STD
Solar tinted glass	STD	STD	STD	STD
Enhanced appearance privacy glass in rear quarters, rear doors and rear windows	–	STD	STD	STD
Liftgate with flip-up glass	STD	STD	STD	STD
Luggage rack	STD	STD	STD	STD
Electric remote mirrors	STD	STD	STD	–
Electric remote heated mirrors, with puddle lamps	–	–	–	STD
Colour-keyed bodyside mouldings	STD	STD	STD	STD
Wheelip mouldings	PKG	PKG	STD	STD
Running boards (illuminated on Limited)	–	OPT	STD	STD
Wipers, speed-sensitive, dual intermittent	STD	STD	STD	STD
Rear intermittent wiper/washer/defroster	STD	STD	STD	STD
Keyless entry pad	PKG	STD	STD	STD
Tape stripe	–	–	–	STD

INTERIOR COMFORT AND CONVENIENCE FEATURES	XLS	XLT	EDDIE BAUER	LIMITED
Air conditioning, manual	STD	STD	–	–
Air conditioning, electronic automatic temperature control	–	–	STD	STD
Adjustable-height outboard front safety belts	STD	STD	STD	STD
Illuminated entry system	STD	STD	STD	STD
Child proof rear door locks	STD	STD	STD	STD
Remote Keyless Entry system	PKG	STD	STD	STD
Retractable cargo area cover	–	STD	STD	STD
Colour-keyed carpeting	STD	STD	STD	STD
Reversible cargo mat	–	STD	STD	STD
Low-series floor console	STD	–	–	–
Hi-series floor console (includes dual cup holders, ashtray, rear armrest, rear radio and rear heater/AC controls)	–	STD	STD	STD
Front overhead console (includes deluxe front map/reading lamps, compass and outside temperature)	–	STD	STD	STD
Illuminated entry system	STD	STD	STD	STD
Power lock/unlock liftgate button	STD	STD	STD	STD
Electrochromic rearview mirror with autolamp	–	OPT	STD	STD
Power Equipment Group (includes power windows, door locks with illuminated controls, one-touch-down feature for driver's window, electric mirrors, accessory delay, interior lock/unlock button in cargo area)	STD	STD	STD	STD
Speed control with tilt steering column	PKG	STD	STD	STD
Black deluxe leather-wrapped steering wheel	–	STD	–	–
Colour-keyed leather-wrapped steering wheel with auxiliary audio, climate and speed controls	–	–	STD	STD
Illuminated dual visor vanity mirrors	–	–	STD	STD
Universal garage door opener with Travelnote	–	–	STD	STD
Cloth captain's chairs	STD	–	–	–
Unique cloth captain's chairs	OPT/PKG	–	–	–
Sport cloth front bucket seats, with 6-way power driver's seat and driver/passenger lumbar support	–	STD	–	–
Sport leather bucket seats, with 6-way power driver/passenger seats and lumbar support	–	OPT	STD	–
Limited sport leather heated front bucket seats with 6-way power passenger/driver seats and driver memory, power driver/passenger lumbar support	–	–	–	STD
60/40 split fold rear seat	STD	STD	STD	STD
Power moonroof with shade	–	OPT	OPT	OPT

AUDIO SYSTEMS	XLS	XLT	EDDIE BAUER	LIMITED
Electronic AM/FM stereo with cassette, clock and 2 speakers	STD	–	–	–
Electronic AM/FM stereo with single CD player, clock and 2 speakers	OPT	STD	–	–
Electronic AM/FM stereo with clock, cassette and single CD	OPT	OPT	–	–
Ford MACH audio system with cassette and single CD	–	OPT	STD	STD
6-disc CD changer	–	OPT	OPT	OPT
INSTRUMENTATION	XLS	XLT	EDDIE BAUER	LIMITED
Four gauge instrument cluster with warning lights, trip odometer and tachometer	STD	STD	STD	STD
Colour-keyed full width instrument panel pad with side window demisters and air registers	STD	STD	STD	STD
Message centre with fuel and other warning messages	–	–	–	STD
WHEELS AND TIRES	XLS	XLT	EDDIE BAUER	LIMITED
15" deep dish cast aluminum	STD	–	–	–
15" luxury cast aluminum	–	STD	–	–
16" machined aluminum	–	PKG	STD	–
16" Limited cast aluminum	–	–	–	STD
15" chrome steel	PKG	–	–	–
P235/75Rx15SL OWL all-terrain	STD	STD	–	–
P255/70Rx16SL OWL all-terrain	–	PKG	STD	STD

STD = Standard Feature; OPT = Optional Feature; PKG = Feature only available in an Option Group; – = Not Available

Wheels





A 15" deep dish cast aluminum wheel (standard on XLS)

B 15" chrome steel wheel (included in XLS Sport Group option)







C 15" luxury cast aluminum wheel (standard on XLT)

D 16" machined aluminum wheel (standard on Eddie Bauer, included in XLT Sport Group option)

E 16" Limited cast aluminum wheel (standard on Limited)

Specifications

ENGINE SPECIFICATIONS					
Engine	Displacement (liters/cubic inches)	Bore x Stroke	Compression Ratio	Horsepower (SAE net)	Torque, lbs./ft. (SAE net)
4.0L OHV V6	4.0/245	3.95 x 3.32	9.0:1	160 @ 4,200 rpm	225 @ 2,750 rpm
4.0L SOHC V6	4.0/245	3.95 x 3.32	9.7:1	210 @ 5,250 rpm	240 @ 3,250 rpm
5.0L SOHC V6	5.0/302	4.00 x 3.00	9.05:1	215 @ 4,200 rpm	288 @ 3,300 rpm
MAXIMUM TRAILER TOWING WEIGHTS KGS(LBS.)					
			Axle Ratio	Maximum GCWR	4-Door 4x4
5.0L OHV V8/4-spd. auto. OD			3.55	4086 (10,000)	2549 (5,620)
			3.73	4990 (11,000)	3003 (6,620)
4.0L SOHC V6/5-spd. auto. OD			3.55	4082 (9,000)	2150 (4,740)
			3.73	4536 (10,000)	2604 (5,740)
			4.10	4536 (10,000)	2604 (5,740)
4.0L OHV V6/5-spd. auto. OD			3.55	3629 (8,000)	– –
			3.73	4082 (9,000)	2159 (4,760)
4.0L OHV V6/5-spd. man. OD			3.27	2722 (6,000)	– –
			3.55	2948 (6,500)	1043 (2,300)
			3.73	3175 (7,000)	1270 (2,800)
POWERTRAIN/DRIVETRAIN COMBINATIONS BY SERIES/PACKAGE					
	XLS		XLT	Eddie Bauer	Limited
4.0L Powerteam – OHV/SEFI V6	5-spd. man. OD		–	–	–
4.0L Powerteam – OHV/SEFI V6	5-spd. auto.		5-spd. auto. OD*	–	–
4.0L Powerteam – OHV/SEFI V6	5-spd. auto.		5-spd. auto. OD*	5-spd. auto. OD	5-spd. auto. OD
5.0L Powerteam – OHV/SEFI V8	–		4-spd. auto. OD*	4-spd. auto. OD	4-spd. auto. OD
Drivetrain – V6	Control-Trac w/4.0L		Control-Trac w/4.0L	Control-Trac w/4.0L	Control-Trac w/4.0L
Drivetrain – V8	–		AWD w/5.0L	AWD w/5.0L	AWD w/5.0L
NOTE: Engine/axle ratio combinations shown may not be available in all areas. Your Ford Dealer can supply availability information. All maximum trailer weights shown must be reduced by passenger and cargo weight in the towing vehicle. The following equipment may be required: load-carrying hitch for towing trailers under 3,500 pounds with the standard rear step bumper; load-equalizing hitch for towing trailers over 3,500 pounds. For specific information on recommended or required equipment, see your dealer.*Equipment at no charge.					
DIMENSIONS, MM (IN.)					
Cargo length					
- with rear seat up at belt				983 (38.7)	
- with rear seat down at belt				1814 (71.4)	
Cargo volume, litres (cu. ft.)					
-with rear seat up				1172 (41.4)	
-with rear seat down				2260 (79.8)	
Overall height (max.- empty)				1714 (67.5)	
Overall length				4844 (190.7)	
Overall width				1783 (70.2)	
Wheelbase				2835 (111.6)	

Explorer 4-Door Features



Explorer XLS

- Air conditioning
- 4-wheel anti-lock braking system (ABS)
- Luggage rack
- Power windows, door locks, mirrors
- 15" deep dish cast aluminum wheels
- SecuriLock™ anti-theft system
- 60/40 split/fold rear seat
- Colour-keyed bodyside moulding



Eddie Bauer

- Includes all XLT features plus;
- Premium console equipped with message centre
 - Colour-keyed running boards
 - Auxiliary audio controls located on steering wheel
 - MACH Audio System (290 watt)
 - Automatic temperature control
 - 16" machined aluminum wheels



Explorer XLT

- Includes all XLS features plus;
- Remote Keyless Entry system
 - Cloth sport bucket seats with power driver's seat
 - Overhead console
 - Keypad/autolock
 - 15" luxury cast aluminum wheels



Limited

- Includes all Eddie Bauer features plus;
- Heated mirrors and puddle lamps
 - Electronic automatic temperature control
 - Heated front seats with premium leather trim
 - Colour-keyed grille

Group Option Packages

XLS CONVENIENCE GROUP

- Includes:
- Cargo cover
 - Privacy glass
 - Remote Keyless Entry system
 - Speed control with tilt steering column

XLS SPORT GROUP

- Includes:
- Unique cloth captain's chairs
 - Side step bar
 - Wheelip mouldings
 - Fog lamps
 - Electronic AM/FM stereo with clock/single CD player
 - Removable storage bag
 - 15" chrome steel wheels

XLT SPORT GROUP

- Includes:
- Colour-keyed bodyside moulding and grille
 - Door mounted XLT badging
 - Front and rear bumpers
 - Side step bar
 - Wheelip moulding system
 - P255/70R16 OWL all-terrain tires
 - 16" machined aluminum wheels

Dealer Accessories

Make your Explorer unique by adding one of these optional Dealer accessories. Check with your local Dealer for availability.



A heavy-duty cargo liner helps protect the rear area and is attached with Velcro™-like fasteners.



To protect your Explorer from insects, dirt and other debris add an aero hood deflector.

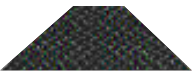


Transport your bikes safely with a bike rack that allows secure fastening.

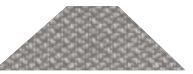


Padded clamps on this ski rack help guard against damage. The rack can handle up to six pairs of skis or four snowboards.

Interior Colours



Dark Graphite



Medium Graphite



Medium Prairie Tan

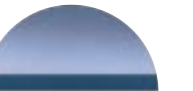
Exterior Colours*



Harvest Gold Clearcoat Metallic



Toreador Red Clearcoat Metallic



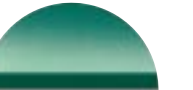
Medium Wedgewood Blue Clearcoat Metallic



Black Clearcoat



Spruce Green Clearcoat Metallic



Tropic Green Clearcoat Metallic



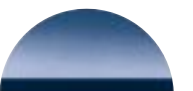
Oxford White Clearcoat



White Pearl Tri-coat Clearcoat Metallic



Medium Platinum Clearcoat Metallic†



Deep Wedgewood Blue Clearcoat Metallic



Chestnut Clearcoat Metallic

*Not all colours are available on all models. See your Dealer for details.
† (available as a lower two-tone colour only)

Explorer Sport Standard and Optional Features

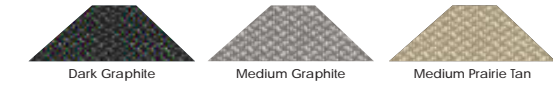
FUNCTIONAL FEATURES	
4.0L OHV/SEFI V6 engine	STD
5-speed manual transmission	STD
5-speed automatic transmission with overdrive	OPT
4.0L SOHC/SEFI V6 engine	OPT
4-wheel anti-lock braking system (ABS)	STD
Side door intrusion beams	STD
SecuriLock™ anti-theft system	STD
Trailer towing prep package	OPT
Skid plates	OPT
Engine block heater	STD
EXTERIOR FEATURES	
Painted body colour grille with diamond mesh insert	STD
Solar-tinted glass	STD
Enhanced appearance privacy glass on rear quarter, rear door and liftgate windows	STD
Flip-out rear quarter windows	STD
Liftgate with flip-up glass	STD
Luggage rack	STD
Electric remote mirrors	STD
Colour-keyed bodyside mouldings	STD
High-mount rear stop lamp	STD
Speed sensitive, dual intermittent wipers	STD
Rear window intermittent wiper/washer/defroster	STD
Side step bar	OPT
AUDIO SYSTEMS	
Electronic AM/FM stereo/cassette/clock and two speakers in quarter trim panels	STD
Electronic AM/FM stereo/clock/single CD player	PKG
Electronic AM/FM stereo/clock/cassette/single CD player	OPT
Ford MACH Audio System/cassette/single CD player	OPT
6-disc CD changer (requires Comfort Group option)	OPT
INSTRUMENTATION	
Colour-keyed full-wide instrument panel pad, with side window demisters and air registers	STD
Four gauge instrumentation with warning lights, trip odometer and tachometer	STD

INTERIOR COMFORT AND CONVENIENCE FEATURES	
Second Generation driver and front passenger air bag supplemental restraint system	STD
Front side air bags	OPT
Adjustable height outboard front safety belts	STD
Front cloth captain's chairs	STD
Rear split/fold cloth seat	STD
Leather sport bucket seats with 6-way power driver/passenger seats and manual driver/passenger lumbar support	OPT
Low series floor console	STD
Air conditioning - manual	STD
Colour-keyed carpeting	STD
Illuminated entry system	STD
Power equipment group (includes power window/door locks with illuminated controls, one-touch-down feature for driver's window, electric mirrors, accessory delay and interior lock/unlock button in cargo area)	STD
12 volt power point	STD
Remote keyless entry system	OPT
Power moonroof	OPT
WHEELS AND TIRES	
15" deep dish cast aluminum wheels	STD
P235/75R15SL OWL all-terrain tires	STD

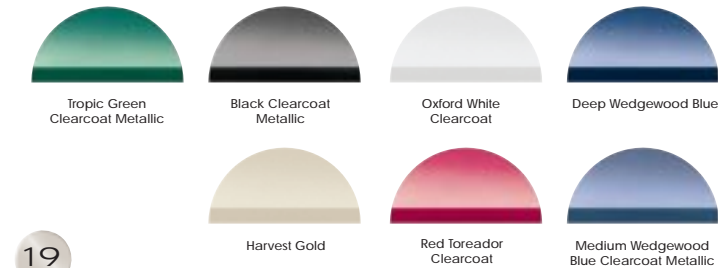
STD = Standard Feature; OPT = Optional Feature

DIMENSIONS, MM (IN.)	
Cargo height	
- with rear seat up at belt	780 (30.7)
- with rear seat down at belt	1562 (61.5)
Cargo volume, litres (cu. ft.)	
-with rear seat up	1008 (35.6)
-with rear seat down	1988 (70.2)
Overall height (max. - empty)	1702 (67.0)
Overall length	4592 (180.8)
Overall width	1783 (70.2)
Wheelbase	2583 (101.7)

Interior Colours



Exterior Colours



Wheels



A 15" deep-dish cast aluminum wheel (standard)
B 16" machined aluminum wheel (included in Premium Sport Group option)

Specifications

ENGINE SPECIFICATIONS					
Engine	Displacement (liters/cubic inches)	Bore x Stroke	Compression Ratio	Horsepower (SAE net)	Torque, lbs./ft. (SAE net)
4.0L OHV V6	4.0/245	3.95 x 3.32	9.0:1	160 @ 4,200 rpm	225 @ 2,750 rpm
4.0L SOHC V6	4.0/245	3.95 x 3.32	9.7:1	210 @ 5,250 rpm	240 @ 3,250 rpm
MAXIMUM TRAILER TOWING WEIGHTS KGS (LBS.)					
	Axle Ratio	Maximum GCWR	2-Door 4x4		
4.0L SOHC V6/5-spd. auto. OD	3.27	3402 (7,500)	1560 (3,440)		
	3.55	3856 (8,500)	2014 (4,440)		
	3.73	4082 (9,000)	2241 (4,940)		
	4.10	4082 (9,000)	2241 (4,940)		
4.0L OHV V6/5-spd. auto. OD	3.55	3629 (8,000)	- -		
	3.73	4082 (9,000)	2250 (4,960)		
	4.10	4082 (9,000)	2250 (4,960)		
4.0L OHV V6/5-spd. man. OD	3.27	2722 (6,000)	907 (2,000)		
	3.55	2948 (6,500)	1131 (2,500)		
	3.73	3175 (7,000)	1361 (3,000)		
	4.10	3175 (7,000)	1361 (3,000)		
POWERTRAIN/DRIVETRAIN COMBINATIONS					
4.0L Powertrain – OHV/SEFI V6		5-spd. man. OD			
4.0L Powertrain – OHV/SEFI V6		5-spd. auto. OD			
4.0L Powertrain – SOHC/SEFI V6		5-spd. auto. OD			
NOTE: Engine/axle ratio combinations shown may not be available in all areas. Your Ford Dealer can supply availability information. All maximum trailer weights shown must be reduced by passenger and cargo weight in the towing vehicle. The following equipment may be required: load-carrying hitch for towing trailers under 3,500 pounds with the standard rear step bumper; load-equalizing hitch for towing trailers over 3,500 pounds. For specific information on recommended or required equipment, see your dealer.					
TRANSMISSION					
5-speed manual (standard)					
5-speed automatic with overdrive (optional)					
BRAKES					
4-wheel power disc with 4-wheel anti-lock braking system (ABS)					
SUSPENSION					
Front – Independent SLA, torsion bar (computer selected), gas pressurized shock absorbers, stabilizer bar					
Rear – Semi-floating type rear axle (limited slip differential optional), 2-stage variable-rate leaf springs (computer-selected), gas pressurized shock absorbers, stabilizer bar					
Frame – Ladder-type, single channel with six crossmembers					
STEERING					
Power-assisted rack-and-pinion, 17:1 ratio					
ELECTRICAL					
Battery – 72 A.H., 650 CCA maintenance-free with battery saver					
Alternator – 70/115 amps					

Dealer Accessories

Customize your Explorer Sport by adding one of these Dealer accessories. See your local Dealer for availability.



A Class III trailer hitch. The ball-mount must be purchased separately.



An aero hood deflector helps protect the hood from insects, dirt and other debris



A ski rack comes with a wide range of capacities (up to 6 pairs of skis or 4 snowboards). Padded clamp assemblies help guard against damage.



A heavy-duty cargo liner helps protect the rear area and is attached with Velcro™ like fasteners.



The bike rack and removable roof rack accessories allow you to securely fasten bikes for easier and safer transport.

Group Option Packages

CONVENIENCE GROUP
Includes:
• Cargo cover
• Floor mats
• Remote keyless entry system
• Speed control with tilt steering column
COMFORT GROUP
Includes:
• Keypad/autolock
• Cloth sport bucket seats with power driver's seat
• Electronic AM/FM stereo/clock/single CD player
• Hi-series floor console
• Illuminated dual visor vanity mirrors
• Overhead console
• Electrochromic mirror/autolamp
• Puddle lamps
PREMIUM SPORT GROUP
Includes:
• Wheelip moulding system
• Fog lamps
• Front and rear bumpers
• Side step bar
• P255/70Rx16 OWL all-terrain tires
• 16" machined aluminum wheels
• Rear tow hooks

The Ford Consumer Commitment

36-Month Warranty

The 36-month/60,000 km limited warranty covers the complete vehicle (except tires, and other items listed in the Warranty Guide) against defects in factory-supplied materials or workmanship. Ford of Canada's corrosion warranty covers against corrosion perforation on body sheet metal panels for 5 years/unlimited distance. Each vehicle is protected with an enhanced corrosion protection system.

24-Hour Roadside Assistance

You can count on Ford Quality now and down the road. That's because every new Ford of Canada car and light truck includes the assurance of an emergency no-cost Roadside Assistance Program during the 3-year/60,000 km warranty period. Help is just a toll-free phone call away - 24 hours a day anywhere in Canada or the continental United States - should you ever need trip planning, towing assistance, fuel delivery, a tire change, a jump start, emergency travel reimbursement or even help when you're locked out of your vehicle.

Ford Credit

Ford Credit is a full service company that makes a wide variety of financing and leasing programs available to every qualified buyer. Ford Credit's Red



Carpet Lease offers you the best choice of new vehicle leasing options and is available on the entire line of quality built Ford of Canada products. Ford Credit offices are located across Canada.



Quality Care Maintenance

Regular maintenance is essential to the proper operation, safety, and performance of your Ford of Canada vehicle and will assist in maintaining your warranty. Ford trained technicians are well equipped to perform required maintenance on your vehicle.



Ask Your Dealer

Following the publication of this catalogue, certain changes in standard equipment, options, prices or product delays may have occurred which would not be included in these pages. Ford Motor Company of Canada, Limited, reserves the right to make these changes without incurring obligations of any kind. Your Ford of Canada Dealer is your best source for up-to-date information.

Customer Information Hotline 1-800-561-FORD

Should you require any additional general or program information, call our toll-free Customer Information Hotline for prompt, courteous assistance.

Ford On The Internet

For more product information on the complete line-up of Ford Vehicles, visit our web site at www.ford.ca

On-Line Shopping

Ford's Buyer Connection provides a complete on-line vehicle shopping experience - from model selection, to price quotes, to pre-approved financing - without ever leaving your home or office. Visit Buyer Connection at www.buyerconnection.com

Ford Graduate Program - Up to \$1,000 Off!

If you've graduated recently from a recognized university or college, you may be eligible for a rebate of up to \$1,000 on the new Ford of Canada vehicle of your choice. Get all the details from your local Ford of Canada Dealer, by calling our toll-free hotline at 1-800-387-5535, or visiting our web site at www.ford.ca



The Ford Community Commitment

*Ford of Canada
Proudly Supports The*

CANADIAN BREAST CANCER FOUNDATION
CIBC RUN
for the CURE

**Let's All Go The
Distance For The Cure!**



Organized by THE CANADIAN
BREAST CANCER FOUNDATION
for breast cancer research,
education, diagnosis
and treatment

For more information call
1-800-387-9816

SMARTRISK



SAUVE-QUI-PENSE

Ford of Canada and SMARTRISK have partnered to help youth see the risks in their everyday lives through the Heroes Program. This program is designed to show them how to take those risks in the smartest way possible so that they enjoy life to the fullest. It's your choice to Buckle Up, Drive Sober, Look First, Wear the Gear, and Get Trained. For more information please see www.smartrisk.ca

With over 160 classroom locations nationwide, Young Drivers is Canada's only national driver training organization. Young Drivers provides driver training for new drivers and Collisionfree driver improvement programs for licensed drivers to over 40,000 Canadians annually. See your local Ford Dealer for the nearest Young Drivers location.



YOUNG DRIVERS
Your licence to survive.
www.youngdrivers.com

Ford & The Environment

Ford of Canada is dedicated to sound environmental practices and is an industry leader in supporting a cleaner environment.

- Ford is continuing to develop alternative fuel and electric-power vehicles. In fact, Ford offers more alternatives in alternative fuel vehicles than any other automaker.
- Ford Motor Company has made a major investment in Canada's Ballard Power Systems and their revolutionary new hydrogen fuel cell.
- This catalogue is printed on recycled paper which contains 10% de-inked post-consumer materials and uses vegetable inks.

At Ford, we believe that by investing in these types of environmental programs and technologies we are investing in a cleaner environment for our country and for those who will inherit it.

