

zoom-zoom

Get more detailed information on your Protégé. Check out our website at www.mazda.ca for specifications and features, option packages, pricing, financing and to find a dealer near you.



Mazda Canada Inc., Suite 400, 305 Milner Avenue, Scarborough, Ontario M1B 3V4
Printed in Canada. Part No. 9999-92-PR02-EN



mazda
www.mazda.ca

ZOOM-ZOOM

2002 MAZDA
PROTEGÉ



mazda

www.mazda.ca

2002 MAZDA PROTEGÉ



ZOOM-ZOOM

GETTING THERE
SHOULD BE MORE THAN
HALF THE FUN.



You're out the door and into your Mazda Protegé. Where to? Doesn't matter. Because while not all destinations are created equal in a Mazda Protegé, all drives are pure exuberance.



REMEMBER HOW IT FELT TO JUMP FROM A SWING?

Bottom line, it really feels great to drive this car. In fact, you may find yourself doing a few things you wouldn't ordinarily do while driving. Like opening the windows in any weather, just to add to the rush. Changing lanes just because, with 130-hp, it's fun. Inviting your friends along even when you really don't have anywhere to go. (Trust us, you pick the right roads and they won't mind a bit.) Turning. Even stopping. Mazda Protegé brings back the thrill of letting go and flying. Only, without the hard landing at the end.





Protegé

RVP250

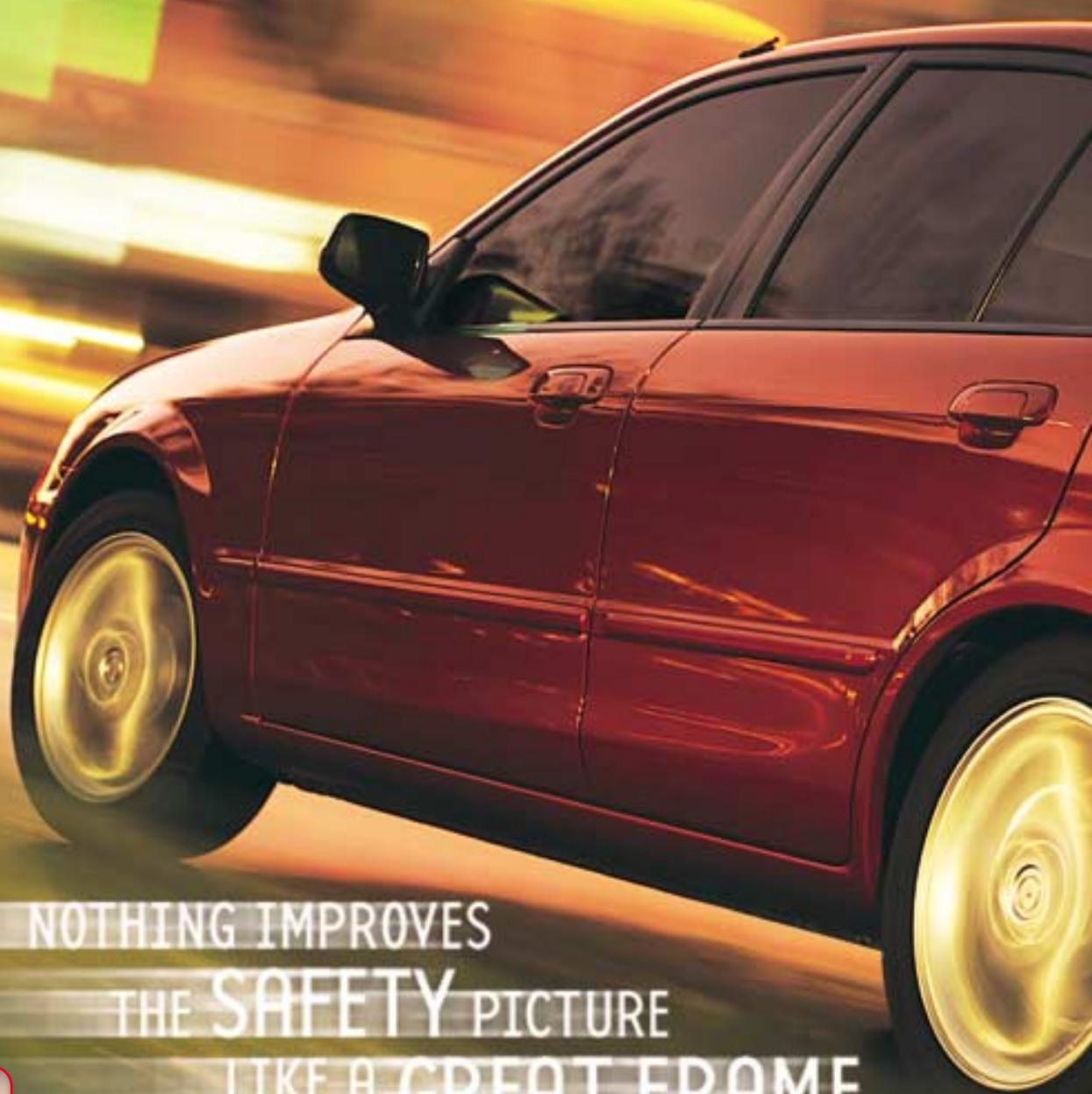
Mazda

SHORTCUT?
NO THANKS.

You've still got three more CDs to play, most of a tank of gas, your best friends all together and the road stretching out in front of you. And you're in a Mazda Protegé ES with GT Package, sunlight streaming in through the power moonroof. Everyone's nice and comfortable, backseat people included. The way the seat fits you and the controls fall so readily to hand, you feel as if the car's designer somehow knew you personally. When it comes to shortcuts, our engineers sure didn't take any. You won't want to either.







NOTHING IMPROVES
THE SAFETY PICTURE
LIKE A GREAT FRAME.



If you could take a look beneath the stylish skin of the Mazda Protegé, you'd see exactly why it feels so solid and stable on the road. You'd see a computer-designed structure with "crumple zones" front and rear, to direct impact forces away from the cabin. "Triple H" construction that adds steel reinforcement at key points to help create a "safety cage". Driver and front passenger air bags*. Available ABS. You'd see that we make your safety our number-one priority. So you can relax behind the wheel.



*Always wear your safety belt and secure children in the rear seat.



Protegé



MAZDA

GOY 298

2002 MAZDA PROTEGÉ

ACCESSORIES



From top to bottom: Rear spoiler, moonroof wind deflector and cargo net.

- Cassette deck
- In-dash 6 disc CD player
- Security system
- Cargo net
- Mud guards (front and rear)
- Front mask
- Moonroof wind deflector
- Rear spoiler
- Wheel locks
- Engine block heater
- Electrochromatic mirror w/ compass
- Electrochromatic mirror w/ compass & temperature



Mazda notes that all Genuine Mazda Accessories, if installed by your Mazda Dealer prior to or at an initial vehicle retail delivery, carry the same new-vehicle warranty as the Protegé.

COLOUR COMBINATIONS

EXTERIOR COLOUR	INTERIOR COLOURS	
	SE/LX	ES
Pure White	Grey	Sport Black
Millennium Red Mica	Grey	Sport Black
Seabreeze Green Mica	Beige	Sport Black
Light Sandalwood Metallic	Beige	Sport Black
Sand Mica	Beige	Sport Black
Black Mica	Grey	Sport Black
Emerald Mica	Beige	Sport Black
Sunlight Silver Metallic	Grey	Sport Black

AVAILABLE PACKAGES

CONVENIENCE PACKAGE:

Air conditioning, power windows, power adjustable body-colour mirrors, cruise control.

SUN SPORT PACKAGE:

Moonroof, ABS, body-colour rear spoiler.

GT PACKAGE:

16" alloy wheels, 195/50R16 all-season steel-belted radial tires, rear disc brakes, moonroof, body-colour rear spoiler, air conditioning.

MAZDA WARRANTY

The basic warranty on the Mazda Protegé covers all parts found to be factory defective for 3 years or 80,000 km whichever comes first. Additional warranties cover powertrain components for a period of 5 years or 100,000 km whichever comes first, body sheet metal perforation for 5 years and unlimited mileage and specific emission control components for up to 8 years or 128,000 km. Exclusions from coverage are limited to maintenance items or adjustments (repairs not requiring parts replacement) on vehicles over 12 months old and repairs due to normal wear and tear. Ask your Mazda Dealer for additional information.

ROADSIDE ASSISTANCE PROGRAM

As part of our commitment to your total satisfaction, 2002 Protegé owners are automatically enrolled in our Roadside Assistance Program. Roadside Assistance protects your Protegé for the duration of the 3-year basic limited warranty. Should you require assistance during this period, our service will help to get your vehicle back on the road and minimize any inconvenience. For complete details on this program, see your Mazda Dealer.



For peace of mind motoring, we've created the Mazda Added Protection Plan (MAP). MAP complements your Mazda Limited Warranty for up to 7 years or 160,000 km, and protects you from unexpected repair expenses and the rising cost of repairs. All MAP plans include Personal Budget and Repair Inflation Protection. In addition, all MAP plans include Premium Roadside Assistance, which extends the roadside assistance coverage offered during the new vehicle limited warranty period throughout the MAP term. The Premium Roadside Assistance offers Towing, Battery Boost, Out-of-Fuel Coverage, Tire Service, Lockout Service, Emergency Travel Expense Reimbursement and Travel Planning. Should you ever decide to sell your Mazda vehicle, MAP is transferable to future owners and will enhance the resale value of your vehicle. The Mazda Added Protection Plan is fully backed and administered by Mazda Canada Inc. For more information, please contact your Mazda Dealer.

Product changes and options availability: Following publication of this brochure, certain changes in standard equipment, options, prices and the like, or product delays may have occurred which would not be included in these pages. Your Mazda Dealer is your best source for up-to-date information. Mazda reserves the right to change product specifications at any time without incurring obligations. Options and accessories shown or described in this brochure are available at extra cost and may be offered only in combination with other options or subject to additional ordering requirements or limitations. E. & O. E.



Sand Mica



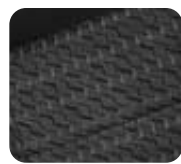
Pure White



Seabreeze Green Mica



Millennium Red Mica



Sport Black Cloth



Elegant Beige Cloth



Elegant Grey Cloth



Light Sandalwood Metallic



Sunlight Silver Metallic



Emerald Mica



Black Mica



Casual Beige Cloth



Casual Grey Cloth

2002 PROTEGÉ SPECIFICATIONS

ENGINE	SE	LX/ES
Type	1.6L Inline 4-cylinder	2.0L Inline 4-cylinder
Valve gear	DOHC 16-valve	DOHC 16-valve
Displacement	1,597 cc	1,991 cc
Bore and stroke	78mm x 83.6mm	83mm x 92mm
Compression ratio	9.0:1	9.1:1
Horsepower SAE net	103 @ 5,500 rpm	130 @ 6,000 rpm
Torque, SAE net lb. ft.	106 @ 4,000 rpm	135 @ 4,000 rpm
Fuel system	Electronic Fuel Injection (EFI)	Electronic Fuel Injection (EFI)
Recommended fuel	Regular (unleaded)	Regular (unleaded)
DRIVETRAIN		
Type	Transverse front engine/front-wheel drive	
Clutch type	Single dry plate with diaphragm spring	
Transmission	5-speed manual with overdrive Optional: 4-speed electronically controlled automatic with overdrive and lock-up torque converter	
	SE	LX/ES
Transmission	5MT	4EAT
Gear ratios: 1st	3.416	2.816
2nd	1.842	1.497
3rd	1.290	1.000
4th	0.972	0.725
5th	0.775	0.755
Reverse	3.214	2.648
Final drive	3.850	3.904

ELECTRICAL SYSTEM

Type	12 Volt
Battery	Maintenance free 60 amp/hr.
Alternator	70 amp/hr (1.6L), 80 amp/hr. (2.0L)
Starter	0.85kW (1.6L MT), 1.0kW (1.6L AT & 2.0L)
Ignition system	Breakerless electronic
CHASSIS	
Frame	Unit body (Monocoque) with side door impact protection beams and "Triple H" construction
Front suspension	Independent, strut type, coil springs, stabilizer bar
Rear suspension	Independent, strut type with Twin Trapezoidal Links (TTL), coil springs and stabilizer bar
Shock-absorber	Telescopic-type, double acting
Steering	Rack-and-pinion with engine-speed-sensitive variable power-assist
Steering ratio	15.0 : 1
Steering wheel turns	2.7 (lock-to-lock)
Min. turning circle	10.4m (curb-to-curb)
Brakes	Power-assisted ventilated front disc/rear drum brakes; optional Anti-lock Brake System w/ EBF (Electronic Brake Force Distribution system)
Wheels	14" styled steel wheels w/ full wheel covers (SE) 15" styled steel wheels w/ full wheel covers (LX & ES) 16" alloy wheels (GT Package)
Tires	185/65R14 all-season steel belted radials (SE) 195/55R15 all-season steel belted radials (LX & ES) 195/50R16 all-season steel belted radials (GT Package)
Curb weight	1,131kg (1.6L MT), 1,194kg (2.0L MT),

CAPACITIES

Seating	5 persons	Washer fluid tank	5.1L
Fuel tank	50L (SE), 55L (LX,ES)	Crankcase	3.4L (SE); 3.7L (LX,ES)
Coolant	6.0L (SE); 7.5L (LX,ES)		

EXTERNAL DIMENSIONS (MM)

Wheelbase	2,610	Track (fr/fr)	1,470/1,470
Overall length	4,420	Overall width	1,705
Overall height	1,410	Ground clearance	140

INTERNAL DIMENSIONS (MM)

Headroom (fr/fr)	998/949
Legroom (fr/fr)	1,073/900
Shoulder Room (fr/fr)	1,370/1,356
EPA passenger volume	2622.1L (92.6 cu.ft.)
EPA trunk room capacity	365.3L (12.9 cu.ft.)
Total interior volume	2987.4L (105.5 cu.ft.)

TRANSPORT CANADA FUEL ECONOMY RATINGS

Transmission	1.6L		2.0L	
	5MT	4EAT	5MT	4EAT
City	8.5L/100km	9.3L/100km	9.6L/100km	9.9L/100km
Highway	6.7L/100km	6.9L/100km	7.3L/100km	7.4L/100km

ESTIMATED PERFORMANCE DATA

	SE		LX/ES	
	SE	LX/ES	SE	LX/ES
Acceleration (0 – 100km/h; sec)	MT: 11.4/AT: 13.3	MT: 10.4/AT: 11.9		
Top speed (km/h)	MT: 178/AT: 165	MT: 195/AT: 176		
Acceleration (1/4 mile; sec)	MT: 18.2/AT: 19.1	MT: 17.4/AT: 18.2		
Weight distribution (% fr/fr)	60:40			
Coefficient of drag (Cd)	0.32			
Bumpers, fr/r crash test	5 mph/8 km/h			

2002 PROTEGÉ FEATURES

ENGINEERING FEATURES

	SE	LX	ES
1.6L DOHC 16-valve 4-cylinder engine; Fuel tank (50L)	S	–	–
2.0L DOHC 16-valve 4-cylinder engine; Fuel tank (55L)	–	S	S
Transmission 5 MT	S	S	S
Transmission 4 EAT	O	O	O
Power-assisted ventilated front disc/rear drum brakes	S	S	S
Rear disc brakes	–	–	GT
Anti-lock Brake System (ABS) w/ EBF (Electronic Brake Force Distribution system)	–	O/SP	S
Front wheel drive; Rack-and-pinion steering with variable power-assist	S	S	S
Front stabilizer bar; Rear stabilizer bar	S	S	S
Side door impact protection beams; Front washer fluid tank (5.1L)	S	S	S
Temporary spare tire; Hood insulator	S	S	S

EXTERIOR FEATURES

14" styled steel wheels with full wheel covers	S	–	–
185/65R14 all-season steel-belted radial tires	S	–	–
15" styled steel wheels with full wheel covers	–	S	S
195/55R15 all-season steel-belted radial tires	–	S	S
16" alloy wheels; 195/50R16 all-season steel-belted radial tires	–	–	GT
Front mud guards – black	A	A	S
Headlamp inner vessel (metal coat) with radiator grille treatment	–	–	S
Colour keyed bumpers	S	S	S
Outer door handle – black; Protective body-side mouldings – black	S	–	–
Outer door handle – body-colour; Protective body-side mouldings – body-colour	–	S	S
Body-colour rear spoiler	A	A/SP	A/GT
Dual manual remote-control folding door mirrors w/ integrated rain gutters – black	S	S	–
Dual power operated folding door mirrors with integrated rain gutters – colour	–	CP	S
Fixed intermittent windshield wipers; Rear window defroster	S	S	S
Single exhaust outlet w/ garnish; Fog lamps	–	–	S
Flush mounted halogen headlights w/ daytime running lights	S	S	S
Tinted glass (green pen glass for all windows)	S	S	S

INTERIOR FEATURES: COMFORT AND CONVENIENCE

AM/FM ETR CD player w/ 4 speakers and clock; Module audio	S	S	S
Air conditioning	O	O/CP	O/GT
Cruise control	–	CP	S
Tilt steering; Remote fuel door and hood release	S	S	S
Remote trunk release; Internal trunk release; Slam locks	S	S	S
L/R front door central locking; Keyless entry (2 key fobs)	–	S	S
Power door locks w/ 2 action unlock feature (driver side)	–	S	S

INTERIOR FEATURES: COMFORT AND CONVENIENCE (cont'd)

	SE	LX	ES
Power windows w/ driver's one-touch down feature	–	CP	S
Power window switch illumination	–	CP	S
Mechanical dial type HVAC controls; Rear heater ducts; Trunk/cargo light	S	S	S
Covered passenger vanity mirror; Covered driver vanity mirror w/ ticket holder	S	S	S
Passenger assist grips (three); Front ashtray and cigarette lighter	S	S	S
Coat hook; Driver-side footrest	S	S	S
Day/night rearview mirror; Dual front cupholders	S	S	S
Power glass moonroof w/ dual front seat map lamps	–	SP	GT
Map lamps (non-moonroof models)	S	S	S

INTERIOR FEATURES: SAFETY AND SECURITY

Driver and front passenger depowered air bags (SRS)	S	S	S
Adjustable front safety belt anchors; Integrated child seat anchor brackets	S	S	S
3-point rear safety belts; Child-proof door locks	S	S	S
Driver and front passenger safety belt pretensioners and load limiters	S	S	S

INTERIOR FEATURES: SEATING AND TRIM

Casual type cloth seats	S	–	–
Elegant type cloth seats	–	S	–
Sport type cloth seats; Adjustable driver's seat lifter	–	–	S
Reclining front bucket seats w/ adjustable head restraints	S	S	S
Centre console box w/ lid; Integrated rear seat headrests	S	S	S
60/40 split fold-down rear seatback w/ lock function	S	S	S
Chrome inner door handles, parking brake and shift knob release buttons	S	S	–
Silver finish on inner door handle and power window switch	–	–	S
Carbon-like centre panel treatment	–	–	S
Moulded cloth door trim and headliner	S	S	S
Floor mats; Unwoven cloth interior carpeting	S	S	S

INTERIOR FEATURES: STORAGE

Front door storage pockets; Glove compartment (lockable)	S	S	S
--	---	---	---

INTERIOR FEATURES: INSTRUMENT PANEL

Resettable trip odometer; Headlamps on warning chime; Ignition key illumination	S	S	S
White meter set	–	–	S
Tachometer; Engine coolant temperature gauge	S	S	S
Warning lights for oil pressure, check engine, parking brake and battery charge	S	S	S
Warning lights for low washer fluid and low fuel level	S	S	S
Warning lights for door ajar, high-beam, defrost on, and O/D off (AT only)	S	S	S
Warning lights for air bags	S	S	S

S = Standard O = Optional A = Accessory CP = Convenience Package SP = Sun Sport Package GT = GT Package – = Not available