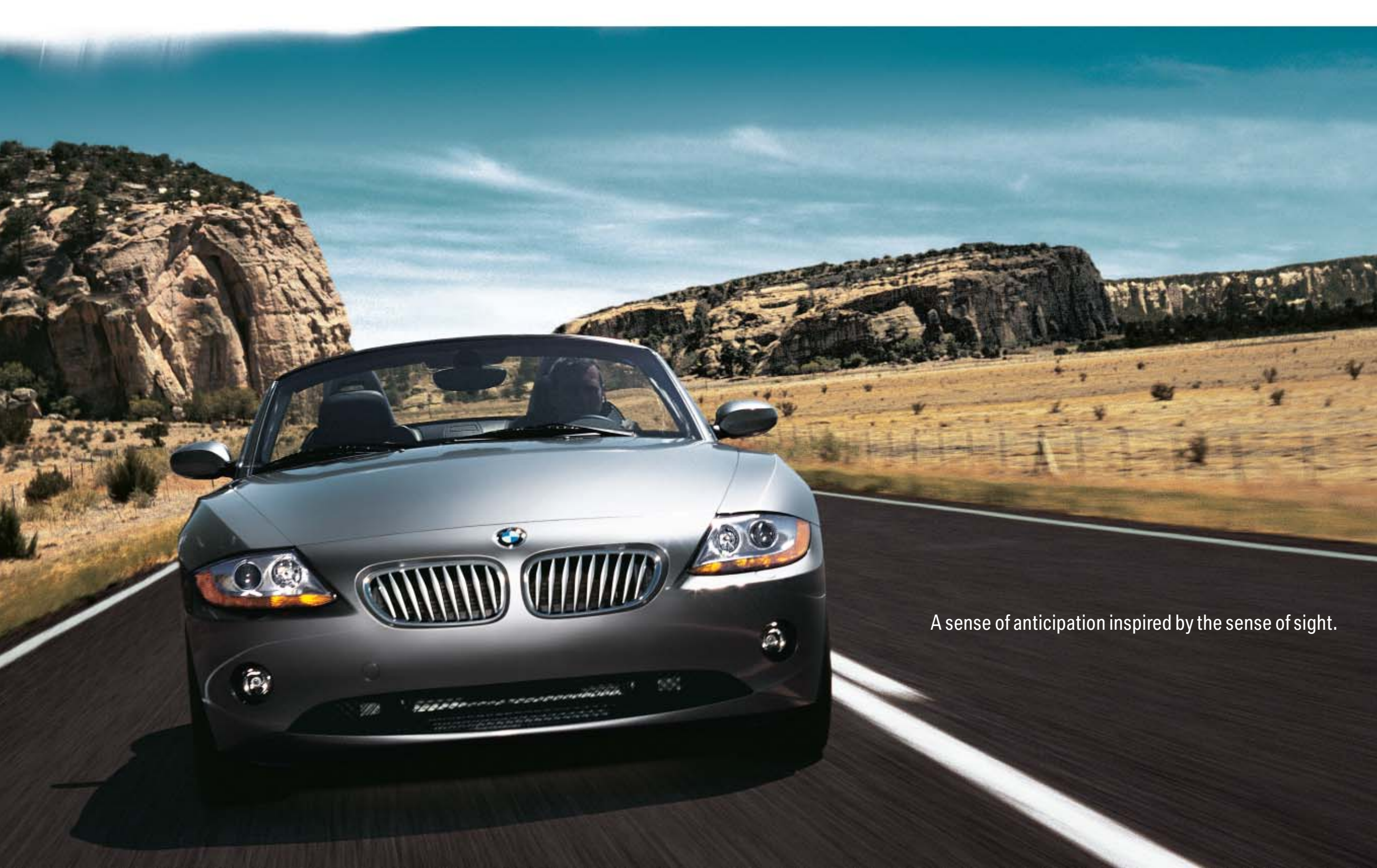


The
BMW Z4 roadster





A sense of anticipation inspired by the sense of sight.



Once experienced, never forgotten.







■ **Bi-xenon headlights** with dynamic headlight range control ensure better illumination of the road ahead and to the side, in bad weather or in poor visibility. Xenon headlights with ellipsoid technology offer a very high standard of light intensity and a very smooth and consistent spread of light on the road.



■ **Indicator light in front side panel**; integrated into the BMW roundel.



■ **Manual softtop operation**; central lock for single-handed operation. (Standard on Z4 2.5i.)
 Fully automatic softtop operation; at the touch of a button the softtop opens/closes in less than ten seconds. (Standard on Z4 3.0i.)



■ **Glass rear window, heated**; scratch-proof rear window ensures optimal vision to the rear at all times.



■ **Sport seats** for the driver and front passenger are designed to offer optimum lateral support in every driving situation. This is provided by highly-contoured seat bolsters and a wide range of settings, including individual adjustment for seat height and seat angle.



Ellipsoid alloy wheels, style 107, 8 J x 18" with 225/40R-18 and 255/35R-18 rear, performance run-flat tires.



■ **Sport leather steering wheel** with an ergonomical design that makes it fit especially well in the driver's hands.



■ **Six-speed manual transmission**; makes for extremely dynamic driving. Smooth and optimally synchronized, it boasts precise, short shift throws. Thanks to the more tightly graded transmission and an additional sixth gear, the engine is even more responsive to your personal style of driving. (Standard on Z4 3.0i.)



Auto-dimming mirrors increase your driving safety and comfort at night. Depending on the dazzle intensity, the interior and exterior mirrors dim accordingly in order to minimize glare. When dazzling has ceased the mirrors return to the original degree of reflection.



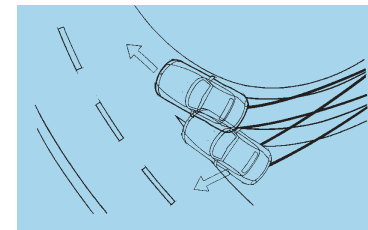
Seat heating for the driver and front passenger is a welcome feature in cooler weather. With the touch of a button, you can individually select from three heat settings. (Standard on Z4 3.0i.)



■ **BMW Business CD** offers an AM/FM radio with easy-to-use preset buttons. Listen to your favourite radio stations or insert a CD into the single CD player.



HiFi Professional Sound System, with a digital ten-channel sound processor, 430-watt amplifier, seven-band equalizer, eight speakers and two sub-woofers, provides an excellent sound. New Carver technology produces an especially brilliant bass playback at low volumes.



■ **Dynamic Stability Control (DSC III)** including Dynamic Traction Control (DTC). DSC III is a suspension control system that stabilizes the car in milliseconds when it foresees an imminent skid. Dynamic Traction Control allows an increased wheel slip up to a pre-determined limit and is activated by a light touch of the DSC switch; its activity is indicated by a symbol on the instrument panel.

Safety	Z4 2.5i	Z4 3.0i
Airbags:		
– Driver and front passenger ID airbags; seat occupation detector for front passenger airbag	■	■
– Knee airbags for driver and passenger	■	■
– SMART airbag deployment system	■	■
– Side airbags at the front for driver and front passenger	■	■
Alarm system with remote control	□	□
Anti-lock Braking System (ABS)	■	■
Auto-dimming interior rear view and exterior mirrors	□	□
Auxiliary indicator light in the front side panel, with integrated BMW roundel	■	■
Battery Safety Terminal (BST)	■	■
Bi-xenon headlights incl. dynamic headlight range control	■	■
Brake force display	■	■
Brake light, third	■	■
Brakes:		
– disc brakes, front, inner-vented	■	■
– disc brakes, rear inner-vented (Z4 2.5i solid disc)	■	■
Bumpers with aluminum impact absorbers front and rear, fully regenerating from impacts of up to 4 km/h; deformation units at the front absorb impacts up to 15 km/h	■	■
Crash sensor (inc. fuel cutoff, lights on, door unlock)	■	■
Central locking locks doors, trunk lid, fuel filler cap, storage compartment at the back between the seats	■	■
Dynamic Brake Control (DBC)	■	■
Dynamic Stability Control (DSC III) incl. Dynamic Traction Control (DTC)	■	■
Electronic brake force distribution (EBD)	■	■
Emergency trunk lock release	■	■
Foglights	■	■
Headlight washer system	□	□
Rollover safety system	■	■
Run-flat tires with Tire Pressure Warning (TPW)	■	■
Safety belt, automatic with pyrotechnic belt latch tensioner	■	■
Side impact protection system, integrated	■	■
Engine	Z4 2.5i	Z4 3.0i
2.5-litre, 184 hp dual overhead cam (DOHC), 24-valve in-line six-cylinder engine	■	–
3.0-litre, 225 hp dual overhead cam (DOHC), 24-valve in-line six-cylinder engine	–	■
Alloy cylinder head	■	■
Alloy engine	■	■
Digital Engine Electronics (DEE)	■	■
Double-VANOS (steplessly variable valve timing)	■	■
Electronically controlled engine cooling	■	■
Fully electronic “drive-by-wire” throttle system	■	■

Engine (continued)	Z4 2.5i	Z4 3.0i
Ignition distribution, static	■	■
On-board diagnosis	■	■
Selective cylinder knock control	■	■
Three-way catalytic converter, heated lambda sensors, activated carbon filter, controlled tank purge	■	■
Twin exhaust pipe	■	■
Valve clearance compensation, hydraulic	■	■
Transmission/Suspension	Z4 2.5i	Z4 3.0i
5-speed manual transmission	■	–
6-speed manual transmission	–	■
5-speed STEPTRONIC automatic transmission with Adaptive Transmission Management (ATM)	□	□
Anti-roll bar, front and rear	■	■
Central arm rear axle	■	■
Dynamic Driving Control with sport mode	□	□
Electrical power steering	■	■
Servotronic	■	■
Single-joint spring strut front axle	■	■
Interior features	Z4 2.5i	Z4 3.0i
Air conditioning, manual with microfilter	■	■
Automatic air conditioning with microfilter	–	□
Central softtop locking, integrated in the front centre of the softtop	■	■
Courtesy light front centre with delay function	■	■
Cruise Control	■	■
Cupholders	■	■
Electric window lifts, central switch incl. one-touch open/close function (fingertip control) for driver (for passenger, one-touch open function only)	■	■
Floor mats in velour	■	■
Gear lever and handbrake lever cover, leather	■	■
Glove compartment, lockable	■	■
Hand brake handle, leather	■	■
Heat-insulation glass, green, front and side windows	■	■
Interior trim:		
– Brushed Aluminum	□	■
– Sycamore wood, high-gloss	□	□
– Graphite	■	–
Luggage compartment, load capacity 240 to 260 litres	■	■
On-board computer	■	■
Radio/Audio:		
– 6-disc CD changer	□	□
– BMW Business CD	■	■
– HiFi loudspeaker system	■	■
– HiFi Professional sound system with Digital Sound Processing (DSP)	□	□
Rain sensor with automatic headlights	□	□
Remote control for central locking	■	■

Interior features	Z4 2.5i	Z4 3.0i
Seats:		
– Seat heating for driver and front passenger	<input type="checkbox"/>	<input checked="" type="checkbox"/>
– Electric seat-adjustment, with memory function for driver's seat	<input type="checkbox"/>	<input checked="" type="checkbox"/>
– Sport seats for driver and front passenger	<input checked="" type="checkbox"/>	<input checked="" type="checkbox"/>
Sport steering wheel, leather	<input checked="" type="checkbox"/>	<input checked="" type="checkbox"/>
Steering wheel column, manually adjustable for reach and height	<input checked="" type="checkbox"/>	<input checked="" type="checkbox"/>
Storage compartment between the seats (ca. 8 l) can be locked via central locking system; storage compartment behind the seats (partially decreased space if CD changer, Navigation System or HiFi system is installed)	<input checked="" type="checkbox"/>	<input checked="" type="checkbox"/>
Sun visors, with vanity mirror with slide covers, for driver and front passenger	<input checked="" type="checkbox"/>	<input checked="" type="checkbox"/>
Tool kit (integrated into the battery well)	<input checked="" type="checkbox"/>	<input checked="" type="checkbox"/>
Trunk light	<input checked="" type="checkbox"/>	<input checked="" type="checkbox"/>
Upholstery:		
– Leatherette	<input checked="" type="checkbox"/>	<input type="checkbox"/>
– Oregon Leather	<input type="checkbox"/>	<input checked="" type="checkbox"/>
Variable softtop storage box	<input checked="" type="checkbox"/>	<input checked="" type="checkbox"/>
Exterior features	Z4 2.5i	Z4 3.0i
Electric trunk lock release, via switch in the interior or remote control in the car key	<input checked="" type="checkbox"/>	<input checked="" type="checkbox"/>
Exterior door handles in body colour	<input checked="" type="checkbox"/>	<input checked="" type="checkbox"/>
Glass rear window, heated	<input checked="" type="checkbox"/>	<input checked="" type="checkbox"/>
Hardtop	<input type="checkbox"/>	<input type="checkbox"/>
Hardtop mount	<input checked="" type="checkbox"/>	<input checked="" type="checkbox"/>
Headlight surrounds, black	<input checked="" type="checkbox"/>	<input type="checkbox"/>
Headlight surrounds, chromium matte	<input type="checkbox"/>	<input checked="" type="checkbox"/>
Metallic paint	<input checked="" type="checkbox"/>	<input checked="" type="checkbox"/>
Kidney grille with chrome surround and black kidney slats	<input checked="" type="checkbox"/>	<input type="checkbox"/>
Kidney grille with chrome surround and matte graphite kidney slats	<input type="checkbox"/>	<input checked="" type="checkbox"/>
Power folding mirrors	<input type="checkbox"/>	<input type="checkbox"/>
Side mirrors in body color, electrically adjustable, aspheric	<input checked="" type="checkbox"/>	<input checked="" type="checkbox"/>
Softtop¹:		
– Dark beige	<input type="checkbox"/>	<input type="checkbox"/>
– Grey	<input type="checkbox"/>	<input type="checkbox"/>
– Black	<input checked="" type="checkbox"/>	<input checked="" type="checkbox"/>
Softtop operation:		
– Manual single-hand operation	<input checked="" type="checkbox"/>	<input type="checkbox"/>
– Fully automatic	<input type="checkbox"/>	<input checked="" type="checkbox"/>
Wheels:		
– 16 x 7.0 Cross spoke alloy wheels, style 104, 225/50R-16 all-season run-flat tires	<input checked="" type="checkbox"/>	<input type="checkbox"/>
– 17 x 7.0 Double spoke alloy wheels, style 103, 225/45R-17 all-season run-flat tires	<input type="checkbox"/>	<input checked="" type="checkbox"/>
– 17 x 8.0 Turbine alloy wheels, style 106, 225/45R-17 performance run-flat tires	<input type="checkbox"/>	<input type="checkbox"/>
– 18 x 8.0 Ellipsoid alloy wheels, style 107, with 225/40R-18 front and 255/35R-18 rear performance run-flat tires	<input type="checkbox"/>	<input type="checkbox"/>
Wind deflector	<input type="checkbox"/>	<input type="checkbox"/>
Windshield with green stripe	<input checked="" type="checkbox"/>	<input checked="" type="checkbox"/>
Windshield washer nozzles, heated, incl. heated exterior mirrors	<input checked="" type="checkbox"/>	<input checked="" type="checkbox"/>

Premium Package	Z4 2.5i	Z4 3.0i
Electric seats with driver memory; Heated seats; HiFi sound system with DSP	<input type="checkbox"/>	<input type="checkbox"/>
Auto-dimming interior rear view mirror and exterior mirrors; Automatic climate control; Electric seats with driver memory; HiFi sound system with DSP; Power folding mirrors	<input type="checkbox"/>	<input type="checkbox"/>
Sport Package		
17 x 8.0 Turbine alloy wheels, style 106, 225/45R-17 performance run-flat tires; Dynamic Driving Control	<input type="checkbox"/>	<input type="checkbox"/>
18 x 8.0 Ellipsoid alloy wheels, style 107, 225/40R-18 front and 255/35R-18 rear, performance run-flat tires; Dynamic Driving Control	<input type="checkbox"/>	<input type="checkbox"/>
Navigation Package		
BMW On-board Navigation System; Canada Map CD	<input type="checkbox"/>	<input type="checkbox"/>

Weight¹		Z4 2.5i	Z4 3.0i
Curb weight	kg	1330 [1360]	1360 [1380]
Weight distribution, front/rear			
Manual transmission	%	50.2/49.8	50.4/49.6
Automatic transmission	%	50.5/49.5	50.7/49.3
Max. permissible weight	kg	1580 [1610]	1610 [1630]
Payload	kg	250	250
Permitted axle load, front/rear	kg	780/835	790/845
Engine			
		Z4 2.5i	Z4 3.0i
Litre/type		2.5/in-line 6	3.0/in-line 6
Displacement	cm ³	2494	2979
Bore/stroke	mm	84.0/75.0	84.0/89.6
Max. output	hp/rpm	184/6000	225/5900
Max. torque	lb-ft/rpm	175/3500	214/3500
Compression ratio	:1	10.5	10.2
Transmission			
		Z4 2.5i	Z4 3.0i
Drive configuration		Rear	Rear
Transmission type		5-M/5-A	6-M/5-A
Standard transmission ratio			
	I/II:1	4.23/2.52 [3.67/2.00]	4.35/2.50 [3.67/2.00]
	III/IV:1	1.66/1.22 [1.41/1.00]	1.66/1.24 [1.41/1.00]
	V/VI/R:1	1.00/-/4.04 [0.74/-/4.10]	1.00/0.85/3.93 [0.74/-/4.10]
Final drive ratio	:1	3.46[3.64]	3.07[3.46]
Brakes			
		Z4 2.5i	Z4 3.0i
Braking system		4-channel ABS	4-channel ABS
Brake type, front/rear		ventilated/solid disc	ventilated/ventilated disc
Brake diameter, front/rear		286/280	300/294
Performance			
		Z4 2.5i	Z4 3.0i
Drag coefficient	C _d	0.35	0.35
Top speed ²	km/h	235 [227]	250 [244]
Acceleration 0 – 100 km/h	sec	7.6 [7.7]	6.3 [6.4]

Wheels	Z4 2.5i	Z4 3.0i	
Tire size	225/50 R 16	225/45 R 17	
Wheel size	7 J x 16	8 J x 17	
Material	Light alloy	Light alloy	
Consumption³			
		Z4 2.5i	Z4 3.0i
City	ltr/100 km	TBA	TBA
Highway	ltr/100 km	TBA	TBA
Tank capacity, approx.	ltr	55	55
Fuel grade		Premium unleaded	Premium unleaded

All dimensions in the technical drawings are given in millimetres. Luggage capacity up to 260 litre.

Figures in [] apply to vehicles with automatic transmission.

¹ Figures are based on a 90% fill-up, driver's weight of 68 kg and 7 kg of luggage. Curb weight applies to vehicles with standard equipment. Optional extras may increase these figures.

² Electronically limited.

³ NR-Can-estimated figures are for comparison purposes only. Your actual mileage will vary depending on speed, driving habits, trip length and driving conditions; actual mileage will most likely be lower.