

BMW 3 Series  
Coupe

325Ci  
330Ci



The Ultimate  
Driving Experience.™



Achieving perfection  
means constantly questioning it.





One look at this car's body is  
enough to reveal its soul.





Enjoy every inch. Mile after mile...







Good design is not an art. It's a passion.



■ **Xenon headlights (high and low beam)** illuminate the road ahead and to the side with brilliant clarity. These headlights also feature auto-levelling, to adjust for varying passenger and cargo loads.



■ **Front bullet foglights** are cleanly integrated into the front bumper, illuminating the road ahead in poor weather.



■ **Multi-function leather sport steering wheel** offers highly convenient operation, increased safety and an ergonomic design that makes it fit especially well in the driver's hands.



■ **Automatic Climate Control system** includes Automatic Air Recirculation (AAR), which is activated when a sensor detects certain pollutants in the outside air. Inside, cabin air continuously passes through a microfilter that removes pollen, dust and spores.



■ **Six-speed manual transmission** makes for extremely dynamic driving. Smooth and optimally synchronized, it boasts precise, short shift throws. The more tightly graded transmission and additional sixth gear make the engine even more responsible to your personal style of driving. (Available only on 330Ci.)



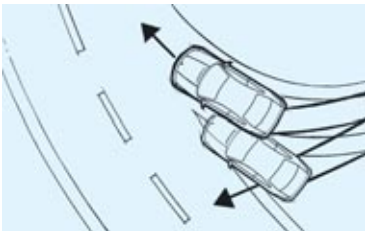
■ **Car memory** allows you to program a full range of individual settings and features on your car, including the Follow-Me-Home function. **Key memory** allows you to set your preferred seat position of the electrically adjustable driver's seat. Furthermore, it is possible to set the automatic climate control to the interior temperature and air distribution to a specific key.



■ **Driver and front passenger airbags** protect your head and upper body in a frontal collision from hitting the steering wheel or instrument panel; depending on the severity of the impact, the airbags are inflated via a two-stage gas generator (impact-depending system); the front passenger airbag comes complete with a seat occupancy detector.



■ **Head Protection System (HPS)** for the driver and front passenger provides effective protection of your head and upper body in a collision from the side.



■ **Dynamic Stability Control (DSC)** recognizes the risk of the car skidding very early and stabilizes the car within milliseconds. Also includes Dynamic Brake Control (DBC).



■ **Rain sensor** uses an infrared light to measure the amount of rain. When the wipers are in the "intermittent" mode, the rain sensor automatically adjusts the windshield wiping interval as needed. Includes automatic headlight function.



□ **Park Distance Control (PDC)** uses ultrasonic sensors in the rear bumper to help you judge the distance to other cars and unseen objects when parking. The beeping becomes faster as your bumper approaches the object, turning into a constant tone when the distance is less than 30 centimetres.



□ **Glass sunroof** allows natural light to enter the cabin. For convenience, it has a one-touch open and close feature with anti-trapping, as well as a tilt function for ventilating the inside of your car on hot summer days. (Standard on 330Ci.)



□ **On-board Navigation System** guides you conveniently and directly to your destination. In addition to providing driving instructions via voice, directional arrows or map display, the system will provide destination-specific information. Includes Canada/USA Navigation DVD.



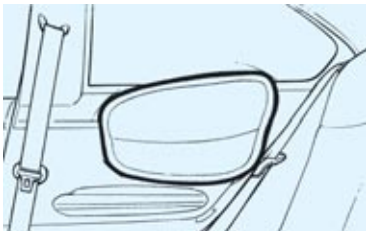
□ **Telephone and BMW Assist Preparation** makes the installation of a BMW car telephone system, available through BMW Accessories, as easy and convenient as possible. Also includes one year of BMW Assist Safety and Security Services. Please see Retailer for complete contents and details.



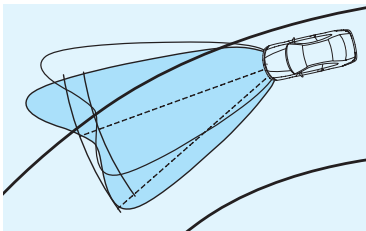
□ **Electric Seats with Driver Memory** enable the driver and passenger to precisely adjust their seats to individual preferences. The driver's mirror positioning is also retained in the seat memory.



□ **Harman/Kardon Sound System** projects exceptional sound from upgraded speakers and amplification, plus a subwoofer and vehicle-speed-sensitive equalization.



□ **Rear side airbags** protect your thorax in a side-on collision; the side airbag significantly reduces the risk of injury at pelvic and chest level.



□ **Adaptive Headlights** allow the xenon headlights to actively adjust themselves to bends in the road and also light up the road ahead, offering significant improvement to road illumination, especially at night.



Performance and Efficiency	325Ci	330Ci
2.5-litre, 184 hp dual overhead cam (DOHC), 24-valve in-line 6-cylinder engine	●	–
3.0-litre, 225 hp dual overhead cam (DOHC), 24-valve in-line 6-cylinder engine	–	●
5-speed manual transmission	●	–
6-speed manual transmission	–	●
5-speed STEPTRONIC 3 mode (automatic/sport automatic/clutchless manual) transmission with Adaptive Transmission Control (ATC)	○	○
6-speed SMG®1 (Sequential Manual Gearbox)	–	○
Double-VANOS steplessly variable valve timing	●	●
Dual resonance intake system	●	●
Handling, Ride and Braking		
4-wheel ventilated anti-lock disc brakes with electronic front/rear proportioning	●	●
Adaptive Headlights	○	○
Automatic Stability Control + Traction (ASC + T)	●	●
Dynamic Stability Control (DSC)	●	●
Engine-speed-sensitive, variable-assist power steering	●	●
Front and rear anti-roll (stabilizer) bars	●	●
Multi-link rear suspension with cast-aluminum upper transverse arms	●	●
Sport suspension calibration	●	●
Strut-type front suspension with forged-aluminum lower arms, hydraulic cushions	●	●
Twin-tube gas-pressure shock absorbers	●	●
Exterior		
Chrome and body-colour detail trim	●	●
Daytime running lights	●	●
Halogen free-form foglights	●	●
Heated windshield washer jets and dual-power mirrors	●	●
High-pressure headlight cleaning system	●	●
Metallic paint	○	○
<b>Tires</b>		
– 16 x 7.0 Parallel spoke alloy wheels, style 88, 205/55R-16 all-season tires	●	–
– 17 x 7.0 Parallel spoke alloy wheels, style 98, 205/50R-17 all-season tires	–	●
White indicator lenses	●	●
Xenon headlights with auto-levelling and high-beam function	●	●
Sound System		
Anti-theft AM/FM stereo sound system with 6 speakers, Radio Data System (RDS), Auto-Store and 3-channel FM diversity antenna system; pre-wired for CD changer	●	●
Harman/Kardon Sound System with 12 speakers (including 2 subwoofers), upgraded amplification and vehicle-speed-sensitive equalization	○	○
In-dash CD player	●	●

Interior Seating and Trim	325Ci	330Ci
3-spoke multi-function leather sport steering wheel with fingertip cruise control, audio and accessory phone controls	●	●
3-stage, thermostatically controlled heated front seats	○	●
6-way adjustable front seats	●	●
10-way adjustable front sport seats	○	○
Dual power front seats with 3-position driver's seat and exterior mirror memory (includes automatic tilt-down of passenger's side-view mirror when vehicle is shifted into reverse gear)	○	○
Front centre armrest with storage compartment	●	●
Front seatback storage nets	●	●
<b>Interior Trim</b>		
– Titanium	●	●
– Myrtle Wood	○	○
Lumbar support, 4-way adjustable	○	○
Matte Chrome-finish instrument rings	–	●
Split fold-down rear seats with centre armrest	●	●
<b>Upholstery</b>		
– Cloth Laser Anthracite/Alcantara Combination (only with M Sport package)	–	○
– Leatherette	●	●
– Montana Leather	○	○
– Exclusive Leather, extended	○	○
Comfort and Convenience		
2-way power glass sunroof with one-touch operation, sliding interior sunshade and wind deflector	○	●
Alarm and CD changer prewiring	●	●
Automatic Climate Control and Automatic Air Recirculation	●	●
Auto-dimming interior mirror	○	○
BMW Ambiance Lighting	●	●
Car/key memory	●	●
Dual power outside mirrors	●	●
Electric interior trunk release	●	●
Front/rear map-reading, footwell and visor-mirror lights	●	●
Fully finished trunk with drop-down tool kit	●	●
Keyless entry with multi-function remote control, including 2-step unlocking and remote trunk release	●	●
Locking glovebox with rechargeable take-out flashlight	●	●
Park Distance Control (PDC), rear	○	○
Power front windows with "one touch" up/down operation; power rear windows with "one touch" down	●	●

Comfort and Convenience	325Ci	330Ci
Rain sensor with automatic headlight function	●	●
Rear sunshade, electric	–	○
Ski bag	○	○
Tilt/telescopic steering wheel column	●	●
Instrumentation and Controls		
Check Control vehicle monitor system with pictogram	●	●
On-board computer, 4-function	●	●
Service Interval Indicator with kms-to-service read-out	●	●
Telephone prewiring	○	○
Telephone and BMW Assist Preparation, including one year of BMW Assist Safety and Security Services <sup>1</sup>	○	○
Safety and Security		
Anti-lock Braking System (ABS)	●	●
Automatic fuel cut-off, triggered by airbag deployment	●	●
Automatic-Locking Retractors (ALR) on all passenger safety belts (for installation of child restraint seats)	●	●
Battery Safety Terminal (BST)	●	●
Central locking system with centre console switch (leaves gas filler door unlocked), double-lock feature and 2-step unlocking	●	●
Coded Drive-away Protection	●	●
Crash sensor that automatically turns on hazard lights and interior lights and unlocks doors	●	●
Driver's and passenger's front airbag Supplemental Restraint System (SRS) with "smart" dual-threshold, dual-stage deployment and sensor to help prevent unnecessary passenger's airbag deployment	●	●
Front-door-mounted side-impact airbags	●	●
Full-use spare alloy wheel and tire	●	●
Head Protection System (HPS), front	●	●
Height-adjustable front safety belts with automatic tensioners and force limiters	●	●
Interlocking door anchoring system to help protect against door intrusion in side impacts	●	●
Rear side airbags	○	○

Premium Package	325Ci	330Ci
Electric seats with driver memory; Glass sunroof; Harman/Kardon Sound System; Heated front seats	○	–
Auto-dimming interior mirror; Electric seats with driver memory; Harman/Kardon Sound System; Lumbar support; Montana Leather; Ski bag	–	○
Sport Package		
Sport seats; 17 x 8.0 Star spoke alloy wheels, style 44, 225/45R-17 performance tires	○	–
Sport seats; 17 x 8.0 M Parallel alloy wheels, style 68M, 225/45R-17 performance tires	–	○
18 x 8.0 Double spoke bolted alloy wheels, style 71, 18 x 8.0 front, 225/45ZR-18; 18 x 8.5 rear, 255/35ZR-18 performance tires	–	○
M Sport Package <sup>1</sup>		
Anthracite roof liner; Black Aluminum Cube trim; High-gloss Shadow Line; M Aerodynamic package; M Double spoke alloy wheels, style 135M, 18 x 8.0 front, 225/45ZR-18; 18 x 8.5 rear, 255/35ZR-18 performance tires; M multi-function leather sport steering wheel; Sport seats; Sport suspension upgrade	–	○
Silver Aluminum Cube trim	–	○
Navigation Package <sup>1</sup>		
BMW On-board Navigation; Canada/USA Navigation DVD	○	○
Exclusive Edition		
Anthracite roof liner; Electric seats with driver memory; Exclusive Leather, extended; Glass sunroof; Heated front seats; Myrtle Wood Interior Trim	○	–
Anthracite roof liner; Auto-dimming interior mirror; Electric seats with driver memory; Exclusive Leather, extended; Harmon/Kardon Sound System; Lumbar support; Myrtle Wood Interior Trim	–	○

<sup>1</sup> See Retailer for complete details.



Weight			
Unladen	kg	325Ci 1475 (1515)	330Ci 1520 (1540)
Weight distribution, front/rear			
Manual transmission	%	50.4 (49.6)	50.1 (49.9)
Automatic transmission	%	51.1 (48.9)	50.6 (49.4)
Engine			
Litre/type (with Double-VANOS)		2.5/DOHC in-line 6, 24V	3.0/DOHC in-line 6, 24V
Displacement	cm <sup>3</sup>	2494	2979
Bore/stroke	mm	84.0/75.0	84.0/89.6
Nominal output/rpm	hp	184/6000	225/5900
Max torque/rpm	lb-ft	175/3500	214/3500
Compression ratio	:1	10.5	10.2
Fuel grade		Premium Unleaded	Premium Unleaded
Transmission			
Drive configuration		Rear	Rear
Manual gear ratios			
I/II	:1	4.23/2.52	4.35/2.50
III/IV	:1	1.66/1.22	1.66/1.23
V/VI/R	:1	1.00/-/4.04	1.00/0.85/4.04
Final drive ratio	:1	3.15	2.93
Automatic gear ratios			
I/II	:1	3.67/2.00	3.67/2.00
III/IV	:1	1.41/1.00	1.41/1.00
V/R	:1	0.74/4.10	0.74/4.10
Final drive ratio	:1	3.46	3.38
Brakes			
Braking system		4-channel ABS	4-channel ABS
Brake type, front and rear		ventilated disc	ventilated disc
Brake diameter front/rear	mm	300/294	325/320
Performance			
Drag coefficient	C <sub>d</sub>	0.32	0.32
Top speed <sup>1</sup>	km/h	206	206
Acceleration 0–100 km/h <sup>2</sup>	sec	7.6 (8.6)	6.8 (7.4)

Figures in ( ) apply to vehicles with automatic transmission.

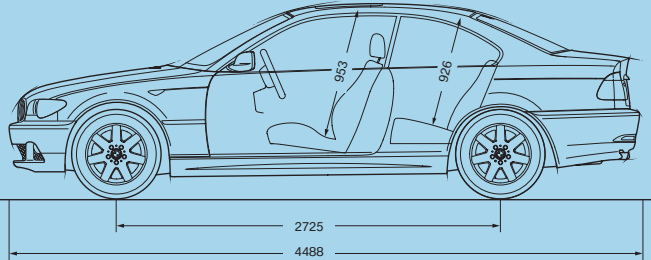
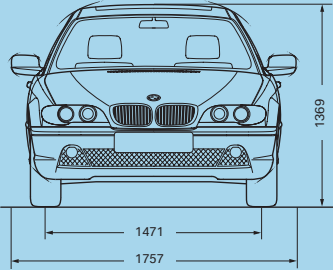
- 1 Top speed limited electronically.
- 2 BMW AG test results. Actual acceleration results may vary, depending on specification of vehicle, road and environmental conditions, testing procedures and driving style. These results should be used for comparison only and verification should not be attempted on public roads. **BMW urges you to obey all posted speed laws and always wear safety belts.**
- 3 NR Can-estimated figures are for comparison purposes only. Your actual mileage will vary, depending on speed, driving habits, trip length and driving conditions; actual mileage will most likely be lower.

Wheels		325Ci	330Ci
Tire dimensions	(standard)	205/55R-16 all-season	205/50R-17 all-season
Wheel dimensions	(standard)	7J x 16	7J x 17
Material		Cast alloy	Cast alloy

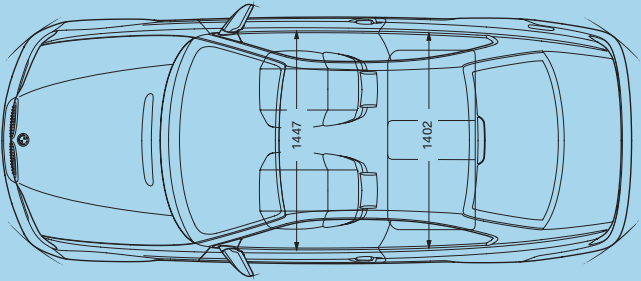
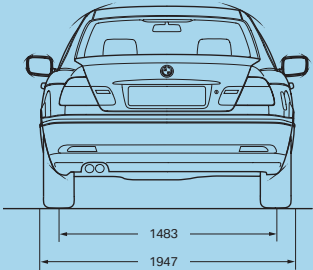
  

Fuel consumption <sup>3</sup>			
Manual transmission/SMG			
City	L/100 km	11.6	11.3
Highway	L/100 km	7.4	7.3
Automatic transmission			
City	L/100 km	11.6	11.6
Highway	L/100 km	7.7	7.7





Illustrations above:  
All dimensions in mm. Turning Circle 10.5 m; Luggage compartment capacity 410 litres.

Exclusive Canadian Importer and Distributor – BMW Canada Inc., Whitby, Ontario, LIN 6K9. All illustrations and specifications are based on product information available at the time of printing. BMW reserves the right to revise specifications at any time, without notice. BMW may, subject to legal compliance, determine the Model Year designation of its vehicles. The Model Year designation on any particular model may be longer or shorter than 12 months. Some models may be shown with optional equipment and/ or options not available in Canada. Further information can be obtained from your authorized BMW Retailer.

© 2003 BMW Group, Munich, Germany. Not to be reproduced wholly or in part without written permission of BMW Group, Munich, Germany. "BMW", the BMW logo and "The Ultimate Driving Experience" are trademarks of BMW Group, used under licence by BMW Canada Inc.