

# MDX



ACURA 2006

# Driving

Imagine experiencing an empowering drive every time you slip behind the wheel. Our take on the SUV is abundantly powerful, luxurious and sophisticated to a point well ahead of mere sport utility. For most, an SUV is just a necessity, the MDX makes it a pleasure.

# Pleasure





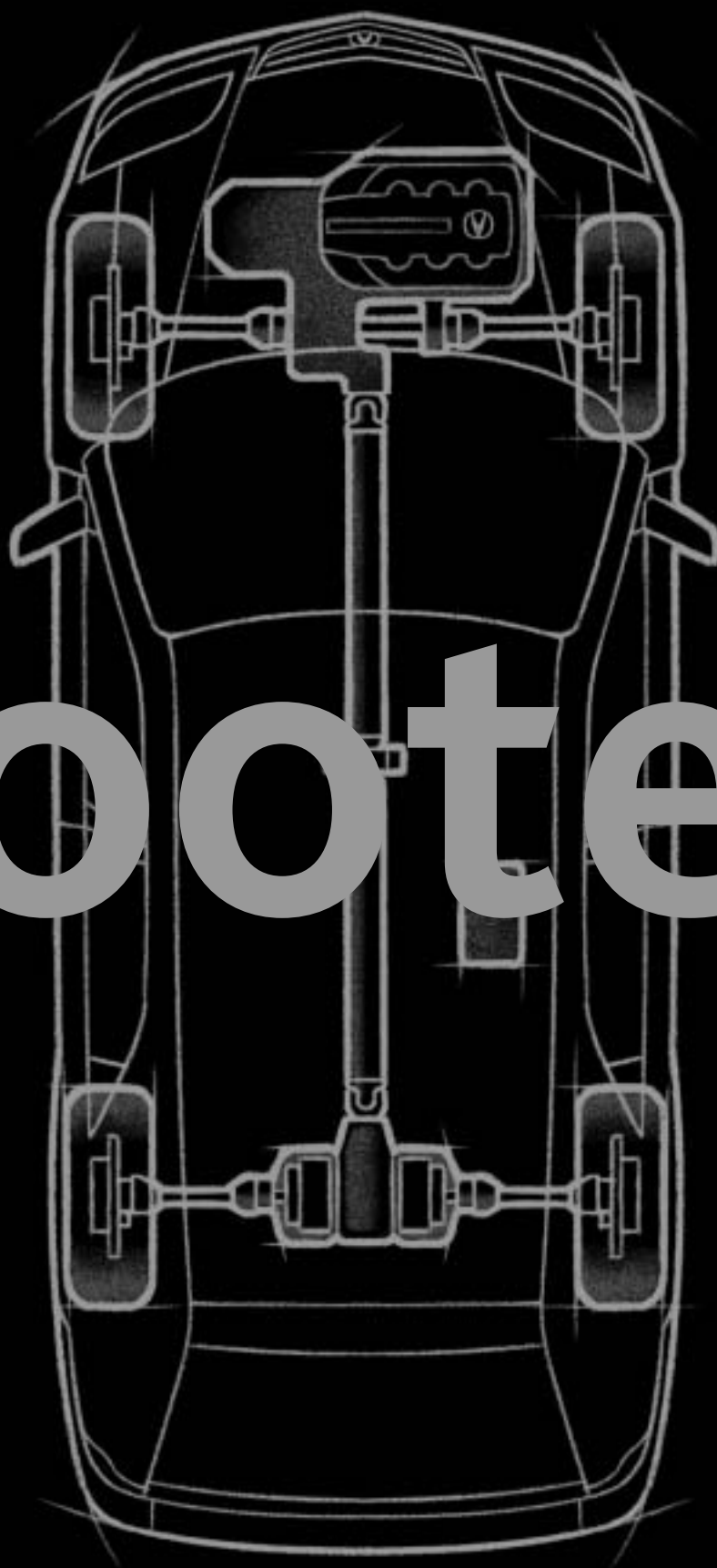


When you're in a vehicle as capable as the MDX, you'll feel the need to break free and explore. Take a look at your favourite map, and start pushing past the edges.

A close-up, high-contrast photograph of a car's headlight assembly. The headlight is illuminated, showing a bright white light source on the left and a yellowish-orange light source on the right. The word "Sure" is overlaid in a large, white, sans-serif font across the center of the headlight. The background is dark, making the headlight stand out.

Sure

# Footed



One look at the MDX and you see its dedication to perfection. One drive and you feel it. Nowhere is that more apparent than in handling, thanks to state-of-the-art technology designed to keep you connected to the road.



## **VEHICLE STABILITY ASSIST™ (VSA®) WITH TRACTION CONTROL**

VSA can detect understeer or oversteer situations, and help correct them, sometimes before you even know there's a problem (as illustrated at right).

VSA quickly measures the severity of the condition, and then reduces throttle and/or applies braking to individual wheels to compensate appropriately. If a loss of traction is detected when accelerating on a slippery surface, VSA will reduce throttle and apply braking to get you underway more safely.

## **VARIABLE TORQUE MANAGEMENT™ 4-WHEEL DRIVE SYSTEM (VTM-4®)**

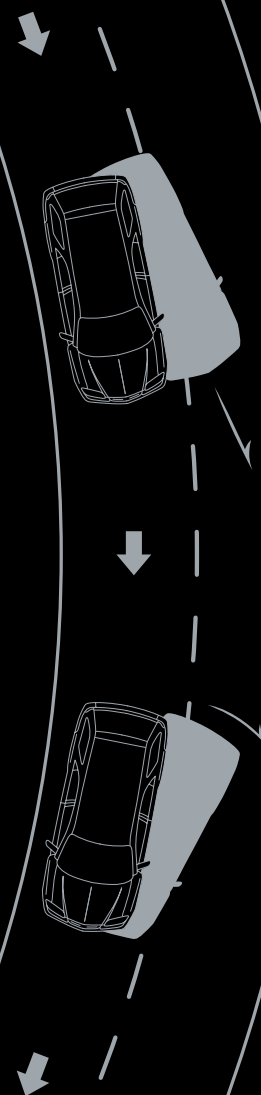
The MDX offers the traction advantage of 4-wheel drive as well as the efficiency of front-wheel drive by always delivering power to the front driveshafts. During acceleration, the VTM-4 computer calculates the optimal front/rear torque split, and two electromagnetic clutches in the rear differential adjust the engine power going to the rear wheels. If wheel slip is detected by the MDX's sensors, up to 55% of engine torque can be transferred to the rear wheels. It all happens automatically. There's also the VTM-4 Lock feature to manually lock the rear clutches, which is useful should you encounter deep snow or muddy terrain.

## **4-WHEEL INDEPENDENT SUSPENSION**

A multi-link rear and strut-type front suspension with front and rear stabilizer bars provides excellent damping and reduced body roll. The result is a smooth ride over a multitude of surfaces, as well as crisp and responsive handling. A variable power-assisted rack-and-pinion steering system responds precisely to driver input, while also reducing steering effort for parking or low-speed manoeuvres. Sporty aluminum-alloy wheels and P235/65 R17 all-season tires complete this multi-talented package.

## **4-WHEEL DISC BRAKES WITH ANTI-LOCK BRAKING SYSTEM (ABS)**

300 mm front discs are ventilated to dissipate heat buildup and help prevent brake fade. In the rear are solid 313 mm discs. The Anti-Lock Braking System (ABS) helps maintain steering control when braking hard on wet or slippery surfaces, while Electronic Brake Distribution (EBD) balances braking forces at each wheel to help compensate for uneven passenger and cargo weight distribution. The Brake Assist feature senses a panic stop and applies all available boost to help you stop quickly.





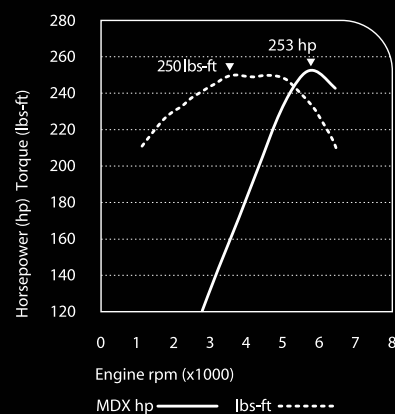
The MDX is the result of a healthy appreciation for the finer things in life. And that includes performance. After all, it was designed from the inside out with a focus on the driving experience. What else would you expect from the quintessential luxury SUV.

### 3.5-LITRE 24-VALVE V6 ENGINE

The MDX engine features an aluminum-alloy block and cylinder heads for reduced weight, and 4 valves per cylinder for free breathing. Exhaust flow is further enhanced with a dual exhaust system, which reduces back pressure for additional power. Efficient power production comes from the computer-controlled Programmed Fuel Injection (PGM-FI), and direct ignition contributes to optimal combustion of the air/fuel mixture. The MDX runs strong and worry-free, with its first scheduled tune-up at 168,000 km.

### HORSEPOWER AND TORQUE

A 3.5-litre V6 engine with output more like that of a V8. The numbers speak for themselves: 253 hp and 250 lbs-ft of torque. Note that 95% of peak torque is available at only 2,000 rpm, for inspiring pulling power from a stop and confident passing at speed. The MDX's strength also gives it an impressive 4,500-lb towing capacity<sup>2</sup>. And that power doesn't hinder environmental responsibility, as the MDX is an ultra-low emission vehicle with a Tier2 Bin5 rating.



### VARIABLE VALVE TIMING AND LIFT ELECTRONIC CONTROL (VTEC®)

In conventional internal combustion engines, efficient power output is limited to a relatively narrow rpm range. This is due to the static nature of valve timing and lift – both determined by the profile of lobes on the camshaft. In Acura's VTEC engines, this limitation is overcome by placing two sets of lobes on each camshaft. A low-rpm lobe enhances low-speed torque; then, as engine speed increases, a second, high-rpm lobe is hydraulically engaged, increasing horsepower output.

An open notebook with cream-colored, lined pages and a brown leather cover. The notebook is open to two blank pages, showing horizontal ruling lines. The leather cover is visible on the right side, featuring visible stitching along the spine. The lighting is warm and soft, creating a cozy, vintage feel.

# Creature

From intelligent onboard systems to rich, sumptuous materials, the MDX is one sport utility vehicle that welcomes the opportunity to reveal its elegant side.

The image is a composite of two photographs showing the interior of a car. The top photograph shows the rear cargo area with a bicycle mounted vertically on a rack. The bottom photograph shows the front and second-row passenger area with leather seats. The word "Comforts" is overlaid in large white letters across the middle.

# Comforts

## EURO-STYLE INTERIOR

Taking the luxurious inside of the MDX one step further, the MDX offers a sophisticated Euro-style two-tone interior. It's the perfect blend of luxury and design, with just the right amount of exclusivity.



## These are just a few of the many luxuries you'll grow accustomed to in the MDX.

### 1. AVAILABLE ACURA NAVIGATION SYSTEM

An inertial guidance system, the GPS satellite signals, road-speed sensors and a DVD-based map database pinpoint your location almost anywhere in North America on a moving map display<sup>1</sup>. Enter a destination using the bilingual Voice Recognition system and be guided there with turn-by-turn directions and voice prompts. The DVD database also provides 7,000,000 points of interest, including restaurants, gas stations, ATMs and more.

### 2. ACURA DVD AND BOSE® ENTERTAINMENT SYSTEM

The available Acura DVD Entertainment System comes with 2 pairs of wireless infrared headphones so front and rear passengers can enjoy separate audio sources. A hand-held remote control is included to select audio tracks, adjust volume or control functions of the DVD player. The superior Bose® acoustics of the MDX begin with extensive sound insulation. Your favourite audio is reproduced by 8 speakers, from the AM/FM receiver or in-dash 6-CD player. All operated from the steering wheel-mounted audio controls.

### 3. DUAL FRONT/REAR SYNCHRONIZED AUTOMATIC CLIMATE CONTROL

From cold mountain tops to blistering desert valleys, the MDX has a climate control system up to the task – with up to 19,000 BTUs of heating and cooling capacity. Micron air filtration minimizes dust and pollen. And the second-row passengers get their own controls.

### 4. POWER MOONROOF WITH TILT AND SLIDING SHADE

The standard power moonroof features a thin design that preserves headroom. Use the tilt feature for increased ventilation. Or power it all the way back for an open-air driving experience. A wind deflector rises automatically to minimize wind noise. The moonroof's tinted glass and sunshade help block out radiant heat.

### 8-WAY POWER SEATS

Tailor-fit your seating position with the 8-way power adjustable seats, including power lumbar adjustment for the driver. The remote-linked driver recognition feature lets the driver recall preferred seat and side-mirror positions.



### 5-SPEED AUTOMATIC TRANSMISSION WITH GRADE LOGIC CONTROL SYSTEM

Smooth, quick shifts are handled by a 5-speed automatic transmission. Electronic sensors work in concert with the Drive-by-Wire Throttle System™ to provide graceful shifting between gears. Grade Logic Control helps eliminate gear hunting while traversing hilly areas, holding a lower gear uphill for better response and downhill for increased engine braking.



The available 2006 Touring Edition gives you the most out of your MDX experience and ensures every trip is taken in both style and comfort.



### REAR SPOILER

Designed for the pure driving enthusiast, yet admired by everyone else, the body-coloured, aerodynamic spoiler adds high-performance appeal and a degree of personalization to your MDX.



Image courtesy of Universal Studios.

### REAR ENTERTAINMENT SYSTEM

This versatile entertainment system lets your rear passengers watch movies or listen to their own music CDs. The auxiliary second row A/V inputs will also let them connect a video-game console and play games on the bright flip-down 7-inch LCD screen.

### SIDE STEP BARS

With an exterior design that demands this much notice, it only makes sense to pay attention to the details. Details like side step bars made from lightweight alloy and heat-treated for increased strength and resistance to corrosion.

### TOURING EDITION ALSO INCLUDES:

- Wireless headphones
- Metallic mirror covers
- All-season floor mats
- Body-coloured side mouldings





**Safety – we’ve employed some of our most innovative thinking and revolutionary designs to make sure the MDX not only meets the highest safety standards, it helps set them.**

#### **DUAL-STAGE, DUAL-THRESHOLD FRONT AIRBAGS**

Dual-stage, dual-threshold front airbags\* deploy at one of two rates and thresholds, depending on the degree of the impact and seatbelt use. They team with the 3-point seatbelts and standard front side and side curtain airbags to help lessen or prevent injury to head, neck and torso in a sufficient impact. In addition, passenger side airbags are equipped with Occupant Position Detection System™ (OPDS™) that includes height and position sensors designed to prevent the deployment of the passenger’s side airbag if a child or small adult is out of position. The side curtain airbags provide added head protection in all three rows in a sufficient side impact, or if a system sensor detects the imminent occurrence of one of three distinct rollover scenarios.

#### **FRONT AND REAR CRUMPLE ZONES AND SIDE-IMPACT DOOR BEAMS**

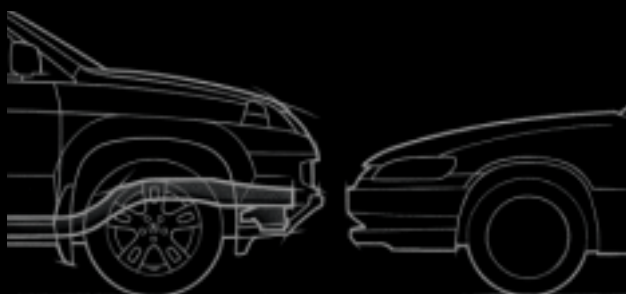
The MDX is designed with a strong safety-cell passenger cabin with front and rear crumple zones. These zones help absorb impact energy and dissipate those forces before they reach the occupants. Sturdy steel door beams help prevent the intrusion of impact forces in the event of a side impact.

\*Always use seatbelts and appropriate child seats. Children 12 and under are safest when properly secured in the rear seat. Front airbags inflate and deflate in a fraction of a second.



#### CRASH-COMPATIBLE FRONT BUMPER

Unlike many SUVs, the MDX's front subframe has a specially designed compatibility bracket to help absorb impact energy. This helps reduce the possibility of override on smaller vehicles in the event of a frontal collision.



#### TIRE PRESSURE MONITORING SYSTEM

Correct tire pressure is critical to both safety and performance. In the MDX, the TPMS continually monitors the air pressure in each tire. If pressure drops to a critical level, a transponder attached to the wheel's valve stem transmits data to a receiver. A warning appears on the instrument panel, indicating which tire needs attention.



#### REAR VIEW CAMERA

Models equipped with the Navigation System also feature a rear view camera. It's activated automatically – even if the navigation system is turned off – when the driver shifts into reverse. A colour image appears on the navigation system's screen, enhancing your rearward visibility.

# SPECIFICATIONS

## POWERTRAIN

Drivetrain	4-wheel drive with Variable Torque Management™ (VTM-4®)
Engine Type	3.5-litre, 24-valve, SOHC, V6
Horsepower	253-hp @ 5800 rpm (SAE net Rev 8/04) <sup>‡</sup>
Torque	250 lbs-ft @ 3500-5000 rpm <sup>‡</sup>
Redline	6300 rpm
Bore and Stroke	89 mm x 93 mm
Displacement	3471 cc
Compression Ratio	10.0:1
Fuel System	Programmed Fuel Injection (PGM-FI)
Throttle System	Drive-by-Wire Throttle System™
Valvetrain	4 valves per cylinder, belt-driven, single overhead camshaft with VTEC®
Engine Block	Aluminum-alloy
Emission Control	Surpasses the stringent 2005 Tier2 Bin5 emission requirements
Ignition System	Electronic direct
Transmission	5-speed automatic, Grade Logic Control and lockup torque converter

<sup>‡</sup>Horsepower and torque calculations reflect new SAE J1349 procedures revised August 2004.

## SUSPENSION / CHASSIS

Suspension		4-wheel independent front struts with rear multi-link
Shock Absorbers		Twin-tube gas-pressurized
Steering Type		Variable power-assist rack-and-pinion
Stabilizer Bars	Front	23 mm diameter
	Rear	20 mm diameter
Steering Wheel Turns, Lock-to-Lock		3.22
Turning Radius, Curb-to-Curb (at Body)		5.79 m
Wheels		Aluminum-alloy, 17" x 6.5" JJ
Tires		All-Season P235/65 R17
Braking System		Power-assisted 4-wheel disc, with 4-channel Anti-Lock Braking System (ABS)
Front Discs		Ventilated, 300 mm diameter
Rear Discs		313 mm diameter

## CAPACITIES

Engine Oil	5.3 litres refill capacity	
Cooling System	9.0 litres	
Washer Tank	4.5 litres	
Fuel Tank	77 litres	
Passenger Volume	4572 litres	
Cargo Volume	2nd and 3rd rows folded	2308 litres
	3rd row folded	1405 litres
	Behind 3rd row	419 litres

## FUEL ECONOMY

Fuel Consumption (L/100 km)	City / Highway: 13.8 / 10.2*
Recommended Fuel	Premium unleaded, 91 octane <sup>†</sup>

<sup>\*</sup>2005 data shown. Use mileage for comparison purposes only. Your mileage may vary. See your Retailer for latest 2006 Ener Guide published by NRCan (when available). <sup>†</sup>Gasoline with an octane number lower than 91 may be used, with reduced performance.

## SAFETY FEATURES

Anti-Lock Braking System (ABS) with Electronic Brake Distribution (EBD)
Vehicle Stability Assist™ (VSA®) with Traction Control System (TCS)
Driver and front passenger dual-stage, dual-threshold front airbags (SRS)
Driver and front passenger side airbags (SRS) with front passenger Occupant Position Detection System™ (OPDS™)
Side curtain airbags with rollover sensors (all 3 rows)
Tire Pressure Monitoring System™ (TPMS™)
3-point seatbelts, with Automatic Locking Retractor (ALR) and Emergency Locking Retractor (ELR), front passenger and rear
Front seatbelt pretensioners
Front adjustable seatbelt anchors
Head restraints at all positions
Keyless remote entry system with panic feature
Security and ECU immobilizer systems
Childproof rear door locks
LATCH Child Safety Seat Anchor System (2nd row)

In addition to the base model, the following are available:

## TOURING EDITION

Acura DVD Rear Entertainment System with 7" view screen
Wireless headphones
Body-coloured rear spoiler
Side step bars
Metallic mirror covers
All-season floor mats
Body-coloured side moulding

## TECH PACKAGE

Acura Navigation System <sup>1</sup> with Bilingual Voice Recognition™ and steering wheel-mounted controls
Rear view camera when in reverse
Acura DVD Rear Entertainment System with 7" view screen
Wireless headphones

## EXTERIOR FEATURES

Power-operated heated door mirrors, body-coloured

Chrome door handles

Auto-on / off headlights

Fog lights

Roof rack with crossbars

Super heat absorbing green tinted glass

Projector beam headlights

Splash guards

Trailer hitch pre-wire

Dual-outlet exhaust with chrome tailpipe finishers

Rear privacy glass

Rear window defroster with timer

## SEATING AND TRIM

Leather-trimmed interior

8-way power-adjustable driver's seat with power lumbar support and 2-position memory control

8-way power-adjustable passenger's seat

Heated front seats

Leather-wrapped steering wheel and shift knob

Wood-grain trim

Leather-covered centre console armrest with storage

Adjustable front headrests

Carpeted floor mats

## COMFORT AND CONVENIENCE

Front and rear synchronized Automatic Climate Control System with Micron Air Filtration System

Acura/Bose® Sound System with AM/FM/CD stereo, in-dash 6-disc changer and 8 speakers, including subwoofer

Trip computer with compass, exterior temperature indicator, information on elapsed distance and time, fuel consumption and remaining fuel / distance calculator

Cruise control

HandsFreeLink™ bilingual wireless telephone interface with steering wheel-mounted controls

HomeLink® system\*

Power-operated moonroof with tilt feature, privacy glass and sliding shade

Power door locks and windows with driver's one-touch up / down feature

Passenger side door mirror auto tilt feature when in reverse

Adjustable steering column

Steering wheel-mounted audio system and cruise controls

LED backlit gauges with progressive self-illumination

Illuminated power window controls and ignition lock surround

Ambient blue LED lighting: overhead console and footwells

Front overhead map lights

Driver's and passenger's illuminated vanity mirrors

Sunglasses holder

Front, middle and rear beverage holders

Front, centre console and rear accessory sockets

Rain-sensing windshield wipers with speed-sensitive variable intermittent feature

Rear wiper with intermittent feature and washer jet

Remote lockable fuel-filler door release

\*Can be programmed with the codes of up to three remote-control devices (e.g., garage-door opener, home security system, etc.). Additional control devices not provided by Acura may be required.

## EXTERIOR DIMENSIONS

Wheelbase 2700 mm

Track, front 1685 mm

Track, rear 1690 mm

Length 4789 mm

Width 1955 mm

Height 1811 mm

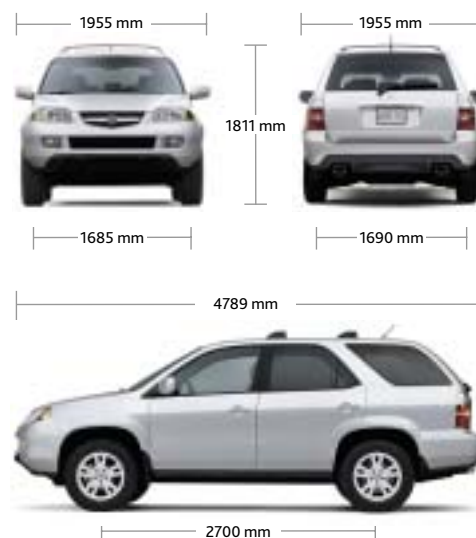
Ground clearance, minimum / maximum 181 / 203 mm

Curb weight 2046 kg

Approach angle 28°

Departure angle 21°

Breakover angle 21°



## INTERIOR DIMENSIONS (mm)

Front / 2nd row / 3rd row:

Headroom 976 / 990 / 918

Legroom 1055 / 959 / 745

Hiproom 1446 / 1431 / 1232

Shoulder room 1555 / 1551 / 1489

## ACCESSORIES

*Personalize your Acura MDX with Genuine Acura Accessories. Ask your Retailer for additional information.*

Side mouldings (body-coloured)

Steering wheel – wood (black or saddle)

Bike attachment – interior

Separation net

Cargo liner

Cargo tray

Cargo net

All-weather floor mats

Full nose mask

Locking wheel nuts

Back-up sensor (body-coloured)

Fender flares

Door visor kit



**The Acura Experience.** At Acura, we believe owning a luxury vehicle goes well beyond the engineering and amenities. That's why we are equally committed to making your ownership experience a luxurious one. So, every new Acura comes with: 24-hour Roadside Assistance for the first four years of ownership, which includes our Dispatch Emergency Roadside Service, Emergency Lockout Service, Traffic Accident Services and more • First two scheduled maintenance procedures • Complimentary tank of gas at time of delivery. See your Acura retailer for details.



#### WARRANTY

Your new Acura vehicle comes with the following warranties: • Major Component – 5-year/100,000-km limited warranty • Vehicle – 4-year/80,000-km distributors limited warranty • Rust Perforation – 5-year unlimited-distance warranty • Surface Corrosion – 3-year unlimited-distance warranty • Accessories – 4-year/80,000-km limited warranty (when installed by an authorized Acura retailer at time of new vehicle delivery). Regular maintenance items and parts are subject to normal wear and replacement, and are not covered by warranty. Certain other items are excluded, and certain conditions apply. See your Acura retailer for complete details.

#### ACURA PLUS

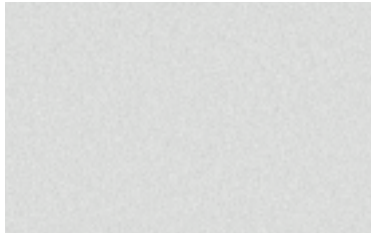
As a new Acura owner, you can help to prolong your worry-free ownership experience by purchasing additional coverage. Just choose from our flexible selection of Mechanical Coverage that extends up to 7 years or 160,000 km, whichever comes first. You can also extend your Roadside Assistance. Ask your Acura retailer for full details.

#### LEASING AND FINANCING

We offer an array of options to make owning an Acura easy. Ask your Acura retailer for complete details on: Acura Leadership Leasing\*, Acura Future Value Financing\* and Conventional Financing\*.

\*A genuine service of Honda Canada Finance Inc. Conditions, restrictions and pre-payment requirements might apply O.A.C. \*Acura Future Value Financing\* does not apply in the province of Quebec.

# COLOUR AND TRIM



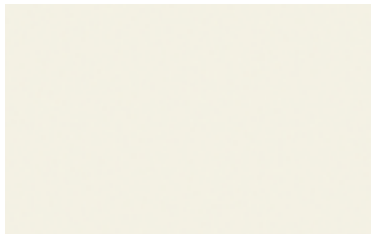
Billet Silver Metallic



Nighthawk Black Pearl



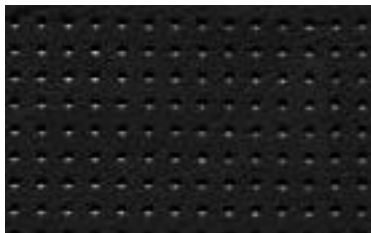
Steel Blue Metallic



Aspen White Pearl



Slate Grey Pearl



Black Leather



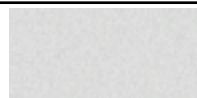
Saddle Leather



Grey Leather

## MDX

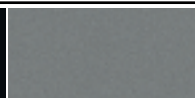
### Exterior



Billet Silver Metallic  
NH-689M



Nighthawk Black Pearl  
B-92P



Steel Blue Metallic  
B-533M



Aspen White Pearl  
NH-677P



Slate Grey Pearl  
NH-662P

### Interior

MDX					
	Black Leather	Black or Saddle Leather	Grey Leather	Grey or Saddle Leather	Grey Leather
TOURING EDITION			N/A	N/A	
	Black Leather	Black or Saddle Leather	N/A	N/A	Grey Leather
TECH PACKAGE					
	Black Leather	Black or Saddle Leather	Grey Leather	Grey or Saddle Leather	Grey Leather

Specifications, features, illustrations and equipment shown in this catalogue are based upon the latest available information at the time of publication. \*Remember your seatbelts. It's a simple fact of life. Although descriptions are believed to be correct, accuracy cannot be guaranteed. Honda Canada Inc. reserves the right to make changes at any time, without notice or obligation, in colours, specifications, accessories, materials and models. Some vehicles are shown with optional equipment. <sup>1</sup>Map database of the Acura Navigation System covers major metropolitan areas in southern Canada and the 48 contiguous U.S. states. For a list of current detailed coverage areas, refer to the Acura website, [www.acura.ca](http://www.acura.ca). <sup>2</sup>Towing requires installation of power-steering and transmission fluid coolers, both available exclusively from your Acura retailer. Maximum towing capacity is 4,500 lbs for boat trailers and 3,500 lbs for all other trailers. Refer to the owner's manual for additional towing information. Some vehicles shown are U.S. models, Canadian specifications may vary. Bose® is a registered trademark of Bose Corporation. Richbass™ is a trademark of Bose Corporation. Acura, a division of Honda Canada Inc., 715 Milner Avenue, Toronto, Ontario, Canada M1B 2K8. 1-888-9-ACURA-9. [www.acura.ca](http://www.acura.ca). Acura, MDX, i-VTEC, VTEC, Sequential SportShift and Variable Timing Control (VTC) are registered trademarks of Honda Motor Co. Ltd.



