

TL



ACURA 2006



Total

Start with a vision of tomorrow's automotive ideal. Shape it with innovative technology of our time. The result? The perfect combination of performance, luxury and attitude.

Awe



Imagine, create, perfect – consistently and without compromise. It's the Acura way. One moment behind the wheel of the TL and you'll quickly know how advanced thinking gives shape to the ideal sports sedan and elevates the pure driving experience.





Power



The new TL unites the style you seek with the power you demand. Never again will you experience luxury without exhilaration.

Play



Put your right foot down and move forward with all the force that 258 horsepower offers. It's a treat for the senses and the soul.

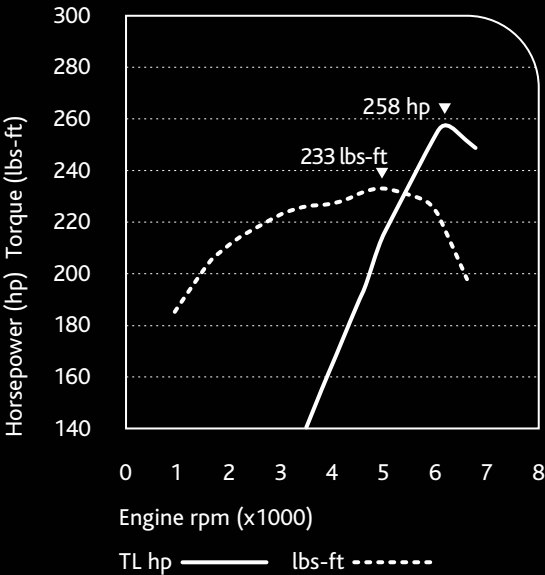
3.2-LITRE, 24-VALVE VTEC® V6 ENGINE

Acura engines are simultaneously powerful and efficient, performance that only intelligent design can deliver. The TL's power plant features a 4-valve-per-cylinder design that optimizes intake and exhaust flow, the latter further enhanced by a high-flow exhaust system. The Programmed Fuel Injection (PGM-FI) calculates the precise air/fuel mixture, and the direct ignition system initiates a super-hot spark at just the right time. And the engine's block and heads are aluminum, for lighter weight and better heat dissipation.



HORSEPOWER AND TORQUE

The TL combines abundant horsepower and torque so you get quick acceleration throughout the rev range. The power is readily available, as demonstrated by the wide and flat torque curve.



DUAL-STAGE INTAKE MANIFOLD WITH COLD-AIR INDUCTION

The TL is designed to deliver the strongest performance across all rpms. At low engine speeds, a valve within the TL's intake manifold is closed, taking advantage of sonic resonance within the intake plenum to optimize cylinder charging. At higher speeds, the valve opens to cancel out the resonance effect and enable intake inertia to fill the cylinders. All the while, it's fed by air drawn from the outside of the engine compartment. This cooler, denser air has more oxygen. More oxygen means better acceleration. And better acceleration means a happier driver.







VARIABLE VALVE TIMING AND LIFT ELECTRONIC CONTROL (VTEC®)

An impressive horsepower number reaches its highest potential when the rest of the car knows what to do with it. That's where the TL's VTEC technology comes into play. VTEC places two sets of lobes on the camshaft to help each set of valves achieve their most efficient power output. A low-rpm lobe creates the best profile for low-speed torque, while an electronically controlled hydraulic system switches to a second lobe, shaped for better high-rpm performance as speed increases. The result is excellent horsepower output.

DRIVE-BY-WIRE THROTTLE SYSTEM™

For lightning-quick response to your acceleration demands, the TL's throttle is controlled by a sophisticated electronic system. It takes information from various sensors in the engine and around the chassis, processes the data in its electronic control unit (ECU), and opens the throttle according to current conditions. So when the road is slippery or traffic is heavy, throttle response is more gradual to ensure smooth driving conditions. And when you want instant acceleration, throttle response is more immediate. You get better control, better stability and less driver fatigue.



The

A photograph of a car's interior, focusing on the driver's side. The steering wheel is on the left, and the dashboard features a large central infotainment screen. The seats are upholstered in a light-colored, textured leather. The overall design is sleek and modern, with a focus on high-quality materials and precise engineering.

Cockpit

From precision-machined controls to the remarkably satisfying solid switch gear, the TL is crafted with exacting attention to detail. With the driver as the focus, the TL is equipped with systems so intelligent, they seem to know what you want even before you do.



5-SPEED SEQUENTIAL SPORTSHIFT™ AUTOMATIC TRANSMISSION

The TL's advanced transmission gives you the power to choose between fully automatic or manual shift modes. In automatic mode, a shift-hold control program detects aggressive driving and will hold the gear longer for spirited engine response. And its advanced Grade Logic Control system limits gear hunting whether you're going up or down hills, for a noticeably smoother ride.

Simply move the lever to the side of the shift gate and let the fun begin. Snap it forward for upshifts and back for downshifts. And you'll be amazed at how quickly it responds to your commands.



ACURA/ELS™ PREMIUM 8-SPEAKER SURROUND SOUND SYSTEM

To further enhance your driving experience, steering wheel-mounted controls give you full access to the world's first true multi-channel surround sound system in a vehicle. Developed with Elliot Scheiner, a multiple Grammy® winning engineer and producer, the 6-channel system achieves astonishing levels of audio detail. Eight speakers, including a centre front channel and rear subwoofer, create a truly immersive listening experience.

IN-DASH CD/DVD-AUDIO 6-DISC CHANGER

If the TL's exceptional Surround Sound System with six discrete channels isn't enough of an auditory reward, its DVD audio capabilities are. In addition to conventional CDs, the TL's high fidelity audio system plays DTS Music Discs and DVD-Audio discs for 500 times the audio resolution of a standard CD. Audiophiles, fear not leaving your surround sound system at home.



ACURA NAVIGATION SYSTEM WITH VOICE RECOGNITION

This sophisticated system tracks your travel using input from GPS satellites, a gyroscopic yaw sensor and a vehicle speed sensor. An 8.0 gigabyte DVD database of maps and points of interest offers a world of destinations, displayed on a large, 8-inch colour LCD touch-screen. Rendering bread crumbs virtually useless.

Equip your TL with the available Acura Navigation System and your hands will never have to leave the wheel. The Bilingual Voice Recognition feature lets you perform over 290 functions – including dozens of audio system and climate control operations – by simply pushing a button on the steering wheel and speaking your command. The TL recognizes your voice and responds instantly. How refreshing.

HANDSFREELINK™ WIRELESS TELEPHONE INTERFACE

For hands-free calls and a more hands-on driving experience, the TL is ready to communicate with your Bluetooth-compatible cell phone. Once the TL and your phone are linked, you simply speak the phone number or the name of the person you want to call and the TL dials it for you. When you get someone on the other end, the audio system is automatically muted and their voice comes through the speakers. Similarly, when you receive a call, the system mutes, you're given verbal notification and with a push of a button you are connected to the call. When you hang up, the audio system is brought back. And it's easy to transfer calls between the car and your handset, so you can continue conversations while entering or exiting the vehicle.

ENHANCED PERSONALIZATION FEATURES

The TL affords you many ways to tailor the car to your individual preferences and needs. You can fine-tune your driving position with its 8-way power driver's seat with power lumbar adjustment and the tilt and telescoping steering column. Choose whether you want the doors to automatically lock when you start driving – and when. Automatic unlocking is also available. Program your remote to open the driver's door only, or all four doors. How long do you want the lights to stay on after you exit the car? From a 60-second delay to instant shut-off, or points in between – it's completely up to you. You can even customize how long it takes for the interior lights to dim after the last door is closed.



REMOTE OPERATIONS

A car as sophisticated as the TL deserves no ordinary remote. The TL's remote will not only lock and unlock, it can also open all four windows and the moonroof as you approach the car. Each control can also be linked to different drivers, remembering their seat, mirror, audio and climate control preferences.



FRONT, FRONT SIDE AND SIDE CURTAIN AIRBAGS

3-POINT SEAT BELTS & LATCH SYSTEM

ENERGY-ABSORBING FRONT AND REAR CRUMPLE ZONES

The TL sees safety the way it sees everything else: an opportunity to innovate.

ENERGY-ABSORBING FRONT AND REAR CRUMPLE ZONES

Meticulous body design shapes the TL's front and rear crumple zones. They compress in a controlled manner to help absorb impact energy and direct it around you and the entire passenger cabin. The rigid safety cell uses high-tensile steel in stressed areas. And energy-absorbing padding teams with the steel door beams for excellent side-impact protection.

3-POINT SEAT BELTS & LATCH SYSTEM

All five passengers are held securely by 3-point seat belts. The two front seats feature pretensioners linked to the airbag system to remove slack in a sufficient impact. The front seat belts also feature load limiters, which help reduce the forces acting on occupants in a collision. And the TL has the Lower Anchors and Tethers for Children (LATCH) system in the rear outboard seating positions, to ease the installation of compatible child seats.

FRONT, FRONT SIDE AND SIDE CURTAIN AIRBAGS

Dual-stage, dual-threshold front airbags deploy at one of two rates and thresholds, depending on impact severity and seat belt use. The front passenger's side airbag is equipped with the Occupant Position Detection System™ (OPDS™), which prevents deployment if a child or smaller adult is out of position. And side curtain airbags help lessen or prevent head and neck injury in a side impact of sufficient force.



RIGID UNIBODY CONSTRUCTION

The TL's ultra-rigid unibody construction creates higher front and rear torsion which gives you exceptional handling. Acura engineers achieved these results with the extensive use of high-tensile steel, large stiffening struts in the front bulkhead and between the front shock towers, and a huge box-section cross-member beneath the rear window.

TIRE PRESSURE MONITORING SYSTEM (TPMS)

New for 2006, TPMS continually monitors tire pressure with sensors located at each wheel. If the pressure of any tire falls below a critical level, the system displays an alert message on the TL's multi-information display.



4-WHEEL INDEPENDENT SUSPENSION FRONT DOUBLE-WISHBONE, REAR MULTI-LINK

Taking a cue from race-car suspension geometry, the TL's suspension uses a short upper arm for maximized camber gain, so the tires bite harder as the suspension compresses in a turn. A high-placed lower arm helps create superb steering feel. And rather than a more conventional control arm bushing, the rear suspension has a highly precise pillow joint, for enhanced handling and stability. Meanwhile, stout stabilizer bars help to limit body roll for quick, flat cornering.



4-WHEEL DISC BRAKES WITH ABS, EBD™ AND BRAKE ASSIST

The ventilated front rotors and solid rear discs give you smooth, fade-resistant stopping. The Anti-lock Braking System (ABS) gives you steering control when braking hard or on low-traction surfaces. The Electronic Brake Distribution (EBD™) balances braking forces at each wheel according to how the vehicle is loaded. And Brake Assist senses a panic stop and automatically applies all available boost to help you stop quickly.

SPECIFICATIONS

POWERTRAIN

Drivetrain	Front-wheel drive
Engine Type	3.2-litre, 24-valve, SOHC V6
Horsepower	258 hp @ 6200 rpm (SAE net Rev 8/04) ^Ø
Torque	233 lbs-ft @ 5000 rpm ^Ø
Redline	6800 rpm
Bore & Stroke	89 mm x 86 mm
Displacement	3210 cc
Compression Ratio	11.0:1
Fuel System	Programmed Fuel Injection (PGM-FI)
Throttle System	Drive-by-Wire Throttle System™
Valvetrain	4 valves per cylinder, belt-driven, single overhead camshaft with VTEC®
Engine Block	Aluminum-alloy
Emission Control	Surpasses the stringent 2005 Tier-2 emission requirements
Ignition System	Electronic direct
Transmission	5-speed automatic Sequential SportShift™ with Grade Logic Control and lock-up torque converter (TL & NAVI) 6-speed manual close-ratio with Limited Slip Differential (Dynamic & Dynamic NAVI)

^ØHorsepower and torque calculations reflect new SAE J1349 procedures, revised August 2004.

SUSPENSION/CHASSIS

Suspension	4-wheel independent double-wishbone with rear multi-link
Shock Absorbers	Twin-tube gas type
Steering Type	Variable power-assist rack-and-pinion
Stabilizer Bars	Front 25.4 mm diameter (TL & NAVI) 27.2 mm diameter (Dynamic & Dynamic NAVI) Rear 17 mm diameter (TL & NAVI) 20 mm diameter (Dynamic & Dynamic NAVI)
Wheels	Aluminum-alloy, 17" x 8" JJ
Tires	All-Season 235/45 R17 W (TL & NAVI) Summer High Performance ¹ 235/45 R17 W (Dynamic & Dynamic NAVI)
Braking System	Power-assisted 4-wheel disc with Anti-Lock Braking System (ABS)
Front Discs	Ventilated, 300 mm diameter (TL & NAVI) Ventilated, 310 mm diameter, with Brembo® calipers (Dynamic & Dynamic NAVI)
Rear Discs	282 mm diameter

¹Tread pattern not designed for winter driving; see your Retailer for details.

CAPACITIES

Fuel Tank	64.7 litres
Passenger Volume	2772 litres
Cargo Volume	353 litres (TL & Dynamic) 348 litres (NAVI & Dynamic NAVI)

FUEL ECONOMY

Manual Transmission (L/100 km)	City / Highway: 11.8 / 8.1*
Automatic Transmission (L/100 km)	City / Highway: 11.8 / 8.1*
Recommended Fuel	Premium unleaded, 91 octane [†]

*2005 Data shown. Use mileage for comparison purposes only. Your mileage may vary. See Retailer for the 2006 Transport Canada data. [†]Gasoline with an octane number lower than 91 may be used, with reduced performance.

SAFETY FEATURES

Anti-Lock Braking System (ABS)
Electronic Brake Distribution™ (EBD™)
Vehicle Stability Assist™ (VSA®) with Traction Control
Driver and front passenger dual-stage, dual-threshold front airbags (SRS)
Driver and front passenger side airbags (SRS) with front passenger Occupant Position Detection System™ (OPDS™)
Side curtain airbags
3-point Automatic Locking Retractor (ALR) seat belts (front passenger, rear)
3-point Emergency Locking Retractor (ELR) seat belts
Front seat belt pretensioners
Front adjustable seat belt anchors
Driver and passenger side mirrors tilt down when in reverse
Keyless remote entry system with panic feature
Security and ECU immobilizer systems
Childproof rear door locks
LATCH Child Safety Seat Anchor System
Tire Pressure Monitoring System (TPMS)
Xenon High-Intensity Discharge (HID) headlights
Automatic transmission interlock feature

DYNAMIC PACKAGE[‡] (Available)

6-speed close-ratio manual transmission with Limited Slip Differential		
Brembo® 4-piston front brake calipers		
Tires: Summer High Performance¹ 235/45 R17 W		
Stabilizer Bars	Front	27.2 mm diameter
	Rear	20 mm diameter

NAVI PACKAGE[‡] (Available)

Acura Navigation System [‡] with Bilingual Voice Recognition™ and steering wheel-mounted controls
Voice-activated climate and stereo controls
3D solar sensor for climate control system

[‡]Optional Dynamic and NAVI packages are available separately, or in combination with each other. See your Retailer for details.

EXTERIOR FEATURES

Power-operated heated door mirrors	Body-coloured
Bumpers	Body-coloured
Side sills	Body-coloured
Door handles	Body-coloured
Front splash guards	
Chrome-tipped dual exhaust	
Heat-absorbing green-tinted glass	
Integrated rear glass antenna	

SEATING AND TRIM

Leather-trimmed interior
8-way power-adjustable driver's seat with power lumbar support and 2-position memory control
4-way power-adjustable passenger's seat
Heated front seats
4-way adjustable front seat headrests
Leather-wrapped steering wheel and shift knob
Aluminum trim with wood-grain or carbon fibre accents
3-position armrest with storage compartment
Adjustable rear seat headrests
Rear seat centre armrest with lockable trunk pass-through and beverage holders
Carpeted floor mats

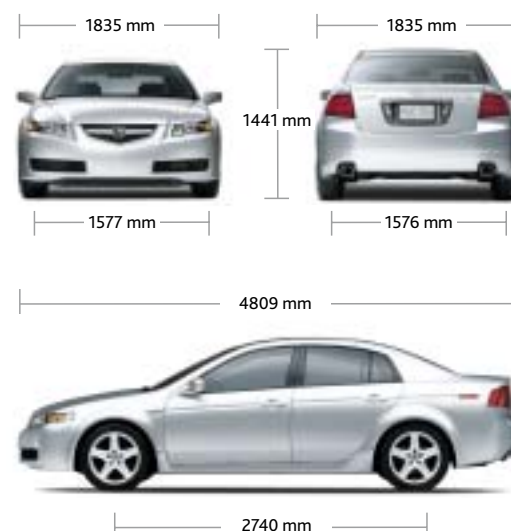
COMFORT AND CONVENIENCE

Dual-zone, dual-mode Automatic Climate Control System with Micron Air Filtration System
Acura/ELS™ Premium 8-speaker Surround Sound System with DVD-Audio, DTS® and 6-disc changer, AM/FM tuner and Dolby® cassette
Cruise control
HandsFreeLink™ bilingual wireless telephone interface with steering wheel-mounted controls
HomeLink® system*
Multi-Information Display
Maintenance Minder
Keyless memory settings
Power-operated moonroof with tilt feature, privacy glass and sliding shade
Power door locks
Power windows with driver's and passenger's one-touch up/down feature
Steering wheel-mounted audio system controls
2-position remote-linked driver's seat, outside mirrors and climate control memory
Interior ambient console lighting
Illuminated power window controls and ignition lock surround
Overhead map light
Dual rear map lights
Sunglasses holder
Front and rear beverage holders
Exterior temperature indicator
Speed-sensitive windshield wipers with variable intermittent feature
Trunk net and hook

EXTERIOR DIMENSIONS

Wheelbase	2740 mm
Track, front	1577 mm
Track, rear	1576 mm
Length	4809 mm
Width	1835 mm
Height	1441 mm
Ground clearance	148 mm
Weight distribution	MT: 60.1 / 39.9 F/R % (Dynamic) MT: 59.9 / 40.1 F/R % (Dynamic NAVI) AT: 61.5 / 38.5 F/R % (TL) AT: 61.3 / 38.7 F/R % (NAVI)
Curb weight	MT: 1583 / AT: 1623 kg (Dynamic/TL) MT: 1588 / AT: 1628 kg (Dynamic NAVI/NAVI)

MT = Manual transmission AT = Automatic transmission



INTERIOR DIMENSIONS (mm)

Front/rear	Headroom	984 / 945
	Legroom	1088 / 887
	Hiproom	1412 / 1367
	Shoulder room	1482 / 1414

ACCESSORIES

Personalize your Acura TL with Genuine Acura Accessories.
Ask your Acura Retailer for additional information.

18" Alloy wheels
Back-up sensor (body-coloured)
Body side moulding (body-coloured)
Car cover
Door visor kit
Engine block heater
Front / rear / side skirts
Full / half nose mask
Locking wheel nuts
Rear lip spoiler
Rear wing spoiler
Shift knob - wood (automatic transmission only)

The A-Spec kit includes:

Alloy wheels	Rear skirt
Sports suspension	Spoiler
Front skirt	A-Spec emblem
Side skirts	

*Can be programmed with the codes of up to three remote-control devices (e.g. garage door opener, home security system).
Additional control devices not provided by Acura may be required.



The Acura Experience. At Acura, we believe owning a luxury vehicle goes well beyond the engineering and amenities. That's why we are equally committed to making your ownership experience a luxurious one. So, every new Acura comes with: 24-hour Roadside Assistance for the first four years of ownership, which includes our Dispatch Emergency Roadside Service, Emergency Lockout Service, Traffic Accident Services and more • First two scheduled maintenance procedures • Complimentary tank of gas at time of delivery. See your Acura retailer for details.



Silver vehicle shown is a TL A Spec.

WARRANTY

Your new Acura vehicle comes with the following warranties: • Major Component – 5-year/100,000-km limited warranty • Vehicle – 4-year/80,000-km distributors limited warranty • Rust Perforation – 5-year unlimited-distance warranty • Surface Corrosion – 3-year unlimited-distance warranty • Accessories – 4-year/80,000-km limited warranty (when installed by an authorized Acura retailer at time of new vehicle delivery). Regular maintenance items and parts are subject to normal wear and replacement, and are not covered by warranty. Certain other items are excluded, and certain conditions apply. See your Acura retailer for complete details.

ACURA PLUS

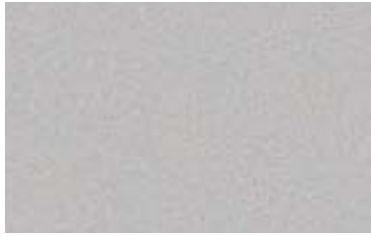
As a new Acura owner, you can help to prolong your worry-free ownership experience by purchasing additional coverage. Just choose from our flexible selection of Mechanical Coverage that extends up to 7 years or 160,000 km, whichever comes first. You can also extend your Roadside Assistance. Ask your Acura retailer for full details.

LEASING AND FINANCING

We offer an array of options to make owning an Acura easy. Ask your Acura retailer for complete details on: Acura Leadership Leasing*, Acura Future Value Financing* and Conventional Financing*.

*A genuine service of Honda Canada Finance Inc. Conditions, restrictions and pre-payment requirements might apply O.A.C. *Acura Future Value Financing* does not apply in the province of Quebec.

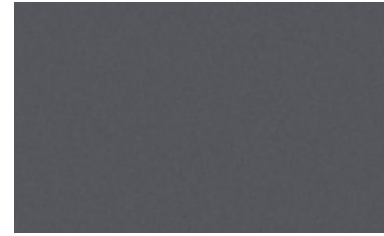
COLOUR AND TRIM



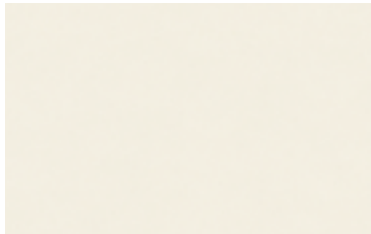
Alabaster Silver Metallic



Nighthawk Black Pearl



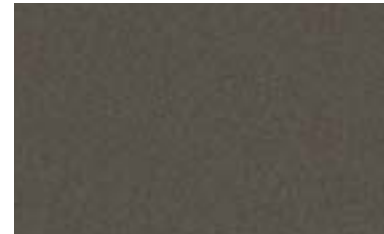
Anthracite Metallic



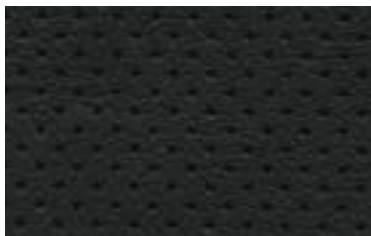
White Diamond Pearl



Royal Blue Pearl



Carbon Bronze Pearl



Black Leather



Camel Leather



Parchment Leather

TL

Exterior



Alabaster Silver Metallic NH-700M	Nighthawk Black Pearl B-92P	Anthracite Metallic NH-643M	White Diamond Pearl NH-603P	Royal Blue Pearl B-536P	Carbon Bronze Pearl YR-562P

Interior

TL						
	Black Leather	Black or Camel Leather	Black Leather	Black or Parchment Leather	Black Leather	Black Leather
TL NAVI						
	Black Leather	Black or Camel Leather	Black Leather	Black or Parchment Leather	Black Leather	Black Leather
TL DYNAMIC					N/A	N/A
	Black Leather	Black Leather	Black Leather	Black Leather	N/A	N/A
TL DYNAMIC NAVI					N/A	N/A
	Black Leather	Black Leather	Black Leather	Black Leather	N/A	N/A

Specifications, features, illustrations and equipment shown in this catalogue are based upon the latest available information at the time of publication. *Remember your seat belts. It's a simple fact of life. Although descriptions are believed to be correct, accuracy cannot be guaranteed. Honda Canada Inc. reserves the right to make changes at any time, without notice or obligation, in colours, specifications, accessories, materials and models. Some vehicles are shown with optional equipment. Some vehicles shown are U.S. models, Canadian specifications may vary. ¹Dynamic Package and Dynamic NAVI Package high performance tires' tread pattern is not designed for winter driving; snow and ice should be avoided. See Acura dealer for details. ²Map database of the Acura Navigation System covers major metropolitan areas in southern Canada and the 48 contiguous U.S. states. For a list of current detailed coverage areas, refer to the Acura website, www.acura.ca. Bose® is a registered trademark of Bose Corporation. HomeLink® is a registered trademark of Johnson Controls Technology Company. ELS Surround™ is a registered trademark of Panasonic Automotive Systems Company of America. Dolby® is a registered trademark of Dolby Laboratories. DTS® is a registered trademark of Digital Theatre Systems, Inc. Grammy® is a registered trademark of the National Academy of Recording Arts & Sciences. Acura, a division of Honda Canada Inc., 715 Milner Avenue, Toronto, Ontario, Canada M1B 2K8. 1-888-9-ACURA-9. www.acura.ca. Acura, TL, Acura Navigation System with Voice Recognition, HandsFreeLink, VSA, VTEC, Drive-by-Wire Throttle System and Sequential SportShift are trademarks of Honda Motor Co. Ltd.

