

The 2006 Honda Civic Coupe / Si



HONDA

A close-up, front-quarter view of a blue Honda car. The car's hood, grille, and headlights are visible. A large, bold red '0.0' is superimposed over the right side of the hood. The background is a blurred, light-colored structure, possibly a building or a track barrier.

From Zero to Salivate:

0.0

A blue car is shown from a front-quarter perspective, driving on a road. The background is blurred to indicate motion. The car's headlights and front grille are visible. A large red number '001' is overlaid on the image.

001

seconds



Grins per Second:

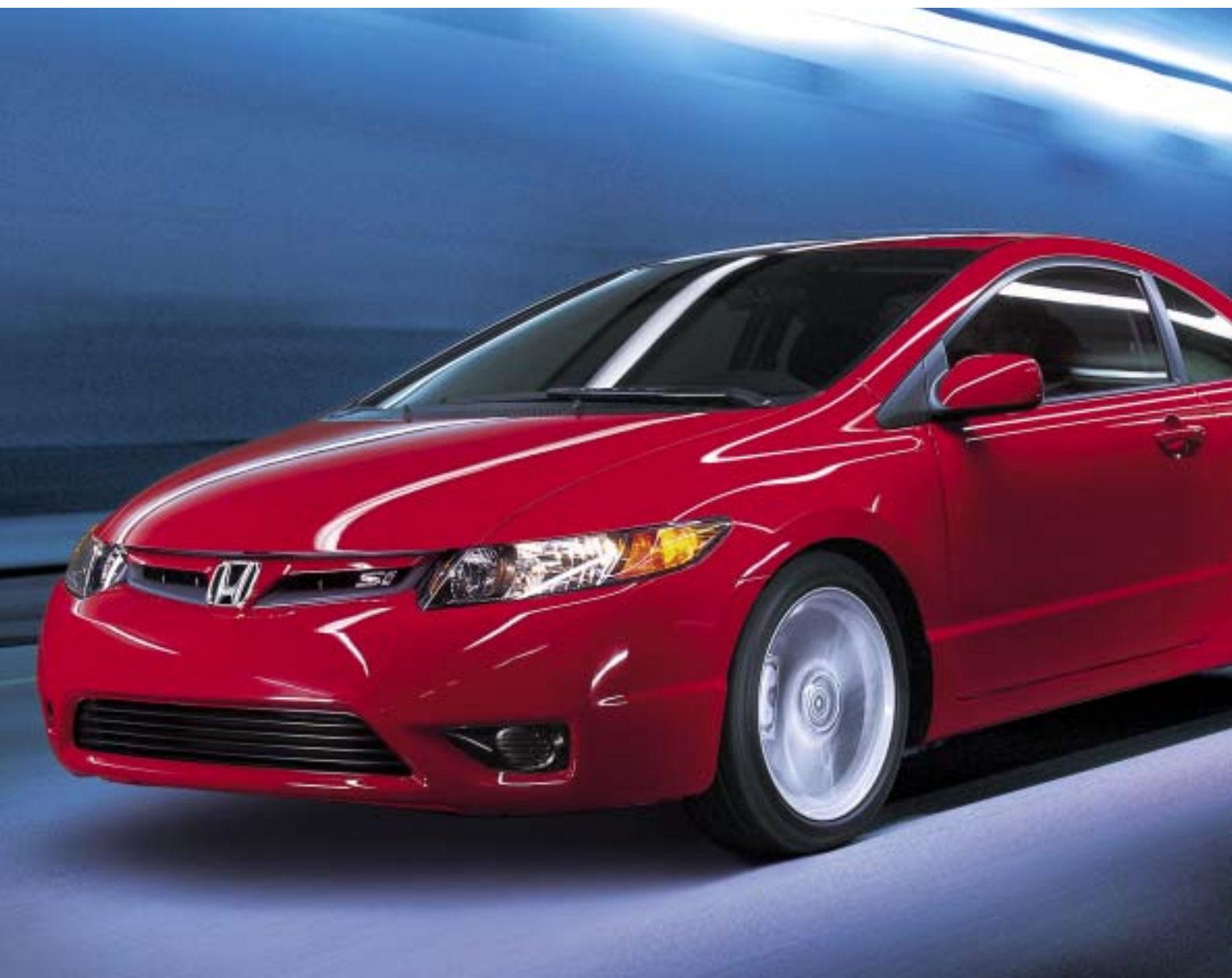
30.4

Tomorrow is Today. Why wait for tomorrow when you can hit fast-forward? That's what it's like slipping inside the all-new 2006 Civic Coupe and Si. Just one look tells you these are more than new. They're the shape of things to come – leading-edge looks backed up with more power, sharper handling and a bigger dose of high tech than you've ever seen in a Civic. Welcome to tomorrow. You're going to like it here.



Civic engines have always been a showcase of Honda engineering. The big news for 2006 is a new 140-hp, 1.8-litre i-VTEC® engine that's standard in all Civic DX, DX-G, LX and EX models. It features the freshest next-generation i-VTEC technology, giving you all the go power you want, with the fuel economy you'd expect from a small engine.

If crisp, short-throw shifting is your thing, the 5-speed manual transmission is sure to satisfy. Or opt for the new compact 5-speed automatic transmission – one of the only in the compact class. For even more driving exhilaration, the 6-speed manual transmission in the Civic Si is your ticket.



Start a Revolution at
8000 rpm

Travel through Life in Style. Pick up your friends. Get to the job. Head out of town. Life is all about movement, and nothing says go like the modern, aerodynamic shape of the all-new Civic Coupe. Sophisticated. Sporty. Futuristic. Many words can describe its sleek silhouette. But it is most clearly defined by the stretches of space it can move you through.



RALLY RED

CIVIC Si



THE 2.0-L ENGINE PACKS 197 HP



*EX model shown.

There's space for five, and you'll all be feeling good thanks to the roomy seating and the available air conditioning. New seat bolsters and a tilt and telescopic steering column let any driver find a perfect fit. EX and Si models add steering wheel-mounted audio system controls and a 60/40 fold-down rear seatback.

The 160-watt AM/FM/CD 4-speaker audio system in DX, DX-G and LX models can play your MP3-compatible or Windows Media® Audio (WMA)-compatible CDs. There's an auxiliary input jack, too*. EX and Si models have a 350-watt audio system with a subwoofer for big bass.

*Available on DX-G models and above.



*Si model shown.



Friends Invited:

04

Interior. Climb into the cockpit and you'll immediately notice the new two-tier instrument panel, displaying information about temperature, speed and fuel that is easy to see. Every detail reflects Honda's attention to ergonomics, making your mission clear: You are here to drive, with eyes forward, both hands on the wheel and right foot on the accelerator.





More Horsepower:

197 hp



Mention just two letters – Si – and you’ve said a mouthful. The Civic that ushered in the modern sport-compact era is all-new, and loaded with all the technology befitting the king of compacts. Check out that ground-hugging stance and try not to grin. Pure i-VTEC power, a sport-tuned suspension – and attitude to spare. If you think you’re ready, come and get it.

The Si's 197-hp capacity is harnessed to a close-ratio 6-speed manual transmission and a limited-slip differential. You'll be ready for spirited moves with a totally re-engineered MacPherson strut front/reactive-link double wishbone rear suspension with firmer spring rates, beefy stabilizer bars and razor-quick Electric Power Steering (EPS). Roll with big standard 17" or optional 18" alloys, while available summer-performance tires tighten your grip on the road.



Honda's 2.0-litre K20 engine is a legend in the sport-compact world. For the new Si, we've taken it to the next level. We added the next generation of i-VTEC, we upped the compression ratio and we included a unique crankshaft balancer for smoother revving up to a stratospheric 8000-rpm redline. That's just some of the science applied to getting the Si near the magical mark of 100 hp per litre of displacement.

i-VTEC uses two different cam profiles, one for low rpm and one for high, to keep power output up across the rev range. And Variable Timing Control™ (VTC™) gives the Si a big boost in both power and economy. Getting the Si's abundant power down to the pavement is a helical-type limited-slip differential. It transmits torque to the wheel with the most traction, for confident acceleration through corners.



*SI model shown.

The 2006 Civic Si is full of features that scream performance, like drilled aluminum pedals and a rev-limit indicator located next to the digital speedometer for eyes-forward fun.



From Stop to Wow:

1.0 second

Serious Attention to Detail. The deep-bolstered, embroidered seats with red stitching welcome serious drivers. And the contoured leather-wrapped steering wheel begs for some hands-on attention. Wield the 6-speed manual transmission with short, quick throws. The close ratios of gears 1 through 6 let you make the most of the Si's ultra-eager powerband.




Standard Safety Features:

- 4-Wheel Anti-Lock Braking System (ABS) with Electronic Brake Distribution (EBD)
- Driver and Front Passenger Dual-Stage, Dual-Threshold Airbags (SRS)
- Side Airbags with Passenger Seat Occupant Position Detection System (OPDS)
- Side Curtain Airbags
- Advanced Compatibility Engineering (ACE) body structure
- Active Head Restraints

Degrees of Protection:

360°

Safety For Everyone. Honda has a long commitment to safety. The idea that safety is for everyone is a company philosophy, not a slogan. Honda seeks to provide the highest level of occupant safety in all of their cars and trucks – regardless of size or price – as well as improving safety for pedestrians. This approach is making a difference as 9 of Honda's 2005 models have earned the U.S. National Highway Traffic Safety Administration's (NHTSA) 5-star frontal impact crash-test rating – the most of any brand.



Racing History. Developing safe cars that also accelerate the art of high performance is something Honda has learned through years of racing. What started in the 1950s with motorcycles quickly branched out to race cars. And while Honda has reached the podium many times, the greatest benefit of this competitive history and hard-won technology is how it prepares Honda engineers to think creatively under pressure. That way, they're always ready for the biggest challenge of all – continuing to satisfy and protect every Honda customer.

ABS with EBD. The Anti-Lock Braking System (ABS) helps you maintain steering control during hard stops. Electronic Brake Distribution™ (EBD™) balances braking forces at each wheel when the car is loaded unevenly.

Side-Impact Protection. High-tensile steel beams in the Civic Coupe's doors help minimize the intrusion of impact energy in a side-impact collision.

Seatbelt Pretensioners. An automatic seatbelt tensioning system helps hold occupants securely in a collision. The system is triggered by the same sensors that deploy the airbags.

Active Head Restraints. In a rear-end collision of sufficient force, the active head restraints move forward and up, to help prevent and/or reduce neck injury.

Front Airbags. Dual-stage, dual-threshold front airbags deploy at one of two rates and thresholds, depending on seatbelt use and the severity of impact.

Side Airbags with OPDS. The front passenger seat features an Occupant Position Detection System™ (OPDS™) to help prevent the side airbag from deploying if a child or small adult is in the airbag's deployment path.

Side Curtain Airbags. To help lessen or prevent head and neck injuries in side-impact collisions, all Civic models now feature side curtain airbags.

ACE Body Structure. Our Advanced Compatibility Engineering™ (ACE™) body structure improves impact compatibility with vehicles of different ride heights. In front-end collisions, ACE helps redirect impact energy around the passenger compartment.

4-Wheel Disc Brakes. Civic EX and Si models are outfitted with 4-wheel disc brakes with ABS. They help provide quick, confident stopping power when you need it.



Honda reminds you and your passengers to always buckle up. Children 12 and under are safest when properly secured in the rear seat.

Choices:

05



Trim Levels, Models & Accessories



Civic DX Coupe

- 140-hp (SAE Net, Rev. 8/04), 1.8-Litre, 16-Valve SOHC i-VTEC® 4-Cylinder Aluminum-Alloy Engine
- Drive-by-Wire Throttle System™ • Control-Link Macpherson Strut Front Suspension • Reactive-Link Double-Wishbone Rear Suspension • Anti-Lock Braking System (ABS) with Electronic Brake Distribution™ (EBD™) • 5-Speed Manual Transmission • Optional 5-Speed Automatic Transmission • Advanced Compatibility Engineering™ (ACE™) Body Structure • Active Head Restraints • High-Power AM/FM/CD Audio System with Anti-Theft, 4 Speakers, MP3/WMA Compatibility and Speed-Sensitive Volume Control • Driver and Front Passenger Dual-Stage, Dual-Threshold Airbags • Power Door Mirrors • Power Windows • Side Airbags with Seat Occupant Position Detection System™ (OPDS™) • Side Curtain Airbags • Side-Impact Door Beams • Tilt and Telescopic Steering Column • Trunk Lip Spoiler • Two-Tier Instrument Panel

Civic DX-G Coupe Adds to or replaces DX features:

- Air Conditioning with Micron Air Filtration System, Defrost Link and Fresh Air • Centre Console with Armrest and Storage Compartment • Keyless Remote Entry • Power Door Locks with Customizable Auto-Lock • Auxiliary Media Input Jack



Civic LX Coupe Adds to or replaces DX-G features:

- 16-Inch Alloy Wheels • 60/40 Split Fold-Down Rear Seatback • Body-Coloured Door Handles and Mirrors • Cruise Control with Steering Wheel-Mounted Controls • Front Map Light • Heated Power Door Mirrors • Outside Temperature Display • Passenger Seat Walk-In with Memory • Variable Intermittent Wipers

Civic EX Coupe Adds to or replaces LX features:

- 4-Wheel Disc Brakes • 12-Volt Accessory Sockets (2) • Ambient Lighting • Power Moonroof with Privacy Glass and Auto-Open • Premium High-Power AM/FM/CD Audio System (MP3/WMA Compatible) with 7 Speakers, Including Subwoofer • Round Chrome Exhaust Finisher • Steering Wheel-Mounted Audio System Controls



Civic Si Coupe Adds to or replaces EX features:

- 197-hp, (SAE Net, Rev. 8/04), 2.0-Litre, 16-Valve DOHC i-VTEC® 4-Cylinder Aluminum-Alloy Engine
- 6-Speed Manual Transmission • 17" Alloy Wheels • Drilled Aluminum Pedal Pads • Electric Power Steering
- Helical-Type Limited-Slip Differential • Leather-Wrapped Steering Wheel • Oval Chrome Exhaust Finisher
- Rev Limit Indicator • Sport Seats with "Si" Embroidery and Red Stitching • Sport-Tuned Suspension
- Trunk-Mounted Wing Spoiler • Leather-Wrapped Shift Knob • "Si" Badging

Accessories

- 16-, 17- or 18-Inch Alloy Wheels • Cargo Net • Rear Splash Guards • Round Chrome Tailpipe Finisher • Security Alarm, and More

ALABASTER SILVER METALLIC

NIGHTHAWK BLACK PEARL

GALAXY GREY METALLIC

NEUTRON BLUE METALLIC



RALLYE RED

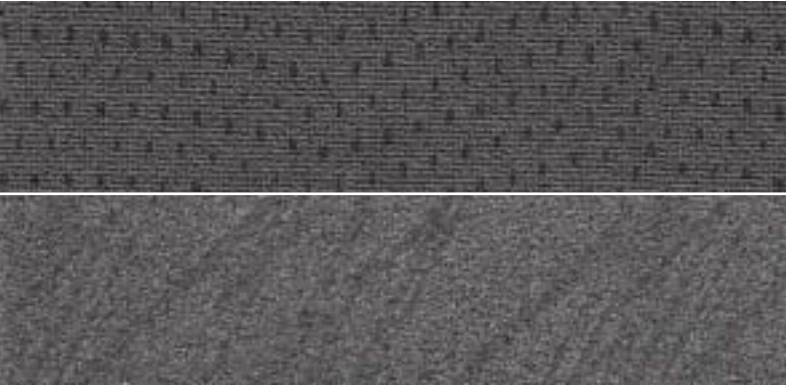
ROYAL BLUE PEARL

FIJI BLUE PEARL (Si)

HABANERO RED PEARL (Si)

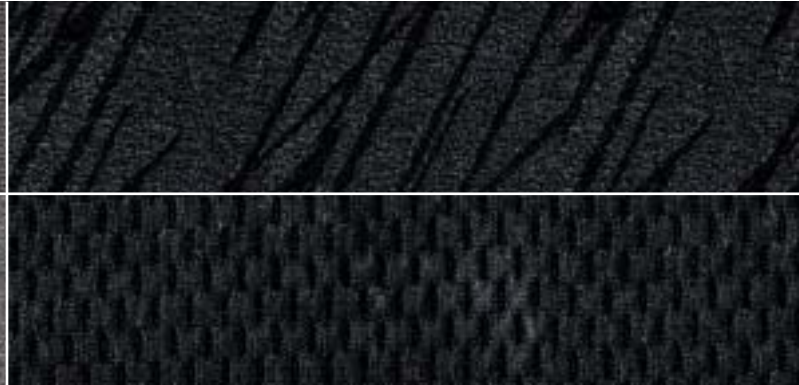
Interior & Exterior Colours

GREY FABRIC (DX/DX-G)



GREY FABRIC (LX)

BLACK FABRIC (EX)



BLACK FABRIC (Si)

Exterior/Interior Colours	DX / DX-G	LX	EX	Si
Alabaster Silver Metallic	Grey Fabric	Grey Fabric	Black Fabric	Black Fabric
Nighthawk Black Pearl	Grey Fabric	Grey Fabric	Black Fabric	Black Fabric
Galaxy Grey Metallic	Grey Fabric	Grey Fabric	Black Fabric	Black Fabric
Neutron Blue Metallic	Grey Fabric	Grey Fabric	Black Fabric	
Rallye Red	Grey Fabric	Grey Fabric	Black Fabric	Black Fabric
Royal Blue Pearl	Grey Fabric	Grey Fabric	Black Fabric	
Fiji Blue Pearl				Black Fabric
Habanero Red Pearl				Black Fabric

Specifications & Features

Engine	DX	DX-G	LX	EX	Si
Type: 1.8 Litre In-Line 4-Cylinder Aluminum-Alloy	•	•	•	•	
Type: 2.0-Litre, In-Line 4-Cylinder Aluminum-Alloy					•
Displacement (cc)	1799	1799	1799	1799	1998
Horsepower @ rpm (SAE net Rev 8/04) °	140 @ 6300	140 @ 6300	140 @ 6300	140 @ 6300	197 @ 7800
Torque (lbs-ft @ rpm) °	128 @ 4300	128 @ 4300	128 @ 4300	128 @ 4300	139 @ 6200
Compression Ratio	10.5:1	10.5:1	10.5:1	10.5:1	11.0:1
Valvetrain: SOHC 16-Valve with i-VTEC®	•	•	•	•	
DOHC 16-Valve with i-VTEC®					•
Fuel System: Programmed Multi-Point Fuel Injection (PGM-FI)	•	•	•	•	•
Direct Electronic Ignition System	•	•	•	•	•

° Horsepower and torque calculations reflect new SAE J1349 procedures, revised August 2004.

Drivetrain

Type: Front-Wheel Drive	•	•	•	•	•
Manual Transmission: 5-Speed	•	•	•	•	
Manual Transmission: 6-Speed					•
Automatic Transmission: Electronically-Controlled 5-Speed with Lock-Up Torque Converter and Grade Logic Control	Optional	Optional	Optional	Optional	
Drive-by-Wire Throttle System™	•	•	•	•	•
Helical-Type Limited-Slip Differential					•

Body / Suspension / Chassis

Body Type: Unibody	•	•	•	•	•
Front Suspension: Control-Link MacPherson Strut	•	•	•	•	Sport-Tuned
Front and Rear Stabilizer Bars	•	•	•	•	•
Rear Suspension: Reactive-Link Double-Wishbone	•	•	•	•	Sport-Tuned
Steering Type: Variable Power-Assisted Rack-and-Pinion	•	•	•	•	
Steering Type: Electric Power Steering					•
Brakes: Power-Assisted Front Ventilated Disc / Rear Drum	•	•	•		
Brakes: Power-Assisted Front Ventilated Disc / Solid Rear Disc				•	•
Wheels	15" Steel with Covers	15" Steel with Covers	16" Alloy	16" Alloy	17" Alloy
Tires: All-Season Radials (M&S)	P195/65 R15	P195/65 R15	P205/55 R16	P205/55 R16	P215/45 R17

Exterior / Interior Dimensions

Wheelbase (mm)	2650	2650	2650	2650	2650
Length (mm)	4440	4440	4440	4440	4440
Width (mm)	1751	1751	1751	1751	1751
Height (mm)	1396	1396	1396	1396	1396
Track (mm) – Front / Rear	1499 / 1526	1499 / 1526	1499 / 1526	1499 / 1526	1499 / 1526
Curb Weight (kg) – M.T. / A.T.	1178 / 1205	1189 / 1216	1206 / 1233	1227 / 1254	1307
Front / Rear Dimensions (mm)					
– Headroom	965 / 890	965 / 890	965 / 890	959 / 880	959 / 880
– Legroom	1083 / 770	1083 / 770	1083 / 770	1083 / 770	1083 / 770
– Hiproom	1346 / 1248	1346 / 1248	1346 / 1248	1346 / 1248	1346 / 1248
Cargo Volume (L)	325	325	325	325	325
Passenger Volume (L)	2370	2370	2370	2370	2370
Fuel Capacity (L)	50	50	50	50	50
Fuel Consumption,* City / Highway (L/100 km)					
– M.T.	7.8 / 5.7	7.8 / 5.7	7.8 / 5.7	7.8 / 5.7	10.7 / 7.6
– A.T.	8.2 / 5.7	8.2 / 5.7	8.2 / 5.7	8.2 / 5.7	

*Fuel consumption (regular unleaded) for comparison purposes only. See Dealer for latest 2006 EnerGuide published by NRCAn (when available).

Exterior Features	DX	DX-G	LX	EX	Si
Body-Coloured Door Handles			•	•	•
Chrome Exhaust Finisher				Round	Oval
Front Intermittent Wipers	•	•	Variable	Variable	Variable
Front Splash Guards	•	•		•	•
Power Door Mirrors	Black	Black	Body-Coloured, Heated	Body-Coloured, Heated	Body-Coloured, Heated
Power Moonroof with Privacy Glass and Auto-Open				•	•
Rear Window Defroster with Timer	•	•	•	•	•
Trunk-Mounted Spoiler	Lip	Lip	Lip	Lip	Wing

Interior Features

Accessory Socket	1	1	1	2	2
Adjustable Steering Column (Tilt and Telescopic)	•	•	•	•	•
Air Conditioning (CFC Free) with Defrost Link and Fresh Air		•	•	•	•
Audio Anti-Theft	•	•	•	•	•
Automatic Door Lock (Customizable Settings)		•	•	•	•
Auxiliary Media Input Jack		•	•	•	•
Beverage Holders, Front and Rear	•	•	•	•	•
Centre Console Storage Compartment	•	with Armrest	with Armrest	with Armrest	with Armrest
Cruise Control with Steering Wheel-Mounted Controls			•	•	•
Customizable "Welcome" Screen	•	•	•	•	•
Drilled Aluminum Pedal Pads					•
Driver's Seat Height Adjustment	•	•	•	•	•
Dual Front Vanity Mirrors	•	•	•	•	•
Fold-Down Rear Seatback	•	•	60/40 Split	60/40 Split	60/40 Split
Front Map Light			•	•	•
High-Power 160-watt AM/FM/CD Audio System (MP3/WMA-Compatible)	•	•	•	•	•
Interior Illumination Colour	Blue	Blue	Blue	Blue	Red
Keyless Remote Entry with Panic Alarm Feature		•	•	•	•
Leather-Wrapped Shift Knob					•
Leather-Wrapped Steering Wheel					•
Maintenance Minder	•	•	•	•	•
Micron Air Filtration System		•	•	•	•
Outside Temperature Display			•	•	•
Power Door Locks		•	•	•	•
Power Windows	•	•	with Driver's Auto Up/Down and Anti-Pinch	with Driver's Auto Up/Down and Anti-Pinch	with Driver's Auto Up/Down and Anti-Pinch
Premium High-Power 350-watt AM/FM/CD Audio System (MP3/WMA-Compatible)				•	•
Rear Headrests (3)	•	•	•	•	•
Remote Trunk Release and Remote Fuel Lid Release	•	•	•	•	•
Rev-Limit Indicator					•
Speakers	4	4	4	7 (including Subwoofer)	7 (including Subwoofer)
Speed-Sensitive Volume Control (Customizable)	•	•	•	•	•
Sport Seats (Embroidered)					•
Steering Wheel-Mounted Audio System Controls				•	•
Tachometer	•	•	•	•	•
Two-Tier Instrument Panel	•	•	•	•	•

Safety

3-Point Seatbelts in All Positions	•	•	•	•	•
4-Wheel Anti-Lock Braking System (ABS) with Electronic Brake Distribution™ (EBD™)	•	•	•	•	•
Active Head Restraints	•	•	•	•	•
Driver and Front Passenger Dual-Stage, Dual-Threshold Airbags (SRS)	•	•	•	•	•
Driver and Front Passenger Side Airbags with Passenger Seat Occupant Position Detection System™ (OPDS™)	•	•	•	•	•
ECU Immobilizer System	•	•	•	•	•
Front Passenger and Rear Seatbelts with Automatic Locking Retractor (ALR) and Emergency Locking Retractor (ELR)	•	•	•	•	•
Front Seatbelt Pretensioners	•	•	•	•	•
LATCH Child Safety Seat Anchors	•	•	•	•	•
Side Curtain Airbags	•	•	•	•	•



At Honda, assistance and support are always available. The team of trained technicians at your Honda dealership will keep your vehicle in terrific shape. Honda accessories installed at the time your vehicle is purchased are covered under the 3-year/60,000-km limited warranty. If you need more information or assistance, call us at 1-888-9-HONDA-9. For all of the latest Honda information, including product specifications, pricing, photos and more, visit [Honda.ca](http://www.honda.ca). It has everything you need to “design” your Honda and personalize it with items from a list of quality accessories.

We're Here

Quality Honda Accessories give you the opportunity to fine-tune your new Civic just how you like it. Whether you want to turn up the style, the versatility or the exclusivity, every accessory is designed and built to adhere to the strictest Honda standards. See your dealer for full details.

Genuine Honda Replacement Parts are made to the same exacting standards as original Honda components and are guaranteed by the Genuine Honda Parts Warranty.

Make the grade with Honda. If you're a recent university or college graduate, you may be eligible for an allowance of up to \$750 on certain Honda models. To learn more about the Graduate Program, see your participating Honda dealer.

Honda Canada Finance Inc. Whether you buy or lease a Honda, Honda Canada Finance Inc. can assist you with the process. Ask your dealer which lease or purchase plan best suits your needs.

We're ready to help. When you purchase a 2006 Honda, you automatically receive Honda Plus Roadside Assistance. This service is available to you or anyone else driving your vehicle 24 hours a day, 7 days a week, anywhere in Canada or the U.S. Coverage is for 3 years, unlimited distance and includes towing, battery boost, lock-out assistance plus many other helpful services. Ask your dealer for more information.



HONDA

Get the latest photos, MSRPs, features, specs and more at www.honda.ca

© 2005 Honda Canada Inc., 715 Milner Avenue, Toronto, Ontario, Canada M1B 2K8

Specifications, features, illustrations and equipment shown in this catalogue are based on the latest available information at the time of publication. Although descriptions are believed to be correct, accuracy cannot be guaranteed. Honda Canada Inc. reserves the right to make changes at any time, without notice or obligation, in colours, specifications, accessories, materials and models. Some vehicles are shown with optional equipment. Windows Media Audio (WMA) is a registered trademark of Microsoft® Corporation. Civic, i-VTEC, Electronic Brake Distribution (EBD), Occupant Position Detection System (OPDS), Advanced Compatibility Engineering (ACE) and Drive-by-Wire Throttle System are trademarks of Honda Motor Co. Ltd.

Printed In Canada. 10/05  Elemental chlorine-free 10% post-consumer recovered fibre.

7556B011E