



## Interior & Exterior Colours



Exterior/Interior Colours	LX	EX	EX with Leather	EX with Leather / RES	Touring
Desert Rock Metallic	Ivory Fabric	Ivory Fabric	Ivory Leather	Ivory Leather	Ivory Leather
Silver Pearl Metallic	Grey Fabric	Grey Fabric	Grey Leather	Grey Leather	Black Leather
Red Rock Pearl	Ivory Fabric	Ivory Fabric			
Ocean Mist Metallic	Grey Fabric	Grey Fabric	Grey Leather	Grey Leather	Grey Leather
Slate Grey Pearl		Olive Fabric	Olive Leather		
Nighthawk Black Pearl			Grey Leather	Grey Leather	Black Leather
Midnight Blue Pearl			Grey Leather	Grey Leather	Grey Leather



At Honda, assistance and support are always available. The team of trained technicians at your Honda dealership will keep your vehicle in terrific shape. Honda accessories installed at the time your vehicle is purchased are covered under the 3-year/60,000-km limited warranty. If you need more information or assistance, call us at 1-888-9-HONDA-9. For all of the latest Honda information, including product specifications, pricing, photos and more, visit [Honda.ca](http://www.honda.ca/). It has everything you need to “design” your Honda and personalize it with items from a list of quality accessories.

## We’re Here

**Quality Honda Accessories** give you the opportunity to fine-tune your new Odyssey just how you like it. Whether you want to turn up the style, the versatility or the exclusivity, every accessory is designed and built to adhere to the strictest Honda standards. See your dealer for full details.

**Genuine Honda Replacement Parts** are made to the same exacting standards as original Honda components and are guaranteed by the Genuine Honda Parts Warranty.

**Make the grade with Honda.** If you’re a recent university or college graduate, you may be eligible for an allowance of up to \$750 on certain Honda models. To learn more about the Graduate Program, see your participating Honda dealer.

**Honda Canada Finance Inc.** Whether you buy or lease a Honda, Honda Canada Finance Inc. can assist you with the process. Ask your dealer which lease or purchase plan best suits your needs.

**We’re ready to help.** When you purchase a 2006 Honda, you automatically receive Honda Plus Roadside Assistance. This service is available to you or anyone else driving your vehicle 24 hours a day, 7 days a week, anywhere in Canada or the U.S. Coverage is for 3 years, unlimited distance and includes towing, battery boost, lock-out assistance plus many other helpful services. Ask your dealer for more information.



Get the latest photos, MSRPs, features, specs and more at [www.honda.ca](http://www.honda.ca)

© 2005 Honda Canada Inc., 715 Milner Avenue, Toronto, Ontario, Canada M1B 2K8

Specifications, features, illustrations and equipment shown in this catalogue are based on the latest available information at the time of publication. Although descriptions are believed to be correct, accuracy cannot be guaranteed. Honda Canada Inc. reserves the right to make changes at any time, without notice or obligation, in colours, specifications, accessories, materials and models. Some vehicles are shown with optional equipment. HomeLink is a registered trademark of Prince Corporation, a Division of Johnson Controls. Odyssey, Advanced Compatibility Engineering (ACE), PlusOne Seat, Magic Seat, Drive-by-Wire Throttle System, Variable Cylinder Management (VCM), Active Noise Cancellation (ANC), VTEC, i-VTEC, Vehicle Stability Assist (VSA), Electronic Brake Distribution (EBD) and Occupant Position Detection System (OPDS) are trademarks of Honda Motor Co. Ltd.





Leave behind the traditional.  
Explore new spaces. Spend  
quality time. Start your  
adventure. Go.







# Go to Practice.

**Safety, Utility, Function.** We are always thinking of new ways to make the Odyssey more practice-friendly. And it's this thinking that led to many of the improvements that set the Odyssey apart. Improvements like Honda's Advanced Compatibility Engineering™ (ACE™) body structure to help keep the kids safe on their way to the game, and dual sliding doors to make getting in and out a breeze for both players and their fans. Not to mention an available Honda DVD Rear Entertainment System, which makes travelling with a group of overexcited kids a little more manageable.



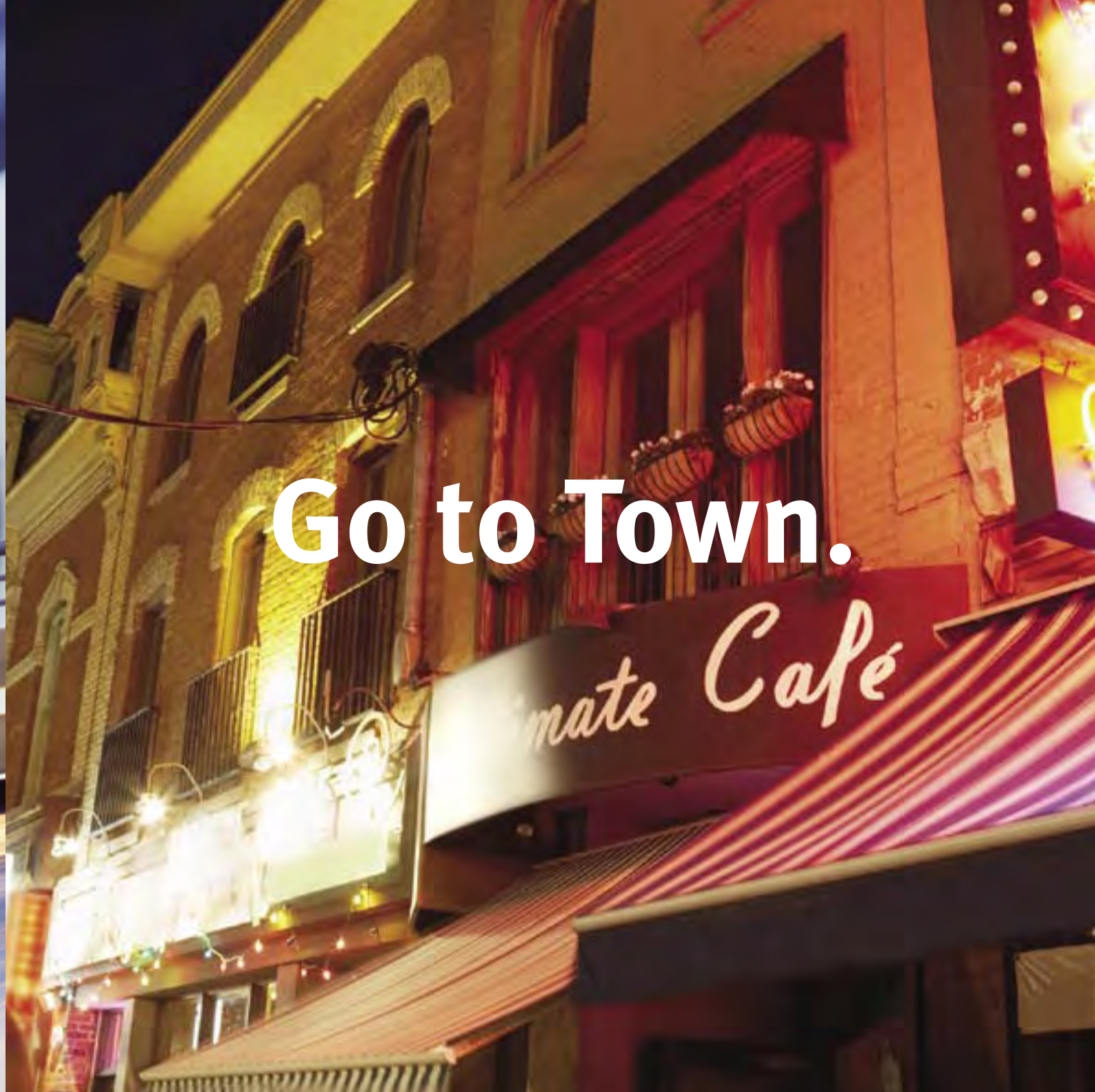
# Go Camping.



**Storage, Great Drive, Built For Fun.** If you're looking to spend more quality time with your family, take a look at the Honda Odyssey. Tents, sleeping bags, fishing poles, dogs and kids take up a lot of room, but the Odyssey is up to the challenge. When designing the interior, we focused on function as well as comfort. Highly configurable seating arrangements, a unique in-floor Lazy Susan\* rotating storage tray and an exclusive second row centre console† are just a few of the creative features incorporated to maximize space. So pack up the kids and all your gear, and head out for the open road.

\* Available on EX, EX with Leather, EX with Leather/RES and Touring models.  
† Available on Touring models.





# Go to Town.

Go as a Couple

**Design, Comfort, Style.** With the family taken care of, it's time to focus a little attention on yourself. Head out for dinner, take in a show, or simply find an excuse to go for a leisurely evening drive. Wherever it is you decide to go, you know you'll be arriving in style, courtesy of the Odyssey's sleek look and impressive design. And getting there won't be a problem either, thanks to the Honda Navigation System with Bilingual Voice Recognition.\* The flip-down touch screen gives you access to over 8 gigabytes of maps and 7 million points of interest, including the hottest restaurants and the coolest lounges.

\*Available on Touring models.

It's great being a mom or dad. Especially when you're in the front seat of a Honda Odyssey. It's loaded with a whole bunch of smart design improvements. To start, there is an easy-to-reach yet out-of-the-way dash-mounted shifter. There are heated leather front seats for chilly mornings.\* Plus, to help the driver get comfortable, there is an adjustable steering column and an 8-way power seat.† Finally, there are many driver-focused features, like the Odyssey's steering wheel-mounted cruise and audio system controls,‡ and the Honda Navigation System with Bilingual Voice Recognition (available on Touring models) – all designed to help you keep your hands on the wheel and your eyes on the road.

\*Available on EX with leather models and above. †Available on EX models and above.





# Go as a Family.



Touring model shown.

The Odyssey's huge capacity makes it a better utility vehicle than many SUVs. The EX models seat up to eight people, and the rear seats can be reconfigured to carry loads of luggage, camping gear, or whatever else the day's agenda demands. On Touring models, a power tailgate gives you access to 4174 litres of cargo room with the

second row seats removed. Inside the Odyssey your passengers enjoy luxurious seating that is highly configurable, thanks to a stowable second row PlusOne Seat™.\* Remove it and you create some extra space between the two deeply padded, full-size second row seats.

\*Available on all EX models.





PULL OUT THE PLUSONE SEAT CUSHION



GIVE THE SECOND ROW A TRAY



OR FOLD IT UP TO MAKE SPACE

## The Possibilities are Endless

The Odyssey offers a variety of passenger and cargo possibilities. When you're ready to reconfigure, the Odyssey meets the challenge in many ways. For starters, EX models let you move the handy PlusOne Seat to the storage area in the floor. The second row centre console in Touring models can be removed for extra space.

An 8-way power adjustable driver's seat\* makes chauffeur duty a joy. Touring models also have a memory feature that can accommodate favourite settings for two drivers. The removable second row seats can push together, pull apart and slide up for easy third row access. A 60/40 split third row Magic Seat® folds flat into the floor in one motion to expand the cargo area – without removing the head restraints.

\*Available on EX models and above.



IT'S THERE WHEN YOU NEED IT



THE IN-FLOOR STORAGE AREA IS FLEXIBLE



KEEP VALUABLES OUT OF SIGHT

The Odyssey puts a fresh spin on space. Most models come with an ingenious Lazy Susan rotating storage tray hidden in the floor. Stow a variety of kids' games, dog toys, work stuff or play stuff. It's large enough to hold lots of things, keeping

them organized, out of the way and easily accessible. For a single larger storage area, remove the Lazy Susan altogether. The cover can be locked, making it a great place to keep your valuables out of sight.







LILO & STITCH 2 AVAILABLE NOW ON DVD

## Go Anywhere in Comfort

Whether it's a family road trip or a dash to the grocery store, you'll be comfortable in the Honda Odyssey. Focusing on physical comfort, our engineers set out to create an innovative driving environment that's high on luxury, as well as smart design principles, to enhance all your travels. Here are a few more amenities that will make any trip more enjoyable.

↑ The available Global Positioning System (GPS) satellites pinpoint your location virtually anywhere in North America. Enter a destination, and you're guided there with clear directions and voice prompts.\* The Honda Navigation System with Bilingual Voice Recognition responds to more than 750 commands, like "find the nearest gas station." You can even use it to control the audio and climate systems.

↑ The available Honda DVD Rear Entertainment System with separate front and rear audio sources lets both front and rear passengers choose what they want to listen to. It boasts an impressive 9-inch screen, and its control panel faceplate detaches and becomes a remote control. Also included are 2 lightweight wireless headphones featuring Personal Surround Sound. You can even plug in a video game system using the rear audio/video inputs.



↑ Standard on LX models is a 120-watt AM/FM/CD system with 4 speakers, and EX models add 2 more speakers and a 6-disc in-dash CD changer. Touring models offer a 360-watt premium audio system with 7 speakers, including a subwoofer.

↑ For a fresh perspective, slide back the Odyssey's large power moonroof (on models with leather interior).

↑ The Touring model's power adjustable gas and brake pedals help ensure the right fit.

↑ The clever conversation mirror (EX and Touring models) allows easy viewing of the cabin without turning your head. It also serves as a flip-down sunglasses holder.

↑ Getting in and out of the Odyssey is easy thanks to dual sliding doors that feature the comfort and convenience of power second row windows. Built-in sunshades on most models help protect against unwanted glare.

↑ The Odyssey offers you dual glove compartments for more storage, so there's always room for your stuff.





The Odyssey performs like it doesn't even know it's a minivan. With a 244-hp engine, the Odyssey moves with an eagerness that belies its big frame. But power does not come at the expense of efficiency, economy and low emissions. When the road curves, you'll enjoy responsive handling that mirrors some of today's best luxury sedans.

## Stand-Out Performance

The Odyssey is the sports car of minivans. At its heart is a potent 3.5-litre V6 engine. For smoother delivery it utilizes a Drive-by-Wire Throttle System™. The 5-speed automatic transmission offers enhanced acceleration as well as fuel economy. To keep this power stuck to the road, there is rack-and-pinion steering, 4-wheel independent suspension with double wishbones in the rear and powerful disc brakes on all 4 wheels.

A drive in the 2006 Odyssey is just as refined as it is inspiring. A rubber-isolated rear subframe provides a smoother, quieter ride. Sleek aerodynamics decrease wind noise. Odyssey models with Variable Cylinder Management™ (VCM®) technology are also equipped with an electronic Active Noise Cancellation™ (ANC™) system that helps further reduce engine noise within the passenger cabin.



## VCM Efficiency

As the world's largest manufacturer of engines, Honda's technology blends high performance with durability and efficiency. The power plant specially developed for the Odyssey produces up to 244 hp and 240 lbs-ft of torque for quick, confident passing and a 1,588-kilogram towing capacity. You also get great fuel economy, an ultra-low emission vehicle, a Tier2 Bin5 rating, and a 170,000-kilometre tune-up interval. In fact, Odyssey was named one of the Most Efficient Vehicles for 2005 by The Office of Energy Efficiency of Natural Resources Canada, further highlighting how Honda continues to deliver an incredibly fuel-efficient lineup of cars and trucks.

Smaller engines use less fuel. That's the idea behind Honda's VCM system – the brains directing the 3.5-litre i-VTEC® engine (standard on models with leather interior).

Powered by the intelligence of i-VTEC technology, VCM quickly and seamlessly activates or deactivates the three rear cylinders, depending on the driver's demands. You get the best of both worlds: V6 power when you're accelerating or climbing, and the efficiency of a smaller engine while cruising.

When you cruise under light engine loads, the intake and exhaust valves remain closed, while fuel injection is paused. This can help deliver a Natural Resources Canada highway fuel consumption rating of 7.7 L/100 km. With the Odyssey's 80-litre fuel capacity, that makes for a long way between stops.

VCM works without the driver even noticing it's there. When accelerating, all six cylinders of the 3.5-litre V6 engine are firing, providing all the exhilaration of 244-hp and 240 lbs-ft of torque. Trademark Odyssey performance – for brisk highway passing or strong towing – is never compromised.





#### Standard Safety Features:

- 4-Wheel Anti-Lock Braking System (ABS) with Electronic Brake Distribution™ (EBD™)
- Dual Front Airbags (SRS) – Dual-Stage
- Dual Side Airbags (SRS) with Passenger Seat Occupant Position Detection System™ (OPDS™)
- Three Row Side Curtain Airbags
- Vehicle Stability Assist (VSA) with Traction Control System (TCS)



**Solid Frame Structure.** Front and rear crumple zones deform in a controlled manner to help absorb impact energy before it has a chance to intrude into the passenger cabin. Further protection for the occupants is enhanced with a rigid safety cell that is reinforced with high-tensile steel and numerous cross braces to help stop cabin deformation.

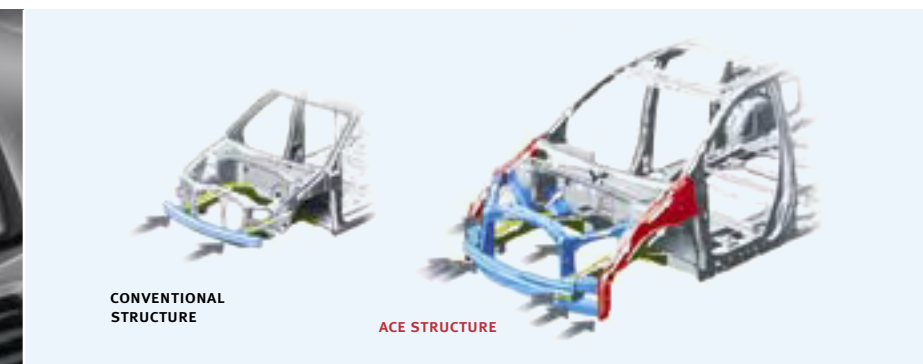
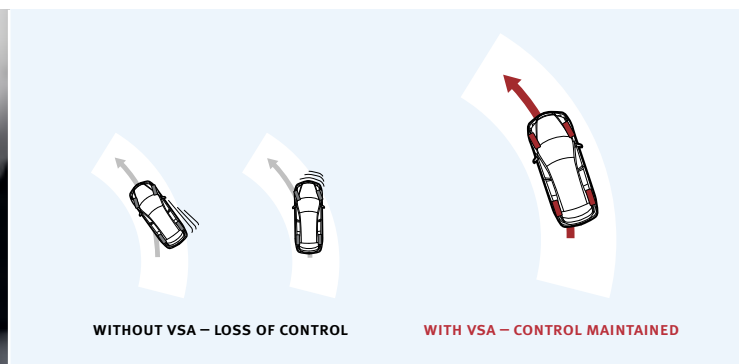
Honda reminds you and your passengers to always buckle up. Children 12 and under are safest when properly secured in the rear seat.

## Solidly Built

**Safety For Everyone.** Honda has a long commitment to safety. The idea that safety is for everyone is a company philosophy, not a slogan. Honda seeks to provide the highest level of occupant safety in all of their cars and trucks – regardless of size or price – as well as improving safety for pedestrians. This approach is making a difference as 9 of Honda's 2005 models have earned the U.S. National Highway Traffic Safety Administration's (NHTSA) 5-star frontal impact crash-test rating – the most of any brand.

The Odyssey showcases the latest innovations designed to give drivers an extra degree of protection and peace of mind. They include an Anti-Lock Braking System (ABS) with Brake Assist, the Vehicle Stability Assist™ (VSA®) system, 3-point seat belts at all positions, and the Lower Anchors and Tethers for Children (LATCH) system for easy installation

of compatible child seats. With the exceptional structural rigidity and sophisticated engineering of the ACE body structure, as well as its long list of passive and active safety features, the Odyssey helps drivers face an uncertain world with greater confidence.



↑ Front airbags, front side airbags and three row side curtain airbags with a rollover sensor are standard on all Odyssey models. The dual-stage, dual-threshold front airbags deploy at one of two rates and thresholds depending on seat belt use and the severity of impact. The Occupant Position Detection System (OPDS) helps prevent deployment of the passenger's side airbag if a child or small adult is in the airbag's deployment path.

↑ Every 2006 Odyssey features Honda's sophisticated Vehicle Stability Assist (VSA) system. Working with the Anti-Lock Braking System and electronic throttle control, VSA enhances stability by detecting oversteer or understeer, and braking individual wheels and/or reducing throttle to help restore the driver's intended travel path.

↑ The Touring model is equipped with a navigation system and a screen that doubles as a display for the innovative, full-colour rear view camera. Shift into reverse, and the display offers a clear view of the area immediately behind the vehicle. Parking sensors on Touring models also help keep drivers more aware of their surroundings.

↑ Honda's Advanced Compatibility Engineering (ACE) body structure incorporates a front-end frame structure that absorbs and disperses impact energy over a large area. ACE increases the Odyssey's passenger protection and its crash compatibility with vehicles of differing ride heights.



The Power of Dreams.

On a September day in 1946, Soichiro Honda visited the home of a friend where he came across a small generator engine designed for a wireless radio. In a moment of inspiration, he turned to his friend and said, “Let’s use this to power a bicycle.”



Say “hello” to ASIMO, the world’s most advanced humanoid robot.



Honda’s advanced crash test facility in Tochigi, Japan.



The ultimate in clean performance.



Racing helps us prove our innovations.



The jet, reinvented.

From this engine-powered bicycle, Honda has grown into a company that moves people in every conceivable way: motorcycles, automobiles, trucks, marine engines, hybrid vehicles, a jet, a fuel cell car and even a robot that will walk and run to assist those who can’t. And each innovation begins with the same dream Mr. Honda had when he found that engine; the dream of bringing the joy of mobility to people.

Honda never stops dreaming. We dreamed of “Safety for Everyone” because everyone has the right to safety, no matter how much they pay for their vehicle. The result: 9 of

Honda’s 2005 models are awarded the U.S. National Highway Traffic Safety Administration’s (NHTSA) 5-star frontal impact crash-test rating, the most of any brand.

We dreamed of making products that are friendlier to the environment, so this year we introduced FCX, a fuel cell car that will soon be available to the public.

As long as people have places to go, Honda will invent new ways to get them there. And while today Honda makes some of the most powerful engines in the world, we will always think of Mr. Honda’s first motorized bicycle, and remember the greatest power is the power of a dream.

Trim Levels, Models & Accessories

Odyssey LX

- 244-hp, 3.5-litre, 24-Valve SOHC VTEC® V6 Engine • 5-Speed Automatic Transmission • 4-Wheel Anti-Lock Braking System (ABS) with Electronic Brake Distribution™ (EBD™) and Brake Assist • Drive-by-Wire Throttle System™ • Vehicle Stability Assist™ (VSA®) with Traction Control System (TCS) • 4-Wheel Independent Suspension • Advanced Compatibility Engineering™ (ACE™) Body Structure • Front, Side and Side Curtain Airbags with Rollover Sensor • 120-Watt AM/FM/CD Audio System with 4 Speakers • Power Windows (1st and 2nd Row) • 15 Beverage Holders • In-Floor Storage (2nd Row) • One-Motion 60/40 Split 3rd Row Magic Seat® • Air Conditioning (CFC-Free) with Front/Rear Controls • Keyless Remote Entry • Dual Sliding Doors

Odyssey EX

Adds to or replaces LX features:

- Dual Power Sliding Doors • 120-Watt AM/FM/6-Disc In-Dash CD Changer Audio System with 6 Speakers • Tri-Zone Climate Control (Automatic Dual Front, Manual Rear) and Micron Air Filtration System • HomeLink® Remote System • Conversation Mirror with Sunglasses Holder • Steering Wheel-Mounted Audio Controls • Driver’s Seat with Adjustable Lumbar Support and 8-Way Power Adjustment • Stowable 2nd Row PlusOne Seat™ • Integrated Sunshades (2nd Row) • In-Floor Storage with Lazy Susan (2nd Row) • 7-Spoke Alloy Wheels • Roof Side Rails • Personal Light with Delay • Seatback Pockets (1st and 2nd Row) • Exterior Temperature Indicator

The Honda Odyssey was awarded the 2005 “Canadian Truck of the Year” by the Automobile Journalists Association of Canada (AJAC).



Specifications, features, illustrations and equipment shown in this catalogue are based on the latest available information at the time of publication. Although descriptions are believed to be correct, accuracy cannot be guaranteed. Honda Canada Inc. reserves the right to make changes at any time, without notice or obligation, in colours, specifications, accessories, materials and models. Some vehicles are shown with optional equipment.

Odyssey EX with Leather

Adds to or replaces EX features:

- 244-hp, 3.5- litre, 24-Valve SOHC i-VTEC® V6 Engine • Active Noise Cancellation™ (ANC™) • Leather-Wrapped Steering Wheel and Shift Knob • Variable Cylinder Management™ (VCM®) • Power Moonroof • Leather-Trimmed Interior • Heated Front Seats • 5-Spoke Alloy Wheels

Odyssey EX with Leather / RES

Adds to or replaces EX with Leather features:

- Honda DVD Rear Entertainment System: includes 9" Flip-Down Screen, Wireless Headphones and Remote Control

Odyssey Touring

Adds to or replaces EX with Leather / RES features:

- Honda Navigation System with Bilingual Voice Recognition and Steering Wheel-Mounted Controls • Rear View Camera • 360-Watt AM/FM/6-Disc In-Dash CD Changer Premium Audio System with 7 Speakers including Subwoofer • Power Adjustable Pedals • Two-Position Memory for Driver’s Seat • Removable 2nd Row Centre Console (Replaces PlusOne Seat™) • Power Tailgate • 17 Beverage Holders • Auto-On/Off Headlights • Body-Coloured Corner and Backup Sensors • Compass • Tri-Zone Climate Control (Automatic Dual Front, Automatic Rear) • 115-Volt Power Outlet • Programmable Bilingual Multi-System Information Display • Fog Lights

Other Available Accessories

- 3rd Row Sunshade • 6-Disc In-Dash CD Changer • Roof Bike Attachment • Full Roof Rack • Fog Lights • Front/Rear/Side Skirts • Full Nose Mask • Hood Edge Protector • PlusOne Seat™ Console • Rear Splash Guards • Wood-Grain Trim Kit



Specifications & Features

Engine	LX	EX	EX with Leather	EX with Leather / RES	Touring
Type: Aluminum-Alloy	V6	V6	V6	V6	V6
Displacement (cc)	3471	3471	3471	3471	3471
Horsepower @ rpm (SAE net Rev 8/04) <sup>‡</sup>	244 @ 5750	244 @ 5750	244 @ 5750	244 @ 5750	244 @ 5750
Torque (lbs-ft @ rpm) <sup>‡</sup>	240 @ 5000	240 @ 5000	240 @ 4500	240 @ 4500	240 @ 4500
Compression Ratio	10.0:1	10.0:1	10.0:1	10.0:1	10.0:1
Valvetrain: SOHC	24-Valve VTEC®	24-Valve VTEC®	24-Valve i-VTEC®	24-Valve i-VTEC®	24-Valve i-VTEC®
Fuel System: Sequential Multi-Point Programmed Fuel Injection	•	•	•	•	•
Ignition System: Electronic Full Transistor High Power with ECU Immobilizer System	•	•	•	•	•
Drive-by-Wire Throttle System™	•	•	•	•	•
Variable Cylinder Management™ (VCM®)			•	•	•
Active Control Engine Mount System (ACM)			•	•	•
Platinum Spark Plugs	•	•	•	•	•

<sup>‡</sup> Horsepower and torque calculations reflect new SAE J1349 procedures revised August, 2004.

Drivetrain					
Type: Front-Wheel Drive	•	•	•	•	•
Automatic Transmission: Electronically-Controlled 5-Speed with Lock-Up Torque Converter and Grade Logic Control	•	•	•	•	•
Towing Capacity* (kg)	1588	1588	1588	1588	1588

\*When combined with Honda's Accessory Towing Package. See your Owner's/Driver's Manual for details.

Body / Suspension / Chassis					
Body Type: Unibody	•	•	•	•	•
Brakes: Power-Assisted 4-Wheel Disc (Front Ventilated)	•	•	•	•	•
Front Suspension: Independent Strut with Coil Springs	•	•	•	•	•
Rear Suspension: Double-Wishbone with Coil Springs	•	•	•	•	•
Stabilizer Bar: Front	•	•	•	•	•
Steering Type: Power-Assisted Rack-and-Pinion	•	•	•	•	•
Tires: All-Season Radials	235/65 R16	235/65 R16	235/65 R16	235/65 R16	235/65 R16
Wheels: 16" x 7" JJJ	Steel, Full Covers	Alloy 7-Spoke	Alloy Split 5-Spoke	Alloy Split 5-Spoke	Alloy Split 5-Spoke

Exterior / Interior Dimensions					
Wheelbase (mm)	3000	3000	3000	3000	3000
Length (mm)	5105	5105	5105	5105	5105
Width (mm)	2198	2198	2198	2198	2198
Height (mm)	1749	1779	1779	1779	1779
Track – Front/Rear (mm)	1680 / 1680	1680 / 1680	1680 / 1680	1680 / 1680	1680 / 1680
Curb Weight (kg)	1989	2033	2062	2072	2095
Dimensions (mm) – Headroom Front / 2nd Row / 3rd Row	1039 / 1016 / 976	1039 / 1016 / 976	996 / 1016 / 976	996 / 1016 / 976	996 / 1016 / 976
– Legroom Front / 2nd Row / 3rd Row	1036 / 1005 / 1044	1036 / 1005 / 1044	1036 / 1005 / 1044	1036 / 1005 / 1044	1036 / 1005 / 1044
– Hiproom Front / 2nd Row / 3rd Row	1448 / 1637 / 1231	1448 / 1637 / 1231	1448 / 1637 / 1231	1448 / 1637 / 1231	1448 / 1637 / 1231
Cargo Volume (L) – Behind 3rd Row	1934.0	1934.0	1934.0	1934.0	1934.0
– Behind 2nd Row	2579.7	2579.7	2579.7	2579.7	2579.7
– Behind 1st Row	4173.9	4173.9	4173.9	4173.9	4173.9
Passenger Volume (L)	4853.5	4853.5	4853.5	4853.5	4853.5
Fuel Capacity (L)	80	80	80	80	80
Fuel Consumption,* City / Highway (L/100 km)	12.5 / 8.5	12.5 / 8.5	12.0 / 7.7	12.0 / 7.7	12.0 / 7.7

\*Fuel consumption (regular unleaded) for comparison purposes only. See Dealer for latest 2006 EnerGuide published by NRCan (when available).

Exterior Features	LX	EX	EX with Leather	EX with Leather / RES	Touring
Body-Coloured Door Handles		•	•	•	•
Body-Coloured Side Protector		•	•	•	•
Chrome Front Grille	•	•	•	•	•
Dark Window Tint – Sliding Doors and Rear Window	•	•	•	•	•
Dual Sliding Doors	•	Power	Power	Power	Power
Fog Lights					•
Front Splash Guards	•	•	•	•	•
Front 2-Speed Wipers with Variable Intermittent Settings	•	•	•	•	•
Green Glass – Super Heat Rejecting	•	•	•	•	•
Heated Power Remote Door Mirrors	•	Body-Coloured	Body-Coloured	Body-Coloured	Body-Coloured
Multi-Reflector Halogen Headlights	•	with Auto-Off	with Auto-Off	with Auto-Off	with Auto-On/Off
Parking Sensors, Front and Rear, Body-Coloured					•
Power Moonroof			•	•	•
Power Tailgate					•
Rear Lip Spoiler	•	Body-Coloured	Body-Coloured	Body-Coloured	Body-Coloured
Rear Wiper with Fixed Intermittent Setting and Washer	•	•	•	•	•
Roof Side Rails*		•	•	•	•
Side Window Defrosters, Rear Window Defroster with Timer	•	•	•	•	•
Trailer Hitch Pre-Wire	•	•	•	•	•

\*Full Roof Rack available as an accessory.

Comfort and Convenience					
12-Volt Accessory Outlet (Front and Rear)	•	•	•	•	•
115-Volt Accessory Outlet (3rd Row)					•
Active Noise Cancellation™ (ANC™)			•	•	•
Adjustable Steering Column	•	•	•	•	•
Air Conditioning: (CFC-Free) with Front/Rear Controls	•	Dual Front Auto	Dual Front Auto	Dual Front Auto	Dual Front/Rear Auto
Beverage Holders, Front and Rear	15	15	15	15	17
Conversation Mirror		•	•	•	•
Cruise Control with Steering Wheel-Mounted Controls	•	•	•	•	•
Dual Front Illuminated Vanity Mirrors	•	•	•	•	•
Foldable Centre Table	•	•	•	•	•
Front and Rear Courtesy Lights	•	•	•	•	•
Front Passenger Under-Seat Storage Box		•	•	•	
HomeLink® Garage Door Opener		•	•	•	•
Honda Navigation System with Bilingual Voice Recognition and Steering Wheel-Mounted Controls					•
Illuminated Cargo Area with Utility Hooks	•	•	•	•	•
In-Floor Storage	•	with Lazy Susan	with Lazy Susan	with Lazy Susan	with Lazy Susan
Integrated 2nd Row Sunshades		•	•	•	•
Keyless Remote Entry	•	•	•	•	•
Lockable Glove Compartment	•	•	•	•	•
Low Washer Fluid Warning Light	•	•	•	•	•
Maintenance Minder	•	•	•	•	•
Map Lights – All Rows	•	•	•	•	•
Multi-Information Display – Programmable, Bilingual					•
Personal Light	•	with Delay	with Delay	with Delay	with Delay
Power Adjustable Pedals					•
Power Door and Tailgate Locks	•	•	•	•	•
Power Windows with Driver's One-Touch Up/Down	•	•	•	•	•
Power Windows – 2nd Row	•	•	•	•	•
Rear Heater Ducts – 2nd and 3rd Rows	•	•	•	•	•
Remote Fuel Lid Release	•	•	•	•	•
Removable 2nd Row Centre Console					•

Seating and Trim	LX	EX	EX with Leather	EX with Leather / RES	Touring
Driver's Seat Adjustable Lumbar Support		•	•	•	•
Driver's Seat with 8-Way Power Adjustment		•	•	•	•
Heated Front Seats			•	•	•
Leather-Trimmed Interior			•	•	•
Seat Type: Front Captains' Chairs	6-Way Manual Driver's	8-Way Power Driver's	8-Way Power Driver's	8-Way Power Driver's	8-Way Power Driver's
2nd Row Captains' Chairs with 3rd Row Retractable Magic Seat® – 60/40 Split	•	•	•	•	•
Seatback Pockets – Driver and Passenger (1st Row)		•	•	•	•
Seatback Pockets (2nd Row)		•	•	•	•
Stowable 2nd Row PlusOne Seat™ (8-Passenger Seating)		•	•	•	

Audio Systems					
120-Watt AM/FM Audio System with CD Player and 4 Speakers	•				
120-Watt AM/FM Audio System with 6-Disc In-Dash CD Changer, 6 Speakers with Steering Wheel-Mounted Audio Controls		•	•	•	
360-Watt Premium AM/FM Audio System with 6-Disc In-Dash CD Changer and 7 Speakers including Subwoofer with Steering Wheel-Mounted Audio Controls					•
Honda DVD Rear Entertainment System, with 9" Flip-Down Screen, Surround Sound Wireless Headphones and Wireless Remote				•	•

Safety					
3-Point Seatbelts in All Positions, 1st and 2nd Row Height Adjustable	•	•	•	•	•
2nd Row LATCH (Lower Anchors and Tethers for Children)	•	•	•	•	•
3rd Row Child Seat Tether Anchors	•	•	•	•	•
4-Wheel Anti-Lock Braking System (ABS) with Electronic Brake Distribution™ (EBD™) and Brake Assist	•	•	•	•	•
8-km/h Impact Absorbing Bumpers	•	•	•	•	•
Advanced Compatibility Engineering™ (ACE™) Body Structure	•	•	•	•	•
Childproof Rear Door Locks	•	•	•	•	•
Dual Front Airbags (SRS) – Dual-Stage, Dual-Threshold	•	•	•	•	•
Dual Side Airbags (SRS) with Passenger Seat Occupant Position Detection System™ (OPDS™)	•	•	•	•	•
ECU Immobilizer System	•	•	•	•	•
Front Occupant Knee Bolster	•	•	•	•	•
Rear View Camera					•
Security System	Pre-Wire	•	•	•	•
Side Curtain Airbags (all 3 Rows)	•	•	•	•	•
Vehicle Stability Assist™ (VSA®) with Traction Control System (TCS)	•	•	•	•	•

Instrumentation					
Corner and Backup Sensors					•
Compass					•
Door/Tailgate-Open Indicator Light	•	•	•	•	•
Exterior Temperature Indicator		•	•	•	•
Km-to-Empty Indicator					•
Low Fuel Indicator Light	•	•	•	•	•
Low Oil Pressure Indicator Light	•	•	•	•	•
Tachometer	•	•	•	•	•