



CX-7



CX-9



TRIBUTE

ALWAYS THE SOUL OF A SPORTS CAR.

zoom-zoom



MAZDA3



MAZDA3 SPORT



MAZDA5



MAZDA6



MAZDA6 SPORT WAGON



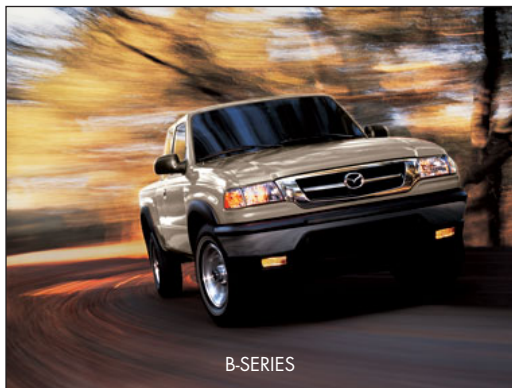
MAZDA6 SPORT HATCHBACK



MX-5



RX-8



B-SERIES

2007 **mazda CX-9**

SEVEN PASSENGERS...THE ZOOM-ZOOM WAY.



Get more detailed information on your Mazda CX-9. Check out our website at www.mazda.ca for specifications and features, option packages, pricing, financing, to book a test-drive and find a dealer near you.
© 2007 Mazda Canada Inc., 55 Vogell Road, Richmond Hill, Ontario L4B 3K5 Printed in Canada Part No. 9999-92-CX97-EN



Rediscover the Emotion of Motion.

All children instinctively know it. A few adults still remember it. One unique car company refuses to outgrow it. In grown-up language, it means the exhilaration and liberation that come from experiencing sheer motion. But as usual, children put it much better. And simply call it “zoom-zoom”. We practice it every day. It’s why we build the kind of cars we do. And why you’ll find the soul of a sports car engineered into everything we make ... including our impressive new crossover vehicle, Mazda CX-9.

Only Mazda could engineer an all-new crossover SUV as innovative as the seven-passenger CX-9. And create a way for your entire family to enjoy something more accommodating, exhilarating and, ultimately, more you. Treat yourself to the Mazda Test-Drive Experience. And see why the all-new CX-9 lives up to the promise – seven passengers ... the “zoom-zoom” way.



Cross over to something more breathtaking. And ingenious.

Its shape is bold and athletic. Its performance, responsive and agile. Its ride quality, inspiring and reassuring. Yet, what may surprise you most of all is CX-9's ingenious cabin. One that's spacious enough – from cockpit to cargo area – to actually seat seven adults in three rows of uncompromised comfort. How can a crossover SUV this stylish, exhilarating and emotionally satisfying also be this luxurious, versatile and practical? Simple. The all-new Mazda CX-9 gives your emotional wants and rational needs equal importance and priority. So now you can have it all. All seven of you.

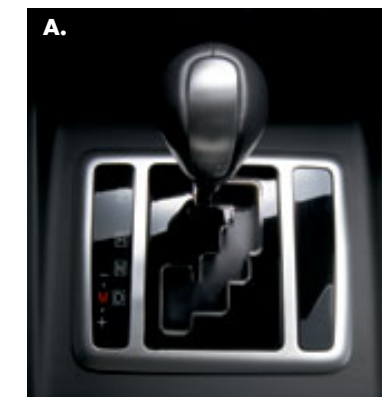


Fire up a powertrain that's both responsive and responsible.



Rarely has a crossover SUV been endowed with such a perfectly matched engine and transmission. Together, they form a highly advanced and efficient powertrain. One that provides Mazda CX-9 with a remarkable balance of responsive power and precise control. To ensure exhilarating performance, CX-9 delivers a spirited 263-hp @ 6,250 rpm. Plus a robust 249 lb. ft. of torque @ 4,500 rpm. All courtesy of an all-aluminum 3.5 L DOHC V6 that boasts 24-valves, variable valve timing and even electronic throttle control. This power translates into an impressive towing capacity of 1,588 kgs (3,500 lbs.) with the help of CX-9's heavy-duty transmission cooler and radiator fan. To ensure optimum driver control, a sophisticated 6-speed **Sport** mode automatic transmission – featuring a manual shift mode – is also standard. Completing the picture is Mazda's available Active Torque-Split All-Wheel Drive system. Computer controlled, it distributes the ideal amount of power to both the front and rear wheels – regardless of changing weather or road conditions – to enhance both traction and control.

A. 6-Speed Sport Mode Automatic Transmission. CX-9's advanced 6-speed **Sport** automatic transmission is an ideal match for its spirited V6 engine. It smoothly delivers all of the convenience of a state-of-the-art automatic plus all of the fun of a manual – thanks to its manual shift mode. In short, it's the best of both worlds. **B. Variable Valve Timing.** CX-9's sophisticated 3.5 L V6 utilizes variable valve timing to maximize low-end torque and high-rpm power. The impressive end result is a potent powerplant that's responsive and fuel-efficient. No power shortage here.





Enjoy confidence-inspiring road manners and a comfortable ride.

It takes far more than an abundance of horsepower to make a crossover SUV truly fun-to-drive. Which is why Mazda engineers gave CX-9 a precise, power-assisted rack-and-pinion steering system with engine-rpm-sensing variable power assist plus a true 4-wheel independent suspension system. Up front, a MacPherson strut set-up is responsible for maintaining ideal wheel-to-road contact. In the rear, CX-9 utilizes a sophisticated multi-link system to promote wheel alignment and surefooted handling. Substantial stabilizer bars, front and rear, also help to minimize body roll. Add Mazda's suspension-tuning expertise to the equation and you get a crossover with remarkably well-disciplined road manners. Plus a ride dynamic that's exceptionally stable, comfortable and responsive – in the parking lot as well as on the highway.




A. Rain-Sensing Windshield Wipers. This feature means one less thing to worry about. At the first sign of any precipitation, CX-9's variable intermittent windshield wipers automatically spring into action to help keep your windshield and view clear. The benefits, here, are crystal clear. **B. Auto On/Off Xenon Headlights.** Experience the added convenience and outstanding night-time illumination provided by auto on/off Xenon High-Intensity Discharge (HID) low-beam headlights, standard on the GT. Another shining example of innovative design.



For perhaps the first time in your life,
own an original.

At rest or at speed, Mazda CX-9 is anything but inconspicuous. It doesn't look like anything else. It doesn't perform like anything else. And it doesn't pretend to be anything else. Because it's a true original. At a glance, its bold, confident styling speaks volumes. While striking available exterior features like turn signals on the mirrors, HID headlights and handsome 20" alloy wheels (standard 18") say state-of-the-art sophistication. And with the kind of seven-passenger flexibility and spirited performance that reward its owner, the CX-9 is enough to make any discerning driver cross over.

An overhead view of a car's interior. A man with dark curly hair, wearing a red, white, and blue striped shirt and blue jeans, is seated in the driver's seat, holding the steering wheel. The car features light beige leather seats with dark grey horizontal stripes. The center console has a gear shifter and handbrake. The dashboard and infotainment system are visible in the foreground. The text "Treat your family to a higher calibre of craftsmanship." is overlaid on the lower half of the image.

Treat your family to a
higher calibre of craftsmanship.



Try on a cockpit in touch with tomorrow.

Tomorrow is where you'll be spending the rest of your life. So the cockpit of Mazda CX-9 is engineered accordingly. With a sports-car-inspired design that rewards you with enduring precision and style. And with a matrix of thoughtful features that embrace the future. Which is why every CX-9 provides the added convenience of rain-sensing windshield wipers and auto-light control. The extra comfort of an 8-way power-adjustable driver's seat and a leather-wrapped tilt and telescopic steering wheel. Naturally, the standard 6-speaker AM/FM CD stereo also features an available audio input jack for your Apple® iPod® or similar audio devices. And at your option, the CX-9 cockpit can also be easily personalized. With Bluetooth® phone compatibility. An Intelligent Key System. A Bose® 10-speaker Centerpoint Surround Sound System with 6-disc, in-dash CD changer. Even a voice-activated navigation system, rearview camera, and a power tailgate†. All to ensure that the CX-9 cockpit is a perfect fit for your lifestyle for years to come.

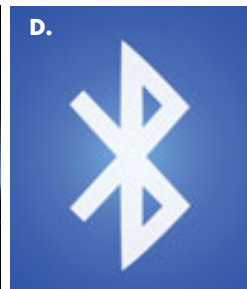
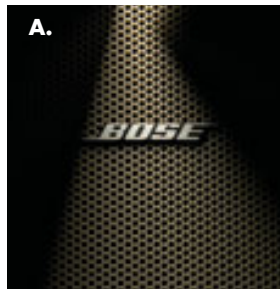
†Late availability.

A. At Your Fingertips. CX-9's steering wheel not only tilts and telescopes, it features controls for the audio system and cruise control so that you may keep your hands on the wheel. **B. Three-Zone Automatic Climate Control System.** Every family member's comfort is assured thanks to three separate temperature controls that allow you to independently – and precisely – control cooling and heating functions for the driver's, front passenger's and rear passengers' zones.



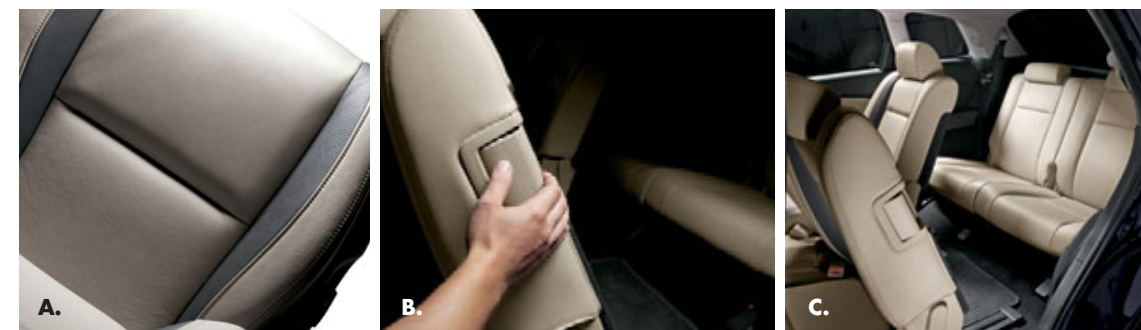
Connect with a crossover that pushes everyone's buttons.

With iconic styling, seven-passenger seating and responsive performance, Mazda CX-9 outsmarts most ordinary SUVs. Smarter still, it's a design that anticipates, supports and satisfies your family's ever-expanding needs – in areas like navigation, safety, communications, entertainment and even work. All of which proves that horsepower isn't the only way to measure CX-9's capacity to deliver true exhilaration. And fun.



A. Bose® 10-Speaker Centerpoint® Surround Sound System. Listen as the music on all your regular CDs is transformed into stunning, multi-channel synthesized surround sound performances. Custom-engineered for the CX-9 interior, this 277-watt system features Bose® Centerpoint® technology. The system also utilizes AudioPilot® noise compensation technology that automatically adjusts different frequencies to compensate for distracting road, wind and cabin noises. Available on the GT. Hear all you've been missing. **B. Rear Seat DVD Entertainment System.** Play movie DVDs, video games and audio CDs. The system includes a DVD player with audio/video/game inputs, a 9-inch fold-down LCD screen, wireless remote control and headsets. Also included is a 115-volt outlet for video game consoles. Available on the GT. So let the fun and games begin. **C. Voice-Activated, DVD-Based Navigation System.** Getting to and from any destination has never been so quick, easy and convenient. Best of all, the system's multilingual voice-activated, multi-command memory and its large, full-colour 7-inch touch-screen display make operation a snap. Available on the GT. Very enlightening. **D. Bluetooth® Hands-Free Phone Capability.** Communicate by phone more easily and safely, simply by utilizing voice commands and a Bluetooth-compatible cell phone. Enables you to make and receive calls, access voicemail messages and more – all hands-free. Available on the GT. So stay in touch.

Get a better handle on seven passengers...
the zoom-zoom way.



A. Lap of Luxury. Luxuriate in seats that afford you a higher level of comfort. The driver's seat features an 8-way power-adjustable design, including manual lumbar support. On the leather-trimmed GT, the driver's seat adds a memory function, while the passenger's seat adds 4-way power adjustment. Both GT front seats are heated. **B. & C. Mazda's Unique Slide & Sit™ Latch** provides easy access to third row seating by automatically tilting and sliding the second row seat forward to create nearly 9 inches of foot access space – all with just one hand. The second row seat also features a reclining seatback and nearly 5 inches of forward/backward travel.



Cleverly camouflaged by Mazda CX-9's sleek, athletic exterior is an incredibly spacious, versatile and practical cabin. One that's ingeniously engineered to accommodate seven adults – and assorted cargo – with equal ease. One that provides surprisingly easy access to third row seating. And one that's insightfully equipped with standard features that include: A trio of child safety-seat anchors. Two third row storage bins designed to accommodate portable electronic games and controllers. Eight cup holders. Four bottle holders. Plus one of the largest under-floor, cargo area storage boxes in its class. And since it's so easy to get more of your favourite things into a CX-9, your entire family will easily get more out of it.

CX-9 shown with available accessory roof rack.

A.



B.



A. Four Air Bags and Two Side-Impact Air Curtains. All CX-9 models feature Advanced Dual Front Air Bags (SRS), Front Side-Impact Air Bags plus Side-Impact Air Curtains with roll-over protection for all three rows of seating. **B. Four-Wheel Ventilated Disc Brakes with ABS and EBFD.** To promote linear, fade-resisting stopping power, there are four-wheel ventilated disc brakes with an Anti-lock Brake System (ABS). To more effectively – and automatically – regulate braking power between front and rear axles, Electronic Brake Force Distribution (EBFD) is also standard on all models.

Put your trust in a crossover that puts family safety first.

For maximum safety and peace-of-mind, every CX-9 we make comes with a remarkable array of passive and active safety systems. Some are as obvious as 3-point safety belts for all seven seating positions and integrated child-seat anchors on second row seats system. Others are well hidden under CX-9's shapely sheet metal and refined interior – including side-door impact-protection beams, front and rear crumple zones and a “crushable” brake pedal. While others still help you avoid dangerous situations altogether. These include an Anti-lock Brake System (ABS) with Electronic Brake Force Distribution (EBFD), a Traction Control System (TCS), Dynamic Stability Control (DSC) and Roll-Over Stability Control (RSC). The painstakingly engineered result is a crossover that ranks your family's safety among its most important priorities.





2007 MAZDA CX-9 ACCESSORIES | COLOURS

ACCESSORIES



Pictured from left to right: Cargo net, lift-gate garnish, roof rack.

- 6-disc in-dash CD/MP3 changer
 - All-weather floor mats
 - Ashtray
 - Auto-dimming mirror with compass and HomeLink®
- Cargo cover
 - First Aid kit
 - Fog lights
 - Front mask
 - Hood deflector – Smoke
 - iPod® adapter
- Moonroof wind deflector
 - Mud guards
 - Remote engine starter
 - Trailer hitch

For further information, please refer to the Mazda CX-9 Accessories Brochure. Mazda notes that all Genuine Mazda Accessories, if installed by your Mazda Dealer prior to or at an initial vehicle retail delivery, carry the same new-vehicle basic warranty as Mazda CX-9.

EXTERIOR COLOURS



BLACK CHERRY MICA



LIQUID PLATINUM METALLIC



GALAXY GREY MICA



COPPER RED MICA



STORMY BLUE MICA



CRYSTAL WHITE PEARL



SPARKLING BLACK MICA

MAZDA WARRANTY The basic warranty on the Mazda CX-9 covers all parts found to be factory defective for 3 years or 80,000 km, whichever comes first. Additional warranties cover powertrain components for a period of 5 years or 100,000 km, whichever comes first, body sheet metal perforation for 5 years and unlimited mileage and specific emission control components for up to 8 years or 128,000 km. Exclusions from coverage are limited to maintenance items or adjustments (repairs not requiring parts replacement) on vehicles over 12 months old and repairs due to normal wear and tear. Ask your Mazda Dealer for additional information.

ROADSIDE ASSISTANCE PROGRAM As part of our commitment to your total satisfaction, 2007 Mazda CX-9 owners are automatically enrolled in our Roadside Assistance Program. Roadside Assistance protects your Mazda CX-9 for the duration of the 3-year basic limited warranty. Should you require assistance during this period, our service will help to get your vehicle back on the road and minimize any inconvenience. For complete details on this program, see your Mazda Dealer.

MAZDA MOBILITY ASSISTANCE PROGRAM Mazda Canada believes that vehicle access is vital for everyone. Under this program, physically-challenged customers who purchase or lease a new, unused Mazda vehicle may be eligible to receive assistance from Mazda Canada Inc. to aid with the cost of acquiring and installing adaptive driving aids on their vehicle. For complete details on this program, see your Mazda Dealer.

MAZDA TEST-DRIVE EXPERIENCE Exhilaration begins with the **Mazda Test-Drive Experience** – a uniquely designed road trip engineered to take you miles beyond the ordinary test-drive. Down local streets, on-ramps, highways and off-ramps. Through straightaways, S-curves and corners. It's all about putting a Mazda to the test under real-world conditions. It's about discovering the superb acceleration, braking, steering, handling and ride quality that every Mazda offers. And rediscovering that fun, connected-to-the-road feeling we call “zoom-zoom”.

READY TO ROLL Our pre-delivery commitment means every new Mazda is checked out, gassed up and fitted with floor mats.

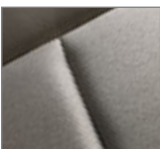
INTERIOR COLOURS



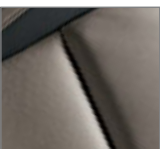
BLACK CLOTH



BLACK LEATHER



SAND CLOTH



SAND LEATHER

MAZDA CX-9 COLOUR COMBINATIONS

EXTERIOR	INTERIOR	
	GS (Cloth)	GT (Leather)
Black Cherry Mica	Sand	Sand
Liquid Platinum Metallic	Black	Black
Galaxy Grey Mica	Black	Black
Copper Red Mica	Sand	Black
Crystal White Pearl	Black	Black
Stormy Blue Mica	Sand	Sand
Sparkling Black Mica	Black	Black

MAZDA CX-9 WHEELS



18" alloy wheels (GS)



20" alloy wheels (GT)



For peace-of-mind motoring, we’ve created the Mazda Added Protection Plan (M.A.P.). M.A.P. complements your Mazda Limited Warranty for up to 7 years or 160,000 km, and protects you from unexpected repair expenses and the rising cost of repairs. All M.A.P. plans include Personal Budget and Repair Inflation Protection. In addition, all M.A.P. plans include Premium Roadside Assistance, which extends the roadside assistance coverage offered during the new-vehicle limited-warranty period throughout the M.A.P. term. The Premium Roadside Assistance offers Towing, Winching, Battery Boost, Out-of-Fuel Coverage, Tire Service, Lockout Service, Emergency Travel Expense Reimbursement and Travel Planning and Dealer Locator. Should you ever decide to sell your Mazda vehicle, M.A.P. is transferable to future owners and will enhance the resale value of your vehicle. The Mazda Added Protection Plan is fully backed and administered by Mazda Canada Inc. For more information, please contact your Mazda Dealer.

Ask your dealer about Mazda’s competitive program for recent university and college graduates.

Product changes and options availability: Following publication of this brochure, certain changes in standard equipment options, prices and the like, or product delays may have occurred which would not be included in these pages. Your Mazda Dealer is your best source for up-to-date information. Mazda reserves the right to change product specifications at any time without incurring obligations. Options and accessories shown or described in this brochure are available at extra cost and may be offered only in combination with other options or subject to additional ordering requirements or limitations. E. & O. E.



2007 MAZDA CX-9 SPECIFICATIONS

ENGINE			
Type	3.5L DOHC 24-valve V6	Compression ratio	10.3:1
Displacement	3,496 cc	Fuel system	Multi-port Electronic Fuel Injection (EFI)
Horsepower SAE net	263 @ 6,250 rpm	Recommended fuel	Regular
Torque SAE net lb. ft.	249 @ 4,500 rpm		
DRIVETRAIN			
Type	Front-wheel drive, optional AWD		
Transmission	6-speed <i>Sport</i> mode automatic with overdrive		
CHASSIS			
Frame	Ladder with triple “H” construction		
Front suspension	Independent strut type, coil springs and stabilizer bar		
Rear suspension	Independent multi-link, coil springs and stabilizer bar		
Steering	Rack-and-pinion with engine-rpm-sensing variable power assist		
Minimum turning circle	11.4m (curb-to-curb)		
Brakes	Power-assisted ventilated 4-wheel disc brakes		
	Front: 320 mm	Rear: 325 mm	
	Anti-lock Brake System (ABS) with Electronic Brake Force Distribution (EBFD)		
Curb weight (kg)	2WD: 1,956	AWD: 2,062	
CAPACITIES			
Seating	7 persons	Fuel tank	76L

2007 MAZDA CX-9 FEATURES

ENGINEERING FEATURES	GS	GT
3.5L DOHC 24-valve V6 engine	S	S
6-speed <i>Sport</i> mode automatic transmission	S	S
Power-assisted front and rear disc brakes	S	S
Anti-lock Brake System (ABS) with Electronic Brake Force Distribution (EBFD)	S	S
Active Torque-Split All-Wheel Drive system	0	0
Dynamic Stability Control (DSC)	S	S
Traction Control System (TCS)	S	S
Roll-Over Stability Control (RSC)	S	S
Front and rear stabilizer bars	S	S
WHEELS AND TIRES		
18" alloy wheels	S	–
20" alloy wheels – Bright finish	–	S
245/60R18 all-season tires	S	–
245/50R20 all-season tires	–	S
Temporary spare tire	S	S
EXTERIOR FEATURES		
Body-coloured front and rear bumpers	S	S
Body-coloured door handles	S	–
Bright finish on outer door handles	–	S
Body-coloured lift-gate garnish	S	–
Bright finish on lift-gate garnish	–	S
Body-coloured rear spoiler	S	S
Body-coloured power-operated door mirrors	S	S
Heated door mirrors	S	S
LED turn signal on door mirrors	–	S
Privacy glass	S	S
Auto light control	S	S
Headlights – Halogen	S	–
Headlights – Xenon (HID) with manual levelling feature	–	S
Rain-sensing front wipers; Rear intermittent wiper	S	S
Rear window defroster	S	S
Fog lights	–	S
Dual exhaust outlets with trapezoid garnish	S	S
Power tailgate	–	LP
AUDIO		
AM/FM CD player with 6 speakers	S	S
10-speaker premium Bose® audio system with 6-disc in-dash CD changer, AudioPilot® noise compensation technology and Centerpoint® Surround Sound System	–	LP
Auxiliary audio input	S	S
Steering-wheel-mounted audio controls	S	S
Bluetooth phone integration	–	NAV
5.1 channel rear entertainment system with 11 speakers and 115V outlet	–	RES
COMFORT AND CONVENIENCE		
Front and rear air conditioning with 3-zone climate control	S	S
Automatic climate controls	S	S
Steering-wheel-mounted cruise controls	S	S
Tilt and telescopic steering wheel	S	S
Power door locks	S	S
Power windows with driver’s/front passenger’s one-touch up and down feature	S	S
Auto up/down system for front windows (keyless [down only] and key cylinder)	S	S
Remote keyless entry system with retractable key (includes two transmitters)	S	S
Intelligent key system (keyless entry and start)	–	LP
Rear heater ducts	S	S
Cargo area lamp	S	S
Map lamps	S	S

EXTERNAL DIMENSIONS (mm)			
Wheelbase	2,875	Overall width	1,936
Track (fr/r)	1,654/1,644	Overall height	1,728
Overall length	5,074	Ground clearance	204
INTERNAL DIMENSIONS			
Headroom (fr/2 nd r/3 rd r) (mm) 975/990/899 (with moonroof)			
1,005/990/899 (without moonroof)			
Legroom (fr/2 nd r/3 rd r) (mm) 1,038/1,010/824			
Shoulder room			
(fr/2 nd r/3 rd r) (mm) 1,510/1,490/1,444			
Cargo length (mm)	483 (rear seat to tailgate)	Passenger volume (L)	3,893 (with moonroof)
Cargo width (mm)	1,170 (between quarter trims)		3,941 (without moonroof)
Cargo volume (L)	487 (2 nd and 3 rd row upright)	Total volume (L)	4,380 (with moonroof)
	2,851 (2 nd and 3 rd row folded down)		4,428 (without moonroof)
FUEL ECONOMY RATINGS* (L/100km)			
	2WD	AWD	
City/Highway	13.3/8.9	14.5/9.7	
*Estimated fuel economy. Your actual fuel consumption may vary.			
TOWING CAPACITY			
Towing	1,588 kg (3,500 lbs.)		

COMFORT AND CONVENIENCE (cont’d)	GS	GT
Driver and passenger sunvisors with covered vanity mirrors and extensions	S	S
2 power outlets with cap (in front and rear console box)	S	S
Dual front, dual second row and 4 third row cup holders (8 in total)	S	S
Passenger assist grips (3)	S	S
Coat hooks (2)	S	S
Voice-activated navigation system with touchscreen, rearview camera and MP3 functionality	–	NAV
Power glass moonroof with one-touch open and close	0	S
SEAT AND TRIM		
8-way power-adjustable driver’s seat	S	S
Driver’s seat manual lumbar support	S	–
Driver’s seat power lumbar support	–	S
Driver’s seat memory position	–	S
4-way power-adjustable passenger’s seat	–	S
Heated front seats	–	S
60/40-split fold-down 2 nd row seatback	S	S
50/50-split fold-down 3 rd row seatback	S	S
Cloth upholstery	S	–
Leather-trimmed upholstery	–	S
Leather-wrapped 3-spoke steering wheel	S	–
Leather-wrapped 3-spoke steering wheel – Piano black finish	–	S
Leather-wrapped shift knob	S	S
Inner door handle – Silver finish	S	S
Interior luxury trim – Piano black finish	S	–
Interior luxury trim – Wood finish	–	S
INSTRUMENT PANEL AND STORAGE		
Electroluminescent gauges	S	S
Blue indirect lighting	–	S
Tachometer	S	S
Exterior temperature gauge	S	S
Overhead console with sunglass storage	S	S
Illuminated glove compartment	S	S
Front door storage pockets with bottle holders	S	S
Driver’s side seatback pocket	S	S
Warning lights for oil pressure, check engine, low washer fluid, low fuel level, door ajar and air bags	S	S
SAFETY AND SECURITY		
Dual front air bags	S	S
Dual front side air bags	S	S
Dual side air curtains	S	S
Roll-over sensor for air curtains	S	S
Anti-theft alarm system	S	S
Engine immobilizer theft-deterrent system	S	S
Side-door impact-protection beams	S	S
3-point safety belts for all occupants	S	S
Height-adjustable front and rear seat head restraints	S	S
Height-adjustable front safety-belt anchors	S	S
Integrated child-seat anchors on second row seats	S	S
Driver and front passenger safety-belt pretensioners and load limiters	S	S
S = Standard 0 = Optional – = Not available LP = Luxury package RES = Rear Entertainment System NAV = Navigation System		
Luxury package: 10-speaker premium Bose® audio system with 6-disc in-dash CD changer, AudioPilot® noise compensation technology and Centerpoint® Surround Sound System, power tailgate and intelligent key system (keyless entry and start). (Available on Mazda CX-9 GT)		
Rear Entertainment System: 5.1 channel rear entertainment system with 11 speakers and 115V outlet. Moonroof not available with RES. (Available on Mazda CX-9 GT)		
Navigation System: Voice-activated Navigation System with touchscreen and MP3 functionality, rearview camera and Bluetooth phone integration. (Available on Mazda CX-9 GT)		
© Bose, © Centerpoint and © AudioPilot are registered trademarks of Bose Corporation. © Apple and © iPod are registered trademarks of Apple Computer, Inc. © HomeLink and the HomeLink house are registered trademarks of Johnson Controls, Inc.		