

2008 EXPLORER



Built for life in Canada



SMOOTH MOVES

You can count on the extreme flexibility of Explorer's 4-wheel independent suspension to help it hug the road. Monotube shocks and a 2nd-generation Independent Rear Suspension also help it tackle rough terrain and uneven road surfaces in a remarkably civilized manner.



POWERFUL PULL

When properly equipped with the Trailer Tow Package (standard on Limited, optional on XLT and Eddie Bauer), Explorer can tow up to 3234 kg (7130 lbs.). So you may find yourself drawn toward new kinds of recreation.



Athletic V8.

Explorer Limited's 4.6L 3-valve V8 engine and its first-in-class* 6-speed automatic transmission give you a massive 292 hp and 300 lb.-ft. of torque.

*Truck-based Midsize SUV class.



Get ready for adventure.

Explorer's 4.0L SOHC V6 engine powers your journeys with 210 hp and 254 lb.-ft. of torque. Mated to a 5-speed automatic transmission, the V6 delivers an estimated 16.0 L/100 km** in the city and 10.8 on the highway. And the impressively quiet, comfortable ride? It's courtesy of thoughtful engineering details such as the sound-dampening carpet and headliner materials, the contour of the sideview mirrors, and overall powertrain operation. It's time to go explore.

**Fuel consumption ratings based on Transport Canada approved test methods.

Trust its innate stability.

Explorer's Control Trac® 4-wheel-drive system goes from everyday driving in 4x4 AUTO to serious off-road venturing in 4x4 LOW at the touch of a button. Plus, every Explorer features AdvanceTrac® with class-exclusive* RSC® (Roll Stability Control™), which can help in many real-world situations, such as when you're making an emergency manoeuvre to avoid something on the road, driving on slippery surfaces like snowy, muddy, wet or gravel roads, or even just travelling on uneven surfaces, such as in construction zones.

*Excluding other Ford Motor Company vehicles.

ASSISTANCE ON DEMAND

AdvanceTrac with RSC, standard on every Explorer, is an electronic stability enhancement system that actually measures what other manufacturers' systems ignore or can only estimate. Our system features a vehicle-roll motion sensor in addition to AdvanceTrac's Anti-lock Brake System (ABS), traction control and yaw control. RSC uses the sensor to directly measure the vehicle's roll-rate at least 100 times every second, which helps determine when and how the system will apply individual brakes and modify engine power to help keep all 4 wheels firmly planted.

Remember that even advanced technology cannot overcome the laws of physics. It's always possible to lose control of a vehicle due to inappropriate driver input for the conditions.



LEGEND

Vehicle inertia



Brakes activating to maintain control



Explorer XLT in White Suede.

All 6 airbags – standard.

Front-seat side airbags join the adaptive driver and front-passenger front airbags of our class-exclusive Intelligent Safety System™ and the side-curtain airbags of our patented 3-row Safety Canopy™ System as standard equipment on every Ford Explorer.



Take command with ease.

New for 2008, the optional DVD-based Navigation System features new voice activation for convenient hands-free operation. SIRIUS Satellite Radio,* standard on every Explorer, offers you digital-quality channels – including sports, news, entertainment and 100% commercial-free music – all across Canada.

*Includes complimentary 6-month prepaid subscription and online access. See your Ford of Canada Dealer or contact SIRIUS at 1-888-539-7474 for more information.

SIRIUS
SATELLITE RADIO



QUICK THAW

Clear your view at the push of a button with Explorer's fold-away, power-adjustable, heated sideview mirrors. This luxurious feature is standard on XLT, Eddie Bauer and Limited.



PERFECT FIT

Explorer Eddie Bauer and Limited models feature power-adjustable pedals with a memory feature that can store and recall settings for 2 different drivers. These pedals are optional on XLT without the memory feature.

SYNC
Powered by **Microsoft**

Exclusive Ford SYNC™**

Groundbreaking hi-tech innovation: This voice-activated, hands-free communications and entertainment system integrates most Bluetooth®-enabled mobile phones and nearly any portable media player with your Explorer. Visit ford.ca for full connectivity details.

**Late availability.

Explorer Eddie Bauer leather-trimmed interior in Camel with Sand inserts and available equipment (U.S. model shown).



CARGO SOLUTIONS

A rear cargo cover is optional on Explorer 5-passenger models to help you keep appearances tidy while storing items away from prying eyes. With the 2nd-row seat folded flat, this Explorer can handle up to 2398 litres (84.7 cu. ft.) of cargo.



POWER UP (OR DOWN)

The PowerFold™ 3rd-row 50/50 split seat is standard on Limited, and optional on Eddie Bauer and XLT. For added comfort and convenience, it sits 44 mm (1.75 in.) higher than on the previous generation, improving forward vision. Those seated in the 3rd row can easily exit (on their own) thanks to a release built into the back of the 2nd-row seat.



Choose your ride.

Explorer is available in 3 seating configurations. For 7 people, go with the 2nd-row 60/40 split bench seat and the available 3rd-row seat. To seat 6, combine the available quad bucket seating and 3rd-row seat. For 5 on XLT and Eddie Bauer, stick with the standard 2nd-row seat.

Travel in style and comfort.

Treat yourself to Explorer Eddie Bauer's sophisticated interior with its leather-trimmed seats, including a 10-way power, heated seat for the driver and a 6-way power, heated seat for the front passenger. Auxiliary rear climate control is available (standard on Limited) to help those in back stay comfy. And thanks to the overhead and centre floor consoles, there's ample storage for all your road trip essentials (sunglasses, CDs, guide books, refreshments, etc.).

Explorer Eddie Bauer leather-trimmed interior in Charcoal Black with Camel inserts and optional equipment.

MODEL LINEUP

Each series includes the standard equipment of the previous series, except where additions/exceptions are noted.

XLT — 17" machined-aluminum wheels • Body-colour bumpers and wheel-lip mouldings • 4-bar chrome grille • Fog lamps • Black step bars • Power, heated sideview mirrors with security approach lamps • Black roof side rails and crossbars • Cloth 1st row bucket seats with 2-way adjustable head restraints and 6-way power driver seat with manual lumbar • AM/FM stereo/single-CD player with MP3 capability • SIRIUS Satellite Radio • Auxiliary audio input jack • One-touch integrated start • Cruise control • Carpeted floor mats in 1st and 2nd rows • Front-seat side airbags • Keyless-entry keypad • Auto-dimming rearview mirror • Safety Canopy™ System

EDDIE BAUER — 18" chrome-clad aluminum wheels • Pueblo Gold lower front bumper, rear bumper, wheel-lip mouldings and step bar accents • 3-bar chrome grille • Leather-trimmed, heated 1st-row bucket seats with 10-way power driver seat, including power lumbar and recline with memory feature, and 6-way power passenger seat • Power-adjustable pedals with memory • Woodgrain accents • 4-line message centre • Dual-zone Electronic Automatic Temperature Control • Audiophile® AM/FM stereo/6-disc in-dash CD changer with MP3 capability, subwoofer and 190 watts • Reverse Sensing System • Universal Garage Door Opener

LIMITED — Monochromatic appearance • 4-bar chrome grille • Power, heated sideview mirrors with security approach lamps and chrome accents • Chrome roof side rails with Black crossbars and end caps • 2nd-row fold-flat seats • PowerFold™ 3rd-row seat • Unique woodgrain inserts • Centre floor console with unique appearance for centre finish and wrapped armrest • Auxiliary rear climate control • Power moonroof



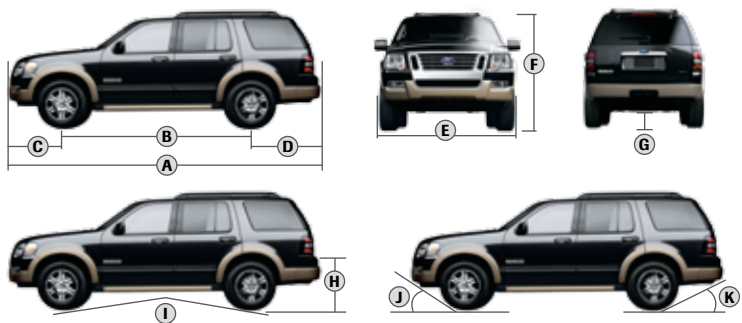
Find your match.

The 2008 Ford Explorer is available in your choice of 3 well-equipped models: the sporty XLT, the sophisticated Eddie Bauer and the luxurious Limited. One of them is sure to be a perfect fit for your lifestyle. Choose with confidence and start planning your next adventure today.

Explorer XLT in Vapour Silver Metallic,
Explorer Eddie Bauer in Stone Green Metallic
and Explorer Limited in Black.

SPECIFICATIONS

DIMENSIONS



EXTERIOR	mm (in.)
A. Overall length	4912 (193.4)
B. Wheelbase	2888 (113.7)
C. Overhang — front	899 (35.4)
D. Overhang — rear	1125 (44.3)
E. Width (excluding mirrors)	1872 (73.7)
Width (including mirrors)	2154 (84.8)
Width (mirrors folded)	1969 (77.5)
F. Height (with options)	1849 (72.8)
G. Ground clearance (minimum running)	208 (8.2)
H. Liftover height (curb)	798 (31.4)
I. Ramp breakover angle	18.4°
J. Angle of approach	28.2°
K. Angle of departure	23.8°

INTERIOR	mm (in.)
1st Row	
Head room	1011 (39.8)
Shoulder room	1499 (59.0)
Hip room	1407 (55.4)
Leg room	1077 (42.4)

2nd Row	
Head room	983 (38.7)
Shoulder room	1499 (59.0)
Hip room	1410 (55.5)
Leg room	937 (36.9)

3rd Row (if equipped)	
Head room	950 (37.4)
Shoulder room	1349 (53.1)
Hip room	1151 (45.3)
Leg room	886 (34.9)

Cargo Volume	litres (cu. ft.) 5 pass./7 pass.
Behind 1st row	2398 (84.7) / 2344 (82.8)
Behind 2nd row	1271 (44.9) / 1243 (43.9)
Behind 3rd row (if equipped)	— /385 (13.6)

Cargo and load capacity limited by weight and weight distribution.

STANDARD FEATURES

MECHANICAL
4-wheel Anti-lock Brake System (ABS)
130-amp alternator
3.55 axle ratio
Class II trailer tow hitch receiver with 4-pin connector
Control Trac® 4-wheel-drive system
Engine block heater
Independent front and rear suspension
Maintenance-free 72-amp battery
One-touch integrated start

SAFETY/SECURITY
1st-row height-adjustable safety belts with pretensioners and adaptive load-limiting retractors
Adaptive driver and front-passenger front airbags*
Adaptive energy-absorbing steering column
AdvanceTrac® with RSC® (Roll Stability Control™)
Battery saver
Belt-Minder® safety belt reminder
Front-Passenger Sensing System
Front-seat side airbags
Illuminated entry
Lower anchors and tether anchors for child-safety seats (LATCH) in 2nd-row outboard seats
Safety Canopy™ System
SecuriLock® passive anti-theft engine immobilizer system
Tire Pressure Monitoring System

INTERIOR
1st-row dome/map lights
2-line message centre with outside temperature display and compass
2nd-row 60/40 split-folding bench seat with recline**
Air conditioning
AM/FM stereo/single-CD player with MP3 capability and auxiliary audio input jack
Auto-dimming rearview mirror
Cargo Management System
Coat hooks — 4
Cruise control
Floor console with floor shifter
Grab handles — 1 for front passenger, 2 in 2nd row
Illuminated glove compartment
Leather-wrapped steering wheel with secondary audio controls
Loadfloor tie-down hooks — 4
Power points — 2
Power windows with one-touch-down driver-side feature
SIRIUS Satellite Radio (includes complimentary 6-month prepaid subscription)
Visor vanity mirrors — Illuminated

EXTERIOR
Fog lamps
One-piece liftgate with flip-open rear window
Power, heated sideview mirrors with security approach lamps
Privacy glass (rear doors, rear quarter windows and liftgate window)
Rear-window defroster
Remote keyless-entry system with 2 key fobs and driver-side keypad
Windshield wipers — Intermittent front (speed-sensitive) and rear

*Always wear your safety belt and secure children in the rear seat.

**5- and 7-passenger models only.

© 2007 SIRIUS Satellite Radio Inc. "SIRIUS," the SIRIUS dog logo, channel names and logos are trademarks of SIRIUS Satellite Radio Inc.

ENGINES

	HORSEPOWER (hp @ rpm)	TORQUE (lb.-ft. @ rpm)
4.0L V6	210 @ 5100	254 @ 3700
4.6L V8	292 @ 5750	300 @ 3950

ESTIMATED FUEL CONSUMPTION† RATINGS L/100 KM (MPG)

	TRANSMISSION	CITY	HWY.
4.0L V6	5-speed automatic	16.0 (18.0)	10.8 (26.0)
4.6L V8	6-speed automatic	16.8 (17.0)	10.8 (25.0)

†Based on Transport Canada approved test methods.

SPECIFICATIONS

FEATURES & OPTIONS

XLT			
EDDIE BAUER			
LIMITED			
MECHANICAL			
○	○	—	4.0L SOHC V6 engine with 5-speed automatic transmission
○	○	●	4.6L 3-valve V8 engine with 6-speed automatic transmission
●	—	—	17" machined-aluminum wheels
—	●	●	18" chrome-clad aluminum wheels
●	—	—	P245/65R17 all-season OWL tires
○	—	—	P245/65R17 all-terrain BSW tires
—	●	●	P235/65R18 all-season OWL tires
○	○	—	Non-limited-slip rear axle — 3.73 ratio*
○	○	○	Skid plates — Fuel tank and transfer case
SEATING			
●	—	—	Cloth trim — 1st-row bucket seats with 2-way adjustable head restraints and 6-way power driver seat with manual lumbar
○	—	—	Leather trim — 1st-row heated bucket seats including 10-way power driver seat with power lumbar and recline (vinyl 3rd row, if equipped)
—	●	●	Leather trim — 1st-row heated bucket seats, with 10-way power driver seat, including power lumbar, recline and memory, and 6-way power passenger seat with manual lumbar (vinyl 3rd row, if equipped)
○	○	●	PowerFold™ 3rd-row 50/50 split fold-flat bench seat (requires auxiliary rear climate control)
—	○	○	Quad bucket seating — Includes 2nd-row bucket seats and floor console (requires 3rd-row seat)

XLT			
EDDIE BAUER			
LIMITED			
INTERIOR			
—	●	●	4-line message centre
●	—	—	Air conditioning — Manual
—	●	●	Air conditioning — Dual-zone Electronic Automatic Temperature Control
○	○	○	All-weather front and rear floor mats
○	●	●	Audiophile® Sound System with AM/FM stereo/6-disc in-dash CD changer with MP3 capability, auxiliary audio input jack, subwoofer and 190 watts
○	○	●	Auxiliary rear climate control (requires 3rd-row seat)
○	○	—	Cargo cover — Rear (not available with 3rd-row seat)
○	●	●	Power-adjustable pedals (with memory feature on Eddie Bauer and Limited)
○	○	●	Power moonroof with sunshade and one-touch-open/-close feature
○	○	○	Rear-Seat DVD Entertainment System
—	●	○	Universal Garage Door Opener
○	○	○	Voice-activated, DVD-based Navigation System
EXTERIOR			
—	●	—	Bumpers and wheel-lip mouldings — Pueblo Gold-painted
●	—	●	Bumpers and wheel-lip mouldings — Body-colour-painted
○	○	●	Class III/IV Trailer Tow Package† — Includes 7-pin trailer wiring harness and connector, 7-pin to 4-pin adapter and frame-mounted hitch receiver
●	—	●	Grille — Chrome, 4-bar design
—	●	—	Grille — Chrome, 3-bar design
○	○	○	Heated windshield
○	●	●	Reverse Sensing System
●	●	—	Roof side rails — Black
—	—	●	Roof side rails — Chrome with Black end caps
●	●	●	Roof-rail crossbars — Black
—	○	○	Running boards — Power-deployable; accent colour on Eddie Bauer, chrome accents on Limited
●	●	●	Step bars — Black on XLT, Pueblo Gold accents on Eddie Bauer, chrome accents on Limited

● Standard ○ Optional — Not Available

*3.73 non-limited-slip axle required and only available with Class III/IV Trailer Tow Package with 4.0L V6.

Audiophile is a registered trademark of Audiophile, Inc.

TRAILER TOWING APPLICATIONS KG (LBS.)

AXLE RATIO	MAXIMUM LOADED TRAILER WEIGHT**	
	4.0L V6	
3.55	4x4 Class II	1587 (3500)
3.73	4x4 Class III/IV	2358 (5200)
	4.6L V8	
3.55	4x4 Class II	1587 (3500)
3.55	4x4 Class III/IV	3234 (7130)

NOTE: Maximum towing capability when properly equipped. Maximum capability will vary based on passenger and cargo loads, and optional equipment installed on the vehicles. See your Ford of Canada Dealer for more information.
Cargo and load capacity limited by weight and weight distribution.

**Deduct 227 kg (500 lbs.) when equipped with auxiliary rear climate control.

SPECIFICATIONS

EXTERIOR COLOURS



White Suede



Redfire Metallic



Dark Blue Pearl Metallic



Silver Birch Metallic



Stone Green Metallic



Black



Vapour Silver Metallic



Dark Cherry Metallic



White Sand Tri-Coat Metallic

Ford uses clearcoat paint for beauty and protection. Colours shown are representative only. Not all colours are available on all models. See your Ford of Canada Dealer for actual paint/trim options. Vehicles shown may contain optional equipment.

WHEELS

- A

17" Machined-Aluminum
Standard on XLT
- B

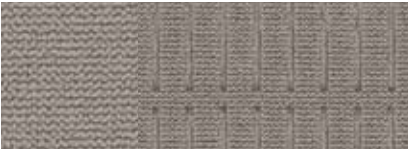
18" Chrome-Clad Aluminum
Standard on Eddie Bauer and Limited



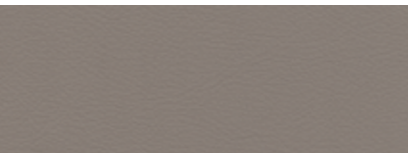
INTERIOR COLOURS



Camel Cloth with Sand Inserts
Standard on XLT



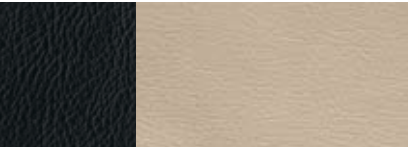
Medium Light Stone Cloth*
Standard on XLT



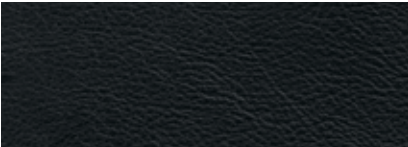
Medium Light Stone Leather*
Optional on XLT



Camel Leather with Sand Inserts
Standard on Eddie Bauer and Limited
Optional on XLT



Charcoal Black Leather with Camel Inserts
Standard on Eddie Bauer



Charcoal Black Leather
Standard on Limited

CAMEL	
CHARCOAL BLACK	
XLT	
●	● White Suede**
●	● Redfire Metallic
●	● Dark Blue Pearl Metallic
●	● Silver Birch Metallic
●	● Stone Green Metallic**
●	● Black
●	● Vapour Silver Metallic**
EDDIE BAUER	
●	● White Suede**
●	● Redfire Metallic
●	● Dark Blue Pearl Metallic
●	● Stone Green Metallic**
●	● Black
●	● Vapour Silver Metallic**
●	● Dark Cherry Metallic

CAMEL	
CHARCOAL BLACK	
LIMITED	
●	● Silver Birch Metallic
●	● Stone Green Metallic**
●	● Black
●	● Vapour Silver Metallic**
●	● Dark Cherry Metallic
●	● White Sand Tri-Coat Metallic†

*Charcoal Black environment. **New for 2008. †Extra-cost option.

2008 FORD EXPLORER

The only mid-sized SUV to offer:

- Optional new Ford SYNC™ voice-activated, fully integrated, customizable media system (late availability)
 - Available 6-speed automatic transmission
 - Available PowerFold™ 3rd-row seat
 - Optional heated windshield
- Optional power-deployable running boards

Plus:

- Most seating configurations in its class

For more information on
Ford of Canada and Ford products,
please visit our website:



Our commitment to you... Peace-of-Mind Protection

- **Basic Coverage:**
3 years/60,000 km
- **Powertrain Warranty:**
5 years/100,000 km
- **Corrosion Warranty:**
5 years/unlimited distance
- **Roadside Assistance:**
5 years/100,000 km¹

Certain conditions apply. For more information on these warranties and coverages, ask your local Ford of Canada Dealer or visit ford.ca.
¹No additional cost.

For prompt, courteous answers to your questions:

Ford Customer Relationship Centre
1-800-565-3673
Ford Credit Customer Service Centre
1-877-636-7346

Please Note: The electronic version of the
Ford of Canada vehicle brochure is a condensed
version of the original printed version.

Competitive comparisons are based on 2007 competitive models, publicly available information and Ford data at the time of release of the 2008 original printed version. Some features discussed may be optional. Vehicles shown may contain optional equipment. Features shown may be offered only in combination with other options or subject to additional ordering requirements or limitations. Dimensions shown may vary due to optional features and/or production variability. Following publication of the 2008 original printed brochure, certain changes in standard equipment, options and the like, or product delays may have occurred which would not be included in these pages. Your Ford of Canada Dealer is your best source for up-to-date information. Ford Motor Company of Canada, Limited, reserves the right to change product specifications at any time without incurring obligations. Colours may not be exactly as illustrated. Please see your sales consultant for specific colour and model availability. Please visit your local dealer or www.ford.ca for complete vehicle details.