

09  
TUCSON





LIMITED MODEL IN CRYSTAL SILVER

## *Discover the 2009 Tucson.*



The 2009 Tucson, Hyundai's compact CUV, combines the rugged styling of an SUV with the sporty performance and fuel-efficiency of a sedan to bring you the ultimate in versatility. Whether taking to the streets or taking on the open road, you'll be ready for anything in a 2009 Tucson.

The Tucson allows you to meet everyday demands while satisfying your inner adventurer. With the versatility provided by the Tucson, you have the independence to be spontaneous – whether to haul furniture finds around the city or take road trips into the wild. Discover a vehicle that gives you the best of both worlds. Discover the 2009 Tucson.



*Yours to discover.*



LIMITED MODEL IN CHAMPAGNE SILVER

09  
TUCSON



## exterior design

**THE BEST OF BOTH WORLDS.** Whether your travels take you through the city or beyond, the Tucson is well suited to just about every adventure. Its contemporary exterior combines durability with a noticeably sleek design. Its redesigned wheels accentuate the Tucson's chrome accents, including its new front grille, giving it a stylish edge on the road. And with an overall look that is rugged yet refined, the Tucson can meet any demands you make of it.



**EASY ACCESS.** Benefit from the added convenience of a flip-up tailgate window. It lets you carry irregularly shaped objects from point A to B with ease.

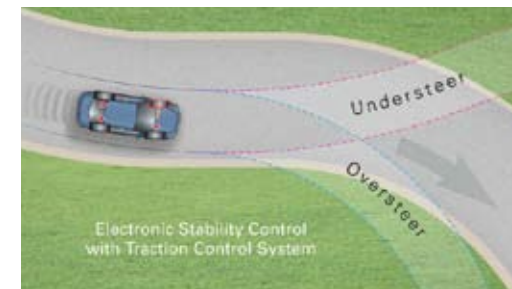
**MELT WINTERS AWAY.** The Tucson's heated windshield wiper park heats the glass to help keep the windshield wipers ice-free.

Let adventure lead the way.



LIMITED MODEL IN MESA RED

09  
TUCSON



## performance

**THE RIGHT MOVES ON EVERY ROAD.** With the drivability of a smaller vehicle and a choice of two engines, two transmissions and two drive configurations, the Tucson is capable – from the highways to the back roads. The L and GL are powered by a fuel-efficient 2.0L, 140 horsepower, DOHC, 4-cylinder inline engine with Continuously Variable Valve Timing (CVVT), teamed with a 5-speed manual transmission (L and GL) or convenient 4-speed automatic transmission with SHIFTRONIC™ (optional on the GL; not available on the L). If it's power you're after, the GL V6 and Limited offer a 2.7L, 173 horsepower V6, coupled with a 4-speed automatic transmission with SHIFTRONIC™. The Tucson's front-wheel drive, or available 4WD, works with its versatile suspension system to provide handling and control that let you maneuver through the mazes of the inner city or explore the great wide open of the countryside.



**4-WHEEL DRIVE.** The optional on-demand 4WD system with driver-selectable 4WD lock can deliver up to 50 percent of the torque to the rear wheels for maximum traction.

**A NEW STANDARD IN SAFETY.** Electronic Stability Control (ESC) with Traction Control System (TCS)<sup>2</sup> works to help keep your wheels where they're meant to be by applying braking power and reducing engine power in oversteer or understeer conditions.



Comfort and convenience.



09  
TUCSON



## interior styling

**LIVING SPACE.** The Tucson's interior is designed to provide space for life, and its ever-changing demands. Shopping bags or snowboards – the Tucson lets you pack it full without cramping your style. Enjoy the Tucson's superior cargo-loading capacity, 60/40 split fold-down rear seatback, tie-down anchor points and cargo net mounting points, cupholders and storage compartments. Thanks to triple-sealed doorframes, a complex flex and resonation-reducing floor pan plus reinforcements to minimize vibration and reduce noise, you can surround yourself with the sounds of Tucson's AM/FM/CD/MP3/Aux. Plug audio system. No matter where the road takes you, your comfort is our priority. The 4-way adjustable driver's seat with tilt steering (standard) and heated front seats (GL, GL V6, Limited) help make your drive more enjoyable.



**SOUND ALL AROUND.** The soundtrack to every adventure begins with the Tucson's AM/FM/CD/MP3/Aux. Plug audio system with four speakers. The GL, GL V6 and Limited also come standard with two tweeters to improve sound quality and deliver higher frequencies with clarity.

**CARGO-FRIENDLY.** Active lifestyles only stay that way if everybody can get where they're going with everything they need. The Tucson makes it easy with its cargo-packing possibilities plus fold-down rear seats (total cargo space with seat down is 1,856 litres) to help accommodate even the most irregularly shaped cargo.

*A safe road ahead.*



LIMITED MODEL IN CHAMPAGNE SILVER

09  
TUCSON



## s a f e t y

**SAFE AND SECURE.** The Tucson's wealth of standard safety features is proof of Hyundai's commitment to putting you first. Its Anti-lock Braking System (ABS) with Electronic Brake Force Distribution (EBD) and Brake Assist (BA) plus Electronic Stability Control (ESC) and Traction Control System (TCS)<sup>2</sup> technologies help protect occupants, by controlling the vehicle in adverse conditions. The National Highway Traffic Safety Administration (NHTSA) studies\* state that SUVs equipped with ESC experience 67% fewer single-vehicle crashes. Front and rear crumple zones further protect occupants in the case of a collision by absorbing the energy created during impact. And with airbags<sup>1</sup>, a steel unibody construction and LATCH child-seat anchors, it's clear that keeping you protected is our priority.



**ANTI-LOCK BRAKING SYSTEM.** Unfortunately, wet roads and sudden stops are still a part of driving. That's where our Anti-lock Braking System enters the picture. ABS prevents wheel lock-up and helps maintain steering control, even during emergency braking situations, by rapidly pulsing the brakes. So you can control steering to successfully maneuver around objects ahead of you.

**AIRBAG<sup>1</sup> PROTECTION ALL AROUND.** Every Tucson is equipped with the added security of dual front airbags<sup>1</sup>, while front side-impact airbags and front and rear roof-mounted side-curtain airbags are standard on the Limited for enhanced peace of mind.



# 09 TUCSON



LIMITED MODEL IN NAUTICAL BLUE



**DRIVE DEFECTS TO ZERO.** Hyundai embarked on its quality mission in 1999, when it launched its "Zero Defects" program. This initiative involves everyone – from design engineers to the factory workers on the line – and every aspect of the company's culture in a devout commitment to quality manufacturing across the board. The results are obvious.



**ONE OF CANADA'S BEST WARRANTIES.** Have the peace of mind that comes with Hyundai Auto Canada's standard 5-year/100,000 km Comprehensive Limited warranty\* along with 5-year/100,000 km Powertrain warranty – standard with every Tucson. We also provide a 3-year/Unlimited km Roadside Assistance Program which includes fuel delivery service, flat tire changing, lock-out service, towing service, and more. Just one toll-free call away, 24 hours a day. There are no deductibles and warranties are transferable. For further details on your warranty coverage, including terms and limitations, please consult the Service Passport that accompanies all new Hyundai vehicles or see your local Hyundai dealer.



**QUALITY** *There are a lot of companies that claim to build a quality product, making it hard for consumers to know when they're confronted with the real thing. By definition, quality refers to the highest standards. At Hyundai Auto Canada Corp., we are committed to bringing you the highest standards in everything we do. That's why we have invested billions of dollars into research, design, safety, testing, and manufacturing. And it's how we have the confidence to give you one of the best warranties in the industry.*

*From our R&D Technical Center in South Korea to our ISO manufacturing plant in Alabama, our commitment to quality is rooted in our belief in craftsmanship. Craftsmanship cannot be achieved by robots alone. It requires the expertise, artistry and creativity of people. Together, our state-of-the-art facilities and dedicated human resources ensure our vehicles are built with integrity from the first to the final detail. And, together, they deliver on Hyundai's promise to Canadians – to create a lineup of vehicles that meets the harshest critics' highest standards – yours.*

## ACCESSORY SOLUTIONS THAT SUIT YOU.

Hyundai is making its name on delivering unprecedented quality and value, offering Canadians a wide variety of lifestyle-friendly vehicles loaded with outstanding packages of standard features and premium extras. Individual needs call for individual solutions. That's why Hyundai goes out of its way to offer you a line of accessories designed to suit specific demands. With Hyundai's line of authorized parts and accessories, you are able to customize and adapt your vehicle to your lifestyle. From versatile quick-locking roof rack cross rails to stylish side visors, custom-fit your Tucson your way.

- 1 FRONT BUMPER GARNISH.** Protect your front bumper from dents and scratches with a stylish bumper garnish.
- 2 REAR BUMPER GARNISH.** Add a rugged dimension to your Hyundai with a durable rear bumper garnish. (2.7L only)
- 3 SIDE STEPS.** Stylish and functional, polished stainless steel side steps will add a rugged look to your vehicle.
- 4 RUBBER FLOOR MATS.** Protect the interior of your Hyundai from everyday dirt and debris with custom-made floor mats.
- 5 TRAILER HITCH KIT.** Designed to meet all your towing needs, a Hyundai hitch can accommodate a wide variety of hitch-mounted accessories. Kit includes the trailer hitch, ball mount and end cap. (Chrome ball not included.)
- 6 HITCH MOUNT BIKE CARRIER.** Don't let extra cargo put limits on your adventurous nature. The innovative swing down design of the hitch mount bike carrier ensures access to your vehicle's cargo area while holding up to four bikes.







CHAMPAGNE SILVER  
Interior: Grey



ARCTIC BLUE  
Interior: Black

Our vivid palette of exterior colours is the perfect way to complete your Tucson. Explore the options and choose the one that best reflects your personal style.



GRAPHITE GREY  
Interior: Black



EBONY BLACK  
Interior: Black



MESA RED  
Interior: Grey



NAUTICAL BLUE  
Interior: Grey



CRYSTAL SILVER  
Interior: Black

## EXTERIOR COLOURS

## INTERIOR COLOURS



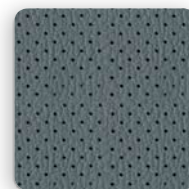
BLACK CLOTH



GREY CLOTH



BLACK LEATHER



GREY LEATHER



## TUCSON L FWD

### STANDARD EQUIPMENT INCLUDES:

16-inch Tires with 5 Double Spoke Alloy Wheels  
 2.0L, 140 hp, 16-valve, DOHC, 4-cylinder Engine with Continuously Variable Valve Timing (CVVT)  
 4-wheel Disc Brakes  
 5-speed Manual Transmission  
 60/40 Split Fold-down Rear Seatback  
 AM/FM/CD/MP3/Aux. Plug 4-speaker Audio System  
 Anti-lock Braking System (ABS) with Electronic Brake Force Distribution (EBD) and Brake Assist (BA)  
 Black Front Grille with Chrome Accents  
 Cabin Air Filter  
 Child-proof Rear Door Locks  
 Child-seat LATCH System  
 Cloth Seats and Interior Trim  
 Deluxe Cut-pile Carpeting  
 Driver's and Front Passenger's Vanity Mirror with Driver's Side Card Holder  
 Dual Front Airbags<sup>1</sup>  
 Electronic Stability Control (ESC) with Traction Control System (TCS)<sup>2</sup>  
 Energy-absorbing Steering Column  
 Fixed Centre Armrest with Dual Cupholders and 2-Tier Storage Box  
 Front and Rear Crumple Zones  
 Front-wheel Drive  
 Front Windshield Wiper De-icer  
 Ignition Immobilization System\*\*  
 Manual Day/Night Rearview Mirror  
 Map Lights  
 Overhead Sunglass Storage  
 Power-assisted Rack-and-Pinion Steering  
 Power Door Locks  
 Power-adjustable Heated Exterior Mirrors  
 Power Windows with Driver's Auto-down  
 Rear Window Washer/Wiper  
 Rear Window Defroster with Timer

Remote Releases, Hood and Fuel Filler Door  
 Roof-mounted Antenna  
 Roof Rack Side Rails  
 Seating:  
     Bucket Front Seats with Adjustable Headrests and Lumbar Support  
     Driver's and Front Passenger 4-way Adjustable Seat  
     Reclining Rear Seats with Adjustable Headrests  
 Suspension:  
     Front: MacPherson Struts with Stabilizer Bar  
     Rear: Multi-link with Stabilizer Bar and Gas Shock Absorbers  
 Three 12-volt Outlets  
 Tilt Steering Wheel  
 Tinted Glass  
 Underbody Skid Plate  
 Under Floor Cargo Storage



## GL FWD

### INCLUDES TUCSON L STANDARD EQUIPMENT PLUS:

Air Conditioning with Manual Temperature Controls  
 AM/FM/CD/MP3/Aux. Plug 6-Speaker Audio System  
 Heated Front Seats  
 Rear Privacy Glass  
 Remote Keyless Entry with Alarm

### Optional:

4-speed Automatic Transmission with SHIFTRONIC™  
 Cruise Control



## GL V6 FWD

### INCLUDES GL WITH AUTOMATIC PACKAGE EQUIPMENT PLUS:

2.7L, 173 hp, 24-valve, DOHC, V6 engine  
 235/60R16 Tires with 5-spoke Alloy Wheels  
 Body Colour Exterior Mirrors, Door and Rear Liftgate Handles  
 Chrome License Plate and Rear Garnish  
 Dual Tail Pipes

## GL V6 4WD

### INCLUDES GL V6 STANDARD EQUIPMENT PLUS:

Electronic 4-wheel Drive System with Lock Button  
 Fog Lights



## LIMITED FWD

### INCLUDES GL V6 EQUIPMENT PLUS:

Active Front Head Restraints  
 Fog Lights  
 Front Side-impact and Front and Rear Roof-mounted Side-curtain Airbags  
 Leather Seats and Interior Trim  
 Leather-wrapped Steering Wheel and Gear Shift Knob  
 Metal-grain Instrument Panel Surround  
 Power Glass Sunroof with One-touch Open  
 Trip Computer

## LIMITED 4WD

### INCLUDES LIMITED FWD EQUIPMENT PLUS:

Electronic 4-wheel Drive System with Lock Button

### Optional:

Body Colour or Two-tone Bumpers and Lower Bodyside Cladding (Limited only)



## PERFORMANCE

<b>Engine</b>	<b>L / GL</b>	<b>GL V6 / Limited</b>
Type	Inline 4-cylinder with 16-valve DOHC and CVT	24-valve DOHC V6
Displacement	2.0L (1,975 cc)	2.7L (2,656 cc)
Bore & Stroke (mm)	82.0 x 93.5	86.7 x 75.0
Compression Ratio	10.1:1	10.0:1
Horsepower @ RPM	140 @ 6,000	173 @ 6,000
Torque (lb-ft) @ RPM	136 @ 4,500	178 @ 4,000
<b>Curb Weight (kg)</b>	1,470 M/T, 1,481 A/T	1,529 GL V6, 1,609 Ltd
<b>Drive Configuration</b>	FWD	FWD/4WD Available
<b>Exhaust</b>	Single	Dual
<b>Electrical System</b>		
Battery	60 AH	68 AH
Alternator	13.5 V/90 AMP	13.5 V/120 AMP
Ignition	Electronic	Electronic
<b>Frame Construction</b>	Unitized Body	Unitized Body
<b>Steering</b>		
Type	Power-assisted Rack-and-Pinion	Power-assisted Rack-and-Pinion
Overall Ratio	16.2:1	16.2:1
<b>Towing Capacity (kg)</b>		
With Trailer Brake:	680	907
Without Trailer Brake:	454	454
<b>Transmission</b>	5-Speed Manual on L and GL models 4-Speed Automatic with SHIFTRONIC™ on GL V6 and LIMITED models (optional on GL)	
<b>Brakes</b>		
Front	Power-assisted Ventilated Discs	
Rear	Power-assisted Solid Discs	
Anti-lock Braking System (ABS) with Electronic Brake Force Distribution (EBD) and Brake Assist (BA)		
<b>Suspension</b>	Front: MacPherson Struts with Stabilizer Bar Rear: Multi-link with Stabilizer Bar/Gas Shock Absorbers	
<b>Tires</b>	P215/65 R16 on L and GL models P235/60 R16 on GL V6 and LIMITED models	
<b>Wheels</b>	5-double spoke 6.5J x 16" Aluminum Alloy on L and GL models 5-split spoke 6.5J x 16" Aluminum Alloy on GL V6 and LIMITED models	
<b>Fuel</b>		
<i>Fuel Consumption Estimates (L/100 km)</i>	<i>City</i>	<i>Highway</i>
5-Speed Manual Transmission (FWD)	10.5	7.6
4-Speed Automatic Transmission (FWD)	10.2	8.0
4-Speed Automatic Transmission (4WD)	—	—
<b>Fuel Tank Capacity (L)</b>	58	65
<b>Dimensions</b>	<i>Exterior (mm):</i>	<i>Interior (mm):</i>
Wheelbase:	2,630	Head Room:
Length:	4,325	Head Room with Sunroof:
Height:	1,730	Leg Room:
Width:	1,795	Shoulder Room:
Track — L / GL (Front/Rear):	1,540/1,540	Hip Room:
GL V6 / LIMITED (Front/Rear):	1,550/1,550	



L GL GL V6 LIMITED

## INTERIOR

Air Conditioning	Non-CFC with Manual Temperature Control	—	S	S	S
Audio System	AM/FM/CD/MP3/Aux. Plug with four Speakers	S	—	—	—
	AM/FM/CD/MP3/Aux. Plug with six Speakers	—	S	S	S
Carpet	Deluxe Cut-pile	S	S	S	S
Clock	Digital	S	S	S	S
Console	Overhead Sunglass Storage	S	S	S	S
	Fixed Centre Armrest with 2-Tier Storage	S	S	S	S
Cruise Control		—	S-A/T	S	S
Cupholders	Front Centre Console (2), Rear Centre Armrest (2)	S	S	S	S
DC Power Outlet (12v)	Front Centre Ashtray (1), Rear Seat Console (1), Rear Cargo Area (1)	S	S	S	S
Defogger	Front Side Windows	S	S	S	S
Defroster	Rear Window, Electronic with Timer	S	S	S	S
Door Trim	Cloth with Map Pocket	S	S	S	—
	Leather with Map Pocket	—	—	—	S
Gauges	Speedometer, Tachometer, Trip Odometer, Fuel	S	S	S	S
Glove Box	Lockable, Illuminated, Dividable	S	S	S	S
Illumination	Map Lights, Ashtray, Glove Box, Overhead Centre Light	S	S	S	S
Metal-grain Accents	Centre Stack	—	—	—	S
Mirrors	Driver and Front Passenger Vanity	S	S	S	S
	Inside Rearview, Manual Day/Night	S	S	S	S
Power Door Locks		S	S	S	S
Power Windows	Driver's Auto-down	S	S	S	S
Remote Releases	Hood	S	S	S	S
	Fuel Filler	S	S	S	S
Seats	Front Buckets with Adjustable Headrests	S	S	S	S
	Driver's 4-Way Adjustable with Lumbar Support	S	S	S	S
	Front Passenger 4-way Adjustable	S	S	S	S
	Heated Front Seats	—	S	S	S
	60/40 Split Fold-down Rear Seatback	S	S	S	S
Seat Trim	Cloth	S	S	S	—
	Leather	—	—	—	S
Steering Wheel	Leather-wrapped	—	—	—	S

S = Standard — = Not Available





		L	GL	GL V6	LIMITED
<b>EXTERIOR</b>					
Antenna	Micro, Roof-mounted	S	S	S	S
Body Cladding (Front/Rear)	Grey	—	—	S	0
	Body Colour	—	—	—	0
Fog Lights		—	—	S-4WD	S
Glass	Tinted	S	S	S	S
Headlights	Reflector-type	S	S	S	S
Mudguards (Front/Rear)		D	D	D	D
Outside Mirrors	Power-adjustable, Heated	S	S	—	—
	Body Colour, Power-adjustable, Heated	—	—	S	S
Privacy Glass	B-pillar Rearward	—	S	S	S
Roof Rack Side Rails		S	S	S	S
Sunroof	Power Tilt-and-Slide – One-touch Open	—	—	—	S
Wipers	Front 2-speed/Variable Intermittent with De-icer	S	S	S	S
	Rear Wiper/Washer	S	S	S	S

## SAFETY

Airbags <sup>1</sup>	Dual, Driver and Passenger	S	S	S	S
	Driver and Front Passenger, Side-impact	—	—	—	S
	Side-curtain (Front & Rear Passengers)	—	—	—	S
Active Head Restraints	Front Seats	—	—	—	S
Alarm System		—	S	S	S
Assist Grips	Three	S	S	S	S
Brakes	Front: Power-assisted Ventilated Discs	S	S	S	S
	Rear: Power-assisted Solid Discs	S	S	S	S
	Anti-lock Braking System (ABS) with Electronic Brake Force Distribution (EBD) and Brake Assist (BA)	S	S	S	S
Child Safety	Child-proof Rear Door Locks	S	S	S	S
	Child-seat LATCH System	S	S	S	S
Door Locks	Remote Keyless Entry	—	S	S	S
Electronic Stability Control (ESC) with Traction Control System (TCS) <sup>2</sup>		S	S	S	S
Ignition Immobilization System**		S	S	S	S
Restraint Systems	Front: 3-point Seatbelt with Adjustable Shoulder Belt Height	S	S	S	S
	Rear: 3-point Seatbelt	S	S	S	S
Steering Column	Energy-absorbing	S	S	S	S
Steering Wheel Lock	When Key Is Removed	S	S	S	S
Warning Lights	Door Ajar, Liftgate Ajar, ABS, ESC Off	S	S	S	S
	Low Fuel, Airbag (SRS), Check Engine, Temperature	S	S	S	S

## STANDARD WARRANTY

Coverage	One of Canada's best warranties				
	5-year/100,000 km Comprehensive Limited Warranty <sup>†</sup>	S	S	S	S
	5-year/100,000 km Powertrain Warranty	S	S	S	S
	3-year/Unlimited km Roadside Assistance Program <sup>††</sup>	S	S	S	S

S = Standard    0 = Optional    — = Not Available    D = Dealer Installed Option

Specifications, features, illustrations, accessories, materials and equipment and all other information shown in this brochure are based on the latest information available at the time of publication. Although descriptions are believed to be correct, accuracy cannot be guaranteed. Hyundai Auto Canada Corp. reserves the right to make any changes or modifications at any time, without notice or obligation, including, without limitation, in colour, specifications, features, accessories, materials, equipment and models. Some vehicles are shown with optional equipment. All Hyundai warranties have no deductible.

Fuel economy figures are based on manufacturer's testing and are used for comparison purposes only. Actual fuel efficiency may vary based on driving conditions and the addition of certain vehicle accessories.

<sup>†</sup> Hyundai's Comprehensive Limited Warranty coverage covers most vehicle components against defects in workmanship under normal use and maintenance conditions.

<sup>††</sup> Includes fuel delivery service, flat tire changing, lock-out service, towing service and more. Just one toll-free call away. 24 hours a day.

<sup>1</sup> The Supplemental Restraint (Airbag) System (SRS) is designed to work with the 3-point seatbelt system. The SRS deploys in certain frontal and/or side-impact conditions where significant injury is likely. The SRS is not a substitute for seatbelts, which must still be worn at all times.

Children under the age of 13 should be securely restrained in the rear seat. NEVER place a child-seat in the front seat of a Hyundai vehicle.

<sup>2</sup> Electronic Stability Control (ESC) and Traction Control System (TCS) are meant to enhance conscientious driving habits and are not a substitute for safe driving practices.

\* National Highway Traffic and Safety Administration statistical analysis of the effectiveness of electronic stability control systems – final report (July 2007).

\*\* CAN/ULC S338-98 compliant immobilizer may reduce insurance costs in some instances.

The Hyundai name, logo, product names, feature names, images and slogans are trade marks owned by Hyundai Auto Canada Corp.