

COMFORT

STEP UP TO THE PODIUM. How do you make the great-driving 2009 G6 SE Sedan even better? Add the available Podium Edition Package. The Podium Edition G6 includes a long list of upscale features, including an available no-charge power sunroof,* remote vehicle starter system, a power six-way driver's seat, a leather-wrapped steering wheel with sound system controls and more, all for a surprisingly affordable price. They also carry unique Podium Edition badging featuring the Vancouver 2010 Olympic logo, so you can drive a great car and show your support for Canada's elite athletes at the same time. Talk about a win-win situation.

1. If you take your driving seriously, you'll feel right at home with G6's cleanly styled analogue gauges and logical, well-placed controls.
*Optional power sunroof available at no-charge when specified. See your dealer for details.



G6 SE Sedan, shown in Midnight Blue Metallic with available Podium Edition Package.



EXTERIOR COLOURS

The exterior colours in this brochure are as close to the actual vehicle production colours as the printing process allows. For more accurate colour samples, ask your sales consultant to see the dealer vehicle colour display.

*Available at extra cost.



13 – Cranberry Metallic



17 – Quicksilver Metallic



37 – Midnight Blue Metallic



50 – Summit White



51 – Gold Mist Metallic¹



58 – Carbon Black Metallic*



75 – Dark Steel Gray Metallic²



78 – Blue Gold Crystal Metallic³



92 – Silver Green Metallic³



98 – White Diamond Tricoat^{4,*}

INTERIOR FABRICS



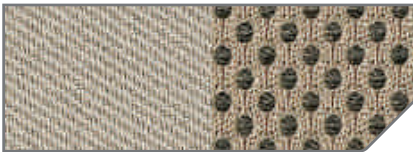
19B – Ebony Custom Cloth



70B – Light Taupe Custom Cloth



19C – Ebony Premium Cloth



70C – Light Taupe Premium Cloth



19 – Ebony Leather*



70 – Light Taupe Leather*

*Available two-tone accent seating available on GXP model and the GT Convertible Performance Package.

WHEELS



A – 17" x 7" custom 5-spoke high-vent wheel cover



B – 17" x 7" painted cast aluminum wheel



C – 17" x 7" Chrome-Tech cast aluminum wheel



D – 18" x 7" 5-spoke Chrome-Tech aluminum wheel



E – 18" x 7" 5-spoke Black Chrome-Tech flangeless aluminum wheel



F – 18" x 7" 5-spoke machine-faced flangeless aluminum wheel

EXTERIOR/INTERIOR COLOUR COMPATIBILITY

▼ EXTERIOR	INTERIOR ►	19 – Ebony	70 – Light Taupe
13 – Cranberry Metallic		•	•
17 – Quicksilver Metallic		•	•
37 – Midnight Blue Metallic		•	•
50 – Summit White		•	•
51 – Gold Mist Metallic ¹		•	•
58 – Carbon Black Metallic*		•	•
75 – Dark Steel Gray Metallic ²		•	•
78 – Blue Gold Crystal Metallic ³		•	•
92 – Silver Green Metallic ³		•	•
98 – White Diamond Tricoat ^{4,*}		•	•

1 – Available on G6 SE Sedan only.
2 – Not available on G6 GT Convertible.
3 – Available on G6 SE Sedan and GT models only.
4 – Not available on GXP models.
* Available at extra cost.

PONTIAC G6  IGNITE THE FEELING



2009 **G6**

191-09-B-055E



FUEL EFFICIENCY

THE 2009 G6

FREE YOUR INNER DRIVER. Does getting behind the wheel of a great car get your pulse pounding? Then the 2009 Pontiac G6 is for you. Available in a choice of Sedan, Coupe and hardtop Convertible body styles, G6 has the look of a pure-bred driving machine. The performance is thrilling, especially in GXP form with a 252 horsepower DOHC V6 engine under the hood. There's also an advanced ECOTEC 2.4-litre engine that delivers highway fuel consumption of just 5.9 L/100 km – better than a VW Jetta.* Inside, the cabin is spacious, comfortable, well equipped and – most important of all – completely focused on keeping you in total control. The 2009 G6. Let loose – and feel alive. pontiac.gm.ca

*When equipped with available 6-speed automatic transmission, based on GM Testing in accordance with approved Transport Canada test methods and latest competitive information available at time of printing. Your actual fuel consumption may vary.
NOTE TO READERS: Please consult this mini-brochure for details on 2009 G6 model and feature availability.
For additional information on any G6 model, ask your sales consultant for a copy of the 2008 G6 brochure.

PONTIAC G6  IGNITE THE FEELING



2009 G6 SPECIFICATIONS

SAFETY AND SECURITY	G6 SE SEDAN	G6 GT CPE/SDN	G6 GXP CPE/SDN	G6 GT CONVT.
Air bags – dual-stage, driver and front-passenger, frontal with Passenger Sensing System	S	S	S	S
Air bags – front-to-rear, side-impact head curtain	S	S	S	–
Air bags – driver and front-passenger, seat-mounted side-impact	–	–	–	S
Brake/transmission shift interlock	S	S	S	S
Door locks – power, programmable with lock-out protection	S	S	S	S
Door locks – rear doors, child-security	S	–/S	–/S	–
Headlights – Daytime Running Lights with automatic light control and 20-second delay off feature	S	S	S	S
Keyless entry system – remote, extended range	S	S	S	S
OnStar® In-Vehicle Communications and Assistance Service – includes 1 year of the Safe & Sound Plan*	S	S	S	S
Safety restraints – LATCH (Lower Anchors and top Tethers for Children), rear seats	S	S	S	–
StabiliTrak™ – electronic stability control system, includes Panic Brake Assist	O ¹	–	S	S
Theft-deterrent system – electronic immobilizer	S	S	S	S
Traction control – electronic, full-function, all-speed	S	S	S	S
MECHANICAL				
Battery – with run-down protection	S	S	S	S
Brakes – power, 4-wheel disc	S	S	S	S
Brakes – 4-wheel anti-lock braking system (ABS)	S	S	S	S
Drive – front-wheel	S	S	S	S
Engine – 2.4L ECOTEC I-4 VVT with SFI Horsepower – 164 @ 6400 rpm; Torque – 156 lb.-ft. @ 5000 rpm	S	–	–	–
Engine – 3.5L V6 with SFI Horsepower – 219 @ 5900 rpm; Torque – 219 lb.-ft. @ 3200 rpm	O ²	S	–	–
Engine – 3.5L V6 with SFI Horsepower – 217 @ 5800 rpm; Torque – 217 lb.-ft. @ 4000 rpm	–	–	–	S
Engine – 3.6L V6 VVT with SFI Horsepower – 252 @ 6300 rpm; Torque – 251 lb.-ft. @ 3200 rpm	–	–	S	–
Engine – 3.9L V6 VVT with SFI Horsepower – 222 @ 5600 rpm; Torque – 238 lb.-ft. @ 4000 rpm	–	–	–	O ³
Engine – block heater	O	O	O	O
Exhaust system – aluminized stainless steel	S	S	S	S
Exhaust system – chrome tip	–	S	–	S
Exhaust system – dual outlets with chrome tips	–	–	S	O ³
Steering – electric power, variable-effort, rack-and-pinion	S	–	–	–
Steering – hydraulic power, rack-and-pinion	O ²	S	S	S
Suspension – 4-wheel independent	S	S	S	S
Suspension – Touring	S	–	–	S
Suspension – Ride and Handling	–	S	S	–
Transmission – 4-speed automatic with overdrive	S	–	–	–
Transmission – 4-speed automatic with overdrive, includes Manual Driver Shift Control and 2nd gear start	–	S	–	S
Transmission – 6-speed automatic with overdrive, includes Manual Driver Shift Control and 2nd gear start	O ¹	–	S	–
Vehicle starter system – remote	O	S	S	S

For further information on the 2009 G6 see your local Pontiac dealer or visit pontiac.gm.ca. Pontiac is a brand of General Motors of Canada the Official Vehicle Partner of the Vancouver 2010 Olympic and Paralympic Winter Games.™ 2007, VANOC. Used under license. IMPORTANT: General Motors reserves the right to make changes at any time, without notice, in prices, colour, material, equipment, specifications, models and availability. Because some information may have been updated since the time of printing, please check with your dealer for complete details. Copyright ©2008 General Motors of Canada Limited. Printed in Canada, September 2008.

EXTERIOR	G6 SE SEDAN	G6 GT CPE/SDN	G6 GXP CPE/SDN	G6 GT CONVT.
Convertible top – power retractable hardtop	–	–	–	S
Fog lights	O ²	S	S	S
Glass – Solar-Ray®, tinted	S	S	S	S
Mirrors – folding, power remote control, black	S	S	–	S
Mirrors – folding, power remote control, body-colour	–	–	S	–
Mouldings – bodyside, body-colour	O	–/O	–	–
Spoiler – rear deck-lid	O ⁴	–/S	–/S	–
Spoiler – rear deck-lid, integrated	–	S/–	S/–	S
Sunroof – power, sliding glass panel with sunshade, express-open feature	O ⁵	O	O	–
Tires – P215/55R17 all-season, S-rated**	S	–	–	–
Tires – P225/50R17 all-season touring, S-rated**	O ²	S	–	–
Tires – P225/50R18 all-season touring, T-rated**	–	–	S	S
Wheels – 17" x 7" custom 5-spoke high-vent bolt-on cover (A)	S	–	–	–
Wheels – 17" x 7" painted cast aluminum (B)	O	S	–	–
Wheels – 17" x 7" Chrome-Tech cast aluminum (C)	–	O	–	–
Wheels – 18" x 7" 5-spoke Chrome-Tech aluminum (D)	–	–	S	O
Wheels – 18" x 7" 5-spoke Black Chrome-Tech aluminum, flangeless (E)	–	–	O	–
Wheels – 18" x 7" 5-spoke machine-faced aluminum, flangeless (F)	–	–	–	S
Windshield wipers – flat-blade, speed-sensitive with variable delay (intermittent)	S	S	S	S

INTERIOR

Air conditioning – manual	S	S	–	S
Air conditioning – automatic climate control	–	–	S	O ³
Auxiliary power outlet	S	S	S	S
Cargo convenience net	O	S	S	–
Console – front floor with armrest, storage, front and rear cupholders	S	S	S	S
Cruise control – steering wheel-mounted, electronic with resume, coast and decelerate/accelerate features	S	S	S	S
Defogger – electric rear-window	S	S	S	S
Floor mats – front and rear, carpeted	S	S	S	S
Heat ducts – rear-seat, floor	S	S	S	S
Instrumentation – analogue cluster (includes speedometer, tachometer, coolant temperature and fuel gauge)	S	S	S	S
Instrumentation – Driver Information Centre (includes clock, exterior temperature display, GM Oil Life Monitoring System and programmable features)	S	S	S	S
Instrumentation – tire pressure monitoring system	O	O	O	O
Lights – courtesy, illuminated entry/exit, delayed illumination and theatre dimming	S	S	S	S
Lights – dual front overhead courtesy/reading	–	S	S	S
Mirror – rear-view with electrochromic auto-dimming and compass	–	S	S	–
Steering column – tilt and telescopic adjustable	S	S	S	S
Steering wheel – leather-wrapped with sound system controls, includes leather-wrapped shifter and parking brake handle	O ^{1,4}	S	S	S
Sunshades – LH and RH padded with extensions; driver and front-passenger vanity mirrors	S	–	–	S
Sunshades – LH and RH padded with extensions; illuminated driver and front-passenger vanity mirrors	O ⁵	S	S	–
Trunk – release, power remote	S	S	S	S
Windows – power, driver's express-down and rear-passenger window lock-out features (passenger express-down on Coupe and Convertible)	S	S	S	S
Wood accents – simulated walnut burl interior trim ⁶	O	S	S	S

SEATS	G6 SE SEDAN	G6 GT CPE/SDN	G6 GXP CPE/SDN	G6 GT CONVT.
Custom cloth reclining front bucket seats	S	–	–	–
Premium cloth reclining front bucket seats	–	S	–	S
Reclining heated front bucket seats with leather-appointed seating surfaces and power 6-way driver seat adjuster	O	O	S	O
Power driver seat height adjuster and manual driver lumbar adjuster with driver and front-passenger seatback pockets	S	S	S	S
Seatback – rear, 60/40 split-folding	S	S	S	–
SOUND SYSTEMS				
All G6 sound systems include an electronically tuned AM/FM stereo with seek, scan, auto tone control, speed-compensated volume control, Radio Data System® (RDS), auxiliary audio input jack for iPod® or MP3 player, TheftLock® and digital clock				
AM/FM stereo with CD player	S	S	S	S
AM/FM stereo with in-dash 6-disc CD changer	O	O	O	O
XM Satellite Radio ¹	O	O	S	S
6-speaker premium sound system	S	–	–	–
Monsoon® 8-speaker high-performance 200-watt sound system	–	S	S	S

G6 PACKAGES

Convenience Package – includes rear deck-lid spoiler, remote vehicle starter system, leather-wrapped steering wheel, shifter and parking brake handle and power 6-way driver seat adjuster	O	–	–	–
Podium Edition Package – includes Podium Edition badging, power sunroof, rear deck-lid spoiler, remote vehicle starter system, leather-wrapped 3-spoke steering wheel, shifter and parking brake handle, driver and front-passenger illuminated visor vanity mirrors and power 6-way driver seat adjuster	O	–	–	–
SE 4-cylinder Performance Package – includes 6-speed automatic transmission with overdrive, Manual Driver Shift Control, 2nd gear start, StabiliTrak electronic stability control system, leather-wrapped steering wheel, shifter and parking brake handle	O	–	–	–
SE V6 Performance Package – includes 3.5L V6 engine, hydraulic power steering, fog lights and P225/50R17 touring tires, S-rated	O	–	–	–
GXP Street Edition Package – includes unique front fascia, polished braided stainless steel mesh upper and lower grilles, unique rear fascia, ground effect rocker extensions, body-colour exterior mirrors, polished chrome exhaust tips and GXP badging	–	–	S	–
GXP Street Edition Enhancements Package – includes performance hood with scoops and hammerhead-styled rear spoiler	–	–	O	–
GT Convertible Performance Package – includes 3.9L V6 VVT engine, dual exhaust outlets with chrome tips, automatic climate control, reclining heated front bucket seats with leather-appointed seating surfaces and power 6-way driver seat adjuster	–	–	–	O

S – Standard. O – Optional individually or in combination with other optional equipment.

1 – Included with available SE 4-cylinder Performance Package.

2 – Included with available SE V6 Performance Package.

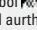
3 – Included with available GT Convertible Performance Package.

4 – Included with available Podium Edition or Convenience Package.

5 – Included with available Podium Edition Package.

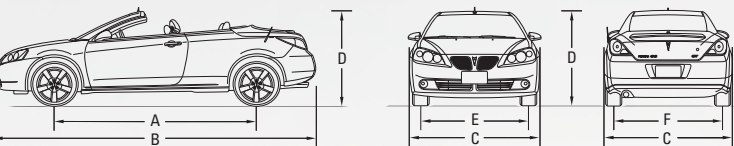
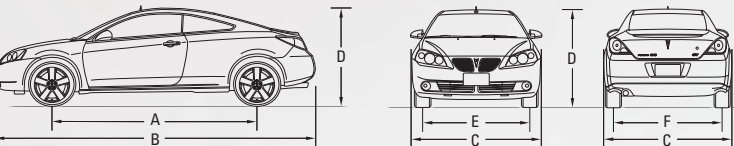
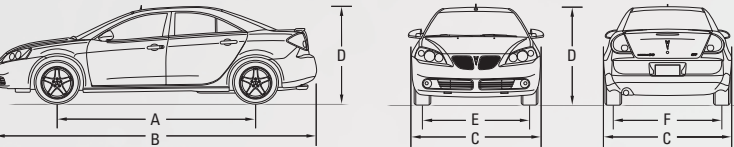
6 – Simulated walnut burl interior trim accents are standard with Light Taupe interior. Requires Ebony interior.

* OnStar services require vehicle electrical system (including battery), wireless service and GPS satellite signals to be available and operating for features to function properly. Subscription Service Agreement required. Call 1-888-4ONSTAR (1-888-466-7827) or visit onstar.ca for OnStar's Terms and Conditions, Privacy Statement and details and system limitations.

**All-season tires may not satisfy winter tire requirements in all regions of the country. Tires specifically designed for severe winter conditions and marked with the "winter tire" symbol  may be required during certain months or in certain regions. Contact your Provincial, Municipal or local road authority for information regarding which tires are required in your particular area.

¹ Available in 10 Canadian provinces and the 48 contiguous United States. Monthly subscription sold separately after 3 trial months.

DIMENSIONS



EXTERIOR, mm (in.)	SEDAN	COUPE	CONVERTIBLE
Wheelbase (A)	2852 (112.3)	2852 (112.3)	2852 (112.3)
Length (B)	4801 (189.0)	4803 (189.1)	4803 (189.1)
– with GXP and GT Street Package	4874 (191.9)	4874 (191.9)	–
Width (C)	1793 (70.6)	1788 (70.4)	1793 (70.6)
Height (D)	1450 (57.1)	1433 (56.4)	1440 (56.7)
Front tread (E)	1514 (59.6)	1519 (59.8)	1524 (60.0)
Rear tread (F)	1524 (60.0)	1534 (60.4)	1547 (60.9)

INTERIOR, mm (in.) front/rear

Headroom	991/927 (39.0/36.5)	988/922 (38.9/36.3)	975/917 (38.4/36.1)
Legroom	1072/956 (42.2/37.6)	1072/909 (42.2/35.8)	1072/869 (42.2/34.2)
Shoulder room	1407/1407 (55.4/55.4)	1377/1298 (54.2/51.1)	1372/1138 (54.0/44.8)
Hip room	1339/1318 (52.7/51.9)	1336/1267 (52.6/49.9)	1336/1163 (52.6/45.8)

CAPACITIES/WEIGHT

Trunk, L (cu. ft.)	396 (14.0)	340 (12.0)	357 (12.6) ^{1†}
Fuel tank, L (imp. gal.)	62 (13.5)	62 (13.5)	62 (13.5)
Curb weight (est.), kg (lb.) – SE	1499 (3305)	–	–
– GT	1568 (3457)	1549 (3415)	1749 (3855)
– GXP	1608 (3545)	1582 (3487)	–

^{††}With convertible top up. With convertible top down – 62 L (2.2 cu. ft.).

TOWING

2.4L ECOTEC I-4 VVT; 3.91/2.89^{††} final drive ratio; 454 kg (1000 lb.) maximum gross trailer weight*

3.5L V6; 3.05^{††}/3.29[†] final drive ratio; 454 kg (1000 lb.) maximum gross trailer weight*

3.9L V6 VVT; 3.69^{††} final drive ratio; 454 kg (1000 lb.) maximum gross trailer weight*

3.6L V6 VVT; 2.77 final drive ratio; 454 kg (1000 lb.) maximum gross trailer weight*

3.6L V6 VVT; 2.77 final drive ratio; 454 kg (1000 lb.) maximum gross trailer weight*

[†] When equipped with the 4-speed automatic transmission.

^{††} When equipped with the available 6-speed automatic transmission.

* When properly equipped, includes weight of trailer, cargo, passengers and equipment. All towing recommendations are subject to change. Trailer tongue load should be 10% of the maximum trailer weight but should not exceed the load rating specified for that vehicle, engine or hitch combinations. See your dealer or refer to the G6 Owner's Manual for details.

^{††} G6 SE Sedan.

^{††} G6 GT models.

^{††} Available on G6 GT Convertible.