



**LEXUS**  
THE PURSUIT OF PERFECTION.

IS  
SERIES

2010 LEXUS





Vehicle shown with available equipment.

## THE PURSUIT OF PERFECTION.

It is a philosophy that extends well beyond the confines of meticulously assembled sheet metal. An approach to the automobile not as a machine, but rather, an art form. Every curve, deliberate. Every detail, inspired. And where every aspect of the ownership experience is intended to be as rewarding and accommodating as the vehicles themselves. Because while there are certainly easier ways to build an automobile, pursuing perfection is the only way to create a Lexus.

With advanced technology in every 2010 IS Series, you can experience the comfort of owning a true luxury vehicle, and enjoy all of life's perfect moments.







## THE 2010 IS SERIES

One of the most distinctive vehicles from Lexus actually comes in three exciting forms. The entire IS Series emphasizes innovation and design with special weight given to race-like power and performance. But each vehicle stands alone—projecting a robust personality and unique appeal. The IS F is the fastest, most dominant production vehicle we've ever produced. The IS 350 and IS 250's design was inspired by the exclusive world of racing. And the ISC features a precision-engineered hardtop that folds from coupe to convertible in seconds flat. Despite their differences, each is crafted purely for the driver's pleasure. In fact, choosing one may be the most difficult task an owner will face. Lucky you.



# OPEN FOR ANYTHING.

Take your adventurous side out for a ride in the first-ever IS Convertible. Dynamic performance and handling keep your adrenaline pumping while cool innovations keep passengers comfortable and engaged. Among those available: our most advanced NAV<sup>1</sup> to help you navigate the night, heated and ventilated front seats designed specifically for the cabin when the top is up or down, and one-touch fold-and-return front seats for easy access for friends. To take it all to the next level, push the button on the dash to turn your coupe into a convertible. Thirteen electric motors and 33 sensors act in seamless unison to pull it off in just 20 seconds flat—fastest in its class.<sup>17</sup> Only the speed of its 0 to 100 km/h is more impressive. So go ahead. Live a little—a lot.







Vehicle shown with available equipment.





Though you'll love pushing it to asphalt-punishing speeds, slow down and take time getting to know all about the IS F. Its story began when a covert team of Lexus engineers tossed out the rulebook and demanded uncompromising power and performance. The results are definitive. A 5.0-litre V8 generates an impressive 416 horsepower,<sup>3</sup> Sport Direct-Shift transmission boasts manual upshifts that are among the world's fastest. Its 0 to 100 km/h? A searing 4.8 seconds.<sup>3,4</sup> This is engineering to be in awe of. This is the IS for true hardcore performance enthusiasts.



SITTING SO STILL,  
YOU'D NEVER KNOW  
WHAT IT'S CAPABLE OF.



Vehicle shown with available equipment.



JUST GETTING FROM A TO B  
IS OBVIOUSLY NOT  
THE POINT.

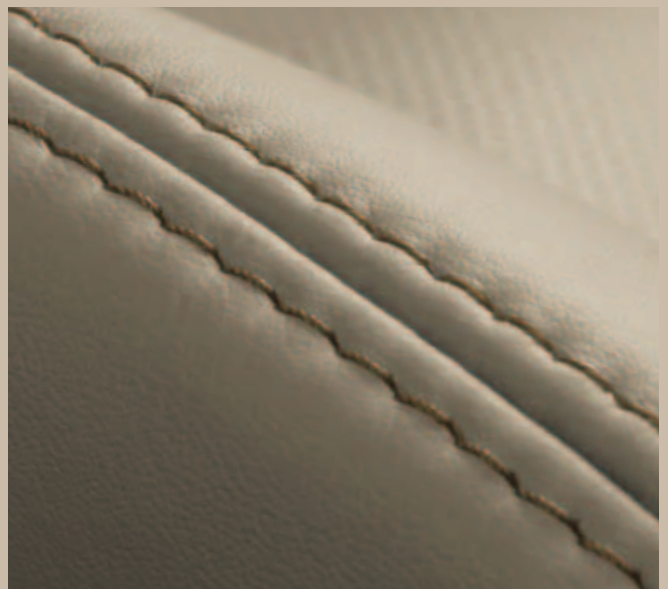
As rewarding as it is to commute or run errands in, the IS is really designed for the bold pursuit of pleasure. There are reminders at every turn. The snug cockpit feel of the interior. Bolstered seats wrapped in available leather trim. The fully loaded sound of the available Mark Levinson® Surround Sound Audio System.<sup>2</sup> Even the available Navigation System<sup>1</sup> is geared for exhilaration. Our most advanced yet, it can be controlled with casual speech through the voice-command system.







Vehicle shown with available equipment.





The speed and power make it an IS. But the luxury and craftsmanship make it a Lexus. Detailing and nuances are always key. The available leather trim, for example, is hand-chosen and made only from premium full-grain stocks.





# REMARKABLE HOW MOTIVATING G-FORCES CAN BE.



To give extra control over the air/fuel ratio, the IS 350 and IS F use both a port and direct injector that can add fuel straight into the combustion chamber.



○ Six-speed automatic Electronically Controlled Transmission with intelligence (ECT-i) on IS 250 and IS 350

○ Sequential paddle shift

○ Tier 2 Bin 5 Emissions Rating



Gaining power by only increasing engine size is archaic thinking. Instead, we've been able to make our vehicles more powerful without altering engine size at all. We do it with intelligent engineering. For example, our port and direct fuel-injection system that's employed on the IS 350, IS 350 C and IS F. It uses a low-pressure injector to add fuel conventionally to the intake port and then a high-pressure injector to add fuel directly into the combustion chamber. It works in conjunction with an innovatively contoured piston. The piston's shape directs a richer concentration of gasoline toward the spark plug so the combustion response is more intense and forceful. The overall result? Improved efficiency, better mileage and an ample power boost during all types of driving conditions.

#### RACE-INSPIRED INSTRUMENT PANEL

Electroluminescent tachometer and speedometer needles illuminate from base to tip and sweep across their dials at the engine's start. The outer rings can also be set to glow amber or red when the vehicle reaches a specified speed or RPM. Paddle shifters mounted on the steering wheel push drivers even closer to the track (automatic only).



#### ALUMINUM SPORT PEDALS

The design of the IS 350 and IS 250 was inspired by the world of racing. Available aluminum sport pedals (standard on IS C, IS F), dual chrome exhaust tips (IS Sedan, IS C) and an adjustable RPM shift light all contribute to the vehicle's iconic race-like style.



#### PUSH-BUTTON START

Press the brake pedal and the IS's ignition button glows green, meaning the engine is primed and ready to growl. With a simple push of the button, you're off.

## THE DEALERSHIP EXPERIENCE

When you visit one of our dealerships, make yourself at home by helping yourself to a beverage and internet access.<sup>†</sup> When picking up your new Lexus, our associates will make the transition seamless. We can help you with everything from setting your favourite radio stations to connecting and transferring your compatible cell phone's contacts to the available *Bluetooth*<sup>®</sup> system on your vehicle. Rest assured your car will experience the finest treatment as well, with a complimentary car wash with every service.

## CLUB LEXUS

A complimentary Club Lexus membership is offered to all new, pre-owned or leased Lexus owners. Club Lexus provides an exceptional compilation of services, offers, special events, and pertinent information that's of interest to Lexus drivers. You can also view your service history, the status of your factory warranty or Extra Care Protection (ECP) coverage, and the current status of your Lexus Financial Services (LFS) loan or lease. Sign up today and start taking advantage of all of the features at [www.clublexus.ca](http://www.clublexus.ca).

## LEXUS LIFESTYLE COLLECTION

Enhance your ownership experience even further with the "The Lexus Lifestyle Collection" Catalogue. Every year, Lexus assembles a wide range of brand name products that exemplify the finest design and craftsmanship in the world, which include designer luggage, Lexus apparel, stunning watches, Titanium golf clubs and much more. An exceptional item can be found for every driver.

To learn more about the various exclusive services that Lexus offers, please visit [www.lexus.ca](http://www.lexus.ca).

## SERVICE COMMITMENT

On top of enjoying the highest quality product, Lexus also delivers through a professional Dealer network, a unique and uncompromising level of after-sales service: First Class Service Concept. The highest level of professionalism and vehicle support ensure that the Lexus ownership experience is as luxurious as the vehicles.

### MAINTENANCE

We offer the first two scheduled maintenance services at no charge to you. The first service at 1,600 km will include a thorough vehicle inspection and a road test. The second inspection at 8,000 km will include a change of engine oil and oil filter.

### EXTRA CARE PROTECTION

Extend beyond the new vehicle warranty and enhance your peace of mind with Lexus Extra Care Protection.

### WARRANTY

Our Lexus Warranty Comprehensive Coverage includes:

- 48 months/80,000 km (includes tires).
- Powertrain: 72 months/110,000 km.
- Corrosion Perforation: 72 months/unlimited kilometres.
- Major Emission Control Components: 96 months/130,000 km.

Please see your Lexus Dealer for details.

Lexus will even provide five days of alternate transportation if your vehicle is required to stay at the dealership for an extended period of time due to a warrantable condition.

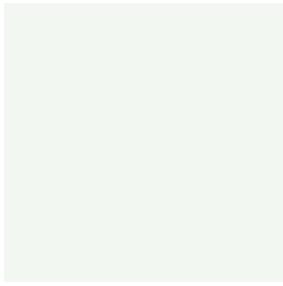
### ROADSIDE ASSISTANCE

As a proud owner of a Lexus vehicle, you won't have to worry about obtaining assistance when mishaps requiring Emergency Roadside Service or Mechanical Breakdown Towing are needed. Throughout Canada and the continental U.S., our Central Emergency Roadside Services Operator will always be there to ensure you receive prompt, efficient services from one of the many facilities qualified under our approved Roadside Assistance Program. Twenty-four hours a day, 365 days a year, we will be there to help.

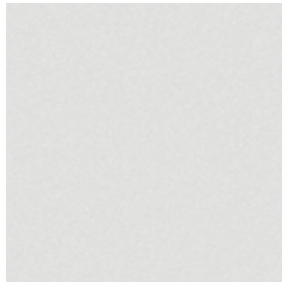
<sup>†</sup>Internet is available in most Lexus locations.



# EXTERIOR COLOURS



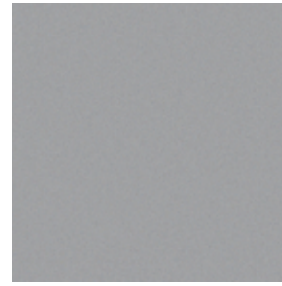
0077  
Starfire Pearl



01F2  
Mercury Metallic



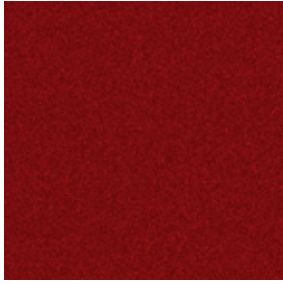
01G0  
Smoky Granite Mica



01G1  
Tungsten Pearl



0212  
Obsidian



03R1  
Matador Red Mica



04T5  
Truffle Mica



08U0  
Black Sapphire Pearl



08U1  
Ultrasonic Blue Mica

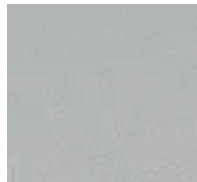
# INTERIOR COLOURS AND WOOD TRIMS



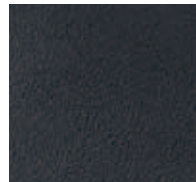
Ecu  
Leather



Alabaster  
Leather



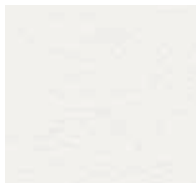
Light Grey  
Leather



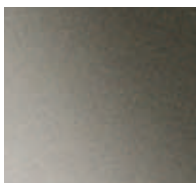
Black  
Leather



Terra Cotta  
Leather



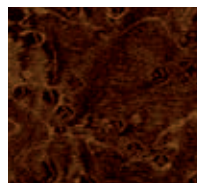
White/Black  
Leather



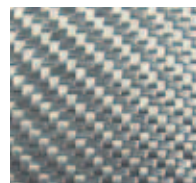
Metallic  
Finish



Dark Grey Bird's-Eye  
Maple



Espresso Bird's-Eye  
Maple



Aluminized  
Fiberglass

# COLOUR AVAILABILITY

	Ecu Leather	Alabaster Leather	Light Grey Leather	Black Leather	Terra Cotta Leather	White/Black Leather
Starfire Pearl	■	●		■*▲●	▲	
Mercury Metallic				▲	▲	
Smoky Granite Mica		●	■	■*▲●	▲	
Tungsten Pearl		●	■	■*●		
Obsidian	■	●	■	■*▲●		▲
Matador Red Mica	■	●		■*▲●		▲
Truffle Mica	■			■*		
Black Sapphire Pearl	■	●		■*●		
Ultrasonic Blue Mica		●		▲●		▲
Metallic Finish TRIM	■		■	■		
Dark Grey Bird's-Eye Maple TRIM		●	■	■●		
Espresso Bird's-Eye Maple TRIM	■	●		●		
Aluminized Fiberglass TRIM				▲	▲	▲

Visit our Web site and try on a colour. [lexus.ca](http://lexus.ca)

\*IS250 is standard with black sports cloth seating surfaces, leather-trimmed seating surfaces are available. IS350 is standard with leather-trimmed seating surfaces. Premium perforated leather seating surfaces are available on select IS Sedan models. Colours and interiors are subject to change during model year. Please see your Lexus Dealer for details.

■ IS ● ISC ▲ ISF

## IS + ISC WHEELS



16-inch 6-spoke alloy wheels  
STANDARD



17-inch 10-spoke alloy wheels  
STANDARD



18-inch 5-spoke alloy wheels  
STANDARD on ISC



18-inch split 5-spoke alloy wheels  
AVAILABLE

## IS + ISC BODY AND DIMENSIONS

### HEADROOM front/rear

990/937 mm - 39.0/36.9 in (IS)  
973.5/917.5 mm - 38.3/36.1 in (ISC)

### SHOULDER ROOM front/rear

1,381/1,338 mm - 54.4/52.7 in (IS)  
1,378/1,136 mm - 54.2/44.7 in (ISC)

### HEIGHT

1,415 mm/55.7 in (ISC)  
1,425 mm/56.1 in (ISRWD)  
1,440 mm/56.7 in (ISAWD)



WIDTH 1,800 mm/70.9 in

### TRUNK CAPACITY

378 litres/13.3 cubic feet

### FUEL-TANK CAPACITY

65 litres/14.3 gallons

### LEGROOM

front/rear  
1,115/777 mm - 43.9/30.6 in



WHEELBASE 2,730 mm/107.4 in

OVERALL LENGTH 4,575 mm/180.1 in

### TRUNK CAPACITY

306 litres/10.8 cubic feet  
(max, roof up)

### FUEL-TANK CAPACITY

65 litres/14.3 gallons

### LEGROOM

front/rear  
1,121/658 mm - 44.1/25.9 in



WHEELBASE 2,730 mm/107.5 in

OVERALL LENGTH 4,635 mm/182.5 in



## IS + ISC ENGINE

### IS 350 + IS 350 C

<b>TYPE</b>	60° V6, aluminum block and heads, direct and port fuel injection
<b>DISPLACEMENT</b>	3.5 litres
<b>VALVETRAIN</b>	Four cam, four valves per cylinder, with Dual Variable Valve Timing with intelligence (Dual VVT-i)
<b>COMPRESSION RATIO</b>	11.8:1
<b>HORSEPOWER AT RPM</b>	306 hp @ 6,400 <sup>3</sup>
<b>TORQUE AT RPM</b>	277 lb-ft @ 4,800 <sup>3</sup>
<b>EMISSION RATING</b>	Tier 2 Bin 5 Emissions Rating

### IS 250 + IS 250 C

<b>TYPE</b>	60° V6, aluminum block and heads, direct fuel injection
<b>DISPLACEMENT</b>	2.5 litres
<b>VALVETRAIN</b>	Four cam, four valves per cylinder, with Dual Variable Valve Timing with intelligence (Dual VVT-i)
<b>COMPRESSION RATIO</b>	12.0:1
<b>HORSEPOWER AT RPM</b>	204 hp @ 6,400 <sup>3</sup>
<b>TORQUE AT RPM</b>	185 lb-ft @ 4,800 <sup>3</sup>
<b>EMISSION RATING</b>	Tier 2 Bin 5 Emissions Rating

## IS + ISC DRIVETRAIN

### IS 350 + IS 350 C

<b>DRIVE WHEELS</b>	Rear-wheel drive (RWD), with standard Vehicle Dynamics Integrated Management (VDIM) <sup>7</sup>
<b>TRANSMISSION</b>	Six-speed paddle-shift-sequential automatic Electronically Controlled Transmission with intelligence (ECT-i)

### IS 250 + IS 250 C

<b>DRIVE WHEELS</b>	Rear-wheel drive (RWD), with standard Vehicle Dynamics Integrated Management (VDIM) <sup>7</sup> Available with All-Wheel Drive (AWD) <b>IS 250</b>
<b>TRANSMISSION</b>	Six-speed manual transmission (standard with RWD) Six-speed paddle-shift-sequential automatic Electronically Controlled Transmission with intelligence (ECT-i) (Available with RWD, standard with AWD)

## IS + ISC GENERAL

<b>TYPE</b>	<b>IS</b> Five-passenger luxury sport sedan
	<b>ISC</b> Four-passenger retractable hardtop luxury sport coupe <sup>17</sup>
<b>CURB WEIGHT</b>	<b>IS 350 A/T</b> 1,600 kg/3,527 lb
	<b>IS 250 RWD A/T</b> 1,558 kg/3,435 lb
	<b>IS 250 RWD M/T</b> 1,567 kg/3,455 lb
	<b>IS 250 AWD A/T</b> 1,656 kg/3,651 lb
	<b>IS 350 C A/T</b> 1,760 kg/3,880 lb
	<b>IS 250 C A/T</b> 1,730 kg/3,814 lb
	<b>IS 250 C M/T</b> 1,742 kg/3,840 lb

## IS + ISC PERFORMANCE

### IS 350 + IS 350 C

<b>TOP TRACK SPEED</b>	<b>IS 350</b> 230 km/h <sup>3,4</sup>
(electronically limited)	<b>IS 350 C</b> 227 km/h <sup>3,4</sup>
<b>FUEL ECONOMY ESTIMATES</b>	
(city/highway/combined)	<b>IS 350 + IS 350 C</b> 11.5/7.9/9.9 L/100 km
	25/36/29 mpg <sup>5</sup>
<b>AERODYNAMIC DRAG COEFFICIENT</b>	<b>IS 350</b> 0.28
	<b>IS 350 C</b> 0.29
<b>TURNING CIRCLE</b>	<b>IS 350</b> 10.2 m/33.5 ft
	<b>IS 350 C</b> 10.9 m/35.8 ft

### IS 250 + IS 250 C

<b>TOP TRACK SPEED</b>	<b>IS 250 A/T</b> 225 km/h <sup>3,4</sup>
(electronically limited)	<b>IS 250 M/T</b> 230 km/h <sup>3,4</sup>
	<b>IS 250 AWD + IS 250 C A/T</b> 210 km/h <sup>3,4</sup>
	<b>IS 250 C M/T</b> 215 km/h <sup>3,4</sup>
<b>FUEL ECONOMY ESTIMATES</b>	
(city/highway/combined)	<b>IS 250 A/T + IS 250 C A/T</b> 9.8/6.7/8.4 L/100 km
	29/42/34 mpg <sup>5</sup>
	<b>IS 250 M/T + IS 250 C M/T</b> 11.6/7.6/9.8 L/100 km
	24/37/29 mpg <sup>5</sup>
	<b>IS 250 AWD</b> 10.5/7.6/9.2 L/100 km
	27/37/31 mpg <sup>5</sup>
<b>AERODYNAMIC DRAG COEFFICIENT</b>	<b>IS 250</b> 0.28
	<b>IS 250 C</b> 0.29
<b>TURNING CIRCLE</b>	<b>IS 250 RWD</b> 10.2 m/33.5 ft
	<b>IS 250 AWD</b> 10.8 m/35.5 ft
	<b>IS 250 C</b> 10.9 m/35.8 ft

## IS + ISC CHASSIS

### IS 250 + IS 250 C + IS 350 + IS 350 C

**SUSPENSION** Front: Independent, double-wishbone with coil springs, monotube gas-pressured shock absorbers and hollow stabilizer bar

Rear: Independent, multi-link with coil springs, inverted monotube gas-pressurized shock absorbers and stabilizer bar

**STEERING** Electronic Power Steering (EPS) system

**BRAKES** Four-wheel power-assisted discs with four-sensor, four-channel Antilock Braking System (ABS), Electronic Brake-force Distribution (EBD) and Brake Assist (BA)<sup>6</sup>

### WHEELS AND TIRES

**IS 250 RWD** Standard:  
16-inch 6-spoke alloy wheels with performance summer radial tires P205/55R16

**IS 250 AWD** 17-inch 10-spoke alloy wheels with all-season tires P225/45R17

**IS 350** 17-inch 10-spoke alloy wheels with all-season tires P225/45R17 (front), P245/45R17 (rear)

**IS 250 C + IS 350 C** 18-inch 5-spoke alloy wheels with all-season tires P225/40R18 (front), P255/40R18 (rear)

### Optional:

**IS 250 RWD** 17-inch 10-spoke alloy wheels with all-season tires P225/45R17 (front), P245/45R17 (rear)

**IS 250 RWD + IS 350** 18-inch split-5-spoke alloy wheels with all-season tires P225/40R18 (front), P255/40R18 (rear)

## IS F



19-inch BBS forged aluminum alloy wheels  
STANDARD

## IS F ENGINE

<b>TYPE</b>	90° V8, aluminum block and heads, direct and port fuel injection
<b>DISPLACEMENT</b>	5.0 litres
<b>VALVETRAIN</b>	Four cam, four valves per cylinder, with Dual Variable Valve Timing with intelligence (Dual VVT-i) and Electronic Intake Valve Timing (VVT-iE)
<b>COMPRESSION RATIO</b>	11.8:1
<b>HORSEPOWER AT RPM</b>	416 hp @ 6,600 <sup>3</sup>
<b>TORQUE AT RPM</b>	371 lb-ft @ 5,200 <sup>3</sup>
<b>EMISSION RATING</b>	Tier 2 Bin 5 Emissions Rating

## IS F DRIVETRAIN

<b>DRIVE WHEELS</b>	Rear, with Sport Vehicle Dynamics Integrated Management (Sport VDIM) <sup>7</sup>
<b>TRANSMISSION</b>	Eight-speed, Sport Direct-Shift automatic transmission, metal plated paddle shifters

## IS F PERFORMANCE

<b>TOP TRACK SPEED</b>	273 km/h <sup>3,4</sup> (electronically limited)
<b>FUEL ECONOMY ESTIMATES</b>	13.0/8.5/11.0 L/100 km (city/highway/combined) 22/33/26 mpg <sup>5</sup>
<b>AERODYNAMIC DRAG COEFFICIENT</b>	0.30
<b>TURNING CIRCLE</b>	10.2 m/33.5 ft

## IS F GENERAL

<b>TYPE</b>	Four-passenger luxury sport sedan
<b>CONSTRUCTION</b>	Welded-steel unibody
<b>CURB WEIGHT</b>	1,715 kg/3,780 lb

## IS F BODY AND DIMENSIONS

**HEADROOM**  
front/rear with moonroof  
945.7/931.7 mm - 37.2/36.7 in

**SHOULDER ROOM**  
front/rear  
1,381/1,338 mm - 54.4/52.7 in

**HEIGHT**  
1,415 mm/55.7 in

**WIDTH** 1,815 mm/71.5 in



**TRUNK CAPACITY**  
378 litres/13.3 cubic feet

**FUEL-TANK CAPACITY**  
64 litres/14.1 gallons

**LEGROOM**  
front/rear  
1,115/780 mm - 43.9/30.7 in



**WHEELBASE** 2,730 mm/107.4 in

**OVERALL LENGTH** 4,660 mm/183.5 in

## IS F CHASSIS

**SUSPENSION** Front: Independent, double-wishbone with high-mount upper arms, coil springs, monotube gas-pressurized shock absorbers and hollow stabilizer bar

Rear: Independent, multi-link with low-mount upper arms, coil springs, monotube gas-pressurized shock absorbers and stabilizer bar

**STEERING** Electronic Power Steering (EPS) system, progressive power-assisted rack-and-pinion

**BRAKES** Four-wheel power-assisted discs manufactured by Brembo<sup>®</sup>, with four-sensor, four-channel Antilock Braking System (ABS), Electronic Brake-force Distribution (EBD) and Brake Assist (BA)<sup>6</sup>

**WHEELS AND TIRES** 19-inch BBS forged aluminum alloy wheels with performance summer radial tires P225/40R19 (front), P255/35R19 (rear)



## STANDARD LUXURY FEATURES

### LUXURY AND CONVENIENCE

SmartAccess<sup>15</sup> with push-button Start/Stop  
Dual-zone automatic climate control with interior air filter (IS 350, IS 350 C include smog sensor and automatic recirculation mode)  
Power tilt-and-telescopic steering column (IS C, IS F)  
Lexus Memory System to control power driver's seat (except lumbar), outside mirrors and steering wheel (IS C, IS F)  
Power tilt-and-slide moonroof with one-touch open/close and sliding sunshade (IS F)  
Power-retractable folding hardtop (IS C)  
Power windows with one-touch auto open/close feature (IS sedan, IS F)  
Power windows with front one-touch auto open/close feature (IS C)  
Remote-linked window and moonroof opening (if equipped)  
Retained accessory power for windows and available moonroof  
Electrochromic (auto-dimming) inside rearview mirror  
Power door locks  
Cruise control  
Centre console with sliding armrest, storage bin, USB and minijack input, and accessory outlet  
Front-door storage pockets (foldable on IS sedan, IS F)  
HomeLink<sup>®16</sup> universal transceiver to operate compatible garage, gate, home lighting and home security systems  
Illuminated entry system with fadeout  
Dual chrome exhaust tips (Quad exhaust tips IS F)  
Trunk pass-through (IS sedan, IS F)  
Carpeted floor mats

### SEATING AND TRIM

Metallic dash accents (IS 250)  
Aluminized fiberglass interior trim (IS F)  
Sport fabric-trimmed seat surfaces (IS 250)  
Leather-trimmed seat surfaces (IS 350, IS C)  
Leather-trimmed white/black or terra cotta sport seat surfaces (IS F)  
Leather-trimmed steering wheel and Metallic shift knob (IS sedan, IS F)  
Leather-trimmed steering wheel (IS C)  
Adjustable driver's and front passenger's seats (IS 250 RWD)  
Driver's power seat (IS 250 AWD)  
Driver's and front passenger's (including lumbar) power seats (IS 350, IS C, IS F)  
Easy-entry power front passenger seat slide (IS C)  
Heated front seats (IS 350, IS F)  
Heated and ventilated front seats (IS C)  
Height-adjustable headrests for all seats with foldable rear headrests (IS sedan and IS F, remote foldable on IS C)

### COMMUNICATION, AUDIO and NAVIGATION

Lexus Premium Sound System with Automatic Sound Levelizer (ASL) and in-dash, single-feed, six-disc CD auto-changer, 13-speaker (IS sedan, IS F), 8-speaker (IS C)  
In-glass antenna with FM-diversity system (IS sedan, IS F)  
XM<sup>®</sup> Satellite Radio<sup>1,10</sup>  
USB and auxiliary iPod<sup>™8</sup>/MP3/Windows Media Audio (WMA) port  
*Bluetooth*<sup>®</sup> capability<sup>11</sup>

### INSTRUMENTATION AND CONTROLS

Steering-wheel-mounted audio and display controls  
Electroluminescent instrumentation with startup sequence  
Illuminated interior electronic trunk-lid and fuel-filler door releases  
Lexus Personalized Settings (LPS) to customize select electronic functions

## STANDARD SAFETY AND SECURITY FEATURES

### SAFETY

Four-wheel power-assisted disc brakes (Brembo<sup>®</sup> brakes on IS F)  
Four-sensor, four-channel Antilock Braking System (ABS)  
Vehicle Dynamics Integrated Management System (VDIM)<sup>7</sup>  
Vehicle Stability Control (VSC)<sup>7</sup>  
Traction Control (TRAC)  
Brake Assist (BA)<sup>6</sup>  
Electronic Brake-force Distribution (EBD)  
Tire Pressure Monitor System<sup>13</sup>  
Bi-Xenon High-Intensity Discharge (HID) headlamps with dynamic auto-levelling (IS C, IS F)  
Adaptive Front Lighting System (AFS) (IS C, IS F)  
Automatic on/off projector-beam headlamps with auto-off delay  
Integrated foglamps  
Water-repellent front-door glass  
Variable intermittent windshield wipers with mist cycle  
Rear-window defroster with auto-off timer  
Power-adjustable heated outside mirrors with puddle lamps and integrated turn indicators (IS sedan, IS C)  
Power-adjustable heated outside mirrors with puddle lamps (IS F)  
Driver's and front passenger's advanced airbag system (SRS)<sup>14</sup> with front passenger's twin-chamber airbag (SRS)<sup>14</sup>  
Front seat-mounted side airbags (SRS)<sup>14</sup>  
Front and rear side curtain airbags (SRS)<sup>14</sup>  
Driver's and front passenger's knee airbags (SRS)<sup>14</sup>  
Three-point seatbelts for all seating positions, pre-tensioners with force limiters for front (all models) and outboard rear seats (IS sedan, IS F)  
Automatic Locking Retractor/Emergency Locking Retractor (ALR/ELR) seatbelts for all passenger seating positions. Emergency Locking Retractor (ELR) only for driver's seat  
Height-adjustable front shoulder belt anchors (IS sedan, IS F)  
Child Restraint Seat (CRS) tether anchor brackets for rear outboard seating positions  
Highly rigid body structure with front and rear crumple zones  
Side-impact door beams  
Reinforcements in pillars  
Impact-dissipating upper interior trim (IS sedan, IS F)  
Collapsible steering column

### SECURITY

Vehicle theft-deterrent and engine-immobilizer system  
Tool kit  
Wheel locks  
First aid kit

## IS 250 RWD PACKAGES

### LEATHER PACKAGE

- Leather-seat surfaces
- Heated driver's and passenger's front seats
- 10-way power adjustable (include lumbar) driver's and front passenger's seats
- 17-inch alloy wheels with P225/45R17 front and P245/45R17 rear all-season tires

### LEATHER W/MOONROOF PACKAGE

- Includes Leather Package (IS 250 RWD) plus:
- Power tilt-and-slide moonroof

### LEATHER W/MOONROOF AND NAVIGATION PACKAGE

- Includes Leather w/Moonroof Package plus:
- Voice-activated HDD Navigation System<sup>1</sup> with backup camera<sup>9</sup>

### F SPORT PACKAGE

- Includes Leather w/Moonroof Package plus:
- Bi-Xenon High-Intensity Discharge (HID) headlamps
  - Adaptive Front Lighting System (AFS)
  - 18-inch split-5-Spoke aluminum alloy wheels with P225/40R18 front and P255/40R18 rear all-season tires
  - Premium leather seat surfaces
  - Black coloured IS F sport seats
  - Heated and ventilated front seats
  - Stainless steel scuff plates
  - 3-spoke IS F steering wheel
  - Sport-tuned suspension
  - Power tilt-and-telescopic steering column
  - Lexus Memory System power front seats (except lumbar) with three driver and passenger memory settings
  - Electrochromic (auto-dimming) outside mirrors with auto tilt-down in reverse
  - Rain-sensing windshield wipers
  - Aluminum sport pedals
  - Rear spoiler
  - Unique grille
  - One wallet size smart card key

## IS 250 AWD PACKAGES

### LEATHER W/MOONROOF PACKAGE

- Leather-seat surfaces
- Heated driver's and passenger's front seats
- 10-way power adjustable (include lumbar) driver's and front passenger's seats
- Power tilt-and-slide moonroof

### LEATHER W/MOONROOF AND NAVIGATION PACKAGE

- Includes Leather w/Moonroof Package plus:
- Voice-activated HDD Navigation System<sup>1</sup> with backup camera<sup>9</sup>

### LUXURY W/NAVIGATION PACKAGE

- Includes Leather w/Moonroof and Navigation Package plus:
- Premium leather seat surfaces
  - Woodgrain trim
  - Heated and ventilated front seats
  - Front illuminated "Lexus" scuff plates
  - Power tilt-and-telescopic steering column
  - Lexus Memory System power front seats (except lumbar) with three driver and passenger memory settings
  - Electrochromic side view mirrors
  - Rain-sensing windshield wipers
  - Power rear sunshade
  - Bi-Xenon High-Intensity Discharge (HID) headlamps
  - Adaptive Front Lighting System (AFS)
  - Headlamp washers
  - One wallet size smart card key
  - Reverse auto-tilting exterior mirrors

## IS 350 PACKAGES

### F SPORT PACKAGE

- Tilt-and-telescopic steering column
- Lexus Memory System power front seats (except lumbar) with three driver and passenger memory settings
- Premium leather seat surfaces
- Black coloured IS F sport seats
- Heated and ventilated front seats
- Aluminum sport pedals
- Rain-sensing intermittent windshield wipers with mist cycle
- Electrochromic (auto-dimming) outside mirrors with auto tilt-down in reverse
- Bi-Xenon High-Intensity Discharge (HID) headlamps
- Adaptive Front Lighting System (AFS)
- 3-spoke IS F steering wheel
- Sport-tuned suspension
- Headlamp washers
- Chrome scuff plates
- Power tilt-and-slide moonroof
- Rear spoiler
- Unique grille
- 18-inch split-5-spoke aluminum alloy wheels with P225/40R18 front and P255/40R18 rear all-season tires

### LUXURY W/NAVIGATION PACKAGE

- Includes F Sport Package plus:
- Mark Levinson<sup>®</sup> 14-speaker, 300-watt @ less than 0.1% THD, 20-20,000 Hz<sup>12</sup>
  - Premium Surround Sound Audio System<sup>2</sup> with 7.1 architecture and in-dash, single-feed, six-disc DVD/CD auto-changer
  - Voice-activated HDD Navigation System<sup>1</sup> with backup camera<sup>9</sup>
  - Front illuminated "Lexus" scuff plates
  - Woodgrain trim
  - Power rear window sunshade
  - Power tilt-and-telescopic steering column
  - (deleted sport-tuned suspension, 3-spoke IS F steering wheel, black coloured IS F sport seats, rear spoiler and unique grille)

## IS C PACKAGES

### NAVIGATION PACKAGE IS 250 C

- Voice-activated HDD Navigation System<sup>1</sup> with backup camera<sup>9</sup>

### NAVIGATION PACKAGE W/MARK LEVINSON<sup>®</sup> PREMIUM AUDIO SYSTEM IS 350 C

- Voice-activated HDD Navigation System<sup>1</sup> with backup camera<sup>9</sup>
- Mark Levinson<sup>®</sup> 12-speaker, 270-watt @ less than 0.1% THD, 20-20,000 Hz<sup>12</sup>
- Premium Surround Sound Audio System<sup>2</sup> with 7.1 architecture and in-dash, single-feed, six-disc DVD/CD auto-changer

## IS F PACKAGE

### SERIES 2 PACKAGE

- Voice-activated HDD Navigation System<sup>1</sup> with backup camera<sup>9</sup>
- Mark Levinson<sup>®</sup> 14-speaker, 300-watt @ less than 0.1% THD, 20-20,000 Hz<sup>12</sup>
- Premium Surround Sound Audio System<sup>2</sup> with 7.1 architecture and in-dash, single-feed, six-disc DVD/CD auto-changer
- Clearance and backup sensors



## ACCESSORIES



Rear spoiler



All-weather floor mats

- All-weather floor mats
- Block heater
- Car cover
- Cargo liner
- Cargo net
- Rear spoiler
- Side window visors
- Smart card key
- Wheel locks
- 18-inch G-Spyder alloy wheels
- 18-inch ISP alloy wheels

## THE BEST WAY TO FINANCE YOUR NEW IS – EASILY, QUICKLY, AFFORDABLY.

**LEXUS Financial Services** • Lexus Financial Services does nothing but finance or lease Lexus vehicles; thus, we know financing and we know Lexus. • Our interest rates are fully competitive and our terms flexible (up to 72 months). • Since we offer Web services, you can: A: check out our rate; B: save time by getting credit approved on-line – before checking out the vehicle(s) of your interest. • Finally, one-stop shopping (at all Lexus Dealerships) saves you time. We invite you to visit us at [lexus.ca](http://lexus.ca) or call us at 1-800-26-LEXUS.

LEXUS CANADA. Every effort has been made to ensure the specifications and equipment shown are accurate based on information available at time of printing. In some cases, certain changes in standard equipment, options or product delays may occur, which would not be reflected in this brochure. Lexus Canada reserves the right to make these changes without notice or obligation. Your Lexus Dealer is the best source for up-to-date information.

**CLUB LEXUS** Lexus invites you to join us in Club Lexus, a very exceptional compilation of services, offers, special events and pertinent information available only to Lexus owners. To register for Club Lexus, please visit [lexus.ca](http://lexus.ca) or call 1-800-26-LEXUS.

Lexus is always looking for new ways to be respectful of the environment. As part of this effort, this paper contains post-consumer recycled material and has earned the Mixed Sources label as designated by the Forest Stewardship Council.



**1.** The Navigation System is designed to assist in locating an address or point of interest. XM NavTraffic® requires a monthly service fee and is designed to provide real-time traffic or alternative routes of travel. Discrepancies may be encountered between the system and your actual location. Road system changes may affect the accuracy of the information provided. Rely on your common sense to decide whether to follow a specified route. Detailed coverage not available for every city or roadway. Periodic updates available at an additional cost. See your Navigation System *Owner's Manual* for further details. NavTraffic will only be available in Montreal, Vancouver and Toronto. Both Montreal and Vancouver will only have incident data and Toronto will have both incident and flow data. **2.** Mark Levinson is a registered trademark of Madrigal Audio Labs, Inc. a division of Harman International. **3.** Ratings achieved using the required premium unleaded gasoline with an octane rating of 91 or higher. **4.** Performance figures are for comparison only and were obtained with prototype vehicles by professional drivers using special safety equipment and procedures. **5.** FUEL CONSUMPTION RATING. These estimates are based on the Government of Canada's approved criteria and testing methods. The actual fuel consumption of the vehicle may vary. Refer to the Government of Canada publication *EnerGuide Fuel Consumption Guide*. **6.** Brake Assist is designed to help the driver take full advantage of the benefits of ABS. It is not a substitute for safe driving practices. Braking effectiveness also depends on proper brake-system maintenance and tire and road conditions. **7.** Vehicle Stability Control (VSC) and if applicable Vehicle Dynamics Integrated Management (VDIM) are electronic systems designed to help the driver maintain vehicle control under adverse conditions. They are not substitutes for safe driving practices. Factors including speed, road conditions and driver steering input can all affect whether VSC and VDIM will be effective in preventing a loss of control. Please see your *Owner's Manual* for further details. **8.** iPod is a registered trademark of Apple Inc. **9.** The backup camera, available only with the Navigation System, does not provide a comprehensive view of the rear area of the vehicle. You should also look around outside your vehicle and use your mirrors to confirm rearward clearance. **10.** Functioning Satellite Radio requires a compatible receiver and monthly service fee. Please see your Lexus dealer for further details. Reception of satellite signal may vary depending on location. **11.** Lexus tests certain Bluetooth® capable phones for compatibility with Lexus vehicles. Please see your Lexus Dealer for details. Note that the recommendation of Lexus is not a warranty of the performance for any phone and that some problems may occur with any type of handset based on the phone software version or the service coverage available in your area. **12.** Continuous average power, all channels driven, at less than 0.1% THD; 20-20,000 Hz. **13.** The Lexus Tire Pressure Monitor alerts the driver when tire pressure is critically low. For optimal tire wear and performance, tire pressure should be checked regularly with a gauge; do not rely solely on the monitor system. Please see your *Owner's Manual* for details. **14.** All the airbag ("AB") systems are Supplemental Restraint Systems. All ABs (if installed) are designed to inflate only under certain conditions and in certain types of severe collisions: frontal and knee ABs typically inflate in frontal collisions; side and side curtain ABs in side collisions; Roll-Sensing Curtain ABs at a severe tilt degree, roll or lateral G-force. In all other accidents, the ABs will not inflate. To decrease the risk of injury from an inflating AB, always wear seatbelts. Do not use a rearward-facing child seat in any front passenger seat. Please see your *Owner's Manual* for further information/warnings. **15.** The SmartAccess system may interfere with some pacemakers or cardiac defibrillators. If you have one of these medical devices, please talk to your doctor to see if you should deactivate this system. **16.** HomeLink is a registered trademark of Johnson Controls. **17.** Class based on Luxury Coupe, Hardtop Convertible segmentation, retractable hardtop competitors.

Vehicles in this brochure shown with optional equipment. Some features mentioned and/or shown in this brochure may only be available as part of an optional package.

Under very cold conditions, the operation of some vehicle electronic systems using liquid crystal technology (such as CD, DVD, NAV and Audio displays) may be adversely affected until a warmer interior vehicle temperature is reached.

Lexus reminds you to place small children in CSA-approved car seats - in the rear seats, to always wear your seat belts, and to drive safely.

