



HYUNDAI

NEW THINKING.
NEW POSSIBILITIES.™

2014 7-PASSENGER

SANTAFÉ XL



CHALLENGE EVERYTHING.

CHALLENGE. IT'S IN OUR DNA, AND IT'S EXACTLY WHY HYUNDAI HAS BECOME A LEADER IN THE AUTOMOTIVE INDUSTRY. WE BELIEVE THAT BEING A LEADER MEANS VENTURING AWAY FROM THE MAINSTREAM AND CHALLENGING CONVENTION. THIS ATTITUDE IS THE DRIVING FORCE THAT HAS LED US TO MANUFACTURE OUR OWN STEEL, DESIGN VEHICLES WITH FLUIDIC SCULPTURE, AND MOVE MORE FEATURES FROM THE OPTIONAL LIST TO THE STANDARD LIST ON ALL OUR VEHICLES. WE CHALLENGE OURSELVES. WE CHALLENGE PHYSICS. WE CHALLENGE THE STATUS QUO. AT HYUNDAI, WE CHALLENGE EVERYTHING, AND IT'S THIS THINKING, A **NEW KIND OF THINKING** THAT LEADS TO **NEW POSSIBILITIES** FOR YOU.

Visit hyundaicanada.com



ROOM FOR 7

The Santa Fe XL is for the family who wants to ride in comfort. Whether that entails ample storage capacity for your adventures, seating space for seven passengers, or premium comfort and convenience amenities – the 2014 Santa Fe XL is a true standout when you want space and style.

STANDOUT DESIGN

There's no question the Santa Fe XL is an impressively large family mover, but space and storage capacity are not the only features that stay top of mind. Embraced by the Hyundai fluidic design principles, the ferocity and strength of nature is the inspiration behind the dynamic body lines and bold shape of the Santa Fe XL. Featuring sculpted headlights with LED accents, sporty dual chrome exhaust tips and available 19" alloy wheels – you get big, beautiful and powerful.





**AVAILABLE HID HEADLIGHTS
WITH STANDARD LED ACCENT**



**AVAILABLE LED TURN
SIGNAL INDICATORS**



AVAILABLE 19" ALLOY WHEELS





**AVAILABLE PANORAMIC SUNROOF
AND 6-PASSENGER SEATING**



**HEATED FRONT SEATS AND
AVAILABLE HEATED REAR SEATS**



**AVAILABLE INFINITY® AUDIO
SYSTEM WITH 10 SPEAKERS**

EXTRA LARGE SPACE

When it comes to space and versatility, this 7-seater aims to please (6-seat configuration available on Luxury and Limited models). The intelligent design allows you to transform the Santa Fe XL from the ultimate comfort zone to the ultimate cargo hauler. Reclining second row seats spilt-fold 40/20/40, feature button release from the cargo area and slide forward for flexible storage options, while third row seats spilt-fold 50/50 to further enhance cargo utility. All this sounds even better with the available power lift tailgate that makes it that much more convenient to load and unload cargo. And while the Santa Fe XL adapts to your lifestyle needs, it also enhances your travels with features like standard Bluetooth®, heated front seats, YES Essentials® stain protection for cloth seating, and available memory driver's seating – just one more control at your fingertips.



POWER AND CONTROL

The mover in family mover gets its strength from a truly powerful engine. It's a strapping 3.3L GDI V6 engine, delivering 290 horsepower and 252 lb-ft of torque with a confident 5,000 lbs. towing capacity. The best part about the performance is just how efficient the power is. Mated to a 6-speed automatic transmission with SHIFTRONIC® manual shift mode, with the press of a button you can switch the Santa Fe XL into Active ECO mode to modify engine and transmission control to help improve fuel efficiency.



SAFETY DRIVEN

The Santa Fe XL is primed to take on the everyday and even the odd day out. New for 2014 is an available Blind Spot Detection System, featuring audible and visual warning cues in the event another vehicle is detected in defined blind spot areas during a lane change. Equipped with standard Hillstart Assist Control (HAC) and Downhill Brake Control (DBC), steep inclines and declines are no match. HAC detects inclines and engages the Santa Fe XL to prevent rollback, while DBC helps maintain a consistent speed while traveling downhill. The list of standard safety features continues including Electronic Stability Control with Traction Control System², 7-airbags¹ and an Anti-lock Braking System with Electronic Brake-force distribution and Brake Assist.



SANTA FE XL FEATURES



HEATED AND VENTILATED SEATS.

For hot days and cold nights, keep your family feeling just right with standard front heated seats and available ventilated seats. Your rear seat passengers will thank you for the luxury of the available heated second row seats.



PANORAMIC SUNROOF.

As big as the Santa Fe XL is, the available panoramic sunroof extends to cover it all. The glass panel spans from front to rear passengers – giving you more sun, fresh air, and a better view of what's above.



LED TAILLIGHTS.

Give drivers who trail behind the pleasure of viewing the available, unique LED taillights that not only look great, but also dramatically increase visibility both day and night (available on Limited models).



NAVIGATION SYSTEM WITH BACK-UP CAMERA.

To help you spot hard to see items behind you, the Santa Fe XL Luxury model is equipped with a 4.3" colour touch-screen display, to help make backing up easier. Step up to the Limited model for an enormous 8" touch-screen (image shown) with back-up camera and navigation system as well, to help you get from point A to B with ease.



ALL-WHEEL DRIVE (AWD).

The 2014 Santa Fe XL has been engineered with an available, advanced all-wheel drive system which features Active Cornering Control. Managing vehicle acceleration by adjusting the inside rear wheel speed during a turn, Active Cornering Control helps improve vehicle stability and helps to reduce over/under steer in adverse driving conditions.



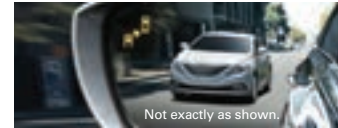
STANDARD BLUETOOTH®.

Keep your eyes forward and hands on the wheel with a Bluetooth® Hands Free mobile phone interface. As an added convenience, cruise control to regulate your speed and audio volume controls are also conveniently mounted on the steering wheel, a standard feature on all models.



MEMORY DRIVER'S SEAT.

The Santa Fe XL comes equipped with an available integrated memory driver's seat, allowing you to switch from two profiles that affect not just the driver seat, but also the corresponding exterior mirror positions. The seat itself is powered to adjust in 12 different ways to make sure the positioning feels perfectly comfortable.



BLIND SPOT DETECTION SYSTEM.

A new feature for 2014, the Santa Fe XL helps reduce stress and improve safety when changing lanes with an available Blind Spot Detection System. Radar sensors in the rear bumper help to monitor blind spots on the road and alert the driver in the side mirror with an LED indicator light when a vehicle enters defined blind spot areas near the rear of the car.



HID HEADLIGHTS WITH LED ACCENTS.

The available Xenon HID headlights illuminate the road with bright electric arcs of light. The standard LED headlight accent adds a touch of sophistication and is one more small detail in a long list of features that shows the Santa Fe XL's attention to style.



THERE'S NO SUBSTITUTE FOR PEACE OF MIND.

The quality of our vehicles is equally matched by the quality of our warranty. Rest assured, we stand proudly and confidently behind our vehicles to give you the ultimate peace of mind with a 5 year/100,000km comprehensive limited warranty, one of the best backed warranties in Canada. We also provide a 3 year/Unlimited km Roadside Assistance Program^{††} featuring flat tire changing, lockout service and more. Just one toll-free call away, 24 hours a day. You're covered with Hyundai.

**5 YEAR
WARRANTY**

100,000 KM
COMPREHENSIVE LIMITED WARRANTY

5-YEAR/100,000 KM
Comprehensive Limited Warranty[†]

5-YEAR/100,000 KM
Powertrain Warranty

5-YEAR/100,000 KM
Emission Warranty

3-YEAR/UNLIMITED KM
Roadside Assistance Program^{††}

SANTA FE XL COLOURS

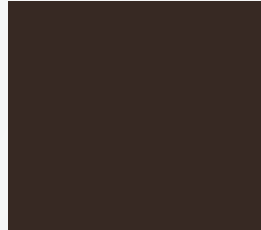
EXTERIOR



CIRCUIT SILVER ABCD



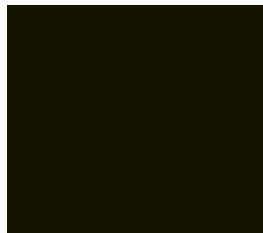
IRON FROST ABCD



FROSTED MOCHA ABC



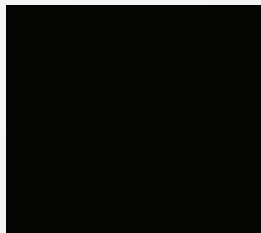
REGAL RED PEARL ABC



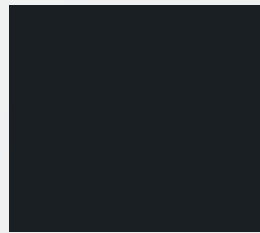
HUNTER GREEN ABC



MONACO WHITE ABC



BECKETTS BLACK ABCD

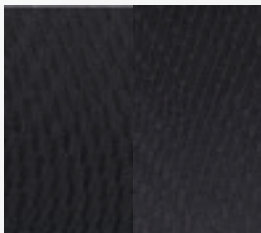


NIGHT SKY PEARL ABC

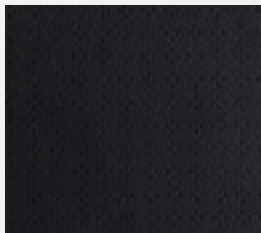
INTERIOR



GREY CLOTH* A
With YES Essentials® stain protectant
Standard on 3.3L model



BLACK CLOTH B
With YES Essentials® stain protectant
Standard on 3.3L Premium model



BLACK LEATHER C
Standard on 3.3L Luxury and 3.3L Limited
models



SADDLE LEATHER D
Available on 3.3L Limited model

Lettering denotes available exterior and interior colour combinations.

Choice of interior colour depends upon model and/or exterior colour selection. Due to digital production process, the colours shown throughout this brochure may vary slightly from the actual hue. See your dealer for model applications and to view the Hyundai Colour Selector. Visit hyundaicanada.com or see your dealer for details. *Not exactly as shown.

RIMS



**3.3L, 3.3L Premium and
3.3L Luxury 18" Wheel**



3.3L Limited 19" Wheel

SANTA FE XL ACCESSORIES

CROSS RAILS.

This durable, quick-locking cross rail system lets you transport cargo easily, without sacrificing interior room. Remove when not in use.



RUBBER FLOOR MATS.

Protect the interior of your Hyundai from everyday dirt and debris with custom-made floor mats. Remove carpet mats prior to installation.



REAR BUMPER PROTECTOR.

Help protect the finish on your bumper from chips and scratches, when loading and unloading the cargo area, with this durable, custom-fit rear bumper protector.



PLASTIC HOOD PROTECTOR.

Prevent dents and scratches caused by road and vehicle debris with an attractive plastic hood protector.



CARGO COVER.

Keep your valuables safe and out of sight with an easily removable cargo cover.



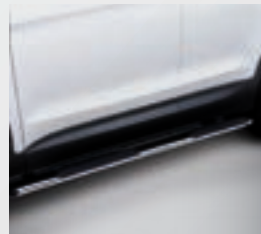
HITCH MOUNT BIKE CARRIER (2 BIKES).

New hold fast cradles cushion bike and provide maximum bike security. Anti-sway cages prevent bike-to-bike and bike-to-vehicle contact. New and improved hitch swing folds arms down when not in use and tilts carrier away from vehicle for trunk, hatch or tailgate access. Increased mast height for improved ground clearance.



PREMIUM ALL WEATHER CARGO TRAY.

Protect your interior cargo area with style. This durable, custom-fit premium cargo tray helps protect from spills and messy loads while helping keep your cargo area looking new for years to come.



SIDE STEPS (OVAL TUBES).

These oval side steps were designed to complement the design nature of the Santa Fe XL. They are as attractive as they are functional. Finished in stainless steel and includes step pads for secure footing, these oval side steps will look good for years to come.



TRAILER HITCH KIT.

Designed to meet all your towing needs, a Hyundai hitch can accommodate a wide variety of hitch-mounted accessories. Kit includes: trailer hitch, ball mount and end cap. Chrome ball shown not included.



PREMIUM ALL WEATHER FLOOR LINERS.

Premium all weather floor liners were designed to cover the interior carpet providing maximum protection against the elements that other mats cannot offer. Their unique and durable design features a non-slip surface for added comfort and a long lasting premium look. Remove carpet mats prior to installation.

SANTA FE XL SPECIFICATIONS

3.3L (FWD)

Standard Equipment Includes:

3.3L, 290 hp, V6 GDI Engine with DOHC and D-CVVT • 18" Aluminum Alloy Wheels • 6-speed Automatic Transmission with SHIFTRONIC® • 4-wheel Disc Brakes • Active Eco System • Air Conditioning with Manual Temperature Control and 2nd Row Vents • AM/FM/SiriusXM™/CD/MP3 Audio System with LCD Screen and 6 Speakers • iPod®/USB/Auxiliary Input Jacks • Anti-lock Braking System (ABS) with Electronic Brake-force Distribution (EBD) and Brake Assist (BA) • Electronic Stability Control (ESC) with Traction Control System (TCS)² • Downhill Brake Control (DBC) and Hillstart Assist Control (HAC) • Front Windshield Wiper De-icer • Bluetooth® Hands Free Phone System • Front Centre Console with Fixed Armrest, Storage Box and Dual Cupholders • Sliding 2nd Row Seats • Driver and Front Passenger Illuminated Vanity Mirrors • Airbags¹ (7): Dual Front, Front Seat-mounted Side-impact, Roof-mounted Side-curtain with Roll-over Sensor and Driver Knee Airbag • Heated Front Seats • Deluxe Cloth Seats with YES Essentials® Stain Protection • 7-passenger Seating • 2nd Row 40/20/40 Split Fold-flat and Recline with Height Adjustable Head Restraints • 3rd Row 50/50 Split Bench with Fold Forward Head Restraints • Power Adjustable, Heated Exterior Mirrors • Power Windows with Driver's Auto-up/Down and Pinch Protection • Roof-rack Side Rails • Remote Keyless Entry with Alarm • Steering Wheel-mounted Audio and Cruise Controls • LED Positioning Lamps • Fog Lights • Chrome Exterior Door Handles • Rear Spoiler • 2,268 kg (5,000 lbs.) Towing Capacity • Trailer Tow Pre-wiring • Dual Chrome Exhaust Tips • Solar Glass with Rear Privacy Glass • Driver Seat 2-way Power Lumbar Support

3.3L PREMIUM (AWD)

Includes 3.3L Standard Equipment Plus:

All-Wheel Drive • Automatic Headlights • Dual-zone Automatic Temperature Control with Clean Air Ionizer • 12-way Power Adjustable Driver's Seat including 4-Way Power Lumbar Support • Leather-wrapped Heated Steering Wheel • Heated 2nd Row Seats • Leather-wrapped Gear Shift Knob • Power Tailgate • Rear Side Window Sunshade Blinds • Rear Parking Assist • 3rd Row Air Conditioning Controls with Vent • 115V Cargo Area Power Outlet

3.3L LUXURY (AWD)

Includes 3.3L Premium Standard Equipment Plus:

4-way Power Adjustable Front Passenger's Seat • AM/FM/CD/SiriusXM™/MP3 Audio System with 4.3" Colour Touch-screen Audio Display • Blind Spot Detection • Back-up Camera • Electrochromic Auto-dimming Rearview Mirror with HomeLink® and Compass • Leather Seating Surfaces • Mirror-mounted Turn Signal Indicators • Panoramic Sunroof • Memory Driver's Seat and Driver's Side Mirror

Optional: Available 2nd Row Captain's Chairs (6-passenger seating)

3.3L LIMITED (AWD)

Includes 3.3L Luxury Standard Equipment Plus:

19" Aluminum Alloy Wheels • Xenon HID Headlights with Auto-leveling Function • LED Tail Lamps • Infinity® AM/FM/CD/SiriusXM™/MP3 Audio System with 10 Speakers • Navigation System with High Resolution 8" Touch-screen Display and Back-up Camera • Proximity Key with Push-button Start • Deluxe Metal Door Scuffs • Supervision Cluster with TFT LCD Screen • Ventilated Front Seats

Optional: Available 2nd Row Captain's Chairs (6-passenger seating)

S = Standard
O = Optional
- = Not Available

PERFORMANCE

			3.3L FWD	3.3L Premium AWD	3.3L Luxury AWD	3.3L Limited AWD
Engine	3.3L GDI 6-cylinder Engine		S	S	S	S
	Displacement	(3,342cc)	S	S	S	S
	Bore & Stroke (mm)	92.0 X 83.8	S	S	S	S
	Compression Ratio	11.5	S	S	S	S
	Horsepower @ RPM (regular fuel)	290 @ 6,400	S	S	S	S
	Torque (lb-ft) @ RPM (regular fuel)	252 @ 5,200	S	S	S	S
	Valve Train	DOHC	S	S	S	S
	Variable Induction System (VIS)		S	S	S	S
	Fuel Delivery System	Gasoline Direct Injection (GDI)	S	S	S	S
	Block/Head Composition	Aluminum	S	S	S	S
	Exhaust	Dual	S	S	S	S
	Ignition System Type	Electronic / Distributorless	S	S	S	S
	Battery	80AH	S	S	S	S
Drive Configuration	FWD		S	-	-	-
	AWD		-	S	S	S
Transmission Type	6-speed Automatic Transmission with SHIFTRONIC®		S	S	S	S
	Transmission Oil Cooler		S	S	S	S
Brakes	Front: Single Piston, Ventilated Disc (320mm)		S	S	S	S
	Rear: Single Piston, Solid Disc (302mm)		S	S	S	S
	Downhill Brake Control (DBC)		S	S	S	S
	Hillstart Assist Control (HAC)		S	S	S	S
Miscellaneous Features	Active ECO Indicator Switch		S	S	S	S
	Chassis	Unibody	S	S	S	S
	Trailer Tow Pre-wiring		S	S	S	S
	Coefficient of Drag	0.34	S	S	S	S
Steering	Motor Driven Power Steering (MDPS)		S	S	S	S
	Overall Ratio	15.03	S	S	S	S
	Turning Diameter (curb-to-curb, in m)	11.24	S	S	S	S
	Turns (lock to lock)	2.95	S	S	S	S
Suspension	Front: MacPherson Strut, Twin-tube Gas Filled Dampers with Stabilizer Bar (26mm)		S	S	S	S
	Rear: Multi Link, Gas Shock Absorber with Stabilizer Bar (FWD/AWD) (21/19mm)		S	S	S	S
Tires	P235/60R18 Tires		S	S	S	-
	P235/55R19 Tires		-	-	-	S
Wheels	18" Alloy Wheels		S	S	S	-
	19" Alloy Wheels		-	-	-	S

For more detailed specifications and information please visit www.hyundaicanada.com, or visit your dealer today.

EXTERIOR		3.3L FWD	3.3L Premium AWD	3.3L Luxury AWD	3.3L Limited AWD
Glass	Front Solar Control Glass and Rear Privacy Glass	S	S	S	S
Lighting	Automatic Headlights	-	S	S	S
	Projector Beam Headlights with LED Accents	S	S	S	S
	Fog Lights	S	S	S	S
	HID Headlights with Auto-leveling Function and LED Taillights	-	-	-	S
Miscellaneous Features	Power Liftgate	-	S	S	S
	Windshield Wiper De-icer	S	S	S	S
	Rear Windshield Wiper, 2-speed Intermittent with Washer	S	S	S	S
	Rear Spoiler	S	S	S	S
	Roof Rack Side Rails	S	S	S	S
Outside Mirrors	Body Color, Heated Exterior Power Mirrors	S	S	S	S
	Mirror-mounted Turn Signal Indicators	-	-	S	S
Sunroof	Panoramic Sunroof	-	-	S	S

INTERIOR

Air Conditioning	Air Conditioning	S	S	S	S
	Dual-zone Automatic Temperature Control with Clean Air Ionizer	-	S	S	S
	3rd Row HVAC Controls and Vents	-	S	S	S
Audio	AM/FM/SiriusXM™/CD/MP3 6 Speaker Audio System	S	S	-	-
	AM/FM/SiriusXM™/CD/MP3 6 Speaker Audio System with 4.3" Colour Touchscreen	-	-	S	-
	Infinity® AM/FM/SiriusXM™/CD/MP3 Premium 10-speaker Audio System with 12-channel External Amplifier	-	-	-	S
	iPod®/USB/Auxiliary Input Jacks	S	S	S	S
Front Seats	8-way Adjustable Driver's Seat with 2-Way Power Lumbar Support	S	-	-	-
	12-way Adjustable Power Driver's Seat with 4-Way Lumbar Support	-	S	S	S
	Integrated Memory Driver's Seat and Driver's Side Mirror	-	-	S	S
	4-Way Power Passenger Seat	-	-	S	S
	Heated Front Seats	S	S	S	S
	Ventilated Front Seats	-	-	-	S
Miscellaneous Features	6-passenger Seating (2nd row individual Captain's Chairs)	-	-	0	0
	115 Volt Power Outlet (in cargo area)	-	S	S	S
	Bluetooth® Hands Free Phone System	S	S	S	S
	Deluxe Metal Accent Door Scuff	-	-	-	S
	Proximity Key with Push Button Start	-	-	-	S
	Rear Side-window Manual Sunshades	-	S	S	S
	Supervision Instrument Cluster with 4.2" TFT LCD Screen	-	-	-	S
	Keyless Entry and Alarm System	S	S	S	S
Mirrors	Sunvisors with Illuminated Vanity Mirrors & Driver Extension	S	S	S	S
	Electrochromic Auto-dimming Rearview Mirror with HomeLink® and Compass	-	-	S	S
Navigation System	8" High-resolution Touch-screen Display with Back-up Camera	-	-	-	S
Power Windows	Driver's Auto-up/Down with Pinch Protection	S	S	S	S
Rear Seats	2nd Row Sliding Seat with Cargo Area Release	S	S	S	S
	2nd Row Captain's Chairs	-	-	0	0
	2nd Row Heated Rear Seats (outer positions only)	-	S	S	S
	2nd Row Split Folding (40/20/40) and Recline	S	S	S	S
	3rd Row Split Folding 50/50	S	S	S	S
Seat Trim	Deluxe Cloth with YES Essentials® Stain Protection	S	S	-	-
	Leather Seating Surfaces	-	-	S	S
Steering Wheel	Leather-wrapped and Heated Steering Wheel	-	S	S	S
	Steering Wheel Mounted Audio and Cruise Controls	S	S	S	S
	Tilt & Telescopic Steering Wheel	S	S	S	S

SAFETY

		3.3L FWD	3.3L Premium AWD	3.3L Luxury AWD	3.3L Limited AWD
Airbags ¹	Advanced Driver and Front Passenger (2)	S	S	S	S
	Occupancy Classification System (OCS)	S	S	S	S
	Driver and Front Passenger Seat-mounted Side-impact (2)	S	S	S	S
	Side-curtain Roll-over Sensing Roof-mounted Driver Knee	S	S	S	S
Blind Spot Detection System	-	-	S	S	
Brakes	Anti-lock Braking System with Electronic Brake-force Distribution (EBD) and Brake Assist (BA)	S	S	S	S
Child Safety	Child-proof Rear Door Locks	S	S	S	S
	LATCH Lower Anchors and Upper Tether Anchors	S	S	S	S
Miscellaneous Features	Vehicle Stability Management (VSM)	S	S	S	S
	Electronic Stability Control (ESC) with Traction Control System (TCS) ²	S	S	S	S
Restraint Systems	Front: 3-Point Outboard Seatbelt with Adjustable Shoulder Height	S	S	S	S
	Rear: 3-Point Inboard Seatbelt	S	S	S	S
	Front Seatbelt Pre-tensioners and Force Limiters	S	S	S	S
	Front Adjustable Head Restraints	S	S	S	S
	Rear Head Restraints	S	S	S	S

DIMENSIONS

Exterior Dimensions (mm)	Wheelbase	2,800	S	S	S	S
	Overall Length	4,905	S	S	S	S
	Overall Height (with roof rails)	1,700	S	S	S	S
	Width (excluding mirrors)	1,885	S	S	S	S
	Minimum Ground Clearance	185	S	S	S	S
Interior Dimensions (mm) 1st/2nd/3rd Row	Head Room	1,006/1,002/908	S	S	-	-
	Head Room with Panoramic Sunroof	971/974/908	-	-	S	S
	Leg Room	1,120/1,050/800	S	S	S	S
	Shoulder Room	1,508/1,488/1,369	S	S	S	S
	Hip Room	1,439/1,406/1,120	S	S	S	S
Track (mm)	Front	1,628	S	S	S	S
	Rear	1,639	S	S	S	S
Volume (L)	Total Interior	4,531	S	S	S	S
	Cargo (behind front seats)	2,265	S	S	S	S
	Cargo (behind 2nd row seats)	1,159	S	S	S	S
	Cargo (behind 3rd row seats)	383	S	S	S	S
Curb Weight (kg)	3.3L FWD	1,790	S	-	-	-
	3.3L AWD	1,968	-	S	S	S
GVWR (kg)	FWD	2,500	S	-	-	-
	AWD	2,550	-	S	S	S
Maximum Towing Capacity (kg)	with Trailer Brake	2,268	S	S	S	S
	without Trailer Brake	750	S	S	S	S

FUEL ECONOMY^A (LITRES/100KM)

3.3L FWD City/Highway/Combined	11.5 / 7.7 / 9.8
3.3L AWD City/Highway/Combined	11.8 / 8.0 / 10.1
Fuel Tank (L)	71



hyundaicanada.com/santa-fe-xl

TMThe Hyundai name, logos, product names, feature names, images and slogans are trademarks owned by Hyundai Auto Canada Corp. Specifications, features, illustrations, accessories, materials and equipment and all other information shown in this brochure are based on the latest information available at the time of publication. Although descriptions are believed to be correct, accuracy cannot be guaranteed. Hyundai Auto Canada Corp. reserves the right to make any changes or modifications at any time, without notice or obligation, including, without limitation, in colour, specifications, features, accessories, materials, equipment and models. Some vehicles are shown with optional equipment. All Hyundai warranties have no deductible. ¹Hyundai's Comprehensive Limited Warranty coverage covers most vehicle components against defects in workmanship under normal use and maintenance conditions. ²Hyundai's 24-Hour Roadside Assistance Program is a limited service and does not cover certain costs or expenses. Roadside Assistance is not a warranty. ³Fuel economy figures are based on manufacturer's testing and are used for comparison purposes only. Actual fuel efficiency may vary based on driving conditions and the addition of certain vehicle accessories. ⁴The Supplemental Restraint (Airbag) System (SRS) is designed to work with the 3-point seatbelt system. The SRS deploys in certain frontal and/or side-impact conditions where significant injury is likely. The SRS is not a substitute for seatbelts, which must still be worn at all times. Children under the age of 13 should be securely restrained in the rear seat. NEVER place a child-seat in the front seat of a Hyundai vehicle. ⁵Electronic Stability Control (ESC) and Traction Control System (TCS) are meant to enhance conscientious driving habits and are not a substitute for safe driving practices. ESC cannot control your vehicle's stability under all driving situations. No system, no matter how advanced, can overcome physics or correct poor driving. Speed, road conditions and driver steering input will affect whether ESC can help prevent loss of control. See Owner's Manual for details. The SiriusXMTM name is a trademark of SiriusXM Satellite radio Inc. iPod[®] is a registered trademark of Apple Inc., HomeLink[®] is a registered trademark of Johnson Controls Inc., YES Essentials[®] is a registered trademark of SAGE Automotive Interiors Inc. Infinity[®] is a registered trademark of Harman International Inc., and any use of such marks by Hyundai is under license. All other trademarks and trade names are those of their respective owners.



www.facebook.com/hyundaicanada
www.youtube.com/hyundaicanada