

*2015 MAZDA CX-9*



**mazda**



# Terminal 3

## DEFYING CONVENTION SEVEN SEATS AT A TIME.

The 2015 CX-9 dares to achieve what no other crossover can. For starters, it's a 7-seater raised by a pack of sports cars. Built with extraordinarily nimble road manners, a sumptuous interior and superb good looks, the CX-9 is a pure expression of balance and harmony. And with KODO "Soul of Motion" design, it delivers a stunning visual presence – inside and out – characterized by sporty yet graceful proportions that are strikingly luxurious. Both flexible and focused, with an uncompromising array of advanced technologies and features, navigating everything from rush hour traffic to twisty back country roads has never been so exhilarating.



魂動

KODO : SOUL of MOTION





## A SOLID RIDE FOR ADVENTUROUS SPIRITS.

The intelligently versatile CX-9 is engineered for adventure. With its powerful 273-hp, 3.7 L V6 engine, Variable Valve Timing (VVT) and an impressive 270 lb. ft. of torque, no matter where adventure takes you and your family, the CX-9 delivers a stable, solid ride that is exceptionally agile. The available Active Torque-Split All-Wheel-Drive system\* allows for a confident stance on a variety of roads in a variety of weather conditions. And with the standard towing package, you can haul up to 1568 kg (3,500 lbs.) of gear, helping you take adventure to the road. Wherever those roads lead, the CX-9 puts your passion for driving first, giving a ride that belongs in a confidence-inspiring category of its own.

\*Optional on the ES model and standard on the EL model.

†Estimated fuel economy based on Government of Canada's 55-cycle testing method for the CX-9 ES 2010. Your actual fuel consumption may vary depending on how, where and when you drive.



### / ACTIVE TORQUE-SPLIT ALL-WHEEL-DRIVE /

The available Active Torque-Split All-Wheel-Drive system\* maintains an ideal balance between front and rear axle torque (up to 50/50) by continuously monitoring wheel speed and engine data, and instantly adjusting to adverse changes in road and weather conditions.



### / MANUAL SHIFT MODE /

A 6-speed Sport mode automatic transmission, standard on all CX-9 models, combines the extra control - and fun - of a manual shift mode with the smooth-shifting convenience of an advanced automatic transmission.



### / VARIABLE VALVE TIMING /

Normally, "accelerator" and "fuel efficiency" would seem to work against each other. But the CX-9's 3.7 L V6 engine bucks the trend with intelligent Variable Valve Timing that maximizes high-rpm power and low-end torque, yet it delivers up to 30.0 L/100 km (highway).†



#### / ENTRY AND EXIT /

Larger rear doors open up to 72° to create an extra-wide opening for quick and easy entry and exit.

#### / THIRD-ROW ACCESS /

A single hand is all it takes to operate the CX9's ingenious "tilt-and-slide" mechanism on the 60/40-split fold-down second-row seats. The seat automatically moves forward nearly 22 cm for easy access to third-row seating.

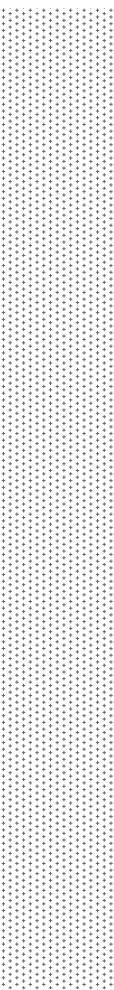
#### / VERSATILE CARGO SPACE /

Besides deftly handling up to seven adults, the CX9 also provides a generous 487 L of cargo space behind the third-row seat. Quickly and conveniently fold down the second- and third-row seats, and cargo room expands to 2,851 L\*.

## BIG ON AMENITIES. EVEN BIGGER ON CONVENIENCE.

In keeping up with life's daily challenges, little things make a difference. For driver and passengers alike, the CX9's smallest details are designed to be a testament to craftsmanship - including the cavernous 2,851 L of cargo space\*. From its available leather- and Lux Suede®-trimmed seats\* standard 8-way power-adjustable driver's seat with available 3-setting memory position†, to its leather-wrapped steering wheel and shift knob, you're surrounded by refinement. With such an intelligently designed interior, sport and splendour merge in absolute harmony.

\*Available on the G5 model with black interior and luxury Package and standard on the G7 model with black interior. Vehicles with sand interior come with leather-trimmed upholstery. †Standard on the G7 model. ‡Please refer to proper use of cargo.







IT'S SO INTUITIVE, IT'S LIKE DRIVING WITH A SIXTH SENSE.

The cockpit of the CX-5 is outfitted for the driver's ultimate convenience and control. Mazda's Human Machine Interface (HMI) has evolved to a level of intuitiveness that allows for (remarkable ease of operation. Instrumentation is readily accessible at a glance. Features such as steering-wheel mounted audio controls and cruise control, Bluetooth® hands-free phone system and 3-zone climate control - all standard - keep you comfortable and connected. The standard audio touchscreen display with "tearless" camera\*, available navigation system and SiriusXM® Satellite Radio\* make taking to the road entertaining and so intuitive that it's like driving with a sixth sense.

Make and take calls via the standard Bluetooth® hands-free phone system. Audio Profile offers wireless audio capability, so you can enjoy your music from your Bluetooth®-compatible audio device.



Our convenient navigation system\* offers advanced features such as voice recognition, advanced lane guidance and route recommendations.



A driver's seat with memory position is standard on the GT model. It allows you to create and store up to three unique driver's seat positions - automatically accessible at the touch of a button.



Now, when a text comes in while you're driving, you can stay focused on the road ahead. Enjoy fully integrated text display and audio read-out, and the ability to reply by choosing from a number of preset, standardized return messages. ▶



The rearview camera\* comes standard on the CX-9. It offers increased visibility of objects behind you, and it's automatically activated whenever the CX-9 is shifted into reverse.



As you approach your CX-9, the Advanced Keyless Entry System (keyless entry and start)\* brings your CX-9 to life. Recognizing you, it remotely unlocks the doors and automatically adjusts the 8-way power driver's seat to your personal settings.



The premium Bose® audio system\*, custom-built for the CX-9, features 10 speakers, Centerpoint® Surround Sound, and stunning multi-channel sound. AudioPilot® automatically adjusts multiple frequencies to compensate for distracting road, wind and cabin noises.



\*Rearview camera does not provide a comprehensive view of the entire rear area of the vehicle. Always check your surroundings.  
†Available on the G5 model with Luxury Package and standard on the G7 model.  
‡Standard on the G7 model.

▲Text messaging and email functions are only compatible with certain devices.

## PLAYING IT SAFE BY ENGINEERING TO THE NEXT LEVEL.

The numerous active and passive safety features in the CX-9 are painstakingly crafted to give you and your family one feeling: peace of mind. Active whiplash-reducing front-seat headrests, three-point seatbelts for all seven positions, side-impact door beams, front and rear crumple zones, integrated child-safety seat anchors and tether's in the second row - and we're only just beginning. A collapsible steering column absorbs energy in the event of a heavy frontal impact, while a foldaway brake assembly reduces the risk of serious injuries to the ankle and leg. Just a few of the anticipatory safety features you'll find on your CX-9.



### / SIX STANDARD AIR BAGS /

Advanced dual front air bags\* that use inflators with both crash-zone and driver/passenger's seat weight sensors are standard on all CX-9 models - as are dual side air bags and dual side-impact air curtains.

### / "TRIPLE H" BODY CONSTRUCTION /

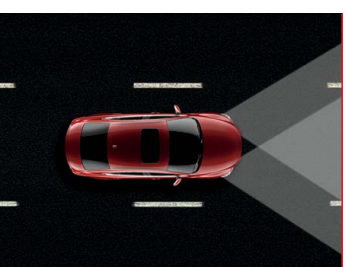
By adding extra steel reinforcements to critical areas of the body, Mazda's "Triple H" body construction system enhances structural integrity, impact protection and rigidity for superior handling. In key areas, the CX-9 also uses high-tensile steel, which is stronger and more rigid than conventional steel.

\*Always wear your seat belt and secure children in the rear seats in appropriate child restraints. Always check your mirrors. Be aware of the traffic around you. AAS based on the GT model.



### / ENHANCED STABILITY & CONTROL /

The Traction Control System detects wheel spin, then reduces engine power to help improve traction in slippery conditions. Dynamic Stability Control\* modulates the engine and brakes when over- or under-steering is detected, helping to keep you on your intended path while cornering. Roll-Over Stability Control uses sensors to monitor vehicle movement and automatically applies brakes to help keep the CX-9 stable.



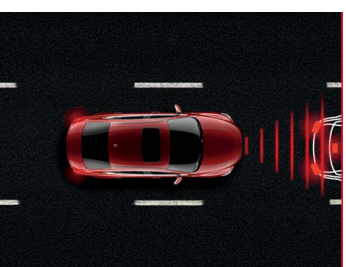
### / CLEARER NIGHTTIME VISION /

Standard on the GT model, the auto on/off Bi-Xenon High-Intensity Discharge headlights automatically provide you with enhanced low beam nighttime illumination. No need to even take your hands off the wheel.



### / BLIND SPOT MONITORING SYSTEM WITH REAR CROSS TRAFFIC ALERT /

The Blind Spot Monitoring System\* uses radar sensors to detect objects in your left or right blind spots, alerting you with a warning light in the appropriate side mirror. If you signal a lane change in your blind spot, the light blinks and a warning chime sounds. The Rear Cross Traffic Alert\* warns you when cars are coming when you are backing out of a parking space.



### / ADVANCED BRAKING TECHNOLOGIES /

A comprehensive set of advanced braking technologies comes standard on the CX-9. Large 4-wheel disc brakes promote linear, fade-resistant stopping power. An Anti-lock Brake System prevents wheel lockup so you can make controlled stops. Electronic Brake Force Distribution applies force to individual brakes based on changing road conditions. And in emergency situations, Brake Assist increases braking pressure.



*“...the CX-9’s popularity is bolstered by its reasonable price, extensive list of comfort and safety features and strong reputation for reliability and resale.”*

- autodata.com



## CX-9 ACCESSORIES. IT'S YOUR MAZDA - MAKE IT YOUR OWN.

Customize your new CX-9 with Genuine Mazda Accessories. When installed by your Mazda Dealer prior to or at initial vehicle retail delivery, Genuine Mazda Accessories carry the same new-vehicle limited warranty as your new Mazda. Ask your dealer for details.



**01 // CARGO COVER /**  
Keep your valuables out of view from prying eyes. Our Cargo Cover\* is easy to install, remove or retract when full cargo access is needed.

### 05 // NAVIGATION /

Get where you need to go with our tri-dash, fully integrated Navigation System. Easily installed by your dealer, it uses the CX-9's large in-dash full-colour touchscreen display to give you voice-guided, turn-by-turn directions, real-time traffic updates, intuitive voice recognition and much more.

### 06 // TRAILER HITCH /

With a towing capacity up to 3,500 lb., it's easy to come out and play. Bring your toys to your favourite destination with this Class I rated receiver designed especially for your Mazda CX-9. Four-pin trailer lighting connector sold separately. See your Mazda Dealer for details.

### 07 // ROOF RACK ATTACHMENTS /

The CX-9's generous storage options don't end with its spacious interior. You can also add Roof Rack Attachments\* to haul skis, a kayak\* or whatever items you need to make your outdoor adventures possible. Roof rack attachments require roof rails and cross bars.

### 02 // MUD GUARDS /

Equip your CX-9 with extra protection from dirt, mud, rocks and other road debris.

### 03 // ENGINE BLOCK HEATER /

Get up and running faster in the winter with an Engine Block Heater. Protect your engine, start it and battery, and warm up your CX-9 sooner when it's cold outside.

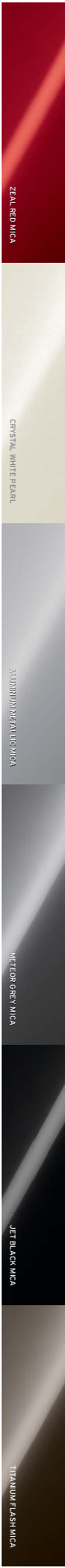
### 04 // ALL-WEATHER FLOOR MATS /

Help keep the great outdoors in its place. Custom-fitted to your CX-9, these All-Weather Floor Mats guard against snow, mud, sand and whatever else comes through the door.



Visit [mazda.ca](http://mazda.ca) for Accessory options.

\*Please refer to properly secure all cargo.



## CX-9 COLOUR COMBINATIONS

PAINT COLOURS	GS	GS with Luxury Package & GT
Black Cloth	BLACK CLOTH	BLACK LEATHER/ LUX SUEDE LEATHER*
Zeal Red Mica		•
Crystal White Pearl	•	• •
Aluminium Metallic Mica	•	•
Merlot Grey Mica	•	•
Jet Black Mica	•	
Titanium Flash Mica		•



## UPHOLSTERY

## WHEEL OPTIONS



## CX-9 SPECIFICATIONS AND CAPACITIES

SPECIFICATIONS	GS/GT
Engine type	3.7 L D30C 24-valve V6
Displacement	3.726 cc
Compression ratio	10:31
Horsepower SAE net	273 @ 4250 rpm
Torque SAE net lb. ft.	270 @ 4250 rpm
Fuel system	Multi-port Electronic Fuel Injection
Recommended fuel	Regular
Fuel economy (city/highway (L/100 km)*	
2WD	14.2/10.0
4WD	14.3/10.6
Curb weight (kg)	1937
2WD	2,055
4WD	2,165
*Estimated fuel economy based on Government of Canada's approved 5-cycle testing method. Your actual fuel consumption may vary depending on how, where and when you drive. For comparison purposes only. For more information on 5-cycle testing, visit <a href="http://maab.ca/5cycle">maab.ca/5cycle</a> .	
EXTENSION DIMENSIONS	2,875/3,108
Wheelbase/overall length (mm)	
Overall width (mm)	1,936
Track (ft/in) (mm)	1,728
Track (ft/in) (mm)	1,654/1,644
Turnin circle, curb-to-curb (m)	11.4
INTERIOR DIMENSIONS	
Headroom (ft/2nd/3rd) (mm)	1,005/990/899
Headroom (ft/2nd/3rd) with moonroof (mm)	975/960/899
Legroom (ft/2nd/3rd) (mm)	1,038/1,001/924
Shoulder room (ft/2nd/3rd) (mm)	1,510/1,491/1,444
Cargo length (rear seat to tailgate) (mm)	483
Cargo width (between quarter trims) (mm)	170
CAPACITIES	
Seating	7
Towing capacity (kg)	1,586 (3,500 lbs.)
Cargo volume (L)	487
with 2nd and 3rd row folded	2,851
Passenger volume (L)	3,947
Passenger volume with moonroof (L)	3,900
Total interior volume (L)	4,434
Total interior volume with moonroof (L)	4,386
Fuel tank (L)	76

## CX-9 FEATURES

ENGINE & TRANSMISSION	GS	GT
3.7 L D30C 24-valve V6	S	S
6-speed SPD-III mode automatic transmission	S	S
Front-wheel drive	S	-
Active Torque Split 4-Wheel Drive system (AWD)	0	S

SUSPENSION & BRAKES	GS	GT
Anti-Lock Brake System (ABS) with Electronic Brake Force Distribution (EBD)	S	S
Rack-and-pinion steering with engine pre-sensing variable power assist	S	S
Dynamic Stability Control (DSC) and Traction Control System (TCS)	S	S
Roll-Over Stability Control (ROSC)	S	S
Power-assisted front and rear ventilated 4-wheel disc brakes	S	S
Front independent strut suspension with coil springs	S	S
Rear independent multi-link suspension with coil springs	S	S
Front and rear stabilizer bars	S	S
Towing package (includes trailer cooling fan and radiator)	S	S

SAFETY & SECURITY	GS	GT
Dual front air bags, dual front side air bags, dual side air curtains	S	S
Roll-over sensor for air curtains	S	S
Air-thief alarm system	S	S
Engine immobilizer theft-deterrent system	S	S
Front active head restraints	S	S
Height-adjustable front and rear seat head restraints	S	S
Height adjustable front seatbelts	S	S
3-point seatbelts for all occupants	S	S
Integrated child-seat anchors on 2nd row seats	S	S
Driver's and front passenger's seatbelt pretensioners and load limiters	S	S
Blind Spot Monitoring System (BSM) with Rear Cross Traffic Alert (RCTA)	-	S

## CX-9 FEATURES (cont'd)

EXTERIOR	GS	GT
Body-colored door handles and tailgate garnish	S	-
Bright finish on door handles and silver finish tailgate garnish	-	S
Body-colored rear spoiler	S	S
Body-colored power-operated heated door mirrors	S	S
Tilt-in-reverse on door mirrors	-	S
Turn signal indicator on door mirrors	-	S
Privacy glass (rear door glass, quarter glass and rear gate glass)	S	S
Halogen headlights	S	-
Bi-xenon HID headlights with LED daytime running lights	-	S
Manual headlight leveling	-	S
Automatic headlight control	S	S
Fog lights	-	S
Bright ring finish at front headlights	-	S
Rear-sensing front wipers	S	S
Rear intermittent wiper/rear window defroster	S	S
Power tailgate	LP	S
Dual exhaust outlets	S	S

WHEELS & TIRES	GS	GT
18" alloy wheels with 245/60R18 all-season tires	-	S
20" bright finish alloy wheels with 245/50R20 all-season tires	S	-
Tire Pressure Monitoring System (TPMS)	S	S
Temporary spare tire	S	S
COMFORT & CONVENIENCE	GS	GT
Front and rear air conditioning with 3-zone climate control	S	S
Rear air conditioning display	S	S
Tilt and telescopic steering wheel	S	S
Steering-wheel-mounted cruise controls	S	S
Power door locks	S	S
Power windows with driver's front passenger's one-touch up and down feature	S	S
Auto up/down system for front windows	S	S
Remote keyless entry system with retractable key (includes two transmitters)	S	-
Advanced Keyless Entry System (keyless entry and start)	LP	S
Rear seat heater ducts	S	S
Driver's and passenger's sunvisors with illuminated covered vanity mirrors and extensions	S	S
Auto-dimming rear-view mirror with home-link garage door opener	S	S
2 power outlets (in front and centre console box)	S	S
Dual front cup holders, dual 2nd row cup holders and four 3rd row cup holders	S	S
Rear back-up sensors	-	S
Voice-activated navigation system	-	S
Power glass moonroof with sunshade, tilt-up ventilation and one-touch open and close	LP	S

SEAT & TRIM	GS	GT
6-way power adjustable driver's seat	S	S
Driver's seat power lumbar support	S	S
Driver's seat memory position (including exterior mirrors)	-	S
4-way power adjustable front passenger's seat	LP	S
Heated front seats with hip and low function	S	S
60/40 split-fold-down 2nd row seatback	S	S
50/50 split-fold-down 3rd row seatback	S	S



SEAT & TRIM (cont'd)	GS	GT
Premium cloth upholstery	S	-
Leather and Lux Suede*-trimmed upholstery (black interior only)	LP	S
Leather-trimmed upholstery (sand interior only)*	LP	S
Lux Suede*-trimmed door panel (front and rear black interior only)	LP	S
Leather-like door panel trim (front and rear; sand interior only)*	LP	S
Leather-wrapped steering wheel	S	-
Leather-wrapped steering wheel with piano black finish	-	S
Leather-wrapped shift knob	S	S
Inner door handles with bright finish	S	S
Power window switch side panel with piano black finish	S	-
Power window switch side panel with Bordeaux satin finish	-	S
Centre instrument panel trim with piano black finish	S	-
Centre instrument panel trim with Bordeaux satin finish	-	S

INSTRUMENT PANEL & STORAGE	GS	GT
Electroluminescent gauges	S	S
Blue needle lighting	-	S
Speedometer, tachometer, engine coolant temperature and fuel indicator	S	S
Exterior temperature gauge	S	S
Trip computer	S	S
Overhead console with sunglasses storage	S	S
Illuminated glove compartment	S	S
Warning lights for low fuel level, low windshield washer fluid, door ajar, check engine, oil pressure and air bags	S	S

AUDIO	GS	GT
AM/FM CD player with 6 speakers	-	S
10-speaker premium Bose® audio system with AM/FM, CD player	-	S
AudioLink® noise cancellation technology and Centrepoint® Surround Sound System	-	S
MP3 functionality on CD player	S	S
USB and auxiliary audio input	S	S
HID Radio	S	S
SiriusXM® Satellite Radio ( <i>free 6-month subscription</i> )	-	S
Bluetooth® hands-free phone capability with Audio Profile	S	S
Bluetooth® SAC texting function	S	S
Steering-wheel-mounted audio controls	S	S
5.8" audio display touchscreen with rearview camera	S	S
S = Standard    O = Optional    LP = Luxury Package    - = Not available		

## CX-9 PACKAGE

**LUXURY PACKAGE AVAILABLE ON GS WITH AWD AND ONLY 4-Wheel Drive. Advanced Keyless Entry System (keyless entry and start), power glass moonroof with sunshade, tilt-up ventilation and one-touch open and close feature, leather-trimmed upholstery (sand interior) *or* leather and Lux Suede\*-trimmed upholstery (black interior), Lux Suede\*-trimmed door panel (front and rear black interior) *or* leather-like door panel trim (front and rear; sand interior) and 4-way power-adjustable front passenger's seat.**

\*Sand interior is available by special order only.  
†Tilt-up ventilation and seat functions are only compatible with certain vehicles.  
‡Bluetooth is a registered trademark of Bluetooth SIG, Inc.  
§Bose is a registered trademark of Boston Scientific Corporation.  
¶SiriusXM is a registered trademark of Sirius XM Satellite Radio, Inc.  
©Lux Suede is a registered trademark of Severi Co., Ltd.





**MAZDA**

**UNLIMITED**

A first-of-its-kind warranty that lets you drive  
as much as you want, as far as you want.



**3-YEAR NEW VEHICLE**  
UNLIMITED MILEAGE WARRANTY



**3-YEAR ROADSIDE ASSISTANCE**  
UNLIMITED MILEAGE



**5-YEAR POWERTRAIN**  
UNLIMITED MILEAGE WARRANTY



**7-YEAR ANTI-PERFORATION**  
UNLIMITED MILEAGE WARRANTY

NEVER STOP IMPROVING. NEVER STOP PUSHING THE LIMITS.

THIS IS THE MAZDA WAY.

AND IT'S THE PHILOSOPHY THAT GUIDES EVERYTHING WE DO,  
FROM THE ENGINEERING AND DESIGN OF OUR NEW VEHICLES  
TO THE KIND OF WARRANTY WE OFFER.

It should come as no surprise that Mazda, a car company committed to an unrivalled driving experience, would defy convention to introduce a revolutionary new warranty program that lets you keep on driving. Introducing Mazda Unlimited, a first-of-its-kind warranty that lets you drive as much as you want, as far as you want. There are no limits on how far you can go. This is the Mazda Way.

#### What does Mazda Unlimited mean for you?

- Added confidence in the quality of the product you are driving
- Added protection, knowing Mazda will be there, kilometre after kilometre
- Added value, knowing that if you ever sell, trade or upgrade to a new vehicle during the warranty period, **Mazda Unlimited** will be transferable to the new owner
- Added peace of mind, knowing that there are no limits to how far you can go

To learn more about the Mazda Unlimited Warranty, visit [mazdaunlimited.ca](http://mazdaunlimited.ca).





**IT TAKES CONVICTION TO STAND UP TO THE NAYSAYERS.  
A CREATIVE FIRE THAT'S UNAFRAID OF THE BLANK PAGE.  
AND THE COURAGE TO FLIP CONVENTIONAL WISDOM ON ITS HEAD.  
THIS IS THE ONLY WAY TO CHANGE THE GAME.  
THAT'S WHY AT MAZDA WE USE INNOVATIVE THINKING AND TECHNOLOGIES  
TO ENGINEER VEHICLES THAT NEVER COMPROMISE PERFORMANCE OR STYLE.  
MAKING EVERY MAZDA MORE EXHILARATING.  
THESE ARE ACTIONS, NOT WORDS. PROOF, NOT THEORIES.**

*THIS IS THE MAZDA WAY.*

A rear three-quarter view of a red Mazda CX-7 SUV parked on a wet, reflective surface. The car's reflection is clearly visible on the ground. In the background, there are dark, silhouetted mountains under a heavy, cloudy sky with some light breaking through near the horizon. The overall mood is dramatic and emphasizes the car's design against a rugged landscape.

*zoom-zoom*

**IT TAKES CONVICTION TO STAND UP TO THE NAYSAYERS.  
A CREATIVE FIRE THAT'S UNAFRAID OF THE BLANK PAGE.  
AND THE COURAGE TO FLIP CONVENTIONAL WISDOM ON ITS HEAD.  
THIS IS THE ONLY WAY TO CHANGE THE GAME.  
THAT'S WHY AT MAZDA WE USE INNOVATIVE THINKING AND TECHNOLOGIES  
TO ENGINEER VEHICLES THAT NEVER COMPROMISE PERFORMANCE OR STYLE.  
MAKING EVERY MAZDA MORE EXHILARATING.  
THESE ARE ACTIONS, NOT WORDS. PROOF, NOT THEORIES.**

*THIS IS THE MAZDA WAY.*

A rear three-quarter view of a red Mazda CX-7 SUV parked on a wet, reflective surface. The car's reflection is clearly visible on the ground. In the background, there are dark, silhouetted mountains under a heavy, cloudy sky with some light breaking through near the horizon. The overall mood is dramatic and emphasizes the car's design against a rugged landscape.

*zoom-zoom*

**IT TAKES CONVICTION TO STAND UP TO THE NAYSAYERS.  
A CREATIVE FIRE THAT'S UNAFRAID OF THE BLANK PAGE.  
AND THE COURAGE TO FLIP CONVENTIONAL WISDOM ON ITS HEAD.  
THIS IS THE ONLY WAY TO CHANGE THE GAME.  
THAT'S WHY AT MAZDA WE USE INNOVATIVE THINKING AND TECHNOLOGIES  
TO ENGINEER VEHICLES THAT NEVER COMPROMISE PERFORMANCE OR STYLE.  
MAKING EVERY MAZDA MORE EXHILARATING.  
THESE ARE ACTIONS, NOT WORDS. PROOF, NOT THEORIES.**

*THIS IS THE MAZDA WAY.*

A rear three-quarter view of a red Mazda CX-7 SUV parked on a wet, reflective surface. The car's reflection is clearly visible on the ground. In the background, there are dark, silhouetted mountains under a heavy, cloudy sky with some light breaking through near the horizon. The overall mood is dramatic and emphasizes the car's design against a stark landscape.

*zoom-zoom*



MIX  
Paper from  
responsible sources  
FSC® C010428