

SPORTY VERSATILITY

Make no mistake about it, the 2015 Lancer Sportback is a European-styled, premium five-door hatch that delivers the performance of a coupe. Its precise handling and comfortable ride are achieved through Mitsubishi's legendary performance dynamics. With its advanced MIVEC DOHC 2.0L 148 HP engine, matched to either a 5-speed manual transmission or a Continuously Variable Transmission (CVT), Lancer Sportback offers sporty, economical driving and fun-filled acceleration. Its rigid unibody chassis, supporting its elegant, aerodynamic body with its distinctive front end, provides smooth over and under airflow for enhanced stability. Along with its sports-tuned suspension that combines MacPherson struts in front with a multi-link suspension in the rear, Lancer Sportback delivers a perfect blend of road-gripping performance and responsive handling that will take the drudgery out of any practical chore and accomplish it with European flair. And being backed by the automotive industry's most comprehensive warranty, you can drive with absolute confidence knowing that you are protected by Mitsubishi's 10-Year/160,000-km powertrain limited warranty**, a 5-year/100,000-km fully transferable new vehicle limited warranty; the only vehicle manufacturer that offers up to a 5-year/100,000-km accessory warranty and 5-year/unlimited-km roadside assistance. So not only do you get sporty versatility, but also you'll also get to enjoy it for many years to come.



10 YEAR
160,000 KM**
POWERTRAIN
LTD WARRANTY

**BUILT BETTER.
BACKED BETTER.**

Technical data, equipment and options shown are based on the latest information available at the time of printing and are subject to change without notice. Colours may vary due to the printing process. Exterior and interior lights on vehicles shown may be illuminated for illustration purposes only. Vehicles are shown with optional equipment or images may be international models shown. Not all equipment is available on every model. For complete details about equipment configuration and Mitsubishi Genuine Accessories, please contact your Mitsubishi Retailer. ©2014 Mitsubishi Motor Sales of Canada Inc. The Bluetooth® word mark and logos are owned by the Bluetooth SIG, Inc., and any use of such marks by Mitsubishi is under license. ©2014 Sirius XM Canada Inc. "SiriusXM", SiriusXM Satellite Radio subscriptions sold after 3-month prepaid period expires. Subscriptions are governed by SiriusXM Customer Agreement; see siriusxm.ca. "SiriusXM", the SiriusXM logo, channel names and logos are trademarks of SiriusXM Radio Inc. and are used under licence. **Whichever comes first. Regular maintenance not included. See dealer or mitsubishi-motors.ca for warranty terms, restrictions and details. Not all customers will qualify. *3,027L when equipped with sunroof.

MITSUBISHI-MOTORS.CA

COLOURS



APEX SILVER
BLACK INTERIOR



TITANIUM GREY
BLACK INTERIOR



OCTANE BLUE PEARL
BLACK INTERIOR



WICKED WHITE
BLACK INTERIOR



RALLY RED
BLACK INTERIOR



TARMAC BLACK PEARL
BLACK INTERIOR



TRIMS AND OPTIONS

FOR A COMPLETE LIST OF FEATURES, TECHNICAL SPECIFICATIONS AND OPTIONS, VISIT WWW.MITSUBISHI-MOTORS.CA

SE STANDARD SPECIFICATIONS

5-DOOR HATCHBACK, 5-PASSENGER, 2.0L DOHC MIVEC 16-VALVE, 148 HP

- 2.0L DOHC MIVEC 4-CYLINDER ENGINE (148 HP)
- 5-SPEED MANUAL TRANSMISSION
- DUAL FRONT AIRBAGS WITH SEAT SENSORS, SIDE-IMPACT CURTAIN AIRBAGS (FRONT & REAR), FRONT SEAT-MOUNTED SIDE-IMPACT AIRBAGS & DRIVER'S KNEE AIRBAG
- ANTI-LOCK BRAKING SYSTEM (ABS) WITH ELECTRONIC BRAKE-FORCE DISTRIBUTION (EBD), BRAKE ASSIST SYSTEM (BAS) & BRAKE OVERRIDE SYSTEM (BOS)
- FRONT & REAR DISC BRAKES
- ACTIVE STABILITY CONTROL (ASC)
- TRACTION CONTROL LOGIC (TCL)
- ANTI-THEFT ENGINE IMMOBILIZER
- TIRE PRESSURE MONITORING SYSTEM (TPMS)
- LATCH SYSTEM (LOWER ANCHORS & TETHERS FOR CHILD RESTRAINT SEATS)

- REAR DOOR CHILD SAFETY LOCKS
- 3-POINT SEATBELTS FOR ALL SEATING POSITIONS
- HEIGHT-ADJUSTABLE FRONT SEATBELTS
- FRONT SEATBELT PRETENSIONERS & FORCE LIMITERS
- HEIGHT-ADJUSTABLE HEAD RESTRAINTS (1ST- & 2ND-ROW PASSENGERS)
- RISE BODY CONSTRUCTION
- DAYTIME RUNNING LAMPS
- REAR CENTRE HIGH-MOUNT STOP LAMP
- 16" ALLOY WHEELS
- P205/60 R16 ALL-SEASON TIRES
- AUTO-OFF HALOGEN HEADLAMPS
- RALLIART FRONT AERO BUMPER & GRILLE WITH CHROME SURROUND & BODY COLOUR CENTRE

- REAR WING SPOILER
- HEATED & FOLDING POWER SIDE-VIEW MIRRORS WITH INTEGRATED TURN SIGNAL LAMP
- POWER WINDOWS WITH AUTO-UP & DOWN DRIVER'S WINDOW
- POWER DOOR LOCKS WITH REMOTE KEYLESS ENTRY SYSTEM
- DARK SILVER INSTRUMENT PANEL
- TILT & HEIGHT-ADJUSTABLE STEERING WHEEL
- AIR CONDITIONING
- HEATED FRONT SEATS
- 6-WAY ADJUSTABLE DRIVER'S SEAT
- 60/40-SPLIT FOLDING REAR SEAT
- STEERING WHEEL-MOUNTED CRUISE & AUDIO CONTROLS
- FABRIC SEATING SURFACES

- MULTI-INFORMATION DISPLAY WITH GEAR SHIFT INDICATOR
- HEIGHT-ADJUSTABLE CARGO FLOOR (2 POSITIONS)
- ANTI-THEFT SECURITY ALARM SYSTEM
- BLUETOOTH® 2.0 HANDS-FREE CELLULAR PHONE INTERFACE WITH STREAMING AUDIO & USB INPUT WITH VOICE CONTROL
- 140-WATT AM/FM/CD/MP3 AUDIO WITH 4 SPEAKERS (DIGITAL SIGNAL PROCESSOR, SPEED-COMPENSATED VOLUME & EQUALIZATION)

OPTIONS

- CONTINUOUSLY VARIABLE TRANSMISSION (CVT) WITH "ECO" MODE INDICATOR (REPLACES 5-SPEED MANUAL TRANSMISSION WITH GEAR SHIFT INDICATOR)

LIMITED EDITION

- POWER GLASS SUNROOF WITH SUNSHADE
- FRONT FOG LAMPS
- LEATHER-WRAPPED STEERING WHEEL & GEAR SHIFT KNOB
- CHROME EXHAUST FINISHER

GT ALL SE STANDARD SPECIFICATIONS, PLUS:

5-DOOR HATCHBACK, 5-PASSENGER, 2.0L DOHC MIVEC 16-VALVE, 148 HP

- CHROME-PLATED INTERIOR DOOR HANDLES
- 16" MACHINE FINISH ALLOY WHEELS
- AUTOMATIC CLIMATE CONTROL
- LEATHER SEATING SURFACES
- POWER DOOR LOCKS WITH FAST-KEY KEYLESS ENTRY & IGNITION SYSTEM
- POWER GLASS SUNROOF WITH SUNSHADE
- FRONT FOG LAMPS
- LEATHER-WRAPPED STEERING WHEEL AND GEAR SHIFT KNOB
- HIGH-CONTRAST SPEEDOMETER & TACHOMETER
- COLOUR MULTI-INFORMATION DISPLAY WITH GEAR SHIFT INDICATOR

- CHROME EXHAUST FINISHER
- PADDLE SHIFTERS
- GLOSS BLACK INSTRUMENT PANEL
- RALLIART FRONT AERO BUMPER & GRILLE WITH CHROME SURROUND & BLACK CENTRE

- 710-WATT ROCKFORD FOSGATE® PUNCH® DISPLAY AUDIO SYSTEM WITH 9 SPEAKERS, INCLUDING 10" SUBWOOFER (DIGITAL PROCESSOR, SPEED-COMPENSATED VOLUME & EQUALIZATION)
- SIRIUSXM® SATELLITE RADIO WITH 3-MONTH COMPLIMENTARY SERVICE!

2015 LANCER SPORTBACK



GREAT PERFORMANCE, SLEEK EUROPEAN STYLING

The 2015 Lancer Sportback is outfitted with a rally-inspired sport-tuned suspension, modern transmissions and a powerful MIVEC DOHC engine. Matched to its sporty performance is an equally athletic body featuring sleek, European styling exemplified by its smooth, flowing lines and roof top spoiler that not only improve aerodynamics, but enhance performance and fuel efficiency. For practicality, the hatchback door opens up a cavernous cabin with an incredible 3,067 litres* of total space. And for versatility, there are 60/40-split folding rear seats, and an easily accessible cargo hold with a unique dual-level floor that can drop an extra 90 mm. Either way, if you choose to be practical while having fun or adding fun to your practicality, you can be assured that you'll be uniformly safe in the 2015 Lancer Sportback.





ENDLESS POSSIBILITIES

The 2015 Lancer Sportback, with its space-efficient design, offers countless possibilities for hauling practically anything. The stylish, five-door hatch with room for five adult passengers can accommodate cargo for outdoor excursions as easily as a trip to the big-box store, or shuffling the kids and their equipment to the sports arena. And with the available integrated plug-in roof racks, even more storage is at hand for bicycles, skis or snowboards, as well as a variety of available cargo boxes offering additional versatility. But don't let the thought of being a hauler detract from the Sportback's ability to deliver sheer driving pleasure in comfort and style. With available leather seating, leather-wrapped multi-function steering wheel, automatic climate control, a powerful 710-Watt Rockford Fosgate® PUNCH® Display Audio System with iPod or MP3 connectivity, CD player and SiriusXM® Satellite Radio with 3-Month complimentary service*, your ride will be anything but dull.

(((SiriusXM))) | Rockford Fosgate | Bluetooth | USB

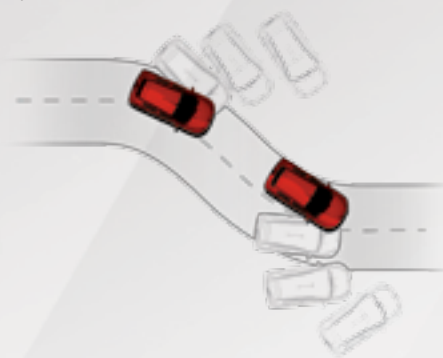
ALWAYS ON GUARD

Not only does the 2015 Lancer Sportback balance versatility and performance, it also balances power with control. With both active and passive safety systems monitoring the vehicle's behaviour, your most precious cargo is always under Mitsubishi's watchful safety technologies. Active Stability Control (ASC) and Traction Control Logic (TCL) help drivers maintain control in adverse conditions and during emergency manoeuvres. Sensors monitor traction and work with the Anti-lock Braking System (ABS) to counteract slipping. Applying the brakes on specific wheels, the system helps the vehicle track in the driver's intended direction. With Sportback's Anti-lock Braking System (ABS) with Electronic Brake-Force Distribution (EBD), control of the vehicle is improved under the most demanding conditions. For cabin safety, the Sportback's Supplemental Restraint System (SRS) consists of seven airbags, including advanced dual-stage front airbags, front-seat side, and side-impact curtain airbags. It also features a standard driver's knee airbag, which helps stabilize the driver's legs and lower body in the event of a collision. With other safety features like the Reinforced Impact Safety Evolution (RISE) unibody construction and anti-theft security alarm system, your Lancer Sportback is always on guard for you.



ACTIVE STABILITY CONTROL (ASC) AND TRACTION CONTROL LOGIC (TCL)

Active Stability Control (ASC) and Traction Control Logic (TCL) employ a series of sensors that constantly monitor the grip of each tire. If a wheel begins to slip, ASC and TCL automatically communicate with the Anti-lock Braking System (ABS) to apply the brakes to the appropriate wheels to keep you in control.



LATCH SYSTEM

The Lower Anchors and Tethers for Children (LATCH) system not only makes installing child seats a snap, it gives you peace of mind knowing everyone is strapped in securely.

ANTI-LOCK BRAKING SYSTEM (ABS)

Greater, safer control in all conditions: Sportback is ready for the unexpected. ABS helps maintain steering control and avoid hazards by adjusting the braking pressure to prevent wheel lock under hard braking or during an emergency stop.



SEVEN-AIRBAG SAFETY SYSTEM

With the standard seven SRS airbag system, you and your passengers are protected from all angles. Drive with confidence knowing that the Lancer Sportback is equipped with front, side, curtain and a driver's knee airbag that helps stabilize and protect the driver's legs and lower body in the event of a collision.



CONTINUOUSLY VARIABLE TRANSMISSION (CVT)

One of the smoothest, most efficient drivetrains available, a Continuously Variable Transmission (CVT) operates on a pulley system that allows infinite variability between the highest and lowest ratios. Instead of shifting gears, it adapts to changing vehicle speeds and keeps the engine operating efficiently, while improving fuel economy.

SPORTY & EFFICIENT MIVEC ENGINE

The Lancer Sportback boasts an all-aluminum 2.0-litre four-cylinder engine that delivers 148 horsepower and a highly economical 7.1L/100 km on the highway. The Mitsubishi Innovative Valve Timing Electronic Control (MIVEC) engine optimizes valve timing at every speed, providing the ideal balance of power and fuel efficiency.



FUEL ECONOMY	CITY	HWY	COMBINED
	L/100 KM	L/100 KM	L/100 KM
2.0L MT	9.8L	7.1L	8.6L
2.0L CVT	9.6L	7.3L	8.6L

* Based on Natural Resources Canada's new testing methodology.

AMPLE CARGO ROOM

The Lancer Sportback isn't just good looking, it's also built to be practical. With a maximum cargo capacity of 1,319L, a wide rear hatch, 60/40-split-fold rear seats and a dual-level cargo floor that can drop an extra 90 mm, it holds whatever you want to take with you, with room – and style – to spare.

1,319L | MAXIMUM CARGO CAPACITY



PADDLE SHIFTERS

The available lightweight, racing-inspired paddle shifters offer real hands-on performance. Pull the right paddle to upshift the Continuously Variable Transmission (CVT) and the left paddle to downshift.

SPORTY SUSPENSION

Lancer Sportback's sporty suspension combines MacPherson struts in front with a multi-link suspension in the rear to deliver the perfect blend of road-hugging handling and a comfortable ride. So whether you're driving up a twisty mountain road or just avoiding the potholes on your way to work, the Lancer Sportback always stays smooth, solid and responsive.