



2017

CHRYSLER 200



TAKE INGENUITY FARTHER



200C shown in Granite Crystal Metallic



200S shown in Vivid Blue Pearl

OPPORTUNITY AT EVERY TURN

The Chrysler 200 is a prodigy of style and agility, increasing its driver's freedom to travel confidently. This is where the everyday commuter meets weekend-getaway for the perfect balance of premium design, power, fuel efficiency and driving dynamics. The sleek exterior offers an athletic stance with the choice of two world-class engines, including an available 3.6L V6 or standard

2.4L engine that delivers up to 6.6 L/100 km hwy (43 mpg)*. A class-exclusive^{1†} 9-speed automatic transmission and available Sport mode with steering-wheel paddle shifters provide exceptional ride and handling. The available technologically advanced all-wheel-drive system allows the 200 to respond assuredly in nearly any road or weather conditions.

*Full fuel economy details on page 19. [†]A note about this catalogue: all disclaimers and disclosures can be found on the back cover.

PREMIUM CHARACTERISTICS

State-of-the-art technology offers over 60 standard and available safety and security features. The available Uconnect® 8.4-inch, largest-in-class¹ touchscreen system keeps drivers and passengers connected and entertained. The 200 is built with the tight uniformity of element-to-element fit and finish, which is essential to its smooth and quiet ride.

The fascia carries distinctive character lines to the upper grille and Chrysler wing badge — treatments that visually close gaps — delivering a premium appearance, as well as advanced aerodynamic performance. The Alloy Edition displays unique Dark Bronze styling cues inside and out, highlighting an original spin on the already sporty 200S.

STYLE ON COMMAND



200S shown in Bright White with Mopar® Exterior Body Kit

SOUND CRAFTSMANSHIP

The athletic architecture, tight fit and finish, and insulation result in a reduction in wind noise along with a solid ride and handling experience. This design also contributes to the quietness of the 200 cabin, thanks to a triple door-seal system, along with sound-reducing applications and materials. Illuminating the visual effects, high-performance lighting systems raise awareness of your 200's presence to other drivers, even on low-lit roads.

WELL-APPOINTED

The aggressive stance is amplified by premium details like the distinctly brilliant LED taillamps and available LED daytime running lamps (DRLs) light pipes defining the "eyes" of the front fascia. The Chrome grille surround and Chrome rear-fascia accents add a level of sophistication, as well as the body-colour door handles and mirrors with integrated turn signals — signifying thought-out purpose to every trim level.

WIDE-EYED FOCUS

Standard halogen projector headlamps reduce glare and help provide a wider-spread light pattern to enhance road visibility with higher output than traditional halogen bulbs. The available High Intensity Discharge (HID) headlamps with high/low-beam capability produce a significantly brighter white beam resembling natural daylight, resulting in a clearer, crisper visual path.



HIGH PERFORMANCE LIGHTING

The available LED projector fog lamps are set inside bezels within the lower grille of the front fascia. The lamps are angled slightly downward, reducing glare and illuminating the road ahead, allowing for better visibility, and enhancing the ability for other drivers on the road to discern your 200 in heavy fog.

SKYLIGHT EFFECTS

In addition to offering a single-pane sunroof, an available dual-pane sunroof provides a glass ceiling for both rows of passengers to enjoy. One-touch power opens, closes or vents the front panel, and a power sunshade covers the tinted glass when closed. The seals are flush with the roof to eliminate wind noise when the sunroof is closed, while an integrated wind deflector reduces turbulence when it's open.

OPT FOR OUTPUT ON COMMAND WITH 295 V6 HORSEPOWER

TWO POWERFULLY EFFICIENT ENGINES:

2.4L TIGERSHARK® MULTIAIR® I-4

Standard on all 2017 Chrysler 200 front-wheel-drive (FWD) models, this engine takes full advantage of the exclusive MultiAir valve train system. It includes components designed to reduce friction for enhanced performance and fuel economy. The fun-to-drive vehicle dynamics include 184 horsepower, 173 lb-ft of torque and fuel economy as efficient as 6.6 L/100 km (43 mpg) hwy.

CANADA'S BEST-SELLING ENGINE² 3.6L PENTASTAR™ VARIABLE VALVE TIMING (VVT) V6

Applying advanced engine technology, the available 3.6L Pentastar VVT V6 engine, is a three-time winner of *Wards* "10 Best Engines" award*. The vigorous 295 horsepower and 262 lb-ft of torque delivers a smooth, responsive driving experience with an impressive fuel efficiency of 7.6 L/100 km (37 mpg) hwy.

9-SPEED AUTOMATIC TRANSMISSION

Standard with both engines, the class-exclusive¹ 9-speed transmission provides excellent acceleration with highly efficient fuel consumption due to the ratio steps between the gears, which are much smaller than those of a 6-speed transmission. The intuitive Satin Chrome-finished Rotary E-shift located on the centre console changes shift modes with a simple turn, while opening up space for the console storage.

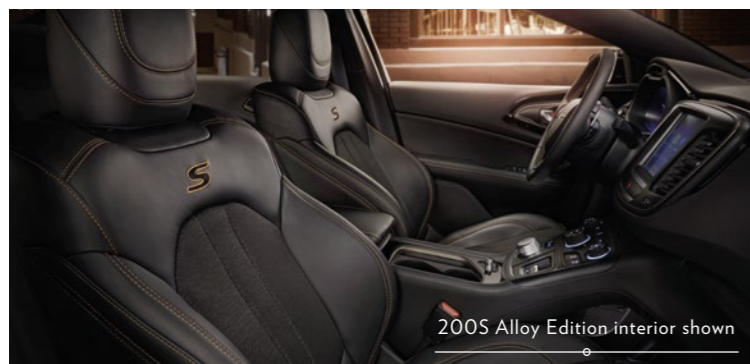
SPORT MODE PERFORMANCE

The available Sport mode (S) on the E-shift dial taps into the full performance-driving capabilities by enhancing the engine, transmission and steering dynamics. Sport mode also adds the option to manually shift gears with steering-wheel paddle shifters. When in Sport mode, the available automatic all-wheel drive (AWD) is fully connected to deliver power to the front and rear wheels for enhanced sports sedan performance.

200S – BOLD ATTITUDE

Appearance and performance are key factors in bringing attitude along, including Gloss Black exterior accents and 18-inch aluminum wheels. Your adrenaline gets a boost from the available 3.6L VVT V6 engine, Sport mode with paddle shifters, sport suspension, rear fascia-integrated dual exhaust and more aggressive AWD performance. From the sport-sculpted, 12-way power driver's seat with 4-way power lumbar adjust and leather-wrapped steering wheel, the 200S interior enhances your driving enthusiasm.

*Awarded in 2011, 2012 and 2013.



200S Alloy Edition interior shown

200S ALLOY EDITION

Special metalwork alloys and bronze finishes adorn the exterior and interior detailing on the 200S Alloy Edition. The exterior includes Dark Bronze upper and lower grille surround, Dark Bronze 19-inch aluminum wheels, Liquid Titanium wing badge and Titanium-finish exhaust tips. The unique interior offers Black Nappa leather-faced seats with Caramel accent-stitching and Titanium-finish accents.



200S Alloy Edition shown in Gloss Black

THE MOST TECHNOLOGICALLY ADVANCED ALL-WHEEL-DRIVE SYSTEM IN ITS CLASS¹



2005 AWD shown in Granite Crystal Metallic

TRACK-MAKING TRACTION

The available advanced all-wheel-drive (AWD) system detects wheel-slip and kicks in before you even realize you need it by automatically distributing power between front and rear wheels. The system also engages when the driver turns off the Electronic Stability Control (ESC)³ system or when driving in Sport mode. In cases of inclement weather, AWD is tuned to minimize oversteer and maximize traction where snow, ice, mud, sand or gravel are present. The class-exclusive¹ automatic fully disconnecting rear axle gives you the ultimate in performance and traction when you need it and optimized fuel economy when you don't.

INCREASE YOUR STABILITY

To help maintain vehicle stability in adverse driving conditions, ESC³ and Brake Assist work with an all-speed traction control system to limit oversteer or understeer, and automatically activates the brakes when needed. When in Sport mode, sophisticated sensors loosen the ESC³ system to allow additional wheelspin for more spirited driving manoeuvres. Also when in Sport mode, the available automatic AWD is fully connected to deliver power to the front and rear wheels for enhanced performance.



FUEL-OPTIMIZED REAR-AXLE DISCONNECT

Supplying the proper wheel torque (power) to the front, rear or all wheels for any driving condition, the intuitive all-wheel-drive (AWD) system contributes to maintaining driving performance when road surface traction becomes limited. The automatic rear-axle-disconnect system maximizes fuel efficiency by removing power to the rear wheels when front-wheel-drive performance is adequate.



7-inch full-colour display



Voice Command convenience from the steering wheel



PREMIUM 10-SPEAKER SURROUND SOUND

Immerse yourself in state-of-the-art sound engineering for a luxury audio experience. Specially designed in tandem with Alpine® Electronics to maximize the vehicle's acoustics, this premium system is available on 200S and standard on 200C. It incorporates an 11-channel amplifier with 506 watts of power, three speakers located in the instrument panel, two in the front doors, two in the rear doors, two in the C-pillars and an 8-inch subwoofer centre-positioned in the rear shelf.

MEDIA HUB

The centre-console outlets allow connection to compatible devices via USB port and auxiliary audio input jack. The available Uconnect system displays song and album titles from connected devices, including those connected via Bluetooth streaming audio, which can be controlled with Voice Command⁶, steering-wheel controls or the radio touchscreen.

THE LARGEST TOUCHSCREEN IN ITS CLASS¹



Available 8.4-inch Uconnect touchscreen

7-INCH FULL-COLOUR CUSTOMIZABLE DISPLAY CENTRE

Personalize the information you want to see. The available 7-inch full-colour display in the instrument cluster seamlessly integrates crisp, configurable graphics with analogue gauges. The distinctive blue backlit display allows for a wide range of settings, including audio, speed, compass, temperature, fuel economy, cruise control, vehicle maintenance status and engine performance.

UCONNECT® HELPS KEEP YOU FOCUSED

The available Uconnect technology enhances all of the familiar controls and capability you've come to rely upon. Streamlining device compatibility and its intuitive interface, the 5.0 and 8.4-inch touchscreen systems allow for improved connectivity, navigation⁴, information and entertainment, all available in your vehicle and easy to access.

CONVENIENCE AT THE TOUCH OF A BUTTON

The **Drag and Drop** menu bar personalizes the touchscreen by holding your top six services in the home row. With **Siri® Eyes Free⁵** on your iPhone® 4s or later, initiate Siri sessions with the Voice Recognition button on the steering wheel to give voice commands⁶ to call, text, email, play music and get directions. The **Do Not Disturb** feature can route all incoming calls to voice mail, suppress texts, receive a visual prompt for incoming calls and texts, and send an automated reply. All available.

HANDS-FREE COMMUNICATION⁶

Pairing a Bluetooth®-enabled phone with available Uconnect® systems is as simple as pressing the Phone button on the steering wheel and following the prompts. Once the phone is paired, simply press the Phone button again to make a call.

VOICE-ACTIVATED TEXT⁷

The available Voice Text Reply⁶ feature announces incoming text messages and reads them to you simply by pressing the Phone button and saying, "Listen." It also allows you to reply by saying any of the 18 predefined responses such as "Yes" or "I'm on my way."

ONE-STEP NAVIGATION⁴

This easy-to-use in-dash navigation system quickly and easily allows you to say a destination in one command. Available navigation features 3D buildings, landmarks, terrain mapping and extensive point-of-interest listings, as well as detailed models and speed limits along your route.

VOICE COMMAND⁶

Use your voice to select AM/FM radio stations or available SiriusXM satellite radio⁸ channels (one-year subscription included) or make calls, all while keeping your hands on the wheel. Select available navigation⁴ destinations and record voice memos.

COMFORT SETTINGS

Operated via touchscreen controls, select your climate preferences from your Uconnect system (if equipped).



200 Alpine system 10-speaker schematic



200C interior shown with Nappa Leather in Linen



STANDARD KEYLESS ENTER 'N GO™

Gain access to your vehicle without fumbling for the key or when your arms are full. With the key fob in hand or carried in a pocket or purse, simply touch the driver's door handle to open the door or push the deck lid button to open the trunk. Keyless Enter 'n Go allows you to start the engine with the press of the ignition button when the brake pedal is depressed.

BEST-IN-CLASS¹ INTERIOR STORAGE

The open centre-console pass-through is designed for conveniences and exclusive storage opportunities. Featuring a rubber mat surface, the space can easily accommodate a tablet or purse and connects to a driver and passenger media hub under the centre armrest for USB and auxiliary media connections. Access to this hub and storage area is enabled by an ingenious three-position sliding cup holder.

AUTOMATIC ANTI-FOG FEATURE

An available humidity sensor system — located in the base of the interior mirror — monitors interior and window temperatures, as well as condensation levels, to automatically reduce misting-up of the windows and enhance climate comfort.

MEMORY SEAT, MIRRORS AND RADIO

The Chrysler 200 stores preferred settings for two drivers including seat position, exterior mirror positions and radio station presets. To activate the saved settings, simply push the unlock button on the key fob or the memory buttons on the driver's-side door panel.

BACKSEAT ROOM

The 200 boasts a backseat area that includes wide seat tracks for ample rear-passenger foot space, a fold-down armrest with integrated cup holders and three head restraints.² The 60/40 split-folding rear seatbacks offer flexible storage and the rear-seat pass-through helps accommodate larger items, which contribute to the 200 having best-in-class¹ interior storage.



AWARD-WINNING INTERIOR

COMFORT AND STYLE IN MIND

Carefully engineered seats support contours of the body with coverings offered in cloth, a cloth and leather combination, or leather surfaces. Multi-density foam in the lower seat, seatback and bolsters enhances comfort, while stiffer foams in the side bolsters give side-to-side occupant stability. Front seatbacks are also available with a four-way lumbar adjust for custom positioning.

HEATED AND VENTILATED FRONT SEATS

Available heated front seats have three temperature settings for sub-zero days, while the ventilation feature allows for faster cooling of occupants in warmer weather. These features can be programmed to activate the driver's seat automatically with the ultimate luxury convenience of an available remote start system.

OVER 60 STANDARD AND AVAILABLE SAFETY AND SECURITY FEATURES



200S shown in Vivid Blue Pearl



FWD model only.



When equipped with optional front crash prevention.

ACTIVE FEATURES THAT AUTOMATICALLY REACT TO HELP PREVENT A POTENTIAL IMPACT



PARKVIEW® REAR BACK-UP CAMERA¹⁰

This available system displays a wide-angle view of the area immediately behind the vehicle through the 5- or 8.4-inch Uconnect® touchscreens. The display includes dynamic grid lines to aid you when manoeuvring into parking spaces or narrow areas.



LANE DEPARTURE WARNING (LDW) WITH LANE KEEP ASSIST¹⁰

With a camera mounted inside the rearview mirror and on the front fascia, this available system determines where the vehicle is positioned between the road lines and monitors the vehicle's movement down the road. Should the vehicle begin to move onto either line without the driver activating the turn signal, the LDW system will warn the driver that the car is about to move out of the lane through a slight vibration in the steering wheel. If nothing is done to correct the drift, the system will automatically realign the vehicle to its correct lane position.



REACTIVE FRONT HEAD RESTRAINTS⁹

In the event of a rear-end collision, the front head restraints automatically move forward and upward to decrease the space between the head restraint and the occupant's head, helping to reduce the chance of injury.



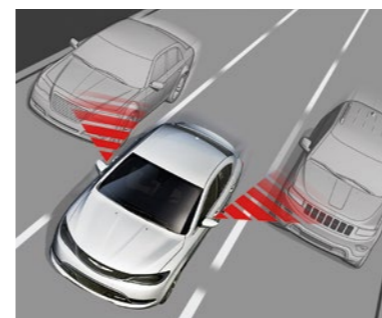
ADAPTIVE CRUISE CONTROL (ACC) WITH STOP AND GO¹⁰

Using radar and video sensors to automatically adjust your cruising speed based on preset speed and vehicle distance settings. In certain conditions, such as stop-and-go traffic, the available system is able to bring the vehicle to a complete stop without any driver intervention, then prompt the driver to press the Resume button or tap the accelerator to re-engage to safe-range speeds as traffic begins to move.



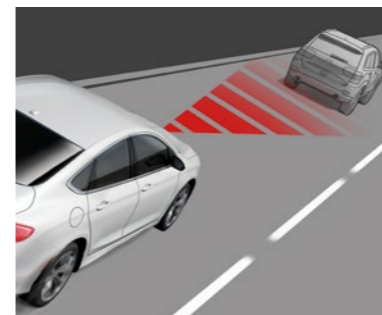
PARALLEL AND PERPENDICULAR PARK ASSIST¹⁰

Using ultrasonic parking sensors on the bumpers, this driver's assistance feature will find and guide the vehicle into the parking space when a parking manoeuvre is initiated. The parking guidance system automatically controls the steering angle while the driver controls the gear position, brake and accelerator. Read-outs located in the cluster display notify the driver of front/rear object proximity. Parallel parking is possible for either side of the car. During perpendicular parking, the vehicle is backed into the space and the system notifies you when the manoeuvre is complete.



BLIND-SPOT MONITORING (BSM) WITH REAR CROSS-PATH DETECTION¹⁰

When driving forward, the available BSM system continually monitors the vehicle's side blind zones using dual radar sensors. When an object is detected, an indicator illuminates in the appropriate sideview mirror and, if the turn signal is activated, an audible notification sounds. In Reverse, Rear Cross-Path Detection automatically monitors for objects and vehicles in perpendicular relationships to the vehicle and is ideal when backing out of tight parking spaces or alleys.



FORWARD COLLISION WARNING (FCW) WITH ACTIVE BRAKING¹⁰

Using radar and video sensors, this available system detects whether the vehicle is approaching another vehicle or large obstacle in its path too rapidly. If an object is detected, the system can provide an audible warning and help the driver avoid or mitigate an incident. The driver has the ability to adjust the sensitivity and turn brake support on or off.



ELECTRONIC PARK BRAKE WITH SAFE HOLD

The standard class-exclusive¹ Electronic Park Brake with Safe Hold feature secures the wheels if it detects the driver exiting the vehicle without it being in the Park gear. It includes automatic drive-away release when the driver is in the seated and buckled position.

200 LX



POWERTRAIN

- 2.4L Tigershark® MultiAir® I-4 with 9-speed automatic

STANDARD EQUIPMENT INTERIOR AMENITIES

- 3.5-inch Electronic Vehicle Information Centre (EVIC)
- Air conditioning with micron filter
- Ambient LED interior lighting
- Front overhead map lights
- Media Centre: Radio 3.0 multimedia centre with 4 speakers, remote USB port and auxiliary audio input jack
- Outside temperature display
- Power locks, power windows, driver 1-touch down
- Rear window defroster
- Rotary dial E-shift
- Seating:
 - 6-way manual driver and front-passenger seats
 - 60/40 split-folding rear seat with trunk pass-through
 - Premium cloth seats
- Steering wheel-mounted audio and cruise controls
- Storage:
 - Front seatback map pockets
 - Glove box with light and lock
 - Overhead console with sunglasses holder
 - Rear-seat armrest with cup holders
 - Unique centre console with sliding armrest, cup holders and pass-through
- Sun visors with mirrors
- Tilt/telescoping steering column
- Tire pressure monitoring lamp
- Trunk lamp
- Two 12-volt power outlets

EXTERIOR FEATURES

- Active grille shutters
- Automatic bifunctional halogen projector headlamps with headlamp-off time delay
- Body-colour fascia and door handles
- Body-colour power mirrors
- Chrome upper grille and headlamp surrounds
- Halogen daytime running lamps (DRLs)
- Hidden exhaust
- LED taillamps
- Solar-control glass
- Tempered front-door glass
- Tinted windshield
- Touring suspension
- Underbody aerodynamic treatment
- Wheels and Tires:
 - 17-inch wheel covers
 - 215/55R17 BSW all-season touring

SAFETY & SECURITY

- 4-wheel antilock disc brakes
- 8 air bags;¹¹ including advanced multistage front, driver and front-passenger side knee blocker, supplemental front-seat-mounted side, supplemental side-curtain
- Adjustable rear head restraints⁹
- Child Seat Anchor System (LATCH)
- Electronic Park Brake with Safe Hold
- Electronic Stability Control (ESC)⁵ with Traction Control
- Keyless Enter 'n Go™ (driver's door and trunk proximity entry) with push-button start
- Reactive front head restraints⁹
- Security alarm
- Sentry Key® anti-theft engine immobilizer
- Speed-sensitive power locks
- Tire pressure monitoring lamp
- Tire service kit

OPTIONAL EQUIPMENT

- Compact Spare Tire
- SiriusXM Satellite Radio⁸ with 1-Year Subscription
- Uconnect® 5.0 Multimedia Centre with 5-Inch Touchscreen Display

200 LIMITED



POWERTRAIN

- 2.4L Tigershark MultiAir I-4 with 9-speed automatic
- 3.6L Pentastar™ Variable Valve Timing (VVT) V6 with 9-speed automatic

ENHANCEMENTS vs. LX

- Compact spare tire
- Compass gauge
- Engine cover
- Exterior:
 - Body-colour power, heated mirrors
 - LED light pipe
 - Lower front grille with Chrome surround
 - Projector fog lamps
 - Rear fascia with Chrome accents
- Front and rear floor mats
- Leather-wrapped steering wheel
- Media Centre:
 - 6 speakers
 - Hands-free communication⁶ with Bluetooth® streaming audio
 - SiriusXM satellite radio⁸ with 1-year subscription
 - Uconnect 5.0 multimedia centre with 5-inch touchscreen display
- Power windows, 1-touch up and down
- Rearview mirror with microphone
- Seating:
 - 12-way power driver's seat including 4-way power lumbar adjust and 6-way power passenger seat
 - Heated front seats
 - Leather-faced seats
- Sun visors with illuminated vanity mirrors
- Wheels and Tires:
 - 17-inch Tech Silver aluminum wheels
 - 215/55R17 BSW all-season touring

OPTIONAL EQUIPMENT

- 18-Inch Satin Silver Aluminum Wheels
- Blind-Spot Monitoring with Rear Cross-Path Detection¹⁰
- Comfort Group
- Single-Pane Sunroof
- Uconnect 8.4 Multimedia Centre with 8.4-Inch Touchscreen (NAV-ready⁴)

200S



POWERTRAIN

- 2.4L Tigershark® MultiAir® I-4 with 9-speed automatic
- 3.6L Pentastar™ Variable Valve Timing (VVT) V6 with 9-speed automatic

ENHANCEMENTS vs. LIMITED

- 200S badge
- 730-amp maintenance-free battery with run-down protection
- Acoustic windshield and front-door glass
- Black and Chrome interior accents
- Black mesh lower grille
- Dual integrated exhaust tips
- Gloss Black grille surround
- Leather-wrapped steering wheel with paddle shifters
- Power, heated exterior mirrors; manual folding
- Rear fascia with Gloss Black accents
- Seating:
 - 12-way power driver's seat including 4-way power lumbar adjust and 6-way manual passenger seat
 - Sport cloth seats with leather bolsters
- Sport mode
- Sport suspension
- Wheels and Tires:
 - 18-inch Satin Carbon aluminum wheels
 - 235/45R18 BSW all-season

AWD ENHANCEMENTS

- 3.6L Pentastar VVT V6 engine
- AWD badge
- AWD sport suspension
- Engine oil cooler
- Heavy-duty 4-wheel antilock disc brakes

OPTIONAL EQUIPMENT

- 19-Inch Hyper Black Aluminum Wheels
- All-Wheel Drive (AWD)
- Blind-Spot Monitoring with Rear Cross-Path Detection¹⁰
- Comfort Group
- Leather-Faced Sport Seats with Heated and Ventilated Front Seats
- Premium Lighting Group
- Sun and Sound Group
- Uconnect 8.4 Multimedia Centre with 8.4-Inch Touchscreen (NAV-ready⁴)
- Uconnect 8.4 NAV Multimedia Centre with 8.4-Inch Touchscreen and GPS Navigation⁴

200S ALLOY EDITION



POWERTRAIN

- 2.4L Tigershark MultiAir I-4 with 9-speed automatic
- 3.6L Pentastar VVT V6 with 9-speed automatic

ENHANCEMENTS vs. 200S

- Dark Bronze badging
- Dark Bronze surround and grille
- Liquid Titanium Chrome wing badge
- Piano Black and Titanium interior accents
- Titanium exhaust tips
- Wheels and Tires:
 - 19-inch Dark Bronze aluminum wheels
 - 235/40R19XL BSW all-season

AWD ENHANCEMENTS

- 3.6L Pentastar VVT V6 engine
- AWD badge
- AWD sport suspension
- Engine oil cooler
- Heavy-duty 4-wheel antilock disc brakes

OPTIONAL EQUIPMENT

- AWD
- Blind-Spot Monitoring with Rear Cross-Path Detection¹⁰
- Comfort Group
- Leather-Faced Sport Seats with Heated and Ventilated Front Seats
- Premium Lighting Group
- Sun and Sound Group
- Uconnect 8.4 Multimedia Centre with 8.4-Inch Touchscreen (NAV-ready⁴)
- Uconnect 8.4 NAV Multimedia Centre with 8.4-Inch Touchscreen and GPS Navigation⁴

200C



POWERTRAIN

- 2.4L Tigershark MultiAir I-4 with 9-speed automatic
- 3.6L Pentastar VVT V6 with 9-speed automatic

ENHANCEMENTS vs. LIMITED

- 7-inch customizable in-cluster display centre
- 10 speakers including subwoofer and 506-watt amplifier
- 200C badge
- Acoustic windshield and front-door glass
- Auto-dimming rearview mirror with microphone
- Chrome-accented door handles
- Dual-zone automatic temperature control with humidity sensor
- Exterior mirrors with supplemental turn signals; manual folding
- Front and rear climate control outlets
- Heated steering wheel
- Keyless Enter 'n Go™ (2-door and trunk proximity entry) with push-button start
- Mesh lower grille
- ParkView® Rear Back-Up Camera¹⁰
- Remote start system
- Ride and handling suspension
- Seating:
 - 12-way power driver's seat including 4-way power lumbar adjust and 6-way power passenger seat
 - Leather-faced seats
- Uconnect 8.4 multimedia centre with 8.4-inch touchscreen (NAV-ready⁴)
- Universal garage door opener¹²
- Wheels and Tires:
 - 17-inch Satin Silver aluminum wheels
 - 215/55R17 BSW all-season

AWD ENHANCEMENTS

- 3.6L Pentastar VVT V6 engine
- AWD ride and handling suspension
- AWD badge
- Dual integrated exhaust tips
- Engine oil cooler
- Heavy-duty 4-wheel antilock disc brakes
- Sport mode
- Steering wheel-mounted paddle shifters
- Wheels and Tires:
 - 18-inch polished cast-aluminum wheels
 - 235/45R18 BSW all-season

OPTIONAL EQUIPMENT

- 18-Inch Polished Cast-Aluminum Wheels
- 19-Inch Polished Aluminum Wheels with Grey Painted Pockets
- AWD
- Dual-Pane Panoramic Sunroof
- Platinum Group
- Premium Lighting Group
- SafetyTec™ Group
- Uconnect 8.4 NAV Multimedia Centre with 8.4-Inch Touchscreen and GPS Navigation⁴

WHEELS



17-INCH WHEEL COVERS
STANDARD ON LX



17-INCH TECH SILVER
ALUMINUM
STANDARD ON LIMITED



18-INCH SATIN CARBON
ALUMINUM
STANDARD ON 200S
AND 200S AWD



19-INCH HYPER BLACK
ALUMINUM
AVAILABLE ON 200S
AND 200S AWD



19-INCH DARK BRONZE
ALUMINUM
STANDARD ON 200S
ALLOY EDITION



17-INCH SATIN SILVER
ALUMINUM
STANDARD ON 200C



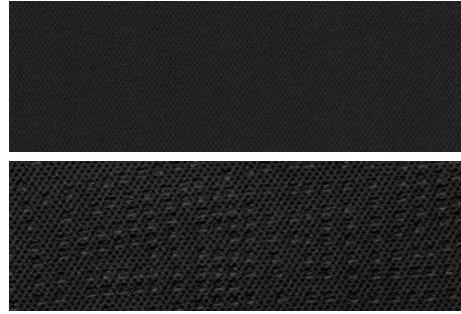
18-INCH POLISHED
MID-GLOSS ALUMINUM
AVAILABLE ON 200C
STANDARD ON 200C AWD



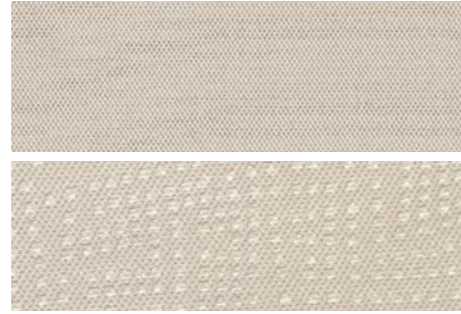
19-INCH POLISHED
ALUMINUM WITH GREY
PAINTED POCKETS
AVAILABLE ON
200C AND 200C AWD

INTERIOR COLOURS

200 LX

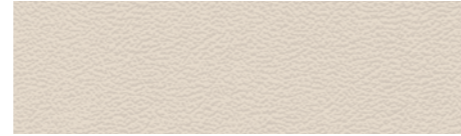


Premium cloth – Black



Premium cloth – Linen

200 LIMITED



Nappa leather-faced – Linen



Nappa leather-faced – Black

200S



Cloth/leather with mesh inserts and leather bolsters – Black
Standard on 200S and 200S AWD



Nappa leather-faced with perforated inserts – Black
Available on 200S and 200S AWD

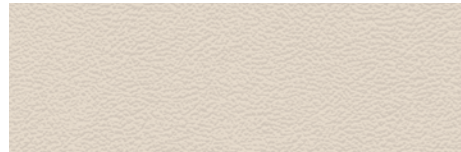


Cloth/leather with mesh inserts – Black with Caramel accent stitching
Standard on 200S Alloy Edition



Nappa leather-faced with perforated inserts – Black with Caramel accent stitching
Available on 200S Alloy Edition

200C



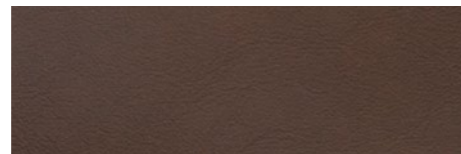
Nappa leather-faced – Linen
Standard on 200C and 200C AWD



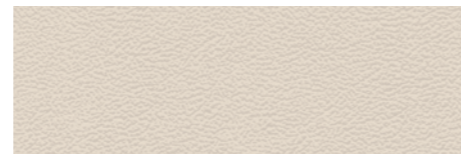
Nappa leather-faced – Black
Standard on 200C and 200C AWD



Nappa leather-faced with perforated inserts – Black with Bronze accents
Available on 200C and 200C AWD



Nappa leather-faced with perforated inserts – Mocha
Available on 200C and 200C AWD



Nappa leather-faced with perforated inserts – Linen with Bronze accents
Available on 200C and 200C AWD

EXTERIOR COLOURS



BILLET METALLIC



BRIGHT WHITE



GLOSS BLACK



GRANITE CRYSTAL METALLIC



VIVID BLUE PEARL



VELVET RED PEARL



MAXIMUM STEEL METALLIC

PACKAGE DETAILS

3.6L PENTASTAR™ VVT V6 ENGINE

- 3.25 final drive ratio
- Heavy-duty 4-wheel antilock disc brakes
- 730-amp maintenance-free battery
- Dual integrated exhaust tips
- Engine oil cooler
- Sport mode
- Steering wheel-mounted paddle shifters

COMFORT GROUP

- Auto-dimming rearview mirror with microphone
- Dual-zone automatic temperature control
- Front and rear climate control outlets and ducts
- Heated steering wheel
- Humidity sensor
- ParkView® Rear Back-Up Camera¹⁰
- Remote start system

LEATHER-FACED SPORT SEATS

- 6-way power passenger seat
- Heated front seats
- Ventilated front seats

PLATINUM GROUP

- 115-volt auxiliary power outlet
- Heated 2-tone leather-wrapped steering wheel
- Luxury door trim panel
- Memory features: radio, driver seat, exterior mirrors and HVAC settings
- Premium leather-faced seats with heated and ventilated front seats
- Real wood and Bronze Chrome interior accents

PREMIUM LIGHTING GROUP

- High Intensity Discharge (HID) headlamps
- LED fog lamps
- LED light pipe daytime running lamps (DRLs)

SAFETYTEC™ GROUP

- Adaptive Cruise Control with Stop and Go¹⁰
- Advanced Brake Assist
- Auto High-Beam Headlamp Control
- Blind-Spot Monitoring with Rear Cross-Path Detection¹⁰
- Forward Collision Warning with Active Braking¹⁰
- Lane Departure Warning with Lane Keep Assist¹⁰
- Parallel and Perpendicular Park Assist¹⁰
- Rain-sensing windshield wipers

SUN AND SOUND GROUP

- 9 amplified speakers with subwoofer
- 506-watt amplifier
- Dual-pane panoramic sunroof

MULTIMEDIA CENTRES

Radio 3.0	<ul style="list-style-type: none"> • AM/FM radio • Media hub including remote USB port and auxiliary audio input jack
Uconnect® 5.0	Radio 3.0 features plus: <ul style="list-style-type: none"> • 5-inch high-resolution full-colour touchscreen display • Hands-free communication⁶ with Bluetooth® streaming audio • Preset text reply and incoming voice text message reader⁷
Uconnect 8.4	Uconnect 5.0 features plus: <ul style="list-style-type: none"> • 8.4-inch full-colour high-resolution touchscreen display • Do Not Disturb feature to route incoming calls to voice mail and suppress texts or send automated replies • Drag and Drop menu bar • NAV-ready⁴ • Remote USB port • Siri® Eyes Free⁹ for iPhone® 4s and later • SiriusXM satellite radio⁸ with 1-year subscription including Tune Start, replay and alert settings for favourite songs, artists and sport teams
Uconnect 8.4 NAV	Uconnect 8.4 features plus: <ul style="list-style-type: none"> • Premium navigation⁴ with 1-step voice destination entry and 3D landmarks, city models and terrains

SPECIFICATIONS

Curb Weight, kg (lb)		
2.4L Tigershark® MultiAir® I-4 Engine	1575 (3473)	
3.6L Pentastar VVT V6 Engine	1643 (3623)	
GVWR	2092 (4612)	
Towing (when properly equipped), kg (lb)		
Towing Capacity, max	Not Rated	
Exterior, mm (in.)		
Wheelbase	2742 (108.0)	
Overall Height	1491 (58.7)	
Front Track	1578 (62.1)	
Rear Track	1576 (62.0)	
Overall Width with Side Mirrors	1871 (73.6)	
Overall Length	4885 (192.3)	
Ground Clearance (3.6L – lowest available)	147 (5.8)	
Interior, mm (in.)		
	Front	Rear
Headroom	983 (38.7)	950 (37.4)
Headroom with Single-Pane Sunroof	932 (36.7)	921 (36.3)
Headroom with Dual-Pane Sunroof	924 (36.4)	907 (35.7)
Legroom	1071 (42.2)	956 (37.6)
Hip Room	1384 (54.5)	1338 (52.7)
Shoulder Room	1485 (58.5)	1441 (56.7)
Volumes and Capacities		
Cargo, Rear Seat Up, L (cu ft)	453 (16)	
Seating Capacity	5	
Interior Volume Index, L (cu ft)	3324 (117.4)	
Total Passenger Volume, L (cu ft)	2871 (101.4)	
Fuel Tank Capacity, L (imp gal)	59.8 (13.2)	

POWER AND FUEL ECONOMY

Based on 2017 *EnerGuide* fuel consumption ratings. Government of Canada test methods used. Your actual fuel consumption will vary based on driving habits and other factors. For *EnerGuide* information, please ask your retailer or visit the Government of Canada Web site: www.vehicles.nrcan.gc.ca

Engine					
2.4L Tigershark MultiAir I-4		3.6L VVT V6 FWD		3.6L VVT V6 AWD	
Transmission					
9-speed automatic		9-speed automatic		9-speed automatic	
Horsepower					
184		295		295	
Torque (lb-ft)					
173		262		262	
L/100 km (mpg)					
City	Highway	City	Highway	City	Highway
10.2 (28)	6.6 (43)	12.4 (23)	7.6 (37)	12.8 (22)	8.3 (34)



ABOUT THIS CATALOGUE Since the time of printing, some of the information you'll find in this catalogue may have been updated. Ask your retailer for details. Some of the equipment shown or described throughout this catalogue is available at extra cost. Specifications, descriptions, illustrative materials and all competitive comparisons contained herein are as accurate as known at the time this publication was approved for printing. FCA Canada Inc. reserves the right to make changes at any time without notice and without incurring obligation. For the price of the model with the equipment you desire, or verification of specifications contained herein, see your Chrysler, Jeep, Dodge, Ram and SRT retailer. Chrysler, Dodge, Jeep, Ram, Mopar, Mopar Vehicle Protection, the Chrysler wing design, 200, SRT, Sentry Key, ParkView, Tigershark and Uconnect are registered trademarks, and Keyless Enter 'n Go, Pentastar and SafetyTec are trademarks of FCA US LLC. Alpine and the Alpine logo are registered trademarks of Alpine Electronics, Inc. Bluetooth is a registered trademark of Bluetooth SIG, Inc. MultiAir is a registered trademark of C.R.F. Società Consortile per Azioni, used under licence by FCA US LLC. Sirius, XM, the SiriusXM logo, channel names and logos are trademarks of SiriusXM Radio Inc. and are used under licence. Cummins is a registered trademark of Cummins, Inc. All other trademarks, images and logos are property of their respective owners and are displayed in this publication with permission. Facebook is a registered trademark of Facebook, Inc. iPhone and Siri are registered trademarks of Apple Inc. The Twitter name, logo, Twitter T, Tweet and Twitter bird are trademarks of Twitter, Inc. in the United States and other countries. ©2016 FCA Canada Inc. All Rights Reserved.

WARRANTIES 2017 Chrysler, Jeep, Dodge and Ram vehicles are backed by a 5-year or 100,000-kilometre fully transferable Powertrain Limited Warranty* with \$0 deductible plus 24-hour roadside assistance[†]. SRT vehicles are backed by a 3-year or 60,000-kilometre fully transferable Powertrain Limited Warranty* with \$0 deductible plus 24-hour roadside assistance. Basic Warranty coverage is for 3 years or 60,000 kilometres* Rust-through coverage on all body sheet metal is for 3 years. The Cummins Turbo Diesel engine is protected by a separate Limited Warranty, covering the engine for 5 years or 160,000 kilometres*. The EcoDiesel engine is backed by a 5-year or 100,000-kilometre fully transferable Powertrain Limited Warranty* with \$0 deductible plus 24-hour roadside assistance.

*Whichever comes first. Some conditions may apply. [†]The 5-Year/100,000-Kilometre Powertrain Limited Warranty does not apply to vehicles sold for certain commercial uses. See your retailer for full details.

MOPAR VEHICLE PROTECTION FCA Canada Inc. has a vested interest in your satisfaction and owner experience with your new vehicle. Mopar Vehicle Protection offers extended service and maintenance plans to help ensure you'll enjoy your vehicle for many years down the road — for just pennies a day. For more information on comprehensive vehicle coverage, see your local Chrysler, Jeep, Dodge and Ram retailer or call (800) 465-2001.

DISCLAIMERS (1) Based on *WardsAuto* Lower Middle sedan segmentation. (2) Based on IHSMarkit Automotive Canadian New Vehicle Total Registrations from CYE 2011 – 2015 and CYTD July 2016 for all Cars, Light Duty and Medium/Heavy Duty Trucks. (3) No system can repeal the laws of physics or overcome careless driving actions. Performance is limited by available traction, which snow, ice and other conditions can affect. When the warning lamp flashes, the driver needs to use less throttle and adapt speed and driving behaviour to prevailing road conditions. (4) Never program while driving. GPS mapping and available 3D navigation may not be detailed or available in all areas or reflect current road regulations. Additional fees will apply for Dealer Activated Navigation. (5) Siri Eyes Free requires an iPhone equipped with Siri. Certain features not available while the vehicle is in motion. iPhone must be within active cellular range. Customer's existing iPhone data rates apply to internet supported features. (6) Driving while distracted can result in loss of vehicle control. Only use mobile phones and other devices, even with voice commands, when it is safe to do so. Voice commands of phone require a Bluetooth-compatible phone. (7) Preset voice to text messaging and incoming text message reading requires a MAP-enabled phone. (8) Requires SiriusXM radio subscriptions governed by Sirius terms and conditions available at siriusxm.ca. (9) Always sit properly with the head restraint properly adjusted. Never place anything in front of the head restraint. (10) This is a driver convenience system, not a substitute for active driver involvement. The driver must remain aware of their surroundings and be prepared take corrective action to avoid collisions. (11) The Advanced Front Air Bags in this vehicle are certified to the federal regulations for Advanced Air Bags. Children 12 years old and younger should always ride buckled up in a rear seat. Infants in rear-facing child restraints should never ride in the front seat of a vehicle with a passenger front air bag. All occupants should always wear their lap and shoulder belts properly. (12) Not compatible with all garage door openers.



Like us on:
[facebook.com/
chryslercanada](https://facebook.com/chryslercanada)



Follow us on:
[twitter.com/
chryslercanada](https://twitter.com/chryslercanada)



Sign up for
updates at:
chrysler.ca

52017C581E

Chrysler is a registered trademark of FCA US LLC.