



The Power to Surprise

2017

SOUL EV **ECO** electric



soul ev

---

## AN ELECTRIFYING EXPERIENCE.

//////////

What's driving you? If it's a conventional petroleum-fuelled car, get ready to break the mould. And enter a new era, with a new set of fundamentals by going electric, in the all-electric Kia Soul EV. It allows you to not just look into the future – but drive it. And experience for yourself a new level of excitement, built on the knowledge that you're loving the ride, while consuming no fossil fuels and producing zero emissions. It's all made possible by a cutting-edge lithium-ion polymer battery that provides an impressive EPA-estimated range of 150 km on a full charge.<sup>1</sup> Tap the accelerator and tap into the near-silent thrust of the 109-hp electric motor that produces 210 lb.-ft. of instant torque. It's driving like you've never experienced before.

# TOTALLY PLUGGED IN.

Even though Soul EV answers such conventional needs as spaciousness, it also raises the comfort level thanks to electronic amenities. Cold weather will make you appreciate the heated steering wheel and heated front seats. But the centrepiece of your electronic theatre is the comprehensive infotainment system. It not only displays the battery's charge status, it also directs you to the next charging station, and lets you adjust the climate control and select your soundtrack. Inside Soul EV, the experience is as seamless as the electric power.



## FRONT AND REAR PARKING SONARS.<sup>2</sup>

An available sonar system in the front and rear bumpers gives audible and visual warnings if it detects certain objects close to your vehicle when you're parking.



## PUSH BUTTON START.

The unique position of the engine start/stop button at the front of the centre console next to the gear shift lever offers both convenience and a sporty touch.



## VOICE-COMMAND NAVIGATION.<sup>3</sup>

The convenient voice-command navigation system has a vivid 8-inch multimedia interface. Call-up a destination, find a point of interest, locate charge stations or type in an address on the touch screen and Soul EV will guide you there.



**REARVIEW CAMERA.<sup>2</sup>** When you shift into reverse, the standard multimedia interface automatically displays a high-resolution image from the vehicle's rearview camera. Like an extra set of eyes, it shows you what you might not otherwise see in the rearview mirror or by looking over your shoulder.

# COMFORT FOR ALL.



## HEATED AND AIR-COOLED SEATS.

Standard heated front seats help ensure comfortable driving in cold weather. Enjoy optimal comfort in warm weather with available air-cooled front seats that circulate cool air through perforations in the seat.



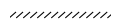
## INDIVIDUAL VENTILATION.

To reduce the air-conditioning energy drain, Soul EV allows you to select driver-only ventilation to completely shut off the airflow to the passenger-side vents when you're driving alone.



## CARGO UNDER STORAGE COMPARTMENT.

A partitioned tray under the luggage floor lets you stow valuables and charging cables.





## POWER UP.

It's the all-electric car that's pure fun to drive. That's thanks to Soul EV's 27-kWh, 360-volt lithium-ion polymer battery that's designed for high-energy capacity and thermal stability. Its flat design and location beneath the floor means there's minimal battery intrusion into the cabin. This helps Soul EV provide plenty of interior space, while also contributing to its low centre of gravity and agile handling. The battery was engineered with state-of-the-art materials to increase durability while also reducing weight and increasing energy density. Light, responsive and nimble – for positively electric performance.



### THREE WAYS TO CHARGE AND GO.

Two charging ports are located behind a sliding door in the front grille. The first port is for 120V charging – or 240V charging that develops a full charge in approximately five hours.<sup>8</sup> The second is a DC Fast Charge port, designed for 480V charging, which can achieve an 80 percent charge from empty in 33 minutes.



### CENTRE CLUSTER.

Access important vehicle information such as range and charge status at a glance, or quickly locate the nearest charging station with the informative centre display monitor.



### REGENERATIVE BRAKING.

To help maximize Soul EV's driving range, a third-generation regenerative braking system captures a portion of the vehicle's kinetic energy. As you brake or coast, kinetic energy is captured and fed back into the battery.

## EXTERIOR COLOURS

**REFRESH YOUR COLOUR SCHEME.** The Kia Soul EV embodies a special link between nature and urban life, coexisting in peace. Its available two-tone exterior treatments combine colours and vibrant hues that celebrate nature and the best of technology.

Onyx Black / Inferno Red Two-Tone

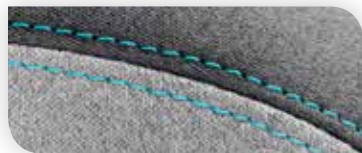
Titanium (M)<sup>9</sup>

Pearl White / Sky Blue Two-Tone (P)

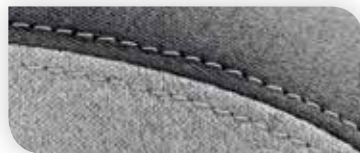
Electronic Blue / Polar White Two-Tone (P)



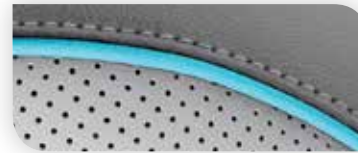
## INTERIOR COLOURS



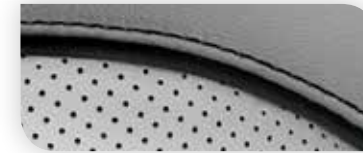
Two-Tone Grey Cloth with Sky Blue stitching (EV)



Two-Tone Grey Cloth with Grey stitching (Onyx Black / Inferno Red EV only)



Grey Leather (synthetic) with Sky Blue Accents (EV Luxury)



Grey Leather (synthetic) with Black Accents (Onyx Black / Inferno Red EV Luxury only)

M = Metallic, P = Pearl.

The exterior and interior colours in this brochure are as close to the actual vehicle production colours as the printing process allows.

# FEATURES

Exterior	EV	EV Luxury
16" two-tone alloy wheels	●	●
P205/60R16 super low-rolling resistance tires	●	●
Tire mobility kit	●	●
Panoramic sunroof <sup>9</sup>	–	○
Signature Kia grille with integrated charge port(s)	●	●
Projection headlights	●	●
Automatic headlights	●	●
LED positioning lights	●	●
LED light bar taillights	●	●
Fog lights	–	●
Two-tone / body-coloured sideview mirrors	●	●
Power heated sideview mirrors	●	●
Sideview mirror signal repeaters	●	●
Automatic folding sideview mirrors	–	●
Body-coloured door handles	●	●
Aeroblade wipers	–	●
Rear wiper	●	●
<b>Safety</b>		
Dual advanced front airbags	●	●
Dual front seat-mounted side airbags	●	●
Dual side curtain airbags	●	●
Virtual engine sound device	●	●
4-wheel disc brakes	●	●
4-wheel anti-lock braking system (ABS)	●	●
Electronic parking brake	●	●
Panic brake assist system (BAS)	●	●
Electronic stability control (ESC)	●	●
Vehicle stability management (VSM) <sup>2</sup>	●	●
Hill assist control (HAC)	●	●
Electric power steering (EPS)	●	●
Front seatbelt pretensioners	●	●
Side-impact door beams	●	●
Impact-sensing door unlock	●	●
Tire pressure monitoring system (TPMS)	●	●
2 <sup>nd</sup> row lower anchors and top tethers for children (LATCH)	●	●
Child-safety rear door locks	●	●
Obstacle-detecting driver window	●	●
Front and rear parking sonars <sup>2</sup>	–	●
Rearview camera <sup>2</sup>	●	●

● = Standard ○ = Available – = Not Available

Comfort & Convenience	EV	EV Luxury
Air conditioning	●	●
Automatic climate control with Clean Air™ Ionizer	●	●
Heat pump (EV range enhancing climate control)	–	●
Rear climate ventilation	●	●
Cabin air filter	●	●
6-speaker AM/FM/MP3/SiriusXM satellite <sup>5</sup> stereo	●	●
8" multimedia interface with voice-activated navigation <sup>3</sup>	●	●
Bluetooth® hands-free cell phone connectivity <sup>6</sup>	●	●
AUX & USB inputs	●	●
Steering wheel audio controls with voice command function	●	●
Organic LED Supervision instrument cluster	●	●
Power windows	●	●
Power door locks	●	●
Keyless entry	●	●
Smart Key with push button start	●	●
Auto-dimming rearview mirror	–	●
Tilt and telescopic steering wheel	●	●
Heated steering wheel	●	●
FlexSteer™ driver selectable steering assist	●	●
Cruise control	●	●
Washer fluid warning lamp	●	●
Escort lights	●	●
Trip computer	●	●
Exterior temperature display	●	●
Cargo privacy cover	–	●
Cargo net	–	●
Charge status indicator	●	●
Dual 12V power outlets	●	●
12V cargo area power outlet	–	●

## Seating & Trim

Bio-fabric cloth seats	●	–
Leather seats (synthetic)	–	●
Dual-stage heated front seats	●	–
Triple-stage heated front seats	–	●
Air-cooled front seats	–	●
Heated rear seats	–	●
60:40 split-folding rear seat	●	●
Front centre armrest	●	●
Rear seat centre armrest with cup holder	–	●
Height adjustable driver's seat	●	●
Leather-wrapped steering wheel	●	●
Leather-wrapped gear shift knob	●	●
Leatherette instrument cluster trim	–	●
Soft touch interior accents	●	●
White high-gloss interior trim	●	●
Leatherette centre door trim	–	●
Satin chrome interior door handles	●	●

# SPECIFICATIONS

## Motor

Type	Permanent Magnet AC Synchronous Motor
Horsepower	109 hp (2,730 - 8,000 rpm)
Torque	210 lb.-ft. (0 - 2,730 rpm)
Voltage	360V
Transmission	Single-gear reduction unit, ECO and regeneration drive modes
Max Speed	145 km/h
Battery	27 kWh lithium ion polymer; On-board battery heater; Over-charge protection device
Charger	On-board 6.6 kW; Portable trickle-charge cable 110-120V
Charge Ports	120 - 240V; 480V fast charge port

## Dimensions, mm (in.)

Wheelbase	2,570 (101.2)
Length	4,140 (163.0)
Width	1,800 (70.9)
Height	1,600 (63.0)
Head room - (front/rear)	1,006/1,003 (39.6/39.5)
Head room with sunroof (front/rear)	962/963 (37.8/37.9)
Shoulder room - (front/rear)	1,410/1,390 (55.5/54.7)
Leg room - (front/rear)	1,040/914 (40.9/35.9)
Hip room - (front/rear)	1,352/1,252 (53.2/49.3)

## Curb Weight, kg (lb.)

Minimum-Maximum	1,492 - 1,515 (3,289-3,340)
-----------------	-----------------------------

## Body & Chassis

Layout	Front motor, front wheel drive
Body type	Steel unibody
Front suspension	MacPherson strut with gas shock absorber
Rear suspension	Coupled torsion beam axle with gas shock absorber
Steering	Electric motor power assist

## Brakes

Type	4-wheel disc
ABS	4 sensor, 4 channel
Front, mm (in.)	299.7 (11.8) vented discs
Rear, mm (in.)	284.5 (11.2) solid discs

## Capacities, L (cu. ft.)

Passenger volume	2,749 (97)
Cargo capacity, rear seats folded	1,402 (49.5)
Cargo capacity, rear seats up	532 (18.8)

## Energy Consumption, City/Highway

Driving range <sup>1</sup>	150 km
L <sub>e</sub> /100km (litres equivalent)	2.0/2.6

1. Based on EPA estimates. Actual range and mileage will vary with options, driving conditions, driving habits, and your vehicle's condition. 2. Please note that your vehicle may not be equipped with all features described. This also applies to safety-related systems and functions. None of the features we describe are intended to replace the driver's responsibility to exercise due care while driving and are not a substitute for safe driving practices. Some features may have technological limitations. For additional information regarding the various features, including their limitations and restrictions, please refer to your vehicle's Owner's Manual. 3. When equipped with the navigation system, French voice commands may be limited. 4. The Soul EV Luxury is 9% due to synthetic leather. 5. Service available in the 10 provinces and three territories of Canada, and the 48 contiguous states of the U.S. Monthly subscription sold separately after three trial months. 6. The Bluetooth® word mark and logos are registered trademarks owned by Bluetooth SIG, Inc. A compatible Bluetooth wireless technology-enabled cell phone is required to use Bluetooth hands-free wireless technology. 7. The Kia 5-year/100,000-km warranty includes various warranties and roadside assistance. Some restrictions apply. For more information call us at 1-877-542-2886 or visit to kia.ca. 8. Charge time of approximately 5 hours achieved with 240V 30 Amp. charger. 9. Titanium exterior and panoramic sunroof available together only. Limited availability.

V 001



ECO dynamics

## SUSTAINABILITY REDEFINED.



Realization of  
human love

Sustainable  
society

Corporate social  
responsibility

When Kia Motors launched Eco Dynamics in 2009, it represented a firm commitment to the pursuit of zero emissions driving – and it has come to symbolize Kia's contribution to a sustainable environment around the globe.

There isn't one single path or form of technology that alone can attain that complex goal. That's why Kia has developed a series of different vehicle technologies that not only perform an important service in the area of sustainability, but also deliver on the key performance expectations of its drivers.

The first vehicles in Canada to incorporate the Eco Dynamics philosophy and technologies were the Optima Hybrid and the all-electric Soul EV.

Both of these vehicles are valuable pieces of the puzzle – moving ever closer to the model of sustainable transportation.

The Eco Dynamic initiative extends beyond the technology on board Kia's eco-friendly vehicles. It incorporates a range of efforts aimed at cutting consumption and waste across the entire automotive life cycle through innovative design, production, distribution and disposal strategies.

In this way, Kia is embracing its mission: To shape our future sustainability.

# Get the points.



Kia Member Rewards is an exclusive rewards program for Kia customers.

As a Kia Rewards Member, you'll earn points with every dollar you spend on maintenance service, parts and accessories at your servicing Kia dealer. Those Reward Points can be redeemed for discounts on future purchases – including the purchase of a new Kia. Plus earn Bonus Points on select items and services to collect rewards even faster.

Kia Member Rewards No-Charge Benefits include:

- Fuel fill-up with the delivery of your new Kia vehicle
- Local shuttle service
- Multi-point vehicle inspection with every service visit
- Windshield washer fill-up with every paid service
- Windshield wiper installation with wiper purchase
- Preferential rates on car rentals, nationwide
- 24/7 Roadside Assistance for your vehicle under Kia's 5-year/100,000 km warranty or Certified Pre-Owned warranty
- Email notification of exclusive Kia specials and events – a great way to earn Reward Points and save on future purchases

**Become a Kia Premium Rewards Member:** Ask your Kia Dealer how you can enjoy even more benefits.

**Enroll Today:** Becoming a Kia Rewards Member is easy.

See your Kia Dealer today to join.

Visit [rewards.kia.ca](http://rewards.kia.ca) for full terms and conditions.

**5**  
**YEAR**  
**100,000 KM**  
**WARRANTY**

# We've got you covered.

At Kia, we believe peace of mind should come standard with every vehicle we make. That's why we back every model with one of the best warranties in the industry.

**Our outstanding warranty coverage includes:**

5-year/100,000 km – Worry-free comprehensive warranty covering virtually the entire vehicle<sup>7</sup>

5-year/100,000 km – Powertrain warranty covering the engine, transmission, axles, differentials and driveshafts<sup>7</sup>

5-year/100,000 km – Roadside assistance covers you in case of mechanical breakdown anywhere in North America<sup>7</sup>

5-year/unlimited km – Anti-perforation warranty on body sheet metal defects in material/workmanship<sup>7</sup>

## EV SYSTEM WARRANTY

Kia Canada Inc. EV System Warranty covers the described components up to a total of 96 months from the warranty registration date, or 160,000 KM, whichever occurs first.<sup>7</sup>

### What is Covered

The following original EV system components which are found to be defective in material and/or workmanship under normal use and maintenance will be covered during the "EV System Warranty Period" described above.<sup>7</sup>

- Motor
- Inverter unit
- VCM
- Reduction gear
- DC/DC converter
- Onboard charger
- Onboard charger connector
- Trickle charge cable
- In Cable Control Box
- High Voltage Battery

## HIGH VOLTAGE BATTERY CAPACITY COVERAGE

Any repair or replacement made under this Lithium-Ion Polymer Battery Capacity Coverage may not return your Lithium-Ion Battery to an "as new" condition with the original 100% battery capacity. However, it will provide the vehicle with an EV Battery capacity of at least 70% of the original battery capacity. See dealer for details.<sup>7</sup>

**For more information** visit [kia.ca](http://kia.ca) or call 1-877-542-2886