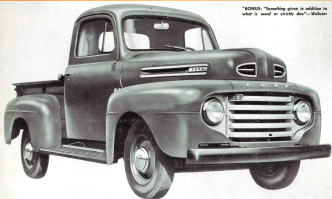


# Series F-1

MAX. G.V.W.  
4,700 lbs.



*Bonus  
Built*



*"BONUS: 'Something gives us addition to what is used as strictly due'... Wheeler*

## MASTER OF 1001 LIGHT DELIVERY JOBS!

**For a Light Duty truck with the big truck features you've always wanted, choose Bonus Built Ford Series F-1**

**IN FORD SERIES F-1 YOU GET** Ford's lowest-priced truck today.

The low first-cost is matched by good gas and oil economy. Maintenance costs are low, in the Ford tradition, and service facilities are everywhere.

What's more, the F-1 gives excellent performance. Whichever engine you choose, either the 100-h.p. Ford V-8 or the 95-h.p. Ford Six, you get adequate power and speed. With full rated load the standard F-1 will pull up to a 9% concrete grade in high gear. Top speed is as much

as you'll ever want, and at 35 m.p.h., the engine is turning over a lazy, gas-saving, life-prolonging 1,600 r.p.m.

The Ford F-1 is loaded with engineering advancements. Million Dollar Cab with insulated Level Action suspension. Hypoid rear axle. Removable brake drums. Feather-Foot brakes. Airplane-type shock absorbers, front and rear. And it's Bonus Built! Ford Series F-1 is built extra strong to last longer!

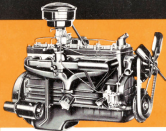
6½-ft. Pickup; 8-ft. Panel; 6½-ft. Platform or Stake Bodies available.

USING LATEST REGISTRATION DATA ON 6,104,000 TRUCKS, LIFE INSURANCE EXPERTS, WOLFE, CORCORAN AND LINDSEY OF NEW YORK CITY, PROVE FORD TRUCKS LAST LONGER!

**FORD Division of FORD MOTOR COMPANY**

**BUILT STRONGER TO LAST LONGER**

# YOUR CHOICE OF 2 GREAT FORD BONUS BUILT TRUCK ENGINES

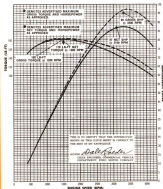


## ROUGE 226 TRUCK SIX

### CERTIFIED ENGINE POWER CURVES

Name and Model—Ford 226T, No. of Cyls.—6, Bore—3 1/2", Stroke—4.4", Displacement—226, Compression Ratio—6.8 to 1, Type of Carburetor—Down Draft, Fuel—M5048, Octane No. 70-74, Crankshaft to 25.92" Hg. @ 60° F.

- — — Gross Output—Base Engine Without Fan
- — — Net Output—Engines with Generator, F8T-4480 Air Cleaner, 30T-6020-C (17") Fan and 79C-4284-C Muffler with 4 B. Tailpipe (as installed).

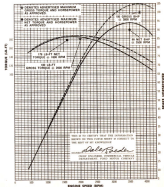


## ROUGE 239 TRUCK V-8

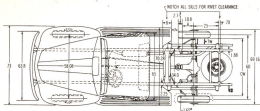
### CERTIFIED ENGINE POWER CURVES

Name and Model—Ford 239T, No. of Cyls.—8, Bore—3 1/2", Stroke—3 1/2", Displacement—328, Compression Ratio—6.8 to 1, Type of Carburetor—Down Draft, Fuel—M5048, Octane No. 70-74, Crankshaft to 29.87" Hg. @ 60° F. and 20" Hg. Water Vapor.

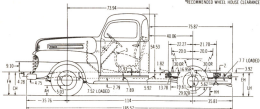
- — — Gross Output—Base Engine Without Fan
- — — Net Output—Engines with Generator, F8T-4620-C Air Cleaner, 31T-6200-A (14") Blade Fan and 88T-4280-C Muffler with 4 B. Tailpipe (as installed).



## SERIES F-1 CHASSIS WITH CAB



\*RECOMMENDED WHEEL HOUSING CLEARANCE



All dimensions given in inches (unless marked) and all weights are in pounds.

### FRONT VARIABLE DIMENSIONS

Front Tire Size	WIDTH		HEIGHT		
	Rin	Wheel Offset	FH Frame Height Light	CH Frame Height Loaded	AH Aisle Clearance
6.00-16 4-p.c.	4 1/2 K	0.62	21.08	20.93	8.37
6.00-16 6-p.c.	4 1/2 K	0.62	21.08	20.93	8.37
6.50-16 6-p.c.	4 1/2 K	0.62	21.18	21.03	8.47

P.c. denotes "ply rating." Front Spring Centers—29.0.

### CHASSIS WITH CAB WEIGHTS

Size	Curb Weight with Tire Chassis Letter - Front, Rear and Spare		
	Front	Rear	Total
6.00-16 4-p.c.	1800	975	2875
6.00-16 6-p.c.	1807	986	2870
6.50-16 6-p.c.	1800	990	2890

Curb weights in weights of empty vehicle ready to drive with fuel tank, cooling system and mechanical fluid, tools, spare wheel, spare tire and all other equipment specified on standard. For dry weight—without fuel and water—deduct 100 lbs. from "total" weight.

### REAR VARIABLE DIMENSIONS

Rear Tire Size	WIDTH				HEIGHT				
	Rin	Tire Section Dia.	CW Wheel Offset	TW Distance Between Rear Tires	Static Loaded Tire Radius	RH	LH	RH Aisle Clearance	
6.00-16 4-p.c.	4 1/2 K	6.4	0.62	52.6	5.68	12.4	24.89	21.1	7.78
6.00-16 6-p.c.	4 1/2 K	6.4	0.62	52.6	5.68	12.4	24.89	21.1	7.78
6.50-16 6-p.c.	4 1/2 K	6.70	0.62	52.24	5.5	12.5	24.79	21.2	7.88

P.c. denotes "ply rating." Rear Spring Centers—40 1/2.

Recommended Body Length (inches)	
Front (Feet)	Rear (Feet)
6 1/2	5 1/2-6 1/2

# SERIES F-1 CHASSIS SPECIFICATIONS

MAXIMUM GROSS VEHICLE WEIGHT 8,700 POUNDS

## AXLE FRONT

Capacity—lbs.....	2500
Type.....	Revenue Hilborn Modified I Beam
Material.....	Steel-treated Alloy Steel Forging
Size (Height x Width x Width)—in.....	2.29 x 1.8 x 0.23
Thrust Bearings.....	Tapered Roller or Anti-Friction Ball
Wheel Bearings.....	High Capacity, Shielded Ball or Adjustable Tapered Roller
Tie Rod.....	Ball Stud and Socket, Spacing Lead-in for Acoustic
	Tie-up of Water/Equipped with Hubster Dust-Shield

## AXLE REAR

Capacity—lbs.....	3000	
Type.....	Hypoid—Steel-Flaring	
Bearing.....	Integral—Tubus Press-in and Welded to Carrier Casting	
Pinion—Material.....	Driver End Type.....	Combining—10-Notches
Differential.....	30-Pinion	
Ride and Pivots Gear Thrust Washers.....	Lubricated Steel	
Pinion and Differential Bearings.....	Tapered Roller	
Axle Shaft Material.....	Forged, Special Manganese Steel	
Wheel Diameter at Spindle.....	3.25	
Axle Bearings.....	Shielded Ball	
Lubrication Capacity—pint.....	2	
Axle Ratio—Standard.....	3.58 to 1	
Optional.....	4.27 to 1	

## BRAKE, SERVICE

Type.....	Hydraulic, Two-Shoe, Single Anchor, Self-Energizing
Mount Brakes (Drum Drum, x Lining Width—Thickness)—in.....	11 x 3 1/2 x 1 1/2
Rear Brakes (Drum Drum, x Lining Width—Thickness)—in.....	11 x 1 1/2 x 1 1/2
Total Drum Area—sq. in.....	119
Total Lining Area—sq. in.....	119
Drum Type.....	Disposable
Material.....	Campanile—Cast Iron Fused to Steel Back

## BRAKE, HAND

Cable with Equalizer applying Rear Wheel Brake

## SUMPER

Type.....	Curved, Truck-Type Channel
Mounting.....	Bolts Direct to Front of Frame Side Rails

## CLICHÉ

Type.....	Cylinder, Steel Cast-Iron Single Plate
Diameter, Outside—in.....	30
Total Frictional Area—sq. in.....	30.5
Control Flange.....	Vannillated Type
Pressure Flange.....	Cast Iron
Clutch Disk.....	Combined Hubs with Vibration Damper
Belts and Bearings.....	Roller Ball, Pre-lubricated
Plate Bearing.....	Cast-Iron Cast-Iron
Attachment—Lenses to Pressure Flange.....	Needle Roller Bearings
Clutch Plate Pressure, lbs., at Zero Speed—at 2000 RPM.....	1800—1800
Plate Pressure, lbs., at Zero Speed—at 3000 RPM.....	31—45

## COUPLING SYSTEM

Capacity—sq. in.....	35
V.S.....	35
Reducer.....	Flat Tube and Pin—Pressure Cup
Thrust—lb.....	18 Single Row Sockets
V.S. Diameter—in. (in.....)	17—4-Rails
V.S.....	18 1/2—4-Rails

## DRIVE SHAFT

Type.....	Ball-Joint, Straight-Line Drive
Propeller Shaft—Number.....	One, Tubular, Forged Steel Tube
Universal Joints—Number, Type.....	Two, Needle Roller Bearing

## ELECTRICAL SYSTEM

Battery.....	8-Volt, 15-Plate, 30-Amp. Hr. Capacity
Generator.....	35 Amp., 250 Watts, 4F Coil, Shunt Wound, External Voltage and Current Regulation
Ignition.....	Landscape Vacuum Controlled System Fully Automatic
Headlights.....	Distraction Shield-Cut Cut, Open Working or Hubster Elements
Star Lights.....	Sealed Beams, Four-Stroke Beam Control
Brake Lights.....	High Tension, Automatically Engaged, Self-Adjusting
Parking Light.....	Left and Right Combination Stop and Tail Light, Instrument Light, Ignition Switch with Key Lock, Chassis Fuses; Voltage Regulator.

## ENGINE

No. Cylinders—Bore and Stroke, in.....	6—3 1/2 x 4.4	7—3 1/2 x 3 1/4
Displacement—cu. in.....	220	220
Variable HP Rating (N.A.A.C.).....	26.1	32.5
Max. Brake Horsepower.....	100 @ 1200	100 @ 1200
Max. Torque—Lb.-Ft.—RPM.....	100 @ 1200	100 @ 1200
Compression Ratio.....	6.8 to 1	6.8 to 1

## FRAME

Side Rail—Type.....	Tapered Channel Section
Max. Service (Depth x Flange x Thick)—in.....	5.92 x 2.25 x 0.35
Over Members.....	4-Flanged "I" Type and Channel Section
Side Rail—Material.....	Steel

## FUEL SYSTEM

Carburetor.....	Heavy Duty Oil Bath, One-Up, Drainshaft
Air Cleaner.....	Heavy Duty Oil Bath, One-Up, Capacity
Fuel Pump and Filter.....	Diaphragm Type, Drains from Chassis
Fuel Tank—Capacity without Galb.....	17-Gal. Inside Left Frame Rail
Chassis with Galb.....	20-Gal. Back of Body
Fuel Filter.....	Tube Extension to Outside Cab or Body

## LUBRICATION

Region.....	Full Pressure Fuel to All Main, Drains and Chassis Bearings
Oil Filter.....	Replaceable Cartridge Type
Oil Pan.....	Close-out Plate in Bottom of Pan
Crackdown Capacity.....	6 cu. in.; 2 pts. (incl.)
Chassis.....	Fittings for Pressure Lubrication

## SHOCK ABSORBERS

Front and Rear..... Direct, Double Acting, Permanently Sealed, Telescopic

SPRINGS—Steel Elliptic, Ford Alloy Steel.....	Front.....	Rear.....
Number x Width.....	30 x 10	45 x 8
Length of Leaves and Dist. Rate, lbs. per in.....	9—233	10—273*
Capacity at Normal Deflection—Per Spring.....	800	1050*
*Road Only—9 Leaves, Rate 230 lbs. per in., Capacity 1600 lbs.		

## SPINDLES

Type.....	Warm and Single Row Needle Bearing Roller
Wheel.....	30 x 10, 3-Spoke
Yard.....	16 in. Dia., 3-Spoke
Turning Radius—R.....	21 (right), 21 1/2 (left)

## TRANSMISSION

Type.....	3-Speed, 22-Tooth, Synchronizers 2nd and 3rd			
Lubrication Capacity—pint.....	24			
Gear Positions.....	First.....	Second.....	High.....	Reverse.....
Ratio to 1.....	2.625	1.804	1.00	3.625

## WHEELS AND TIRES

Wheels.....	5—16-inch Steel Disc with 6.00-inch Offset
Rims—Size and Type.....	6-Rails, 5.00-inch Dia. Bolt Circle
Tires—Standard Size—Front, Rear and Spare.....	6.00-16 4-ply rating

CHASSIS EQUIPMENT, included as standard, in addition to items specified above:

Head, Cool and Dash Assembly.....	Charge Indicator	Spare Wheel and Tire
Front Fenders.....	Anti-Rattle	Spare Tire Carrier under
Convex Cool Ventilator.....	Diaphragm Fan	Front and Rear Lenses
Steel Top Boards.....	Choke, Start-in	Headlights (15 1/2 in. Capacity)
Treatment Panel.....	Light Switch	Standard Tools in tool bag, including allen, screw driver, tire iron, spark plug, and cylinder head lock wrench, wheel stud nut wrench, jack handle.
Speedometer with Mileometer.....	Truck Type Ammeter	
Water Temperature Gage.....	Brake Hub Cap	
Oil Pressure Gage.....	Front and Rear	
Fuel Gage.....	Left-hand Windshield Wiper (except coil)	
	Single Electric Horn	

NOTE: Raining boards are not attached on chassis with coil or windshield.

## OPTIONAL EQUIPMENT

4.27 to 1 Axle Ratio.....	4-Speed Transmission with 11" Clutch	Beater and Deflector—Decorative Type
Time, Front, Rear and Spare.....	Spring Hubster Pad	Front Air Intake Type
6.00-16 4-ply rating.....	10 Full Size (Galb)	Heavy Duty Headlamp
6.50-16 4-ply rating.....	Swivel Driver's Seat (Galb)	Heavy Duty Fan
11" Clutch with 4.27-Speed Transmission.....	Amplifier Seat (Panel)	High Back Tail
8.11-Speed Transmission with 11" Clutch.....		Light
		High-Back Windshield (Strip)

\*No extra required by law only. †Hazard discontinued.

## FINISH AND COLOR COMBINATIONS FOR ALL MODELS

- Chassis-Final and Chassis-Windshield (except items stated by Chassis Galb.)**  
 Body..... Black, Platinum  
 Fenders, Hoppers, Running Boards, Rear View Mirror, Vinyl Window Frame, Gas Tank, Fuel Tank and Cap, Fuel Tank..... Black  
 14-16 Hoppers and Grille Bars..... M1720 Aluminum  
 Hub Caps, Steel Mudflaps, Windshield Wiper (except vinyl), Door Mudflaps, Head and Parking Lamp Housings, Spare and Identification Plates..... Bright Finish  
 Wheels, Fenders, Head, Cool, Fuel and Fuel (including interior metal surfaces before painting)..... Body Color\*
- Final Only—Items listed as above except:**  
 Tail Lamps Doors and Filter Cap..... Bright Finish  
 Running Boards, Gas Tank Fuel Tank and Rear Parking Lamp, Body Color

## Body Color Options for Above Models—Items (1) and (2)

M1722	Vermilion	M1490	Meadow Green
M1724	Medium Luster Black	M1430	Black Gray
		M1400	Chamois Yellow

\*Cold and Cool Windshield models are finished in primer coat only unless body color.

THE FORD MOTOR COMPANY, WINDSOR, CANADA IS ONE OF SEVERAL MANUFACTURERS WHOSE RIGHT TO CHANGE AT ANY TIME, SPECIFICATIONS, DESIGN OR PRICE WITHOUT INQUIRING DEL.