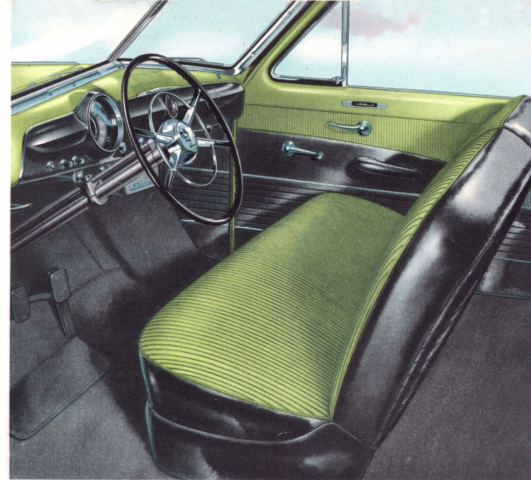
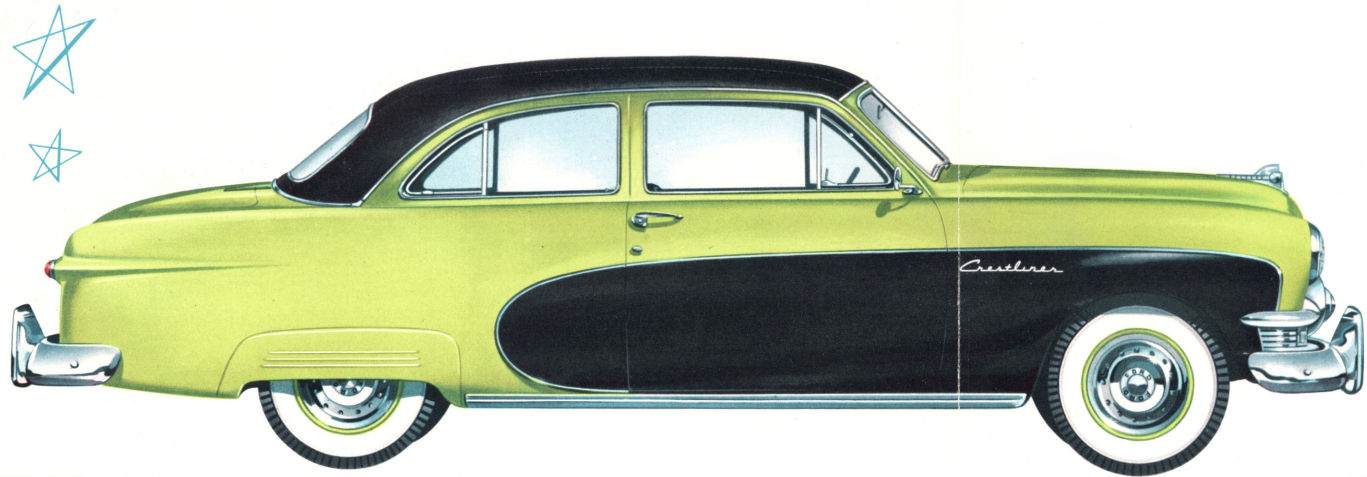




*Ford Announces the*  
*NEWEST, BRIGHTEST*  
*STAR OF THE HIGHWAYS!*

**ADVANCE  
INFORMATION**

# *The new FORD Crestliner!*



**Y**ou can put this down as another big Ford scoop—another Ford first! For surely, by long odds, this exciting new Crestliner will be voted the smartest, most distinctive car of the year. Get an eyeful of its style and beauty . . . that novel, long-wearing basket-weave vinyl top . . . the unique, two-tone body color treatment with side air foil in contrasting color, encircled by stainless steel speed line molding. But you can't possibly take in all of its appealing new features at a glance. Full details of the smart Crestliner's exterior charm and distinctively appointed interior are presented on the following pages. Read every word and you'll be "sold" right up to the hilt that here's the *newest, brightest star of the highways!*

# Highlights of the new FORD *Crestliner!*

Compare these features with the best that competition offers. Remember, the Crestliner has the famous Ford Tudor "Lifeguard" Body. This handsome new model with its basket-weave vinyl top meets every need and wish of folks who go for smart sports cars. Note in the details below that while the Crestliner has much of

the same exquisite Ford Custom Deluxe equipment as the Convertible, numerous novel touches have been added to give it a distinct individuality. Rear fender shields, four chrome full-wheel covers, and two beltline rear view mirrors are standard and are included in the price which is bound to appeal to today's public.

## EXTERIOR

Choice of two combination two-tone colorings: Rich Sportsman's Green (see illustration) with black basket-weave vinyl top and black air foil; or Coronation Red Metallic with black air foil and with black basket-weave vinyl top to match.

Stainless steel speed line moldings encircle and accent the air foil treatment.

Chrome rocker panel molding.

"Crestliner" insignia on front fenders at sides.

Durable basket-weave vinyl decking material mounted over standard Ford Tudor all-steel top with chrome finish molding around.

Rear view mirrors at both right and left.

Rear fender shields.

Four specially designed chrome full wheel covers.

(White sidewall tires, "Magic Air" heater and radio are optional at extra cost.)

## INTERIOR

Seat backs and cushions are covered with rich, long-wearing Bedford Cord material in neat pin striped pattern to match the car's exterior color. The sides and the top facing of seat backs are trimmed with black deep-buffed leather; the back of the front seat is black vinyl to contrast with the car's exterior. Special headlining is in rich black artificial leather.

Restyled door, quarter and cowl side panels.  
(See illustration.)

Matching full front and rear carpeting.

Convertible-type sun visors and brackets.

New assist straps.

Special accelerator foot rest.

Two-tone finished instrument panel has chrome molding and "Crestliner" nameplate on radio grille.

Special ultramodern deluxe steering wheel and steering column finished in ebony black.

Other trim details include chrome windshield finish strips, chrome door lock control knobs, garnish moldings and quarter ash trays painted to harmonize with interiors.

The specifications contained herein were in effect at the time this folder was approved for printing. The Ford Division of the Ford Motor Company, whose policy is one of continuous improvement, reserves the right, however, to discontinue models at any time, or change specifications, design, or prices without notice and without incurring obligation.

**FORD** Division of FORD MOTOR COMPANY