



World line presents... The Value Parade of 1977

Buick LeSabre Sport Coupe

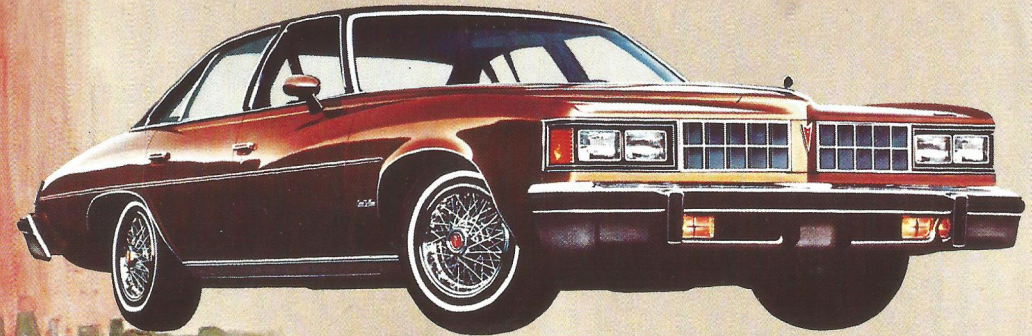




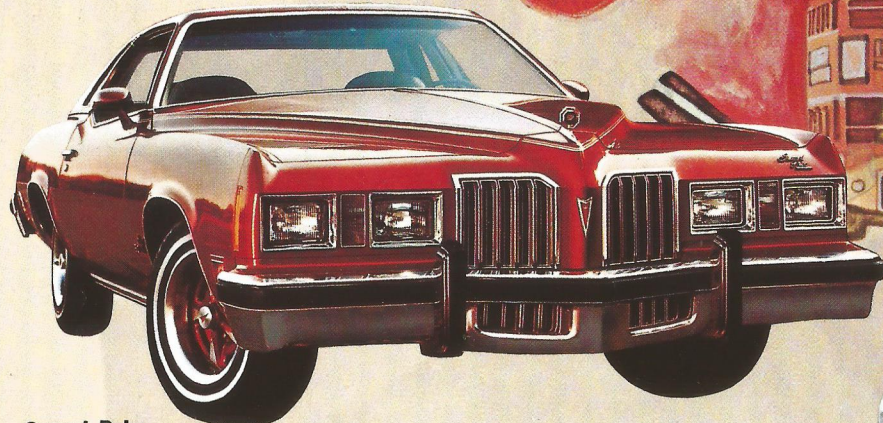
PONTIAC

The mark of great cars

The Pontiac mark stands for quality . . . value . . . a sense of responsibility . . . product innovation. And it stands for integrity — never to compromise the philosophy that all Pontiac owners deserve to get their money's worth. Every Pontiac must live up to the mark. Anything less would be less than a great car. And Pontiac exists to produce great cars. The Wide-Track people wouldn't have it any other way.



LeMans
A 3.8 litre-V6 engine is standard on all Coupe and Sedan models. V8 engines are available. A GT package is available on the Coupe and Sport Coupe.



Grand Prix
Hydra-matic and a 5.0 litre-2 bbl V8 engine are standard. In addition, Grand Prix "SJ" is equipped with bucket seats, console, and a 6.6 litre-4 bbl V8.



Sunbird
A brand new 2.5 litre-2 bbl 4 cyl. engine, teamed with a 3-speed manual is standard. A 3.8 litre V6 engine, a 4- or 5-speed manual, or Hydra-matic is available.

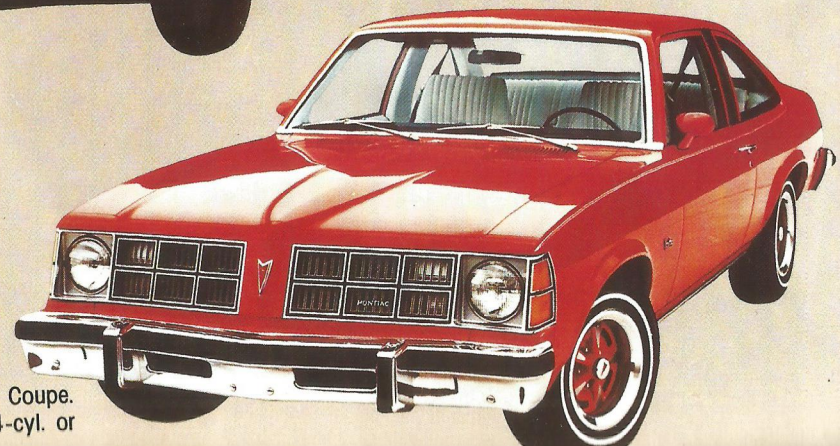


Astre
New 2.5 litre-2 bbl 4 cyl. engine is standard on Formula Hatchback and Wagon. Other features include radial tires with Rally RTS suspension.



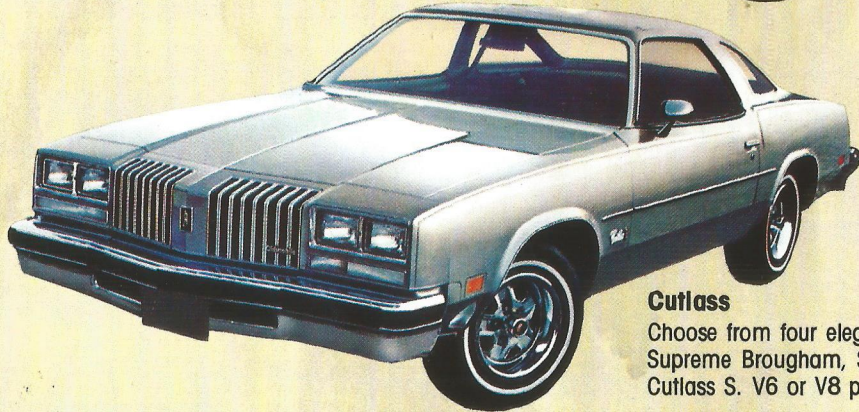
Bonneville - Catalina
More maneuverable and easier to park for 1977. Inside — more head room front and rear. V6 power is standard on Catalina (V8s available). V8 power is standard on Bonneville.

Ventura
Wide model choice: Ventura; SJ Hatchback, Coupe, or 4-dr. Sedan; Formula Hatchback, or Coupe. 3.8 litre-V6 engine standard. 4-cyl. or



Cutlass S 4-4-2

Bold rally stripes and a 4-section grille. Standard 3.8 litre-V6 engine. Three available V8s up to 6.6 litres. Bucket seats are available.



Cutlass

Choose from four elegant models: Cutlass Supreme Brougham, Salon, Supreme and Cutlass S. V6 or V8 power.



Ninety-Eight

The classic, sculptured look. Inside, limousine-like quietness and comfort, plus more efficient use of space. Available as Regency or LS models. All V8 power.



Omega

Built-in value includes 3.8 litre-V6 engine, front disc brakes, long-



OLDSMOBILE

From America's oldest, most experienced car maker come the best engineered cars in its 80-year history

The challenge for 1977 was to produce the best in Oldsmobile design and engineering with special attention to craftsmanship and detail — and to build the kind of cars that more completely fill the needs and life styles of a wide range of new-car buyers. Olds, in its continuing pursuit of excellence, has met that challenge.



Toronado

The front-wheel drive Toronado features Electronic Spark Timing. An onboard preprogrammed Microspacer continuously fine-tunes its V8 engine performance.



Delta 88

Head room increased front and rear. More trunk space. New built-in engine





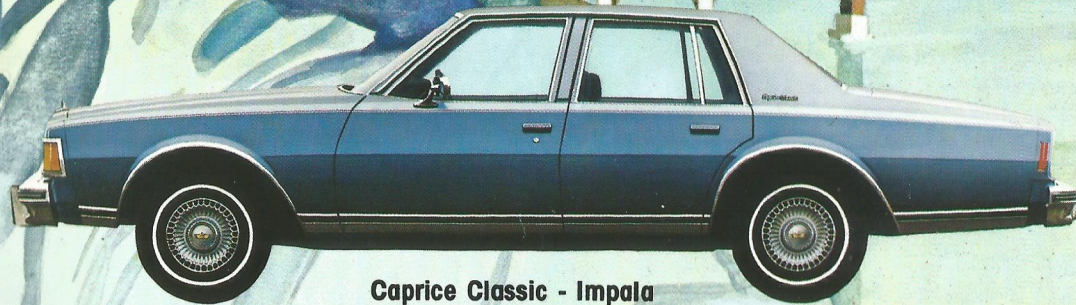
CHEVROLET

A new look for the leader

The exciting family of Chevrolet has made a beautiful change for the better in the Caprice and Impala. They're all new for 1977 — lean, sleek and handsome. New kinds of six-passenger cars, the Caprice and Impala are more impressively styled, easier to maneuver and more economical to operate. This year you can select your Chevy from eleven different models. Yes, the leader has a new look. Chevrolet — beautiful — and still Number 1.



Nova
Available in 2-door Coupe, 2-door Hatchback and 4-cyl. Sedan. A 4.1 litre-6 cyl. engine is standard. V8 power available.



Caprice Classic - Impala
More head, leg and trunk room than last year's models. Engines include standard 4.1 litre-6 cyl., available 5 litre-2 bbl V8 or 5.7 litre-4 bbl V8.



Chevelle
A complete choice of models: Classic Landau Coupe, Classic Sedan, Coupe, Sedan, and three Wagons. L6 and V8 power available.



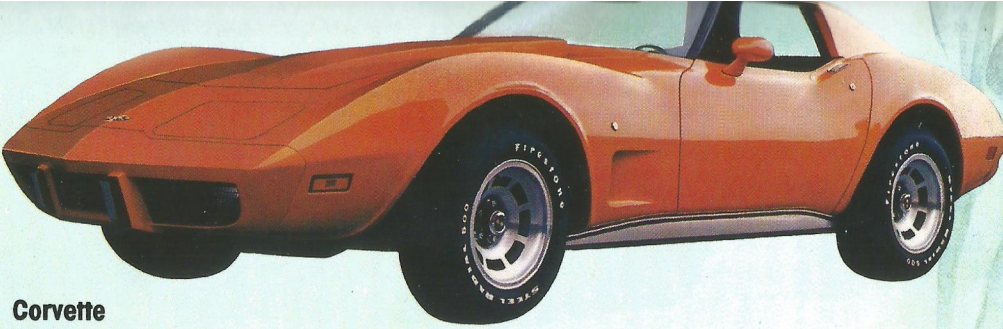
Monza 2+2 - Monza Towne Coupe

Standard power train is a 2.3 litre-4 cyl. engine with 4-speed manual transmission. 5.0 litre-2 bbl V8 available.



Vega

Line-up includes the 2-dr. Hatchback, Coupe and Wagon. A 2.3 litre-4 cyl. engine and 4-speed manual transmission are standard.



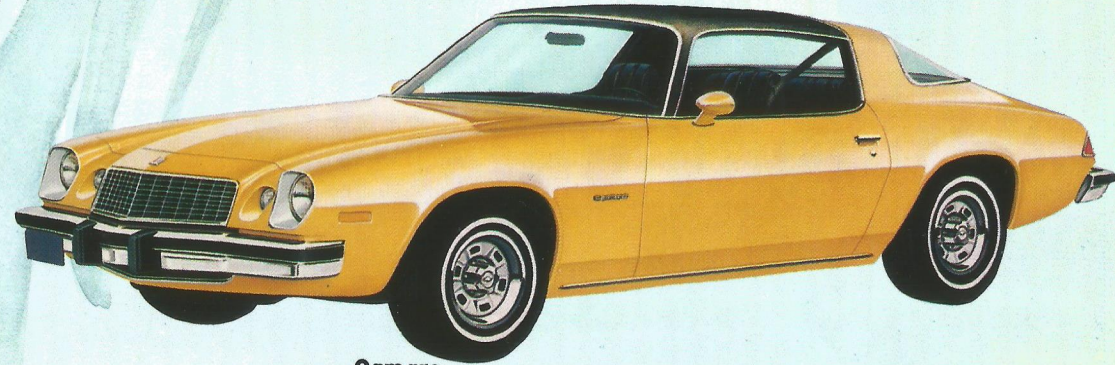
Corvette

Fully independent 4-wheel suspension, 4-wheel power disc brakes, 4-speed manual transmission and responsive V8 power set it apart from the others.



Chevette

Standard 1.4 litre-4 cyl. engine has approximately 10% more horsepower than in 1976. A more powerful 1.6 litre-4 cyl. engine is available.



Camaro

Standard equipment includes: 4.1 litre-6 cyl. engine, power steering, sports steering wheel, bucket seats, cockpit-like instrument panel. V8 power available.



Concoors

Engineered in the tradition of the great European road cars. Choice of three engines (L6 and two V8s) and three transmissions (3- and 4-speed manuals and one automatic).



Monte Carlo

Every Monte Carlo has a V8 engine, Hydra-matic, front disc brakes, radial tires, radial tuned full coil suspension, and front and rear stabilizer bars.



BUICK

A new generation of Buicks has arrived. Impressive to look at — a revelation to drive

When a new generation of cars is responsible for upholding the name "Buick," you know they have to be something special. Buick's well-earned reputation for quality and dependability is based on decades of solid engineering and imaginative design. And so it is for 1977. That's why Buick's new generation takes on this responsibility — eagerly.

Century

Standard features include: 3.8 litre-V6 engine, High Energy Ignition, Freedom Battery, power steering, front disc brakes. V8 power available.



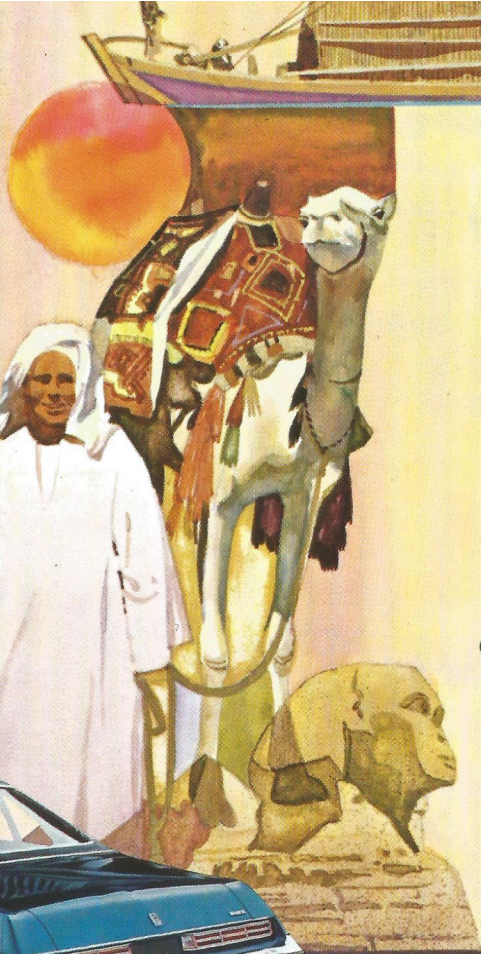
Skylark

Standard features include: big cushiony seats, cut-pile carpeting, Full-Flo ventilation, generous sound deadening. V6 and V8 power available.



Regal

Standard features include: 3.8 litre-V6 engine, power steering, power front disc brakes. V8 power available.



Electra 225 - Electra Limited

Richly appointed interiors, power front disc brakes, power steering, Hydra-matic, all V8 power, power windows and more are standard.



Skyhawk

Reminiscent of European GTs. Front and rear stabilizer bars. 3.8 litre-V6 and a 4-speed manual transmission, standard.

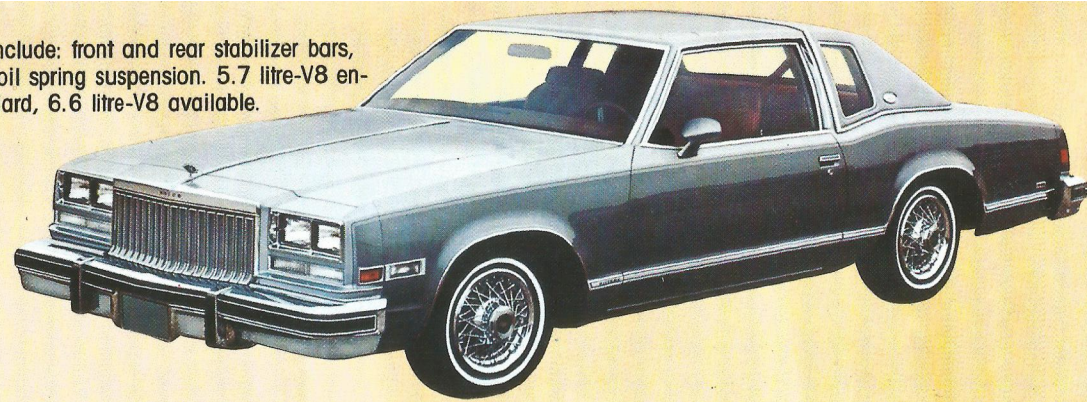


LeSabre

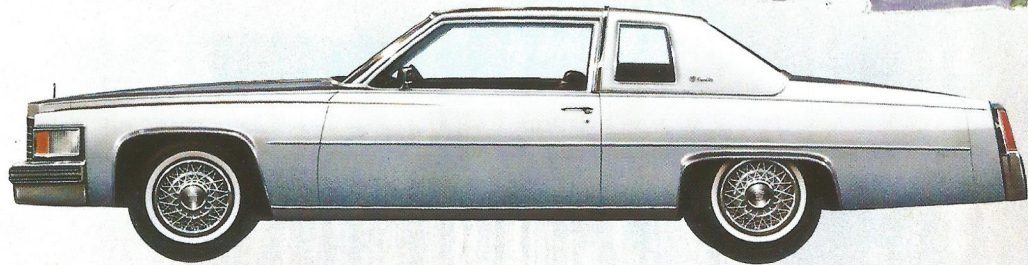
More maneuverable. More front head room, rear leg room and trunk space. V6 standard, V8 available.



Riviera
Features include: front and rear stabilizer bars, 4-wheel coil spring suspension. 5.7 litre-V8 engine standard, 6.6 litre-V8 available.



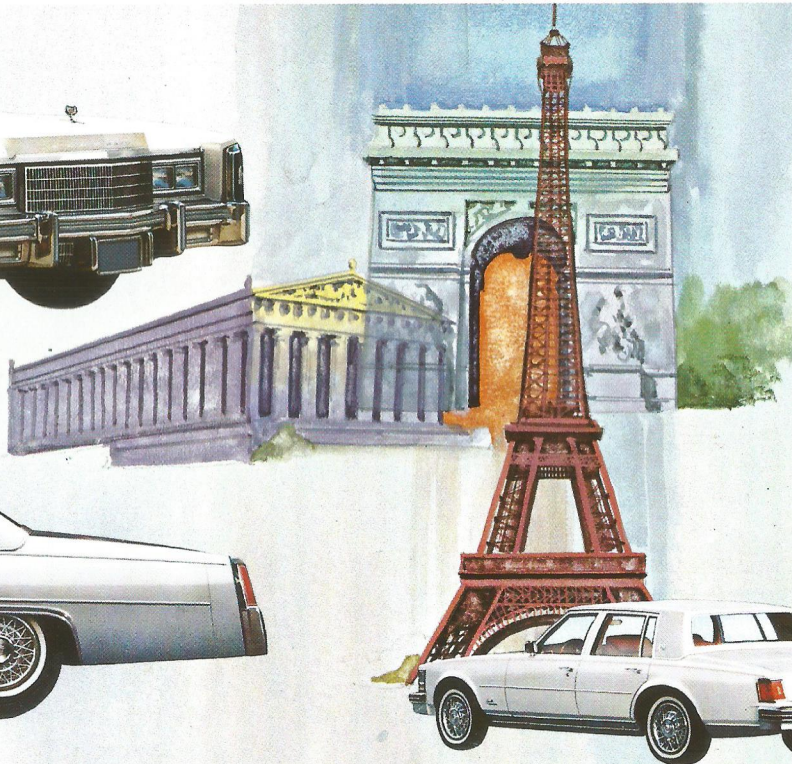
Eldorado
Standard features include: front-wheel drive, 4-wheel power disc brakes; Automatic Level Control, Automatic Climate Control, power steering, power windows and AM/FM Stereo.



Coupe DeVille - Sedan DeVille
Clean, crisp, sculptured lines. All new luxury plus more room where it counts — more leg room up front, more head room in the rear, and more trunk space than last year's models.



Seville
A wide range of standard features, such as 4-wheel power disc brakes and electronic fuel injection, makes Seville a unique luxury car. International in size, timeless in styling. Engineered to be one of the finest production cars built anywhere in the world.



CADILLAC
A full range of advanced luxury cars for a changing world



The 75th Anniversary Cadillacs continue to provide the luxury features, many as standard equipment, that have become synonymous with the Cadillac name. For 1977, most Cadillacs have been newly-designed and engineered in fresh and innovative ways to more completely satisfy the changing and differing needs of luxury car buyers everywhere. Each new Cadillac series has its own distinction, its own beauty, its own very high quality. And every Cadillac is V8-powered.

GM offers a wide selection of Station Wagons and Recreational Vehicles that give you space, comfort and style. Available equipment allows you to tailor your Wagon or Recreational Vehicle to the job you want it to do.



GMC Casa Grande



Chevrolet Vega Wagon



Chevy Van



Oldsmobile Vista-Cruiser



Pontiac Grand Safari

The General Motors Dealers' Military Sales Program . . .

The General Motors franchised dealers' sales representatives stationed at the major exchanges overseas are authorized by the local A&FES as well as the Navy Resale Systems Office to accept orders from authorized military personnel for delivery in the States or for shipment abroad.

A GM dealer sales representative is well qualified to give you the personalized attention you need in choosing the right car for your driving needs. He has the latest information on specifications, colors, prices and availability as well as up-to-date information on current buying trends back home.

The order is processed by General Motors Overseas Operations and provides for delivery of a new Chevrolet, Pontiac, Oldsmobile, Buick, Cadillac or GMC Vehicle at a number of convenient locations in the continental United States . . . or to the POE for shipment overseas.

The U.S. domestic carline dealers participating in the program have been selected because of the facilities they offer

and their interest in providing courteous service to returning service personnel and their families. The new car warranty is applicable to all cars delivered under this program regardless of where you travel in the States.

Military customers who cannot wait for normal production time can still take advantage of the price savings offered by the GM dealers Special Military Purchase Plan. They may choose from a stock of popular models available for prompt delivery.

You can buy your General Motors car from the GM dealers' sales representative at the Overseas Exchange, confident that the car you receive will be exactly as you ordered it. The special military price he extends to overseas personnel makes this opportunity to purchase a new General Motors car an attractive deal indeed.

See the GM dealers' sales representative at your local Overseas Exchange and get full details on the exciting new cars for 1977 and PLACE YOUR ORDER EARLY.

GENERAL MOTORS VEHICLE BODY DIMENSIONS	GM 0015		OVERALL LENGTH		OVERALL WIDTH		WHEELBASE		LOADED HEIGHT		HEAD ROOM FRONT		REAR		LEG ROOM FRONT		REAR		SHOULDER ROOM FRONT		REAR		HIP ROOM FRONT		REAR		USABLE LUGGAGE SPACE		FUEL TANK CAPACITY			
	in.	mm.	in.	mm.	in.	mm.	in.	mm.	in.	mm.	in.	mm.	in.	mm.	in.	mm.	in.	mm.	in.	mm.	in.	mm.	in.	mm.	in.	mm.	cu. ft.	litres	gals.	litres		
Typical Body Styles																																
Chevette	158.7	4031	61.8	1570	94.3	2395	52.3	1328	38.1	968	37.3	947	41.5	1054	28.7	729	50.1	1273	49.3	1252	49.9	1268	48.8	1240	26.2*	742	13	49.2				
Vega—Astre (Coupe)	175.4	4455	65.4	1661	97.0	2464	51.8	1316	38.8	986	38.0	965	43.5	1105	30.0	762	51.3	1303	49.2	1250	46.9	1191	42.5	1080	8.7	246	18.5	70.2				
Monza 2+2—Starfire—Skyhawk	179.3	4554	65.4	1661	97.0	2464	50.2	1275	37.7	958	35.3	897	42.8	1087	29.6	752	51.0	1295	51.2	1300	47.5	1207	42.0	1067	30.2*	855	18.5	70.2				
Camaro—Firebird	195.4	4963	74.4	1890	108	2743	49.2	1250	37.3	947	36.0	914	44.1	1120	29.6	752	56.7	1440	54.4	1382	52.4	1331	45.8	1163	6.4	181	21	79.5				
Corvette	185.2	4704	69.0	1753	98.0	2489	48.0	1219	36.2	919	—	—	42.1	1069	—	—	47.9	1217	—	—	47.8	1214	—	—	7.8	221	18	68.1				
Nova—Ventura—Omega—Skylark (Coupe)	196.7	4996	72.2	1834	111.0	2819	53.6	1361	38.5	978	36.6	930	41.7	1059	33.1	841	56.6	1438	55.3	1405	53.3	1354	52.8	1341	13.4	379	21	79.5				
Chevelle—LeMans—Cutlass—Century (Sedan)	209.3	5316	75.5	1918	116	2946	55.1	1400	37.9	963	37.3	947	42.4	1077	37.0	940	59.6	1514	58.9	1496	56.0	1422	57.9	1471	15.3	433	22	83.3				
(Coupe)	205.3	5215	75.5	1918	112	2845	53.1	1349	37.7	958	37.0	940	42.4	1077	32.9	836	59.6	1514	57.5	1461	56.0	1422	52.9	1344	15.3	433	22	83.3				
Monte Carlo—Grand Prix—Cutlass Supreme—Regal	212.7	5403	77.6	1971	116	2946	52.7	1339	37.5	953	37.4	950	42.1	1069	32.9	836	58.8	1494	57.1	1450	56.0	1422	52.9	1344	14.7	416	22	83.3				
Toronado—Eldorado	224.1	5692	79.8	2027	126.3	3208	54.1	1374	37.7	958	36.7	932	41.3	1049	35.5	902	58.8	1494	60.0	1524	58.8	1494	55.9	1420	15.5	439	27	102.2				
Impala—Caprice—Catalina—Bonneville—Delta 88—LeSabre—Riviera (Sedan)	212.1	5387	75.5	1918	116.0	2946	56.1	1425	39.2	996	37.9	963	42.3	1074	40.0	1016	61.1	1552	59.4	1509	55.0	1391	54.1	1374	20.0	566	20	75.7				
(Coupe)	212.1	5387	75.5	1918	116.0	2946	55.4	1407	38.6	980	37.6	955	42.2	1072	37.9	963	61.0	1549	59.3	1506	54.5	1384	54.3	1379	19.5	552	20	75.7				
Ninety-Eight—Electra—DeVille (Sedan)	221.2	5618	76.4	1942	121.5	3085	57.4	1458	39.0	992	38.0	965	41.9	1064	40.9	1038	61.0	1549	60.0	1524	55.4	1406	55.4	1406	19.6	555	24	90.8				
(Coupe)	221.2	5618	76.4	1942	121.5	3085	57.2	1453	38.2	970	38.0	965	41.9	1064	39.9	1017	61.0	1549	58.3	1481	55.2	1403	57.1	1450	19.6	555	24	90.8				
Seville	204.0	5182	71.8	1824	114.3	2903	54.7	1389	38.6	980	37.0	940	41.7	1059	38.2	970	54.6	1387	54.4	1382	51.4	1306	50.7	1288	12.8	362	21	79.5				

Body dimensions may vary slightly depending on make and model.

Some of the cars illustrated contain options and accessories offered at extra cost. General Motors Corporation reserves the right to make changes without notice at any time in prices, colors, materials, equipment, specifications and models, and also to discontinue models. All models, engines and available equipment pictured and listed in this catalog may not be available in some countries.

*with rear seat folded

Litho U.S.A.