

# ***DATSUN 310***

***PRODUCT OF NISSAN***





# The sporty 310 GX Coupe with front-wheel drive: a moving experience.

Want to put a little spice in your driving? Try the new front-wheel-drive Datsun 310 GX Coupe.

Put it on the road and feel the power of the new lightweight 1.5-liter engine. Shift the new 5-speed overdrive manual. A blast! Then check out the mileage\*. Wow! For 1982, the Datsun 310 has a whole new way to move you.

Look around at the comfort and luxury that's part of every 310 GX.

Plush velour upholstery. Thick carpeting everywhere, including the load area. Remote control door mirror for the driver. Electric rear-window defroster. Reclining bucket seats. The whole nine yards.

Best of all, it's built like a Datsun: with pride, with quality and with value built in. It's because we are driven to offer you a car you'll be proud of year after year.

\*See EPA estimates, page 11.

2



*The 310 Coupe GX, shown with optional body side moldings and sun roof.*







# The Datsun 310. A Four-Door with a difference.

There are all kinds of good things to be said about 4-door cars, but until the Datsun 310 came along sporting performance wasn't one of them.

This car changes all that forever. The 1982 Datsun 310 GX 4-Door Hatchback Sedan comes with more power than ever before to go with the superb handling of front-wheel drive. It also comes with a new 5-speed overdrive transaxle that saves gas in a big way, and plenty of room

for four grown-up adults.\*

The handling is everything you could ask, with fully independent suspension, power-assisted front disc brakes and precise rack-and-pinion steering.

The appointments are luxurious, and everywhere you look there are thoughtful extra touches of refinement. Halogen headlamps to pierce the dark of night. Side-window defoggers and electric rear-window

defroster. Child-safety rear door locks. Full instrumentation, including tachometer, trip odometer and coolant temperature gauge. There's even a quartz crystal clock.

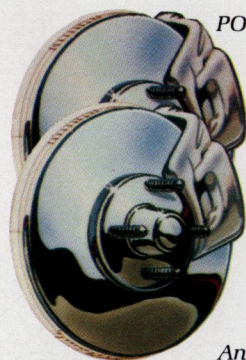
The 310 has one more feature that's getting to be a rarity anymore: quality. The seams line up. The panels fit. The pieces are all put together with care. It has everything it takes to make this a car that's good for you.

\*See EPA estimates, page 11.

4



A. 310 GX models have split, fold-down rear seat backs.  
B. A rear wiper and washer are standard on 310 GX models.



## POWER-ASSISTED FRONT DISC BRAKES

Every Datsun 310 comes with power-assisted disc brakes in front, where most of the braking is done. That's good because disc brakes are self-adjusting and self-drying in wet weather.

Discs are also lighter than drums, which contributes to handling and fuel efficiency.

And just to make the package complete, the power-assisted rear brakes are self-adjusting, too.







5



*The 310 4-Door Sedan GX, shown with optional body side moldings.*



# Datsun 2-Door 310. The return of the pleasure drive.

If you thought the fun went out of driving when the gas crunch hit, you haven't put yourself behind the wheel of a 310 GX 2-Door Hatchback Sedan.

The performance is all there, with a new lightweight 1.5-liter engine that has more horsepower and more torque than ever before. But there's more to a pleasure drive than power. There's also the superb

handling and unexpected room that goes with the 310's front-wheel-drive design. The suspension is fully independent all around and the brakes are power-assisted with discs in front. For precise control, there's also rack-and-pinion steering.

And the luxury and convenience are all there. Open the rear quarter windows from the driver's seat with remote controls. Another lever lets

you open the locking fuel-filler cap or release the hatch without getting out of the car. Above, you can have an optional sun roof that tilts up, lifts out or locks shut tight.

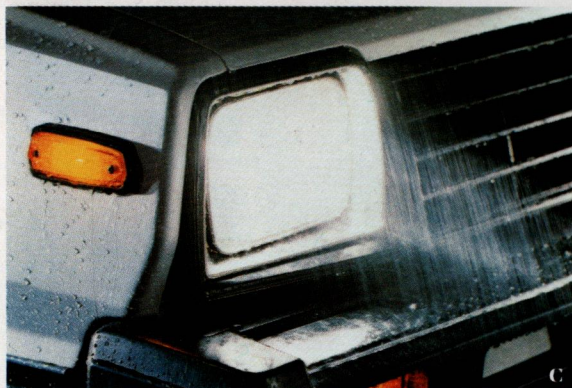
With it all goes another holdover from the good old days: that traditional Nissan quality.



A



B



C

A. The handsome and economical 310 2-Door Sedan Deluxe, shown in this picture with optional body side moldings.

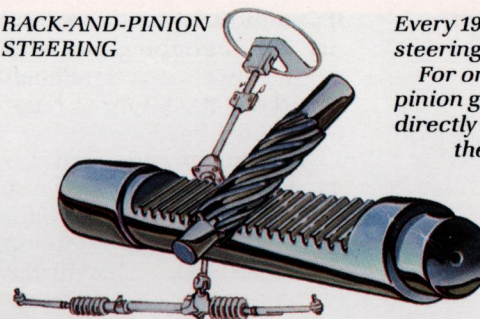
B. The 310 GX models have a color-coordinated cargo cover.

C. 310 GX has bright halogen headlights to light the way.





# RACK-AND-PINION STEERING



Every 1982 Datsun 310 comes with rack-and-pinion steering, and that's good for some important reasons. For one, the steering is light and precise. A small pinion gear at the end of the steering column operates directly on a "rack" of gear teeth that connects to the steering arms. Turn the wheel one notch of the pinion and the rack moves exactly one notch. No more, no less. It's ideal for a high-performance car like this.

For another thing, the system is direct so it gives you superb road feel. Your sense of control isn't lost in a sea of mush. Lightness with control. That's a very desirable bit of teamwork.

7



The optional sun roof locks tight, tilts up or lifts out.



The 310 2-Door Sedan GX, shown with optional body side moldings and sun roof.



# Inside the Datsun 310: astonishing silence and total comfort.

Take the Datsun 310 out on the road and you'll immediately notice two important things: the uncanny silence and the abundance of comfort and convenience features.

The silence comes from more than just insulation, although the floorpan is covered with not just one or two, but three layers of soundproofing. (The bottom layer is actually melted into place for complete contact.)

A number of other design features also help keep the 310 quiet. The engine, for example, is designed not only for power, but for lower noise output. Even the suspension is tuned to soak up vibrations in annoying parts of the sound spectrum.

For your convenience, there's an electric rear-window defroster. Warning chimes instead of a harsh buzzer when a door is left unlatched or you forget to take your

key or buckle your seatbelt. Stalk controls for lights, turn signals, high beams, windshield washer and wipers. GX models even have a rear window washer and wiper, standard.

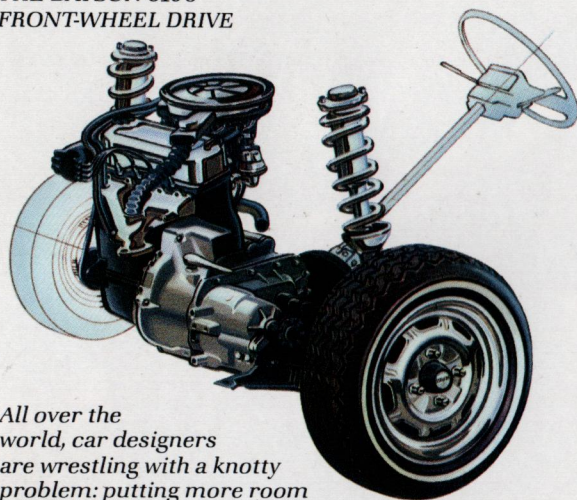
And there's room. Because of the 310's space-saving front-wheel drive design, there's more passenger room than you'd expect in cars much bigger than this. That just might be the ultimate comfort feature.

8



A. Remote-control driver's mirror, standard on every 310.  
B. 310 2-Door Sedan GX has remote rear-window openers.

## THE DATSUN 310's FRONT-WHEEL DRIVE



All over the world, car designers are wrestling with a knotty problem: putting more room into a car while extracting more miles from a gallon.

As you might expect, Nissan has developed some of the most successful solutions, including the front-wheel-drive design of the Datsun 310.

This configuration takes up very little space, leaving more room for passengers. That's partly because the engine is mounted crosswise, permitting the firewall to be moved far forward of its usual position. Also, the only "tunnel" is a small one to stiffen the floor pan and provide passage for hydraulic lines, exhaust pipe and wiring.

And there's a substantial weight savings which is a major factor in the 310's fuel economy.\*

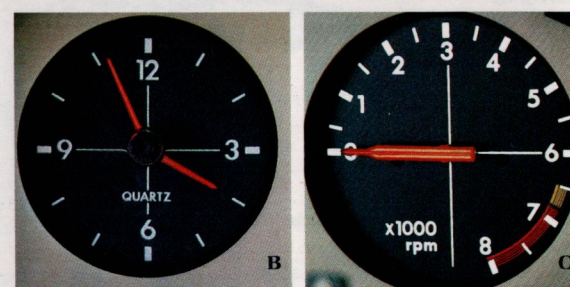
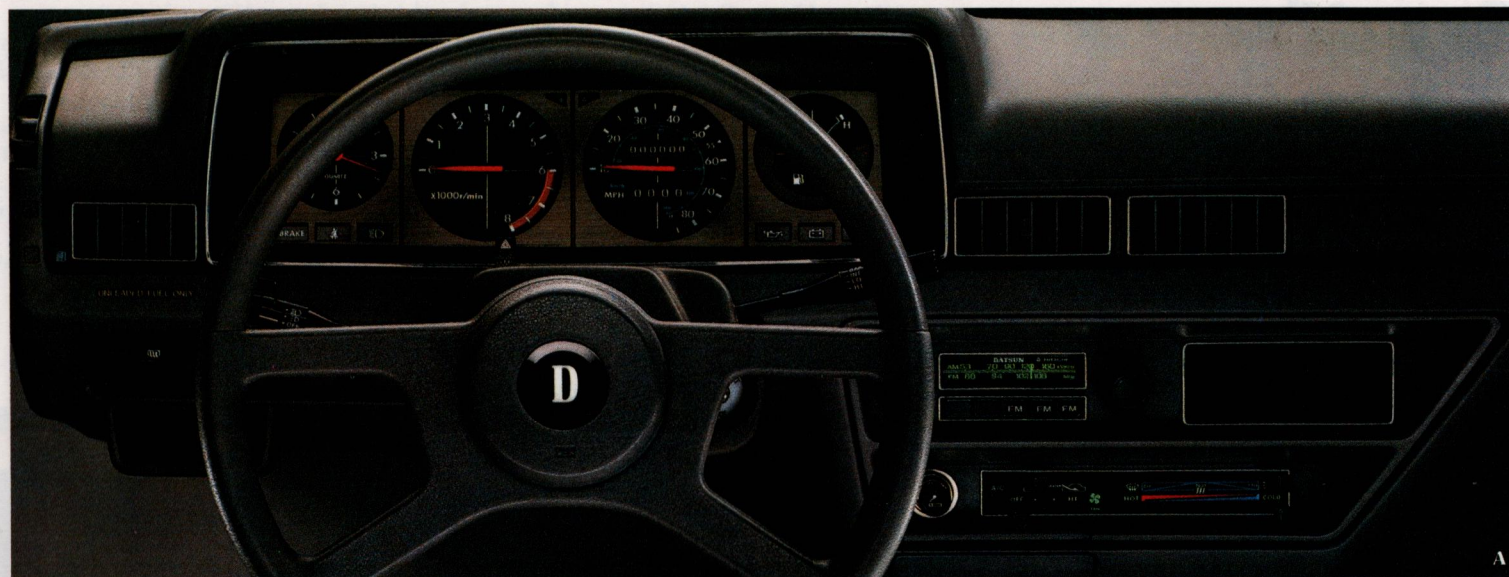
Finally, there's another benefit: that superb front-wheel-drive handling because the engine pulls the car rather than pushing it. One knotty problem. One intelligent solution. Three consumer benefits. That's our kind of parlay.

\*See EPA estimates, page 11.



The 310 GX interior is upholstered in rich velour.



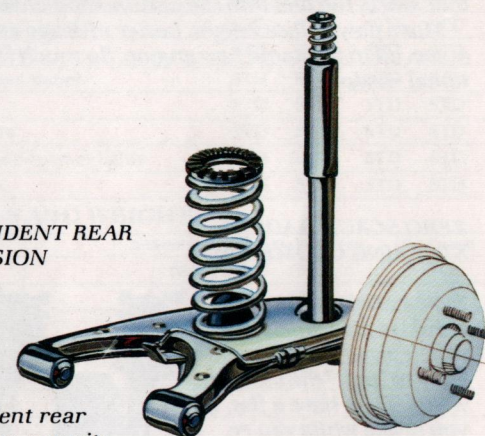


A. The 310 GX dashboard, shown here with optional AM/FM stereo radio, plus fully integrated air conditioning.

B. A quartz crystal clock is standard on 310 GX models.

C. GX models also are equipped with an electronic tach.

#### INDEPENDENT REAR SUSPENSION



Independent rear suspension permits each rear wheel to react to bumps on its own.

That provides two very important benefits: On cars without such a system, a bump deflects the whole rear suspension as a unit. Both tires lose a little bit of their road contact and you lose a little of the handling that was built into your car.

Second, because the mass of one wheel reacting to a bump is less than the whole rear suspension reacting, it's easier to control an uncomfortable jolt to the passengers.

Independent rear suspension is just one more example of the commitment to quality that sets Nissan apart.



# From Nissan with pride.

10

## NISSAN'S NEW HIGH-POWERED LIGHTWEIGHT ENGINE

Conventional wisdom has it that increased fuel efficiency exacts a price in lower engine power.\*

But the 1.5-liter overhead-cam engine in the new Datsun 310 delivers more power from less gas than last year's engine. It's also 22 pounds lighter, considerably smaller and a lot quieter.

Some of the ways that was achieved include quiet rubber timing belt, new aluminum rocker arms and a special intake port design that swirls the fuel into the combustion chamber.

More power, less weight, better mileage and less noise, all in the same new engine. So much for conventional wisdom.

## ZERO SCRUB-RADIUS STEERING GEOMETRY

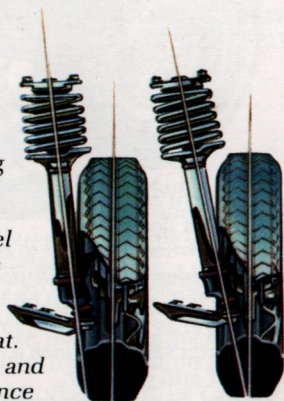
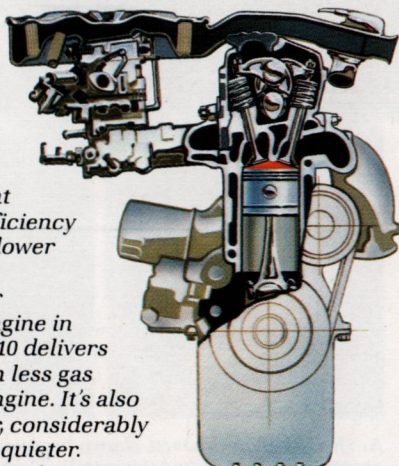
Most cars have positive scrub-radius steering, which gives them a tendency to "pull" the steering wheel if you have a flat, if you brake while you're turning the steering wheel or if one of the front tires hits a slick spot.

Nissan's zero scrub-radius steering solves that. Look at the pictures here and you'll see that the difference is the angle of the steering pivot.

If the pivot line points toward a spot inside of the place where the tire contacts the road, you've got positive scrub-radius (left picture) and a car that can try to steer itself in the conditions mentioned above.

But if the pivot line points straight at that contact patch, as in the 310, you've got zero scrub-radius (right picture) and a car that leaves the steering up to you.

\*See EPA estimates, page 11.



Nissan Motor Co., Ltd., manufacturer of Datsun cars and trucks, has a firm commitment to quality. The depth of that commitment is apparent in every Datsun sold.

It starts with a concept that takes into account the function of the car, the comfort of the user and the kind of driving that will be done with it.

It includes design excellence. The kind of technical achievements and innovations you've seen throughout

this brochure. Nissan's engineers never stop looking for ways to apply the latest technology to the car you'll be driving.

And it includes the kind of meticulous construction and relentless testing that go into every single Datsun. Production lines aren't just a chain of individual jobs. They're teamwork, with every person on the line entitled to stop the production if a problem comes up. Nissan workers have the

right—indeed, are expected—to check the quality of the pieces they're given to work on. And rigorous tests, including dumping tons of high-pressure water on the finished vehicle, are conducted on every single Datsun car and truck.

All of that is why we say we are driven to offer you vehicles built to last. To conserve energy. To meet your expectations. Cars and trucks built with pride.

## Genuine Datsun Accessories: Your Assurance of Quality.

For nearly fifty years, Nissan Motor Co., Ltd. has been building Datsun cars and trucks with a single-minded devotion to quality.

It's this kind of drive and dedication to excellence that's your assurance of quality in every Genuine Datsun Accessory.

### EXTERIOR ACCESSORIES

**A. 4-Season Roof Rack.** Like having an extra trunk on top. **Bike Attachment.** (Not shown.) Carries your bike wherever you go. **Ski Attachment.** Keeps your skis safe and secure.

**B. Halogen Fog Lights.** Slice through the fog like a knife. Helpful in any weather.

(SHOWN ELSEWHERE IN THIS BROCHURE.) **Body Side Moldings.** Help reduce dings, chips and scratches in parking lots. (NOT SHOWN.)

**Mag-Style Aluminum Alloy Wheels.** Put them on and it's show time.

**Remote-Control Passenger Door Mirror.** Double your viewing. Add a great-looking mirror to match the driver's side mirror.

**Custom Striping Kit.** Customize your 310 with our colorful stripes.

**Car Cover.** Protect your investment with a custom-fitted cover to keep away salt air, smog and weather.

**Engine Block Heater.** It's a great way to ensure fast starts in cold weather. Just plug it into an electrical outlet.

**Resin Glaze and Touchup Paint.** Helps keep your finish looking showroom-new.

### INTERIOR ACCESSORIES

**C. Floor Mats.** Color-coordinated carpeted design is long-lasting and beautiful.

(SHOWN ELSEWHERE IN THIS BROCHURE.)

**Air Conditioning.** Fully integrated with the heating and ventilating system.

### AUDIO ACCESSORIES

**D. AM Radio.** Great reception with five station selection buttons.

**E. AM/FM Monaural.** You'll be moved by the clear, full-bodied sound.

**F. AM/FM Stereo.** It'll flood your 310 with waves of stereophonic sound.

**G. AM/FM Stereo with Cassette (Manual-Tune)** Turn your car into a concert hall.

**H. AM/FM Stereo with Cassette (5-Button Tune)** The ultimate. You tune with the touch of a finger.

**I. Cassette Deck.** It'll add a new dimension to your system.

(NOT SHOWN.) **Whip Antenna.** Bends with the wind and picks up remote stations.

**Speaker Kits.** Custom designed to look and sound as if they belong in your living room.



\*See EPA estimates, page 11.





	2-Door Sedan Deluxe	2-Door Sedan GX	4-Door Sedan GX	Coupe GX
<b>MECHANICAL FEATURES</b>				
<b>Engine</b>				
1.5-liter (1488cc) 4-cyl. OHC	STD	STD	STD	STD
2-barrel carburetor with 2-stage automatic choke	STD	STD	STD	STD
Catalytic converter	STD	STD	STD	STD
<b>Electrical</b>				
Transistorized ignition system	STD	STD	STD	STD
Solid-state voltage regulator	STD	STD	STD	STD
Maintenance-free battery, 12V, 60AH	STD	STD	STD	STD
<b>Transmission</b>				
4-speed manual all-synchromesh with 3.650 final drive ratio	STD	—	—	—
5-speed overdrive manual all-synchromesh with 3.895 final drive ratio	—	STD	STD	STD
3-speed automatic with 3.364 final drive ratio*	—	OPT	OPT	OPT
<b>Brakes, Steering &amp; Suspension</b>				
Power-assist front disc/rear drum brakes	STD	STD	STD	STD
Rack-and-pinion steering	STD	STD	STD	STD
Power-assisted steering**	—	OPT	OPT	OPT
Independent MacPherson strut front/semi-trailing arm independent rear suspension	STD	STD	STD	STD
<b>Wheels &amp; Tires</b>				
4½ J 13 styled steel wheels with center cap	STD	STD	STD	STD
Bright trim ring	—	STD	STD	STD
165/70 SR 13 steel-belted radial blackwall tires	—	STD	STD	STD
155 SR 13 steel-belted radial blackwall tires	STD	—	—	—
<b>EXTERIOR FEATURES</b>				
<b>Windows</b>				
Tinted glass all around	STD	STD	STD	STD
Roll-down rear side windows	—	—	STD	STD
Flip-out rear side windows	STD	STD	—	—
<b>Other</b>				
Rear-window wiper/washer	—	STD	STD	STD
Variable intermittent windshield wipers	—	STD	STD	STD
Black remote-control driver's side mirror	STD	STD	STD	STD
Halogen headlights	—	STD	STD	STD
Bright impact-absorbing bumpers with rub strip, front & rear	STD	STD	STD	STD
Dual-tone horn	STD	STD	STD	STD
Child-safety rear lock doors	—	—	STD	—
Corrosion protection	STD	STD	STD	STD

	2-Door Sedan Deluxe	2-Door Sedan GX	4-Door Sedan GX	Coupe GX
<b>INTERIOR FEATURES</b>				
<b>Courtesy Lights</b>				
Cargo light	—	STD	STD	STD
Ash tray illumination	—	STD	STD	STD
Cigarette lighter illumination	STD	STD	STD	STD
<b>Instruments</b>				
Speedometer	STD	STD	STD	STD
Trip odometer	STD	STD	STD	STD
Tachometer	—	STD	STD	STD
Fuel gauge	STD	STD	STD	STD
Coolant temperature	STD	STD	STD	STD
Quartz clock, small	—	STD	STD	STD
Quartz clock, large	STD	—	—	—
<b>Warning Lights</b>				
Brake	STD	STD	STD	STD
Charging	STD	STD	STD	STD
Hazard warning	STD	STD	STD	STD
High beam	STD	STD	STD	STD
Oil pressure	STD	STD	STD	STD
Rear-window defroster	STD	STD	STD	STD
Seat-belt warning	STD	STD	STD	STD
<b>Heating/Ventilation</b>				
Flow-through ventilation	STD	STD	STD	STD
Bi-level heater/defroster, 3-speed fan	STD	STD	STD	STD
<b>Seating</b>				
Fully reclining lowback front bucket seats with adjustable head restraints	—	STD	STD	STD
Fully reclining highback front bucket seats with built-in head restraints	STD	—	—	—
Fold-down rear seat back	STD	—	—	—
Split fold-down rear seat backs	—	STD	STD	STD
Soft vinyl upholstery	STD	—	—	—
Cloth full-face upholstery	—	STD	STD	STD
<b>Convenience</b>				
Comfort group: fully integrated air conditioning and power steering	—	OPT	OPT	OPT
Inside hood release	STD	STD	STD	STD
Remote hatch opener	—	STD	STD	STD
Remote fuel-filler door opener	—	STD	STD	STD
Remote opener for rear side windows	—	STD	—	—
Electric rear-window defroster	STD	STD	STD	STD
Side-window defoggers	STD	STD	STD	STD
Ash trays, front and rear	STD	STD	STD	STD
Center console	—	STD	STD	STD
Coin holder	STD	STD	STD	STD
Lockable glove box	STD	STD	STD	STD
Color-coordinated detachable rear cargo cover	—	STD	STD	STD
Passenger vanity mirror	—	STD	STD	STD

	2-Door Sedan Deluxe	2-Door Sedan GX	4-Door Sedan GX	Coupe GX
<b>INTERIOR FEATURES (Cont.)</b>				
<b>Other</b>				
Warning chimes	STD	STD	STD	STD
Three-position lift-out sun roof with inner sunscreen, wind deflector and storage bag	—	OPT	—	OPT
Full carpeting including cargo area	STD	STD	STD	STD
Color-coordinated 2-spoke steering wheel	STD	—	—	—
Color-coordinated wrapped 4-spoke sport steering wheel	—	STD	STD	STD
Color-coordinated day/night rear view mirror	STD	STD	STD	STD
<b>SAFETY FEATURES</b>				
Energy-absorbing steering column	STD	STD	STD	STD
Seat belts	STD	STD	STD	STD
Front seat-belt warning light	STD	STD	STD	STD
Dual brake system	STD	STD	STD	STD
Impact-absorbing bumpers	STD	STD	STD	STD
4-way hazard warning lights	STD	STD	STD	STD
Steering-column lock	STD	STD	STD	STD
Padded instrument panel	STD	STD	STD	STD
Backup lights	STD	STD	STD	STD
Padded sun visors	STD	STD	STD	STD
Front and rear side-marker lights	STD	STD	STD	STD
Safety door locks	STD	STD	STD	STD
<b>DIMENSIONS AND WEIGHT</b>				
	2-Door Sedan	4-Door Sedan	GX Coupe	
Wheelbase (in.)	94.3	94.3	94.3	
Length (in.)	160.6	160.6	160.6	
Width (in.)	63.8	63.8	63.8	
Height (in.)	53.5	53.5	52.0	
Turning diameter (ft.)	31.5	31.5	31.5	
Curb weight† (lbs.)	1936	1958	1947	
Fuel capacity (gal.)	13.2	13.2	13.2	
<b>1982 E.P.A. ESTIMATED 310 MPG</b>				
	4-speed	5-speed	Automatic*	
49-States HWY MPG/EST MPG	45/34	47/33	N.A.	
California HWY MPG/EST MPG	45/32	45/31	N.A.	
1982 E.P.A. estimates. <b>Remember:</b> Compare these estimates to the "estimated MPG" of other cars. You may get different mileage, depending on how fast you drive, weather conditions and trip length. <b>Also remember</b> that your actual highway mileage will probably be less than the EPA estimated highway fuel economy.				
*Available in early 1982. Mileage not available at time of printing. **Part of Comfort Group, including air conditioning and power steering. †Vehicles with optional equipment or California emissions equipment will be slightly heavier. Deluxe 2-door: 1892.				
All illustrations and specifications in this catalog are based on the latest product information available at time of publication. Nissan Motor Corporation in U.S.A. reserves the right to make changes at any time, without notice, in prices, colors, materials, equipment, specifications and models, and to discontinue models or equipment. For information on additional options and accessories, contact your Datsun dealer. All specifications, options and accessories shown in this catalog apply to the 49 states. Specifications, options and accessories may differ in Hawaii, U.S. territories and other countries.				



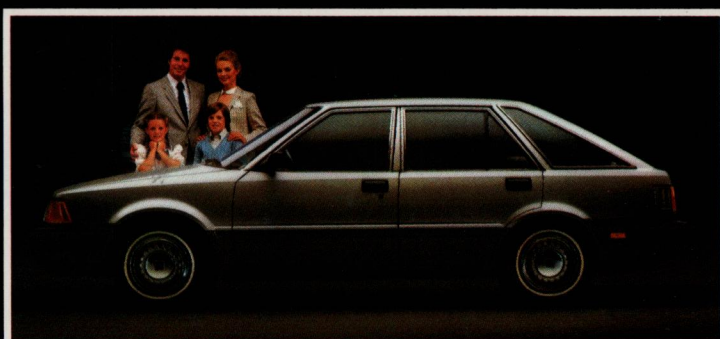
# Built by Nissan, sold by your Datsun Dealer: a full selection of quality cars and trucks.



Datsun 210. Lasting quality and economy.



Datsun Maxima. Luxury with gasoline or diesel power.



Nissan Stanza. The shape of things to come.



Datsun 280-ZX. Awesome and then some for 1982.



Datsun 200-SX. Sophistication that speaks for itself.



Datsun Trucks. From one tough customer to another.

**DATSUN**  
**WE ARE DRIVEN**  
PRODUCT OF NISSAN

