

1983 FORD WAGONS



A FORD FOR EVERY WAGON NEED: COUNTRY SQUIRE. THE NEW-SIZE LTD. FORD ESCORT.

Country Squire: Full-Size Luxury and Spaciousness

Country Squire has more cargo room than any wagon in America with nearly 90 cu. ft. (rear seat down).^{*} Two hidden lockable stowage compartments add 11.9 cu. ft. more.

Country Squire is big on people space, too. The spacious interior provides full-size room for six passengers. Add the dual facing rear seats option, and capacity increases to eight. All ride in traditional quiet comfort.

The 3-Way Magic Doorgate, a Ford innovation, opens like a door (window up or down) and lowers like a conventional tailgate. It's a Country Squire feature that has been widely copied. Also available is DuraWeave vinyl trim, another innovation of the Wagonmaster. Ideal for families, DuraWeave looks, feels and breathes like cloth, yet cleans and wears like vinyl. There's the added convenience of a removable load floor carpet. And along with a 5.0 liter V-8 engine with Electronic Fuel Injection (EFI), Country Squire features the remarkable Automatic Overdrive transmission for highway fuel efficiency.^{**}

The New 1983 LTD Wagon: Five-Passenger Roominess and Comfort

The new LTD offers high style, comfort and efficiency. Sleek-lined outside, LTD features a roomy, well-appointed interior package for five. And, with the rear seat folded down, there's a full 75.4 cu. ft. of cargo space.

LTD is a station wagon for the 80's, designed for optimum aerodynamics and fuel efficiency.^{**} The remarkably smooth ride, too, is the result of modern technology. The modified MacPherson front suspension is com-

bined with innovative gas-filled shocks which use gas pressure to ensure continuous hydraulic control even on severely broken road surfaces. The steering system is the proven rack and pinion type for precise control.

And special wagon features you'll appreciate are standard. Carpeted cargo area. A handy lockable side stowage compartment. A light in the cargo area. "Liftgate Open" warning light. Tinted glass in the liftgate. The optional Two-Way Liftgate swings up completely or, if you wish, just the window portion opens.

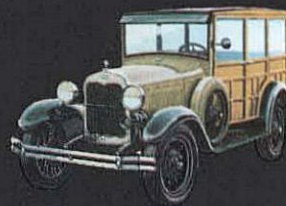
The new LTD Wagon is also available with the distinctive Squire Option.

Escort Wagon for 1983: World Car Style and Practicality

Escort is the only American-built wagon with both the traction of front-wheel drive and the smoothness of four-wheel independent suspension.[†] And it offers, in a trim package, fully 58 cu. ft. of cargo space when the rear seat is folded down. It's an economical wagon, too. The standard 1.6 liter CVH engine and 4-speed manual overdrive transaxle, combined with the use of special high-strength steel for lighter weight, add up to excellent fuel efficiency.^{**}

Escort Wagon features load floor carpeting, a removable cargo cover to help keep your valuables out of sight, a handy "liftgate ajar" warning light and deluxe sound insulation to help keep the world's noise outside.

Choose from L, GL and GLX trim levels. And, for the GL and GLX series, the distinctive Squire Option is available with its handsome woodtone accents and a deluxe luggage rack.



The Wagonmaster tradition began at Ford over half a century ago with the original 1929 "Woody" wagon. The 1983 lineup represents the latest in innovative wagon technology and Ford's commitment to quality.



Top to Bottom: Escort GLX Wagon in Light Academy Blue Glow, Ford LTD Wagon in Polar White, Country Squire in Maroon.

^{*}Based on EPA Cargo Volume Index. Comparison excludes other Ford Motor Company products.

^{**}See Gas Mileage on appropriate "Data Center" pages.

[†]Excluding other Ford Motor Company products.



Included with the Squire Option, the Deluxe Luggage Rack is available on all Escort Wagons. Shown with dealer-installed ski rack.



A full 58 cu. ft. of cargo area (rear seat down) reveals Escort's practical virtues.

Escort's color-keyed cargo area cover helps keep your valuables out of sight.



**THE 1983 FORD ESCORT WAGON:
STYLISH UTILITY WITH ECONOMY.**



Escort GLX Wagon in Bright Red.

Escort GL with Squire Option in Light Pewter Metallic.

FORD ESCORT WAGON DATA CENTER

OPTIONS SELECTOR ENTERTAINMENT SYSTEMS

■ AM/FM Monaural Radio ■ AM/FM Stereo Radio ■ AM/FM Stereo Radio with Cassette Tape Player ■ AM/FM Stereo Radio with 8-Track Tape Player ■ Premium Sound System.* For all stereo radios. Includes power amplifier and upgraded rear speakers.

NOTE: All stereo radios include dual front and rear speakers.

APPEARANCE

■ Dual Remote-Control Sport Mirrors. Standard on GLX. ■ Tu-Tone Paint/Tape Treatment* ■ Squire Wagon Option. Woodtone vinyl side panels and rails, brown body-side moldings with black inserts, deluxe luggage rack. For GL and GLX Wagons only. ■ Bright Trim Rings. Standard with GLX. ■ Cast Aluminum Wheels.

COMFORT

■ Air Conditioner. Tinted glass recommended. ■ Tinted Glass—Complete ■ Pivoting Front Vent Windows* ■ Reclining Front Seat Backs (high-back buckets) ■ Reclining Low-Back Bucket Seats. Standard in GL and GLX.

ESCORT INTERIORS

Escort L. High-back bucket seats in cloth and vinyl trim, standard; vinyl trim, optional. Reclining low-back bucket seats in cloth and vinyl, available.

Escort GL. Reclining low-back bucket seats in cloth and vinyl trim, standard; knit vinyl trim, optional.

Escort GLX. Reclining low-back bucket seats in cloth and vinyl standard; knit vinyl trim, optional.

CONVENIENCE

■ Rear Window Wiper/Washer ■ Fingertip Speed Control ■ Console. Features graphic display warning module that signals "low washer fluid," "low fuel," and indicates when headlights, taillamps or parking lamps are out. ■ Electric Rear Window Defroster ■ Instrumentation Group. Tachometer, trip odometer, temperature gauge. ■ Electronic Digital Clock. Standard in GLX. ■ Light Group. Lights in glove box, ashtray, engine compartment; pivoting dome/map light, liftgate courtesy light switch, headlamps on warning buzzer. Standard in GLX. ■ Tot-Guard. For children weighing 20-50 pounds. Infant Carrier also available for children up to 20 pounds. Both available at your Ford Dealer. ■ Interval Windshield Wipers. Standard in GLX. ■ Deluxe Luggage Rack



Pivoting Front Vent Windows



GLX Low-Back Bucket Seats in Medium Red Cloth

PERFORMANCE

■ 1.6 Liter Higher Output Engine. ■ 1.6 Liter Engine with Electronic Fuel Injection (EFI). See your Ford Dealer for availability. ■ 5-speed Manual Transaxle, Close Ratio ■ Split-Torque Automatic Transaxle ■ Heavy-Duty Battery ■ Handling Suspension. * Includes larger front stabilizer bar, heavy-duty shocks, stiffer spring rates front and rear. ■ High Altitude Emissions System* ■ California Emissions System*

POWER ASSISTS

■ Power Steering

PROTECTION

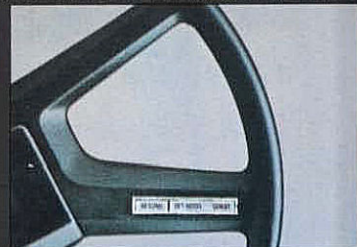
■ Appearance Protection Group. Door edge guards, color-keyed front floor mats, rear license plate frame, glove box lock. ■ Front Bumper Guards ■ Rear Bumper Guards ■ Front and Rear Bumper Rub Strips. Standard on GL, GLX. ■ Vinyl Insert Bodyside Moldings. Standard on GL, GLX. ■ Lower Bodyside Protection. Vinyl coating under the paint along the lower bodysides helps protect against stone pecking and road salt.

TIRES

■ P175/80R13 BSW; P175/80R13 WSW; P165/80R13 WSW.

OPTIONS AVAILABILITY

1983 Ford Escort options are not confined to these pages but are shown also on preceding pages. Options, whether or not they are identified, are offered at extra cost. Options designated by an asterisk (*) are offered either in combination with other options, or are subject to additional ordering requirements or limitations. Availability of some features described here and elsewhere may be subject to delay.



Fingertip Speed Control

ALSO WELL WORTH CONSIDERING...



Ford Motor Company's optional Extended Service Plan covers major components on Ford cars and light trucks for longer than the vehicle's basic warranty. The cost is so moderate for the protection you get that it could pay for itself the first time you need it. Your Ford Dealer will be happy to detail the plan for you. Available on all cars and most light trucks, it is honored by more than 6,500 Ford and Lincoln-Mercury dealers nationwide and in Canada.

PRODUCT CHANGES

Ford Division reserves the right to change product specifications at any time without incurring obligations.

"ASK YOUR FORD DEALER"

Following publication of this catalog certain changes in standard equipment, options, prices and the like, may have occurred which would not be included in these pages. Your Ford Dealer is your best source for up-to-date information.

NOTABLE STANDARD FEATURES

ENGINEERING:

	L	GL	GLX
Front-wheel drive	S	S	S
4-wheel independent suspension with MacPherson strut front system and stabilizer bar; rear parallel bar axles with coil springs	S	S	S
1.6 liter CVH engine	S	S	S
DuraSpark Electronic Ignition	S	S	S
Electronic voltage regulator	S	S	S
Maintenance-free battery	S	S	S
4-speed manual transaxle with overdrive fourth gear	S	S	S
Manual rack and pinion steering	S	S	S
Power front disc brakes	S	S	S
P165/80R13 3" BSW steel-belted radial ply tires	S	S	S
2-speed windshield wipers/fluidic washer system	S	S	S
Deluxe Sound Insulation Package	S	S	S

EXTERIOR:

	L	GL	GLX
Halogen headlamps	S	S	S
Front air dam	NA	S	S
LH mirror	S	S	NA
Dual color-keyed remote-control mirrors	O	O	S
Vinyl insert bodyside moldings	O	S	S
Bodyside accent stripes	O	S	S
Brushed aluminum "B" pillar appliques	O	S	S
Matte black rocker paint	O	S	S
Bumper rub strips and end caps (Deluxe on GL, GLX)	S	S	NA
Semi-styled steel wheels	S	S	NA
Styled steel wheels with trim rings	O	O	S

INTERIOR:

	L	GL	GLX
High-back cloth and vinyl bucket seats	S	NA	NA
Reclining low-back bucket seats in cloth and vinyl	O	S*	S*
Deluxe seat belts with comfort regulator feature	S	S	S
Folding rear seat (carpeted seat back on GLX)	S	S	S
AM radio (may be deleted for credit)	O	S	S**
"Soft Feel" instrument panel padding with integral coin trays	S	S	S
Steering-column mounted controls for turn signals, headlamp dimmer, flash-to-pass feature, windshield wipers/washer and horn	S	S	S
Remote-control locking fuel filler door	NA	S	S
Soft wrapover door trim panels	S	S	S
Carpeted lower door trim panels	S	NA	S
Front armrests with integral door pull handles	S	S	S
2-spoke steering wheel	S	NA	NA
4-spoke "soft feel" steering wheel†	O	S	S
Console	S	S	S
Day/night inside mirror	S	S	S
Inside hood release	S	S	S
Vinyl headliner and color-keyed sun visors with driver's side elastic retention band for small items	S	S	S
Cigarette lighter	S	S	S
Anti-theft door lock buttons	S	S	S
LH and RH door courtesy light switches	S	S	S
Liftgate ajar warning light	S	S	S
Light Group††	O	S	S
LH vanity mirrors with color-keyed trim	NA	O	S
Removable cargo cover, window shade type	S	S	S
Passenger assist handle	NA	NA	S
Interval windshield wipers	O	O	S
Electronic digital clock	O	O	S
Locking glove box††	O	O	S
Rear ashtray (two in GLX)	NA	S	S
Load floor carpet	S	S	S

* Optional knit vinyl trim also available. See "ESCORT INTERIORS" at left for trim summary.

** Includes dual front speakers.

† Available on L Series with Fingertip Speed Control only.

†† See Options Selector (Facing page) for package content. Locking glove box included with Appearance Protection Group.

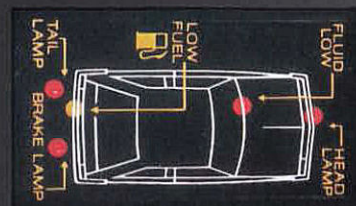
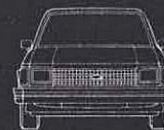
S = Standard O = Optional NA = Not Available

NOTE: In certain states, there may be variations in standard features. See your dealer for details.

FUEL ECONOMY

1983 EPA mileage estimates were not available at the time this catalog was approved for printing. However, Escort is expected to post good mileage

ratings as it did last year. As soon as EPA figures are released, your Ford Dealer will be among the first to receive this information and will be happy to pass it along to you.



Graphic Display Warning Module (Console)



Light Group

MEASUREMENTS

Wheelbase	94.2"
Length	165.0"
Height	53.3"
Width	65.9"
Front Tread	54.7"
Rear Tread	56.0"
Cargo Capacity (cu. ft.)	27.8/58.4*
Fuel Capacity (gal.)	13
Curb Weight (lb.)	2,117
Passengers	4

*First figure—rear seat up.
Second figure—rear seat down.

SCHEDULED MAINTENANCE

Ford wants to reduce the frequency and cost of scheduled maintenance on its cars to an absolute minimum. Here are some examples of scheduled maintenance intervals for the new Ford Escort. For complete maintenance recommendations, refer to the Ford Escort Owner Guide.

Engine Oil Change	each 7,500 miles
Spark Plug Change	each 30,000 miles
Air Filter Replacement	each 30,000 miles
Engine Coolant Replacement	each 30,000 miles or 3 years

LTD Squire Wagon in White.

LTD Wagon in Dark Academy Blue Metallic.



THE NEW LTD WAGON: HIGH STYLE AND RIDING COMFORT FOR FIVE.



LTD's optional Two-Way Liftgate. Swing the entire liftgate up — or just the window.

Brougham Decor Option in Academy Blue.



A convenient side storage compartment holds valuables you'd like to keep out of sight — and securely locked!



LTD WAGON DATA CENTER

OPTIONS SELECTOR

ENTERTAINMENT SYSTEMS

■ AM/FM Monaural Radio* ■ AM/FM Stereo Radio ■ AM/FM Electronic Stereo Search Radio. No mechanical tuning. Automatically seeks or scans stations with digital readout. ■ AM/FM Stereo Radio with Cassette Tape ■ AM/FM Electronic Stereo Search Radio with Cassette Tape ■ AM/FM Stereo Radio with 8-Track Tape ■ Premium Sound System.* Stereo radios only. Includes power amplifier and upgraded rear speakers.

NOTE: All stereo radios include dual rear seat speakers.

APPEARANCE

■ Squire Option. Includes woodtone rail surround including partial wheel lips, woodtone paneling on bodyside and liftgate. Deletes wide bodyside molding and bodyside paint stripes. ■ Tu-Tone Paint/Tape treatment.* Five Tu-Tone combinations: Silver Metallic/Medium Charcoal Metallic; Pastel Vanilla/Medium Vanilla; Light Academy Blue Glow/Dark Academy Blue Metallic; Desert Tan Glow/Walnut Metallic; Light Teal Glow/Dark Teal Metallic.

ASSISTS/ELECTRONIC DRIVING AIDS

■ Autolamp On/Off/Delay System. On the road, turns on headlights automatically at night, turns them off after sunrise. At home, provides an adjustable headlamp turn-off delay long enough to see you into the house. ■ Diagnostic Warning Lights. Signal "door ajar," "low washer fluid," "headlamps on," "low beam out," "brake lamp out," "tail lamp out" and "low fuel." ■ Electronic Instrument Cluster.* Includes digital speedometer, electronic "bar graph" fuel gauge, Electronic Digital Clock, MPH/KmPH conversion switch and unique black panel applique. ■ Tripminder® Computer.* Includes the features of the electronic digital clock plus readouts for: (1) trip average speed, (2) instantaneous distance per gallon, (3) trip average distance per gallon, (4) fuel used, English/metric conversion is also featured. ■ Fingertip Speed Control.* Includes luxury steering wheel.

COMFORT AND CONVENIENCE

■ SelectAir® Conditioner with Automatic Temperature Control ■ SelectAir Conditioner with manual control ■ Electronic Digital Clock ■ Tinted Glass (complete) ■ Light Group. Includes engine



Pivoting Front Vent Windows

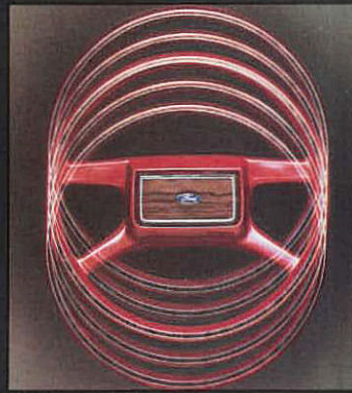
compartment light, dual-beam dome/map light, instrument panel courtesy lights. ■ Right-Hand Remote-Control Convex Mirror ■ Dual Illuminated Visor Vanity Mirrors ■ Automatic Parking Brake Release ■ Leather-Wrapped Steering Wheel* ■ Tilt Steering Wheel.* Includes luxury steering wheel. ■ Cornering Lamps ■ Electric Rear Window Defroster* ■ Illuminated Entry System. When door handle is raised, interior and door lock are lighted for about 25 seconds or until ignition is turned on. ■ Two-Way Liftgate.* See page 9. ■ Adjustable Luggage Rack* ■ Pivoting Front Vent Windows* ■ Interval Windshield Wipers* ■ Rear Window Wiper/Washer

INTERIORS

■ Brougham Decor Option. Includes 16-ounce carpeting; luxury cloth seat trim; luxury door trim panels with cloth inserts, pull straps and carpeted lower section; luxury steering wheel; Light Group; luxury luggage compartment trim, including spare tire cover; Electronic Digital Clock, right-hand illuminated visor vanity mirror; electronic chime and automatic parking brake release ■ Individual seats with console* ■ Leather trim.*

PERFORMANCE

■ 3.8 Liter V-6 Engine* ■ Automatic Overdrive Transmission.* Shifts into a fourth overdrive gear at approximately 40 mph, causing the engine to turn one-third more slowly and substantially improving highway fuel economy. ■ Traction-Lok Axle.* Under adverse operating conditions where one driving wheel could spin on ice, snow, sand or mud, the Traction-Lok automatically shifts some of the driving force, or torque, to the other wheel to take advantage of its greater traction.



Tilt Steering Wheel

■ Heavy-Duty Battery. ■ Cold Weather Group. Includes 54 amp-hr. heavy-duty battery, heavy-duty alternator and engine immersion heater. ■ High Altitude Emissions System.* ■ California Emissions System.*

PROTECTION

■ Lower Bodyside Protection ■ Front License Plate Bracket. No-cost option. For states which require front license plate. ■ Rear Bumper Guards ■ Bumper Rub Strips ■ Appearance Protection Group. Includes carpeted front floor mats, bright door edge guards (brown with Squire Option), license plate frame(s) ■ "Tot-Guard." For children 20 to 50 pounds. Infant Carrier for babies up to 20 lbs. Both carriers are available at your Ford Dealer.

POWER ASSISTS

■ Power Lock Group. Includes power door locks and power liftgate release. ■ Six-Way Power Driver's Seat ■ Power Seats. Six-way power for both driver and passenger. ■ Power-Assisted Rack and Pinion Steering ■ Power Side Windows.

TIRES

■ White Sidewall Tires, P185/75R14 or P195/75R14. Include mini-spare. ■ Puncture-Resistant, Self-Sealing Tires. WSWV. Include mini spare.

WHEELS/WHEEL COVERS

■ Luxury Wheel Covers ■ Wire Wheel Covers ■ Locking Wire Wheel Covers ■ Aluminum Wheels (4). Include antitheft locking lug nuts.

NOTABLE STANDARD FEATURES

ENGINEERING

3.3 liter 1 V 6-cyl. engine and SelectShift automatic transmissionS
Power front disc/rear drum brakesS
Rack and pinion steeringS
Modified MacPherson strut front suspension with gas-filled struts and front stabilizer barS
4-bar link coil-spring rear suspension with gas-filled shock absorbersS
Maintenance-free 36 amp-hr. batteryS
Electronic voltage regulatorS
P-metric steel-belted radial ply tiresS
Inside hood releaseS
Extensive sound insulationS
"Liftgate Open" warning lightS
Tinted liftgate glassS

EXTERIOR

Bright bumpers, grille and headlamp doorsS
Dual rectangular halogen headlampsS
Front bumper guardsS
Vinyl-insert bodyside molding with bright partial wheel lipsS
Dual accent paint stripes, bodyside and hoodS
Bright moldings: windshield, window frames, drip rail, belt, liftgate, and taillamp areaS
Deluxe wheel coversS
Left-hand remote-control mirrorS

INTERIOR

Split bench seat with individual reclinersS
Cloth seat trim and headrestsS
Cloth headlining and sun visorsS
Right-hand visor vanity mirrorS
Padded vinyl door trim panels with integrated front door storage binsS
Color-keyed cut-pile carpetingS
Deluxe color-keyed seat belts with comfort regulatorsS
Steering-column mounted controls for: turn signals, horn, windshield wipers/washer, and headlamp dimmerS
Flash-to-pass featureS
Trip odometerS
AM Radio with dual front speakers (may be deleted for credit)S
Cigarette lighterS
Locking glove boxS
Glove box and ashtray lightsS
Rear seat ashtrays (two)S
Rear door courtesy lamp switchesS
Fold-down rear seat with carpeting on seat backS
Carpeted cargo areaS
Lockable storage compartment in left rear quarter panelS
Cargo area lightS

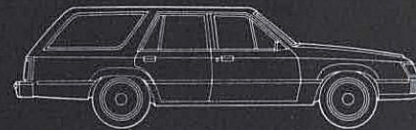
OPTIONS AVAILABILITY

1983 LTD options are not confined to these pages but are shown also on preceding pages. Options, whether or not they are identified, are offered at extra cost. Options designated by an asterisk (*) are offered either in combination with other options, or are subject to additional ordering requirements or limitations. Availability of some features described here and elsewhere

may be subject to delay.

GAS MILEAGE

1983 EPA mileage estimates were not available at the time this catalog was approved for printing. However, LTD is expected to post good mileage ratings. As soon as EPA figures are released, your Ford Dealer will be among the first to receive this information and will be happy to pass it along to you.



Tripminder® Computer



AM/FM Electronic Stereo Search Radio

MEASUREMENTS

Wheelbase 105.5"
Length 196.5"
Height 54.3"
Width 71.0"
Front Tread 56.6"
Rear Tread 57.0"
Cargo Area (cu. ft.) 75.4*
Fuel Capacity (gal.) 16.0
Curb Weight (lb.) 3,092
Passenger Capacity 5

*41.6 cu. ft. with rear seat up.

SCHEDULED MAINTENANCE

Ford wants to reduce the frequency and cost of scheduled maintenance on its cars to an absolute minimum. Here are some examples of scheduled maintenance intervals for the new Ford LTD. For complete maintenance recommendations, refer to the LTD Owner Guide.

Engine Oil Change each 7,500 miles
Spark Plug Change each 30,000 miles
Air Filter Replacement each 30,000 miles
Engine Coolant Replacement ... each 52,500 miles or 3 years (30,000 miles or 3 years with 3.8L V-6)

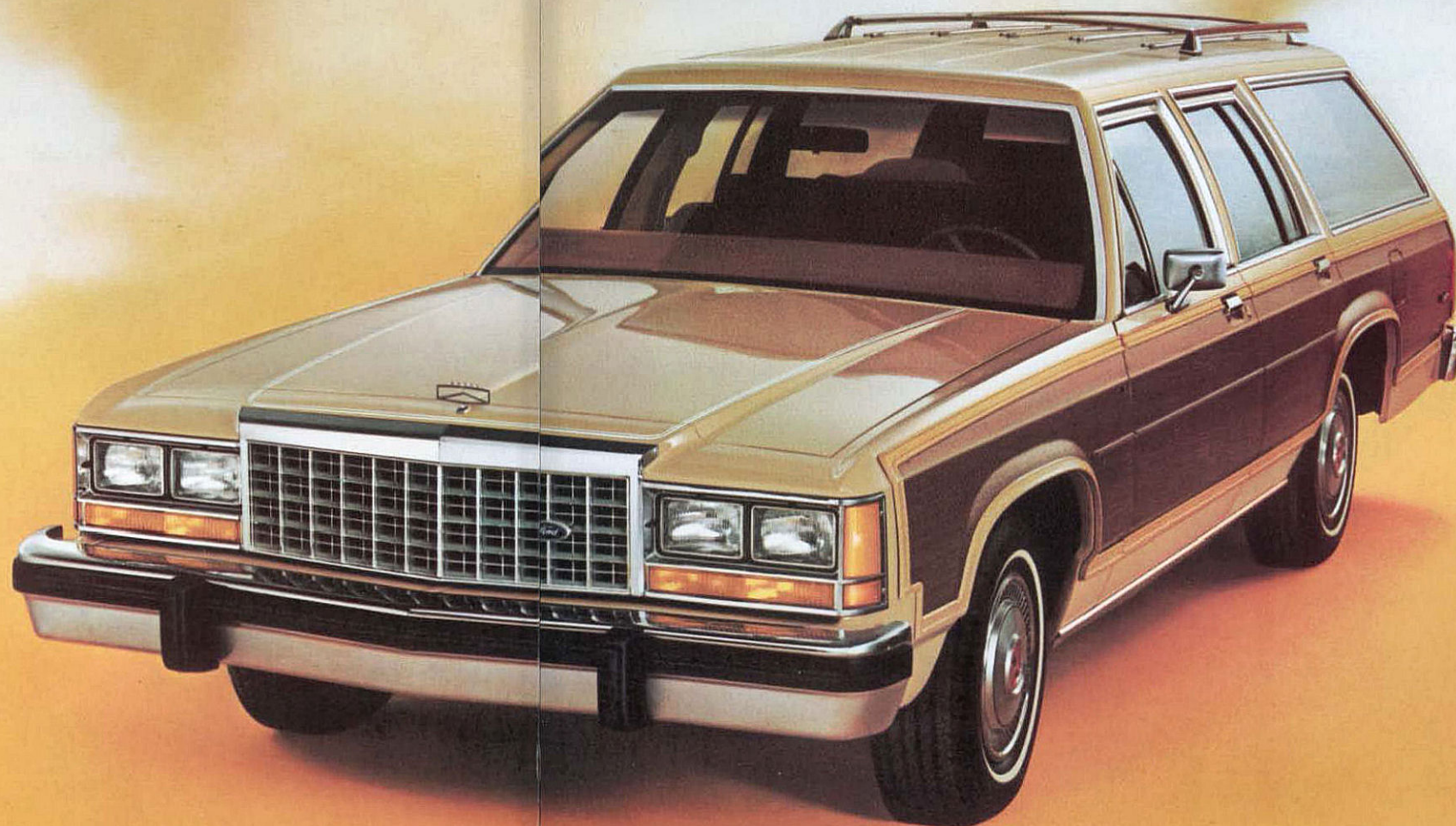


Equipped with the Heavy-Duty Trailer Towing Package, Country Squire can tow up to 5,000 lbs.

Optional dual facing rear seats increase seating capacity to eight.



The 3-Way Magic Doorgate opens like a door with the window up or down; or lowers like a tailgate.



THE 1983 FORD COUNTRY SQUIRE WAGON: SIX- OR EIGHT-PASSENGER LUXURY AND A QUIET RIDE.



Country Squire Wagon in Pastel Vanilla.

Country Squire Wagon in Medium Blue Glow.

FORD COUNTRY SQUIRE DATA CENTER

OPTIONS SELECTOR ENTERTAINMENT SYSTEMS

■ AM/FM Stereo Radio with Cassette Tape Player ■ AM/FM Stereo Radio with 8-Track Tape Player ■ Electronic AM/FM Stereo Search Radio. Precision tuning. Automatically seeks or scans stations with digital readout. ■ Electronic AM/FM Stereo Search Radio/Cassette Player. With Dolby® noise reduction system. ■ Electronic AM/FM Stereo Search Radio with 8-Track Tape Player ■ Premium Sound System. Includes six speakers and power amplifier. ■ Power Antenna

Note: All stereo systems include dual front and rear speakers.

APPEARANCE

■ Interior Luxury Group. Reclining split bench seats in elegant new velour or Super-Soft vinyl (genuine leather seating surfaces available at extra cost), seat back map pockets, luxury door trim panels with assist straps and full-length armrests with controls for power side windows, electronic digital clock, trip odometer, warning lights for "low fuel" and "low washer fluid." ■ Bright Rocker Panel Moldings ■ Metallic Glow Paint ■ Leather-Wrapped Luxury Steering Wheel

COMFORT

■ Select-Aire Conditioner—Manual or Automatic Temperature Control ■ Tinted Glass — Complete. Recommended with air conditioning. ■ Split Bench Seats. Include dual seat back recliners. ■ Dual Facing Rear Seats with easily removable seat cushions for added underfloor storage space. ■ DuraWeave Vinyl Trim. Looks, feels and breathes like cloth, yet cleans and wears like vinyl. Available with flight bench or split bench seats.

CONVENIENCE

■ Convenience Group. Includes interval windshield wipers, power doorgate lock, trip odometer, warning lights for "low washer fluid" and "low fuel." ■ Pivoting Front Vent Windows ■ Electronic Digital Clock ■ Electric Rear Window Defroster ■ Autolamp On/Off/Delay System. Electronic sensor turns headlamps on at night, off in daylight. Can be set to keep headlamps on for up to four minutes after parking the car. ■ Tripfinder® Computer. Displays the day of the week along with the day of the month and time. Gives distance traveled, trip average speed, trip average distance per gallon, instantaneous distance per gallon, fuel used, plus English/metric conversion of distance in either miles or kilometers, fuel in gallons or liters. ■ Front Cornering

Lamps. They conveniently light your way around corners at night. ■ Illuminated Entry System. Lifting either front door handle turns on interior lights and illuminates a ring around the door lock cylinder for about 20 seconds or until steering column is unlocked. ■ Light Group. Includes dual beam dome/map light, "headlamps on" warning chime, engine compartment light, dual instrument panel courtesy lights. ■ Fingertip Speed Control ■ RH Remote-Control Convex Mirror ■ Tilt Steering Wheel ■ Interval Windshield Wipers ■ Dual Illuminated Visor Vanity Mirrors ■ Deluxe Luggage Rack ■ Automatic Parking Brake Release ■ "Tot-Guard." For children weighing 20 to 50 pounds (shown). Infant Carrier also available for children weighing up to 20 pounds. Both carriers are available at your Ford Dealer.

PERFORMANCE

■ Traction-Lok Axle. Automatically shifts power to wheel with the most traction. ■ Heavy-Duty Suspension. Front and rear heavy-duty springs and shock absorbers. ■ Medium-Duty Trailer Towing Package. Required for towing trailers over 2,000 pounds and up to 3,500 pounds. See your dealer for content. ■ Heavy-Duty Trailer Towing Package. For trailers up to 5,000 pounds. See your dealer for content. ■ Engine Block Immersion Heater

POWER ASSISTS

■ Power Lock Group. Door locks, remote-control power doorgate lock. ■ 6-Way Power Seat. Available for driver seat or both driver and passenger seats. ■ Power Side Windows with lock-out feature

PROTECTION

■ Vinyl Insert Bodyside Moldings ■ Lower Bodyside Protection. Vinyl coating under the paint along the lower bodysides to protect against stone pecking and road salt. ■ Bumper Rub Strips ■ Protection Group. Brown door edge guards, color-keyed carpeted front and rear floor mats, license plate frame(s). ■ Remote-Control Locking Fuel Door

TIRES

■ Puncture-Resistant, Self-Sealing WSW Tires

(Note: see your dealer for available upsize tire options.)

WHEEL COVERS/WHEELS

■ Wire Wheel Covers (4) ■ Locking Wire Wheel Covers (4) ■ Luxury Wheel Covers (4) ■ Cast Aluminum Wheels (4) *



Fingertip Speed Control

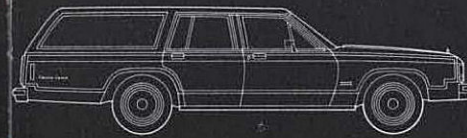


6-Way Power Seat

ALSO WELL WORTH CONSIDERING...



Ford Motor Company's optional Extended Service Plan covers major components on new Ford cars and light trucks for longer than the vehicle's basic warranty. The cost is so moderate for the protection you get that it could pay for itself the first time you need it. Your Ford Dealer will be happy to detail the plan for you. Available on all cars and most light trucks, it is honored by more than 6,500 Ford and Lincoln-Mercury dealers nationwide and in Canada.



NOTABLE STANDARD FEATURES

ENGINEERING

5.0 liter (302 CID) V-8 engine with electronic fuel injection	5
Automatic Overdrive transmission	5
Electronic voltage regulator	5
DuraSpark Electronic Ignition	5
Maintenance-free battery	5
Full coil spring suspension system	5
Power front disc/rear drum brakes	5
Power steering, variable ratio	5
P-metric WSW steel-belted radial ply tires on 6 1/2" wheels	5
Tiltaway door hinges	5
Concealed windshield wipers with fluidic washer system	5
Conventional spare tire	5
Spare tire extractor	5

EXTERIOR

Quad rectangular halogen headlamps	5
Chrome-plated grille	5
Chrome-plated front bumper, anodized rear bumper	5
Bumper guards, front and rear	5
LH remote-control mirror	5
Bright door belt, window frame and drip rail moldings	5
Bright tailgate surround and quarter window moldings	5
Accent stripes on hood	5
Deluxe wheel covers	5
3-Way Magic Doorgate with power window	5
Woodtone bodyside and doorgate paneling with fiberglass surround rails	5

INTERIOR

Flight bench seat with dual recliners and fold-down center armrest	5
All-vinyl seat trim	5
Deluxe door trim panels with carpeted lower section	5
Color-keyed deluxe belts with comfort regulators	5
Seat belt reminder chime	5
16-ounce luxury cut-pile carpeting	5
Cloth-covered headliner and sun visors	5
Luxury steering wheel	5
Woodtone instrument panel appliques	5
AM/FM stereo radio (may be deleted for credit)	5
Steering-column mounted controls for turn signals, headlamp high-beams, horn and windshield wipers/washer	5
Self-regulating quartz electric (sweep-hand) clock	5
Courtesy lights in glove box, front ashtray, cargo area with doorgate-actuated switch	5
Courtesy light switches on all doors	5
Day/Night rearview mirror	5
Antitheft door lock buttons	5
Fold-down rear seat	5
Removable color-keyed load floor carpet	5
Lockable storage compartments in load floor and left rear side panel	5
Super Luxury Sound Insulation Package	5

OPTIONS AVAILABILITY

1983 Ford LTD Country Squire options are not confined to these pages but are shown also on preceding pages. Options, whether or not they are identified, are offered at extra cost. Options designated by an asterisk (*) are offered either in combination with other options, or are subject to additional ordering requirements or limitations. Availability of some features described here and elsewhere may be subject to delay.

GAS MILEAGE ESTIMATES

1983 EPA mileage estimates were not available at the time this catalog was approved for printing. However, LTD Country Squire is expected to post good mileage ratings as it did last year. As soon as EPA figures are released, your Ford Dealer will be among the first to receive this information and will be happy to pass it along to you.



Illuminated Entry System



Tot-Guard

MEASUREMENTS

Wheelbase	114.3"
Overall Length	215.0"
Overall Height	56.8"
Overall Width	79.3"
Front Tread	62.2"
Rear Tread	62.0"
Cargo Space (cu. ft.)	89.4*
Fuel Capacity (gal.)	18.5
Curb Weight (lb.)	3,901
Passenger Capacity	6†

*Plus 9.9 cu. ft. in a lockable storage compartment below the load floor and 2.0 cu. ft. in a lockable side storage compartment. †Eight with optional dual facing rear seats.

SCHEDULED MAINTENANCE

Ford wants to reduce the frequency and cost of scheduled maintenance on its cars to an absolute minimum. Here are some examples of scheduled maintenance for the new Ford LTD Country Squire. For complete maintenance recommendations, refer to the Owner's Guide.

Engine Oil Change	each 7,500 miles
Spark Plug Change	each 30,000 miles
Air Filter Replacement	each 30,000 miles
Engine Coolant Replacement	each 52,500 miles or 3 years

**Buy or Lease . . .
A 1983 FORD WAGON
Go for a test drive today.**

**FORD-PAID REPAIR
PROGRAMS AFTER
THE WARRANTY
PERIOD**

Sometimes Ford offers adjustment programs to pay all or part of the cost of certain repairs. These programs are intended to assist owners and are in addition to the warranty or to required recalls. Ask Ford or your dealer about such programs relating to your Ford or Lincoln-Mercury vehicle.

To get copies of any adjustment program for your vehicle or the vehicle of interest to you:

Call Ford toll-free at
1-800-241-3673.

Alaska and Hawaii call
1-800-243-3711
and in Georgia call
1-800-282-0959.

Or write Ford at:
Ford Customer
Information System
Post Office Box 95427
Atlanta, Georgia 30347.

We'll need your name and address; year, make, and model vehicle, as well as engine size; and whether you have a manual or automatic transmission.

**TECHNICAL
SERVICE BULLETINS**

All vehicles need repairs during their lifetime. Sometimes Ford issues Technical Service Bulletins (TSBs) and easy-to-read explanations describing unusual engine or transmission conditions which may lead to costly repairs, the recommended repairs, and new repair procedures. Often a repair now can prevent a more serious repair later. Ask Ford or your dealer for any such TSBs and explanations relating to your Ford or Lincoln-Mercury vehicle.

To get copies of these Technical Service Bulletins and explanations for your vehicle or the vehicle of interest to you:

Call Ford toll-free at
1-800-241-3673.

Alaska and Hawaii call
1-800-243-3711
and in Georgia call
1-800-282-0959.

Or write Ford at:
Ford Customer
Information System
Post Office Box 95427
Atlanta, Georgia 30347.

We'll need your name and address; year, make, and model vehicle, as well as engine size; and whether you have a manual or automatic transmission.



Get it together — Buckle up.

014-Ann. 8/82 Litho in U.S.A.

FORD WAGONS

FORD DIVISION

