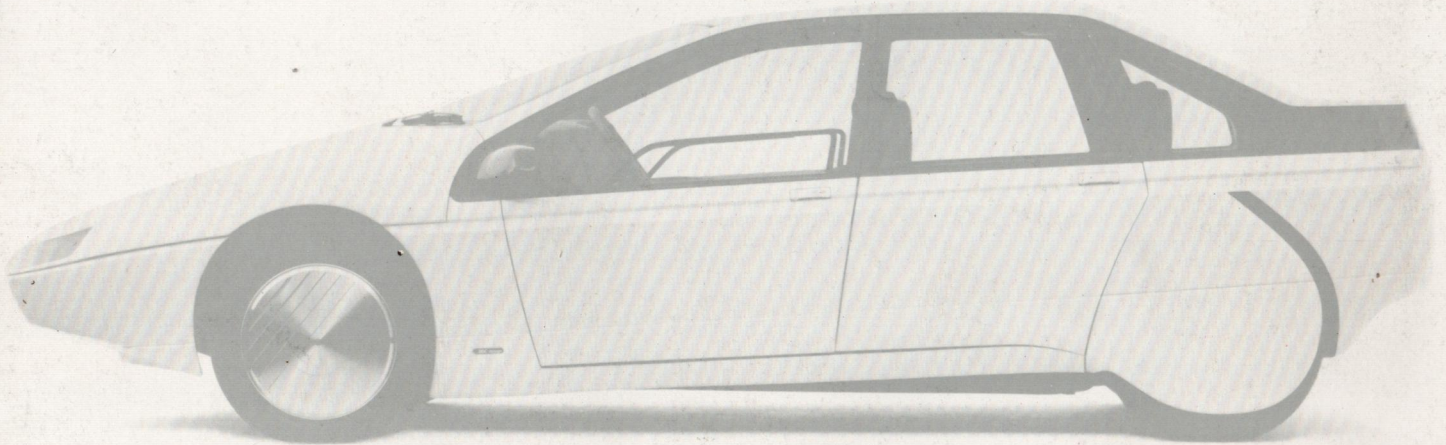


*A three-dimensional  
representation of  
ASC's capabilities in  
design, engineering  
and production.*

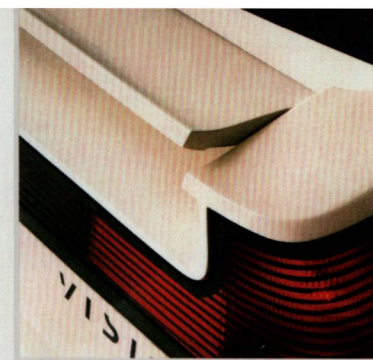




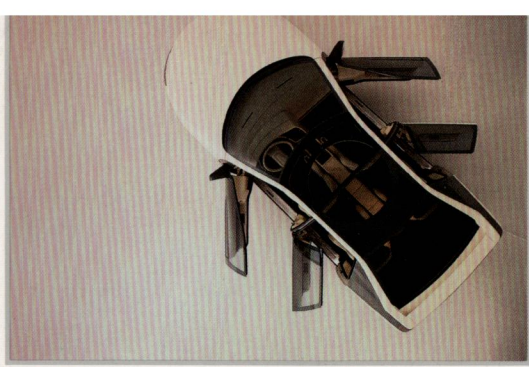
*Presenting a reflection of over two decades  
of design and engineering experience:*

*The Vision—a world-class show car that  
demonstrates the company's creativity,  
competence, and quality.*

*The car is the capability. The company, ASC.*



0021



**The car is  
the capability.**

State-of-the-art and fully functional, this idea car is not just another design exercise. It's not a prototype production model. Rather, it's the three-dimensional representation of ASC's capabilities in design, engineering, and production.

Vision, it has been said, is the art of seeing things invisible. And the Vision lets you do just that.

You can see the creativity and quality that have made ASC a recognized leader in international specialty automotive markets. You can feel the smooth lines and sophisticated styling that form an elegant functional design. And you can examine first-hand the unique perspective that has set ASC apart from other automotive

resources, both in the United States and throughout the world.

Through its two decades of experience and with facilities strategically located throughout North America, ASC has been able to anticipate and respond to changing tastes and styles—giving the auto buyer and the automaker (both domestic and import) excitement that sells.

To see a market need and fulfill it, especially in today's global market, takes a certain kind of Vision. And ASC has it.

- flush-mounted glass
- circular sunroof
- steel construction
- flexible urethane rear wheel skirts
- flush-mounted headlights
- aero wheels
- electrically controlled decklid spoiler
- lower rear spoiler
- high-performance 2.2-litre turbocharged engine
- three-speed automatic transmission
- unique parallelogram door hinges
- power-operated toll-gate windows
- white-leather bucket seats with ultramarine woven-cloth inserts
- on-board computerized climate-control system
- keyless entry system
- concealed fuel filler cap

#### Specifications

wheelbase	2540mm (100")
track front	1435mm (56.5")
track rear	1414mm (55.7")
overall length	4318mm (170")
overall width	1714mm (67.5")
overall height	1219mm (48")
front overhang	1130mm (44.5")
rear overhang	647mm (25.5")
weight	1288k (2840 lbs)
tires	VR, 205/55-16
engine	2.2 litre turbo, FI



**'Where Ideas  
Become Reality'**

**ASC Incorporated**  
One Sunroof Center  
Southgate, Michigan 48195  
(313) 285-4911  
TWX 810-231-9503

Operating companies:  
American Sunroof Company  
Automobile Specialty Company  
Aeromotive Systems Company