

# 1987 Ford Aerostar Van



## FORD AEROSTAR VAN FOR 1987

**BEST-BUILT AMERICAN TRUCKS  
SIX YEARS RUNNING**

"Quality is Job 1." In fact, for the past six consecutive years, Ford quality has led all other American automotive companies. This is based on an average of owner-reported problems in the first three months of service on '86 models, and in a six-month period on '81-'85 models designed and built in North America.

### THE RIGHT VAN FOR THE JOB

If you're looking for a hard-working van that's also economical\* to operate, Aerostar Van offers an impressive combination of attributes that makes it the right vehicle for so many job demands—around town or out on the highway.

Aerostar's designed to be maneuverable in city driving and in tight parking situations. And though it's small enough to fit easily into any regular passenger car garage, it offers a surprisingly large cargo area with an unobstructed, flat load floor. The standard

2.3 liter engine has port-type electronic fuel injection (V-6 available) and is teamed with an efficient 5-speed manual overdrive transmission—an attractively priced, economical\* powerteam. Built-Ford-tough Aerostar Van is ready to handle your cargo-hauling jobs with ease.



**Aerostar XL Van** features dual reclining cloth Captain's Chairs, interval wipers, electronic AM/FM stereo radio with clock and other interior and exterior refinements for an extra measure of comfort and convenience.



The standard **Aerostar Van** is well equipped for the job at hand. It's maneuverable, economical to operate\* and easy to load and unload. And it's designed to take cramped parking spaces in stride. The *right* van in so many ways.

### CONTENTS

Ford Aerostar Interior .....	4-5
Aerostar XL Van.....	6
Standard Aerostar Van.....	7
Aerostar Versatility.....	8-9
Ford Aerostar: The Technical Side .....	10-11
Preferred Equipment Packages .....	12-13
Options and Colors.....	14-15
Safety and Owner Benefits .....	16-17

Below: Aerostar XL Van in Colonial White.

Some equipment shown may be optional. See options list on page 15.

\*See Gas mileage, page 11.



**1987 Ford Aerostar Van** 

## DESIGNED TO BE FUNCTIONAL

### DRIVER COMMAND

Aerostar's forward compartment was arranged around the driver. The front bucket seats (passenger seat may be deleted) are designed for comfort and the computer-aided design of the instrument panel—with its strategic placement of controls and gauges—offers maximum driver convenience.

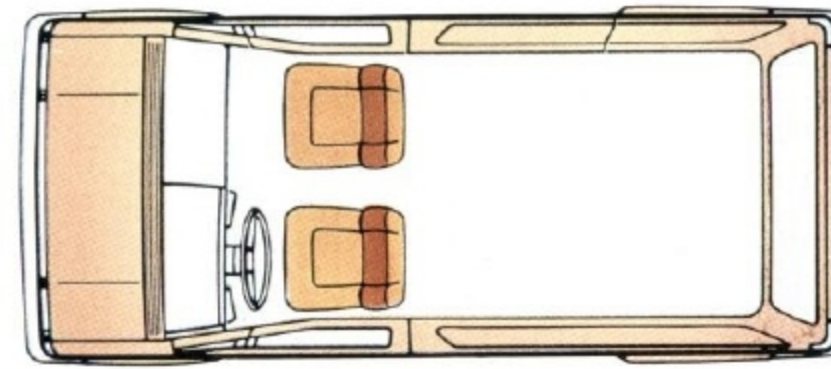
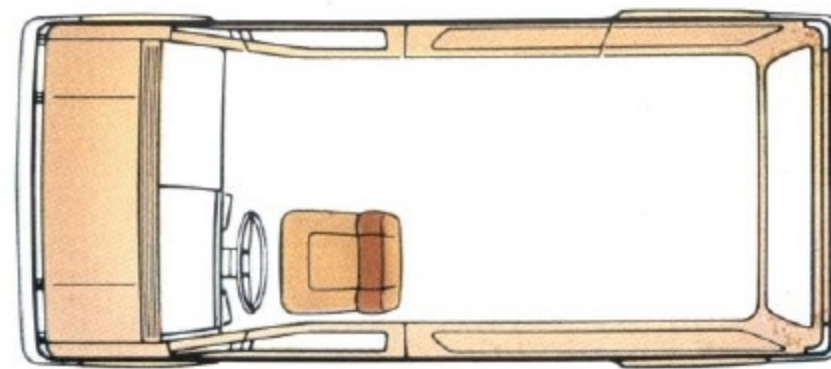
### LOAD IT UP

Aerostar's rear compartment was designed around the load. The large sliding side door is very handy for loading or unloading in tight places. In the rear, the easy-opening liftgate swings open to a cargo port 56.5 inches wide by 45.1 inches high with no step to get in the way. Inside, there's a convenient *flat* load floor and a full 140.3 cubic feet for cargo. The standard rear polypropylene floor liner helps protect the floor from nicks and scratches.



### BIG PAYLOADS

Payload capacity is important in a working vehicle like Aerostar. A 1,200-lb. capacity is standard, and certain Preferred Equipment Packages include a 1,620-lb. capacity (optional with others, see pages 13 and 15). The maximum 2,040-lb. package is optional with most Preferred Equipment Packages (see listing on page 15). That's big mini-van capability!



Two front bucket seats are standard (Captain's Chairs with XL). The standard van may also be ordered without the passenger seat.

Aerostar's standard easy-opening liftgate (left) opens to a full 84.8-inch height and reveals up to 140.3 cubic feet of cargo capacity.

Aerostar XL interior (right) and instrument panel (below) are shown in Chestnut. Some equipment shown may be optional. See options list on page 15.





## FORD AEROSTAR XL VAN

### TOP-OF-THE-LINE FEATURES

Aerostar XL's lower bodyside two-tone accent treatment, painted bodyside/liftgate pinstripes and deluxe styled steel wheels with trim rings highlight its exterior.

Inside, dual reclining cloth Captain's Chairs, carpeted engine cover, cloth-covered front headliner, full-length carpeting, leather-wrapped A-frame steering wheel, higher level trim and color-keyed components set the tone. Cloth-covered visors with sunglass straps and

vanity mirrors are included.

XL convenience extras include an electronic AM/FM stereo radio with handy clock, interval windshield wipers, courtesy lamp switches for all doors, tinted glass, cargo lamp and an instrument panel vanity panel with storage bin and locking glove box.

Above: Aerostar XL Van in Spinnaker Blue.

Right: Aerostar XL interior in Regatta Blue.

Some equipment shown may be optional. See options list on page 15.



## STANDARD FORD AEROSTAR VAN

### EQUIPPED FOR UTILITY WITH COMFORT

The standard Aerostar comes fully equipped for all sorts of van applications—personal or commercial. Its sleek lines are complemented by color-coordinated bumpers, argent styled steel wheels with bright hub covers, argent grille, dual aero foldaway mirrors, a liftgate window and tri-color wraparound taillamps.

The interior features low-back front bucket seats and a computer-designed, low-profile

instrument panel with soft-feel A-frame steering wheel. The color-keyed safety belts include a comfort regulator feature, and the door panels have full wrapover vinyl trim. A white front compartment headliner and driver/passenger sun visors are also standard.

Other standard features include an electronic AM radio with clock, day/night mirror, front compartment carpeting and rear black polypropylene floor liner, front dome lamp and driver's door courtesy light switch.

Note: The passenger seat, liftgate window, radio and front carpeting may be deleted for credit. A rubber mat replaces the carpeting if deleted.

Above: Standard Aerostar Van in Silver Clearcoat Metallic.  
Right: Standard Aerostar interior in Regatta Blue.



## THE VERSATILE WORLD OF FORD AEROSTAR

Aerostar Van was designed to be versatile as well as capable. The addition of special toolboxes, shelving, equipment racks—even recreational outfitting—transforms Aerostar into a most personal, customized mini-van, anything from a delivery vehicle to a repair shop on wheels.

Whether you're in business or not, you want a van that's economical to operate. Aerostar's standard 2.3 liter EFI 4-cylinder engine and 5-speed manual overdrive transmission offer good fuel efficiency\* along with an attractive purchase price.

The most aerodynamic of domestic mini-vans, Aerostar is efficient on the inside, too. The standard 1,200-lb. payload capacity (1,620 lbs. optional or included with certain Preferred Equipment Packages) can be increased to an optional 2,040 lbs.—over a full ton. And powered by the optional V-6 engine and properly equipped, Aerostar can tow trailers weighing up to 4,700 pounds.\*\*

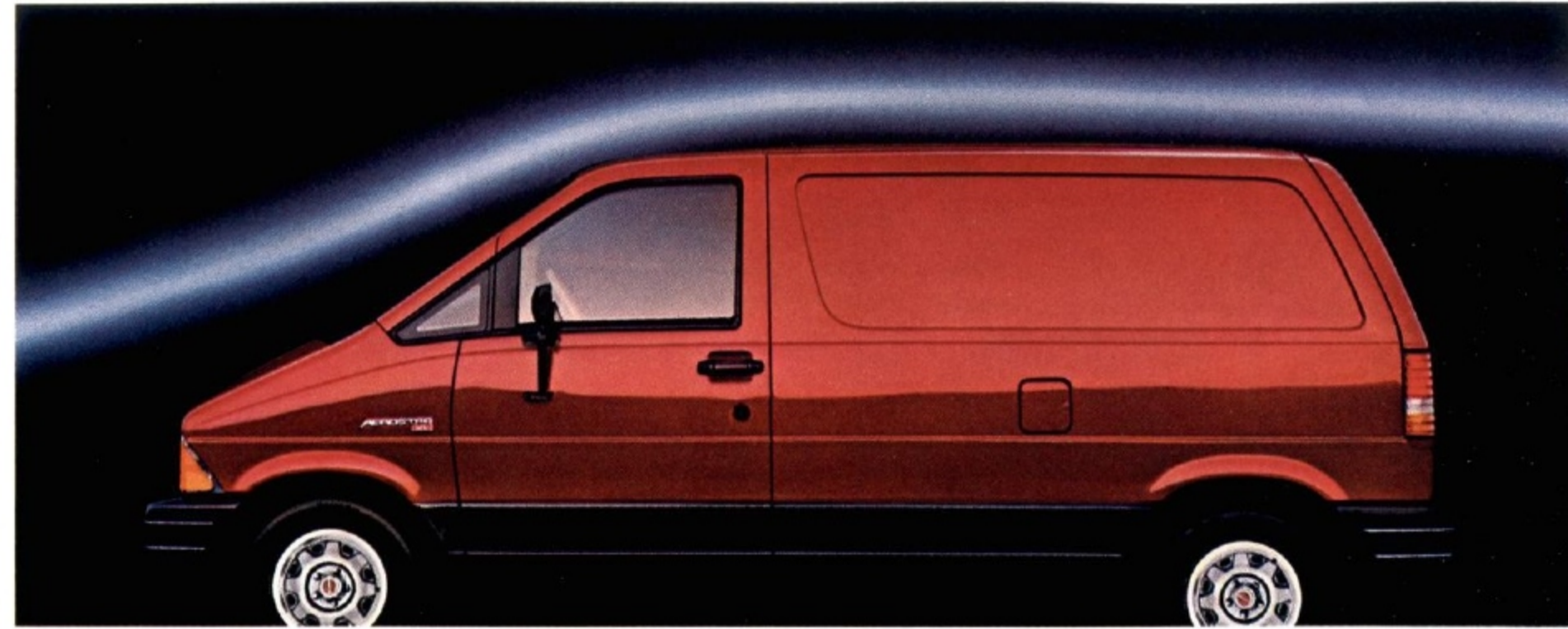
People who are familiar only with large vans will be surprised to see how much material Aerostar can hold. Yet it fits neatly into the garage. Plumbing, electrical work, construction, delivery applications—Aerostar fits the job in so many ways.

\*See Gas mileage, page 11.

\*\*Reduced by passenger and cargo weight in the towing vehicle.

Right: Aftermarket Aerostar recreational conversion.

Some equipment shown may be optional. See options list on page 15.





## FORD AEROSTAR: THE TECHNICAL SIDE

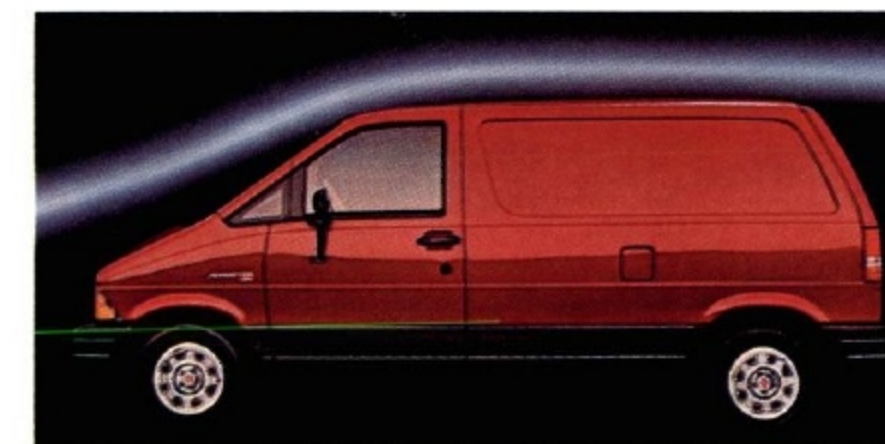
### ENGINEERING A HIGH-QUALITY VAN

Ford engineers have gone to great lengths, applying their expertise and employing the latest advancements in computer-assist design technology, to make Aerostar a high-quality mini-van.

Well before the first Aerostar prototype was built, Ford engineers were putting the vehicle through maneuvers on a computer screen, using Total Vehicle Simulation to study ride quality and handling response. This technology allows the engineers to determine vehicle design based on concrete data.

### AN EFFICIENT DESIGN

Driving in the 80's demands functional design. Aerostar's sleek lines are as efficient as they are appealing. The dynamic shape contributes to good fuel economy (see GAS MILEAGE, right), reduced wind noise and improved handling at highway speeds. In fact, Aerostar's .37 coefficient of drag is the best of all domestic mini-vans.



### AEROSTAR'S RIDE QUALITY

Generally speaking, the longer the wheelbase a vehicle has, the better the ride. Even though Aerostar is shorter overall than other mini-vans, it offers the longest wheelbase. But there's another comfort factor. Aerostar uses twin-tube, gas-pressurized shock absorbers. A low-pressure charge of inert nitrogen gas suppresses foaming of the hydraulic fluid due to rapid bumps or similar agitation. The result is a smooth ride under normal circumstances, yet a firm enough ride for rough road conditions.

Left: Aerostar XL Van in Light Chestnut Clearcoat Metallic. Some equipment shown may be optional. See options list on page 15.

### 4-CYLINDER POWER

Aerostar's standard, fuel-efficient 2.3 liter 4-cylinder engine features multi-port electronic fuel injection (EFI) and an overhead cam design. The major advantage of fuel injection over carbureted systems is that it uses fuel more efficiently. This is accomplished by the precise high-pressure injection of the fuel near each cylinder intake port. The engine is also monitored by the EEC-IV computer to optimize power, response and efficiency.

### V-6 POWER

The 3.0 liter V-6 engine (included with many Aerostar Preferred Equipment Packages) is one of the most powerful engines to be found in a compact vehicle like Aerostar. This efficient powerplant includes port-type fuel injection and delivers 145 horsepower at 4,800 rpm and 165 lbs.-ft. of torque at 3,600 rpm (based on SAE standard J1349). Extra power for tough duty.

### FUEL-SAVING TRANSMISSIONS

In addition to the standard 5-speed manual overdrive transmission, Ford's innovative 4-speed Automatic Overdrive transmission is optional with the 3.0 liter V-6 engine. It improves fuel economy by eliminating torque converter slip by applying the converter clutch

at highway cruising speeds in the upper range of third gear and in fourth gear, thereby reducing engine speed.

### GAS MILEAGE

EPA mileage ratings for the 1987 Aerostar were not available at the time this catalog was approved for printing. As soon as EPA figures are released, your Ford Dealer will be among the first to receive this information and will be happy to pass it along to you.

### BIG TOWING CAPABILITY

The advantage of rear-wheel drive is important when it comes to hauling loads and/or towing trailers. Because the driving wheels are in the rear, *under the load*, a V-6-powered and properly equipped Aerostar can tow trailers weighing up to 4,700 pounds.\* That's an impressive towing capability for a compact vehicle like Aerostar.

\*Reduced by passenger and cargo weight in the towing vehicle.



## PREFERRED EQUIPMENT PACKAGES

### AN EASY WAY TO BUY

The Aerostar Van pictured at left illustrates Aerostar's high level of standard equipment. Included is Preferred Equipment Package 420A.

#### AEROSTAR VAN STANDARD FEATURES (INCLUDING PREFERRED EQUIPMENT PACKAGE 420A):

- 2.3 liter 4-cylinder engine
- 5-speed manual overdrive transmission
- Power front disc/rear drum brakes
- Power rack and pinion steering
- P185/75Rx14SL all-season tires
- 1200-lb. Payload Package
- Light argent grille
- Color-coordinated bumpers
- Liftgate window (may be deleted for credit)
- Dual aero foldaway mirrors
- Tri-color wraparound taillamps
- Argent styled steel wheels/bright hub covers
- Low-back vinyl bucket seats (passenger seat may be deleted for credit)
- Color-keyed safety belts with comfort regulators
- Front compartment 16-oz. charcoal carpeting (may be deleted for credit and replaced by rubber mat)
- White front compartment headliner with driver/passenger sun visors
- Black rear polypropylene floor liner
- Full wrapover, color-keyed vinyl door trim panels
- Driver's door courtesy light switch
- Color-keyed soft-vinyl steering wheel
- Electronic AM radio with clock (may be deleted for credit)
- Day/night rearview mirror
- Front dome lamp

Left: Standard Aerostar Van in Deep Shadow Blue Clearcoat Metallic.

**Preferred equipment packages** are groups of popular features. By combining them into groups, we simplify the ordering procedure. All you have to do is 1) decide on the model (Cargo or Window Van), 2) choose your trim level (XL or Standard), and 3) select the Preferred Equipment Package from the chart below that includes the features you want.

For instance, if you decide on a Standard Aerostar Cargo Van, you can choose to have it equipped with one of four Preferred Equipment Packages numbered 420A, 422A, 424A and 426A. Package 420A is the standard Aerostar,

which by itself is a well-equipped vehicle (detailed on page 7). Package 422A adds a group of features which includes: tinted glass, interval wipers and outside swingaway mirrors. Package 424A adds the 3.0 liter V-6 engine. Package 426A adds the Convenience Group and speed control/tilt steering wheel.

At this point, if you would like to further personalize your new Aerostar, refer to page 15, find the Preferred Equipment Package number under Cargo Van and select from the options listed under it.

AEROSTAR VAN	PREFERRED EQUIPMENT PACKAGES				
	Cargo Van				Window Van
	420A	422A	424A	426A	430A
2.3 liter 4-cylinder engine	•	•			•
3.0 liter V-6 engine			•	•	•
5-speed manual overdrive	•	•		•	•
Power rack and pinion steering	•	•	•	•	•
P185/75Rx14SL all-season tires	•	•			
P195/75Rx14SL all-season tires			•	•	•
1,200-lb. Payload Package	•	•			
1,620-lb. Payload Package			•	•	•
Sliding side door and opposite bodyside windows					•
Low-back front vinyl bucket seats (passenger seat may be deleted for credit)	•	•	•	•	•
Front compartment 16-oz. charcoal carpeting <sup>(1)</sup>	•	•	•	•	•
Black rear polypropylene floor liner	•	•	•	•	•
Full wrapover, color-keyed vinyl door trim panels	•	•	•	•	•
Electronic AM radio with clock <sup>(2)</sup>	•	•	•	•	•
Tinted glass		•	•	•	•
Interval wipers			•	•	•
Black outside swingaway mirrors		•	•	•	•
Convenience Group <sup>(3)</sup>				•	
Speed control/tilt steering wheel				•	

AEROSTAR XL VAN	PREFERRED EQUIPMENT PACKAGES	
	Cargo Van	Window Van
	428A	432A
3.0 liter V-6 engine	•	•
5-speed manual overdrive	•	•
Power rack and pinion steering	•	•
P195/75Rx14SL tires	•	•
1,620-lb. Payload Package	•	•
Bright grille	•	•
Painted bodyside/liftgate pinstripes	•	•
Two-tone accent on lower bodyside	•	•
Dual cloth reclining Captain's Chairs with inboard armrests	•	•
Leather-wrapped steering wheel	•	•
Electronic AM/FM stereo radio with clock	•	•
Tinted glass	•	•
Interval wipers	•	•
Convenience Group <sup>(3)</sup>	•	•
Light Group <sup>(4)</sup>	•	•
Fixed liftgate window	•	•
Speed control/tilt steering wheel	•	•
Sliding side door and opposite bodyside windows		•

<sup>(1)</sup> May be deleted for credit and replaced by black rubber mat. <sup>(2)</sup> May be deleted for credit. <sup>(3)</sup> Includes courtesy light switches (all doors), cargo lamp, instrument panel lower vanity panel with storage bin, locking glove box and color-coordinated cowl side trim panels. <sup>(4)</sup> Includes underhood, glove box, front reading, ashtray and under instrument panel lamps. Also includes headlamp-on warning and illuminated entry.

# 1987 Ford Aerostar Van

## PERSONALIZED OPTIONS

In addition to the Preferred Equipment Packages, Aerostar Van offers a range of individual options which allow you to equip your vehicle even more to your particular needs.

Once you've chosen the model, series and Preferred Equipment Package you desire, find your Preferred Equipment Package number in the chart on page 15, then choose from the options listed under it.

Options and their availability are subject to change during the year. Some options may be subject to ordering restrictions. Your Ford Dealer can give you complete details.

Following are descriptions of selected options that may be of particular interest to you.

### SUPER SOUND SYSTEM

This special sound system (shown at right) is available with XL Vans and provides concert hall-like fidelity through its six premium sound speakers. It includes the electronic AM/FM stereo radio with cassette tape player and clock. Dolby® noise reduction (cassette) and a 7-band graphic equalizer are also featured.

### SPEED CONTROL AND TILT STEERING WHEEL

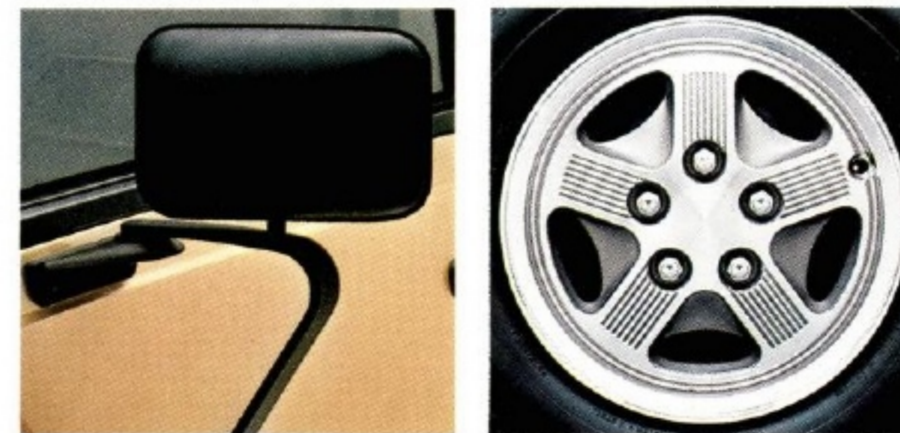
Two popular options in one (shown at right). Speed control buttons are positioned for easy operation while keeping both hands on the steering wheel. The handy tilt wheel facilitates entry and exit, adjusts for driving comfort.

### AUTOMATIC OVERDRIVE TRANSMISSION

The optional 4-speed Automatic Overdrive transmission (shown at right) improves fuel economy. It's described on page 11.



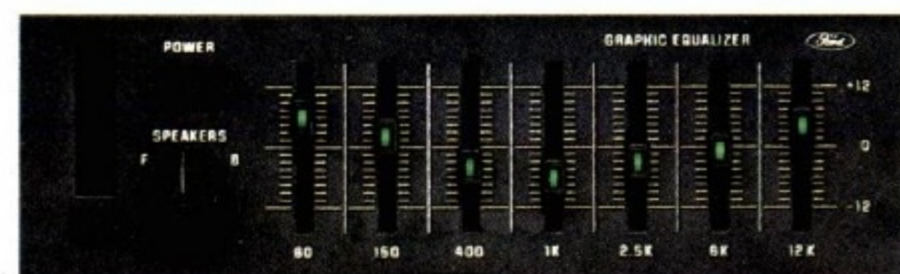
Heated rear window defroster and wiper/washer



Outside swingaway mirrors    Styled wheel covers



AM/FM stereo radio with cassette, Super Sound System



Graphic equalizer, Super Sound System

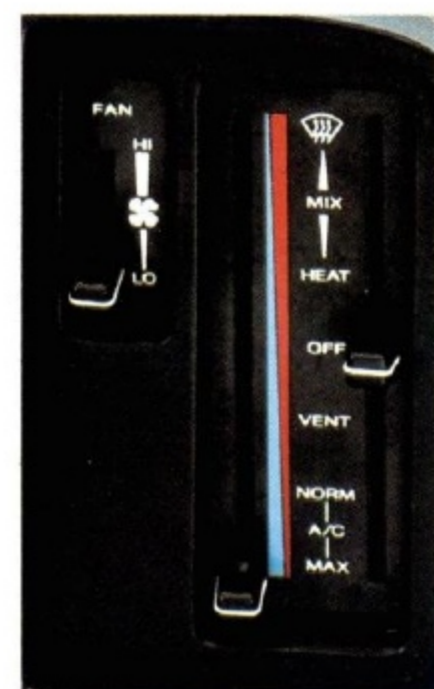


Speed control/  
tilt steering wheel

Automatic Overdrive  
transmission



**TWO-TONE PAINT**  
Two-Tone Lower Bodyside Accent Treatment (standard on most XL Van models).



Air conditioning

■ = Optional    ● = Included in equipment package (see page 13 for additional standard features)

AEROSTAR VAN	PREFERRED EQUIPMENT PACKAGES				
	Cargo Van				Window Van
	420A	422A	424A	426A	430A
Automatic Overdrive transmission	■	■	■	■	■
Power rack and pinion steering	■	■	■	■	■
Tinted glass	■	■	■	■	■
1,620-lb. Payload Package <sup>(1)</sup>	■	■	■	■	■
2,040-lb. Payload Package <sup>(2)</sup>	■	■	■	■	■
Limited-slip rear axle	■	■	■	■	■
Heavy-duty battery	■	■	■	■	■
Cloth seat trim	■	■	■	■	■
Air conditioning	■	■	■	■	■
"Supercool" radiator cooling	■	■	■	■	■
Electronic AM/FM stereo radio w/clock	■	■	■	■	■
Electronic AM/FM stereo radio with cassette tape player and clock	■	■	■	■	■
Black outside swingaway mirrors	■	■	■	■	■
Underbody spare tire carrier	■	■	■	■	■
Engine block heater	■	■	■	■	■
California Emissions System	■	■	■	■	■
Side door fixed window	■	■	■	■	■
Heated rear window defroster, wiper/washer	■	■	■	■	■
Speed control/tilt steering wheel	■	■	■	■	■
High Altitude Emissions System	■	■	■	■	■
Trailer Towing Package <sup>(3)</sup>	■	■	■	■	■
Styled wheel covers	■	■	■	■	■

AEROSTAR XL VAN	PREFERRED EQUIPMENT PACKAGES	
	Cargo Van	Window Van
	428A	432A
Automatic Overdrive transmission	■	■
Air conditioning	■	■
"Supercool" radiator cooling	■	■
Heated rear window defroster and wiper/washer	■	■
Speed control/tilt steering wheel	■	■
Underbody spare tire carrier	■	■
2,040-lb. Payload Package <sup>(2)</sup>	■	■
Trailer Towing Package <sup>(3)</sup>	■	■
Electronic AM/FM stereo radio with cassette tape player and clock	■	■
Super Sound System <sup>(4)</sup>	■	■
Engine block heater	■	■
Heavy-duty battery	■	■
Limited-slip rear axle	■	■
California Emissions System	■	■
High Altitude Emissions System	■	■
Side door fixed window	■	■
Styled wheel covers	■	■

(1) Includes power steering and P195/75R14SL BSW all-season tires. (2) Includes power steering and P205/75R14SL all-season tires. (3) Includes "Supercool" radiator, wiring harness, heavy-duty flasher and limited-slip rear axle. (4) Includes electronic AM/FM stereo radio with cassette tape player and clock, six premium speakers and graphic equalizer.

## COLOR SELECTIONS

Exterior Paint Colors	Interior Trim Colors		
	Medium Grey	Regatta Blue	Chestnut
Raven Black	X		X
Medium Red	X		X
Spinnaker Blue		X	
Colonial White	X	X	X
Light Chestnut			X
Silver Clearcoat Metallic	X	X	
Dark Cabernet Clearcoat Metallic	X		X
Light Chestnut Clearcoat Metallic			X
Bright Regatta Blue Clearcoat Metallic	X	X	
Deep Shadow Blue Clearcoat Metallic*	X	X	
Shadow Grey Clearcoat Metallic	X		
Dark Walnut Clearcoat Metallic*			X

\*See your dealer for available two-tone paint combinations.

Some of these paint colors are shown in this catalog. On the printed page, of course, colors are at best only representative of the originals. Your Ford Dealer can show you actual samples of the paint colors presented above.

Raven Black	Medium Red
Spinnaker Blue	Colonial White
Light Chestnut	Silver Clearcoat Metallic
Dark Cabernet Clearcoat Metallic	Light Chestnut Clearcoat Metallic
Bright Regatta Blue Clearcoat Metallic	Deep Shadow Blue Clearcoat Metallic
Shadow Grey Clearcoat Metallic	Dark Walnut Clearcoat Metallic

## SAFETY AND OWNER BENEFITS

### THE FORD QUALITY COMMITMENT

The Ford Quality Commitment is built on a basic and simple concept: Integrity. Integrity in the way we build our products, integrity in our dealerships' service and integrity in the treatment of our customers.

### TOGETHER WE CAN SAVE LIVES

Ford Motor Company strongly encourages all passengers to use their safety belts.

In Aerostar Van, front seat lap and shoulder belts have automatic retractors.

Ford urges the use of child and infant restraints, as required by law in all states. Ford's easy-to-install Tot-Guard (for children 20 to 50 pounds) and Infant Carrier (for children up to 20 pounds) are available at all Ford Dealers. If a child restraint requires a top-tether, Ford vehicles provide special anchorages.



### FORD LIFEGUARD DESIGN SAFETY FEATURES

#### Vehicle Operation

- Split service hydraulic brake system with warning light
- Corrosion-resistant brake lines
- Turn indicator lever with lane-changing signal feature
- Hazard warning flasher
- Backup lights
- Side marker lights
- Parking lights coupled with headlamps
- Two-speed windshield wipers
- Windshield washers
- Dual outside rearview mirrors
- Glare-reduced instrument panel, windshield wiper arms and windshield pillars
- Uniform transmission shift quadrant with safety starting switch (on all vehicles equipped with automatic transmission)
- Continuously variable control illumination intensity (instrument cluster lighting)
- Safety hood latch system
- Responsive windshield defroster system
- Tamper-resistant (non-reversing) odometer
- Speedometer with highlighted 55 mph (on vehicles with analog speedometer)

#### Occupant Protection

- Safety-designed front end structure
- Safety-designed roof structure
- Two-position door safety latches
- Integral lap and shoulder belts with automatic retractors for outboard occupants
- Positive safety belt fastening reminder warning light and buzzer or chime for the driver's seat
- Energy-absorbing steering column and steering wheel
- Energy-absorbing armrests and safety-designed door handles
- Energy-absorbing instrument panel with padding for front passenger
- Energy-absorbing sun visors
- Safety glove box latch



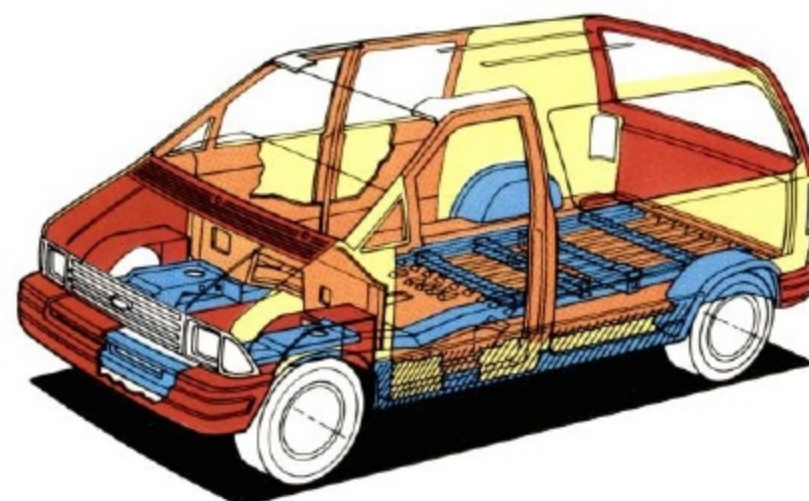
- Inside yieldaway rearview mirror
- Impact-absorbing laminated safety glass windshield
- Flame-resistant interior materials
- Safety-designed coat hook
- Safety-designed radio control knobs and push buttons

#### Anti-Theft

- Locking steering column with key warning buzzer or chime (with "Park" interlock or push button for key release)
- Visible vehicle identification number

### CORROSION PROTECTION

The extensive use of galvanized steel, special applications of aluminized wax and urethane spray protect Aerostar from corrosion agents such as road salt. The hood, cowl top grille, liftgate and front and rear bumper fascias are plastic and can never rust.



- Two-sided galvanized steel
- One-sided galvanized steel
- Differentially coated two-sided galvanized steel
- Urethane spray
- Plastic

### UNIPRIME SYSTEM

The "Uniprime" primer system is a high-build cathodic electrocoat body primer material with higher film thickness than similar conventional processes. It offers excellent corrosion protection, good paint adhesion and paint coverage in hard-to-reach areas and is just one of 15 different operations required to prepare the body for painting. Enamel is then applied by automated sprayers, minimizing runs, drips and thin coverage. The result: a lasting, superior paint finish.

Clearcoat Metallic paint, a special high-luster finish, is achieved by applying a final "clear" coat of acrylic enamel over the "color" coats for a long-lasting, deep, glossy look.



Participating Ford Dealers are now offering the Lifetime Service Guarantee, which guarantees their work on your Ford vehicle for as long as you own it. This means that the covered repair is paid for once — and never again. If it ever has to be fixed again, the repairing dealer will fix it free. Free parts. Free labor. Even if the vehicle is kept a lifetime. It doesn't matter where it was purchased, or whether it's new or used; the work is still covered by the repairing dealer.

This limited warranty covers vehicles in normal use. Items not covered include routine maintenance parts, belts, hoses, sheet metal, and upholstery. Ask to see this guarantee when you visit your participating Ford Dealer.



The optional Ford Extended Service Plan covers major components on new Ford cars and trucks for longer than the vehicle's basic warranty. The cost for this added protection is so moderate that it could pay for itself the first time you need it. Your Ford Dealer has full details.



Ford Motor Credit Company is interested in helping to fill the transportation needs of every qualified buyer of a Ford product. A participating dealer can arrange financing terms or a Red Carpet Lease® tailored to your circumstance. Ford Credit has offices conveniently located throughout the United States.



Genuine Ford and Motorcraft original equipment replacement parts meet the same high standards as those installed in production. They are your best assurance of quality and long-term satisfaction.

### SCHEDULED MAINTENANCE

Here are some examples of scheduled maintenance intervals for the 1987 Ford Aerostar. For complete maintenance recommendations, refer to the Aerostar Maintenance Schedule Booklet.

Engine oil and filter change	.....each 7,500 miles (or 6 months)
Spark plug change	.....each 30,000 miles
Air filter replacement	.....each 30,000 miles
Engine coolant replacement	.....each 30,000 miles (or 3 years)

### FORD-PAID REPAIR PROGRAMS AFTER THE WARRANTY PERIOD

Sometimes Ford offers adjustment programs to pay all or part of the cost of certain repairs. These programs are intended to assist owners and are in addition to the warranty or to required recalls. Ask Ford or your dealer about such programs relating to your Ford or Lincoln-Mercury vehicle.

To get copies of any adjustment program for your vehicle or the vehicle of interest to you: Call Ford toll-free at 1-800-241-3673. Alaska/Hawaii call 1-800-241-3711 and in Georgia call 1-800-282-0959.

Or write Ford at:  
Ford Customer Information System  
Post Office Box 95427  
Atlanta, Georgia 30347

We'll need your name and address; year, make and model vehicle, as well as engine size; and whether you have a manual or automatic transmission.

### TECHNICAL SERVICE BULLETINS

All vehicles need repairs during their lifetime. Sometimes Ford issues technical service bulletins (TSBs) and easy-to-read explanations describing unusual engine or transmission conditions which may lead to costly repairs, the recommended repairs, and new repair procedures. Often a repair now can prevent a more serious repair later. Ask Ford or your dealer for any such TSBs and explanations relating to your Ford or Lincoln-Mercury vehicle.

To get copies of these technical service bulletins and explanations for your vehicle or the vehicle of interest to you: Call Ford toll-free at 1-800-241-3673. Alaska/Hawaii call 1-800-241-3711 and in Georgia call 1-800-282-0959.

Or write Ford at:  
Ford Customer Information System  
Post Office Box 95427  
Atlanta, Georgia 30347

We'll need your name and address; year, make and model vehicle, as well as engine size; and whether you have a manual or automatic transmission.

### OPTIONS AVAILABILITY

Options shown or described in this catalog are available at extra cost and may be offered only in combination with other options and subject to additional ordering requirements or limitations.

### PRODUCT CHANGES

Ford Division reserves the right to change product specifications at any time without incurring obligations.

### MEASUREMENTS

(In inches unless otherwise indicated)

<b>EXTERIOR</b>	
Overall Length	.....174.9
Overall Width	.....71.7
Overall Height	.....72.9
Wheelbase	.....118.9
Front Tread	.....61.5
Rear Tread	.....60.0
<b>FRONT COMPARTMENT</b>	
Head Room	.....39.5
Leg Room	.....41.0
<b>REAR COMPARTMENT</b>	
Cargo Length at Floor	.....86.0
Cargo Width at Floor	.....64.5
Cargo Width at Wheelhouse	.....48.2
Maximum Cargo Height	.....47.9
Cargo Floor to Ground	.....25.8
Cargo Volume (cu. ft.)*	.....140.3
Standard Payload (lbs.)	.....1,200
Maximum Payload (lbs.)	.....2,040
Maximum Trailer Towing (lbs.)	.....4,700
Fuel Capacity (gallons)	.....17.0

\*171.2 cu. ft. without right-hand passenger seat.

### "ASK YOUR FORD DEALER"

Following publication of this catalog, certain changes in standard equipment, options, prices and the like, or product delays, may have occurred which would not be included in these pages. Your Ford Dealer is your best source for up-to-date information.

### BUY OR LEASE A NEW FORD AEROSTAR

**BUY OR LEASE  
A NEW FORD AEROSTAR**



FDT-8718 Litho in U.S.A. 8/86