

# 1987 Ford Aerostar Wagon





## FORD AEROSTAR WAGON FOR 1987

### FOR FAMILIES ON THE MOVE

Aerostar's popularity indicates that more and more people are recognizing what a versatile, comfortable and stylish vehicle it is. The most aerodynamic of domestic mini-vans, Aerostar offers maneuverability, sedan-like comfort and convenience yet seats up to seven adults.\* And the rear seat(s) can be easily removed to make room for cargo.

Aerostar fits the bill for so many often-encountered situations—shopping, towing, hauling, camping, taking the gang to the football game, or just having a quiet night out. Whether you drive the standard model, the XL or the top-of-the-line XLT, you'll be driving what may be the finest expression of the mini-van concept—Ford Aerostar.

\*Five-passenger seating is standard, seven-passenger seating available with certain Preferred Equipment Packages. See page 13 for details.



**Aerostar XLT** puts the premium on comfort and convenience with its richly trimmed interior. It's the flagship of the Aerostar fleet.



**Aerostar XL** adds several appreciated extras to the long list of features provided by the standard model, including cloth front Captain's Chairs and lower two-tone accent paint.



**Standard Aerostar** comes equipped for your driving and riding pleasure with standard features which are commonly optional.

### CONTENTS

Ford Aerostar Interior .....	4-5
Ford Aerostar XLT .....	6
Ford Aerostar XL .....	7
Standard Ford Aerostar .....	8
Aerostar Versatility .....	9
Ford Aerostar: The Technical Side .....	10-11
Preferred Equipment Packages .....	12-13
Options and Colors .....	14-15
Safety and Owner Benefits .....	16-17

Below: Aerostar XLT Wagon in Bright Regatta Blue Clearcoat Metallic over Silver Clearcoat Metallic.

Some equipment shown may be optional. See options list on page 15.



# 1987 Ford Aerostar Wagon





## AN INTERIOR DESIGNED TO DO MORE

### SEATING CHOICES

Aerostar's standard seating arrangement accommodates five. Two 7-passenger configurations are also available: two front buckets (Captain's Chairs with XL/XLT) with 2-passenger and 3-passenger rear benches; or four Captain's Chairs with 3-passenger rear bench (XLT only). And all Aerostar rear seats are easily removable, creating 139 cubic feet of cargo area.

### SENSIBLE DESIGN

Aerostar's standard underbody spare tire carrier was designed to make the best use of the interior space. Because the spare tire is outside, there's more room for people and cargo inside (carrier may be deleted).

### EASY ACCESS

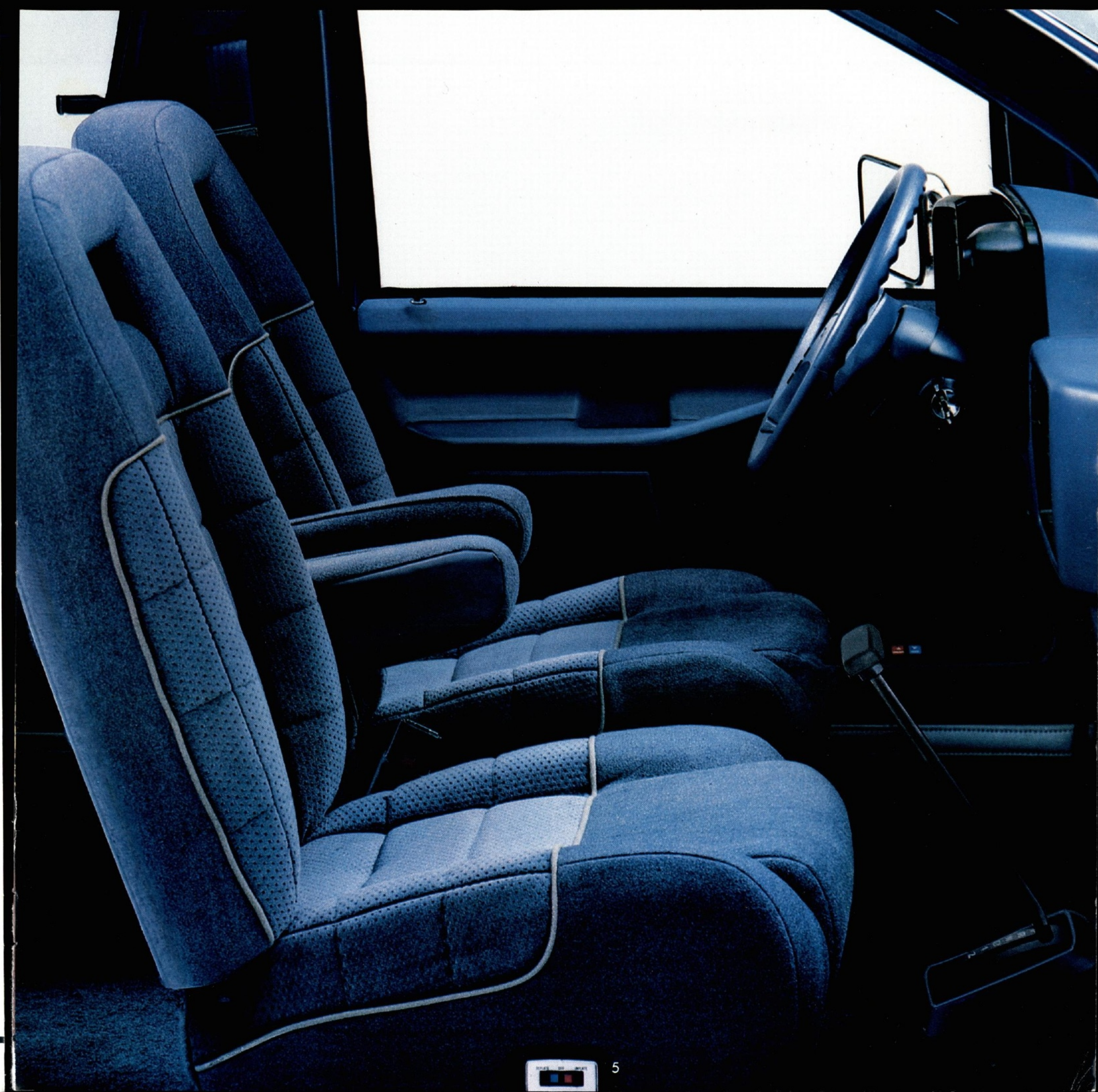
Aerostar's large front doors were designed for easy entry and exit. The "step in" height is comfortably low. Entry to the rear seating area is provided through the large, easy-opening sliding side door. Once inside there's plenty of walk-around space to get to your seat. And in the rear, the liftgate swings open to a big cargo port (rear seats removed) where there's no step to complicate loading or unloading. The liftover height is a low, comfortable 23.5 inches.

### ADVANCED INSTRUMENTATION

The electronic instrument cluster (right) is optional (included with certain XLT Preferred Equipment Packages, see page 13). It's linked to a computer control system and reports driver information on multi-color liquid crystal displays (LCDs). This integrated electronic setup provides more accurate readouts than is possible with conventional instrumentation.

Some equipment shown may be optional. See options list on page 15.

Right: Aerostar XLT interior and optional electronic instrument cluster are shown in Regatta Blue.







## FORD AEROSTAR XLT WAGON

### UNCOMMON LUXURY

A high level of comfort characterizes XLT Wagon. The premium cloth Captain's Chairs include power lumbar supports and seat-back map pockets. Also standard is door panel, quarter panel and liftgate premium interior trim as well as a leather-wrapped "A-frame" steering wheel and dual note horn. The electronic AM/FM stereo radio features a handy clock and convenient interval wipers are included.

Styled wheel covers, deluxe color-coordinated bumpers, and painted bodyside and liftgate pinstripes are added to the XL bright grille and lower bodyside two-tone to highlight the exterior.

Above: Aerostar XLT Wagon in Shadow Grey Clearcoat Metallic over Silver Clearcoat Metallic.

Right: XLT interior in Medium Grey.

Some equipment shown may be optional. See options list on page 15.



## FORD AEROSTAR XL WAGON

### ADDED AEROSTAR COMFORT

XL Wagon includes several comfort and convenience extras. Inside, the front Captain's Chairs and rear bench seat are trimmed in cloth. Interval windshield wipers are standard, along with an electronic AM/FM stereo radio which includes a handy clock (may be deleted for credit).

Outside, the bright grille and lower bodyside two-tone accent paint complement Aerostar's sleek contours. And some XL Preferred Equipment Packages include appreciated convenience extras like Privacy™ glass, the Light Group, tilt steering wheel with speed control, the overhead console, and power windows and door locks.

Above: Aerostar XL Wagon in Light Chestnut Clearcoat Metallic.

Right: XL interior in Chestnut.







## STANDARD FORD AEROSTAR WAGON

### EQUIPPED FOR VALUE

The standard Aerostar is a very well equipped vehicle. Outside, tinted glass, convex right-hand outside mirror, color-coordinated bumpers, deluxe styled steel wheels with trim rings and sliding bodyside windows are standard.

Along with color-keyed full-length cloth headliner, carpet, and trim panels, the interior includes an inside fuel filler door release, color-

keyed safety belts with comfort regulators, sunglass straps and vanity mirrors for the sun visors, a day/night rearview mirror, front dome and rear cargo lamps, courtesy lamp switches, step well lamp, three bodyside storage bins, and an electronic AM radio with clock (may be deleted for credit).

The standard powerteam is the 3.0 liter V-6 engine and 5-speed manual overdrive transmission, and P205/75R14SL BSW all-season tires are included.

Above: Standard Aerostar Wagon in Dark Cabernet Clearcoat Metallic.

Right: Standard interior in Medium Grey.

Some equipment shown may be optional. See options list on page 15.



## THE VERSATILE WORLD OF FORD AEROSTAR

Aerostar's a vehicle that does it all, around the neighborhood, around town or across the country.

Aerostar's shape is the most aerodynamic of all domestic mini-vans, contributing to fuel economy,\* reduced wind noise, and improved handling at highway speeds. Unlike some larger vans and wagons, Aerostar fits easily into any regular passenger car garage. And a 39.8-foot turning diameter helps Aerostar negotiate tight parking maneuvers.

The latches which hold Aerostar's rear seats securely in place have a quick-release feature. With seats removed, recessed anchors provide a flat, unobstructed load floor. And because the spare tire is under the body, not inside, there's a full 139 cubic feet for cargo.

Consider towing. Because the driving wheels are in the rear *under the load*, a properly equipped Aerostar Wagon is rated to tow trailers weighing up to 4,900 pounds (nearly 2½ tons).\*\*

And, if you're a recreational vehicle enthusiast, Aerostar is suitable for a variety of aftermarket RV conversions. See your Ford Dealer for all the details.

If you have people-moving/cargo-hauling needs, chances are good that Aerostar has what you're looking for.

\*See Gas Mileage, page 11.

\*\*Reduced by passenger and cargo weight in the towing vehicle.

Below: Aftermarket Aerostar recreational conversion.







## FORD AEROSTAR: THE TECHNICAL SIDE

### ENGINEERING A HIGH-QUALITY VEHICLE

Ford engineers have gone to great lengths, applying their expertise and employing the latest advancements in computer-assisted design technology, to make Aerostar a high-quality mini-van.

Well before the first Aerostar prototype was built, Ford engineers were putting the vehicle through maneuvers on a computer screen, using Total Vehicle Simulation to study ride quality and handling response. This technology allows the engineers to determine vehicle design based on concrete data.

### AN EFFICIENT DESIGN

Driving in the 80's demands functional design. Aerostar's sleek lines are as much efficient as they are appealing. The dynamic shape contributes to fuel economy (see GAS MILEAGE, below), reduced wind noise and improved handling at highway speeds. In fact, Aerostar's .37 coefficient of drag is the best of all domestic mini-vans.



### GAS MILEAGE

EPA mileage ratings for the 1987 Aerostar were not available at the time this catalog was approved for printing. As soon as EPA figures are released, your Ford Dealer will be among the first to receive this information and will be happy to pass it along to you.

Left: Aerostar XLT Wagon in Bright Regatta Blue Clearcoat Metallic over Silver Metallic.

Some equipment shown may be optional. See options list on page 15.

### AEROSTAR'S RIDE QUALITY

Generally speaking, the longer the wheelbase a vehicle has, the better the ride. Even though Aerostar is shorter overall than other mini-vans, it offers the longest wheelbase. But there's another comfort factor. Aerostar uses twin-tube, gas-pressurized shock absorbers. A low-pressure charge of inert nitrogen gas suppresses foaming of the hydraulic fluid due to rapid bumps or similar agitation. The result is a smooth ride under normal circumstances, yet a firm enough ride for rough road conditions.

### V-6 POWER

The standard 3.0 liter V-6 engine is one of the most powerful engines to be found in a compact vehicle like Aerostar. This efficient powerplant features port-type electronic fuel injection and delivers 145 horsepower at 4,800 rpm and 165 lbs.-ft. of torque at 3,600 rpm (based on SAE standard J1349). Extra power for tough duty.

### FUEL SAVING TRANSMISSIONS

In addition to the standard 5-speed manual overdrive transmission, Ford's innovative 4-speed Automatic Overdrive transmission is optional. It improves fuel economy by eliminating torque converter slip by applying the converter clutch at highway cruising speeds in the upper range of third gear and in fourth gear, thereby reducing engine speed.

### BIG TOWING CAPABILITY

The advantage of rear-wheel drive is important when it comes to hauling loads and/or towing trailers. Because the driving wheels are in the rear, under the load, a properly equipped Aerostar is rated to tow trailers weighing up to 4,900 pounds—nearly 2½ tons.\* That's an impressive towing capability for a compact vehicle like Aerostar.

\*Reduced by passenger and cargo weight in the towing vehicle.





## PREFERRED EQUIPMENT PACKAGES

### AN EASY WAY TO BUY

The **Aerostar XL Wagon** pictured at left illustrates the high level of standard equipment with this trim level. Included is Preferred Equipment Package 410A (also shown is optional Deluxe Two-Tone paint).

#### AEROSTAR XL WAGON (WITH PREFERRED EQUIPMENT PACKAGE 410A)

- 3.0 Liter V-6 engine
- 5-Speed manual overdrive transmission
- P205/75Rx14SL BSW all-season tires
- Bright grille
- Two-tone accent on lower bodyside (except when main body color matches bumper color)
- Dual cloth reclining front Captain's Chairs
- 7-Passenger seating
- Electronic AM/FM stereo radio with clock
- Interval wipers
- Privacy™ glass
- Light Group
- Speed control/tilt steering wheel

#### Plus the following standard features:

- Power rack and pinion steering
- Black aero foldaway mirrors, right-hand convex
- Deluxe styled steel wheels
- Inside fuel filler door release
- Three bodyside storage bins
- Sliding bodyside windows
- Color-keyed safety belts with comfort regulators
- Day/night rearview mirror
- Full-length, color-keyed carpeting
- Color-keyed full-length cloth headliner
- Visor vanity mirrors and sunglass straps

Left: Aerostar XL Wagon in Dark Walnut Clearcoat Metallic over Light Chestnut Clearcoat Metallic.

**Preferred equipment packages** are groups of popular features. By combining them into groups, we simplify the ordering procedure. All you have to do is 1) decide on the trim level (Standard, XL or XLT), and 2) select the Preferred Equipment Package from the chart below that includes the features you want.

For instance, if you decide on an Aerostar XL, you can choose to have it equipped with one of four Preferred Equipment Packages numbered 405A, 407A, 410A and 411A. Package 405A is the standard XL, which by itself is a well-

equipped vehicle (detailed on page 7). Package 407A adds 7-passenger seating. Package 410A adds the Light Group, Privacy™ glass and speed control/tilt steering wheel. And Package 411A adds the overhead console and power windows and door locks.

At this point, if you would like to further personalize your new Aerostar XL, refer to page 15, find the Preferred Equipment Package number under XL trim and select from the options listed under it.

STANDARD AEROSTAR WAGON	PREFERRED EQUIPMENT PACKAGES	
	400A	402A
3.0 liter V-6 engine	•	•
5-Speed manual overdrive transmission	•	•
Tinted glass	•	•
Black aero foldaway mirrors, right-hand convex	•	•
Deluxe styled steel wheels	•	•
Inside fuel filler door release	•	•
Electronic AM radio with clock and dual speakers (may be deleted for credit)	•	•
Three bodyside storage bins	•	•
5-Passenger seating	•	•
7-Passenger seating		•
Interval wipers		•

AEROSTAR XL WAGON	PREFERRED EQUIPMENT PACKAGES			
	405A	407A	410A	411A
3.0 liter V-6 engine	•	•	•	•
5-Speed manual overdrive transmission	•	•	•	•
5-Passenger seating	•			
7-Passenger seating		•	•	•
Electronic AM/FM stereo radio with clock <sup>(1)</sup>	•		•	•
Interval wipers	•	•	•	•
Privacy™ glass			•	•
Light Group <sup>(2)</sup>			•	•
Speed control/tilt steering wheel			•	•
Overhead console				•
Power windows and door locks				•

AEROSTAR XLT WAGON	PREFERRED EQUIPMENT PACKAGES			
	412A	413A	415A	416A
3.0 liter V-6 engine	•	•	•	•
5-Speed manual overdrive transmission	•	•	•	•
5-Passenger seating	•			
7-Passenger seating		•	•	•
Premium cloth seat trim	•	•	•	•
Electronic AM/FM stereo radio with clock	•	•	•	•
Electronic AM/FM stereo radio with cassette tape player/clock			•	•
Interval wipers	•	•	•	•
Privacy™ glass			•	•
Light Group <sup>(2)</sup>			•	•
Speed control/tilt steering wheel			•	•
Overhead console			•	•
Power windows and door locks			•	•
Electronic instrument cluster <sup>(3)</sup>			•	•
Heated rear window defroster and wiper/washer				•
Super Sound System <sup>(4)</sup>				•

<sup>(1)</sup> Includes rear radio controls and headphone jacks. May be deleted for credit. <sup>(2)</sup> Includes underhood, glove box, front reading, ashtray (instrument panel and left-hand second row) and under instrument panel lamps. Also includes headlamps-on warning and illuminated entry. <sup>(3)</sup> Includes electronic speedometer module, electronic tachometer module, digital fuel gauge, multifunction gauge, cluster control switches, turn signal indicators and warning center. <sup>(4)</sup> Includes graphic equalizer, rear radio controls and headphone jacks.



# 1987 Ford Aerostar Wagon



## PERSONALIZED OPTIONS

In addition to the Preferred Equipment Packages, Aerostar Wagon offers a range of individual options which allow you to equip your vehicle even more to your particular needs.

Once you've chosen the series and Preferred Equipment Package you desire, find your Preferred Equipment Package number in the chart on page 15, then choose from the options listed under it.

Options and their availability are subject to change during the year. Some options may be subject to ordering restrictions. Your Ford Dealer can give you complete details.

Following are descriptions of selected options that may be of particular interest to you.

### SUPER SOUND SYSTEM

Aerostar's Super Sound System (shown at right), provides concert hall-like fidelity with its electronic AM/FM stereo radio with cassette tape player, 7-band graphic equalizer and six premium sound speakers.

The radio includes a digital clock and the cassette tape player includes Dolby® noise reduction. For rear passengers, a control console (shown at right) includes two stereo headphone jacks, seek tuning controls, volume controls, rear speaker on/off switch and station memory control.

### AN ADVANCED AIR CONDITIONING/HEATING SYSTEM

In addition to the conventional air conditioning option (shown at right), the high capacity air conditioning/heating system option offers enhanced rear compartment heating/cooling and includes a fan control for second-row rear seat passengers.



Heated rear window defroster and rear wiper/washer



Overhead console (included with Preferred Equipment Pkgs. 411A, 415A and 416A)



Speed control/tilt steering wheel



AM/FM stereo radio with cassette, Super Sound System



Graphic equalizer, Super Sound System



Black outside swingaway mirrors

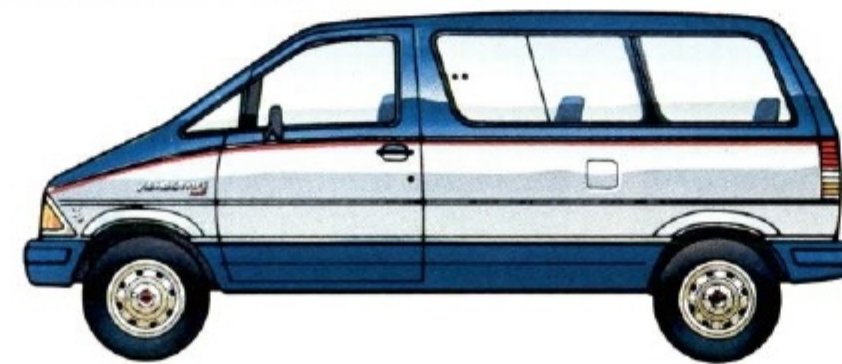


Styled wheel covers

## TWO-TONE PAINT



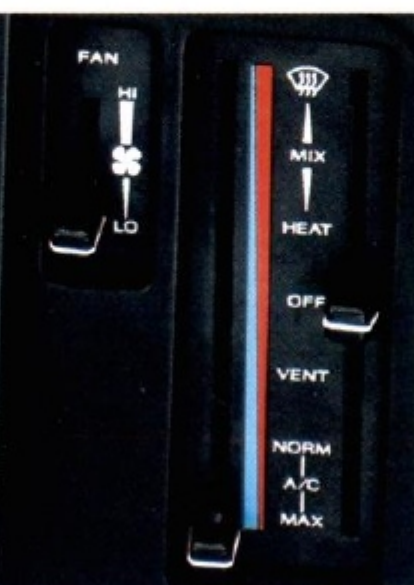
Two-Tone Accent on Lower Bodyside (Included with most XL and XLT Wagons)



Deluxe Two-Tone Paint (XL and XLT Wagons)



Super Sound System rear control console (see left)



Air conditioning



Rear fan control (high-capacity AC/auxiliary heater)

■ = Optional    ● = Included in equipment package (See page 13 for additional standard features)

STANDARD AEROSTAR WAGON	400A	402A
Automatic Overdrive transmission	■	■
Privacy™ glass	■	■
Speed control/tilt steering wheel	■	■
Air conditioning	■	■
High-capacity air conditioner and auxiliary heater	■	■
"Supercool" radiator cooling	■	■
Electronic AM/FM stereo radio with clock <sup>(1)</sup>	■	■
Electronic instrument cluster <sup>(2)</sup>	■	■
Black outside swingaway mirrors	■	■
Bodyside protection molding	■	■
Roof rack	■	■
Engine block heater	■	■
Heated rear window defroster and wiper/washer	■	■
Trailer Towing Package <sup>(3)</sup>	■	■
Limited-slip rear axle	■	■
Heavy-duty battery	■	■
Underbody spare tire carrier delete	■	■
Styled wheel covers	■	■

AEROSTAR XL WAGON	405A	407A	410A	411A
Automatic Overdrive transmission	■	■	■	■
Privacy™ glass	■	■	■	■
Speed control/tilt steering wheel	■	■	■	■
Air conditioning	■	■	■	■
High-capacity air conditioner/auxiliary heater	■	■	■	■
"Supercool" radiator cooling	■	■	■	■
Heated rear window defroster and wiper/washer	■	■	■	■
Electronic AM/FM stereo with cassette and clock <sup>(1)</sup>	■	■	■	■
Electronic instrument cluster <sup>(2)</sup>	■	■	■	■
Super Sound System <sup>(4)</sup>	■	■	■	■
Black outside swingaway mirrors	■	■	■	■
Bodyside protection molding	■	■	■	■
Roof rack	■	■	■	■
Deluxe Two-Tone paint	■	■	■	■
Engine block heater	■	■	■	■
Power windows and door locks	■	■	■	■
Limited-slip rear axle	■	■	■	■
Heavy-duty battery	■	■	■	■
Underbody spare tire carrier delete	■	■	■	■
Trailer Towing Package <sup>(3)</sup>	■	■	■	■
Light Group <sup>(5)</sup>	■	■	■	■
Styled wheel covers	■	■	■	■

AEROSTAR XLT WAGON	412A	413A	415A	416A
Automatic Overdrive transmission	■	■	■	■
Air conditioning	■	■	■	■
High-capacity air conditioner/auxiliary heater	■	■	■	■
"Supercool" radiator cooling	■	■	■	■
Heated rear window defroster and wiper/washer	■	■	■	■
Electronic AM/FM stereo radio with cassette player and clock <sup>(1)</sup>	■	■	■	■
Electronic instrument cluster <sup>(2)</sup>	■	■	■	■
Trailer Towing Package <sup>(3)</sup>	■	■	■	■
Super Sound System <sup>(4)</sup>	■	■	■	■
Quad Captain's Chairs with 3-passenger rear bench	■	■	■	■
Black outside swingaway mirrors	■	■	■	■
Bodyside protection molding	■	■	■	■
Roof rack	■	■	■	■
Deluxe Two-Tone paint	■	■	■	■
Engine block heater	■	■	■	■
Limited-slip rear axle	■	■	■	■
Heavy-duty battery	■	■	■	■
Underbody spare tire carrier delete	■	■	■	■
Privacy™ glass	■	■	■	■
Speed control/tilt steering wheel	■	■	■	■
Power windows and door locks	■	■	■	■
Light Group <sup>(5)</sup>	■	■	■	■

## COLOR SELECTIONS

Exterior Paint Colors	Interior Trim Colors		
	Medium Grey	Regatta Blue	Chestnut
Raven Black	X		X
Medium Red	X		X
Spinnaker Blue		X	
Colonial White	X	X	X
Light Chestnut			X
Silver Clearcoat Metallic	X	X	
Dark Cabernet Clearcoat Metallic	X		X
Light Chestnut Clearcoat Metallic			X
Bright Regatta Blue Clearcoat Metallic	X	X	
Deep Shadow Blue Clearcoat Metallic*	X	X	
Shadow Grey Clearcoat Metallic*	X		
Dark Walnut Clearcoat Metallic*			X

\*Available with Deluxe Two-Tone Paint only. See your dealer for available two-tone paint combinations.

Some of these paint colors are shown in this catalog. On the printed page, of course, colors are at best only representative of the originals. Your Ford Dealer can show you actual samples of the paint colors presented above.



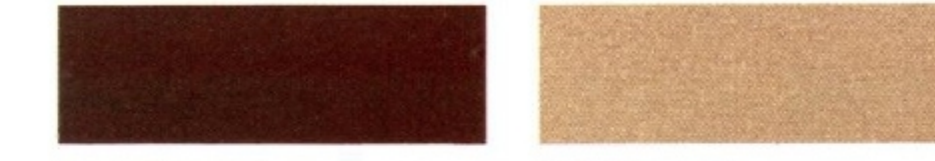
Raven Black Medium Red



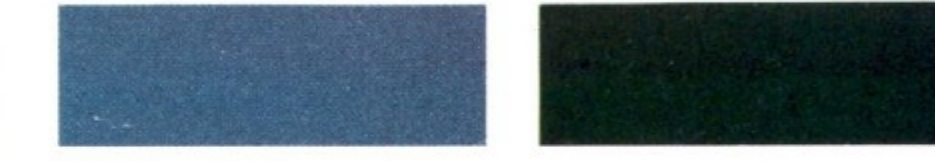
Spinnaker Blue Colonial White



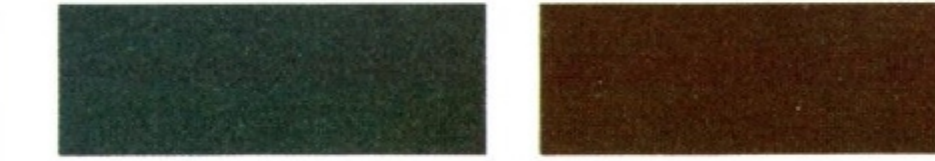
Light Chestnut Silver Clearcoat Metallic



Dark Cabernet Clearcoat Metallic Light Chestnut Clearcoat Metallic



Bright Regatta Blue Clearcoat Metallic Deep Shadow Blue Clearcoat Metallic



Shadow Grey Clearcoat Metallic Dark Walnut Clearcoat Metallic

Note: California emissions system and High Altitude emissions system are optional with all Aerostar Wagons. (1) Includes rear radio controls and headphone jacks. (2) Includes electronic speedometer module, electronic tachometer module, digital fuel gauge, multifunction gauge, cluster control switches, turn signal indicators and warning center. (3) Includes "Supercool" radiator, wiring harness, heavy-duty turn signal flasher and limited-slip rear axle. (4) Includes Electronic AM/FM stereo radio with cassette player and clock, graphic equalizer, rear radio controls and headphone jacks. (5) Includes underhood, glove box, front reading, ashtray (instrument panel and left-hand second row) and under instrument panel lamps. Also includes headlamps-on warning and illuminated entry.



## SAFETY AND OWNER BENEFITS

### THE FORD QUALITY COMMITMENT

The Ford Quality Commitment is built on a basic and simple concept: Integrity. Integrity in the way we build our products, integrity in our dealerships' service and integrity in the treatment of our customers.

### TOGETHER WE CAN SAVE LIVES

Ford Motor Company strongly encourages all passengers to use their safety belts.

In Aerostar, front seat lap and shoulder belts have automatic retractors. Outboard rear seat positions also have lap belts with retractors.

Ford urges the use of child and infant restraints, as required by law in all states. Ford's easy-to-install Tot-Guard (for children 20 to 50 pounds) and Infant Carrier (for children up to 20 pounds) are available at all Ford Dealers. If a child restraint requires a top-tether, Ford vehicles provide special anchorages.



### FORD LIFEGUARD DESIGN SAFETY FEATURES

#### Vehicle Operation

- Split service hydraulic brake system with warning light
- Corrosion-resistant brake lines
- Turn indicator lever with lane-changing signal feature
- Hazard warning flasher
- Backup lights
- Side marker lights
- Parking lights coupled with headlamps
- Two-speed windshield wipers
- Windshield washers
- Dual outside rearview mirrors
- Glare-reduced instrument panel, windshield wiper arms and windshield pillars
- Uniform transmission shift quadrant with safety starting switch (on all vehicles equipped with automatic transmission)
- Continuously variable control illumination intensity (instrument cluster lighting)
- Safety hood latch system
- Responsive windshield defroster system
- Tamper-resistant (non-reversing) odometer
- Speedometer with highlighted 55 mph (on vehicles with analog speedometer)

#### Occupant Protection

- Safety-designed front end structure
- Safety-designed roof structure
- Two-position door safety latches
- Integral lap and shoulder belts with automatic retractors for outboard occupants
- Positive safety belt fastening reminder warning light and buzzer or chime for the driver's seat
- Lap belt for center passenger of 3-passenger rear bench seat
- Energy-absorbing steering column and steering wheel
- Energy-absorbing armrests and safety-designed door handles
- Energy-absorbing instrument panel with padding for front pas-



- senger
- Energy-absorbing sun visors
- Safety glove box latch
- Inside yieldaway rearview mirror
- Impact-absorbing laminated safety glass windshield
- Flame-resistant interior materials
- Safety-designed coat hook
- Safety-designed radio control knobs and push buttons

#### Anti-Theft

- Locking steering column with key warning buzzer or chime (with "Park" interlock or push button for key release)
- Visible vehicle identification number



Participating Ford Dealers are now offering the Lifetime Service Guarantee, which guarantees their work on your Ford vehicle for as long as you own it. This means that the covered repair is paid for once — and never again. If it ever has to be fixed again, the repairing dealer will fix it free. Free parts. Free labor. Even if the vehicle is kept a lifetime. It doesn't matter where it was purchased, or whether it's new or used; the work is still covered by the repairing dealer.

This limited warranty covers vehicles in normal use. Items not covered include routine maintenance parts, belts, hoses, sheet metal, and upholstery. Ask to see this guarantee when you visit your participating Ford Dealer.



The optional Ford Extended Service Plan covers major components on new Ford cars and trucks for longer than the vehicle's basic warranty. The cost for this added protection is so moderate that it could pay for itself the first time you need it. Your Ford Dealer has full details.



Ford Motor Credit Company is interested in helping to fill the transportation needs of every qualified buyer of a Ford product. A participating dealer can arrange financing terms or a Red Carpet Lease® tailored to your circumstance. Ford Credit has offices conveniently located throughout the United States.



Genuine Ford and Motorcraft original equipment replacement parts meet the same high standards as those installed in production. They are your best assurance of quality and long-term satisfaction.

### SCHEDULED MAINTENANCE

Here are some examples of scheduled maintenance intervals for the 1987 Ford Aerostar. For complete maintenance recommendations, refer to the Aerostar Maintenance Schedule Booklet.

Engine oil and filter change	.....each 7,500 miles (or 6 months)
Spark plug change	.....each 30,000 miles
Air filter replacement	.....each 30,000 miles
Engine coolant replacement	.....each 30,000 miles (or 3 years)

### CORROSION PROTECTION

The extensive use of galvanized steel, special applications of aluminized wax and urethane spray protect Aerostar from corrosive agents such as road salt. The hood, cowl top grille, liftgate and front and rear bumper fascias are plastic and can never rust.



- Two-sided galvanized steel
- One-sided galvanized steel
- Differentially coated two-sided galvanized steel
- Urethane spray
- Plastic

### AEROSTAR'S UNIPRIME SYSTEM

The "Uniprime" primer system is a high-build cathodic electrocoat body primer material with higher film thickness than similar conventional processes. It offers excellent corrosion protection, good paint adhesion and paint coverage in hard-to-reach areas and is just one of 15 different operations required to prepare the body for painting. Enamel is then applied by

automated sprayers, minimizing runs, drips and thin coverage. The result: a lasting, superior paint finish.

Clearcoat Metallic paint, a special high-luster finish, is achieved by applying a final "clear" coat of acrylic enamel over the "color" coats for a long-lasting, deep, glossy look.

### FORD-PAID REPAIR PROGRAMS AFTER THE WARRANTY PERIOD

Sometimes Ford offers adjustment programs to pay all or part of the cost of certain repairs. These programs are intended to assist owners and are in addition to the warranty or to required recalls. Ask Ford or your dealer about such programs relating to your Ford or Lincoln-Mercury vehicle.

To get copies of any adjustment program for your vehicle or the vehicle of interest to you: Call Ford toll-free at 1-800-241-3673. Alaska/Hawaii call 1-800-241-3711 and in Georgia call 1-800-282-0959.

Or write Ford at:  
Ford Customer Information System  
Post Office Box 95427  
Atlanta, Georgia 30347

We'll need your name and address; year, make and model vehicle, as well as engine size; and whether you have a manual or automatic transmission.

### TECHNICAL SERVICE BULLETINS

All vehicles need repairs during their lifetime. Sometimes Ford issues technical service bulletins (TSBs) and easy-to-read explanations describing unusual engine or transmission conditions which may lead to costly repairs, the recommended repairs, and new repair procedures. Often a repair now can prevent a more serious repair later. Ask Ford or your dealer for any such TSBs and explanations relating to your Ford or Lincoln-Mercury vehicle.

To get copies of these technical service bulletins and explanations for your vehicle or the vehicle of interest to you: Call Ford toll-free at 1-800-241-3673. Alaska/Hawaii call 1-800-241-3711 and in Georgia call 1-800-282-0959.

Or write Ford at:  
Ford Customer Information System  
Post Office Box 95427  
Atlanta, Georgia 30347

We'll need your name and address; year, make and model vehicle, as well as engine size; and whether you have a manual or automatic transmission.

### OPTIONS AVAILABILITY

Options shown or described in this catalog are available at extra cost and may be offered only in combination with other options and subject to additional ordering requirements or limitations.

### PRODUCT CHANGES

Ford Division reserves the right to change product specifications at any time without incurring obligations.

### MEASUREMENTS

(In inches unless otherwise indicated)

<b>EXTERIOR</b>	
Overall Length	.....174.9
Overall Width	.....71.7
Overall Height (Empty)	.....72.6
Wheelbase	.....118.9
Front Tread	.....61.5
Rear Tread	.....60.0
<b>FRONT COMPARTMENT</b>	
Head Room	.....39.5
Leg Room	.....41.4
<b>REAR COMPARTMENT</b>	
Maximum Seating Capacity	.....7
2nd Row Head Room (5-pass.)	.....37.7
(7-pass.)	.....38.1
2nd Row Leg Room (5-pass.)	.....39.8
(7-pass.)	.....37.9
2nd Row Seat Width (5-pass.)	.....53.4
(7-pass.)	.....44.2
3rd Row Head Room	.....37.4
3rd Row Leg Room	.....37.6
3rd Row Seat Width	.....53.4
Cargo Length at Floor	.....50.5
(Standard seating at seat base)	.....46.9
Cargo Width at Wheelhouse*	.....23.5
Cargo Floor to Ground (Empty)	.....139.2
Cargo Volume (cu. ft.)*	.....4,900
Maximum Trailer Towing (lbs.)	.....17.0
Fuel Capacity (gallons)	.....17.0

\*With rear seat(s) removed.

### "ASK YOUR FORD DEALER"

Following publication of this catalog, certain changes in standard equipment, options, prices and the like, or product delays, may have occurred which would not be included in these pages. Your Ford Dealer is your best source for up-to-date information.

## BUY OR LEASE A NEW FORD AEROSTAR



**BUY OR LEASE  
A NEW FORD AEROSTAR**

