

1987 Ford Ranger



FORD RANGER FOR 1987

BEST-BUILT AMERICAN TRUCKS SIX YEARS RUNNING

"Quality is Job 1." In fact, for the past six consecutive years, Ford quality has led all other American automotive companies. This is based on an average of owner-reported problems in the first three months of service on '86 models, and in a six-month period on '81-'85 models designed and built in North America.



Ford Ranger GT is a superbly equipped 4x2 with street-smart styling and engineering. Electronically fuel-injected V-6 power is standard.



Ford Ranger STX is available in a variety of sporty V6-powered 4x2 and 4x4 models, including the new High Rider Regular Cab 4x4.



Ford Ranger XLT offers exceptional value. It's beautifully equipped inside and out with the kinds of features most drivers prefer.



Ford Ranger Custom provides an impressive list of features—more than what you might expect in a standard-equipped pickup.

CONTENTS

Ford Ranger Interior.....	4-5
Ford Ranger GT.....	6
Ford Ranger STX.....	7
Ford Ranger XLT.....	8
Ford Ranger Custom and Ranger "S".....	9
Ford Ranger: The Technical Side.....	10-11
Ford Ranger Specifications.....	12-13
Preferred Equipment Packages.....	14-15
Options and Colors.....	16-17
Safety and Owner Benefits.....	18-19

Below: Ranger STX High Rider Regular Cab 4x4 in Dark Canyon Red. Shown with optional Sport Appearance Package (light bar not intended for occupant protection).

Some equipment shown on these pages may be optional. See options list on page 17.



1987 Ford Ranger 

INSIDE RANGER: STYLE, COMFORT, VERSATILITY

The selection of interiors in Ford Ranger reflects the many needs of drivers of compact pickups. Ranger comes in two sizes: Regular Cab and the roomier SuperCab. And Ranger offers four trim choices, from the sporty GT and STX to the deluxe XLT and standard Custom series.

Whichever combination of size and style you choose, you'll be driving in a cab equipped with seating and instrumentation that are designed by Ford to provide excellent comfort and convenience.

RANGER REGULAR CAB

The Ranger Regular Cab is wide and roomy, with a comfortable 3-passenger bench seat and lots of head and leg room.

The bench seat features a deep foam cushion on strong Flex-o-lator springs and is fully adjustable fore and aft with 5½ inches of travel. Also, the seat back is designed to be folded forward with minimal effort when you need access to the space behind the seat.

In addition to Ranger's four trim series, the Regular Cab is available in the highly affordable Ranger "S" model, as well as a Custom series with optional 2.3 liter turbo-diesel power (except in California).

RANGER SUPERCAB

If you need more inside cargo space, Ranger SuperCab is for you. In this extended-cab compact pickup, you have nearly 17 inches of additional inside cab length for tools, camping or fishing gear—whatever you wish to carry.

SuperCab features a standard 3-passenger 60/40 split bench seat (available in the STX series) with tip/slide right seat track. This design lets you slide the seat forward when the seat back is folded for convenient access to the rear compartment. All SuperCab series also include standard power steering and tinted glass.

What's more, dual rear jump seats, standard in XLT and optional in other series, make SuperCab a 4- or 5-passenger pickup. They can be folded up and out of the way when not in use—an added measure of versatility to SuperCab's wide dimension of convenience.

SPORTY GT AND STX INTERIORS

Enjoy that special feeling of being comfortably seated in a superbly equipped and handsomely

appointed interior. You can expect nothing less in a fun-tough, sporty Ranger GT or STX series from Ford.

In Ranger GT you have the top-line reclining "sport" bucket seats. The STX series features reclining cloth bucket seats in the Regular Cab, or dual cloth Captain's Chairs with individual recliners and power lumbar supports in the SuperCab.

The door trim panels are cloth-covered and have carpeted map pockets. The steering wheel is wrapped in genuine leather. And the standard sound system is electronic AM/FM stereo radio/digital clock and four speakers.* GT includes, in addition, a cassette tape player.

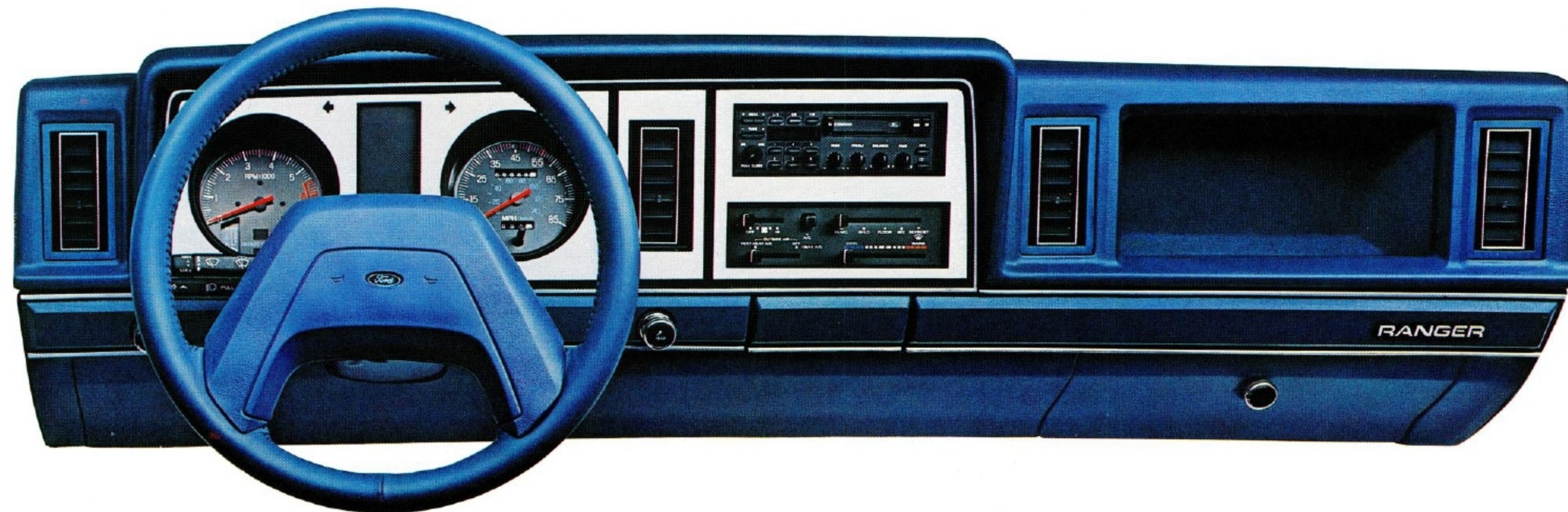
What's more, you get pivoting front vent windows for added ventilation, a convenient trip odometer, and a tachometer on the instrument cluster to read the pulse of the multiple-port electronically fuel-injected 2.9 liter V-6 engine that powers both Ranger GT and STX.

*May be deleted from GT for credit.

Right: Reclining cloth sport bucket seats in Regatta Blue, optional in Ranger STX Regular Cab (shown) and standard in Ranger GT.

Left: SuperCab's inside rear cargo area provides nearly 17 more inches of floor length. Vinyl jump seats, folded down, accommodate two additional passengers.

Below: Ranger STX instrument panel in Regatta Blue. Some equipment shown on these pages may be optional. See options list on page 17.





FORD RANGER GT

BOLD RANGER STREET MACHINE

More drivers today are discovering the personal enjoyment of driving Ranger pickups. It's certainly not surprising, because Rangers have fun-to-drive performance, handling and maneuverability.

And now the Ford lineup of fun-tough Rangers is wider and better than ever with the introduction of a street machine called Ranger GT. It's a Regular Cab 4x2 engineered with power and agility to more than match its bold styling flair.

Ranger GT has plenty of muscle with its 140-hp* 2.9 liter multiple-port electronically fuel-injected V-6, one of the most powerful engines you'll find in a compact pickup. You can take hold of the standard 5-speed manual shift, or go with the optional 4-speed Automatic Overdrive transmission.**

What's more, Ranger GT is equipped with a standard Limited Slip rear axle, as well as a Handling Package with rear stabilizer bars to take tight corners with confidence. And GT rides on its own P215/70R14 Eagle GT tires.

Ranger GT has the look of performance as well. Sporty cast aluminum wheels. Blackout exterior trim all-around, including the grille. GT emblem,

too. Cloth sport bucket seats and AM/FM stereo with cassette tape player are among the many features listed on page 4 that you'll find in Ranger GT's superbly equipped interior.

If you're looking for a compact pickup with street-smart style and engineering, you'll surely want to look into a 1987 Ranger GT 4x2 at your Ford Dealer.

*Based on SAE Standard J-1349.

**See your dealer for Automatic Overdrive transmission availability.

Above: Ranger GT Regular Cab 4x2 in Shadow Grey Clearcoat Metallic.



FORD RANGER STX

EVERY BIT AS EXCITING AS IT LOOKS

Get ready for fun-tough driving excitement in a 1987 Ranger STX 4x2 or 4x4. In STX you have a powerful 140-horsepower* 2.9 liter electronically fuel-injected V-6 plus excellent handling capability to go along with it.

STX 4-wheeling fun. Take a Ranger STX 4x4 down paved streets or up rugged hills and enjoy driving for no other reason than the pure thrill of it. Take the wheel of the new STX Regular Cab 4x4 called the High Rider. It's engineered with a unique suspension system that raises the

vehicle height and delivers improved handling performance. Or choose the STX SuperCab 4x4 equipped with a Handling Package. Both the Regular Cab and SuperCab STX 4-wheelers ride on P215/75R15SL outline-white-letter off-road tires.

STX 2-wheel drive. The STX 4x2 is a great performer, too. It's powered by the 2.9 liter EFI engine, equipped with a Handling Package, and rides on P205/70R14SL Eagle GT outline-white-letter tires.

Sporty inside and out. Along with the performance you'll enjoy in Ranger STX, you also get the outstanding interior features described on page 4. Plus sporty exterior trim

including unique bodyside tape treatment (4x4) or lower accent Two-Tone paint with unique tape striping (4x2), black foldaway mirrors, black grille with bright surround molding, black front contour and rear step bumpers. The optional Sport Appearance Package—light bar** with off-road lights, grille guard with fog lamps, plus tubular rear bumper—is available to give your Ranger STX an even bolder performance image.

*Based on SAE Standard J-1349.

**Light bar not intended for occupant protection.

Above: Ranger STX SuperCab 4x4 in Bright Canyon Red. Shown with optional Sport Appearance Package.

Some equipment shown on these pages may be optional. See options list on page 17.



FORD RANGER XLT

EQUIPPED FOR VALUE

Ranger XLT is a beautifully equipped compact pickup, offering outstanding value along with all its fun-to-drive qualities.

Experience the comfort and luxury of XLT's deluxe interior. The wide and roomy 3-passenger cab features a knitted vinyl contoured bench seat in the Regular Cab, or cloth 60/40 split bench seat (shown at right) in the SuperCab. The floor is covered with plush color-keyed carpeting, and the headliner is color-keyed cloth. A tachometer is included in the instrument cluster. Electronic AM/FM stereo

with digital clock is yet another XLT standard feature. Choose the XLT SuperCab and you also get the dual rear vinyl jump seats shown on page 4 as well as a cargo cover.

XLT is equally handsome on the outside. Deluxe Two-Tone paint*, sliding rear window (Regular Cab), chrome front bumper and chrome rear step bumper, bright tailgate applique, deluxe wheel trim — they're all part of the special style and value that are uniquely Ranger XLT.

*May be deleted for credit and replaced with dual upper pinstripes and wheelip moldings (as shown above).

Above: Ranger XLT Regular Cab in Bright Regatta Blue Clearcoat Metallic.

Right: Ranger XLT interior with split bench seat in Regatta Blue.



FORD RANGER CUSTOM AND "S"

AFFORDABLE AND FUN RANGERS

Ford gives you a choice of two highly affordable standard Rangers, each with the fun-to-drive qualities and versatility you'd want in a trim-size pickup.

Ranger Custom. This Ranger series comes with a list of features you might not expect in a standard pickup. Features such as power brakes, gas-pressurized shocks, halogen headlights, interval windshield wipers, trip odometer, plus instrument cluster gauge

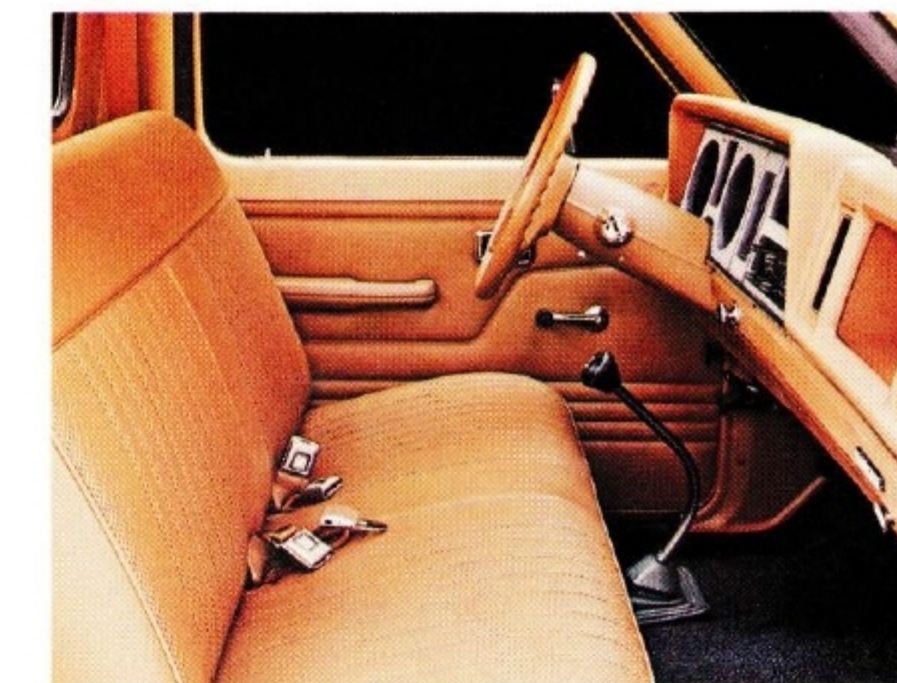
package. Standard also are a vinyl bench seat (Regular Cab) or knitted vinyl 60/40 split bench seat (SuperCab), color-keyed safety belts with comfort regulator feature, and much more. SuperCab has even more features including power steering, tinted glass and cloth headliner.

Ranger "S." For value that gets right down to the basics, choose the Ranger "S" Regular Cab with 2.0 liter engine* plus an adjusted list of equipment that includes manual brakes, P185/75R14SL all-season steel-belted radials and other features. Ranger "S" has a low sticker price that's mighty hard to beat.

*2.3L EFI in California and High Altitude areas.

Above: Ranger Custom Regular Cab in Light Chestnut.

Right: Ranger Custom interior in Chestnut.



Some equipment shown on these pages may be optional. See options list on page 17.

FORD RANGER: THE TECHNICAL SIDE

ENGINEERING EXCELLENCE IN A HIGH-QUALITY PICKUP

Ford engineers have gone to great lengths, applying their expertise and employing the latest advancements in computer-assist design technology, to make Ranger a compact pickup of excellent all-around performance.

On Ranger's master blueprint are the bold outlines of a strong ladder-type frame, Twin-I-Beam (4x2) and Twin-Traction Beam (4x4) independent front suspension systems, computer-selected front coil and rear leaf springs to match various load requirements precisely, gas-pressurized shock absorbers for consistency of ride quality. Plus advanced-design powerteams engineered to place the demands of performance and efficiency in proper balance.

Ford knows that there can be no shortcuts to producing a quality-built pickup. That's why Ford's high standards of engineering excellence are matched to equally high standards of quality, from the drawing boards all the way through to final assembly.

THE NEW STX HIGH RIDER: A UNIQUE RANGER 4-WHEELER

Ford engineers set out to create a new experience in Ranger 4-wheeling enjoyment when they designed the new STX High Rider Regular Cab. When the design task was completed, a list of 21 unique components was required to give the STX High Rider its increased vehicle height and greater handling performance.

STX High Rider's complete suspension system was engineered with the aid of extensive computer-design technology to deliver flat, stable handling and ride smoothness.



Manny Esquerro race-prepared Ranger 4x4



Ranger STX High Rider Regular Cab 4x4 in Silver Clearcoat Metallic. Shown with optional Sport Appearance Package (light bar not intended for occupant protection)

The Twin-Traction Beam independent front suspension in STX High Rider features a special forward-mounted stabilizer bar which helps deliver excellent cornering performance and optimizes handling balance between the front and rear suspension systems. This front stabilizer bar is computer-matched with a new rear stabilizer bar for precise handling and control under widely varied load conditions. And there are many other unique components in STX High Rider, including new revalved heavy-duty gas-pressurized shock absorbers, new rear leaf springs, revised brake components, transfer case and front driveshaft.

A lot of special engineering has gone into making STX High Rider the best handling of all Ranger 4-wheelers.



Ranger GT 4x2 in Shadow Grey Clearcoat Metallic

MULTIPLE-PORT FUEL-INJECTED 2.9L V-6 PERFORMANCE

In a Ford Ranger GT or STX, you have plenty of muscle under the hood to deliver the performance you'd expect in a fun-tough, sporty pickup. The standard 2.9 liter engine is a multiple-port electronically fuel-injected V-6 rated at 140 horsepower.* And for 1987 this powerful V-6 is equipped with a system that alerts you when the oil level is lower than normal.

At the heart of the 2.9 liter V-6 is a multiple-port electronic fuel injection (EFI) system governed by the Ford-designed EEC-IV engine control computer.

As each cylinder receives a high-pressure charge of fuel from its own injector, the EEC-IV computer collects information related to conditions such as throttle position, intake air and engine coolant temperatures, and barometric pressure. This information is then processed by the computer to control the fuel-air mixture and spark timing to optimize power, response and efficiency.

2.3L GAS OR TURBO-DIESEL PERFORMANCE

The 2.3 liter I-4 gas-powered engine features multiple-port electronic fuel injection and EEC-IV computer controls — the same system that the 2.9 liter V-6 is equipped with. Standard in the Ranger Custom and XLT series, this sophisticated powerplant delivers excellent 4-cylinder performance and efficiency.

The 2.3 liter turbo-diesel delivers turbocharged power when you need it along with the high fuel economy the diesel engine is noted for. This husky diesel is equipped with electronically controlled glow plugs which eliminate the "wait-to-start" time delay before start-up. It also includes an in-line fuel heater and engine block heater, plus a tachometer and extra sound insulation. Turbo-diesel performance is available in Ranger Regular Cab 4x2 and 4x4 models with Custom trim (except in California).



Head out for a weekend of boating pleasure in a fun-tough Ford Ranger.

RANGER FOR RECREATION

Tow a boat or trailer and extend Ranger's fun-tough capabilities even further. A properly equipped Regular Cab model has a maximum towing rating of 5,600 pounds.** For towing applications, power your Ranger with the 2.9 liter EFI V-6 engine and 4-speed Automatic Overdrive transmission, then equip it with the specified rear axle ratio, Super Engine Cooling Package, and Payload Package #2.

Make your Ranger a complete recreational vehicle. With the optional Camper Package for Regular Cab 4x2 and 4x4 models, you can outfit your Ranger Custom or XLT with an aftermarket camper. The package includes: stabilizer bars (front stabilizer bar standard on 4x4), heavy-duty front springs, heavy-duty rear springs (4x4), Payload Package #3 (4x2) or Payload Package #2 (4x4), and P205/75R14SL BSW all-season steel-belted radial tires (4x2).

For further information on recommended equipment for trailer towing and camper applications, pick up a copy of the 1987 Ford Recreation Vehicles catalog at your Ford Dealer.



Ford Ranger is ideal for recreation and leisure, because it's fun-tough and versatile.



Touch-Drive electric shift option

TOUCH-DRIVE ELECTRIC SHIFT TRANSFER CASE 4x4 OPTION

Touch-Drive offers the ultimate in convenience for 4-wheel driving enjoyment. You can shift "on the fly" from 2-wheel high to 4-wheel high and back at the touch of a push-button at any speed. The push-button controls are conveniently located in an overhead console.

Touch-Drive has other great features as well. Two special electrical interlocks prevent possible powertrain damage that might otherwise be caused by a mis-shift between 4-high and 4-low. Shifting into or out of 4-low can only be done when the vehicle is either stopped or moving below 3 mph with the manual transmission clutch disengaged or the automatic transmission in neutral position. Also, the automatic locking hubs engage instantly because Touch Drive utilizes an innovative magnetic clutch that spins up the front drive system from zero to driving speed in milliseconds.

MANUAL 4x4 LOCKING HUBS

Ranger 4x4's standard free-running front hubs are the manual locking type. When the wheel hubs are locked, you can shift "on the fly" from 2-wheel high to 4-wheel high and back to suit driving conditions.

WHAT IT ALL ADDS UP TO

Ford Ranger is the product of a long tradition of engineering excellence, one reason why Ford has been first in total truck sales for the past 17 years.†

From the sporty GT and STX to the value-packed XLT and practical Custom series, Ford Ranger puts total performance at your command.

GAS MILEAGE

1987 EPA mileage estimates were not available at the time this catalog was approved for printing. As soon as EPA figures are released, your Ford Dealer will be among the first to receive this information and will be happy to pass it along to you.

*Based on SAE Standard J-1349.

**Ranger Regular Cab towing weights, reduced by passenger and cargo weight in the towing vehicle: 5,600 pounds for 4x2 model with 4.10 rear axle ratio; 5,300 pounds for 4x4 model with 4.10 rear axle ratio. Towing weights are less with SuperCab model.

†Based on cumulative R. L. Polk & Company registrations from 1969 through May, 1986.

Some equipment shown on these pages may be optional. See options list on page 17.



Twin-Traction Beam independent front suspension (Twin-I-Beam system on 4x2)

FORD RANGER SPECIFICATIONS AND DIMENSIONS

RANGER 4x2

Equipment		107.9" WB	113.9" WB	125" WB SuperCab
GVWR	Max.	4,260 lb. ⁽¹⁾	4,300 lb. ⁽¹⁾	4,620 lb.
Frame	Std.	Ladder-type	Ladder-type	Ladder-type
Axles, Front	Std.	2,200 lb.	2,200 lb.	2,400 lb.
Axles, Rear	Std.	2,750 lb.	2,750 lb.	2,750 lb.
	Opt.	2,750 lb. LS	2,750 lb. LS	2,750 lb. LS
Brakes	Std.	Power ⁽²⁾	Power ⁽²⁾	Power
Engine Fan Clutch	Std.	Viscous-type	Viscous-type	Viscous-type
Electrical:				
Battery (amp-hr.)	Std.	45 maintenance-free ⁽³⁾	45 maintenance-free ⁽³⁾	45 maintenance-free ⁽³⁾
	Opt.	71 maintenance-free	71 maintenance-free	71 maintenance-free
Alternator (amp)	Std.	40 (60 w/AC)	40 (60 w/AC)	40 (60 w/AC)
Fuel Capacity (gal.)	Std.	15.2	17.0	14.5
	Opt.	—	30.0 (dual tanks)	27.5 (dual tanks)
Nominal Box Length	Std.	6 ft.	7 ft.	6 ft.
Shock Absorbers	Std.	HD gas-pressurized	HD gas-pressurized	HD gas-pressurized
Computer-selected springs (combined rating @ ground)				
Front coil springs	Std.	1,835 lb.	1,835 lb.	1,910 lb.
Rear leaf springs	Std.	2,052 lb.	2,052 lb.	2,396 lb.
Stabilizer Bar	Std.	—	—	Front
	Opt.	Front/Rear ⁽⁴⁾	Front/Rear ⁽⁴⁾	Rear ⁽⁴⁾
Steering (no-lube linkage)	Std.	Manual	Manual	Power
	Opt.	Power	Power	—
Curb-to-curb turning diameter	Std.	36.6 ft.	38.4 ft.	41.8 ft.
Wheels: Type/Rim	Std.	5-Hole/14x5.0	5-Hole/14x5.0	5-Hole/14x5.5
Tires	Std.	5 P195/75x14SL ⁽⁵⁾ BSW all-season	5 P195/75Rx14SL BSW all-season	5 P195/75Rx14SL BSW all-season
	Opt.	Steel-belted radials in sizes to match GVWR requirements. Use adequate tires for type of service. Consult your Ford Dealer.		

LS = Limited Slip. (1) 4,460 lb. (107.9" WB) and 4,500 lb. (113.9" WB) available and included in optional Camper Package only. (2) Manual brakes on 107.9" WB Ranger "S" series. Delete option available with Custom series. (3) 54 amp-hr. maintenance-free battery available and included as standard only with the 2.3 liter EFI 4-cyl. engine with Automatic Overdrive transmission and with the 2.9 liter EFI V-6 engine. 71 amp-hr. included in SuperCab with XLT or STX trim. (4) Available and included in optional Handling Package or Regular Cab Camper Package only. Handling Package is standard in Ranger STX Regular Cab and SuperCab 4x2 and Ranger GT 4x2. (5) 4 P185/75Rx14SL all-season steel-belted radial tires with limited-service spare in Ranger "S" series.



RANGER 4x4

Equipment		107.9" WB	113.9" WB	125" WB SuperCab
GVWR	Max.	4,480 lb.	4,500 lb.	4,740 lb.
Frame	Std.	Ladder-type	Ladder-type	Ladder-type
Axles, Front	Std.	2,750 lb.	2,750 lb.	2,750 lb.
Axles, Rear	Std.	2,750 lb.	2,750 lb.	2,750 lb.
	Opt.	2,750 lb. LS	2,750 lb. LS	2,750 lb. LS
Brakes	Std.	Power	Power	Power
Transfer Case	Std.	2-speed manual	2-speed manual	2-speed manual
	Opt.	"Touch-Drive"	"Touch-Drive"	"Touch-Drive"
Engine Fan Clutch	Std.	Viscous-type	Viscous-type	Viscous-type
Electrical:				
Battery (amp-hr.)	Std.	45 maintenance-free ⁽¹⁾	45 maintenance-free ⁽¹⁾	45 maintenance-free ⁽¹⁾
	Opt.	71 maintenance-free	71 maintenance-free	71 maintenance-free
Alternator (amp)	Std.	40 (60 w/AC)	40 (60 w/AC)	40 (60 w/AC)
Fuel Capacity (gal.)	Std.	15.2	17.0	14.5
	Opt.	—	30.0 (dual tanks)	27.5 (dual tanks)
Nominal Box Length	Std.	6 ft.	7 ft.	6 ft.
Shock Absorbers	Std.	HD gas-pressurized	HD gas-pressurized	HD gas-pressurized
Computer-selected springs (combined rating @ ground)				
Front coil springs	Std.	1,940 lb.	1,940 lb.	2,085 lb.
Rear leaf springs	Std.	2,190 lb.	2,190 lb.	2,594 lb.
Stabilizer Bar	Std.	Front	Front	Front
	Opt.	Rear ⁽²⁾	Rear ⁽²⁾	Rear ⁽²⁾
Steering (no-lube linkage)	Std.	Power	Power	Power
Curb-to-curb turning diameter	Std.	36.4 ft.	38.2 ft.	41.5 ft.
Wheels: Type/Rim	Std.	5-Hole/15x5.0	5-Hole/15x5.0	5-Hole/15x5.5
	Opt.	4 cast alum. 15x6.0	4 cast alum. 15x6.0	4 cast alum. 15x6.0
Tires	Std.	5 P195/75Rx15SL BSW all-season	5 P195/75Rx15SL BSW all-season	5 P195/75Rx15SL BSW all-season
	Opt.	Steel-belted radials in sizes to match GVWR requirements. Use adequate tires for type of service. Consult your Ford Dealer.		

LS = Limited Slip. (1) 54 amp-hr. maintenance-free battery available and included as standard only with the 2.9 liter EFI V-6 engine. 71 amp-hr. included in SuperCab with XLT or STX trim. (2) Available and included in optional Handling Package or Regular Cab Camper Package only. Handling Package is standard in Ranger STX SuperCab 4x4. STX High Rider Regular Cab 4x4 has a unique handling suspension (see pages 10-11).



REGULAR CAB PAYLOAD PACKAGE SELECTOR

Model	Package No.	Payload ⁽¹⁾	GVWR	Tires (Minimum)
4x2 SWB	1 Std.	1,220 lb.	3,820 lb.	P195/75Rx14SL ⁽²⁾
4x2 SWB	2 Opt. ⁽⁴⁾	1,630 lb.	4,260 lb.	P195/75Rx14SL
4x2 SWB	3 Opt. ⁽⁴⁾	1,780 lb.	4,460 lb.	P205/75Rx14SL
4x2 LWB	1 Std.	1,220 lb.	3,860 lb.	P195/75Rx14SL
4x2 LWB	2 Opt. ⁽²⁾	1,630 lb.	4,300 lb.	P195/75Rx14SL
4x2 LWB	3 Opt. ⁽⁴⁾	1,765 lb.	4,500 lb.	P205/75Rx14SL
4x4 SWB	1 Std.	1,225 lb.	4,060 lb.	P195/75Rx15SL
4x4 SWB	2 Opt. ⁽²⁾	1,625 lb.	4,480 lb.	P195/75Rx15SL
4x4 LWB	1 Std.	1,210 lb.	4,100 lb.	P195/75Rx15SL
4x4 LWB	2 Opt. ⁽²⁾	1,590 lb.	4,500 lb.	P195/75Rx15SL

SWB = 107.9-in. short wheelbase. LWB = 113.9-in. long wheelbase. (1) Maximum allowable weight of people, cargo, body and equipment. Reduced by optional equipment weight. (2) P185/75Rx14SL in Ranger "S" series, available in short wheelbase only. (3) Available for Custom (861A) and XLT (864M) series. (4) Available and included only in optional Camper Package (4x2). (5) Available for Custom (861A) and XLT (864M) series. Included in optional Camper Package (4x4).

SUPERCAB PAYLOAD PACKAGE SELECTOR

Model	Package No.	Payload ⁽¹⁾	GVWR	Tires (Minimum)
4x2 LWB	1 Std.	1,330 lb.	4,280 lb.	P195/75Rx14SL
4x2 LWB	2 Opt. ⁽²⁾	1,625 lb.	4,620 lb.	P205/75Rx14SL
4x4 LWB	1 Std.	1,340 lb.	4,480 lb.	P195/75Rx15SL
4x4 LWB	2 Opt. ⁽²⁾	1,615 lb.	4,800 lb.	P205/75Rx15SL

LWB = 125-in. long wheelbase. (1) Maximum allowable weight of people, cargo, body and equipment. Reduced by optional equipment weight. (2) Available for Custom (850A) and XLT (853M) series.

PAYLOAD SELECTOR FOR OPTIONAL TURBO DIESEL ENGINE (REGULAR CAB WITH CUSTOM TRIM)

Model	Package No.	Payload ⁽¹⁾	GVWR	Tires (Minimum)
4x2 LWB	1 Std.	1,550 lb.	4,440 lb.	P195/75Rx14SL
4x4 LWB	1 Std.	1,345 lb.	4,500 lb.	P195/75Rx15SL

LWB = 113.9-in. long wheelbase. (1) Maximum allowable weight of people, cargo, body and equipment. Reduced by optional equipment weight.

EXTERIOR DIMENSIONS

WB	CL	BL	OAL	OAW	OAH	TW (Front)	TW (Rear)	AC
					4x2/4x4	4x2/4x4	4x2/4x4	4x2/4x4
107.9"	99.3"	76.3"	175.6"	66.9"	64.0/66.9"	55.0/56.5"	54.6/55.1"	6.6/6.8"
113.9"	99.3"	88.3"	187.6"	66.9"	63.9/66.7"	55.0/56.5"	54.6/55.1"	6.6/6.8"
125" SC	116.4"	76.3"	192.7"	66.9"	65.3/68.1"	55.0/56.5"	54.6/55.1"	6.6/6.7"

WB = Wheelbase. CL = Cab Length. BL = Pickup Box Length. OAL = Overall Length. OAW = Overall Width. OAH = Overall Height. TW = Tread Width. AC = Axle Clearance. SC = SuperCab.

INTERIOR DIMENSIONS

Interior Compartment	Regular Cab	SuperCab
Head room.....	39.2"	39.6"
Shoulder room.....	55.5"	55.5"
Hip room.....	54.8" ⁽¹⁾	54.8"
Leg room.....	42.4"	43.8"
Cargo Compartment		
Box length at floor.....		
Short wheelbase.....	72.2"	—
Long wheelbase.....	84.2"	72.2"
Maximum inside width at floor.....	54.3"	54.3"
Pickup box depth.....	16.5"	16.5"
Cargo volume — cu. ft. (no allowance for wheelhouses)		
Short wheelbase.....	37.4	—
Long wheelbase.....	43.5	37.4

(1) 55.0" in 4x4.

POWERTEAMS

Engines	Transmissions	Final Drive Ratios		
		49 States	California	High Altitude
Regular Cab 4x2		(Standard/Optional)		
2.0L 2V I-4	5-speed manual OD	3.45	—	—
2.3L EFI I-4	5-speed manual OD	3.45	3.45	3.73
	4-speed automatic OD	3.73	3.73	—
2.3L Turbo Diesel	5-speed manual OD	3.45	—	—
2.9L EFI V-6	5-speed manual OD	3.45/3.73	3.45/3.73	3.45/3.73
	4-speed automatic OD	3.45/4.10 LS	3.45/4.10 LS	3.45/4.10 LS
Regular Cab 4x4				
2.3L EFI I-4	5-speed manual OD	3.73/3.73 LS	3.73/3.73 LS	3.73/3.73 LS
2.3L Turbo Diesel	5-speed manual OD	3.45/3.73	—	—
2.9L EFI V-6	5-speed manual OD	3.45/3.73 LS	3.45/3.73 LS	3.45/3.73 LS
	4-speed automatic OD	3.73/4.10 LS	3.73/4.10 LS	3.73/4.10 LS
SuperCab 4x2				
2.3L EFI I-4	5-speed manual OD	3.73	3.73	3.73
	4-speed automatic OD	3.73	3.73	—
2.9L EFI V-6	5-speed manual OD	3.45/3.73	3.45/3.73	3.45/3.73
	4-speed automatic OD	3.45/4.10 LS	3.45/4.10 LS	3.45/4.10 LS
SuperCab 4x4				
2.9L EFI V-6	5-speed manual OD	3.45/3.73 LS	3.45/3.73 LS	3.45/3.73 LS
	4-speed automatic OD	3.73/4.10 LS	3.73/4.10 LS	3.73/4.10 LS

LS = Limited Slip rear axle option.

POWERTEAM AVAILABILITY BY TRIM SERIES

Engines	Regular Cab					SuperCab		
	"S"	Custom	XLT	STX	GT	Custom	XLT	STX
2.0L 2V I-4	S ⁽¹⁾	—	—	—	—	—	—	—
2.3L EFI I-4	—	S	S	—	—	S ⁽²⁾	S ⁽²⁾	—
2.3L Turbo Diesel I-4	—	O	—	—	—	—	—	—
2.9L EFI V-6	—	O	O	S	S	O ⁽³⁾	O ⁽³⁾	S
Transmissions								
5-speed Manual OD	S	S	S	S	S	S	S	S
4-speed Automatic OD ⁽⁴⁾	—	O	O	O	O	O	O	O

S = Standard O = Optional (1) 2.3L EFI standard in California and High Altitude areas. (2) Standard and available only in 4x2. (3) Optional in 4x2; standard in 4x4. (4) Not available with 2.3L turbo-diesel; not available with 2.3L EFI in 4x4 model. See your dealer for availability in Ranger GT.

RANGER TIRE SELECTOR

Tires	"S"	Custom	XLT	STX	GT
P185/75Rx14SL BSW all-season	S				
P195/75Rx14SL BSW all-season — 4x2		S			
P195/75Rx15SL BSW all-season — 4x4		S			
P205/75Rx14SL BSW all-season — 4x2		O	S		
P195/75Rx14SL BSW all-terrain — 4x2		O			
P195/75Rx15SL BSW all-terrain — 4x4		O	S		
P205/70Rx14SL OWL Eagle GT — 4x2				S	
P215/75Rx15SL OWL off-road — 4x4 ⁽¹⁾		O	O	S	
P215/70Rx14SL OWL Eagle GT — 4x2					S
P205/75Rx15SL OWL off-road — 4x4 ⁽²⁾		O	O		

S = Standard O = Optional BSW = Black sidewalls OWL = Outline white letters SC = SuperCab (1) Optional for Custom and XLT SuperCab only. (2) Only optional tire available for Custom series with optional 2.3L turbo-diesel engine.



PREFERRED EQUIPMENT PACKAGES

AN EASY WAY TO BUY

The Ranger XLT Regular Cab pictured at left illustrates the high level of standard equipment in this series. Included is Preferred Equipment Package 864M, with added features that make Ranger XLT an outstanding value.

RANGER XLT REGULAR CAB (WITH PREFERRED EQUIPMENT PACKAGE 864M):

- 2.3 liter EFI I-4 engine with 5-speed manual overdrive transmission
- Power steering
- Tinted glass—complete
- Tachometer
- Electronic AM/FM stereo/digital clock
- Deluxe Two-Tone paint (may be deleted for credit and replaced with dual upper pinstripes and wheelip moldings)
- Knitted vinyl contoured bench seat
- Cloth headliner
- Chrome front bumper with rub strip
- Chrome rear step bumper with rub strip
- Sliding rear window
- Deluxe wheel trim
- Other XLT features (see page 8)

Plus the following standard features:

- Twin-I-Beam (4x2) or Twin-Traction Beam (4x4) independent front suspension
- Gas-pressurized shock absorbers
- Halogen headlights
- Power brakes (except Ranger "S")
- Ammeter, engine temperature and oil pressure gauges
- Trip odometer
- Interval windshield wipers (except Ranger "S")
- Color-keyed safety belts with comfort regulator feature

Left: Ranger XLT Regular Cab in Deep Shadow Blue Clearcoat Metallic/Silver Clearcoat Metallic.

Some equipment shown may be optional. See options list on page 17.

Preferred Equipment Packages are groups of popular features. By combining them into groups, we simplify the ordering procedure. All you have to do is: (1) Choose your cab type and model (Regular Cab or SuperCab, 4x2 or 4x4); (2) Decide on the trim level ("S," Custom, XLT, STX or GT) with the Preferred Equipment Package from the chart below that includes the

features you want. For instance, Ranger XLT is available in two Preferred Equipment Packages numbered 864M (Regular Cab) and 853M (SuperCab). If you would like to further personalize your new Ranger XLT, refer to page 17, find the Preferred Equipment Package number under XLT Trim, and select from the options listed under it.

RANGER REGULAR CAB (4x2/4x4)	PREFERRED EQUIPMENT PACKAGES					
	"S" 4x2	Custom		XLT	STX	GT 4x2
	859A	860A	861A	864M	865A	866M
2.0L I-4/5-speed manual	• ⁽¹⁾					
2.3L EFI I-4/5-speed manual			•	•		
2.9L EFI V-6/5-speed manual					•	•
2.3L I-4 turbo diesel/5-speed manual		•				
Power steering ⁽²⁾		•		•	•	•
Handling Package ⁽³⁾		•			•	•
Rear axle ratio upgrade					•	•
Tinted glass—complete				•	•	•
Tachometer		•		•	•	•
Electronic AM/digital clock ⁽⁴⁾		•	•			
Electronic AM/FM stereo/digital clock				•	•	
Electronic AM/FM stereo/cassette/digital clock ⁽⁴⁾						•
Deluxe Two-Tone paint ⁽⁵⁾				•		
Vinyl bench seat	•	•	•			
Knitted vinyl contoured bench seat				•		
Cloth bucket seats					•	
Sport cloth bucket seats						•
Cloth headliner				•	•	•
Sliding rear window				•		
Chrome front bumper with rub strip				•		
Chrome rear step bumper with rub strip				•		
Black rear step bumper		•			•	
Deluxe wheel trim				•		
Cast aluminum wheels						•
Standard tires — See Ranger Tire Selector on page 13.						

Standard tires — See Ranger Tire Selector on page 13.
Note: Ranger "S" available in 107.9" wheelbase 4x2 model only. Ranger GT available in 4x2 model only. (1) 2.3L EFI engine is standard in Ranger "S" in California and High Altitude areas. (2) Included in all Regular Cab 4x4 models. (3) Includes front and rear stabilizer bars. STX High Rider Regular Cab 4x4 has a unique handling suspension system (see pages 10-11). (4) May be deleted for credit. (5) May be deleted for credit from XLT and replaced with dual upper pinstripes and wheelip moldings.

RANGER SUPERCAB (4x2/4x4)	Custom	XLT	STX
	850A	853M	854A
2.3L EFI I-4/5-speed manual ⁽¹⁾	•	•	
2.9L EFI V-6/5-speed manual			•
Power steering	•	•	•
Handling Package ⁽²⁾			•
Rear axle ratio upgrade			•
71 amp-hr. maintenance-free battery		•	
Tinted glass—complete	•		•
Tachometer		•	•
Electronic AM/digital clock ⁽³⁾	•		
Electronic AM/FM stereo/digital clock		•	•
Deluxe Two-Tone paint ⁽⁴⁾		•	
Knitted vinyl 60/40 split bench seat	•		
Cloth 60/40 split bench seat		•	
Rear vinyl jump seats			
Cloth dual Captain's Chairs			•
Cloth headliner	•	•	•
Cargo cover		•	•
Chrome front bumper with rub strip		•	
Chrome rear step bumper with rub strip			
Black rear step bumper			•
Deluxe wheel trim		•	

Standard tires — See Ranger Tire Selector on page 13.
(1) 2.3L EFI I-4 standard and available only in 4x2 with Custom or XLT trim; 2.9L EFI V-6 standard in 4x4. (2) Includes rear stabilizer bar. (3) May be deleted for credit. (4) May be deleted for credit from XLT and replaced with dual upper pinstripes and wheelip moldings.

■ = Optional ● = Included in equipment packages (see page 15 for additional standard features)						
RANGER REGULAR CAB (4x2/4x4)	PREFERRED EQUIPMENT PACKAGES					
	"S" 4x2 859A	Custom 860A	XLT 861A	STX 864M	GT 4x2 865A	866M
2.9L EFI V-6			■	■	■	■
Automatic Overdrive transmission ⁽¹⁾			■	■	■	■
Touch-Drive electric shift—4x4			■	■	■	■
Air conditioning		■	■	■	■	■
Power steering—4x2		●	■	●	●	●
Speed control/tilt steering wheel			■	■	■	■
Cloth contoured bench seat			■	■	■	■
Cloth 60/40 split bench seat				■	■	■
Sport cloth bucket seats					■	●
Cloth headliner			■	●	●	●
Tachometer	●		■	■	■	●
Electronic AM/FM stereo/digital clock			■	■	■	●
Electronic AM/FM stereo/cassette/digital clock			■	■	■	●
Power windows and door locks				■	■	■
Bright low-mount swingaway mirrors		●	■	■		
Tinted glass—complete		■	■	●	●	●
Black rear step bumper		●	■			■
Chrome Package ⁽²⁾				■	■	
Sport Appearance Package (see page 6)					■	
Deluxe Two-Tone paint			■	●		
Sliding rear window				●	■	■
Handling Package ⁽³⁾		●	■	■	●	●
Heavy-duty front suspension—4x4			■	■		
Auxiliary fuel tank			■	■		
Limited Slip rear axle			■	■		●
Camper Package (see page 11)			■	■		
Super engine cooling			■	■	■	■
Cast aluminum wheels—4x4			■	■	■	
Deluxe wheel trim			■	●		
Other options: Payload Package #2 (see page 13); Tires (see page 13).						

RANGER SUPERCAB (4x2/4x4)	Custom 850A	XLT 853M	STX 854A
2.9L EFI V-6 ⁽⁴⁾	■	■	●
Automatic Overdrive transmission	■	■	■
Touch-Drive electric shift—4x4	■	■	■
Air conditioning	■	■	■
Speed control/tilt steering wheel	■	■	■
Knitted vinyl 60/40 split bench seat	●	■	
Cloth 60/40 split bench seat	■	●	■
Cloth dual Captain's Chairs		■	●
Rear vinyl jump seats	■	●	■
Cargo cover	■	●	
Tachometer	■	●	●
Electronic AM/FM stereo/digital clock	■	■	■
Electronic AM/FM stereo/cassette tape player/digital clock	■	■	■
Power windows and door locks		■	■
Bright low-mount swingaway mirrors		■	
Black rear step bumper	■		●
Chrome rear step bumper	■	●	
Chrome Package ⁽²⁾			■
Chrome front bumper	■	●	
Sport Appearance Package (see page 6)			■
Deluxe Two-Tone (may be deleted for credit)	■	●	
Pivoting quarter windows	■	■	■
Sliding rear window	■	■	■
Auxiliary fuel tank	■	■	
Limited Slip rear axle	■	■	
Super engine cooling	■	■	■
Cast aluminum wheels—4x4		■	■
Deluxe wheel trim	■	●	
Other options: Payload Package #2 (see page 13); Tires (see page 13).			

⁽¹⁾ 2.3L and Automatic Overdrive transmission in 4x2 only. See your dealer for Automatic Overdrive availability in Ranger GT. ⁽²⁾ Includes bright bumpers with rub strips, bright low-mount swingaway mirrors, and tailgate applique. ⁽³⁾ Includes front and rear stabilizer bars (front stabilizer bar standard on 4x4). STX High Rider Regular Cab 4x4 has a unique handling suspension system (see pages 10-11). ⁽⁴⁾ 2.9L EFI V-6 optional in SuperCab 4x2 with Custom or XLT trim; standard in 4x4.

COLOR SELECTIONS

Exterior Paint Colors	Interior Trim Colors		
	Regatta Blue	Canyon Red	Chestnut
Raven Black		X	X
Silver Clearcoat Metallic	X	X	X
Bright Canyon Red		X	X
Alpine Green Clearcoat Metallic*			X
Light Chestnut Clearcoat Metallic			X
Dark Canyon Red		X	X
Bright Regatta Blue Clearcoat Metallic	X		
Deep Shadow Blue Clearcoat Metallic	X		X
Colonial White	X	X	X
Shadow Grey Clearcoat Metallic	X	X	
Light Chestnut*		X	X
Dark Walnut Clearcoat Metallic*			X

*Not available for GT series. Some of these paint colors are shown in this catalog. On the printed page, of course, colors are at best only representative of the originals. Your Ford Dealer can show you actual samples of paint colors as well as interior trim materials.

	
Raven Black	Silver Clearcoat Metallic
	
Bright Canyon Red	Alpine Green Clearcoat Metallic
	
Light Chestnut Clearcoat Metallic	Dark Canyon Red
	
Bright Regatta Blue Clearcoat Metallic	Deep Shadow Blue Clearcoat Metallic
	
Colonial White	Shadow Grey Clearcoat Metallic
	
Light Chestnut	Dark Walnut Clearcoat Metallic

1987 Ford Ranger



PERSONALIZED OPTIONS

In addition to the Preferred Equipment Packages, Ranger offers a wide selection of individual options which allow you to equip your vehicle even more to your particular needs.

Once you've chosen the cab style, series and the Preferred Equipment Package you desire, find your Preferred Equipment Package number in the chart on page 17, then choose from the options listed under it.

Options and their availability are subject to change during the year. Some options may be subject to ordering restrictions. Your Ford Dealer can give you complete details.

Following are descriptions of selected options that may be of particular interest to you.

ELECTRONIC AM/FM STEREO RADIO WITH CASSETTE TAPE PLAYER

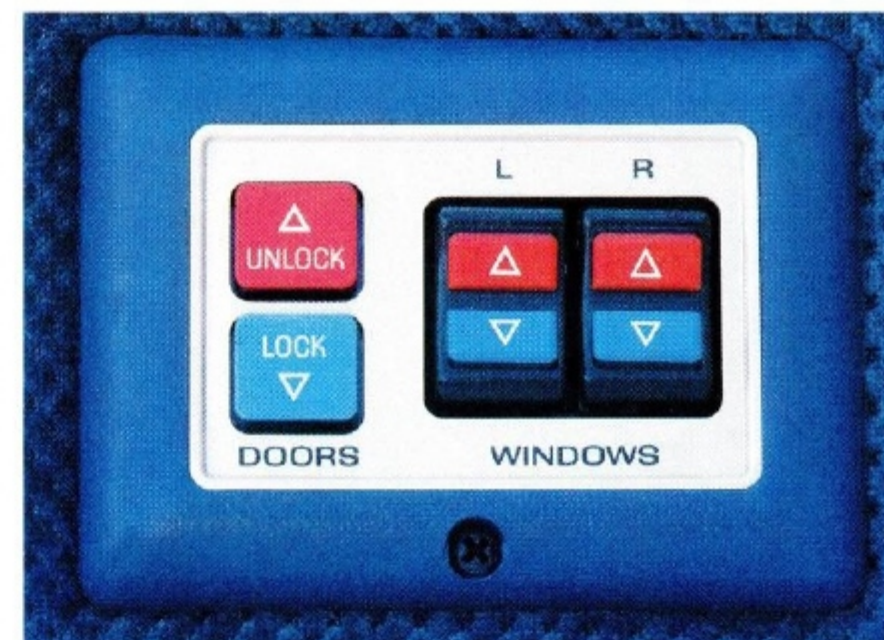
Among the features of this electronic stereo system are lighted liquid crystal display and illuminated controls, fully electronic manual or seek tuning, memory for 18 station settings (6 AM and 12 FM), and separate bass and treble controls. The cassette tape player features auto-reverse and Dolby® noise reduction. Also included are balance and fader controls for the front and rear speakers. All Ranger sound systems for 1987 include a digital clock.

AUTOMATIC OVERDRIVE TRANSMISSION

This is a Ford-engineered 4-speed automatic overdrive (A4LD) transmission with electronically controlled converter clutch, which automatically engages during steady-speed operation in fourth gear and the upper range of third gear. This eliminates power-wasting torque converter slippage for improved fuel economy, especially during highway travel. A4LD is available with the 2.3L EFI I-4 engine in 4x2 models, and with the 2.9L EFI V-6 in both 4x2 and 4x4 models.



Cast aluminum wheels (4x4) and Deluxe wheel trim



Power windows and door locks



Electronic AM/FM stereo radio with cassette tape player



Air conditioning



Sliding rear window



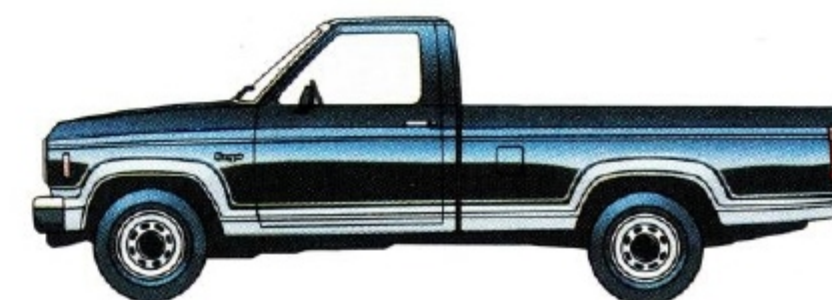
Touch-Drive 4x4 electric shift

SPEED CONTROL AND TILT STEERING WHEEL

Speed controls are within easy reach on the steering wheel and include a convenient "resume" feature that lets you return to the speed previously set at the touch of a button. The tilt wheel adjusts to the most comfortable position, makes entry and exit easy.

DELUXE TWO-TONE

Give your Ranger Custom series a distinctive two-tone style. Accent color is applied along the lower bodyside and over the wheel lips. Lower bodyside dual color tape treatment is included.



■ Body Color □ Accent Color

SAFETY AND OWNER BENEFITS

THE FORD QUALITY COMMITMENT

The Ford Quality Commitment is built on a basic and simple concept: Integrity. Integrity in the way we build our products, integrity in our dealerships' service and integrity in the treatment of our customers.

TOGETHER WE CAN SAVE LIVES

Ford Motor Company strongly encourages all passengers to use their safety belts.

In Ford Ranger, outboard front seat lap and shoulder belts have automatic retractors. And there's a seat belt for the center front passenger. Two safety belts are included in SuperCab models with dual rear jump seats.

Ford urges the use of child and infant restraints, as required by law in all states. Ford's easy-to-install Tot-Guard (for children 20 to 50 pounds) and Infant Carrier (for children up to 20 pounds) are available at all Ford Dealers. If a child restraint requires a top-tether, Ford Ranger provides special anchorages.



FORD LIFEGUARD DESIGN SAFETY FEATURES

Vehicle Operation

- Split service hydraulic brake system with warning light
- Corrosion-resistant brake lines
- Turn indicator with lane-changing signal feature
- Hazard warning flasher
- Backup lights
- Side marker lights
- Parking lights coupled with headlights
- Two-speed windshield wipers
- Windshield washers
- Dual outside rearview mirrors
- Glare-reduced instrument panel, windshield wiper arms and windshield pillars
- Uniform transmission shift quadrant with safety starting switch (on all vehicles equipped with automatic transmission)
- Continuously variable control illumination intensity (instrument cluster lighting)
- Safety hood latch system
- Function-rated windshield defroster system

- Tamper-resistant (non-reversing) odometer
- Speedometer with highlighted 55 mph

Occupant Protection

- Safety-designed front end structure
- Safety-designed roof structure
- Two-position safety door latches
- Integral lap and shoulder belts with automatic retractors for front outboard occupants
- Safety belt fastening reminder warning light and buzzer or chime for the driver's seat
- Lap belt for center front passenger
- Lap belts for rear passengers (with optional jump seats in SuperCab model only)



- Energy-absorbing steering column and steering wheel
- Energy-absorbing armrests and safety-designed door handles
- Energy-absorbing instrument panel with padding for right and center front (center front where 3-passenger bench seat is provided) passengers
- Energy-absorbing sun visors
- Safety glove box latch
- Inside yieldaway rearview mirror
- Impact-absorbing laminated safety glass windshield
- Flame-resistant interior materials
- Safety-designed coat hook
- Safety-designed radio control knobs and push buttons

Anti-Theft

- Locking steering column with key warning buzzer (with "Park" interlock or push button for key release)
- Visible vehicle identification number



Participating Ford Dealers are now offering the Lifetime Service Guarantee, which guarantees their work on your Ford vehicle for as long as you own it. This means that the covered repair is paid for once — and never again. If it ever has to be fixed again, the repairing dealer will fix it free. Free parts. Free labor. Even if the vehicle is kept a lifetime. It doesn't matter where it was purchased, or whether it's new or used; the work is still covered by the repairing dealer.

This limited warranty covers vehicles in normal use. Items not covered include routine maintenance parts, belts, hoses, sheet metal, and upholstery. Ask to see this guarantee when you visit your participating Ford Dealer.



The optional Ford Extended Service Plan covers major components on new Ford cars and trucks for longer than the vehicle's basic warranty. The cost for this added protection is so moderate that it could pay for itself the first time you need it. Your Ford Dealer has full details.



Ford Motor Credit Company is interested in helping to fill the transportation needs of every qualified buyer of a Ford product. A participating dealer can arrange financing terms or a Red Carpet Lease® tailored to your circumstance. Ford Credit has offices conveniently located throughout the United States.



QUALITY REPLACEMENT PARTS FROM FORD

Genuine Ford and Motorcraft original equipment replacement parts meet the same high standards as those installed in production. They are your best assurance of quality and long-term satisfaction.

SCHEDULED MAINTENANCE

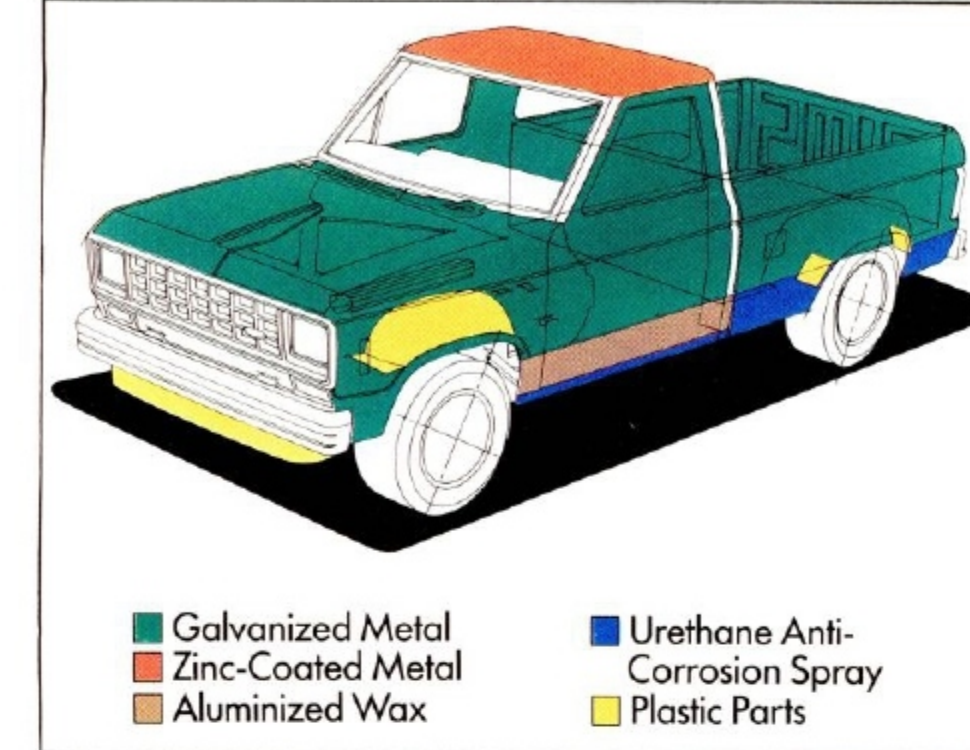
Here are some examples of scheduled maintenance intervals for the 1987 Ranger with gasoline engine. For complete maintenance recommendations, refer to the Ranger Scheduled Maintenance Booklet.

Engine oil and filter change	each 7,500 miles or 6 months
Spark plug change	each 30,000 miles
Air filter replacement	each 30,000 miles
Engine coolant replacement	each 30,000 miles or 3 years

GREATER CORROSION PROTECTION

Ford takes tougher measures than ever to protect its trucks from the damaging effects of corrosion. Ford Ranger for 1987 offers additional improved corrosion protection including two-sided galvanized steel as well as galvanized steel for some body parts which were previously untreated.

These improvements, in addition to special treatments such as aluminized wax, applications of urethane spray, and the use of non-metallic parts which cannot corrode, are further evidence of Ford's continuing commitment to building high-quality trucks.



FORD-PAID REPAIR PROGRAMS AFTER THE WARRANTY PERIOD

Sometimes Ford offers adjustment programs to pay all or part of the cost of certain repairs. These programs are intended to assist owners and are in addition to the warranty or to required recalls. Ask Ford or your dealer about such programs relating to your Ford or Lincoln-Mercury vehicle.

To get copies of any adjustment program for your vehicle or the vehicle of interest to you: Call Ford toll-free at 1-800-241-3673. Alaska/Hawaii call 1-800-241-3711 and in Georgia call 1-800-282-0959.

Or write Ford at:
Ford Customer Information System
Post Office Box 95427
Atlanta, Georgia 30347

We'll need your name and address; year, make and model vehicle, as well as engine size; and whether you have a manual or automatic transmission.

TECHNICAL SERVICE BULLETINS

All vehicles need repairs during their lifetime. Sometimes Ford issues technical service bulletins (TSBs) and easy-to-read explanations describing unusual engine or transmission conditions which may lead to costly repairs, the recommended repairs, and new repair procedures. Often a repair now can prevent a more serious repair later. Ask Ford or your dealer for any such TSBs and explanations relating to your Ford or Lincoln-Mercury vehicle.

To get copies of these technical service bulletins and explanations for your vehicle or the vehicle of interest to you: Call Ford toll-free at 1-800-241-3673. Alaska/Hawaii call 1-800-241-3711 and in Georgia call 1-800-282-0959.

Or write Ford at:
Ford Customer Information System
Post Office Box 95427
Atlanta, Georgia 30347

We'll need your name and address; year, make and model vehicle, as well as engine size; and whether you have a manual or automatic transmission.

OPTIONS AVAILABILITY

Options shown or described in this catalog are available at extra cost and may be offered only in combination with other options and subject to additional ordering requirements or limitations.

PRODUCT CHANGES

Ford Division reserves the right to change product specifications at any time without incurring obligations.

"ASK YOUR FORD DEALER"

Following publication of this catalog, certain changes in standard equipment, options, prices and the like, or product delays, may have occurred which would not be included in these pages. Your Ford Dealer is your best source for up-to-date information.

BUY OR LEASE A NEW FORD RANGER

**BUY OR LEASE
A NEW FORD RANGER**



FDT-8711P Litho in U.S.A. 8/86

