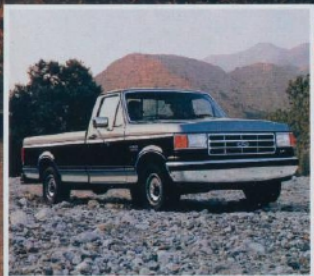


1987 Ford Trucks

**F-SERIES • RANGER • BRONCO • BRONCO II
AEROSTAR • ECONOLINE VAN/CLUB WAGON**





BEST-BUILT AMERICAN TRUCKS SIX YEARS RUNNING

"Quality is Job 1." In fact, for the past six consecutive years, Ford quality has led all other American automotive companies. This is based on an average of owner-reported problems in the first three months of service on '86 models, and in a six-month period on '81-'85 models designed and built in North America.

1987 FORD F-SERIES 4x2/4x4

Ford F-Series has been the most popular full-size pickup across America for the past ten years.* For 1987, F-Series pickups are designed and engineered to be greater all-around performers than ever before.

A NEW F-SERIES INSIDE AND OUT

F-Series has been redesigned all around, and not just for the sake of appearance. Its lower aerodynamic shape, aero halogen headlights, larger wheel openings and strong tailgate design are among F-Series' many functional improvements. A lot of rethinking has also gone into improving the interior environment. The most notable feature is the all-new instrument panel. It has a driver-oriented design with a centrally located speedometer, a full complement of gauges

Left: F-Series F-150 XLT Lariat Styleside in Bright Canyon Red/Colonial White.
Right: XLT Lariat interior in Canyon Red.
Below left: F-Series F-150 XLT Lariat SuperCab in Desert Tan Metallic/Light Chestnut.
Below right: F-Series F-350 XLT Lariat Crew Cab in Dark Shadow Blue Metallic/Colonial White.
Some equipment shown on these pages may be optional.



that are backlit for excellent readability, four vent registers, plus side window demisters. Seat trims are also new, including the re-styled flight bench seat in the XLT Lariat Regular Cab model.

IMPROVED PERFORMANCE UNDER THE HOOD

F-Series for 1987 is out to set new standards of performance in full-size pickups. The 4.9 liter, for years the industry's biggest Six in its class, now features a multiple-port electronically controlled fuel injection system (EFI). The 4.9L EFI delivers more horsepower and torque than the previous carbureted engine. In F-Series you also have a line of powerful V-8's to choose from: the 5.0L multiple-port EFI, 5.8L HO, 7.5L, and the 6.9L true-truck diesel.

AN INDUSTRY FIRST IN BRAKING PERFORMANCE

The new electronically controlled antilock rear brake system is standard in F-Series for 1987. It's designed to help you come to a straight stop when you're driving an F-Series 4x2 or a 4x4 model in the 2-wheel drive mode.

Anytime rear wheel lock-up is detected, this advanced computer-controlled rear brake system helps inhibit complete rear wheel lock-up under most operating conditions.

IMPROVED RIDE QUALITY

F-Series is the only full-size pickup with the Ford-famous Twin-I-Beam independent front suspension (4x2) and the Twin-Traction Beam system (4x4). For 1987, these suspensions feature adjustable caster and camber. F-Series also has gas-pressurized shock absorbers and recalibrated rear springs for ride smoothness. And all-season steel-belted radial tires are standard on

every F-Series model (F-150, F-250 and F-350) for added traction in year-round weather conditions.

IMPROVEMENTS IN SERVICEABILITY

The new F-Series is designed for improved serviceability. A few examples: The 4.9L and 5.0L multiple-port EFI engines feature a new serpentine single accessory belt drive with self-tensioning idler pulley. Impact-resistant aero-design headlights have replaceable halogen bulbs that can easily be removed from under the hood. A simplified method of caster/camber adjustment can significantly reduce service alignment time.

A COMPLETE LINE OF F-SERIES PICKUPS

Choose the top-of-the-line XLT Lariat, stylish XL, or the hardworking Custom series. In F-Series you have a cab style to fit your needs—the Regular Cab model with Styleside or Flareside boxes, the roomy Styleside SuperCab, or the 4-door 6-passenger Styleside Crew Cab.

*Based on calendar year retail deliveries for the past ten years.



1987 FORD RANGER 4x2/4x4

Whether you drive a compact pickup for driving enjoyment or for the great versatility it offers, the fun-tough Ford Ranger has everything it takes to be a winner on whatever road you travel.

SPORTY RANGER STX WITH THE NEW HIGH RIDER 4x4

Ranger STX has all the muscle you'd expect in a fun-tough, sporty compact pickup. Under the hood you have 140 horsepower* at your command in a 2.9 liter multiple-port electronically fuel-injected and computer-controlled V-6. Take the wheel of the new Ranger STX Regular Cab 4x4 called the High Rider. It's engineered with a unique suspension system that raises the vehicle height and delivers improved handling performance over last year's model. There's also the STX SuperCab 4x4 model equipped with a Handling Package. Both STX 4-wheelers ride on P215/75R15SL off-road tires.

Or make your Ranger the STX 4x2. It's powered by the 2.9 liter EFI engine, is equipped with a Handling Package, and rides on P205/70R14SL Eagle GT all-season tires with outline white letters.

Far right: Ranger STX SuperCab 4x4 in Bright Canyon Red. Shown with optional Sport Appearance Package. Right: Ranger STX interior in Canyon Red. Below left: Ranger XLT interior with available 60/40 split bench seat in Regatta Blue. Below right: Ranger XLT Regular Cab in Bright Regatta Blue Clearcoat Metallic. Some equipment shown on these pages may be optional.



There are other features as well that distinguish your Ranger as an STX: Two-Tone paint with unique tape striping (4x2) or unique bodyside tape treatment (4x4). Special blackout trim, too. Reclining cloth bucket seats (Regular Cab) or reclining cloth Captain's Chairs (SuperCab). Tachometer cluster, leather-wrapped steering wheel, and much more!

OUTSTANDING RIDE QUALITY FEATURES

Ranger features Ford's famous Twin-I-Beam (4x2) or Twin-Traction Beam (4x4) independent front suspension system engineered for excellent ride and handling. Every Ranger also comes equipped with gas-pressurized shock absorbers which help provide a ride that's smooth over normal road conditions, yet firm enough over rough roads.

MANUAL OR TOUCH-DRIVE 4x4 SHIFTING

Ranger 4x4 offers you a choice of manual locking front hubs or Ford's Touch-Drive electric shift transfer case.

Touch-Drive offers the ultimate in convenience for 4-wheel driving enjoyment. You can shift "on the fly" from 2-wheel high to 4-wheel high and back at any speed. The push-button controls are located in an overhead console, which also includes dual reading lamps.

Touch-Drive is engineered with other great features as well, including two special electrical interlocks which prevent the possibility of powertrain damage



that might otherwise be caused by a mis-shift between 4-high and 4-low.

A RANGER TO MATCH YOUR SPECIAL NEEDS

Ranger is available in a wide range of series: The "fun-tough" V6-powered STX. The Ranger XLT equipped for outstanding value. The hardworking Ranger Custom. And the highly affordable Ranger "S" Regular Cab. Choose a Regular Cab with Custom Trim and you can power it with Ranger's optional 2.3L turbo-diesel engine.

With Ranger you also have a choice of two cab styles: Ranger Regular Cab, or the SuperCab with nearly 17 inches of additional cab length for your tools, camping or fishing gear — whatever you wish to carry. With SuperCab you can order optional rear jump seats that make this roomy, versatile Ranger a 5-passenger compact pickup.

*Based on SAE Standard J-1349.





1987 FORD BRONCO AND BRONCO II

The full-size Bronco and the compact Bronco II — these rugged utility vehicles from Ford have always been great performers, on and off the road. And for 1987 they feature significant engineering improvements.

Bronco and Bronco II offer exceptional versatility as well. They're roomy and comfortable enough to satisfy family needs, and spacious enough to carry a lot of cargo for personal or commercial purposes.

Drive a Bronco or Bronco II 4x4 — both feature Ford's Twin-Traction Beam independent front suspension. Travel 2-wheel drive around town; go 4-wheeling on those weekend excursions into rugged off-road country.

In 1987 you can make your Bronco II the new 4x2 model engineered with Ford's Twin-I-Beam independent front suspension system. It's practical and fun to drive, an ideal vehicle for your everyday driving needs.

A REDESIGNED BIG BRONCO FOR 1987

Ford engineers have made Bronco's standard high-torque 4.9 liter Six even more powerful by adding multiple-port electronic fuel injection controlled by the sophisticated EEC-IV computer. And Bronco features the new electronically controlled rear antilock brake system.

There are many other improvements as well, including a new transfer case design for easy shifting, gas-pressurized shock absorbers for enhanced ride quality, a new driver-oriented instrument panel design, impact-resistant aero-design headlights with easy-to-replace halogen bulbs. Add up everything that's new in Bronco for 1987 and you have what is by far the best big Bronco ever.

Above left: Eddie Bauer Bronco in Dark Canyon Red/Light Chestnut.
Below left: Eddie Bauer Bronco II in Raven Black/Light Chestnut.
Above right: Eddie Bauer Bronco II interior in Chestnut.
Below right: Eddie Bauer Bronco interior in Chestnut.
Some equipment shown on these pages may be optional.

THE FUN-TO-DRIVE COMPACT BRONCO II

Last year, Ford gave Bronco II one of the most powerful standard engines in a compact utility vehicle — the 140-hp* 2.9 liter multiple-port electronically fuel-injected V-6. And now Ford has made the new electronically controlled rear antilock brake system standard on every Bronco II for 1987. This system, explained on page 3, represents an advancement in braking performance in light-duty vehicles.

COMFORT FOR PEOPLE, SPACE FOR CARGO

In the big Bronco, you can seat five passengers — or six with the optional front bench seat — and stow your gear in the spacious 51-cu. ft. rear cargo area. Fold the rear seat forward and you have 81 cu. ft. of space. Or remove it for more than 102 cu. ft.

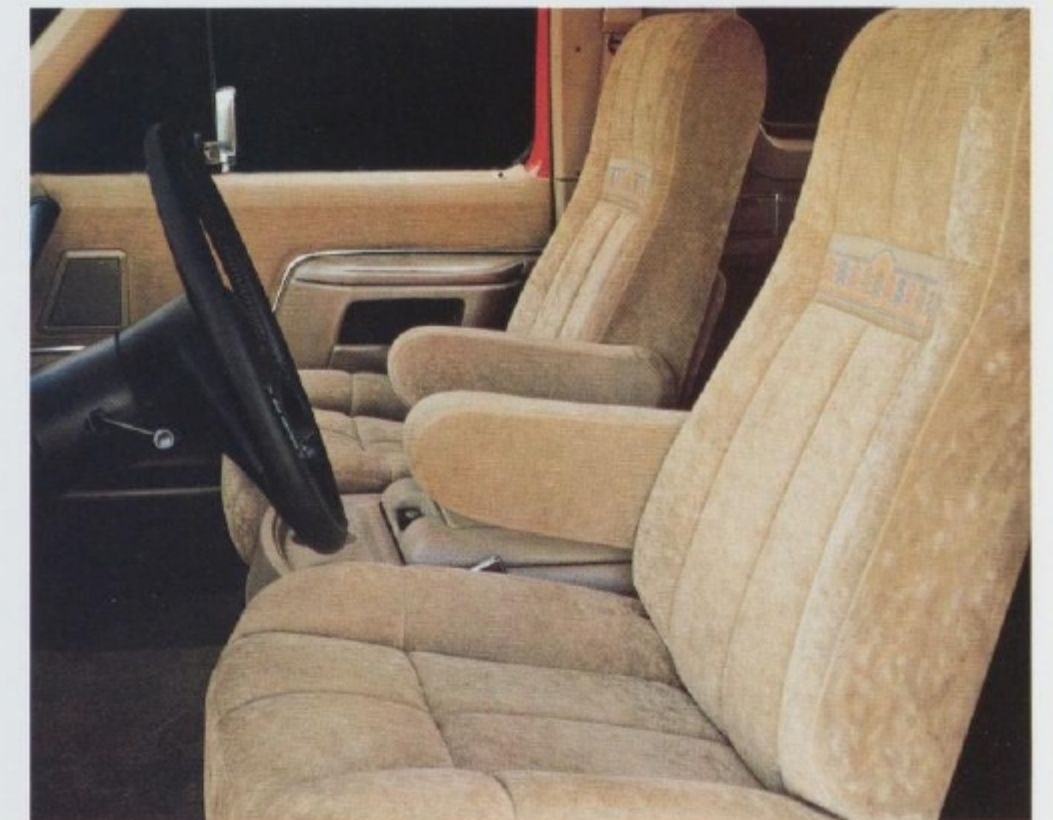
In a Bronco II you can seat four passengers, or five with the optional 60/40 split bench front seats. And the rear seat is the versatile 50/50 design that lets you fold down either one or both seat backs. With both rear seat backs up, you have 25.6 cu. ft. of cargo volume; fold them down and your cargo space increases to 64.9 cu. ft.

TOUCH-DRIVE ELECTRIC SHIFT TRANSFER CASE OPTION

Ford introduced the innovative Touch-Drive 4x4 electric shift option to utility vehicles a year ago in the Bronco II. And now you can enjoy its outstanding convenience in the full-size 1987 Bronco powered by the 5.0L EFI engine with Automatic Overdrive transmission.

With Touch-Drive, you can shift "on the fly" from 2-wheel high to 4-wheel high and back at the touch of a button at any speed. For the ultimate in convenience in 4-wheel driving enjoyment, Touch-Drive is your only way to go.

*Based on SAE Standard J-1349.



1987 FORD AEROSTAR WAGON/VAN

Aerostar is designed to make the most of every inch of interior space, and engineered for power efficiency and ride smoothness. So Aerostar is spacious and comfortable, powerful and economical* — everything you would expect from an advanced-design mini-van built by Ford.

AEROSTAR WAGON— FOR CARRYING PEOPLE

You can do a lot with an Aerostar Wagon. Carry five passengers — or up to seven with one of two optional seating arrangements. Remove the rear seats quickly and easily to make the best use of Aerostar Wagon's 139.2 cu. ft. of cargo space. There's even an available seat/bed to make traveling on vacation relaxing and enjoyable.

Aerostar provides a degree of comfort and roominess you might think possible only in a much larger vehicle. And Aerostar Wagon is designed for exceptional convenience, too, from its low "step-in" height, wide front doors and easy-opening sliding side door to the careful placement of controls and accessories throughout the passenger compartment. Everything about Aerostar is a pleasure, from the moment you enter until the time you leave.

AEROSTAR VAN— FOR CARRYING CARGO

Hard work is no problem for either you or your Aerostar Van. You may be driving on the job all day around the city, stopping and going, getting in and out. This is when you'll really appreciate the comfort that's designed into Aerostar Van — the low "step-in" height, the firm and supportive seating, the ergonomic placement of controls, the easy opening side cargo door and rear liftgate.

You'll also appreciate how ideally suited Aerostar Van is to the kind of job you have to get done. Aerostar offers payloads ranging from the standard 1,200 pounds to an optional payload package of 4,700 pounds with the available 3.0L EFI V-6. The rear cargo port is 56.5 inches wide and 45.1 inches high with no obstructive rear step. Inside, you have 140.3 cu. ft. of cargo volume. And if you

order your Aerostar Cargo or Window Van without the right-hand front passenger seat, you'll have usable cargo space totalling 171.2 cu. ft. The figures all measure up to a mini-van of outstanding utility.

MULTIPLE-PORT FUEL- INJECTED PERFORMANCE

The standard engine in Aerostar Van is the 2.3 liter 4-cyl. engine with multiple-port electronic fuel injection and EEC-IV computer. And there's the 3.0 liter multiple-port EFI V-6, standard in Aerostar Wagon and optional in the Van, one of the most powerful engines in a mini-van. Both engines are teamed with a standard 5-speed manual overdrive transmission. The optional



4-speed Automatic Overdrive is available with the 3.0 liter EFI V-6. With its rear-wheel traction, a properly equipped V-6 Aerostar Wagon is rated to tow up to 4,900 pounds (4,700 pounds with the Van), which makes Aerostar ideal for towing a boat or camper-trailer.**

SMOOTH RIDING COMFORT, GREAT MANEUVERABILITY

Aerostar is engineered with a 4-corner coil spring suspension. But that's only one reason why Aerostar rides so smoothly. Aerostar has a long wheelbase, an important feature for ride quality, and is equipped with gas-pressurized shock absorbers designed to maintain consistent hydraulic fluid pressure even under constant rough road conditions. With its short overall length and 39.8-ft. turning diameter, Aerostar maneuvers beautifully, too. So you can park your Aerostar on the street or in your garage very easily.

*See gas mileage statement on the back cover.
**Reduced by weight of passengers and optional equipment in the towing vehicle.

Above right: Aerostar XLT Wagon in Shadow Grey Metallic/Silver Clearcoat Metallic.
Below right: Aerostar XL Van in Spinnaker Blue/Deep Shadow Blue Metallic.
Left: Aerostar XL Van interior in Regatta Blue.
Below: Aerostar XLT Wagon interior in Medium Grey.
Some equipment shown on these pages may be optional.





1987 FORD CLUB WAGON/ ECONOLINE VAN

Ford's full-size Club Wagon and Econoline Van are hard to beat when it comes to carrying people in comfort or transporting cargo. They offer extraordinary spaciousness and versatility, plus a wide selection of powerful engines to choose from. Remember, too, that only in a Club Wagon and Econoline Van do you enjoy the benefits of Ford's "out front" design, Twin-I-Beam independent front suspension system, and rugged body-on-frame construction.

FORD CLUB WAGON— FOR CARRYING PEOPLE

Club Wagon is available in two sizes on the 138" wheelbase: the Regular Wagon (E-150/E-250) and the Super Wagon (E-350) with its additional 20 inches of inside length. You can seat from five passengers in the standard E-150 model and up to 15 in the E-350 Super Wagon. This year there's a new optional 8-passenger E-250 model that provides family-size seating and, with an optional 7.5L gas or 6.9L diesel engine, delivers added power for towing heavy trailers or boats.

Club Wagon also offers a wide selection of seating arrangements. Front bucket seats, luxurious Captain's Chairs, 3-passenger bench seats with "quick-release" feature, 4-passenger bench seats, and the rear seat/bed (E-150) come in a variety of combinations to suit your exact needs.

FORD ECONOLINE VAN— FOR CARRYING CARGO

Choose the Econoline body style that's right for you. The Cargo Van, designed primarily for utility and RV conversions, and the Window Van which provides windows all around. Econoline is available in Regular Van model on the 124-in. wheelbase with 257 cu. ft. of cargo space and on the 138-in. wheelbase with 302 cu. ft. The 138-in.

wheelbase Super Van provides 347 cu. ft.* A variety of payload ratings are available up to 4,710 pounds in an Econoline E-350 Regular Van.** These are big numbers to keep in mind when you're looking for a spacious full-size van that can handle big hauling jobs.

WIDE SELECTION OF POWERFUL ENGINES

The 4.9 liter Six in Club Wagon and Econoline Van has been the biggest standard engine in its class for many years. And now it's multiple-port electronically fuel-injected for even greater performance†. In Ford's full-size vans you also have a line of powerful V-8's — the 5.0 liter multiple-port EFI, 5.8 liter HO, 7.5 liter, and the true-truck 6.9 liter diesel.

THREE EXCLUSIVE FORD FEATURES

Ford's "out-front" design provides several important advantages. With the forward location of the engine and front wheelhousings, getting from the front passenger area to the rear compartment is easy. So is entering and exiting from the front doors. And 28 key service items are located under the hood for convenient maintenance.

Ford's Twin-I-Beam independent front suspension is another reason why Club Wagon and Econoline Van have been so popular over the years. Each front wheel has its own forged I-beam axle and hefty coil spring to step over bumps independently. And that means a smooth ride.

Body-on-frame construction is a feature in no other full-size van but Club Wagon and Econoline Van from Ford. Among the advantages of this type of construction is the strength needed for towing the big Class IV trailers. Club Wagon and Econoline Van have it, because they're Built Ford Tough!

*Maximum cargo volume with sliding side cargo door and without right-hand passenger seat.
**Maximum allowable weight of people, cargo and equipment.
†See your dealer for 4.9L EFI availability.



Above left: Club Wagon XLT in Dark Shadow Blue Metallic/Light Regatta Blue Metallic.
Below left: Econoline XL Van in Dark Canyon Red.
Above right: Econoline Van XL interior in Canyon Red.
Below right: Club Wagon XLT interior with available Quad Captain's Chairs in Regatta Blue.
Some equipment shown on these pages may be optional.

SAFETY AND OWNER BENEFITS

THE FORD QUALITY COMMITMENT

The Ford Quality Commitment is built on a basic and simple concept: Integrity. Integrity in the way we build our products, integrity in our dealerships' service and integrity in the treatment of our customers.



TOGETHER WE CAN SAVE LIVES

Ford Motor Company strongly encourages all passengers to use their safety belts.

In Ford trucks, outboard front seat lap and shoulder belts have automatic retractors. Outboard rear seat positions also have lap belts with retractors.

Ford urges the use of child and infant restraints, as required by law in all states. Ford's easy-to-install Tot-Guard (for children 20 to 50 pounds) and Infant Carrier (for children up to 20 pounds) are available at all Ford Dealers. If a child restraint requires a top-tether, Ford trucks provide special anchorages.



Participating Ford Dealers are now offering the Lifetime Service Guarantee, which guarantees their work on your Ford vehicle for as long as you own it. This means that the covered repair is paid for once — and never again. If it ever has to be fixed again, the repairing dealer will fix it free. Free parts. Free labor. Even if the vehicle is kept a lifetime. It doesn't matter where it was purchased, or whether it's new or used; the work is still covered by the repairing dealer. This limited warranty covers vehicle in normal use. Items not covered include routine maintenance parts, belts, hoses, sheet metal, and upholstery. Ask to see this guarantee when you visit your participating Ford Dealer.



The optional Ford Extended Service Plan covers major components on new Ford cars and trucks for longer than the vehicle's basic warranty. The cost for this added protection is so moderate that it could pay for itself the first time you need it. Your Ford Dealer has full details.

Ford Motor
Credit
Company

Ford Motor Credit Company is interested in helping to fill the transportation needs of every qualified buyer of a Ford product. A participating dealer can arrange financing terms or a Red Carpet Lease[®] tailored to your circumstance. Ford Credit has offices conveniently located throughout the United States.

Motorcraft

QUALITY REPLACEMENT PARTS
FROM FORD

Genuine Ford and Motorcraft original equipment replacement parts meet the same high standards as those installed in production. They are your best assurance of quality and long-term satisfaction.

SCHEDULED MAINTENANCE

Ford wants to reduce the frequency and cost of scheduled maintenance to an absolute minimum. Some examples of scheduled maintenance intervals are listed in the individual Ford truck line catalogs. Complete maintenance recommendations are provided in the Scheduled Maintenance Booklet for each truck line.

GAS MILEAGE

1987 EPA mileage estimates were not available at the time this catalog was approved for printing. As soon as EPA figures are released (only for light trucks with less than 8,500-lb. GVWR), your Ford Dealer will be among the first to receive this information and will be happy to pass it along to you.

FORD-PAID REPAIR PROGRAMS AFTER THE WARRANTY PERIOD

Sometimes Ford offers adjustment programs to pay all or part of the cost of certain repairs. These programs are intended to assist owners and are in addition to the warranty or to required recalls. Ask Ford or your dealer about such programs relating to your Ford or Lincoln-Mercury vehicle.

To get copies of any adjustment program for your vehicle or the vehicle of interest to you: Call Ford toll-free at 1-800-241-3673. Alaska/Hawaii call 1-800-241-3711 and in Georgia call 1-800-282-0959.

Or write Ford at:
Ford Customer Information System
Post Office Box 95427
Atlanta, Georgia 30347

We'll need your name and address; year, make and model vehicle, as well as engine size; and whether you have a manual or automatic transmission.

TECHNICAL SERVICE BULLETINS

All vehicles need repairs during their lifetime. Sometimes Ford issues technical service bulletins (TSBs) and easy-to-read explanations describing unusual engine or transmission conditions which may lead to costly repairs, the recommended repairs, and new repair procedures. Often a repair now can prevent a more serious repair later. Ask Ford or your dealer for any such TSBs and explanations relating to your Ford or Lincoln-Mercury vehicle.

To get copies of these technical service bulletins and explanations for your vehicle or the vehicle of interest to you: Call Ford toll-free at 1-800-241-3673. Alaska/Hawaii call 1-800-241-3711 and in Georgia call 1-800-282-0959.

Or write Ford at:
Ford Customer Information System
Post Office Box 95427
Atlanta, Georgia 30347

We'll need your name and address; year, make and model vehicle, as well as engine size; and whether you have a manual or automatic transmission.

OPTIONS AVAILABILITY

Options shown or described in this catalog are available at extra cost and may be offered only in combination with other options and subject to additional ordering requirements or limitations.

PRODUCT CHANGES

Ford Division reserves the right to change product specifications at any time without incurring obligations.

"ASK YOUR FORD DEALER"

Following publication of this catalog, certain changes in standard equipment, options, prices and the like, or product delays, may have occurred which would not be included in these pages. Your Ford Dealer is your best source for up-to-date information.

BUY OR LEASE A NEW FORD TRUCK

